

SOUTH LISMORE Flood & Floor Levels

Floor/Flood Level Disclaimer

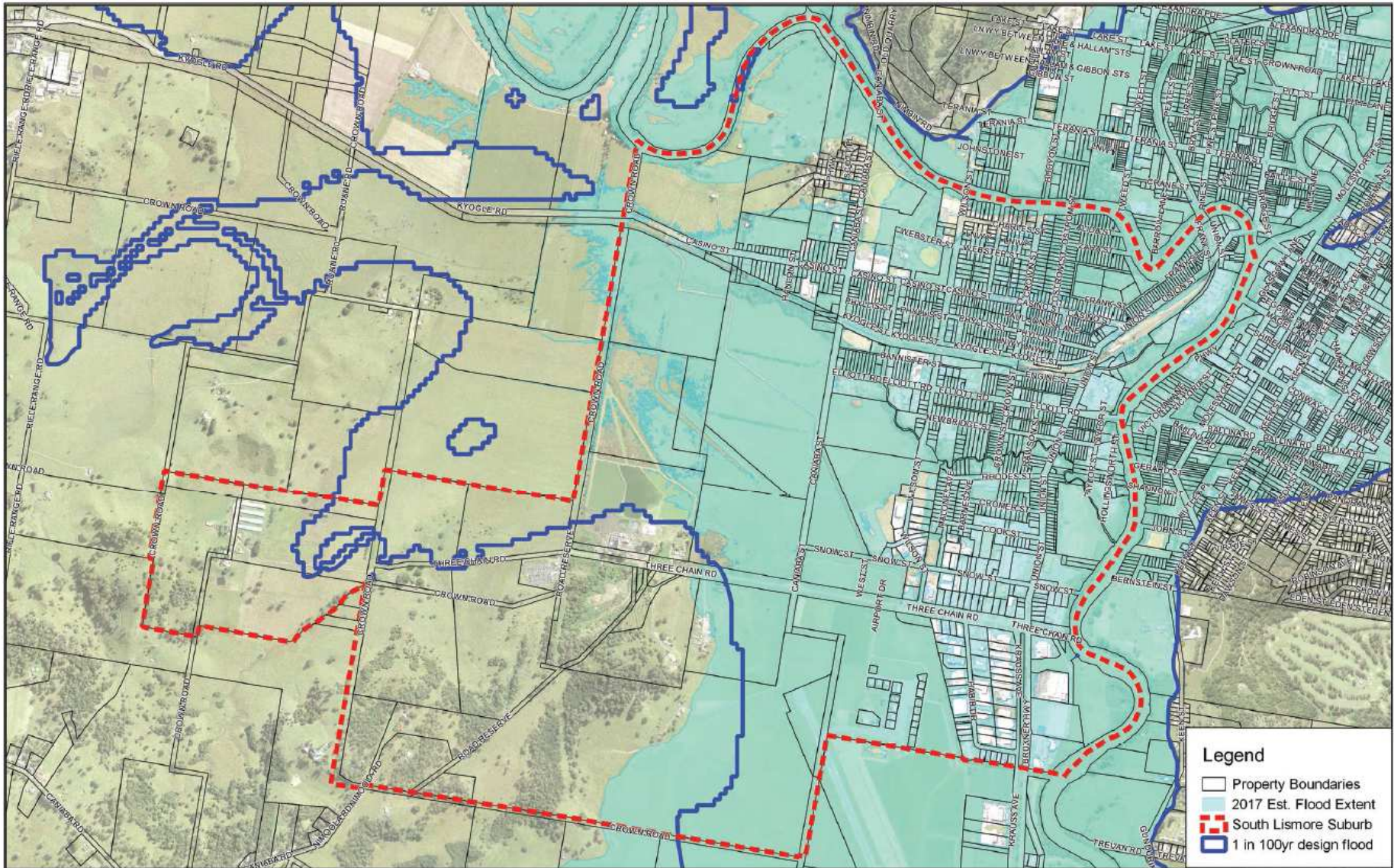
The information contained in this document has been provided to the Council from various sources. Some of the information has been verified by Council survey but in most instances the floor levels have been provided to Council and this document is a collation of the data. Therefore the information contained in this document is not endorsed by the Council as without error, omission or misdescription.

In providing the information in this document, Council does not profess to have any professional expertise or qualifications in matters covered by this information. Nor does Council hold itself out or represent to individuals or to the general public that it is or remains at any time the sole source of information on floods in Lismore and their impact.

The Council accordingly expressly disclaims all and any liability and responsibility in respect of loss, damage or injury to person or property arising from anything done or omitted to be done by any person in reliance, whether wholly or in part, upon any part of this information.

Any person having regard to the information contained in this document is encouraged to seek, at their discretion, all other sources of information on the subject matter as they consider appropriate, which may include local knowledge and/or professional advice.

The South Lismore suburb boundaries are shown on the map overleaf along with the estimated extent of the 2017 flood and the 1 in 100 year ARI design flood extent.



South Lismore Boundary and Estimated Flood Extents

1:14,500



Lismore Flood and Floor Levels – South Lismore

1. Floor levels were initially recorded December 1996 with updates in March 2006 and at various times since. The firsts column in the table below notes the dates where updates have occurred. Where no colour is shown the data was collected in 1996.

2. All levels are in metres AHD (Australian Height Datum).

3. Rowing Club Gauge reading for expected flood events 1 in 10 year ARI is 10.95 metres AHD // 1 in 100 year ARI 12.4 metres AHD.

4. Note during a flood event the estimated flood height is measured at the Rowing Club Gauge. Due to flood gradient the flood height at the property will not be the same as that estimated at the Gauge and could differ by up to 0.6 metres or more (lower or higher), depending on the property's location.

August 2018
July 2014
Mar 2007
Mar 2006
Jul 2005
Jan 2005
July 2004
June 2004
January+ 2004
July 2003
May 2003
March 2003
January 2003
October 2002
August 2002
May 2002

Date	Street Address	Floor Level	Gate Level	Road Centre	Description	1in10yr Level	1in100yr Level
	3 Barnes Avenue South Lismore	12.24	9.76	9.93			12.2
	5 Barnes Avenue South Lismore	12.09	9.83	9.97			12.2
	7 Barnes Avenue South Lismore	12.01	9.87	10.05			12.2
	9 Barnes Avenue South Lismore	11.97	9.91	10.07			12.2
	11 Barnes Avenue South Lismore	10.36	10.00	10.12			12.2
	13 Barnes Avenue South Lismore	12.52	9.85	10.13			12.2
	15 Barnes Avenue South Lismore	12.03	9.93	10.20	Displaying 17		12.2
	16 Barnes Avenue South Lismore	12.49	10.05	10.20			12.2
	17 Barnes Avenue South Lismore	12.77	10.14	10.22	Displaying 19		12.2
	18 Barnes Avenue South Lismore	12.15	9.99	10.21			12.2
	19 Barnes Avenue South Lismore	12.13	9.96	10.23	Displaying 21		12.2
	20 Barnes Avenue South Lismore	12.05	10.00	10.23			12.2
	21 Barnes Avenue South Lismore	12.75	10.05	10.23	Displaying 23		12.2
	22 Barnes Avenue South Lismore	12.05	9.81	10.23			12.2

Date	Street Address	Floor Level	Gate Level	Road Centre	Description	1in10yr Level	1in100yr Level
	23 Barnes Avenue South Lismore	12.04	9.87	10.21			12.2
	24 Barnes Avenue South Lismore	12.05	9.96	10.23			12.2
	25 Barnes Avenue South Lismore	13.18	10.20	10.19			12.1
	27 Barnes Avenue South Lismore	12.08	9.96	10.22	Displaying 31		12.1
	28 Barnes Avenue South Lismore	12.03	9.93	10.20			12.1
	30 Barnes Avenue South Lismore	12.01	9.93	10.23			12.1
	32 Barnes Avenue South Lismore	12.01	10.22	10.18	Greg Clarke Builder		12.1
	2 Bruxner Highway South Lismore	13.18	10.38	10.86	Lismore Grand Prix		12.1
	2 Bruxner Highway South Lismore	12.418	9.9	10.3	Quayside Motors - Showroom	10.4	12
	8 Bruxner Highway South Lismore	12.4	10	10.3	Bunnings	10.2	11.9
	100 Bruxner Highway South Lismore	11.94	10.08	10.66	Lakeside Motel	9.9	11.4
	173 Bruxner Highway South Lismore	11.31	8.7	10.52	Airport Passenger Terminal	9.4	11.3
	13 Caniaba Street South Lismore	15.60	12.08	12.27			12.9
	17 Caniaba Street South Lismore	14.79	12.25	12.30			12.9
	19 Caniaba Street South Lismore	15.19	12.29	12.26			12.9
	21 Caniaba Street South Lismore	14.71	12.15	12.16			12.8
	23 Caniaba Street South Lismore	14.11	11.85	12.07			12.8
	25 Caniaba Street South Lismore	13.86	11.71	11.95			12.8
	29 Caniaba Street South Lismore	13.80	11.71	11.91			12.8
	31 Caniaba Street South Lismore	14.33	11.82	11.90			12.8
	33 Caniaba Street South Lismore	13.81	11.63	11.83			12.8
	35 Caniaba Street South Lismore	14.07	11.79	11.82			12.8
	37 Caniaba Street South Lismore	13.65	11.61	11.82			12.8
	39 Caniaba Street South Lismore	13.66	11.64	11.81			12.8
	41 Caniaba Street South Lismore	13.48	11.52	11.77			12.8
	43 Caniaba Street South Lismore	13.60	11.52	11.77			12.8
	45 Caniaba Street South Lismore	13.40	11.41	11.71			12.8
	47 Caniaba Street South Lismore	13.46	11.45	11.66			12.8
	49 Caniaba Street South Lismore	13.25	11.30	11.58			12.7
	51 Caniaba Street South Lismore	13.27	11.24	11.46			12.7
	53 Caniaba Street South Lismore	13.10	11.13	11.41			12.7
	55 Caniaba Street South Lismore	13.02	11.08	11.34			12.7
	57 Caniaba Street South Lismore	13.52	10.97	11.22			12.7
	59 Caniaba Street South Lismore	13.68	11.01	11.20			12.7
	61 Caniaba Street South Lismore	12.95	10.90	11.13			12.7

Date	Street Address	Floor Level	Gate Level	Road Centre	Description	1in10yr Level	1in100yr Level
	63 Caniaba Street South Lismore	12.76	10.81	11.09			12.7
	72 Caniaba Street South Lismore	12.56	10.69	10.82			12.7
	73 Caniaba Street South Lismore	13.43	10.58	10.83			12.7
	74 Caniaba Street South Lismore	12.78	10.61	10.81			12.7
	75 Caniaba Street South Lismore	12.86	10.54	10.82			12.7
	76 Caniaba Street South Lismore	13.70	10.87	10.81			12.7
	77 Caniaba Street South Lismore	10.92	10.62	10.81			12.7
	78 Caniaba Street South Lismore	12.80	10.61	10.82			12.7
	83 Caniaba Street South Lismore	12.73	10.43	10.77			12.7
	93 Caniaba Street South Lismore	12.38	9.80	10.14			12.6
	39a Caniaba Street South Lismore	13.79	11.47	11.74			12.8
	41a Caniaba Street South Lismore	12.17	11.72	11.74			12.8
	47a Caniaba Street South Lismore	13.39	11.31	11.63			12.8
	55a Caniaba Street South Lismore	14.37	11.46	11.25			12.7
	55b Caniaba Street South Lismore	13.19	11.23	11.25			12.8
	1 Casino Street South Lismore	11.285	11.265	11.604	Southside Pharmacy		12.4
	2 Casino Street South Lismore	11.059	11.059	11.372	Hogans Drive In Liq		12.4
	4 Casino Street South Lismore	11.372	11.372	11.526	Protector Autoglass		12.4
	7 Casino Street South Lismore	11.285	11.265	11.604	Compu-K		12.4
	8 Casino Street South Lismore	11.436	11.436	11.514	Ace Suspension & Fabrication		12.4
	9 Casino Street South Lismore	11.647	11.374	11.604	Lismore Engine Rebuild		12.4
	10 Casino Street South Lismore	11.949	11.303	11.523			12.4
	11 Casino Street South Lismore	11.425	11.323	11.604	Southside Health & Hire Centre		12.4
	13 Casino Street South Lismore	11.51	11.328	11.604	Vac Butcher Shop		12.4
	14 Casino Street South Lismore	13.606	11.36	11.523			12.4
	15 Casino Street South Lismore	11.413	11.388	11.604	Kugal Electrics		12.4
	16 Casino Street South Lismore	13.798	11.373	11.532			12.4
	17 Casino Street South Lismore	11.497	11.497	11.526	Lismore Auto Elect		12.5
	18 Casino Street South Lismore	12.468	11.383	11.532	Lifeline		12.4
	20 Casino Street South Lismore	12.003	11.373	11.52			12.4
	22 Casino Street South Lismore	13.515	11.415	11.668			12.4
	23 Casino Street South Lismore	11.475	11.5	11.75	Wrights Clutch Service		12.5
	24 Casino Street South Lismore	13.467	11.416	11.668			12.5
	25 Casino Street South Lismore	11.625	11.448	11.514	Sheaffe Motors		12.5
	26 Casino Street South Lismore	13.327	11.366	11.668			12.5

Date	Street Address	Floor Level	Gate Level	Road Centre	Description	1in10yr Level	1in100yr Level
	28 Casino Street South Lismore	14.84	11.366	11.668			12.5
	32 Casino Street South Lismore	12.801	11.492	11.677			12.5
	34 Casino Street South Lismore	12.541	11.44	11.687	Natural Energy Centre		12.5
	35 Casino Street South Lismore	11.652	11.308	11.514	D & L Mowers		12.5
	36 Casino Street South Lismore	12.697	11.452	11.687			12.5
	38 Casino Street South Lismore	13.69	11.415	11.68			12.5
	39 Casino Street South Lismore	11.733	11.419	11.523			12.5
	40 Casino Street South Lismore	14.458	11.421	11.62			12.5
	41 Casino Street South Lismore	11.697	11.413	11.737	Northern Rivers Solar		12.5
	42 Casino Street South Lismore	13.919	11.444	11.629			12.5
	43 Casino Street South Lismore	14.346	11.097	11.737			12.5
	44 Casino Street South Lismore	13.788	11.444	11.627			12.5
	46 Casino Street South Lismore	11.93	11.394	11.637			12.5
	48 Casino Street South Lismore	11.953	11.36	11.655			12.5
	50 Casino Street South Lismore	13.382	11.347	11.657			12.5
	52 Casino Street South Lismore	13.826	11.35	11.657			12.5
	55 Casino Street South Lismore	11.473	11.33	11.737	Minarelli Smash Repairs		12.5
	56 Casino Street South Lismore	12.01	11.31	11.79			12.5
	57 Casino Street South Lismore	11.998	11.313	11.797			12.5
	58 Casino Street South Lismore	13.76	11.32	11.77			12.5
	59 Casino Street South Lismore	14.491	11.351	11.717			12.5
	60 Casino Street South Lismore	13.973	11.33	11.78			12.5
	62 Casino Street South Lismore	13.58	11.302	11.781			12.5
	63 Casino Street South Lismore	13.783	11.217	11.67			12.5
	63 Casino Street South Lismore	13.96	11.63	11.38	63 Ostrom Street		12.5
	63 Casino Street South Lismore	13.96	11.63	11.38	63 Ostrom Street		12.5
	63 Casino Street South Lismore	13.96	11.63	11.38	63 Ostrom Street		12.5
	64 Casino Street South Lismore	13.04	11.21	11.78			12.5
	65 Casino Street South Lismore	13.64	11.303	11.665			12.5
	66 Casino Street South Lismore	13.17	11.2	11.73			12.5
	67 Casino Street South Lismore	12.604	11.308	11.662			12.5
	68 Casino Street South Lismore	13.77	11.2	11.69			12.5
	70 Casino Street South Lismore	11.83	11.23	11.66			12.5
	71 Casino Street South Lismore	13.417	11.318	11.66			12.5
	72 Casino Street South Lismore	13.213	11.166	11.64			12.5

Date	Street Address	Floor Level	Gate Level	Road Centre	Description	1in10yr Level	1in100yr Level
	73 Casino Street South Lismore	14.06	11.294	11.66			12.5
	74 Casino Street South Lismore	11.124	11.124	11.63			12.5
	76 Casino Street South Lismore	13.22	11.07	11.56			12.5
	77 Casino Street South Lismore	13.136	11.26	11.754			12.5
	78 Casino Street South Lismore	13.31	11.06	11.52			12.5
	79 Casino Street South Lismore	13.464	11.374	11.821			12.5
	80 Casino Street South Lismore	13.28	11.03	11.5			12.5
	81 Casino Street South Lismore	13.344	11.253	11.814			12.5
	82 Casino Street South Lismore	11.32	11.02	11.48			12.5
	83 Casino Street South Lismore	13.634	11.352	11.774			12.5
	84 Casino Street South Lismore	11.25	10.98	11.49			12.5
	85 Casino Street South Lismore	13.34	11.23	11.73			12.5
	86 Casino Street South Lismore	13.53	10.91	11.47			12.5
	87 Casino Street South Lismore	12.63	11.333	11.63			12.5
	88 Casino Street South Lismore	12.95	10.896	11.43			12.5
	89 Casino Street South Lismore	11.98	11.25	11.61			12.5
	90 Casino Street South Lismore	13.04	10.86	11.4			12.5
	91 Casino Street South Lismore	13.32	11.16	11.51			12.5
	92 Casino Street South Lismore	13.05	10.87	11.33			12.5
	93 Casino Street South Lismore	13.37	11.13	11.5			12.5
	94 Casino Street South Lismore	12.92	10.84	11.3			12.5
	95 Casino Street South Lismore	13.54	11.14	11.45			12.5
	96 Casino Street South Lismore	10.95	10.82	11.19			12.5
	97 Casino Street South Lismore	11.77	11.04	11.4			12.5
	99 Casino Street South Lismore	13.47	11.07	11.3			12.5
	100 Casino Street South Lismore	12.89	10.69	11.12			12.5
	101 Casino Street South Lismore	13.2	10.94	11.35			12.5
	102 Casino Street South Lismore	13.33	10.74	11.16			12.5
	104 Casino Street South Lismore	13.15	10.87	11.18	Units 1 & 2		12.6
	105 Casino Street South Lismore	11.16	10.91	10.9	Farm Moto		12.5
	108 Casino Street South Lismore	11.79	10.93	11.19			12.6
	110 Casino Street South Lismore	12.66	10.84	11.20			12.6
	112 Casino Street South Lismore	13.05	10.96	11.22			12.6
	114 Casino Street South Lismore	13.45	10.91	11.22			12.6
	116 Casino Street South Lismore	13.21	10.99	11.23			12.6

Date	Street Address	Floor Level	Gate Level	Road Centre	Description	1in10yr Level	1in100yr Level
	118 Casino Street South Lismore	13.22	10.96	11.22			12.6
	120 Casino Street South Lismore	13.14	11.01	11.24			12.6
	124 Casino Street South Lismore	13.21	10.90	11.19			12.6
	126 Casino Street South Lismore	13.34	10.82	11.16			12.6
	130 Casino Street South Lismore	13.10	10.81	11.08			12.6
	134 Casino Street South Lismore	12.20	10.89	11.06			12.7
	140 Casino Street South Lismore	13.04	10.67	11.02			12.7
	142 Casino Street South Lismore	12.85	10.80	10.98			12.7
	144 Casino Street South Lismore	12.87	10.81	10.96			12.7
	145 Casino Street South Lismore	12.34	11.37	11.11	Rural Buying Service		12.7
	146 Casino Street South Lismore	12.98	10.70	10.96			12.7
	150 Casino Street South Lismore	12.47	10.55	10.96			12.7
	154 Casino Street South Lismore	12.68	10.64	10.92			12.7
	155 Casino Street South Lismore	12.43	11.96	11.21	Tender Centre		12.7
	156 Casino Street South Lismore	13.87	10.52	10.92			12.7
	158 Casino Street South Lismore	12.40	10.61	10.89			12.7
	162 Casino Street South Lismore	13.23	10.61	10.90			12.7
	166 Casino Street South Lismore	12.84	10.64	10.90			12.7
	167 Casino Street South Lismore	12.91	10.83	10.96			12.7
	169 Casino Street South Lismore	12.86	10.77	10.92			12.7
	170 Casino Street South Lismore	10.80	10.79	10.93			12.7
	171 Casino Street South Lismore	12.83	10.76	10.93			12.7
	172 Casino Street South Lismore	12.48	11.74	10.95			12.7
	173 Casino Street South Lismore	12.91	10.71	10.90			12.7
	174 Casino Street South Lismore	13.46	10.88	10.95	Units 1 to 4		12.7
	176 Casino Street South Lismore	10.84	10.88	10.96			12.7
	177 Casino Street South Lismore	12.84	10.72	10.89			12.7
	178 Casino Street South Lismore	11.60	10.56	10.95			12.8
	179 Casino Street South Lismore	13.00	10.82	10.90			12.7
	181 Casino Street South Lismore	13.12	10.94	10.93			12.7
	182 Casino Street South Lismore	12.87	10.62	10.96			12.8
	183 Casino Street South Lismore	12.95	10.76	10.94			12.7
	184 Casino Street South Lismore	11.29	10.72	10.97			12.8
	186 Casino Street South Lismore	12.76	10.65	11.00			12.8
	187 Casino Street South Lismore	12.57	11.06	10.94			12.8

Date	Street Address	Floor Level	Gate Level	Road Centre	Description	1in10yr Level	1in100yr Level
	188 Casino Street South Lismore	12.85	10.78	11.03			12.8
	189 Casino Street South Lismore	11.64	11.16	10.94	Kennedy Bros		12.8
	192 Casino Street South Lismore	11.29	10.85	10.98	North Coast Tree Lopping		12.8
	193 Casino Street South Lismore	11.64	11.16	10.94	Kennedy Bros		12.8
	194 Casino Street South Lismore	11.29	10.85	10.98	North Coast Tree Lopping		12.8
	195 Casino Street South Lismore	12.76	10.75	10.96			12.8
	196 Casino Street South Lismore	12.81	10.74	11.00			12.9
	197 Casino Street South Lismore	12.93	10.64	10.95			12.8
	199 Casino Street South Lismore	12.87	10.83	10.95			12.8
	200 Casino Street South Lismore	13.57	10.97	11.00			12.9
	201 Casino Street South Lismore	12.86	10.81	10.97			12.8
	202 Casino Street South Lismore	13.34	10.85	11.05	6 UNITS		12.9
	203 Casino Street South Lismore	12.78	10.75	10.99			12.8
	205 Casino Street South Lismore	12.77	10.82	11.00			12.8
	206 Casino Street South Lismore	13.62	10.88	11.09			12.9
	207 Casino Street South Lismore	12.88	10.76	11.04			12.8
	208 Casino Street South Lismore	13.32	10.83	11.12			13
	209 Casino Street South Lismore	12.92	10.63	10.99			12.9
	211 Casino Street South Lismore	12.92	10.82	10.99			12.9
	213 Casino Street South Lismore	12.86	10.79	10.99			12.9
	214 Casino Street South Lismore	13.19	10.99	11.16			13
	215 Casino Street South Lismore	12.94	10.79	11.03			12.9
	217 Casino Street South Lismore	13.06	10.90	11.03			12.9
	219 Casino Street South Lismore	12.96	10.82	11.06			12.9
	221 Casino Street South Lismore	14.66	11.04	11.08	Lot 22		13
	223 Casino Street South Lismore	13.62	11.06	11.11			13
	225 Casino Street South Lismore	13.38	10.93	11.13			13
	126a Casino Street South Lismore	12.21	10.78	11.12			12.6
	134a Casino Street South Lismore	12.18	11.14	11.06			12.6
	77a Casino Street South Lismore	13.61	11.255	11.799			12.5
	7 Centre Street South Lismore	12.38	11.912	11.8			12.6
	10 Centre Street South Lismore	13.1	11.79	11.783			12.6
	11 Centre Street South Lismore	12.56	11.65	11.69			12.6
	12 Centre Street South Lismore	13.59	11.49	11.7			12.6
	14 Centre Street South Lismore	14.02	11.47	11.7			12.6

Date	Street Address	Floor Level	Gate Level	Road Centre	Description	1in10yr Level	1in100yr Level
	15 Centre Street South Lismore	13.99	11.61	11.67			12.6
	17 Centre Street South Lismore	13.59	11.52	11.64			12.6
	18 Centre Street South Lismore	13.99	11.88	11.74			12.6
	19 Centre Street South Lismore	13.5	11.4	11.49			12.6
	21 Centre Street South Lismore	13.59	11.24	11.28			12.6
	22 Centre Street South Lismore	13.537	11.22	11.29			12.6
	23 Centre Street South Lismore	12.15	11.07	11.275			12.6
	25 Centre Street South Lismore	13.377	10.98	11.24			12.6
	29 Centre Street South Lismore	13.22	11.05	11.25			12.6
	31 Centre Street South Lismore	11.31	11.12	11.27			12.6
	32 Centre Street South Lismore	13.27	11.23	11.28			12.5
	36 Centre Street South Lismore	13.31	11.07	11.277			12.5
	37 Centre Street South Lismore	13.05	11.1	11.26			12.6
	38 Centre Street South Lismore	13.89	11.49	11.2	7 UNITS		12.5
	39 Centre Street South Lismore	13.11	10.91	11.24			12.5
	40 Centre Street South Lismore	13.35	11.04	11.15			12.5
	41 Centre Street South Lismore	13.03	11.02	11.21			12.5
	4 Charles Street South Lismore	12.25	11.24	11.34	9 Crown Street		12.6
	6 Charles Street South Lismore	13.55	11.44	11.44			12.6
	7 Charles Street South Lismore	14.28	11.57	11.48			12.6
	8 Charles Street South Lismore	13.69	11.49	11.53			12.6
	11 Charles Street South Lismore	14.32	11.67	11.64			12.6
	12 Charles Street South Lismore	13.65	11.59	11.61			12.6
	13 Charles Street South Lismore	12.45	11.73	11.74			12.6
	14 Charles Street South Lismore	13.75	11.63	11.7			12.6
	17 Charles Street South Lismore	12.46	11.86	11.79			12.6
	18 Charles Street South Lismore	13.73	11.69	11.79			12.6
	20 Charles Street South Lismore	12.78	11.82	11.9			12.6
	27 Charles Street South Lismore	15.04	11.94	11.82			12.6
	28 Charles Street South Lismore	13.82	11.77	11.82			12.6
	30 Charles Street South Lismore	12.84	11.8	11.89			12.6
	33 Charles Street South Lismore	13.92	11.92	11.92			12.6
	34 Charles Street South Lismore	14.01	11.82	11.91			12.6
	35 Charles Street South Lismore	14.68	11.86	11.2			12.6
	37 Charles Street South Lismore	14.03	11.88	11.2			12.6

Date	Street Address	Floor Level	Gate Level	Road Centre	Description	1in10yr Level	1in100yr Level
	39 Charles Street South Lismore	14.11	12.01	11.2			12.6
	2 Charlton Avenue South Lismore	14.53	11.88	11.87			12.8
	4 Charlton Avenue South Lismore	12.04	11.70	11.80			12.8
	6 Charlton Avenue South Lismore	12.16	11.92	11.89			12.9
	7 Charlton Avenue South Lismore	14.10	12.10	11.98			12.9
	8 Charlton Avenue South Lismore	12.23	12.01	11.90			12.9
	10 Charlton Avenue South Lismore	12.18	11.98	11.98			12.9
	12 Charlton Avenue South Lismore	15.03	12.25	12.08			12.9
	14 Charlton Avenue South Lismore	12.38	12.27	12.24			12.9
	16 Charlton Avenue South Lismore	12.61	12.32	12.42			13
	18 Charlton Avenue South Lismore	14.79	12.28	12.41			13
	20 Charlton Avenue South Lismore	14.68	11.79	12.41			13.1
	1 Cook Street South Lismore	12.55	10.32	10.52	North Coast Financial Services		12.2
	1 Cook Street South Lismore	10.5	10.31	10.51	Readings		12.2
	1 Cook Street South Lismore	10.3	10.21	10.49	Readings Factory		12.2
	1 Cook Street South Lismore	11.54	10.49	10.46	Readings Office		12.2
	4 Cook Street South Lismore	10.94	10.47	10.53	Readings Factory		12.2
	8 Cook Street South Lismore	10.81	10.51	10.39	Readings		12.2
	16 Cook Street South Lismore	11.36	10.44	10.32	Readings		12.2
	17 Cook Street South Lismore	12.32	10.16	10.36			12.2
	19 Cook Street South Lismore	10.41	10.28	10.3	Ex- BBC Timber		12.2
	19 Cook Street South Lismore	11.71	10.18	10.26	Ex- BBC Hardware		12.2
	24 Cook Street South Lismore	12.45	10.03	10.42			12.2
	38 Cook Street South Lismore	13.38	40.44	10.48			
	40 Cook Street South Lismore	13.40	10.53	10.41			12.1
	44 Cook Street South Lismore	13.38	10.44	10.48			12.1
	5 Cromer Street South Lismore	12.64	9.28	9.54	Units 1 to 6		12.2
	7 Cromer Street South Lismore	12.91	9.63	9.79			12.2
	8 Cromer Street South Lismore	11.79	9.58	9.66			12.2
	9 Cromer Street South Lismore	12.47	9.85	10.04			12.2
	10 Cromer Street South Lismore	12.11	9.89	9.93			12.2
	11 Cromer Street South Lismore	12.29	9.94	10.14			12.2
	12 Cromer Street South Lismore	12.13	10.02	10.03			12.2
	13 Cromer Street South Lismore	12.30	10.08	10.23			12.2
	14 Cromer Street South Lismore	12.24	10.09	10.12			12.2

Date	Street Address	Floor Level	Gate Level	Road Centre	Description	1in10yr Level	1in100yr Level
	15 Cromer Street South Lismore	12.36	10.16	10.24			12.2
	16 Cromer Street South Lismore	12.41	10.17	10.23			12.2
	17 Cromer Street South Lismore	12.18	10.09	10.23			12.2
	18 Cromer Street South Lismore	12.32	10.14	10.24			12.2
	19 Cromer Street South Lismore	12.09	10.07	10.23			12.2
	20 Cromer Street South Lismore	12.51	10.03	10.23			12.2
	24 Cromer Street South Lismore	12.63	10.08	10.24			12.2
	26 Cromer Street South Lismore	12.43	10.10	10.23			12.2
	30 Cromer Street South Lismore	12.22	9.95	10.26			12.2
	32 Cromer Street South Lismore	12.11	10.00	10.19			12.2
	34 Cromer Street South Lismore	12.15	9.94	10.18			12.2
	4 Crown Lane South Lismore	13.79	11.19	11.13			12.5
	6 Crown Lane South Lismore	13.42	11.22	11.2			12.5
	8 Crown Lane South Lismore	13.29	11.244	11.29			12.5
	9 Crown Lane South Lismore	13.86	11.27	11.24			12.5
	10 Crown Lane South Lismore	13.47	11.27	11.26			12.6
	12 Crown Lane South Lismore	13.47	11.38	11.24			12.5
	1 Crown Street South Lismore	12.17	11.75	11.72			12.6
	2 Crown Street South Lismore	14.38	11.78	11.94		11.4	12.5
	4 Crown Street South Lismore	12.27	11.63	11.76		11.4	12.5
	6 Crown Street South Lismore	11.85	11.51	11.52		11.4	12.5
	7 Crown Street South Lismore	14.02	11.53	11.59			12.6
	8 Crown Street South Lismore	14.17	11.55	11.57			12.5
	10 Crown Street South Lismore	13.69	11.35	11.46			12.5
	11 Crown Street South Lismore	13.52	11.27	11.25			12.6
	12 Crown Street South Lismore	13.83	11.31	11.36			12.5
	13 Crown Street South Lismore	13.51	11.22	11.21			12.6
	14 Crown Street South Lismore	13.96	11.06	11.21			12.5
	16 Crown Street South Lismore	13.12	11.03	11.14			12.5
	17 Crown Street South Lismore	13.32	10.99	11.12			12.6
	18 Crown Street South Lismore	13.12	10.8	11.06			12.5
	20 Crown Street South Lismore	12.62	10.52	11.07			12.5
	21 Crown Street South Lismore	13.03	10.73	10.68			12.5
	22 Crown Street South Lismore	12.57	10.03	10.66			12.5
	23 Crown Street South Lismore	12.87	10.35	10.56			12.5

Date	Street Address	Floor Level	Gate Level	Road Centre	Description	1in10yr Level	1in100yr Level
	25 Crown Street South Lismore	13.47	10.94	10.86			12.5
	28 Crown Street South Lismore	13.27	10.85	10.99			12.5
	29 Crown Street South Lismore	13.6	11.07	11.17			12.5
	30 Crown Street South Lismore	12.47	11.05	11.1			12.5
	32 Crown Street South Lismore	11.798	11.2	11.18			12.5
	33 Crown Street South Lismore	13.4	11	11.19			12.5
	34 Crown Street South Lismore	11.69	11.14	11.22			12.5
	36 Crown Street South Lismore	11.29	11.296	11.26			12.5
	37 Crown Street South Lismore	13.46	11.05	11.21			12.5
	38 Crown Street South Lismore	13.97	11.37	11.31			12.5
	41 Crown Street South Lismore	13.33	11.04	11.26			12.5
	44 Crown Street South Lismore	13.33	11.21	11.34			12.5
	55 Crown Street South Lismore	13.61	11.34	11.4			12.5
	57 Crown Street South Lismore	13.87	11.23	11.36			12.5
	61 Crown Street South Lismore	13.39	11.24	11.32			12.5
	65 Crown Street South Lismore	13.26	11.04	11.2			12.4
	67 Crown Street South Lismore	13.07	11.01	11.1			12.4
	69 Crown Street South Lismore	12.26	10.92	11.06			12.4
	71 Crown Street South Lismore	12.99	10.91	11.05			12.4
	73 Crown Street South Lismore	13.03	10.8	10.9			12.4
	75 Crown Street South Lismore	13.43	10.73	10.82			12.4
	76 Crown Street South Lismore	12.13	10.16	10.24			12.3
	77 Crown Street South Lismore	12.60	10.00	10.24	Boral Gas		12.4
	85 Crown Street South Lismore	11.81	9.67	10.31			12.3
	87 Crown Street South Lismore	11.93	9.45	9.80			12.3
	89 Crown Street South Lismore	12.38	9.91	9.80			12.3
	91 Crown Street South Lismore	11.81	9.28	9.65			12.3
	93 Crown Street South Lismore	11.09	9.67	9.45			12.3
	95 Crown Street South Lismore	10.71	9.96	9.99			12.3
	97 Crown Street South Lismore	10.74	9.68	9.84			12.3
	98 Crown Street South Lismore	10.75	9.91	9.97	Vacant Factory		12.3
	99 Crown Street South Lismore	10.69	9.47	9.67			12.3
	100 Crown Street South Lismore	11.33	9.14	9.21	31 Newbridge Street		12.3
	105 Crown Street South Lismore	10.33	8.59	8.83			12.3
	107 Crown Street South Lismore	11.60	8.60	10.33			12.3

Date	Street Address	Floor Level	Gate Level	Road Centre	Description	1in10yr Level	1in100yr Level
	109 Crown Street South Lismore	12.03	9.77	9.84			12.3
	111 Crown Street South Lismore	12.17	9.86	9.96			12.3
	115 Crown Street South Lismore	12.76	9.65	9.74			12.3
	117 Crown Street South Lismore	11.78	9.57	9.70			12.3
	121 Crown Street South Lismore	12.37	9.46	9.55			12.3
	22 Edwards Street South Lismore	13.99	10.99	10.70			12.5
	25 Edwards Street South Lismore	12.41	9.93	9.90			12.5
	4 Elliott Road South Lismore	13.33	10.84	10.65			12.3
	6 Elliott Road South Lismore	13.13	10.9	10.76			12.3
	8 Elliott Road South Lismore	10.94	10.91	10.79			12.3
	10 Elliott Road South Lismore	13.29	10.77	10.74			12.3
	12 Elliott Road South Lismore	13.28	10.74	10.69			12.3
	14 Elliott Road South Lismore	12.53	10.64	10.74			12.3
	16 Elliott Road South Lismore	12.83	10.7	10.63			12.3
	19 Elliott Road South Lismore	10.62	10.34	10.21	Mobil (next to Kennedys depot)		12.3
	28 Elliott Road South Lismore	12.24	10.15	10.21			12.3
	30 Elliott Road South Lismore	12.23	10.04	10.08			12.3
	32 Elliott Road South Lismore	10.36	9.69	9.71			12.3
	33 Elliott Road South Lismore	11.20	8.25	8.82			12.3
	34 Elliott Road South Lismore	12.15	9.56	9.59			12.3
	36 Elliott Road South Lismore	11.39	8.95	9.05			12.3
	37 Elliott Road South Lismore	11.81	8.43	8.87			12.3
	39 Elliott Road South Lismore	12.80	9.02	9.09			12.3
	43 Elliott Road South Lismore	10.43	9.42	8.95			12.3
	45 Elliott Road South Lismore	11.44	9.01	8.81			12.3
	50a Elliott Road South Lismore	9.76	8.65	9.09	Units 1 to 8		12.3
	50b Elliott Road South Lismore	9.76	8.65	9.09	Units 1 to 8		12.3
	50c Elliott Road South Lismore	9.76	8.65	9.09	Units 1 to 8		12.3
	50d Elliott Road South Lismore	9.76	8.65	9.09	Units 1 to 8		12.3
	50e Elliott Road South Lismore	9.76	8.65	9.09	Units 1 to 8		12.3
	51 Elliott Road South Lismore	12.40	10.28	10.38			12.3
	56 Elliott Road South Lismore	11.78	9.30	8.84			12.3
	64 Elliott Road South Lismore	12.04	9.76	9.84			12.3
	66 Elliott Road South Lismore	12.12	9.92	9.91			12.3
	75 [67] Elliott Road South Lismore	10.35	9.70	9.98			12.4

Date	Street Address	Floor Level	Gate Level	Road Centre	Description	1in10yr Level	1in100yr Level
	67 Elliott Road South Lismore	11.23	9.42	9.97			12.4
	68 Elliott Road South Lismore	12.16	9.73	9.97			12.3
	70 Elliott Road South Lismore	12.21	9.90	9.99			12.3
	72 Elliott Road South Lismore	12.23	9.86	9.99			12.3
	74 Elliott Road South Lismore	12.14	9.86	9.98			12.3
	76 Elliott Road South Lismore	11.98	9.77	10.01			12.3
	77 Elliott Road South Lismore	12.17	9.71	10.15			12.4
	79 Elliott Road South Lismore	10.32	10.11	10.18			12.4
	81 Elliott Road South Lismore	13.01	9.94	10.30			12.4
	83 Elliott Road South Lismore	12.49	10.10	10.32			12.4
	84 Elliott Road South Lismore	12.01	9.70	10.08			12.3
	85 Elliott Road South Lismore	12.70	10.30	10.37			12.4
	86 Elliott Road South Lismore	12.35	9.96	10.18			12.3
	87 Elliott Road South Lismore	12.47	10.02	10.42			12.4
	88 Elliott Road South Lismore	12.38	10.08	10.30			12.3
	94 Elliott Road South Lismore	12.13	9.98	10.33			12.3
	96 Elliott Road South Lismore	12.20	10.03	10.39			12.3
	100 Elliott Road South Lismore	12.51	10.03	10.43			12.3
	102 Elliott Road South Lismore	12.17	10.06	10.42			12.4
	104 Elliott Road South Lismore	10.88	10.26	10.49	Humes		12.4
	107 Elliott Road South Lismore	12.64	10.12	10.40			12.4
	111 Elliott Road South Lismore	12.84	10.14	10.28			12.4
	117 Elliott Road South Lismore	12.06	9.89	10.04			12.4
	129 Elliott Road South Lismore	11.06	10.35	10.42			12.4
	6 Engine Street South Lismore	12.54	10.75	10.69			12.3
	8 Engine Street South Lismore	12.92	10.75	10.7			12.3
	10 Engine Street South Lismore	12.83	10.77	10.68			12.3
	12 Engine Street South Lismore	12.71	10.77	10.68			12.3
	14 Engine Street South Lismore	13.08	10.69	10.66			12.3
	16 Engine Street South Lismore	11.49	10.63	10.66			12.3
	18 Engine Street South Lismore	11.39	10.6	10.62			12.3
	20 Engine Street South Lismore	11.39	10.6	10.62			12.3
	22 Engine Street South Lismore	11.18	10.48	10.62			12.3
	24 Engine Street South Lismore	12.85	10.56	10.6			12.3
	26 Engine Street South Lismore	11.42	10.53	10.52			12.3

Date	Street Address	Floor Level	Gate Level	Road Centre	Description	1in10yr Level	1in100yr Level
	28 Engine Street South Lismore	12.55	10.51	10.54			12.3
	30 Engine Street South Lismore	10.9	10.43	10.52			12.3
	32 Engine Street South Lismore	11.02	10.4	10.49			12.3
	34 Engine Street South Lismore	10.76	10.37	10.44			12.3
	38 Engine Street South Lismore	12.40	10.28	10.38			12.3
	18a Engine Street South Lismore	11.39	10.6	10.62			12.3
	18b Engine Street South Lismore	11.39	10.6	10.62			12.3
	5 Foleys Road South Lismore	11.61	10.71	10.78			12.3
	6 Foleys Road South Lismore	12.95	10.56	10.57			12.2
	7 Foleys Road South Lismore	13.49	10.65	10.62			12.3
	8 Foleys Road South Lismore	12.53	10.55	10.55			12.2
	11 [9] Foleys Road South Lismore	10.76	10.49	10.55			12.3
	10 Foleys Road South Lismore	12.5	10.43	10.52			12.3
	12 Foleys Road South Lismore	10.79	10.24	10.46			12.3
	13 Foleys Road South Lismore	12.64	10.47	10.52			12.3
	15 Foleys Road South Lismore	12.46	10.46	10.48			12.3
	17 Foleys Road South Lismore	12.36	10.33	10.3			12.3
	18 Foleys Road South Lismore	12.3	9.86	9.94			12.3
	19 Foleys Road South Lismore	10.64	10.22	10.14			12.3
	20 Foleys Road South Lismore	11.46	9.11	9.33			12.3
	16 Foleys Road. South Lismore	12.03	10.02	10.14			12.3
	1 Frank Street South Lismore	12.189	9.716	9.75		11.2	12.5
	3 Frank Street South Lismore	12.66	9.693	9.97		11.2	12.5
	5 Frank Street South Lismore	13.73	9.88	10.18		11.2	12.5
	7 Frank Street South Lismore	14.3	10.48	10.38		11.2	12.5
	9 Frank Street South Lismore	13.65	11.15	10.98		11.2	12.5
	12 Frank Street South Lismore	13.15	10.489	10.88		11.2	12.5
	13 Frank Street South Lismore	12.27	11.075	11.08		11.2	12.5
	15 Frank Street South Lismore	11.67	11.007	11.15		11.2	12.5
	17 Frank Street South Lismore	11.78	11.028	11.208		11.2	12.5
	19 Frank Street South Lismore	11.322	10.966	11.083		11.2	12.5
	2 Habib Drive South Lismore	11.12	10.74	10.06	Front 3 Ch Rd - Comp. Sols/Milka-ware		12
	2 Habib Drive South Lismore	11.14	10.84	10.68	Mikes Real Food/Lynns Lunch/Paint & Trade		12
	5 Habib Drive South Lismore	11.57	10.92	10.43	Matthews Steel Fabrication		11.9
	8 Habib Drive South Lismore	12.35	10.68	10.26	Norco		12

Date	Street Address	Floor Level	Gate Level	Road Centre	Description	1in10yr Level	1in100yr Level
	9 Habib Drive South Lismore	11.67	10.56	10.25	Laminex		11.9
	13 Habib Drive South Lismore	11.52	10.68	10.18	TNT		11.9
	16 Habib Drive South Lismore	11.74	10.50	10.20	Harvey Norman & Oasis		11.9
	17 Habib Drive South Lismore	11.77	10.49	10.03	ARC		11.8
	21 Habib Drive South Lismore	11.89	10.49	10.07	Sidney & Hacking		11.8
	22 Habib Drive South Lismore	12.02	10.59	10.03	Splash Factory + 2 Units		11.8
	23 Habib Drive South Lismore	11.72	10.34	10.16	Roofing Centre		11.8
	24 Habib Drive South Lismore	11.89	10.81	10.23	Units 1-5		11.8
	25 Habib Drive South Lismore	11.74	10.36	10.20	G James Glass		11.8
	26 Habib Drive South Lismore	11.81	10.44	10.15	Ipec		11.8
	30 Habib Drive South Lismore	11.83	10.33	11.78	Units 1-7		11.8
	30 Habib Drive South Lismore	11.84	10.33	11.78	Units 8-14		11.8
	31 Habib Drive South Lismore	11.66	10.01	9.78	Tip Top Bakery		11.7
	33 Habib Drive South Lismore	11.69	10.01	9.88	Units 1-4		11.7
	34 Habib Drive South Lismore	11.83	10.25	9.79	KJ Autos		11.8
	35 Habib Drive South Lismore	11.73	10.42	9.95	Attard		11.7
	37 Habib Drive South Lismore	11.67	10.22	10.00	Caroy Boy/Minnikin		11.7
	38 Habib Drive South Lismore	11.72	10.13	9.88	Units 1-3		11.7
	39 Habib Drive South Lismore	11.46	10.62	10.14	Tubemakers		11.7
	40 Habib Drive South Lismore	11.84	10.51	9.95			11.7
	43 Habib Drive South Lismore	11.48	10.88	10.30	Hutton		11.7
	45 Habib Drive South Lismore	11.48	10.92	10.33	Mules		11.7
	47 Habib Drive South Lismore	11.30	10.58	10.46	Eastlands		11.7
	49 Habib Drive South Lismore	11.78	10.88	10.59	Minnikins		11.7
	51 Habib Drive South Lismore	11.55	11.00	10.57	Tom Soward		11.7
	53 Habib Drive South Lismore	11.49	10.65	10.48	Vacant		11.7
	6 Hollingsworth Street South Lismore	12	9.05	8.71	Displays No. 7 (GF 9.63)		12.2
	13 Hollingsworth Street South Lismore	9.24	9.24	9.01	Hernes Trucking		12.2
	15 Hollingsworth Street South Lismore	11.56	9.17	9.22			12.2
	1 Krauss Avenue South Lismore	11.8	10.95	10.93			12
	4 Krauss Avenue South Lismore	10.87	10.69	10.09			12
	5 Krauss Avenue South Lismore	11.71	10.49	10.37	Units 1 to 4		12
	7 Krauss Avenue South Lismore	11.67	10.65	10.4	Units 1 to 4		11.9
	9 Krauss Avenue South Lismore	11.72	10.62	10.49	Units 1 to 4		11.9
	11 Krauss Avenue South Lismore	11.89	10.86	10.59	Units 1 to 2		11.9

Date	Street Address	Floor Level	Gate Level	Road Centre	Description	1in10yr Level	1in100yr Level
	13 Krauss Avenue South Lismore	11.97	10.88	10.66	Units 1 to 3		11.9
	15 Krauss Avenue South Lismore	12.01	11.07	10.82	Norco Stock Feed		11.8
	19 Krauss Avenue South Lismore	12.62	11.14	10.97	Ten Pin Bowl		11.7
	21 Krauss Avenue South Lismore	11.81	11.27	10.68	Cash & Carry		11.8
	18 [23] Krauss Avenue South Lismore	11.72	10.74	10.66	Blackwoods		11.7
	23 Krauss Avenue South Lismore	11.77	10.72	10.59	Ray Towers		11.7
	25 Krauss Avenue South Lismore	11.825	10.61	10.52	Mi Steel		11.7
	13 Kyogle Street South Lismore	13.694	10.864	10.993			12.4
	15 Kyogle Street South Lismore	12.966	10.821	10.984			12.4
	17 Kyogle Street South Lismore	11.66	10.814	10.964			12.4
	20 Kyogle Street South Lismore	11.59	11.59	11.2	BGF Shed		12.4
	21 Kyogle Street South Lismore	10.9	10.9	11.16	Weighbridge		12.4
	21 Kyogle Street South Lismore	10.9	10.9	11.16	Office		12.4
	21 Kyogle Street South Lismore	11.24	11.24	11.24	BGF		12.4
	25 Kyogle Street South Lismore	12.992	10.856	10.908			12.4
	27 Kyogle Street South Lismore	11.517	10.852	10.915			12.4
	29 Kyogle Street South Lismore	11.719	10.859	10.925			12.4
	31 Kyogle Street South Lismore	13.257	10.913	10.9			12.4
	33 Kyogle Street South Lismore	13.047	10.842	10.882			12.4
	35 Kyogle Street South Lismore	13.325	10.827	10.85			12.4
	37 Kyogle Street South Lismore	13.427	10.718	10.827			12.4
	38 Kyogle Street South Lismore	11.85	11.03	10.67	Railways		12.4
	39 Kyogle Street South Lismore	13.367	10.777	10.83			12.4
	45 Kyogle Street South Lismore	12.94	10.7	10.7			12.4
	47 Kyogle Street South Lismore	12.571	10.659	10.66			12.4
	51 Kyogle Street South Lismore	12.941	10.597	10.641			12.4
	53 Kyogle Street South Lismore	12.831	10.592	10.626			12.4
	55 Kyogle Street South Lismore	11.491	10.697	10.613			12.4
	57 Kyogle Street South Lismore	13.101	10.509	10.611			12.4
	59 Kyogle Street South Lismore	12.911	10.431	10.609			12.4
	61 Kyogle Street South Lismore	12.591	10.457	10.613			12.4
	63 Kyogle Street South Lismore	12.69	10.596	10.62			12.4
	65 Kyogle Street South Lismore	12.8	10.7	10.63			12.4
	67 Kyogle Street South Lismore	12.41	10.497	10.65			12.5
	99 Kyogle Street South Lismore	12.72	10.49	10.78			12.5

Date	Street Address	Floor Level	Gate Level	Road Centre	Description	1in10yr Level	1in100yr Level
	101 Kyogle Street South Lismore	12.76	10.56	10.77			12.5
	103 Kyogle Street South Lismore	12.72	10.48	10.82			12.5
	105 [107] Kyogle Street South Lismore	13.40	10.68	10.73			12.5
	109 Kyogle Street South Lismore	12.05	10.99	10.70	Rous Water Depot		12.6
	113 Kyogle Street South Lismore	12.05	10.99	10.70	Rous Water Depot		12.6
	115 Kyogle Street South Lismore	12.05	10.99	10.70	Rous Water Depot		12.6
	1 Maloney Avenue South Lismore	13.76	10.56	10.56	floor level converted from 1978 survey		12.2
	3 Maloney Avenue South Lismore	13.50	10.66	10.59			12.2
	5 Maloney Avenue South Lismore	13.03	10.54	10.45			12.2
	7 Maloney Avenue South Lismore	13.16	10.53	10.41			12.2
	9 Maloney Avenue South Lismore	13.19	10.54	10.37			12.2
	10 Maloney Avenue South Lismore	12.36	10.06	10.36			12.2
	11 Maloney Avenue South Lismore	12.98	10.47	10.37			12.2
	12 Maloney Avenue South Lismore	12.15	10.03	10.38			12.2
	13 Maloney Avenue South Lismore	12.96	10.42	10.37			12.2
	14 Maloney Avenue South Lismore	11.98	9.94	10.39			12.2
	15 Maloney Avenue South Lismore	13.10	10.41	10.40			12.2
	16 Maloney Avenue South Lismore	12.03	10.01	10.38			12.2
	17 Maloney Avenue South Lismore	13.09	10.33	10.36			12.2
	18 Maloney Avenue South Lismore	13.02	10.22	10.35			12.2
	19 Maloney Avenue South Lismore	13.14	10.30	10.35			12.2
	20 Maloney Avenue South Lismore	12.58	10.14	10.33			12.2
	21 Maloney Avenue South Lismore	13.19	10.57	10.34			12.1
	22 Maloney Avenue South Lismore	12.15	9.93	10.34			12.2
	23 Maloney Avenue South Lismore	13.06	10.34	10.36			12.1
	25 Maloney Avenue South Lismore	13.13	10.47	10.48			12.1
	27 Maloney Avenue South Lismore	13.21	10.16	10.48			12.1
	3 Meadow Drive South Lismore	13.88	11.50	11.49			12.8
	6 [4] Meadow Drive South Lismore	14.44	11.78	11.50	6 UNITS		12.8
	5 Meadow Drive South Lismore	14.69	11.68	11.60	7 UNITS		12.8
	10 [8] Meadow Drive South Lismore	14.48	11.85	11.72	Units 1 to 3		12.8
	10 [8] Meadow Drive South Lismore	14.78	11.85	11.72	Units 4 to 5		12.8
	10 [8] Meadow Drive South Lismore	14.58	11.85	11.72	Units 6 to 8		12.8
	9 Meadow Drive South Lismore	14.92	11.89	11.71	2 UNITS		12.8
	11 Meadow Drive South Lismore	14.88	12.02	11.82			12.9

Date	Street Address	Floor Level	Gate Level	Road Centre	Description	1in10yr Level	1in100yr Level
	13 Meadow Drive South Lismore	14.82	11.98	11.88			12.9
	14 Meadow Drive South Lismore	12.56	12.15	11.87			12.9
	15 Meadow Drive South Lismore	14.96	12.06	12.00			13
	17 Meadow Drive South Lismore	14.74	12.15	12.16			13
	18 Meadow Drive South Lismore	15.07	12.03	11.92			12.9
	19 Meadow Drive South Lismore	12.63	12.15	12.16			13
	20 Meadow Drive South Lismore	14.97	12.15	12.16			12.9
	21 Meadow Drive South Lismore	13.21	12.08	12.16			13
	22 Meadow Drive South Lismore	12.79	12.17	12.16			12.9
	3 [5] Newbridge Street South Lismore	12.54	8.47	7.61			12.3
	17 Newbridge Street South Lismore	10.93	8.53	8.17			12.3
	20 Newbridge Street South Lismore	10.93	8.60	8.59			12.3
	21 Newbridge Street South Lismore	12.00	7.81	8.60			12.3
	22 Newbridge Street South Lismore	11.39	9.21	8.79			12.3
	26 Newbridge Street South Lismore	11.68	9.51	9.08			12.3
	27 Newbridge Street South Lismore	8.55	8.55	9.07	Union Street Design Studio (ground floor)		12.3
	27 Newbridge Street South Lismore	11.85	8.55	9.07	Taekwondo (upper floor)		12.3
	30 Newbridge Street South Lismore	11.51	9.57	9.27			12.3
	31 Newbridge Street South Lismore	11.33	9.14	9.21	Displays 100 Crown Street		12.3
	38 Newbridge Street South Lismore	13.10	9.98	10.13			12.3
	39 Newbridge Street South Lismore	11.92	9.92	10.11			12.3
	40 Newbridge Street South Lismore	11.82	10.01	10.14			12.3
	41 Newbridge Street South Lismore	10.86	9.97	10.16			12.3
	43 Newbridge Street South Lismore	12.08	10.04	10.20			12.3
	44 Newbridge Street South Lismore	11.28	9.92	10.20			12.3
	45 Newbridge Street South Lismore	12.24	10.17	10.18			12.3
	46 Newbridge Street South Lismore	12.46	10.06	10.19	YOSEIKAN-RYU KARATE		12.3
	47 Newbridge Street South Lismore	12.04	10.05	10.24			12.3
	48 Newbridge Street South Lismore	12.14	9.94	10.22			12.3
	49 Newbridge Street South Lismore	12.09	10.10	10.25			12.3
	50 Newbridge Street South Lismore	12.07	9.94	10.26			12.3
	51 Newbridge Street South Lismore	12.51	9.97	10.26			12.3
	53 Newbridge Street South Lismore	10.13	10.13	10.26			12.3
	54 Newbridge Street South Lismore	11.55	10.10	10.30	City Apparel		12.3
	54 Newbridge Street South Lismore	11.68	8.75	9.08	Warehouse		12.3

Date	Street Address	Floor Level	Gate Level	Road Centre	Description	1in10yr Level	1in100yr Level
	55 Newbridge Street South Lismore	12.17	10.09	10.30			12.3
	57 Newbridge Street South Lismore	12.09	9.98	10.25			12.3
	59 Newbridge Street South Lismore	12.15	9.99	10.24			12.3
	61 Newbridge Street South Lismore	12.03	10.01	10.23			12.3
	63 Newbridge Street South Lismore	12.44	10.17	10.19			12.3
	66 Newbridge Street South Lismore	11.92	9.99	10.20			12.3
	68 Newbridge Street South Lismore	12.02	10.07	10.21			12.3
	1 Ostrom Street South Lismore	12.58	10.3	10.116		11.4	12.5
	2 Ostrom Street South Lismore	12.93	10.13	10.116		11.3	12.5
	3 Ostrom Street South Lismore	12.06	9.8	9.91		11.4	12.5
	19 Ostrom Street South Lismore	13.51	10.88	9.87	Displays 15	11.4	12.5
	21 Ostrom Street South Lismore	13.72	11.02	9.7			12.5
	23 Ostrom Street South Lismore	12.83	10.82	9.434			12.5
	29 Ostrom Street South Lismore	13.14	10.49	10.45			12.5
	31 Ostrom Street South Lismore	13.09	10.77	11.16			12.5
	32 Ostrom Street South Lismore	12.1	11.29	11.15		11.3	12.5
	33 Ostrom Street South Lismore	13.68	11.05	11.17			12.5
	34 Ostrom Street South Lismore	13.33	11.34	11.17		11.3	12.5
	35 Ostrom Street South Lismore	13.34	11.15	11.24			12.5
	36 Ostrom Street South Lismore	13.79	11.37	11.24		11.3	12.5
	37 Ostrom Street South Lismore	13.88	11.18	11.32			12.5
	38 Ostrom Street South Lismore	13.71	11.36	11.31			12.5
	40 Ostrom Street South Lismore	11.94	11.31	11.35			12.5
	5 Phyllis Street South Lismore	10.88	10.88	11.05	Dr. Dirt		12.4
	6 Phyllis Street South Lismore	11.832	10.8	10.974	Pegasus Screen Printing		12.4
	7 Phyllis Street South Lismore	10.88	10.88	11.05	vacant warehouse		12.4
	9 Phyllis Street South Lismore	10.88	10.88	11.05	vacant warehouse		12.4
	10 Phyllis Street South Lismore	11.815	10.943	10.984	Bison Toner		12.4
	10 Phyllis Street South Lismore	11.844	10.721	10.955	North Coast Bearings		12.4
	11 Phyllis Street South Lismore	10.88	10.88	11.05	vacant warehouse		12.4
	12 Phyllis Street South Lismore	11.46	10.91	11.11			12.4
	13 Phyllis Street South Lismore	13.57	11.26	11.12			12.4
	15 Phyllis Street South Lismore	13.59	11.27	11.17			12.4
	16 Phyllis Street South Lismore	12.92	10.95	11.15			12.4
	17 Phyllis Street South Lismore	13.52	11.19	11.17			12.4

Date	Street Address	Floor Level	Gate Level	Road Centre	Description	1in10yr Level	1in100yr Level
	18 Phyllis Street South Lismore	11.56	10.96	11.19			12.4
	19 Phyllis Street South Lismore	14.036	11.05	11.18			12.4
	20 Phyllis Street South Lismore	13.81	11.08	11.18	(Updated 20/9/99)		12.4
	21 Phyllis Street South Lismore	12.32	11.17	11.17			12.4
	22 Phyllis Street South Lismore	11.18	11.18	11.17			12.4
	23 Phyllis Street South Lismore	14.48	11.15	11.17			12.4
	25 Phyllis Street South Lismore	12.39	11.13	11.24	Shed Nth,Wst cnr Ona,Phyllis		12.4
	25 Phyllis Street South Lismore	13.55	11.15	11.24			12.4
	27 Phyllis Street South Lismore	13.33	11.02	11.27			12.4
	29 Phyllis Street South Lismore	13.89	11.29	11.29			12.4
	31 Phyllis Street South Lismore	13.45	11.02	11.28			12.4
	33 Phyllis Street South Lismore	13.26	10.99	11.27			12.4
	34 Phyllis Street South Lismore	13.49	11.32	11.26			12.4
	35 Phyllis Street South Lismore	13.5	11.13	11.26			12.4
	36 Phyllis Street South Lismore	13.17	11.07	11.27			12.4
	37 Phyllis Street South Lismore	11.97	11.27	11.27			12.4
	38 Phyllis Street South Lismore	11.2	11.2	11.26			12.4
	39 Phyllis Street South Lismore	13.35	11.19	11.27			12.4
	40 Phyllis Street South Lismore	13.36	11.07	11.26			12.4
	41 Phyllis Street South Lismore	13.65	11.11	11.26			12.4
	43 Phyllis Street South Lismore	13.75	11.2	11.27			12.4
	44 Phyllis Street South Lismore	12.4	11.09	11.06	Christadel. hall		12.4
	44 Phyllis Street South Lismore	12.397	11.09	11.06	Church Hall		12.4
	45 Phyllis Street South Lismore	12.2	11.18	11.28			12.4
	50 Phyllis Street South Lismore	13.79	11.08	11.11			12.4
	52 Phyllis Street South Lismore	13.02	11.07	11.11			12.4
	53 Phyllis Street South Lismore	11.89	11.06	11.09			12.5
	54 Phyllis Street South Lismore	11.65	10.94	11.11			12.4
	55 Phyllis Street South Lismore	13.39	11.19	11.12			12.5
	56 Phyllis Street South Lismore	12.95	10.94	11.11			12.4
	57 Phyllis Street South Lismore	13.14	11.19	11.14			12.5
	58 Phyllis Street South Lismore	12.98	10.93	11.12			12.4
	59 Phyllis Street South Lismore	11.82	11.07	11.13			12.5
	60 Phyllis Street South Lismore	13.39	10.9	11.08			12.4
	61 Phyllis Street South Lismore	12.75	10.95	11.11			12.5

Date	Street Address	Floor Level	Gate Level	Road Centre	Description	1in10yr Level	1in100yr Level
	62 Phyllis Street South Lismore	12.7	10.8	11.05			12.4
	63 Phyllis Street South Lismore	12.97	10.94	11.04			12.5
	65 Phyllis Street South Lismore	12.94	10.91	10.98			12.5
	66 Phyllis Street South Lismore	11.69	10.89	10.88			12.5
	67 Phyllis Street South Lismore	13.07	10.88	10.92			12.5
	68 Phyllis Street South Lismore	12.77	10.78	10.87			12.5
	69 Phyllis Street South Lismore	13.04	10.78	10.88			12.5
	70 Phyllis Street South Lismore	13.15	10.81	10.83			12.5
	71 Phyllis Street South Lismore	13.53	10.99	10.8			12.5
	72 Phyllis Street South Lismore	12.66	10.76	10.79			12.5
	73 Phyllis Street South Lismore	13.53	10.76	10.79			12.5
	77 Phyllis Street South Lismore	13.76	10.81	10.79			12.5
	79 Phyllis Street South Lismore	13.38	10.64	10.7	incomplete house		12.5
	83 Phyllis Street South Lismore	11	11	10.77	shed		12.5
	83 Phyllis Street South Lismore	11	11	10.77	Shed		12.5
	85 Phyllis Street South Lismore	12.84	10.63	10.63	house		12.5
	87 Phyllis Street South Lismore	13.09	10.69	10.6			12.5
	89 Phyllis Street South Lismore	12.92	10.62	10.59			12.5
	90 Phyllis Street South Lismore	11.863	10.431	10.59	Sth.Lis. P.S		12.5
	97 Phyllis Street South Lismore	13.64	10.79	10.62			12.5
	99 Phyllis Street South Lismore	13.64	10.61	10.63			12.5
	101 Phyllis Street South Lismore	12.80	10.65	10.66			12.5
	105 Phyllis Street South Lismore	12.92	10.61	10.69			12.6
	107 Phyllis Street South Lismore	13.81	10.88	10.80			12.6
	109 Phyllis Street South Lismore	11.76	10.84	10.83			12.6
	111 Phyllis Street South Lismore	12.45	10.81	10.83	Two units		12.6
	7 Rhodes Street South Lismore	11.86	9.65	9.80			12.2
	8 Rhodes Street South Lismore	12.18	10.01	9.82			12.2
	9 Rhodes Street South Lismore	12.56	9.82	9.91			12.2
	10 Rhodes Street South Lismore	12.64	10.11	9.98			12.2
	11 Rhodes Street South Lismore	11.96	10.08	10.04			12.2
	12 Rhodes Street South Lismore	11.99	10.26	10.09			12.2
	13 Rhodes Street South Lismore	12.79	10.23	10.10			12.2
	14 Rhodes Street South Lismore	12.35	10.05	10.13			12.2
	16 Rhodes Street South Lismore	12.21	10.15	10.20			12.2

Date	Street Address	Floor Level	Gate Level	Road Centre	Description	1in10yr Level	1in100yr Level
	17 Rhodes Street South Lismore	12.82	10.11	10.19			12.2
	18 Rhodes Street South Lismore	12.48	10.13	10.18			12.2
	19 Rhodes Street South Lismore	12.75	10.23	10.18			12.2
	20 Rhodes Street South Lismore	12.21	10.13	10.15			12.2
	21 Rhodes Street South Lismore	12.90	10.23	10.14			12.2
	22 Rhodes Street South Lismore	11.93	9.95	10.21			12.2
	23 Rhodes Street South Lismore	12.87	10.16	10.17			12.2
	24 Rhodes Street South Lismore	10.28	10.11	10.14	Our Lady of Christians School		12.2
	25 Rhodes Street South Lismore	10.27	10.00	10.20	Church Hall		12.2
	37 Rhodes Street South Lismore	12.60	9.68	10.08			12.2
	39 Rhodes Street South Lismore	11.60	9.57	10.03			12.2
	40 Rhodes Street South Lismore	12.32	9.94	10.33			12.2
	41 Rhodes Street South Lismore	11.96	9.77	10.16			12.2
	43 Rhodes Street South Lismore	12.12	9.81	10.31			12.2
	45 Rhodes Street South Lismore	12.76	9.99	10.36			12.2
	2 Scott Place South Lismore	12.26	11.97	11.92			12.9
	3 Scott Place South Lismore	14.13	12.12	12.21			12.9
	4 Scott Place South Lismore	12.36	12.24	12.21			12.9
	5 Scott Place South Lismore	15.05	12.26	12.21	Units 1 to 6		12.9
	5 Snow Street South Lismore	10.21	10.12	10.16	Jasen Fabrications		12.1
	6 Snow Street South Lismore	10.23	9.94	10.2	Prodger Bros Const Shed		12.1
	7 Snow Street South Lismore	10.97	10.4	10.2	Units 1-4		12.1
	7 Snow Street South Lismore	11.01	10.38	10.19	Units 5-8		12.1
	9 Snow Street South Lismore	12.36	10.17	10.22			12.1
	10 Snow Street South Lismore	10.24	10.06	10.23	Geoff McDonald Auto Electrician		12.1
	11 Snow Street South Lismore	10.33	10.26	10.22	BOC Gas & Gear		12.1
	12 Snow Street South Lismore	10.24	10.11	10.22	V. Mc Namara Engineering		12.1
	15 [13] Snow Street South Lismore	10.48	10.28	10.21	Boral Tyres		12.1
	13 Snow Street South Lismore	10.64	10.2	10.22	Hensleys Carriers		12.1
	14 Snow Street South Lismore	10.34	10.11	10.21	6 Units (Matt Bidner Auto)		12.1
	16 Snow Street South Lismore	11.32	10.27	9.98	3 Units		12.1
	17 Snow Street South Lismore	10.31	10.1	10.11	2 Units		12.1
	18 Snow Street South Lismore	10.71	10.25	10.05	4 Units		12.1
	19 Snow Street South Lismore	11.13	10.04	10	Electrical		12.1
	19 Snow Street South Lismore	10.98	9.95	9.95	Bruces Bus Service		12.1

Date	Street Address	Floor Level	Gate Level	Road Centre	Description	1in10yr Level	1in100yr Level
	20 Snow Street South Lismore	11.92	11.09	9.88	4 Units		12.1
	22 Snow Street South Lismore	12	11.09	9.81	7 Units		12.1
	4 Taylor Street South Lismore	11.26	11.19	11.04	Pethers Auto Painting		12.3
	5 Taylor Street South Lismore	11.9	10.53	10.61	Norco Head Office		12.2
	5 Taylor Street South Lismore	10.62	10.62	10.74	Maintenance Shed - Rear Head Office		12.2
	5 Taylor Street South Lismore	11.26	11	11.04	Norco Maintenance		12.2
	6 Taylor Street South Lismore	11.55	11.08	11.09	Norco		12.2
	11 Taylor Street South Lismore	11.35	9.67	9.52			12.2
	3 Three Chain Road South Lismore	11.47	10.3	10.18	Lismore Motor Cycles		12.1
	3 Three Chain Road South Lismore	11.97	10.3	10.18	Units 4-9		12.1
	6 Three Chain Road South Lismore	11.88	10.77	10.03	LISMORE AUTO WRECKERS		12
	7 Three Chain Road South Lismore	10.18	10.1	10.11	Caravan City / Auto Repairs		12.1
	9 Three Chain Road South Lismore	11.29	9.96	10.03	Nth Coast Motor Cycles/Franks Mufflers		12.1
	12 Three Chain Road South Lismore	11	10.71	9.93	Phillip Hunter Smash Repairs		12
	13 Three Chain Road South Lismore	11.6	10.32	10.08	Bailey Car Sales		12.1
	13 Three Chain Road South Lismore	11.55	10.32	10.08	BJ Auto Electrics		12.1
	15 Three Chain Road South Lismore	11.54	10.34	10.09	Actrol		12.1
	16 Three Chain Road South Lismore	11.62	10.86	10.64	Units 1 & 2		12
	17 Three Chain Road South Lismore	11.54	10.38	10.1	Reece		12
	19 Three Chain Road South Lismore	11.27	10.04	10.01	Lismore Service Centre		12
	21 Three Chain Road South Lismore	11.44	9.97	9.96	Australia Post		12
	23 Three Chain Road South Lismore	11.12	9.84	9.91	Lifeline Distribution Centre		12
	24 Three Chain Road South Lismore	12.2	10.72	9.93	Eagles		12
	25 [29] Three Chain Road South Lismore	11.16	9.92	9.87	Qld Carways		12
	28 Three Chain Road South Lismore	11.44	10.76	9.92	Indoor Sports		12
	40 Three Chain Road South Lismore	10.4	10.4	10.4	Hanger - NE corner	10.3	11.7
	1/40 Three Chain Road South Lismore	9.85	9.85	9.85	Hanger - SW corner (Aero Club)	10.1	11.7
	3/40 Three Chain Road South Lismore	9.77	9.77	9.77	Hanger - SE corner (Neville Bienke)	10	11.7
	8/40 Three Chain Road South Lismore	9.97	9.97	9.97	Hanger - NW corner (Aero Enterprises)	10.3	11.7
	45 Three Chain Road South Lismore	10.498	10.109	11.033	Lismore Powder Coating		12
	1 Union Street South Lismore	10.347	10.347	11.565	Jack Leu & Sons	11	12.5
	7 Union Street South Lismore	11.859	10.761	10.819		11	12.5
	10 Union Street South Lismore	11.486	10.756	11.129	Noree Couriers	11	12.4
	12 Union Street South Lismore	10.78	10.631	11.01	NC Tools	11	12.4
	14 Union Street South Lismore	10.687	10.505	10.903	PJ Fletcher Automotive	11	12.4

Date	Street Address	Floor Level	Gate Level	Road Centre	Description	1in10yr Level	1in100yr Level
	13 Union Street South Lismore	12.095	9.725	9.725		11.2	12.5
	15 Union Street South Lismore	12.261	9.857	9.63		11.2	12.5
	18 Union Street South Lismore	10.728	10.376	10.469	Air-Care	11	12.4
	20 Union Street South Lismore	10.331	10.325	10.28	Novus	11	12.4
	21 Union Street South Lismore	11.486	9.305	9.549		11.2	12.5
	22 Union Street South Lismore	10.509	10.187	10.111	Dom Rosa	11	12.4
	23 Union Street South Lismore	12.86	10.259	10.693	fronts Frank Street	11.2	12.5
	25 Union Street South Lismore	11.8	9.4	9.5	levels converted from 1978 survey	11.2	12.5
	27 Union Street South Lismore	12.3	9.065	9.47	floor level converted from 1978 survey	11.2	12.5
	29 Union Street South Lismore	12.34	9.121	9.43		11.2	12.5
	30 Union Street South Lismore	10.271	10.27	10.1	Pirlos Tyre Centre	11	12.4
	31 Union Street South Lismore	12.167	9.076	9.417		11.2	12.5
	33 Union Street South Lismore	13.6	8.96	9.39		11.2	12.5
	34 Union Street South Lismore	11.007	10.179	10.1	Hurfords Building Sup	10.9	12.4
	37 Union Street South Lismore	12.057	8.841	9.37		11.2	12.5
	38 Union Street South Lismore	12.495	11.707	11.35	Railway Station		12.4
	39 Union Street South Lismore	11.787	9.227	9.51		11.2	12.5
	45 Union Street South Lismore	13.017	9.072	9.46		11.2	12.5
	47 Union Street South Lismore	10.697	9.09	9.51	Fitzroy House - ground floor	11.2	12.5
	49 Union Street South Lismore	13.817	9.123	9.552		11.2	12.5
	51 Union Street South Lismore	13.017	9.123	9.58		11.2	12.5
	53 Union Street South Lismore	13.347	9.287	9.63		11.2	12.5
	55 Union Street South Lismore	12.587	9.417	9.68	ground floor 9.797	11.2	12.5
	57 Union Street South Lismore	12.547	9.437	9.737		11.2	12.5
	59 Union Street South Lismore	10.489	9.584	9.93	Lismore Outboards	11.2	12.5
	63 Union Street South Lismore	10.769	10.253	10.317	Lismore (Frank Vanz) Tyre Co	11.2	12.5
	65 Union Street South Lismore	10.277	9.727	10.12	Vac Lot Beside 63 Union St	11.2	12.5
	69 Union Street South Lismore	10.987	10.681	10.93			12.5
	69 Union Street South Lismore	11.01	10.636	10.803	Op Shop		12.5
	69 Union Street South Lismore	10.527	10.527	10.69	Nursery		12.5
	71 Union Street South Lismore	11.799	10.81	11.078	Health Centre (closed)		12.4
	73 Union Street South Lismore	11.809	10.96	11.075	Post Office		12.4
	75 Union Street South Lismore	11.46	11.067	11.07	Hair Transformers		12.4
	77 Union Street South Lismore	12.247	11.155	11.3	Success Martial Arts		12.4
	81 Union Street South Lismore	12.247	11.155	11.3	Success Martial Arts		12.4

Date	Street Address	Floor Level	Gate Level	Road Centre	Description	1in10yr Level	1in100yr Level
	83 Union Street South Lismore	11.372	11.207	11.409	Casagrande's Foodland		12.4
	85 Union Street South Lismore	11.338	11.267	11.477	South Lismore Newsagency		12.4
	87 Union Street South Lismore	11.456	11.777	11.477	Southside Takeaways		12.4
	87 Union Street South Lismore	11.487	11.313	11.577			12.4
	89 Union Street South Lismore	11.487	11.313	11.577			12.4
	91 Union Street South Lismore	11.487	11.313	11.514	Southside Hot Bread		12.4
	109 Union Street South Lismore	11.123	10.869	11.276	Egans Premier Meats		12.4
	111 Union Street South Lismore	11.089	10.889	11.262	Creative Tattoos		12.4
	113 Union Street South Lismore	11.1	10.95	10.93	Liberty Service Station		12.4
	115 Union Street South Lismore	11.48	10.68	10.92			12.3
	117 Union Street South Lismore	13.15	10.71	10.87			12.3
	119 Union Street South Lismore	12.91	10.70	10.86			12.3
	120 Union Street South Lismore	10.79	10.79	10.88	Norco		12.3
	121 Union Street South Lismore	12.92	10.68	10.84			12.3
	125 Union Street South Lismore	10.76	10.60	10.80	Units 1 to 3		12.3
	126 Union Street South Lismore	10.86	10.6	10.7	Mobil (next to Norco after bridge)		12.3
	127 Union Street South Lismore	10.67	10.67	10.78	Butcher		12.3
	129 Union Street South Lismore	10.68	10.47	10.52	Ex - Kennedy's Car Sales		12.3
	134 Union Street South Lismore	11.58	10.44	10.13			12.3
	135 Union Street South Lismore	10.79	10.14	9.77			12.3
	135 Union Street South Lismore	10.72	10.39	10.56	Corner shop		12.3
	136 Union Street South Lismore	11.73	10.39	9.85			12.3
	137 Union Street South Lismore	10.25	9.77	9.54			12.3
	139 Union Street South Lismore	12.01	9.55	9.44			12.3
	140 Union Street South Lismore	11.37	9.96	9.54			12.3
	141 Union Street South Lismore	10.01	9.35	9.34	Perkins Caravans		12.3
	142 Union Street South Lismore	11.9	9.73	9.42			12.3
	144 Union Street South Lismore	11.99	8.96	9.17			12.3
	148 Union Street South Lismore	11.2	8.01	9.1			12.2
	155 Union Street South Lismore	12.02	8.37	9.15			12.2
	157 Union Street South Lismore	12.09	8.36	9.02			12.2
	158 Union Street South Lismore	9.21	8.80	8.88			12.2
	159 Union Street South Lismore	12.06	8.69	8.92			12.2
	160 Union Street South Lismore	12.17	8.96	8.95			12.2
	162 Union Street South Lismore	11.70	9.02	9.05			12.2

Date	Street Address	Floor Level	Gate Level	Road Centre	Description	1in10yr Level	1in100yr Level
	165 Union Street South Lismore	10.77	9.96	9.74	Catholic Church		12.2
	166 Union Street South Lismore	12.08	9.71	9.36			12.2
	168 Union Street South Lismore	12.47	9.96	9.44			12.2
	169 Union Street South Lismore	10.17	9.96	9.74	Meeting Hall		12.2
	170 Union Street South Lismore	12.49	10.26	9.78			12.2
	171 Union Street South Lismore	12.31	10.23	10.15			12.2
	172 Union Street South Lismore	12.38	10.17	9.88			12.2
	173 Union Street South Lismore	12.20	10.23	10.18			12.2
	174 Union Street South Lismore	12.44	10.19	10.11			12.2
	175 Union Street South Lismore	12.23	10.08	10.13			12.2
	176 Union Street South Lismore	12.38	10.18	10.17			12.2
	177 Union Street South Lismore	11.84	9.82	9.83			12.2
	178 Union Street South Lismore	11.72	9.91	10.07			12.2
	181 Union Street South Lismore	11.42	8.73	9.33			12.2
	183 Union Street South Lismore	12.24	9.74	9.82			12.2
	185 Union Street South Lismore	12.22	10.12	10.19			12.2
	187 Union Street South Lismore	13.18	10.26	10.36			12.2
	188 Union Street South Lismore	12.22	9.75	9.74			12.2
	190 Union Street South Lismore	12.13	10.02	9.92			12.2
	192 Union Street South Lismore	12.52	10.35	10.34			12.2
	194 Union Street South Lismore	12.52	10.33	10.44			12.2
	196 Union Street South Lismore	12.49	10.39	10.57			12.2
	198 Union Street South Lismore	12.61	10.39	10.61			12.2
	200 Union Street South Lismore	12.55	10.48	10.72			12.2
	201 Union Street South Lismore	11.25	10.49	10.89			12.2
	202 Union Street South Lismore	12.55	10.44	10.84			12.2
	204 Union Street South Lismore	12.85	10.5	10.97			12.2
	206 Union Street South Lismore	12.47	10.49	11.01			12.2
	209 Union Street South Lismore	13.03	10.24	10.82			12.2
	210 Union Street South Lismore	11.1	10.73	10.84	Mills		12.2
	211 Union Street South Lismore	12.73	10.22	10.65			12.2
	213 Union Street South Lismore	12.67	10.27	10.55			12.1
	217 Union Street South Lismore	12.83	10.14	10.4	Jansens		12.1
	219 Union Street South Lismore	12.56	10.04	10.33	vacant		12.1
	223 Union Street South Lismore	11.11	9.85	9.73	Pirlos		12.1

Date	Street Address	Floor Level	Gate Level	Road Centre	Description	1in10yr Level	1in100yr Level
	228 Union Street South Lismore	10.95	10.21	10.28	Kitchen Bathroom Wardrobes		12.1
	233 Union Street South Lismore	12.29	9.92	9.93			12.1
	234 Union Street South Lismore	10.08	10.04	10.02	Bikeworx		12.1
	235 Union Street South Lismore	12.38	10.13	10.28			12.1
	237 Union Street South Lismore	11.17	10.41	10.24	Caltex		12.1
	237 Union Street South Lismore	11.2	10.31	10.49	Caltex Airport		12.1
	240 Union Street South Lismore	12.31	9.89	9.89	Country Energy Office		12.1
	244 Union Street South Lismore	12.08	9.89	9.89	Country Energy Workshop		12.1
	1/75 Union Street South Lismore	11.49	11.033	11.07			12.4
	1/101 Union Street South Lismore	11.217	11.021	11.362	AE Campbell & Son Plumbers		12.4
	1/105 Union Street South Lismore	11.101	10.927	11.332	Lismore Pawn Brokers		12.4
	113a Union Street SOUTH LISMORE	11.24	10.90	11.00	BP Depot		12.3
	2/105 Union Street South Lismore	11.101	10.927	11.332	Cake Shop		12.4
	2-3/101 Union Street South Lismore	11.217	11.021	11.362	Phil Fitzgerald Mower & Cycles		12.4
	3/105 Union Street South Lismore	11.001	10.912	11.312	Kerrie's Just Cutz		12.4
	4/101 Union Street South Lismore	11.167	10.989	11.352	Station Laundromat		12.4
	4/105 Union Street South Lismore	11.001	10.912	11.312	Sound Solution		12.4
	2 Wardell Street South Lismore	12.085	10.62	10.74	Studio 1 - Brick Building		12.2
	3 Webster Street South Lismore	13.32	10.96	11.09			12.6
	7 Webster Street South Lismore	13.39	11.09	11.11			12.6
	10 Webster Street South Lismore	13.19	10.9	11.16			12.5
	11 Webster Street South Lismore	13.27	11.08	11.16			12.6
	12 Webster Street South Lismore	13.53	11.16	11.27			12.5
	14 Webster Street South Lismore	13.76	11.21	11.26			12.6
	15 Webster Street South Lismore	13.61	11.13	11.19			12.6
	16 Webster Street South Lismore	13.26	11.21	11.25			12.6
	18 Webster Street South Lismore	13.77	11.03	11.2			12.6
	24 Webster Street South Lismore	12.99	10.75	10.87			12.6
	26 Webster Street South Lismore	13.43	10.78	10.89			12.6
	27 Webster Street South Lismore	13.12	10.79	10.87			12.6
	28 Webster Street South Lismore	13.24	10.733	10.9			12.6
	30 Webster Street South Lismore	12.83	10.81	10.9			12.6
	31 Webster Street South Lismore	13.12	10.76	10.87			12.6
	33 Webster Street South Lismore	13.04	10.73	10.87			12.6
	35 Webster Street South Lismore	13.29	10.9	11.1			12.6

Date	Street Address	Floor Level	Gate Level	Road Centre	Description	1in10yr Level	1in100yr Level
	37 Webster Street South Lismore	14.056	11.104	11.5			12.6
	20 Wilson Street South Lismore	12.79	10.88	11.8			12.7
	22 Wilson Street South Lismore	13.65	11.39	11.925			12.7
	25 Wilson Street South Lismore	12.41	11.73	11.86	Sth Lismore Bowling Club		12.7
	38 Wilson Street South Lismore	13.826	11.897	13.651			12.6
	40 Wilson Street South Lismore	13.8	11.53	11.86	displays 44		12.6
	41 Wilson Street South Lismore	12.69	11.59	11.612	Scout Hall		12.6
	42 Wilson Street South Lismore	12.13	11.7	11.92			12.6
	45 Wilson Street South Lismore	11.67	11.35	11.36	RSL Hall		12.6
	46 Wilson Street South Lismore	13.66	11.58	11.57			12.6
	50 Wilson Street South Lismore	13.43	11.36	11.49			12.6
	62 Wilson Street South Lismore	13.03	10.96	11.07			12.6
	64 Wilson Street South Lismore	13.48	10.89	10.98			12.6
	66 Wilson Street South Lismore	13.15	10.9	10.97			12.6
	68 Wilson Street South Lismore	12.85	10.82	10.93			12.6
	70 Wilson Street South Lismore	13.21	10.81	10.96			12.6
	74 Wilson Street South Lismore	13.33	10.91	10.92			12.6
	85 Wilson Street South Lismore	13.13	10.51	10.73			12.5
	86 Wilson Street South Lismore	12.96	10.74	10.72			12.5
	87 Wilson Street South Lismore	12.72	10.52	10.70			12.5
	89 Wilson Street South Lismore	11.83	10.65	10.69			12.5
	91 Wilson Street South Lismore	11.66	10.51	10.71			12.5
	93 Wilson Street South Lismore	12.75	10.58	10.69			12.5
	101 Wilson Street South Lismore	12.43	11.27	10.67	Harvey Norman		12.5
	101 Wilson Street South Lismore	12.06	11.27	10.67	Shell - west		12.5
	109 Wilson Street South Lismore	12.30	10.20	10.40	Norco Rural Stores Warehouse		12.4
	109 Wilson Street South Lismore	12.31	10.20	10.40	Norco Co-Op Ltd		12.4
	109 Wilson Street South Lismore	12.30	10.20	10.40	Abruzzi Organics		12.4
	109 Wilson Street South Lismore	12.30	10.20	10.40	Mitre 10 Handy Hardware		12.4
	116 Wilson Street South Lismore	10.65	10.52	10.81	Shell - east		12.4
	119 Wilson Street South Lismore	12.87	9.97	10.32	Displays 107		12.3
	121 Wilson Street South Lismore	10.17	10.12	10.22	Morrissey Cabinets (Office floor level)		12.3
	124 Wilson Street South Lismore	10.57	10.57	10.56			12.4
	126 Wilson Street South Lismore	12.40	10.17	10.42			12.4
	128 Wilson Street South Lismore	10.33	9.94	9.90	End Rust		12.4

Date	Street Address	Floor Level	Gate Level	Road Centre	Description	1in10yr Level	1in100yr Level
	156 Wilson Street South Lismore	11.93	9.45	9.64			12.3