

NORTH LISMORE SUBURB Flood & Floor Levels

Floor/Flood Level Disclaimer

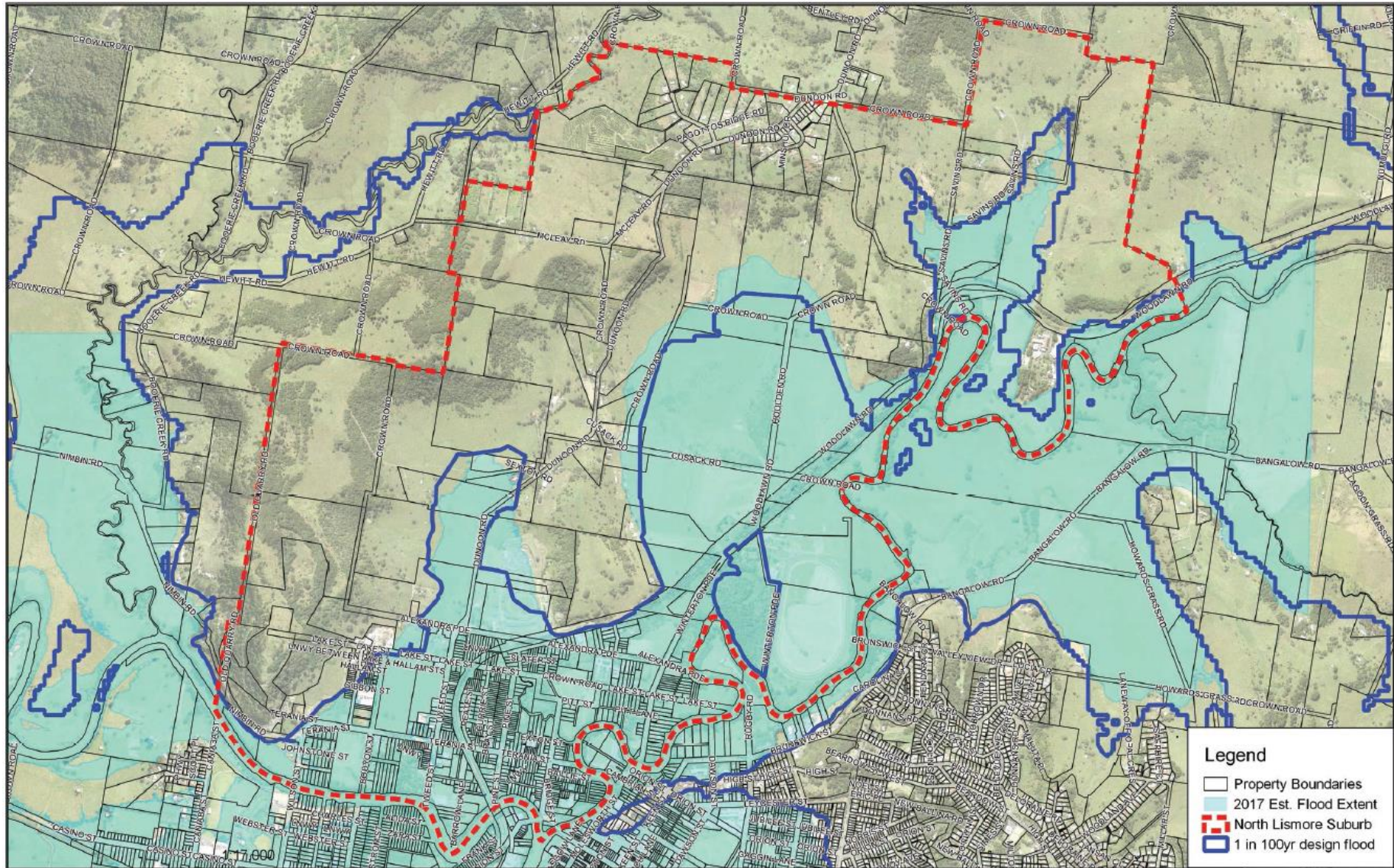
The information contained in this document has been provided to the Council from various sources. Some of the information has been verified by Council survey but in most instances the floor levels have been provided to Council and this document is a collation of the data. Therefore the information contained in this document is not endorsed by the Council as without error, omission or misdescription.

In providing the information in this document, Council does not profess to have any professional expertise or qualifications in matters covered by this information. Nor does Council hold itself out or represent to individuals or to the general public that it is or remains at any time the sole source of information on floods in Lismore and their impact.

The Council accordingly expressly disclaims all and any liability and responsibility in respect of loss, damage or injury to person or property arising from anything done or omitted to be done by any person in reliance, whether wholly or in part, upon any part of this information.

Any person having regard to the information contained in this document is encouraged to seek, at their discretion, all other sources of information on the subject matter as they consider appropriate, which may include local knowledge and/or professional advice.

The North Lismore suburb boundaries are shown on the map overleaf along with the estimated extent of the 2017 flood and the 1 in 100 year ARI design flood extent.



North Lismore Boundary and Estimated Flood Extents



1:17,000



Lismore Flood and Floor Levels – North Lismore

1. Floor levels were initially recorded December 1996 with updates in March 2006 and at various times since. The first column in the table below notes the dates where updates have occurred. Where no colour is shown the data was collected in 1996.

2. All levels are in metres AHD (Australian Height Datum).

3. Rowing Club Gauge reading for expected flood events 1 in 10 year ARI is 10.95 metres AHD // 1 in 100 year ARI 12.4 metres AHD.

4. Note during a flood event the estimated flood height is measured at the Rowing Club Gauge. Due to flood gradient the flood height at the property will not be the same as that estimated at the Gauge and could differ by up to 0.6 metres or more (lower or higher), depending on the property's location.

July 2014
Mar 2006
Jul 2005
Jan 2005
July 2004
June 2004
January+ 2004
July 2003
May 2003
March 2003
January 2003
October 2002
August 2002
May 2002

Date	Street Address	Floor Level	Gate Level	Road Centre	Description	1in10yr Level	1in100yr Level
	25 Alexandra Parade North Lismore	9.62	7.35	7.69			
	63 Alexandra Parade North Lismore	8.95	8.27	8.46	/ RRHS Bk Bld	11.2	12.6
	65 Alexandra Parade North Lismore	11.13	8.09	8.98	owned by RRHS - 1st Floor	11.2	12.6
	65 Alexandra Parade North Lismore	8.10	8.09	8.98	owned by RRHS - ground floor	11.2	12.6
	71 Alexandra Parade North Lismore	13.00	8.52	9.87	DISPLAYS 17	11.2	12.6
	86 Alexandra Parade North Lismore	11.88	8.57	9.87		11.2	12.6
	1/87 Alexandra Parade North Lismore	8.94	8.61	9.86		11.2	12.6
	2/87 Alexandra Parade North Lismore	8.93	8.61	9.86		11.2	12.6
	3/87 Alexandra Parade North Lismore	9.65	8.61	9.86		11.2	12.6
	3/87 Alexandra Parade North Lismore	10.21	8.61	9.86	Vanity	11.2	12.6
	4/87 Alexandra Parade North Lismore	9.90	8.61	9.86		11.2	12.6
	4/87 Alexandra Parade North Lismore	12.79	8.61	9.86	Office	11.2	12.6
	5/87 Alexandra Parade North Lismore	10.13	8.61	9.86		11.2	12.6
	6/87 Alexandra Parade North Lismore	9.15	8.61	9.86		11.2	12.6
	7/87 Alexandra Parade North Lismore	9.14	8.61	9.86		11.2	12.6

Date	Street Address	Floor Level	Gate Level	Road Centre	Description	1in10yr Level	1in100yr Level
	8/87 Alexandra Parade North Lismore	9.54	8.61	9.86		11.2	12.6
	9/87 Alexandra Parade North Lismore	9.95	8.61	9.86		11.2	12.6
	7a/87 Alexandra Parade North Lismore	9.17	8.61	9.86		11.2	12.6
	88 Alexandra Parade North Lismore	13.11	9.01	9.86		11.2	12.6
	90 Alexandra Parade North Lismore	13.11	9.10	9.86		11.2	12.6
	92 Alexandra Parade North Lismore	11.34	9.15	9.85		11.2	12.6
	93 Alexandra Parade North Lismore	9.84	9.33	9.88	/ Lis Diesel Ser W'shop	11.2	12.6
	93 Alexandra Parade North Lismore	12.66	9.33	9.88	/ Lis Diesel Ser Office	11.2	12.6
	94 Alexandra Parade North Lismore	13.56	9.25	9.87		11.2	12.6
	95 Alexandra Parade North Lismore	12.59	9.14	9.84		11.2	12.6
	96 Alexandra Parade North Lismore	12.71	9.35	10.82		11.2	12.6
	97 Alexandra Parade North Lismore	13.29	9.44	9.85	DISPLAYS 141	11.2	12.6
	106 Alexandra Parade North Lismore	11.57	9.64	9.91		11.2	12.6
	110 Alexandra Parade North Lismore	11.37	9.67	9.93		11.2	12.6
	112 Alexandra Parade North Lismore	12.39	9.70	9.69	DISPLAYS 114	11.2	12.6
	8 Arthur Street North Lismore	9.05	9.01	8.82	/ Timber Yard Office	11.2	12.6
	11 Arthur Street North Lismore	12.43	9.12	9.04		11.2	12.7
	12 Arthur Street North Lismore	11.91	9.01	8.82	/ Timber Yard Res	11.2	12.6
	13 Arthur Street North Lismore	11.87	9.51	9.68		11.2	12.7
	3 Baillie Street North Lismore	11.30	9.17	9.34		11	12.5
	5 Baillie Street North Lismore	11.53	9.32	9.41		11	12.5
	7 Baillie Street North Lismore	13.31	9.40	9.46		11	12.5
	9 Baillie Street North Lismore	12.67	9.40	9.48		11	12.5
	10 Baillie Street North Lismore	10.98	8.80	8.52	displays 8	11	12.5
	12 Baillie Street North Lismore	11.26	8.92	8.81		11	12.5
	16 Baillie Street North Lismore	11.40	9.20	9.18		11	12.5
	18 Baillie Street North Lismore	11.47	9.21	9.29		11	12.5
	20 Baillie Street North Lismore	11.18	9.16	9.32	displays 22	11	12.5
	24 Baillie Street North Lismore	11.23	9.21	9.39		11	12.5
	26 Baillie Street North Lismore	13.26	9.32	9.46		11	12.5
	28 Baillie Street North Lismore	11.37	9.33	9.48		11	12.5
	30 Baillie Street North Lismore	11.55	9.45	9.53		11	12.5
	32 Baillie Street North Lismore	11.71	9.61	9.53		11	12.4
	24 Barrow Lane North Lismore	11.02	10.4	10.36	Italo Club Entrance	11.3	12.5
	36 Barrow Lane North Lismore	12.98	10.77	11.02		11.2	12.5

Date	Street Address	Floor Level	Gate Level	Road Centre	Description	1in10yr Level	1in100yr Level
	37 Barrow Lane North Lismore	12.84	10.74	10.91	displays 11 Crane Street	11.2	12.5
	38 Barrow Lane North Lismore	13.05	10.72	10.99		11.2	12.5
	39 Barrow Lane North Lismore	13.16	10.54	10.85		11.2	12.5
	40 Barrow Lane North Lismore	13.08	10.62	10.85		11.2	12.5
	11 Bridge Street North Lismore	10.63	10.55	10.45	Winsome Hotel	11	12.4
	14 Bridge Street North Lismore	10.09	10.09	10.47	Youngberry's Smash Repairs	11	12.4
	17 Bridge Street North Lismore	10.22	10.18	10.46	Animal Welfare Op Shop	11	12.4
	18 Bridge Street North Lismore	10.45	10.11	10.46	William Riley Funerals	11	12.4
	18 Bridge Street North Lismore	12.90	10.20	10.46	S/room	11	12.4
	19 Bridge Street North Lismore	10.13	10.15	10.45	Bison toner	11	12.4
	20 Bridge Street North Lismore	12.61	10.18	10.45		11	12.4
	21 Bridge Street North Lismore	8.46	8.30	10.44	Skating Rink	11	12.4
	22 Bridge Street North Lismore	12.53	10.19	10.44	Doctors Surgery	11	12.4
	22a Bridge Street North Lismore	12.36	10.20	10.43		11	12.4
	24 Bridge Street North Lismore	12.51	10.36	10.40		11	12.4
	27 Bridge Street North Lismore	11.17	10.07	10.44		11	12.4
	30 Bridge Street North Lismore	10.57	10.28	10.43		11	12.4
	30 Bridge Street North Lismore	13.39	10.28	10.43		11	12.4
	30 Bridge Street North Lismore	13.39	10.28	10.43	Clone Surfing	11	12.4
	30 Bridge Street North Lismore	10.57	10.28	10.43		11	12.4
	33 Bridge Street North Lismore	11.22	10.15	10.38		11	12.4
	35 Bridge Street North Lismore	10.06	10.06	10.43	/39 Trevor Hickey Auto Electrics	11	12.4
	38 Bridge Street North Lismore	11.37	10.34	10.42	Aussie Digger Camping World	11	12.5
	39 Bridge Street North Lismore	11.70	9.99	10.42		11	12.4
	40 Bridge Street North Lismore	11.50	10.35	10.38		11	12.5
	43 Bridge Street North Lismore	10.26	10.11	10.40	Blue Tongue Restaurant	11	12.4
	45 Bridge Street North Lismore	11.30	9.98	10.38		11	12.4
	46 Bridge Street North Lismore	12.68	10.34	10.37		11.1	12.5
	49 Bridge Street North Lismore	12.10	10.00	10.37		11	12.4
	51 Bridge Street North Lismore	10.11	9.98	10.37	North Lismore Newsagency	11	12.4
	52 Bridge Street North Lismore	12.98	10.34	10.38		11.1	12.5
	55 Bridge Street North Lismore	10.00	9.96	10.38	Spin Cycle	11	12.5
	57 Bridge Street North Lismore	9.40	9.40	9.53	BECKINSALES Monumental Masons	11	12.4
	57 Bridge Street North Lismore	9.997	9.963	10.39	DISUSED SHOP	11	12.5
	58 Bridge Street North Lismore	13.31	10.40	10.62		11.1	12.5

Date	Street Address	Floor Level	Gate Level	Road Centre	Description	1in10yr Level	1in100yr Level
	59 Bridge Street North Lismore	10.13	10.02	10.39		11	12.5
	62 Bridge Street North Lismore	10.596	10.596	10.392	Liberty Service Station	11.1	12.5
	63 Bridge Street North Lismore	11.16	10.04	10.39	Horseland	11	12.5
	67 Bridge Street North Lismore	12.95	9.87	10.25	Almac Auto Upholstery	11	12.5
	68a Bridge Street North Lismore	10.50	10.26	10.62	Northern Rivers Hotel	11.1	12.5
	71 Bridge Street North Lismore	11.56	9.68	10.23		11	12.5
	73 Bridge Street North Lismore	11.53	9.67	9.99		11	12.5
	74 Bridge Street North Lismore	13.06	10.18	9.80	letterbox 72	11.1	12.5
	75 Bridge Street North Lismore	11.43	9.58	9.78		11	12.5
	76 Bridge Street North Lismore	12.87	9.60	9.47	Northern NSW Investigations	11.1	12.5
	79 Bridge Street North Lismore	11.65	9.36	9.51		11.1	12.5
	83 Bridge Street North Lismore	6.86	6.60	6.61	School Ag shed	11.1	12.6
	131 Bridge Street North Lismore	9.98	7.93	8.51		11.2	12.6
	136 Bridge Street North Lismore	12.22	9.44	9.42		11.2	12.6
	1 Crane Street North Lismore	13.33	10.1	10.15		11.2	12.5
	3 Crane Street North Lismore	13	10.4	10.42		11.2	12.5
	5 Crane Street North Lismore	13.11	10.5	10.66		11.2	12.5
	7 Crane Street North Lismore	13.07	10.59	10.71	No 17 ?	11.2	12.5
	11 Crane Street North Lismore	12.84	10.74	10.91		11.2	12.5
	19 Crane Street North Lismore	11.98	10.03	10.3		11.3	12.5
	9 Currie Street North Lismore	13.30	9.14	9.53		11.2	12.6
	11 Currie Street North Lismore	13.40	9.73	9.70		11.2	12.6
	7 Exton Street North Lismore	9.32	9.10	9.47	Wilspeed Auto Repairs	11.1	12.6
	15 Exton Street North Lismore	13.12	8.90	9.24		11.1	12.6
	20 Exton Street North Lismore	13.24	8.92	9.24		11.1	12.6
	11 Gibbon Street North Lismore	13.54	11.44	11.61			12.7
	13 Gibbon Street North Lismore	13.81	11.51	11.72			12.7
	8 Gray Street North Lismore	11.89	10.00	10.20		11.3	12.6
	12 Hallam Street North Lismore	12.5	11.82	11.89			12.7
	1 Johnstone Lane North Lismore	13.31	10.34	10.37		11.6	12.7
	7 Johnstone Lane North Lismore	12.74	10.19	10.16		11.6	12.7
	66 Lake Street North Lismore	13.12	8.83	8.53		11.2	12.6
	70 Lake Street North Lismore	12.87	9.01	8.91		11.2	12.6
	76 Lake Street North Lismore	11.65	9.22	9.15		11.2	12.6
	78 Lake Street North Lismore	11.58	9.39	9.25		11.2	12.6

Date	Street Address	Floor Level	Gate Level	Road Centre	Description	1in10yr Level	1in100yr Level
	82 Lake Street North Lismore	12.71	9.29	9.34		11.1	12.6
	83 Lake Street - North Lismore	12.04	8.90	8.75	RRHS Old Bld	11.2	12.6
	83 Lake Street- North Lismore	12.95	9.32	9.42	RRHS New MPU	11.2	12.6
	84 Lake Street North Lismore	13.35	9.05	9.32		11.1	12.6
	89 Lake Street North Lismore	12.53	8.06	8.47	/ RRHS East	11.2	12.6
	89 Lake Street North Lismore	12.07	9.35	8.48	/ RRHS	11.2	12.6
	89 Lake Street North Lismore	11.97	8.26	8.52	/ RRHS	11.2	12.6
	89 Lake Street North Lismore	11.90	7.95	8.98	/ RRHS West	11.2	12.6
	101 Lake Street North Lismore	13.15	7.22	8.75		11.1	12.6
	162 Lake Street North Lismore	11.48	8.52	8.45	/ Pump Stn off Currie	11.2	12.6
	172 Lake St North Lismore	11.86	9.33	9.40	/ House cnr Currie	11.2	12.6
	219 Lake Street North Lismore	12.86	12.45	11.54	Lismore Block & Concrete		12.7
	231 Lake Street North Lismore	17.45	16.94	14.99	A. Beckinsale Stone Masons		12.7
	232 Lake Street North Lismore	13.69	12.4	13.29	Bob's Furniture		12.7
	9 Macaulay Street North Lismore	12.53	10.92	11.01	Readymix Brick Office		12.7
	9 Macaulay Street North Lismore	12.21	12	12.53	Readymix		12.7
	17 Macaulay Street North Lismore	11.9	11.88	11.82			12.7
	19 Macaulay Street North Lismore	12.23	12.12	12.55			12.7
	23 Macaulay Street North Lismore	12.94	12.23	12.45	cnr Hallam/Macaulay Sts		12.7
	29 Macaulay Street North Lismore	14.59	13.66	13.31	W.H. Bryant & Sons		12.7
	31 Macaulay Street North Lismore	14.88	14.51	15.14	A.J. Magnay		12.7
	36 Macaulay Street North Lismore	12.61	10.71	11.3		11.4	12.7
	38 Macaulay Street North Lismore	13.79	11.52	11.74			12.7
	44 Macaulay Street North Lismore	13.29	12.05	12.29			12.7
	50 Macaulay Street North Lismore	14.09	12.55	12.72			12.7
	56 Macaulay Street North Lismore	16	14.01	13.93			12.7
	72 Macaulay Street North Lismore	16.98	15.69	15.14			12.7
	74 Macaulay Street North Lismore	18.79	16.52	15.93			12.7
	8 Peate Street North Lismore	12.13	9.88	9.93		11.3	12.6
	10 Peate Street North Lismore	12.30	10.16	10.18		11.3	12.6
	15 Peate Street North Lismore	12.59	9.45	9.72		11.3	12.6
	17 Peate Street North Lismore	12.92	9.90	9.93		11.3	12.6
	19 Peate Street North Lismore	13.44	10.02	10.33		11.3	12.6
	3 Pine Street North Lismore	12.89	10.66	10.54		11.1	12.5
	4 Pine Street North Lismore	12.75	10.88	10.87		11.2	12.5

Date	Street Address	Floor Level	Gate Level	Road Centre	Description	1in10yr Level	1in100yr Level
	5 Pine Street North Lismore	10.86	10.76	10.83		11.1	12.5
	7 Pine Street North Lismore	13.04	10.92	10.84		11.1	12.5
	8 Pine Street North Lismore	12.92	10.87	10.88		11.2	12.5
	9 Pine Street North Lismore	12.77	10.75	10.88		11.1	12.5
	10 Pine Street North Lismore	10.88	10.93	10.88		11.2	12.5
	11 Pine Street North Lismore	11.70	10.93	10.87		11.1	12.5
	12 Pine Street North Lismore	13.02	10.88	1.82	displays 14	11.2	12.5
	13 Pine Street North Lismore	13.01	10.94	10.82		11.1	12.5
	16 Pine Street North Lismore	11.38	10.75	10.76		11.2	12.5
	17 Pine Street North Lismore	13.29	10.90	10.76		11.1	12.5
	21 Pine Street North Lismore	12.86	10.73	10.47		11.1	12.5
	22 Pine Street North Lismore	13.11	10.52	10.47		11.2	12.5
	23 Pine Street North Lismore	10.70	10.55	10.33		11.1	12.5
	24 Pine Street North Lismore	13.23	10.45	10.33		11.2	12.5
	31 Pine Street North Lismore	13.13	8.82	9.03		11.2	12.6
	35 Pine Street North Lismore	10.56	8.40	8.40		11.2	12.6
	59 Pine Street North Lismore	13.12	9.27	9.38		11.2	12.6
	60 Pine Street North Lismore	13.40	8.50	8.78		11.2	12.6
	62 Pine Street North Lismore	13.36	9.15	9.38		11.2	12.6
	64 Pine Street North Lismore	11.86	9.62	9.99		11.2	12.6
	70 Pine Street North Lismore	12.92	9.69	9.69		11.2	12.6
	10 Pitt Lane North Lismore	11.76	7.37	7.27	/ only house	11.1	12.6
	12 Pitt Lane North Lismore	8.81	7.40	7.25	Shed	11.1	12.6
	1 Pitt Street- North Lismore	5.45	4.42	6.59	McKenzie Pk Shed		
	7 Simmons Street North Lismore	13.22	10.49	10.48		11.1	12.5
	8 Simmons Street North Lismore	12.68	10.42	10.48		11.1	12.5
	9 Simmons Street North Lismore	12.65	10.50	10.66		11.1	12.5
	10 Simmons Street North Lismore	13.00	10.63	10.66		11.1	12.5
	11 Simmons Street North Lismore	12.89	10.60	10.78		11.1	12.5
	12 Simmons Street North Lismore	13.03	10.61	10.80		11.1	12.5
	13 Simmons Street North Lismore	12.74	10.61	10.80		11.1	12.5
	14 Simmons Street North Lismore	12.99	10.74	10.85		11.1	12.5
	15 Simmons Street North Lismore	13.52	10.66	10.89		11.1	12.5
	16 Simmons Street North Lismore	13.24	10.72	10.88		11.1	12.5

Date	Street Address	Floor Level	Gate Level	Road Centre	Description	1in10yr Level	1in100yr Level
	17 Simmons Street North Lismore	12.63	10.66	10.89		11.1	12.5
	18 Simmons Street North Lismore	12.96	10.71	10.81		11.1	12.5
	19 Simmons Street North Lismore	12.82	10.74	10.83		11.1	12.5
	22 Simmons Street North Lismore	13.55	10.75	10.83		11.1	12.5
	23 Simmons Street North Lismore	13.34	10.81	10.87		11.1	12.5
	24 Simmons Street North Lismore	13.52	10.89	10.85		11.1	12.5
	25 Simmons Street North Lismore	13.07	10.76	10.88		11.1	12.5
	6 Slater Street North Lismore	12.52	9.49	9.13		11.2	12.6
	8 Slater Street North Lismore	12.85	9.46	9.45		11.2	12.6
	10 Slater Street North Lismore	12.71	9.33	9.51		11.2	12.6
	9 Terania Street North Lismore	11.51	8.80	9.26		11	12.5
	28 Terania Street North Lismore	11.54	10.67	10.85	/ House	11.1	12.5
	28a Terania Street NORTH LISMORE	11.05	10.67	10.85	/ Shop	11.1	12.5
	28b Terania Street NORTH LISMORE	10.83	10.73	10.86	/ Butcher	11.1	12.5
	28b Terania Street NORTH LISMORE	10.81	10.76	10.87	/ Shed	11.1	12.5
	30 Terania Street North Lismore	13.23	10.74	10.88		11.1	12.5
	31 Terania Street North Lismore	11.09	10.75	10.86	Office	11.1	12.5
	31 Terania Street North Lismore	10.75	10.75	10.86	Store/Workshop	11.1	12.5
	32 Terania Street North Lismore	12.86	10.83	10.93		11.1	12.5
	33 Terania Street North Lismore	10.7	10.68	10.88	Winkler & Patrick Electroplaters	11.1	12.5
	35 Terania Street North Lismore	13.04	10.64	10.93		11.1	12.5
	36 Terania Street North Lismore	12.81	10.77	10.92		11.1	12.5
	37 Terania Street North Lismore	13.14	10.76	10.93		11.1	12.5
	38 Terania Street North Lismore	11.76	10.78	10.86		11.1	12.5
	39 Terania Street North Lismore	9.64	8.90	9.25	Max Graham Welding Services	11.1	12.5
	41 Terania Street North Lismore	12.73	10.62	10.92		11.1	12.5
	42 Terania Street North Lismore	13.02	10.82	10.82		11.1	12.5
	43 Terania Street North Lismore	12.64	10.52	10.86		11.1	12.5
	45 Terania Street North Lismore	12.73	10.49	10.82		11.1	12.5
	45 Terania Street North Lismore	12.73	10.44	10.80		11.1	12.5
	46 Terania Street North Lismore	13.12	10.78	10.80	Terania Laundry	11.1	12.5
	49 Terania Street North Lismore	10.52	10.52	10.81	Kleenheat Gas	11.1	12.5
	49 Terania Street North Lismore	13.91	10.45	10.62		11.1	12.5
	50 Terania Street North Lismore	10.86	10.65	10.62		11.1	12.5
	50 Terania Street North Lismore	10.68	10.62	10.62	Rainbow Wholefoods	11.1	12.5

Date	Street Address	Floor Level	Gate Level	Road Centre	Description	1in10yr Level	1in100yr Level
	50 Terania Street North Lismore	10.68	10.58	10.56	/ Shop	11.1	12.5
	50 Terania Street North Lismore	11.66	10.98	10.54		11.1	12.5
	50 Terania Street North Lismore	12.23	10.88	10.54		11.1	12.6
	53 Terania Street North Lismore	10.32	10.35	10.76	J&J's Used Cars	11.1	12.6
	53 Terania Street North Lismore	10.37	10.37	10.54		11.1	12.6
	53 Terania Street North Lismore	10.20	10.20	10.46		11.1	12.6
	54 Terania Street North Lismore	10.69	10.52	10.52		11.1	12.5
	57 Terania Street North Lismore	12.64	9.99	10.37		11.1	12.6
	60 Terania Street North Lismore	10.76	10.45	10.46		11.1	12.5
	61 Terania Street North Lismore	12.94	9.90	10.35		11.1	12.6
	64 Terania Street North Lismore	12.27	10.33	10.35		11.1	12.5
	65 Terania Street North Lismore	12.24	9.86	10.31		11.2	12.6
	71 Terania Street North Lismore	9.88	9.86	10.20	Lismore Freighters	11.2	12.6
	73 Terania Street North Lismore	11.56	9.75	10.09		11.2	12.6
	77 Terania Street North Lismore	11.73	9.47	9.94		11.2	12.6
	78 Terania Street North Lismore	10.30	10.09	10.19	Liberty Petrol	11.2	12.6
	80 Terania Street North Lismore	11.92	9.98	9.94		11.2	12.6
	82 Terania Street North Lismore	13.30	9.74	9.75		11.2	12.6
	84 Terania Street North Lismore	12.95	9.65	9.38		11.2	12.6
	86 Terania Street North Lismore	12.00	9.20	9.24		11.2	12.6
	90 Terania Street North Lismore	12.35	8.78	8.82		11.2	12.6
	94 Terania Street North Lismore	12.67	8.86	9.18		11.3	12.6
	96 Terania Street North Lismore	13.04	9.19	9.38	New House	11.3	12.6
	98 Terania Street North Lismore	12.05	11.16	11.57	Brick Hall	11.3	12.5
	99 Terania Street North Lismore	12.92	9.7	9.91		11.3	12.6
	101 Terania Street North Lismore	13.36	10.04	10.22		11.3	12.6
	103 Terania Street North Lismore	12.85	10.33	10.43		11.3	12.6
	105 Terania Street North Lismore	13.09	10.62	10.71		11.4	12.6
	109 Terania Street North Lismore	13.34	10.91	11.09		11.4	12.6
	110 Terania Street North Lismore	13.17	10.67	11.03		11.3	12.6
	111 Terania Street North Lismore	11.19	11.07	11.47	Service Station/Store	11.4	12.6
	112 Terania Street North Lismore	12.38	11.51	11.62		11.4	12.6
	113 Terania Street North Lismore	11.79	11.11	11.57		11.4	12.6
	117 Terania Street North Lismore	12.21	11.26	11.62	Guard Dog	11.4	12.6
	118 Terania Street North Lismore	13.08	11.64	11.65		11.4	12.5

Date	Street Address	Floor Level	Gate Level	Road Centre	Description	1in10yr Level	1in100yr Level
	120 Terania Street North Lismore	13.17	11.8	11.68		11.4	12.5
	123 Terania Street North Lismore	12.47	11.39	11.61		11.4	12.6
	124 Terania Street North Lismore	14.17	11.51	11.68		11.4	12.5
	125 Tweed Street North Lismore	9.97	9.84	10.25		11.2	12.6
	127 Terania Street North Lismore	14.25	11.34	11.54		11.4	12.6
	138 Terania Street North Lismore	13.29	10.57	11.09		11.4	12.5
	140 Terania Street North Lismore	13.36	9.87	10.95		11.4	12.5
	142 Terania Street North Lismore	13.38	10.23	10.8		11.4	12.5
	146 Terania Street North Lismore	13.31	10.02	10.44		11.4	12.6
	150 Terania Street North Lismore	11.22	9.7	10.3	Motor Mechanic Shed	11.4	12.6
	192 Terania Street North Lismore	12.38	10.3	10.38		11.6	12.7
	194 Terania Street North Lismore	13.43	10.6	10.57		11.6	12.7
	196 Terania Street North Lismore	13.9	10.78	10.93		11.6	12.7
	199 Terania Street North Lismore	16.64	13.8	13.36		11.6	12.8
	8 Tweed Street North Lismore	14.33	11.65	11.55		11.3	12.5
	14 Tweed Street North Lismore	13.88	11.67	11.59		11.3	12.5
	16 Tweed Street North Lismore	12.05	11.54	11.57		11.3	12.5
	18 Tweed Street North Lismore	13.61	11.48	11.51		11.3	12.5
	20 Tweed Street North Lismore	14.53	11.34	11.46		11.3	12.5
	22 Tweed Street North Lismore	11.75	11.39	11.47	Timber Sales Office	11.3	12.5
	25 Tweed Street North Lismore	13.36	11.48	11.26		11.3	12.5
	26 Tweed Street North Lismore	12.01	11.06	11.04	Industrial Spares	11.4	12.6
	26 Tweed Street North Lismore	12.05	11.06	11.04	Doc Dorahy Tractors	11.4	12.6
	28 Tweed Street North Lismore	12.71	10.56	10.81		11.4	12.6
	32 Tweed Street North Lismore	10.21	10.11	10.48	Budget Furniture Restoration	11.4	12.6
	33 Tweed Street North Lismore	11.36	11.07	11.5		11.3	12.5
	33 Tweed Street North Lismore	11.38	11.07	11.51	Brick Hall	11.3	12.5
	36 Tweed Street North Lismore	9.8	9.7	10.17	Summit Joinery	11.4	12.6
	36 Tweed Street North Lismore	9.726	9.7	10.17	Glass Supplies/Kitchen Specialists	11.4	12.6
	49 Tweed Street North Lismore	13.28	10.51	11.04		11.4	12.6
	51 Tweed Street North Lismore	13.5	10.54	10.92		11.4	12.6
	55 Tweed Street North Lismore	12.47	10.41	10.81		11.4	12.6
	59 Tweed Street North Lismore	13.09	10.36	10.69		11.4	12.6
	61 Tweed Street North Lismore	13.1	10.14	10.56		11.4	12.6
	63 Tweed Street North Lismore	12.08	10.02	10.36		11.4	12.6

Date	Street Address	Floor Level	Gate Level	Road Centre	Description	1in10yr Level	1in100yr Level
	65 Tweed Street North Lismore	12.96	9.83	10.17		11.4	12.6
	67 Tweed Street North Lismore	12.1	9.69	10.09		11.4	12.6
	75 Tweed Street North Lismore	11.77	9.49	9.97		11.4	12.6
	81 Tweed Street North Lismore	13.11	8.93	9.78		11.4	12.6
	89 Tweed Street North Lismore	13.12	8.38	9.7		11.4	12.6
	123 Tweed Street North Lismore	9.94	10	10.24	Saleyards Office	11.2	12.6
	127 Tweed Street North Lismore	10.13	10	10.52	Tweed Street Canteen	11.2	12.6
	125 Tweed Street North Lismore	12.23	9.98	10.47	127 on letterbox	11.2	12.6
	4 Winterton Parade North Lismore	11.46	8.29	8.85		11.2	12.6
	4a Winterton Parade North Lismore	11.38	8.50	8.67		11.2	12.6
	5 Winterton Parade North Lismore	11.73	8.47	8.56		11.2	12.6
	6 Winterton Parade North Lismore	11.52	8.27	8.47		11.2	12.6
	11 Winterton Parade North Lismore	11.42	8.25	8.47		11.2	12.6
	12 Winterton Parade North Lismore	9.57	7.33	7.62		11.2	12.6
	31 Winterton Parade North Lismore	8.38	8.04	8.11		11.2	12.7
	33 Winterton Parade North Lismore	13.38	7.85	7.97		11.2	12.7
	9a Woodlawn Road NORTH LISMORE	8.00	7.00	7.00	Lismore Turf Club	11.30	12.80
	4 Wotherspoon Street North Lismore	13.29	8.63	8.64		11	12.4
	5 Wotherspoon Street North Lismore	13.21	8.48	8.47		11	12.5
	6 Wotherspoon Street North Lismore	12.37	8.71	8.76		11	12.5
	7 Wotherspoon Street North Lismore	10.17	8.63	8.54		11	12.5
	7 Wotherspoon Street North Lismore	12.90	8.63	8.54		11	12.5
	9 Wotherspoon Street North Lismore	10.32	8.68	8.64		11	12.5
	10 Wotherspoon Street North Lismore	11.39	8.82	8.86		11	12.4
	12 Wotherspoon Street North Lismore	12.73	8.76	8.84		11	12.4
	13 Wotherspoon Street North Lismore	11.90	8.86	8.86		11	12.4
	15 Wotherspoon Street North Lismore	11.60	8.91	8.87		11	12.4
	17 Wotherspoon Street North Lismore	13.39	8.86	8.87		11	12.4