

# Book the Catchment Model

The Richmond and Brunswick Catchment Model is available free for community groups, schools and educational events. It is suitable for curriculum or educational outcomes aimed at demonstrating:

- What is a catchment?
- What are local catchment management issues?
- How do our daily practices have an effect on the land, water and native plants and animals?
- What choices can we make, or actions can we take, for a healthy catchment?

*The Model will be brought to your site and operated by a trained Council Officer or Educator. A teacher must supervise school groups.*

## To book the Model contact:

### Ballina Shire Council

Reception: ..... (02) 6686 4444

### Byron Shire Council

Catherine Knight..... (02) 6626 7000

### Kyogle Council

Graham Kennett ..... (02) 6632 1611

### Lismore City Council

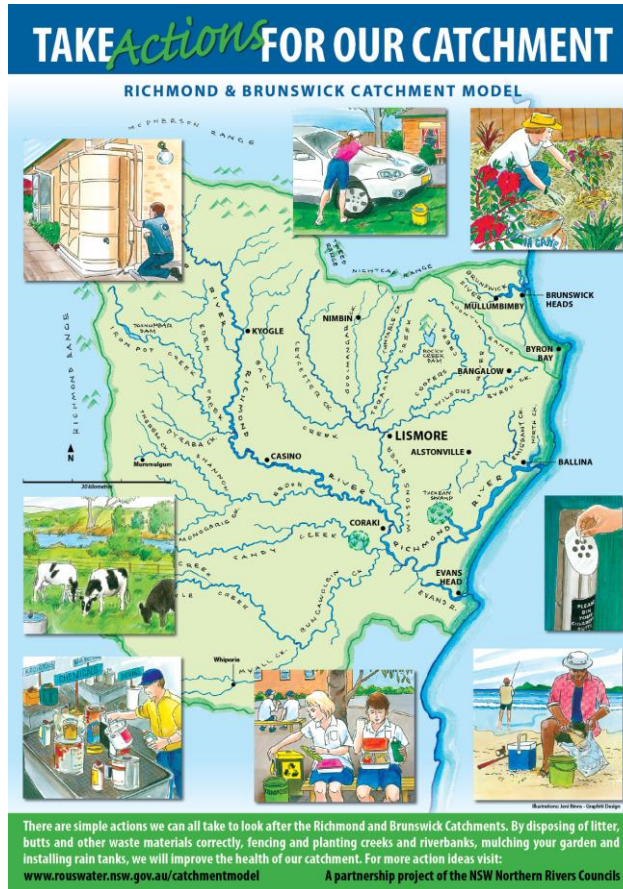
Vanessa Tallon..... (02) 6625 0572

### Richmond Valley Council

Strategic Planning ..... (02) 6660 0300

### Rous Water and Richmond River County Council

Rous Water Reception..... (02) 6623 3800



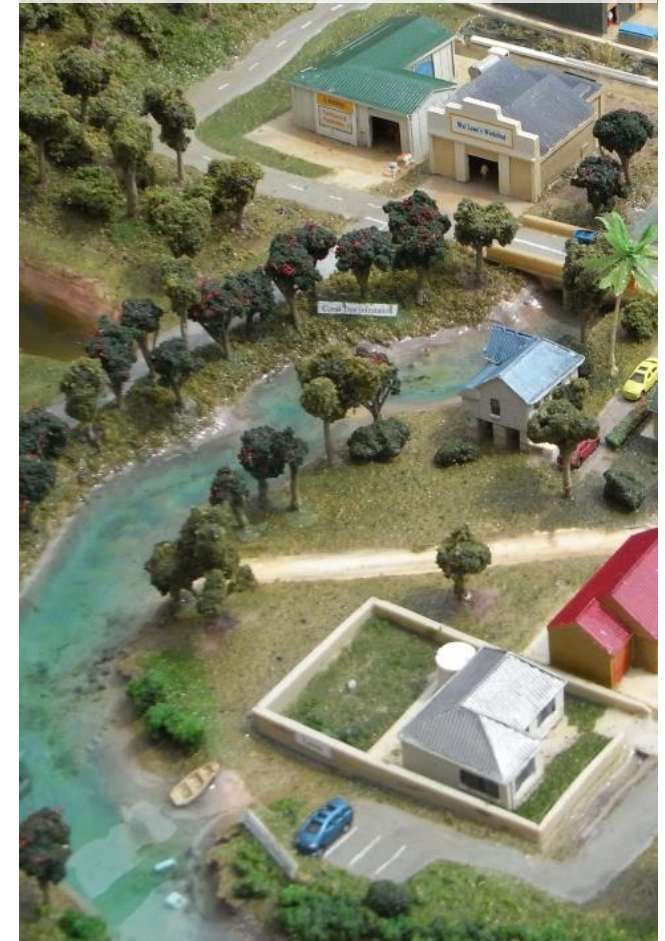
## For information and catchment education:

[www.rouswater.nsw.gov.au/catchmentmodel](http://www.rouswater.nsw.gov.au/catchmentmodel)

- Catchment map magnifier
- Catchment poster and actions
- Catchment champions
- Catchment curriculum notes
- Website games and links; and
- What people learnt from the Catchment Model.

## Richmond and Brunswick Catchment Model

*An interactive way to build understanding and inspire actions for a healthy catchment.*



A joint initiative of these NSW Northern Rivers Councils



# Learn from the Richmond and Brunswick Catchment Model

The model is a scaled down version of where we live, work and play. It has a flowing river, water supply dam, town, farms, beach and more. Through demonstrations and with audience help, it is a captivating tool to develop an appreciation of how everything in the environment is interconnected and to identify ways we can change our behavior to create a healthy, alive and living catchment. Some of the issues and actions communicated by the Catchment Model are:



1

Estuary ecosystems



2

Environmental management practices for industry



3

Water supply and management



4

Stormwater, wastewater and greywater



5

Riparian vegetation



6

Building site stormwater management



7

Acid sulphate soil management



8

Environmental weeds



9

Marine and terrestrial national parks



10

School environmental management plans



11

Flood levees



12

Groundwater

