



NiMBin

PLACE PLAN

November 2024



Acknowledgement of Country

Our team acknowledges the Widjabul Wia-bal people of the Bundjalung nation, the traditional custodians of the land, water and skies on which the Nimbin Place Plan project stands. We pay our respects to their elders, past, present and emerging and acknowledge the important role Aboriginal and Torres Strait Islander people play within the design, arts and placemaking community.

We celebrate the practice of First Nations design and systems management that have occurred on these lands for tens of thousands of years.

Publication details

Acknowledgements: Lismore City Council extends its gratitude to Fourfold Studio and Vee Design for their invaluable contribution to the preparation of the Nimbin Place Plan. Council would also like to express its appreciation to all contributors and stakeholders involved in the development of this report. Their expertise and dedication have shaped the strategies, initiatives, and detailed planning elements of this document

Disclaimer: The information presented in this document is based on available data at the time of writing. All figures and diagrams are intended to be indicative and should be treated as such. While Lismore City Council and their consultants have exercised reasonable care in the creation of this document, it does not warrant or represent its accuracy or completeness. Lismore City Council and its officers assume no responsibility for any loss or damage incurred by individuals who act or refrain from acting based on the information contained herein.



Table of Contents

1.0 Introduction and background	1	3.0 Place actions	14
1.1 Project description	2	3.1 Place vision, values and drivers	15
1.2 What is a place plan?	2	3.2 Place actions	16
1.3 Context of Nimbin	3	3.3 Priority projects	17
1.4 Shape, activate, manage	7	3.4 Shape actions	27
2.0 Engagement process	9	3.5 Activate actions	32
2.1 Who did we speak to?	10	3.6 Manage actions	35
2.2 What did we hear online?	11	4.0 Implementation	38
2.3 What did we hear through face-to-face engagement?	13	4.1 Recommendations for implementation	39



Section 1.0

Introduction and background



1.1 Project description

Nimbin village is located in the far north-east of New South Wales, approximately 30 km north of Lismore, and is captured within the Lismore City Council Local Government Area. Nimbin's strong legacy of locally-led action and spirit of volunteerism has enabled the village to acquire a reputation of sustainability, strong community values and alternative living Australia-wide.

As a part of Lismore City Council's commitment to developing the region, a place plan for Nimbin and its immediate surrounds has been developed. A place plan captures community ideas and aspirations for the future and organises these inputs into a roadmap for the future use, activation and development within the village.



1.2 What is a place plan?

A place plan captures community ideas and aspirations for the future of Nimbin and uses them to create a roadmap for the future use, activation and development of spaces. This includes a series of short, medium, and long-term actions that can be implemented by stakeholders at all levels.

The development of the place plan was determined to be the optimal strategy for Nimbin as it recognises and seeks to perpetuate the existing high level of volunteerism and community ownership over the village. This route foregrounds locally-led placemaking, where people at all levels are enabled and empowered to contribute to the creation and activation of places they love and feel connected to.



1.3 Context of Nimbin

Nestled in the heart of the picturesque Northern Rivers Region of New South Wales, Nimbin is a village unlike any other in Australia. Known for its vibrant and eclectic community, rich cultural heritage, and stunning natural landscapes, Nimbin embodies a spirit of alternative living and sustainable practices that sets it apart from the typical Australian town. The Nimbin Place Plan seeks to capture the essence of Nimbin, outlining a vision for its future that honours its past, embraces its present, and plans for a resilient and thriving tomorrow.

CHARACTER

Nimbin's character is vividly expressed through its colourful streetscapes, artistic murals, and community-centric ethos. The village is a canvas of creativity, where every building tells a story, and every corner invites discovery. The main street is lined with vibrant shopfronts, local businesses, and community spaces that reflect the diverse interests and passions of its residents. From artisanal shops and cafes to 7 Sibley Street – Nimbin's Sustainability Hub and art galleries, Nimbin is a place where creativity and sustainability flourish hand in hand.

HISTORICAL SIGNIFICANCE

Nimbin sits on Bundjalung Country and is the traditional home of the Widjabul Wia-bal people, whose rich cultural heritage and deep connection to the land are integral to the village's identity. Nimbin's contemporary history was forever changed in 1973 when it hosted the Aquarius Festival, a landmark event that attracted thousands of people seeking an alternative lifestyle rooted in communal living, environmental consciousness, and creative expression. The festival's legacy is still palpable today, as Nimbin remains a beacon for those drawn to its unique blend of counterculture and community spirit.

CULTURAL HERITAGE

Nimbin's cultural heritage is a tapestry woven from the threads of its Indigenous roots, countercultural history, and ongoing commitment to sustainability and social justice. Bundjalung cultural practices, stories, and stewardship of the land provide a profound foundation for the village's identity. The first official Welcome to Country in Australia occurred at the 1973 Aquarius festival. This heritage is celebrated and preserved through various community initiatives, educational programs, and cultural events that honour Indigenous traditions and promote a deeper understanding of the land's significance.

The Aquarius Festival of 1973 was a turning point that brought a wave of new residents to Nimbin, many of whom were artists, musicians, and environmentalists. This influx of creative energy transformed the village into a hub of artistic and cultural activity. Today, Nimbin hosts numerous festivals, markets, and community events that celebrate its vibrant culture, including the annual Nimbin MardiGrass, which advocates for cannabis law reform, and the Nimbin Roots Festival, which showcases music and arts.

NATURAL BEAUTY AND ENVIRONMENTAL COMMITMENT

Surrounded by the lush rainforests and rolling hills of the Northern Rivers region, Nimbin is a gateway to several World Heritage-listed national parks, including Nightcap National Park, Mount Jerusalem National Park, Border Ranges National Park, Lamington National Park, and Wollumbin National Park. These parks are celebrated for their breathtaking landscapes, diverse ecosystems, and opportunities for outdoor recreation and environmental education. The subtropical climate of the region supports a rich biodiversity, making Nimbin an ideal destination for nature lovers and eco-tourists.

Nimbin's commitment to environmental sustainability is evident in its community initiatives and daily practices. The village is home to numerous sustainable living projects, including permaculture farms and renewable energy installations. Residents are deeply engaged in conservation efforts, working to protect the region's natural habitats and promote sustainable land use. This environmental stewardship is a core aspect of Nimbin's identity and a key driver of its vision for the future.

A THRIVING COMMUNITY

The strength of Nimbin lies in its close-knit and inclusive community. Despite its small size, with a population of around 2400 residents, Nimbin boasts a dynamic and engaged citizenry that actively participates in local governance, volunteerism, and social initiatives. This sense of community is reinforced by the village's many communal spaces, such as the Nimbin Community Centre, which hosts a variety of programs and services that support the well-being of residents and foster social cohesion.

Nimbin's community is characterised by its diversity and inclusivity. People from all walks of life are drawn to the village's welcoming atmosphere and shared values of sustainability, creativity, and social justice. This diversity enriches the community, bringing a wide range of perspectives and skills that contribute to Nimbin's vibrant and resilient social fabric.

CHALLENGES AND OPPORTUNITIES

Like any community, Nimbin faces its share of challenges. The village must balance the pressures of tourism with the needs of its residents, ensuring that growth and development do not compromise its unique character or environmental integrity. Climate change and severe weather events, such as floods and bushfires, pose significant risks that require proactive planning and adaptation strategies.

Economic resilience is another key challenge. While tourism is a major economic driver, there is a need to diversify the local economy to reduce reliance on this volatile sector. Encouraging the growth of green industries, creative enterprises, and sustainable agriculture can provide new opportunities for economic development and job creation.

Housing affordability and diversity is also a pressing issue, particularly as Nimbin's popularity continues to rise and the desire to age in place. Ensuring that residents have access to suitable and affordable housing options is essential for maintaining the village's inclusivity and quality of life.

RELEVANCE WITHIN THE AUSTRALIAN LANDSCAPE

Nimbin's significance extends beyond its local context. As a pioneering community in the fields of alternative living and sustainability, Nimbin serves as a model for other communities across Australia and around the world. The village's innovative approaches to environmental conservation, community engagement, and cultural celebration offer valuable lessons for those seeking to create more sustainable and inclusive places.

Nimbin's cultural heritage and historical significance also contribute to its relevance within the broader Australian landscape. The village's role in the countercultural movement of the 1970s, and its ongoing advocacy for social and environmental justice, highlight its importance as a site of cultural and political significance.



A VISION FOR THE FUTURE

The Nimbin Place Plan outlines a vision for the village's future that honours its rich history, vibrant culture, and deep connection to the natural environment. The Plan aims to ensure that Nimbin remains a welcoming, thriving and resilient community that continues to inspire and attract people from near and far by enhancing and activating its public spaces and ensuring that Nimbin remains a vibrant and sustainable village for generations to come.

QUICK STATS

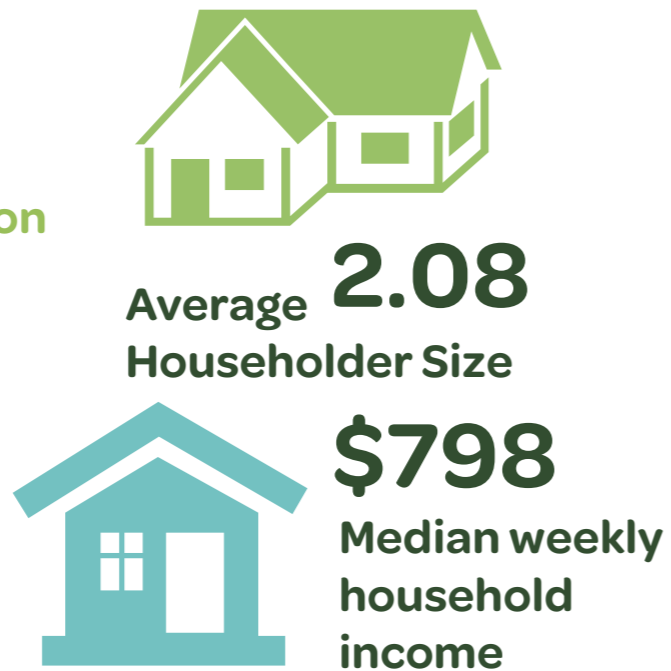
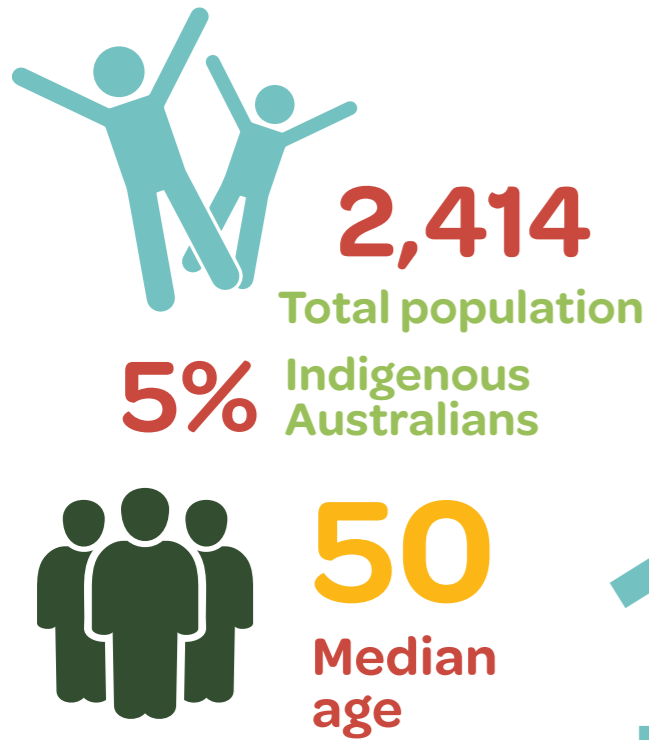


Figure 1. Nimbin ABS (2021) demographic statistics

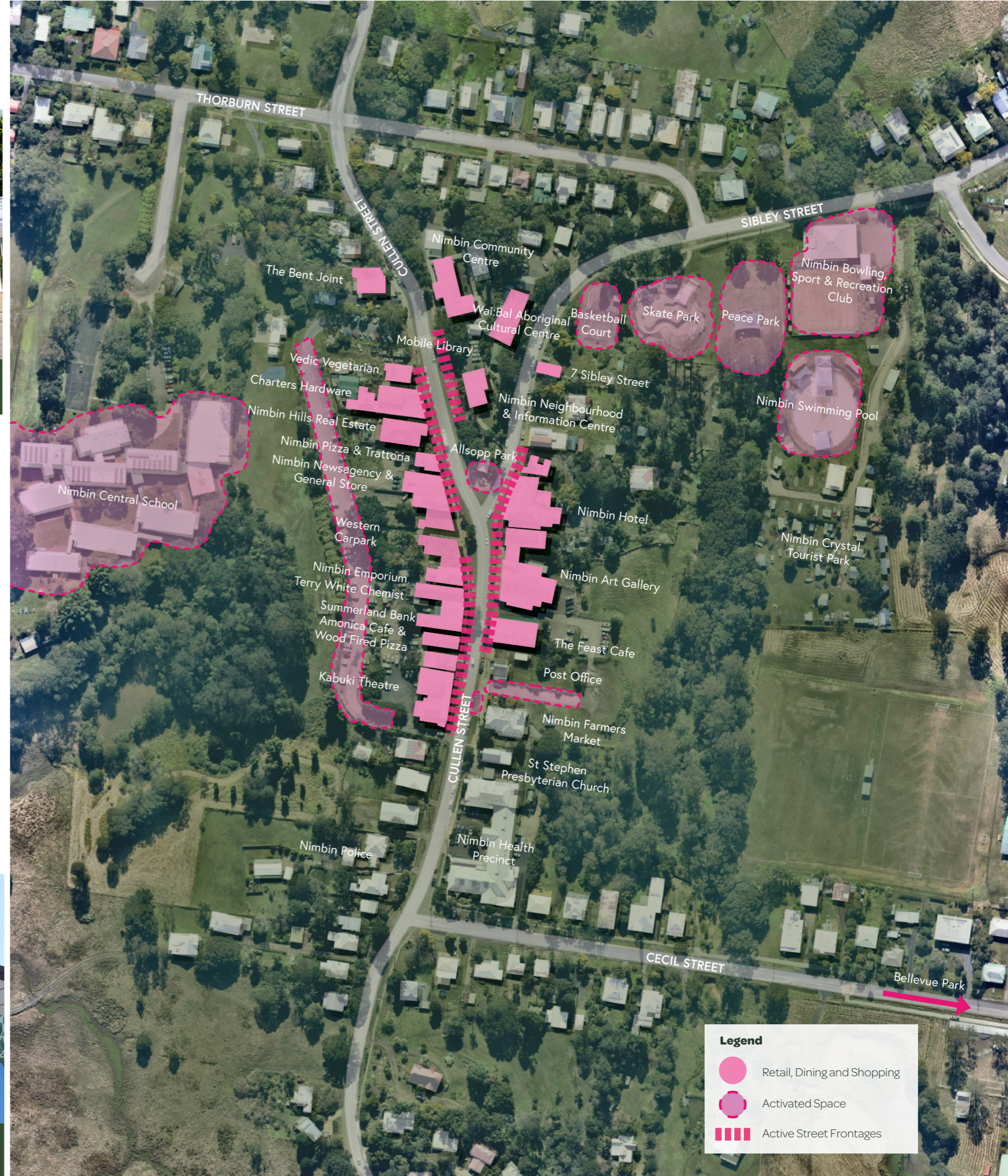


Figure 2. Key Nimbin destinations

1.4 Shape, activate, manage

When thinking about successful places, a person's experience is enhanced when the physical infrastructure is considered in partnership with the activity that is happening in that space. Furthermore, considering how these places and activities are governed, sets them up for long-term sustainability. This is how we see the creation of active, vibrant places that are loved and utilised by locals and visitors alike.

To ensure this outcome is achieved in Nimbin, proposed actions have been categorised by 'Shape', 'Activate' or 'Manage'.

SHAPE

PLACE HARDWARE • PHYSICAL INFRASTRUCTURE • ACCESS • MOVEMENT • COMFORT • IDENTITY

Fundamentally all successful urban centres, towns, main streets and public places offer a good first impression. They feel comfortable, clean, and give the impression of safety, vitality, and community pride. They are easy to understand and have a level of intuitive legibility embedded into their design. People are encouraged to get around on foot and walk up and down the streets.

Public spaces offer a variety of places for people to sit and gather, in a range of group sizes. People feel comfortable when the place is full of people or just with a small handful. Streets offer edges that promote activation and interest, rather than blank walls or empty blocks. Accessible towns have high parking turnover, but are not dominated by vehicles, cars feel second to the pedestrian.

ACTIVATE

PLACE SOFTWARE • USE • ACTIVITY • SOCIABILITY • INTERACTION • VIBRANCY

The activities that occur in a space are what makes them memorable as great public places. They offer the experiences that create the reasons to visit our towns in the first place and are why we want to return. When people see friends, run into their neighbours and feel comfortable interacting with strangers, they tend to feel a stronger sense of place and attachment to their community.

In successful places, activity is driven by locals that are collectively invested in their place. This is evident to visitors and further strengthens a place's identity. This reflection of community pride helps drive economic prosperity. Main streets with a variety of activities and uses attract people, foster social interaction, and become the cultural, social, and economic heart of our regional towns.

MANAGE

PLACE SUSTAINABILITY • CURATE • GOVERN • CAPACITY • ENABLE

After establishing the foundations of a great town, the challenge is to continue this momentum through community-action. The ongoing sustainable success of a town (social, cultural, economic, and environmental) comes down to building locals' capacity to curate, activate and manage their public places and main streets.

Often public perception is that Council is responsible for the ongoing success of local centres rather than being the enabling body that supports the local businesses, community and stakeholders in this role. When everyone plays their role, Council's investment sees a far greater return. The models and systems for building the skills of local community and stakeholders to manage and activate their public places does not always come easily and often requires significant guidance and support to get started; but it is worth the effort.

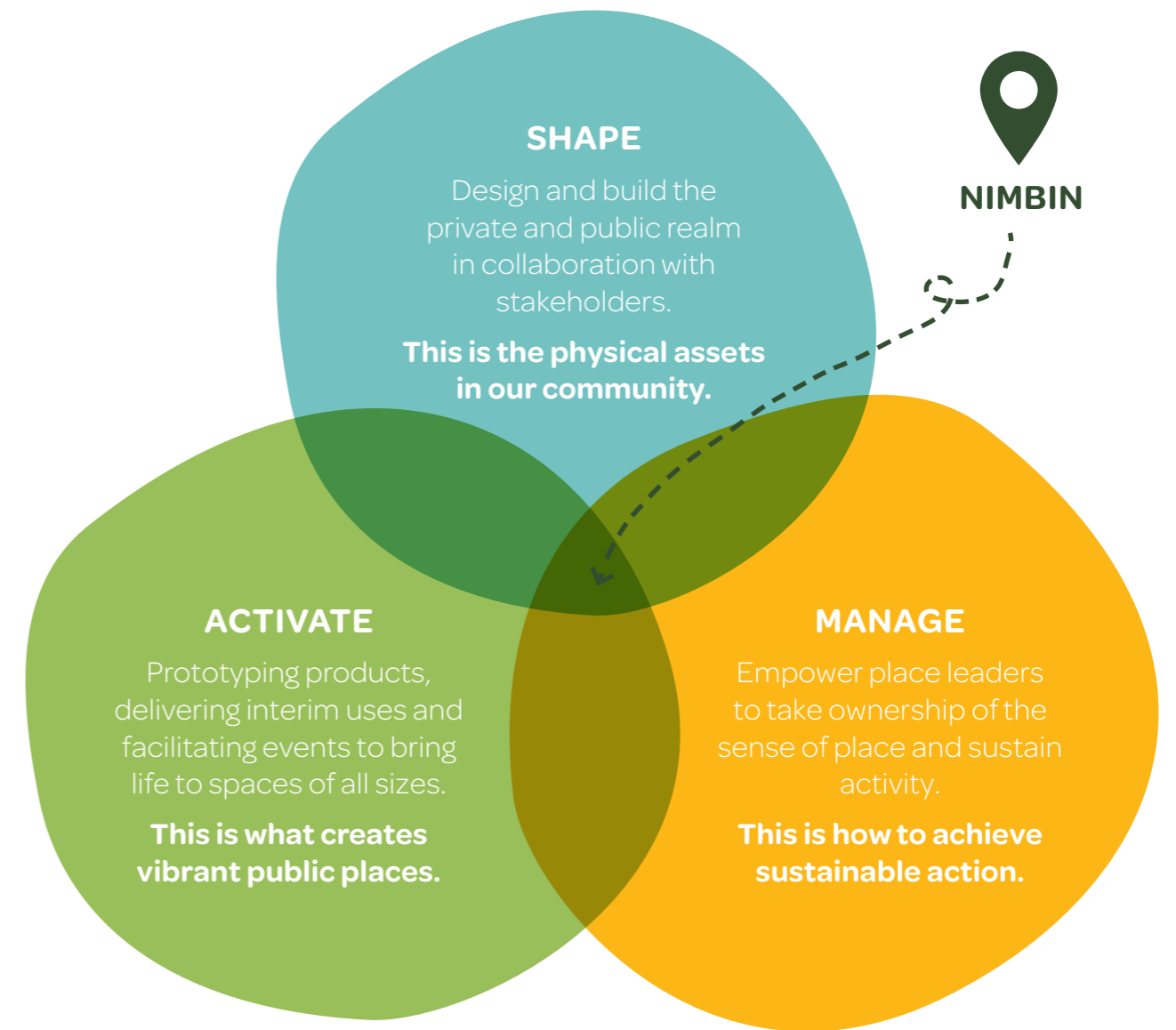
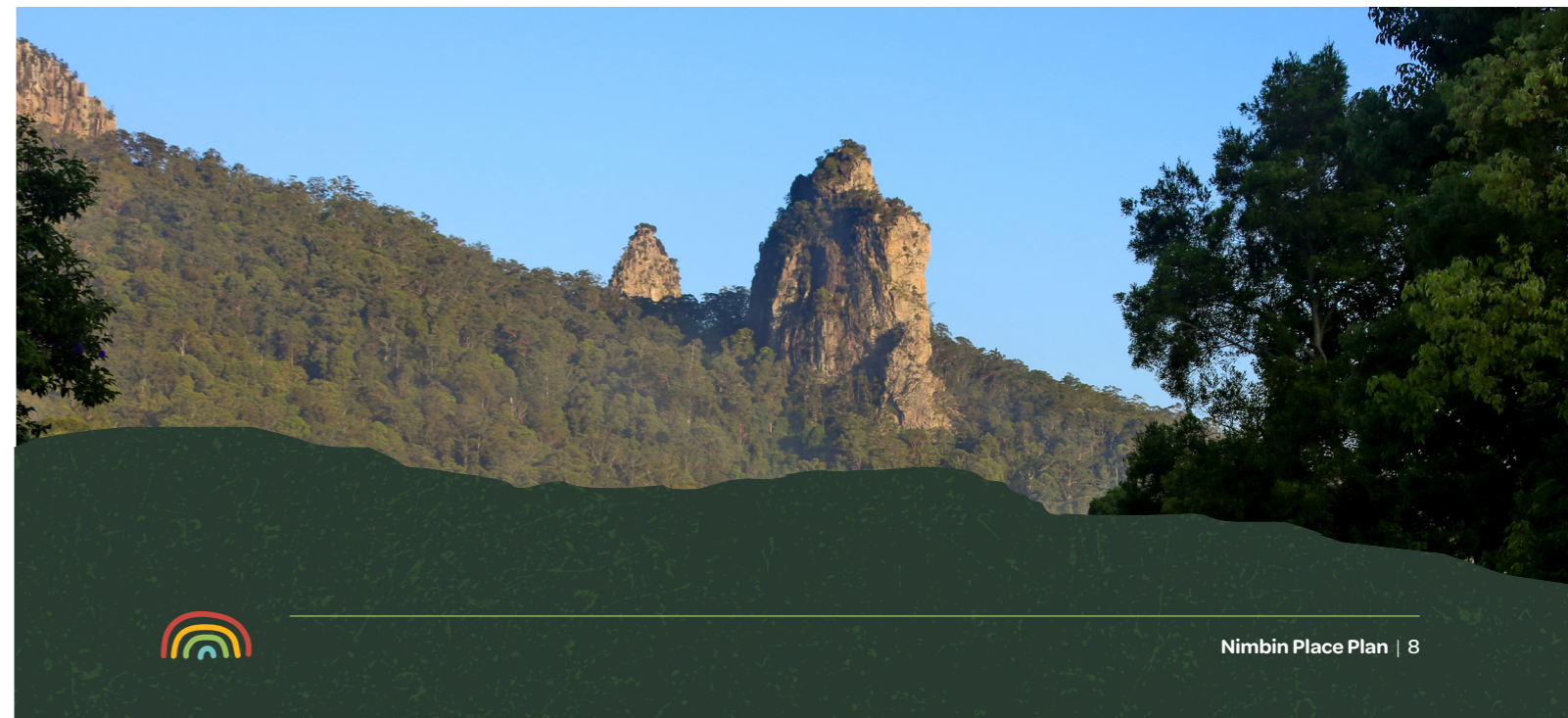


Figure 3. Shape, activate and manage diagram



Section 2.0

Engagement process



2.1 Who did we speak to?

Various engagement activities and tools were delivered throughout this project to capture the diverse perspectives of the Nimbin community. Successfully discovering the wants, needs and insights of the local community was essential to creating a place plan that truly reflects Nimbin and continues the ongoing legacy of locally-led placemaking and community-driven action.

The community and stakeholders gave their feedback via various engagement methods, as summarised here.

To fully capture the broad and diverse views of the Nimbin community, engagement activities involved the following stakeholders:

- Lismore City Council Councillors.
- Lismore City Council officers.
- Local businesses.
- Local young people via Nimbin Central School.
- Nimbin Advisory Group.
- Nimbin Chamber of Commerce.
- Nimbin Neighbourhood Centre.
- Nimbin Community Centre.
- The broader community, including those who live, work and play in Nimbin.

1x Online 'Your Say' Survey
WITH **181** RESPONSES
600+ engagements with survey page

2x Community Engagement Workshops
ATTENDEES:
30 - Workshop #1
28 - Workshop #2

1x
Workshop + site visit with Council Staff

Targeted discussions with key stakeholders

1x
Council Workshop with the Nimbin Chamber of Commerce

1x
School Workshop WITH 30+ STUDENTS

COMMON ADJECTIVES USED BY THE COMMUNITY TO DESCRIBE NIMBIN

neighbourhood, green, local, unique, strong, lots, environmental, street, culture, colourful, music, old, eccentric, centre, sustainability, market, holistic, alternative, lot, assets, history, school, hemp, media, diversity, acceptance, town, spirit, diverse, lifestyles, owned, murals, first, environment, embassy, tolerance, ownership, kids, activism, footprint, social, tennis, preschool, light, parks, group, beyond, park, festival, arts, real, sustainable, energy, family, people, supporting, tourism, aquarius, colour, spirit, tolerance, kids

Project launch + trader postcard drop



2.2 What did we hear online?

THE MOST LOVED ASPECTS OF NIMBIN

There was a diversity of reasons why respondents visit the Nimbin village, with the predominating five reasons being:

- I live here.
- I eat here e.g. local cafes and restaurants.
- I do my shopping here e.g. grocery and retail.
- I work here.
- I visit medical services.

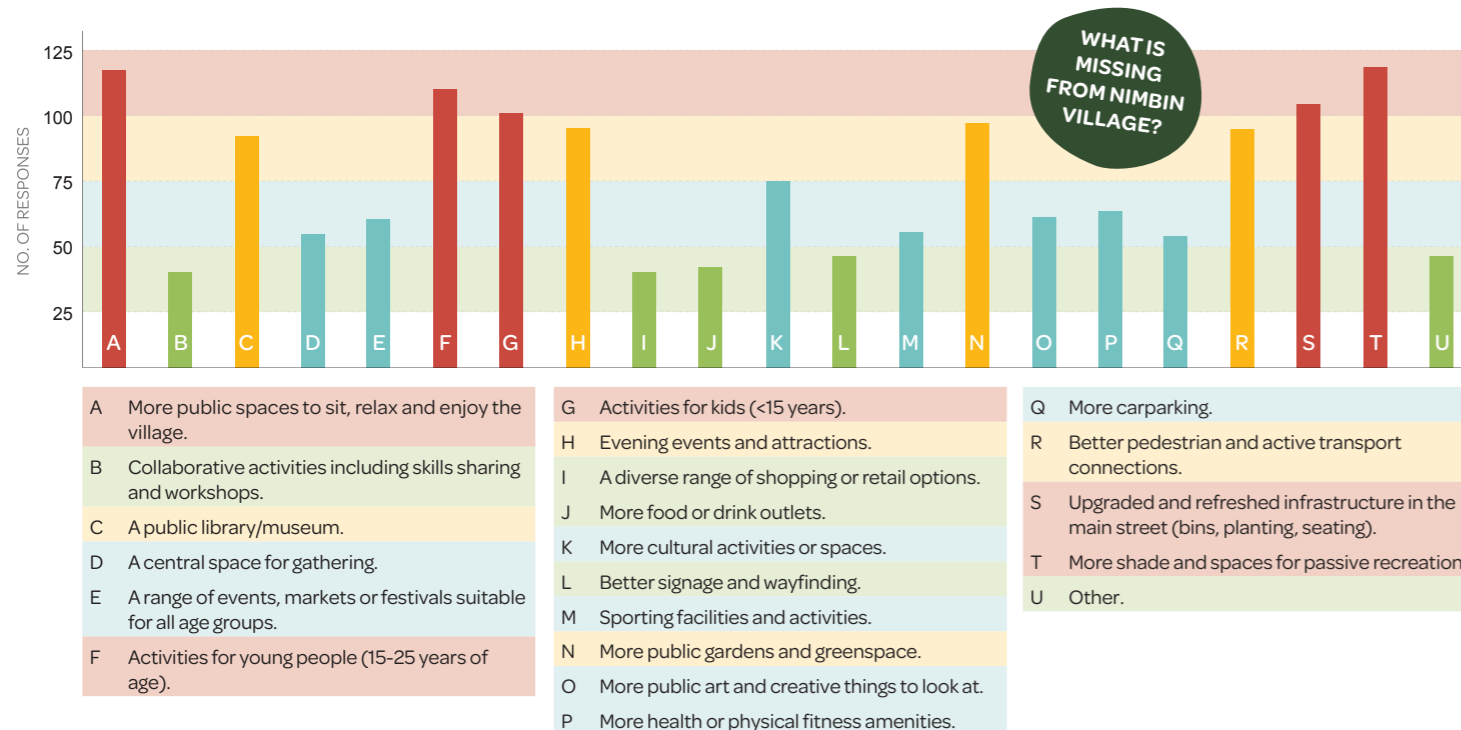
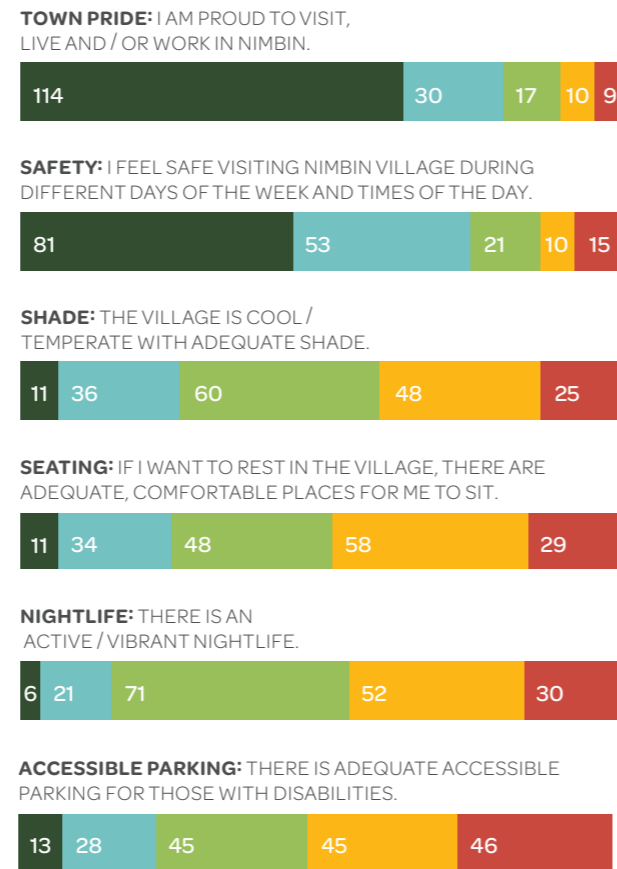
Questions were asked in a variety of formats, where respondents were asked to rate aspects of Nimbin on a five-point scale. There are some clear responses for 'most loved aspects of Nimbin' (which scored predominantly over four stars); as well as some clear findings around aspects of Nimbin that require the most improvement (being those predominantly rated two stars or below).

IMPROVEMENTS

Respondents also identified the improvements that would provide the greatest benefit to the Nimbin village. The red bars indicate the elements most identified as missing in Nimbin.

MOST LOVED

MOST IMPROVEMENT NEEDED

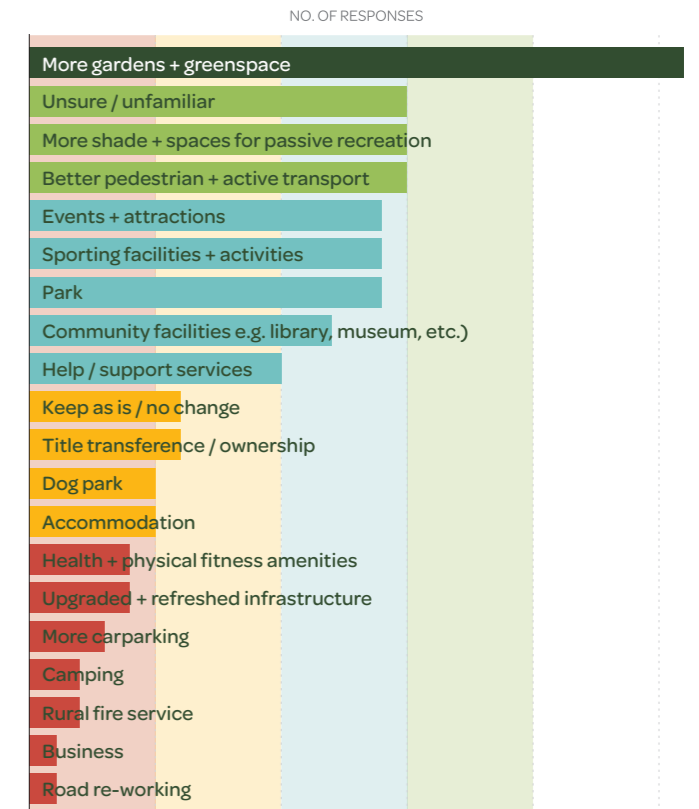
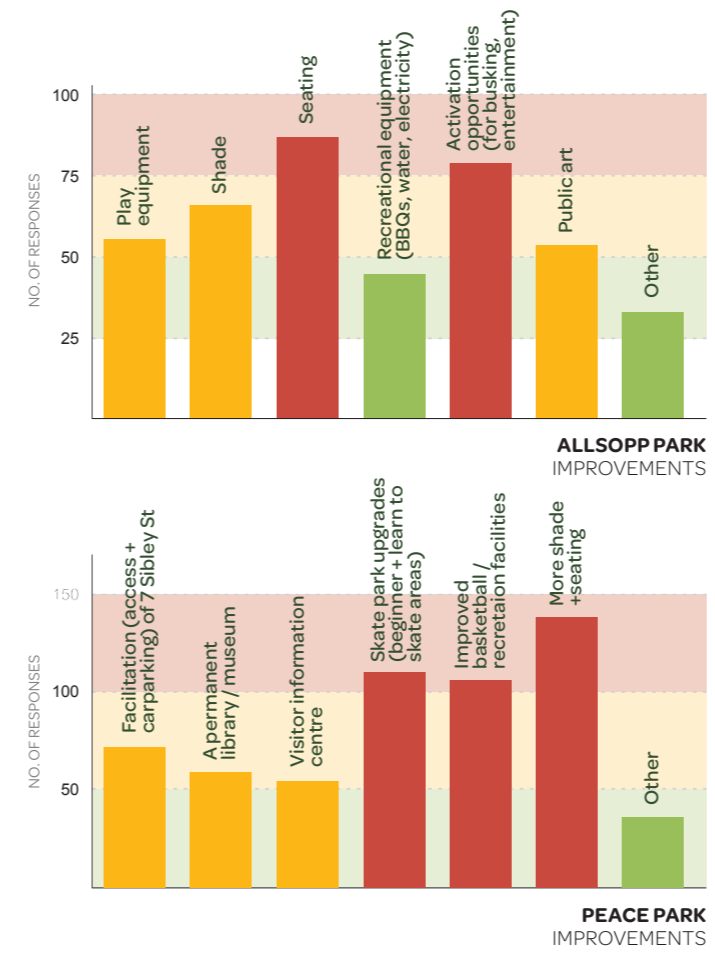


COUNCIL OWNED SITE IMPROVEMENTS

Nimbin village contains five sites owned by Lismore City Council: Allsopp Park, Peace Park, Nimbin Swimming Pool Caravan Park, the Western Carpark and Bellevue Park.

Given Council will be a significant contributor to the delivery of the Place Plan, we wanted to ask the community about the current and future use of these sites. Each site was given a rating on a five-point scale and key improvements to incorporate into the Place Plan were captured (with the exception of Bellevue Park which was not given a numeric rating due to lack of awareness and usage of the park by the community).

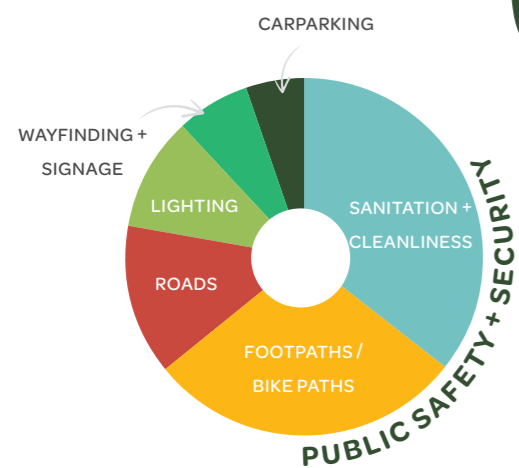
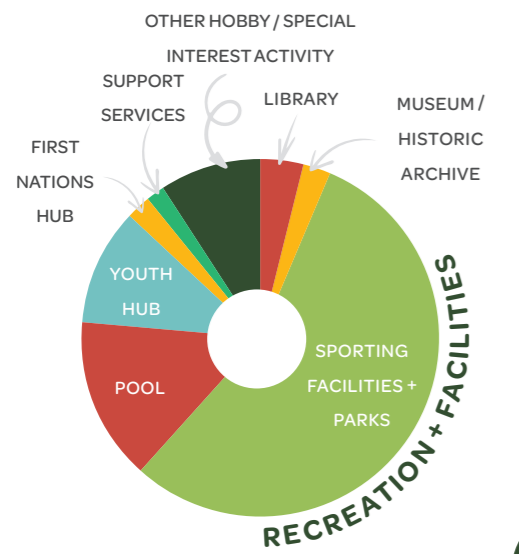
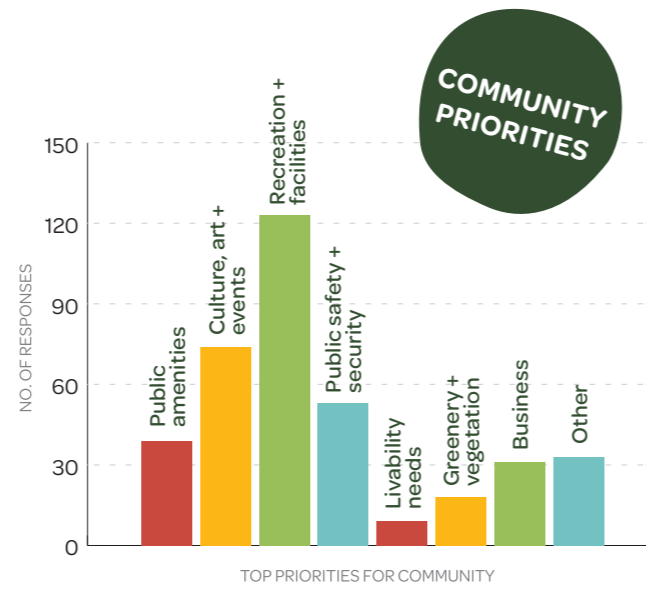
The red bars represent elements that the community has indicated are most in need of improvement.



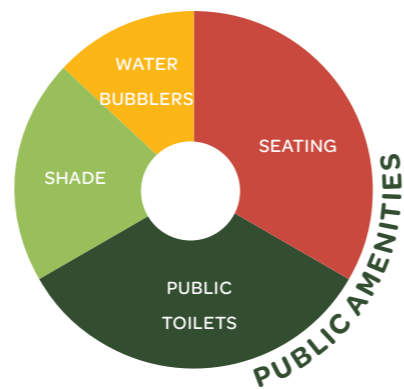
2.3 What did we hear through face-to-face engagement?

COMMUNITY PRIORITIES

The community voiced a clear need for more activities, resources, and youth spaces to adequately support hobby interests, and friendly interactions. It was evident that the youth of the Nimbin village sought safe and engaging 'third places' which are areas to socialise outside of their two main places; school and home.



TOP PRIORITIES BREAKDOWN



Section 3.0

Place actions



3.1 Place vision, values and drivers

To ensure actions proposed are representative of the unique identity and characteristics of the Nimbin community and township, engagement was undertaken via a 'defining Nimbin workshop' that informed the vision, place values and place drivers for the village. Insights gathered through this session were also complemented with outcomes from the online survey. These were developed to underpin the actions throughout this document, and as such each action indicates the theme (the value and driver) it addresses.

Uniquely Nimbin					
Vision	Nimbin's ethos is grounded in a deep respect for Bundjalung Country and a commitment to community spirit, sustainable living, cultural creativity and inclusivity, fostering a vibrant, welcoming environment for all to learn, grow and connect.				
Values	Interconnected spirit	A legacy of caring, advocacy + learning	Harmonious + sustainable living	Cultural creativity + artistic expression	A welcoming place for all
	The Heartbeat of Nimbin's "community ecosystem" is underpinned by a deeply interconnected, cooperative spirit, where every resident is embraced as a local, contributing to a supportive, diverse and welcoming environment. This collective ethos, powered by volunteers, fosters intergenerational connections and community-driven projects, ensuring the well-being of all. It's this unique blend of acceptance and active participation that prepares Nimbin to meet future challenges together.	Nimbin's legacy of caring, advocacy, and learning embodies a deep respect for Bundjalung Country and Indigenous heritage, alongside a devoted commitment to social, legal, and environmental causes. This place value celebrates and shares local history, fostering a community deeply connected to place and driven by a desire for progressive change, cultural understanding, and reconciliation, honouring our past to inform a conscientious future.	Nimbin fosters harmonious and sustainable alternative living, blending environmental stewardship, organic farming, and renewable practices with a holistic approach to health and wellness. This model respects the local environment and Bundjalung Country, addressing affordable housing and supporting an ageing population. As a sanctuary for alternative living, Nimbin's self-sustaining economy thrives on wellness, local sustainable values, and a deep connection to nature, attracting those seeking a connected, meaningful lifestyle.	Nimbin's "cultural creativity and artistic expression" is a vivid and vibrant celebration of diversity, showcasing colourful, quirky creativity through a diverse mix of cultural activities and events. This activated arts scene, which leaves a memorable first impression, champions local talent and innovation, providing a platform for diverse voices and embodying the community's spirit of cultural and creative expression.	Nimbin's "a welcoming place for all" is characterised by comfortable, safe, welcoming, and well-maintained public spaces, shady streets, and accessible public amenities. Supported by well-connected footpaths and cycle networks offering equitable access for all ages. All facilitated through the collaborative efforts of Community and Council.
Drivers	Community cohesion + participation	Heritage + advocacy empowerment	Sustainability + wellbeing integration	Creative + cultural flourishing	Inclusive accessibility + interaction
	Enhancing Nimbin's interconnected community spirit by fostering cooperative ventures and volunteer-driven initiatives. This driver promotes an inclusive, supportive environment where every resident's contribution is valued, facilitating intergenerational connections and community well-being, and preparing Nimbin to collectively face future challenges.	Strengthening Nimbin's foundation of caring, advocacy, and learning through continuous respect and celebration of Bundjalung Country and Indigenous heritage. This driver fosters a community engaged in social, legal and environmental activism, ensuring a legacy that informs future generations and promotes progressive change and cultural reconciliation.	Advancing Nimbin's commitment to harmonious and sustainable living by integrating environmental stewardship with holistic wellness. Encouraging organic farming, renewable energy practices, and sustainable housing solutions, this driver aims to nurture a self-sustaining economy and a lifestyle deeply connected to nature, addressing the needs of an ageing population.	Amplifying Nimbin's cultural creativity and artistic expression by providing platforms for diverse cultural activities and events. This driver seeks to celebrate and showcase local talent and innovation, enriching Nimbin's vibrant arts scene and leaving a lasting impression on both residents and visitors, fostering a community where cultural creativity thrives.	Ensuring Nimbin remains a welcoming place for all by enhancing public spaces, accessibility, and safety. This driver focuses on creating comfortable, inclusive, and well-maintained environments, supported by well-connected pathways and collaborative community and council efforts, promoting equitable access and engagement for individuals of all ages and abilities.
Action	01 Enhanced Connectivity for Community Cohesion.	02 Heritage and Advocacy Integration	03 Sustainable Community Living Framework	04 Creative and Cultural Expression Platforms	05 Inclusive Public Realm Design

3.2 Place actions

The revitalisation of Nimbin will require action at all levels, from Council to local businesses and the community. A key cornerstone of the Place Plan is that the unique identity and character of Nimbin is retained and showcased through collaborative actions. Actions provide practical ways to bring the vision for Nimbin to fruition.

Each action has been placed under a category of 'Shape', 'Activate' or 'Manage'. A detailed description of these categories and their relevance to creating vibrant places has been described in Section 1.4.

The actions have been framed as being different levels of priority with varying associated costs and descriptions of different potential partners. This helps to provide easy ways of identifying projects that suit different budgets, timeframes and capabilities for those seeking to execute them.

CHAMPIONS

Different champions have been nominated for each action, chosen depending upon the context of the project, and a number of other factors such as ability to deliver, ability to meet timeframes, etc. These champions indicate responsibility and/or involvement in the action delivery.

COST

Budgets have been aligned with the following ballpark costings, for refinement through further investigation.

\$ = <\$10,000
 \$\$ = \$10,000-\$100,000
 \$\$\$ = \$100,000+

TIMING

Approximate implementation timeframes have been nominated as follows:

Short = 0-2 years
 Medium = 3-5 years
 Long = 6+ years

THEMES

The themes are derived from the Place Values and Place Drivers, as outlined in the previous section. In summary, the themes meet the following action objectives:

1. Enhanced connectivity for community cohesion
2. Heritage and advocacy integration
3. Sustainable community living framework
4. Creative and cultural expression platforms
5. Inclusive public realm design





3.3 Priority Project: Allsopp Park

The community's vision for Allsopp Park is to revitalise it as the vibrant green heart of Nimbin Village, transforming it into a central hub away from the bustling main street. Proposed enhancements aim to improve the park's accessibility, safety, and aesthetic appeal. Key improvements suggested during community consultations include adding more seating, increasing shade with additional greenery, and creating varied spaces for both structured and casual activities. The plans highlight the importance of enhancing connectivity and access throughout the park, with a focus on equitable usage. Incorporating Crime Prevention Through Environmental Design (CPTED) principles is a priority to ensure safety.

Further development plans involve transforming Allsopp Park into a dynamic area that engages both locals and visitors. This includes integrating pop-up workshop spaces within a central stage for performances and activation. The proposal also involves enriching the park's cultural and visual appeal through public art, especially by engaging local youth, building on existing art installations. The project is championed by the Council, Friends of Allsopp Park, and the wider community, who are all dedicated to these transformative enhancements.

LEGEND

01 Community Common

- Flexible central flat turf area for the multi-purpose use by community
- Variety of seating opportunities to the edges of the space
- Opportunity for public amenities including water bubblers and drink bottle re-fill taps
- This would include the removal of the existing playground

02 Entry Plaza

- Memorial plaza space to be widened to allow for views and access into Allsopp Park
- Improve pedestrian connection into the park via the entry plaza from adjacent streets
- New pavement offers opportunity for art inlays and inscriptions within the new ground surfacing

03 Entry Arbour

- Retain the existing "Rain Shelter" and enhance with additional "Rain Arbour" to welcome pedestrians into Allsopp Park. Remove the existing picnic table and provide new picnic tables throughout the park
- Improved visibility offering a greater feeling of welcoming and safety
- Install new pavement and retain the existing 'Imagine' pavement art as an arrival feature, celebrating the existing mosaic artwork.

04 Seating Terraces

- Seating height curved terracing using local stone to make better use of the slope
- Seating providing informal and formal seating for events
- Steps between terrace offer permeable access along the length of Cullen Street

05 Embankment Terraces

- Terracing along Sibley Street using local stone offer a visual feature to the steep interface to Allsopp Park
- Steps between terrace offer permeable access along the length of Sibley Street

06 Existing Mural and Event Hardstand

- Retain and celebrate the existing mural
- Provide hardstand area for bump-in stage to the front of the mural
- Adjacent lawn area offers spill out space for workshops or community events

07 Streetscape Arbour

- New recycled timber arbour structure with flowering vines offer shade and identity

08 Public Art

- Retain the existing sculpture opening up visibility and presence on the space
- Integration of local art throughout the space

09 Equitable Access

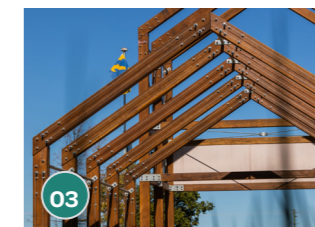
- Incorporate equitable access options to enter the park, without compromising the functional and aesthetic design of the spaces

10 Existing Trees

- Where appropriate retain existing trees, pruning branches and removing mid-story planting to improve visibility into the park

11 Retain Existing BBQ

- Existing BBQ and shelter to be retained and enhanced



3.3 Priority Project: Peace Park

The revised plan for Peace Park retains the existing configuration of the park whilst increasing vehicular access by providing a new access road connecting to 7 Sibley Street. This option would require further detailed design investigation. This connection will allow for an expansion of the services offered at 7 Sibley, as well as offering some parking on the site. It is proposed the access road would be designed in a way that ensures it is pedestrian friendly, ensuring visitor safety and encouraging movement over and throughout the park. This could include creative opportunities such as road murals and painting with bollards at the entrance to prevent entry when not required.

This revised design provides opportunities for both active and passive recreation including the enhancement of the existing basketball court, skate park and playground area, all within the existing locations. Additionally, an activation plaza is proposed adjacent to the basketball half-court, that could host small-scale bump-in events and activations.

LEGEND

01 Skate Park

- Retain and enhance the existing skate park and function through facility upgrades
- Provide improved circulation surrounding and integration of small adjacent seating spaces

02 Primary Circulation Path

- Nominal 2.5 metre wide shared cycle and pedestrian path
- Direct access from the village centre through Peace Park to the Rainbow Walk along the edge of the bowls club
- Path will double as a circuit for learn to ride

03 Amenities Building

- Approximate proposed location of the new amenities building to service Peace Park and the existing public swimming pool

04 Basketball Half Court

- A new basketball half court that would accommodate a variety of sporting activities
- New retaining wall and terrace seating

05 Activation Plaza

- A multi-purpose plaza space to support bump-in events and activations.

06 Access Road

- The addition of an access road connecting to 7 Sibley Street
- Additional parallel parking including potential permeable surfacing
- Bollards in place for occasional road access

07 Picnic Shelters

- The provision of new picnic shelters with tables and barbecues to facilitate community use

08 Secondary Paths Network

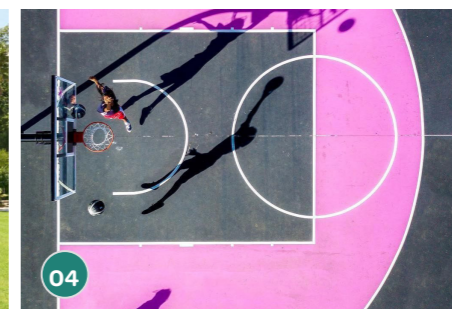
- A network of secondary pedestrian and cycle paths to define various spaces within the park and offer circuit for learn to ride and scooter

09 Open Lawn Area

- Flexible flat open lawn area for general community use or larger community events

10 Playground

- A new proposed adventure and nature based playground





3.3 Priority Project: Nimbin Main Street Revitalisation

The revitalisation of Nimbin’s Main Street is a community-driven initiative designed to enhance the street’s appeal and functionality, aligning with local desires for a more vibrant, green, and accessible space. A series of improvements have been outlined, focusing on increasing greenery, shade, seating, and visual interest through colour and art. This plan, endorsed by the Council, local businesses, and the Chamber of Commerce, proposes a multi-phase approach to transform Main Street into a welcoming and engaging environment for both locals and visitors.

IMMEDIATE ENHANCEMENTS

Initial efforts will focus on quick wins to quickly boost the street’s atmosphere and usability:

- **Greening Initiatives:** Installation of self-watering planters and hanging baskets filled with colourful, productive plants along the street.
- **Seating and Shade:** Placement of new seating areas shaded by temporary structures to provide immediate comfort.
- **Pedestrian Safety:** Implementation of traffic calming measures and enhancements to pedestrian crossings to ensure safety and promote walkability.

LEGEND

01 Seating ‘Blister’

- Build out of kerb to create space for outdoor dining or seating nook
- Low level planting and new street trees to offer shade and greenery

02 Kerb Build-out at Allsopp Park

- Realign kerb to offer more space for pedestrian and low height planting
- Build-outs to facilitate better pedestrian circulation
- Realign intersection to reduce road pavement and increase greenery

03 Seating Area

- Provide opening in existing stone wall to facilitate new pedestrian crossing point
- Improve pavement and planting to this existing area to promote outdoor seating

04 Pedestrian Crossings / Shared Zone

- Realign kerb lines to facilitate improved pedestrian circulation across Cullen Street and Sibley Street
- Alternative option would be to create a shared zone

05 Planting ‘Blister’

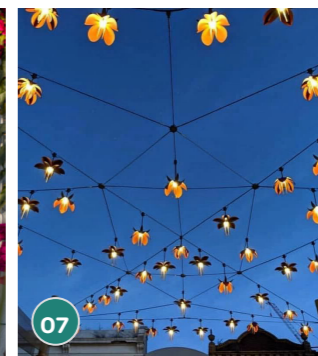
- Build out of kerb to create space for low level planting and new street trees to offer shade and greenery

06 Road Pavement Treatment

- Street pavement painting to roadway to add life and vibrancy and mark the heart of the village
- Aid in reducing traffic speeds and facilitating the safe movement of pedestrians

07 Catenary Lighting

- Installation of catenary wire system across the street to accommodate feature lighting and possible art installations





LONG-TERM STRATEGIES

Following the initial enhancements, the project will shift towards more sustainable and permanent solutions:

- **Street Furniture and Arbours:** Introduction of durable street furniture and vine-covered arbours, creating natural shade and seating.
- **Integrated Street Art:** Commissioning local artists to create murals and sculptures that reflect Nimbin’s creative spirit and cultural stories.
- **Infrastructure Improvements:** Overhaul of the ‘blister’ sections of the footpaths to improve aesthetics and functionality, adding new seating and planting areas.

ADDITIONAL FACILITIES AND AMENITIES

To further enrich the Main Street experience, the following facilities will be introduced:

- **Outdoor Dining and Retail Spaces:** Enabling local cafes and shops to expand onto the sidewalks, fostering a lively street scene.
- **Enhanced Pedestrian Infrastructure:** Broadening sidewalks and improving signage to facilitate easier navigation and accessibility.
- **Nighttime Economy:** Installation of catenary lighting to enhance evening ambiance and support nighttime business activities.
- **Community and Cultural Spaces:** Designating areas for public performances and gatherings, including the installation of public information kiosks and water bubblers.
- **Sustainable Mobility:** Adding bike racks to encourage cycling and support sustainable transportation options.

LEGEND

- 08 Street Tree Planting**
 - Within existing verges, new build-outs or existing planters, maximise opportunities to provide additional street trees to enhance the greening of the street
- 09 Vertical Art Markers**
 - Simple vertical timber poles painted and decorated by the local community offer a cost effective opportunity to establish a welcoming gateway into the village
- 10 Streetscape Arbour**
 - New recycled timber arbour structure with flowering vines offer shade and identity along the street
- 11 Relocate Pedestrian Crossing**
 - Decommission existing pedestrian crossing and refurbish buildouts to improve planting and paved seating areas
 - Install new pedestrian crossing slightly south, with new pavement, paint, kerb buildouts and planting
 - Catenary lighting to enhance the crossing
- 12 Planted Verges**
 - Simple planting of existing verges with new groundcover planting to improve the visual appearance of the street and promote green





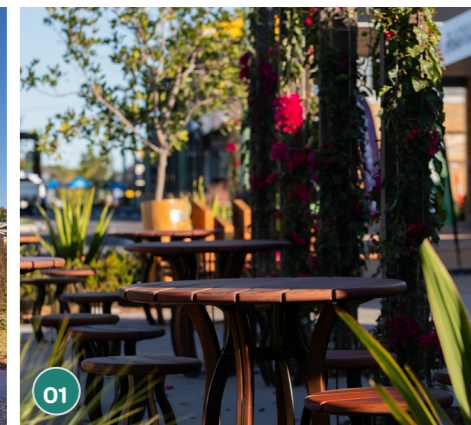
TECHNOLOGY AND ACCESSIBILITY

To accommodate the growing needs of residents and visitors, Nimbin Main Street will also feature:

- **Public Wi-Fi:** Offering free Internet access to enhance connectivity.
- **Accessible Public Amenities:** Ensuring clean and accessible restroom facilities are available to the public.

A UNIFIED COMMUNITY VISION

The proposed revitalisation of Nimbin Main Street is a comprehensive effort to enhance the area's functionality, aesthetic appeal, and cultural significance. This initiative aims to create a vibrant and inclusive street that meets the needs of the community while promoting sustainable practices and local values. Through thoughtful planning and community collaboration, Main Street will become a cornerstone of Nimbin's identity and daily life.



3.4 Shape actions

‘Shape’ actions help with the design and build of physical infrastructure and attributes. Shape actions include projects that enhance: access, movement, comfort and identity. In some cases, these include ‘Council Owned Asset’ actions, which describe actions related to the five main public amenity Council assets (being Allsopp Park, Bellevue Park, Swimming Pool and Caravan park, Peace Park, and the Main Street).

#	Action name / description	Champion	Timing	Cost	Themes					
					1	2	3	4	5	
4	<p>CYCLEWAYS AND PATH CONNECTIONS</p> <p>There is a need for greater connectivity and walkability within Nimbin village through the creation of more cycleways, paths and walking tracks around town. It is proposed that an active transport study is undertaken as a 2-kilometre catchment from the village centre.</p> <p>Cycleway and pedestrian pathway locations could consider footpath, signage and lighting upgrades in high traffic areas within the village including Cullen Street, Sibley Street and Cecil Street and connections to the Rainbow Walk. Specific examples include connecting Cullen Street and Peace Park to the Rainbow Walk, widening the existing path on Thorburn Street from Cullen Street to the high school, a connection to the industrial precinct from Thorburn/ Sibley Street and providing an alternate way to the school. As footpaths and cycleways are developed within the centre of the village a wider view could be considered with walking tracks developed to connect to the surrounding landmarks and nodes to enhance connectivity and access for locals and visitors.</p>	<p>Council</p> <p>State Gov.</p> <p>Developers</p> <p>Grants</p>	<p>Medium</p> <p>- Long</p>	<p>\$\$\$</p>						
5	<p>SUSTAINABLE NIMBIN COMMUNITY PLAN</p> <p>The community in Nimbin are highly supportive of community hubs that demonstrate sustainable living practices, including organic gardening, renewable energy solutions, and water conservation. Local organisations including the Nimbin Neighbourhood and Information Centre have developed their own action plans including the Sustainable Nimbin Community Plan. It is proposed Council explore opportunities to work collaboratively with these organisations to understand how together they can amplify the achievement of sustainable outcomes for the community.</p>	<p>Community</p> <p>Business</p> <p>Council</p>	<p>Medium</p> <p>- Long</p>	<p>\$</p>						

#	Action name / description	Champion	Timing	Cost	Themes					
					1	2	3	4	5	
6	<p>IMPROVING THE WESTERN CAR PARK</p> <p>Community has highlighted the need to expand and enhance the Western Car Park as well as the connecting pathway and stairs to improve the aesthetics, accessibility and safety of the site. Expanding the amount of car parking spaces as well as providing more accessible parking for use by people of all abilities is critical.</p> <p>Ideas include the acquisition of a small part of the school for car park expansion on the southern side. The experience of walking along the stairs and pathways from the car park to Cullen Street could be improved through the addition of creative lighting and artwork, with specific emphasis on improved evening experience. Additionally, exploration could be made into improving the aesthetics of the back of the shops including connections of the heritage facades through from Cullen Street. Public art could provide visual experiences and wayfinding to draw people towards the centre of the village. Wayfinding and signage installations in this area could also aid with navigation, especially for tourists and visitors.</p>	<p>Educ. Dept.</p> <p>Council</p> <p>Nimbin Central School</p> <p>Chamber of Commerce</p>	<p>Short - Long</p>	<p>\$\$</p>						
7	<p>ACCESSIBILITY UPGRADES</p> <p>There is a need to undertake infrastructure maintenance and upgrades to improve accessibility in public spaces within the village, where viable, noting Nimbin’s gradient constraints. Accessibility improvements include ramps, tactile paving, and accessible public transport options where the State Government can be involved. Specific examples include improvements from Allsopp Park to Sibley Street to Peace Park. It is proposed Council works internally to ensure the main street and public areas of Nimbin are maintained to a high standard.</p>	<p>Council</p> <p>State Gov</p> <p>Community</p>	<p>Short - Medium</p>	<p>\$\$\$</p>						
8	<p>IMPROVEMENTS TO PUBLIC TOILET IN TOWN</p> <p>There is a keen interest from the Nimbin community to see an increase in the supply and quality of public toilets in Nimbin. It is proposed the public toilets within the Community Centre precinct are refurbished to improve their quality for the whole community.</p> <p>It was also requested that a second set of toilets should be made available in close proximity to the village centre including in Peace Park. This action has also been captured in the Peace Park priority project.</p>	<p>Council</p>	<p>Short</p>	<p>\$\$\$</p>						



#	Action name / description	Champion	Timing	Cost	Themes				
					1	2	3	4	5
9	<p>SIGNAGE AND WAYFINDING STRATEGY</p> <p>There is currently an array of signage and wayfinding throughout the village, however it lacks cohesion and strong links to the Nimbin identity. It is proposed a rationalisation of signage throughout town occurs, including identification of key destinations and connections that should be included through signage.</p> <p>There is an opportunity to partner with the community to create waypoint signage and markers that could help create unique opportunities for local collaboration and storytelling. Involving First Nations groups, older residents and local artists could help uncover unique local narratives to be included in design elements.</p> <p>Bi-lingual signage featuring English and Widjabul Wia-bal place names would help to show the history of Nimbin and the surrounding area and promote education and inclusion.</p> <p>There is also an opportunity to update the audio-storytelling trail in town to better reflect the more contemporary identity of Nimbin including showcasing some of the sustainability and community initiatives the township is leading.</p>	Council Businesses Community	Short	\$-\$\$\$					
10	<p>LIGHTING THE TOWN</p> <p>Providing more lighting experiences around town would not only help to improve safety at night but also add to the colour and vibrancy around town. Partnering with artists to create light installations could enhance public art and help activate Nimbin's nightlife. More unique lighting options such as fairy lights, lanterns, lighting trees and unique light features or fittings would suit the town's atmosphere and create a point of difference with an attraction for visitors in the evening.</p>	Community Council Chamber of Commerce Businesses	Short	\$					
11	<p>LOCALLY-LED MAIN STREET GREENING AND PLANTING</p> <p>It was expressed through engagement that the community were eager to see more green, shade, seating and colour on the streets of Nimbin. It is proposed that a multi-phase approach is adopted to achieve this desired outcome. Suggestions raised included the installation of more self-watering planters and hanging baskets in town, especially along the main street. Contents could include colourful flowers and productive plants. Shade and seating would help activate the street and provide rest areas for locals and tourists.</p>	Chamber of Commerce Businesses Council	Short	\$\$					

#	Action name / description	Champion	Timing	Cost	Themes				
					1	2	3	4	5
12	<p>RE-IMAGINE THE FIRE SITE</p> <p>The 'fire site' is an important site in a strategically important location in town. It is proposed that Council continue to engage with landowners to ensure beneficial economic opportunities and outcomes are achieved that align with the Nimbin character and aesthetic.</p>	Community Council Businesses	Medium - Long	NA					
13	<p>EV CHARGING STATION</p> <p>As a tourist destination, the need for electric vehicle charging is going to be an issue for Nimbin in the near future as there is currently nothing publicly available. It is proposed Council investigates the opportunity for implementing EV charging stations at key locations within the village. Not only would this asset be an economic driver for the township, it aligns closely with Nimbin's environmentally conscious culture.</p>	Council	Short - Medium	\$\$\$					
14	<p>POOL AND CARAVAN PARK (COUNCIL OWNED ASSET) UPGRADES</p> <p>Suggestions for upgrades to the pool and caravan park area include increasing greenery, shade and seating, increasing recreational amenities and a water play area for children with a safe section for young children and toddlers.</p>	Council	Medium - Long	\$\$\$					
15	<p>EXTENSION OF RAINBOW WALK AND POLLINATOR PROJECT</p> <p>Extending the popular Rainbow Walk works by adding planting and greenery to create a pollinator trail. Additionally, it is proposed that additional phases of the project are explored including additional extensions and connections including to Cullen Street and the future Alternative Way extension.</p>	Community Council	Medium	\$\$\$					
16	<p>ENTRY/EXIT GATEWAYS TO TOWN</p> <p>People in Nimbin feel that there could be bigger feature and impact statements at the entry and exit points in town using signage and public art. This helps welcome visitors and create a sense of arrival in town. Examples could include art installations or planting features.</p>	Community Council	Medium	\$\$					
17	<p>ACCOMMODATION FOR VISITORS</p> <p>Increased accommodation options for tourists and visitors is needed in order to allow for the economic growth of the centre. Improved accommodation offerings will allow people to stay, spend and enjoy the town and surroundings. It also increases the capacity for the town to host more local events and sustain local businesses long term. Accommodation could be provided in a sustainable way and even provide overnight stay opportunities at or near sustainability hubs to increase educational and eco-tourism.</p>	Local businesses Future providers Chamber of Commerce	Medium	\$\$\$					



#	Action name / description	Champion	Timing	Cost	Themes				
					1	2	3	4	5
18	<p>PUBLIC LIBRARY + COMMUNITY HUB</p> <p>The community of Nimbin desire a permanent public library and community hub. In addition to a library the site could host a museum, archive centre, visitor information centre as well as shared spaces for use by the community. Engagement activities concurred that it was preferred the library not be located at the top of Peace Park, as the village would lose a key recreation area, especially for children and youth. There is an opportunity to explore other sites for the library.</p> <p>This includes the possibility of use of the St Vincent de Paul op shop building at 40 Cullen Street, which has been vacant for more than 12-months. This is an existing facility that is underutilised and is in the perfect geographic location. It has ample floor space for a mixed-use site and parking available on-site. The leasing of an existing building would negate the need for a major capital investment.</p> <p>Another option to utilise an existing building could be to locate services within the Nimbin Community Centre, however it is unlikely enough floor space would be available.</p> <p>Options to build something on Council-owned land would be to explore options at Peace Park or Bellevue Park. There was also a strong desire expressed by the community to utilise the vacant 'fire site' in the middle of town. This would require Council to purchase the land in addition to building a facility.</p> <p>It is proposed that a further feasibility study is undertaken to identify which of the above options would be the most valuable to progress with.</p>	<p>Council</p> <p>Community</p> <p>Chamber of Commerce</p>	Short - Long	\$\$\$					
19	<p>BELLEVUE PARK (COUNCIL OWNED ASSET) UPGRADES/PREFERRED USES</p> <p>Through consultation, participants were asked about potential improvements for Bellevue Park. There was a mixed response from the community with many wanting to see the addition of gardens/greenspace, more shade and passive recreation opportunity as well as better connectivity to the rest of town via paths designed for pedestrian and active transport access. Additionally, future opportunities included community facilities, sporting activities, emergency services or Show Society.</p> <p>Due to the position and existing use of the site, a large majority of participants were unfamiliar with the site or did not have a specific project suggestion. In light of this it is suggested that additional engagement is undertaken with the community and stakeholders to delve deeper into potential future opportunities.</p>	Council	Short	\$\$					

3.5 Activate actions

'Activate' actions help create social infrastructure in places and spaces by providing activity, events and 'life' around town. These actions help with increasing the use, activity, sociability and interaction in places.

#	Action name / description	Champion	Timing	Cost	Themes				
					1	2	3	4	5
20	<p>PUBLIC ART PROJECTS + MAIN STREET MURALS</p> <p>The Nimbin community would like to see more public artworks commissioned, especially those that reflect Nimbin's diversity and creativity, transforming public spaces into vibrant expressions of community identity. This could include murals, sculptures/installations, public performance art and lighting installations.</p>	<p>Community</p> <p>Council</p> <p>Businesses</p> <p>Local Artists</p>	Short	\$\$					
21	<p>LOCAL EVENTS CALENDAR AND CULTURAL FESTIVALS</p> <p>Develop a comprehensive calendar of events and activities that take place within the village each year. It will be a beneficial tool for promoting the township and everything that is on offer. Publicising these opportunities will ensure year-round engagement and participation from locals and visitors alike. Include ways of connecting with the calendar both digitally and in-person. In addition to this, organise more annual festivals celebrating First Nations culture and environmental awareness, creating platforms for learning and community engagement. Noting that Nimbin hosts many existing festivals (e.g. Mardi Grass, Nimbin Show, Illuminate Nimbin, Roots Festival, NAIDOC Week) there are opportunities to host more. Ideas for festivals include: an annual show, health and wellness events, events celebrating sustainability, arts and cultural festivals and events and First Nations cultural events.</p>	<p>Community</p> <p>Council</p> <p>Businesses</p> <p>Local Artists</p> <p>First Nations community</p> <p>Chamber of Commerce</p>	Short	\$					
22	<p>NIMBIN MARKETS</p> <p>Support the development and expansion of the existing markets including opportunities to increase their frequency. This will allow local businesses to sell locally made products and help supply people in town with sustainable food and resource options.</p>	<p>Community</p> <p>Council</p> <p>Businesses</p> <p>Artisans</p>	Medium	\$					
23	<p>UP-LATE MAIN STREET NIGHTS</p> <p>Options to activate the main street at night and create a safe night scene could help local businesses and continue activities into the evening. A vibrant night-life could also appeal to tourists. Actions include encouraging night time use of tenancies (related or unrelated to daytime uses), and supporting the other actions relating to lighting and events.</p>	<p>Businesses</p> <p>Community</p> <p>Local Orgs</p>	Short	\$					



#	Action name / description	Champion	Timing	Cost	Themes					
					1	2	3	4	5	
24	<p>NIMBIN YOUTH HUB</p> <p>Increase activities and events for youth aged 15-25 through the creation of a youth hub space. It is proposed this action could include safe seating, chill out space and activities focused specifically on a youth audience. It could be created in an existing open space or through the creation of a new one.</p> <p>Community would also like to see more activities for youth including festivals/music festivals, increasing the quality and frequency of 'youth nights' activities, after school and evening activities, school holiday activities, movie nights, Battle of the Bands and skate competitions.</p> <p>Training and educational opportunities (outside of school) could also be investigated including providing opportunities for youth arts and cultural development (i.e., music/art/dance/theatre/performance workshops), youth sustainability workshops, and cooking workshops.</p> <p>More recreation activities for youth were popular including: Bike tracks, volleyball/netball, and table tennis. It is suggested these opportunities could be explored within some of the Council owned spaces including Peace Park.</p>	Community Council Local Youth Youth Orgs Youth Officers Chamber of Commerce	Short - Medium	\$\$- \$\$\$						
25	<p>SHOP FRONT ACTIVATION</p> <p>Shop front activation could help add colour and life to the main street, promote local businesses and help improve the experience for visitors. There are a number of creative, low cost ways this could be achieved including sticker decals, window paintings and art installations.</p>	Businesses Chamber of Commerce Local Artists	Medium	\$						
26	<p>RESOURCE RECYCLING FACILITY/CO-OP</p> <p>Create a not-for-profit worker run co-operative that promotes environmental sustainability and resource reuse. This model would allow the collection of high quality industrial discards, hard waste, furniture and other useful items with opportunity for low-cost resale to the public. Provides access to low-cost, recycled materials for eco-building, education, community groups, home DIY projects and art/craft projects. It is noted that this should support initiatives and actions within the Sustainable Nimbin Plan.</p> <p>This space can provide workshops for the community to demonstrate how to recycle and reuse materials or build projects. This can be integrated into an existing use such as 7 Sibley Street, or undertaken in a new space/group. To avoid volunteering recruitment, this could be aligned with a business or existing community facility.</p>	7 Sibley Street Community	Long	\$\$\$						



#	Action name / description	Champion	Timing	Cost	Themes					
					1	2	3	4	5	
27	<p>HISTORY TRAIL</p> <p>Nimbin already has historical signage on buildings and audio trails, but the promotion of this as a historical trail with more integrated signage. This could help create colour and vibrancy around town, act as part of a wayfinding system and educate about local history. This action builds off the existing audio storytelling trail and signage throughout town, and proposes linking in with the Rainbow Walk.</p>	Community Council	Short	\$\$						
28	<p>ILLUMINATE NIMBIN</p> <p>The Illuminate Nimbin festival is a popular drawcard that promotes the evening economy of Nimbin and reflects the communities values. It is proposed that this becomes an annual activation involving local businesses by encouraging them to display lanterns and remain open late to cater for events and visitors could help generate interest and additional income in the town. Community members can make lanterns and participate in workshops, displays, performances and parades.</p> <p>In additional opportunities include the development of a unique community performance art and activation piece on the main street that could be developed via a community engagement and arts education program to help activate the main street at night during the festival.</p>	Local artists Council Businesses Community groups State Gov.	Short	\$\$						



3.6 Manage actions

'Manage' actions are about creating momentum, sustainability and ongoing governance within Nimbin. These include actions that enable stakeholders to curate, govern, build capacity and help mobilise people and resources.

#	Action name / description	Champion	Timing	Cost	Themes				
					1	2	3	4	5
29	AGED CARE FACILITIES AND HOUSING Caring for the ageing members of the community is a high priority for people in Nimbin. Locals are in favour of developing high-quality solutions to manage aged care in the long-term that would allow them to stay in the community they love. Suggestions include development of quality residential retirement units (in line with Nimbin's values) and support to offer aged care services in the community. It is proposed Council and the community advocate for opportunities from State Government and other industry bodies to explore options in the village.	Council Developers Private Aged Care suppliers State Gov	Medium - Long	\$\$\$	█	█	█		
30	HOMELESSNESS SUPPORT AND AMENITIES People in Nimbin want to ensure ongoing support for homelessness services in the town and the provision of amenities for homeless people. Ideas for public spaces such as providing phone chargers, change rooms and showers for public use were highly favoured. However supporting social workers, community groups and volunteer networks to help homeless people access the services they need and connect socially is also important in the long term.	Council Community Nimbin Neighbourhood Centre Nimbin Advisory Group State Gov	Long	\$\$\$	█				
31	VOLUNTEER ENGAGEMENT PROGRAMMES Volunteerism is central to the identity of Nimbin, however it is recognised that community burn-out is a real challenge. It is proposed programmes are launched to increase volunteer engagement (focusing on environmental clean-up, community gardening, and support for the elderly). Additionally, provide enhanced support for existing volunteer run organisations, as the community and services in Nimbin are currently supported by a strong network of volunteers and community organisations. Community would like to see volunteers better supported and honoured for their commitments in future. It is proposed actions including the welcome pack continue to be promoted to encourage new residents to get actively involved in the management of the Nimbin community.	Council Community Nimbin Neighbourhood Centre Nimbin Advisory Group Chamber of Commerce	Short	\$	█				

#	Action name / description	Champion	Timing	Cost	Themes				
					1	2	3	4	5
32	INTERGENERATIONAL EXCHANGE INITIATIVES Facilitate intergenerational exchange initiatives, such as mentorship programmes and shared community spaces, to strengthen bonds and mutual learning including succession planning for volunteer run organisations.	Community Nimbin Neighbourhood Centre Chamber of Commerce	Medium	\$\$	█	█			
33	COMMUNITY DECISION-MAKING PLATFORMS Establish open forums and digital platforms for community decision-making, ensuring that all voices are heard and valued in the planning process.	Council Nimbin Neighbourhood Centre Nimbin Advisory Group Chamber of Commerce	Medium	\$		█			
34	COMMUNITY SAFETY INITIATIVES / DISASTER PREPAREDNESS Implement community safety initiatives, such as improved lighting and emergency response training, to ensure a secure environment for all residents. This should be in line with the existing Nimbin Community Disaster Plan.	Council Community Nimbin Neighbourhood Centre	Short	\$\$			█		
35	ONGOING COUNCIL MAINTENANCE Ongoing upkeep and maintenance of facilities in and around Nimbin is a priority for the community. It is proposed that Council continue to reflect on their ongoing maintenance of public spaces within the township including coordinating with local businesses and stakeholders to understand pain points.	Council Community Nimbin Neighbourhood Centre Nimbin Advisory Group Chamber of Commerce	Short - Long	\$					█
36	COMMUNITY LISTENED TO + VIEWS RESPECTED The people of Nimbin have a strong history of involvement, volunteerism and support for community-led actions in their village. Community would like to see the continuation of bodies including the Nimbin Advisory Group (NAG). Community engagement and communication would be welcomed in future to keep people aware of ways to give feedback, be involved, local projects and infrastructure development, space use and maintenance and Council decision making.	Council Nimbin Advisory Group Community	Short	\$	█	█			



#	Action name / description	Champion	Timing	Cost	Themes				
					1	2	3	4	5
37	GREEN ENERGY EXPANSION Community would like to see an expansion of green energy creation, storage and usage throughout the town. This includes investigating new forms of green energy initiatives, implementing more green energy production and storage and using green energy for extended purposes throughout town such as storage/ use of both Council owned and community assets.	Council Rainbow Power Company	Medium -Long	\$\$\$					

Section 4.0

Implementation



4.1 Recommendations for implementation

The ongoing success of the Nimbin Place Plan including the successful implementation of the actions identified in Section 3 will require an ongoing commitment from Council and the community to work together in identifying appropriate funds and other resources to deliver priority projects. The following five actions have been identified as the next steps to collaboratively and effectively implement the Nimbin Place Plan:

STANDING ITEM FOR THE NIMBIN ADVISORY GROUP (NAG)

The Nimbin Advisory Group (NAG) consists of community members and elected representatives to advise Council on matters relating to priorities and issues for the Nimbin community. It is proposed that the NAG (or any subsequent body representing the Nimbin community) has a standing agenda item regarding the implementation of the Nimbin Place Plan. This will ensure that the Nimbin Place Plan remains a 'living' and relevant document, and the actions informed by the border community are prioritised. It will also ensure ongoing accountability for implementation by stakeholders from all levels.

COUNCIL RESOLUTION

Upon adoption of the Nimbin Place Plan in November 2024, Council noted the need for a traffic management plan as well as a watering system for street planters. Council also resolved to undertake a Plan of Management for the community land at Peace Park (9 Sibley St) when funding becomes available.

COMMUNITY AND STAKEHOLDER OWNERSHIP

The implementation of the Shape, Activate and Manage actions in Tables 3.4-3.6 will require an ongoing commitment from Council and the community to work together to drive implementation. 'Champions' have been identified for each action, which promotes the concept of locally-led placemaking whereby the community members of Nimbin drive the projects which will best serve the community. Ongoing support from Council is necessary to assist the community to achieve these goals.

ALIGN WITH COUNCIL'S CAPITAL WORKS BUDGET

To appropriately budget for capital works, any prospective project must be identified in Council's Delivery Program and Operational Plan. Therefore, aligning the Nimbin Place Plan will enable funding eligibility for the priority projects to be commenced, namely the Peace Park upgrade, Allsopp Park upgrade and the main street revitalisation. Alignment between the budgeting process and actions identified in the Nimbin Place Plan will ensure that everyone is working toward the collective vision for the future of the village.

SEEK GRANT FUNDING

Adequate funding is necessary to enable the actions identified in the Nimbin Place Plan. Grant opportunities from State and Federal Government bodies will be pursued as they become available. Examples of grant opportunities Council could consider include the Stronger Communities Fund and Crown Land Improvement Fund (for works within Allsopp Park). To enable this, it will be important that the final Place Plan is shared internally with team members responsible for identifying and writing these grant submissions to ensure broadscale awareness and opportunities for advocacy.

REGULAR REVIEW

From the outset the Nimbin Place Plan was designed as a living document. In practical terms, this means the strategy should be regularly reviewed to celebrate milestones and actions achieved, whilst identifying priorities for the upcoming period. It will also allow for the refinement of actions depending on community sentiment, change over time and other influencing factors. It is suggested a review is undertaken every four years by Council.

