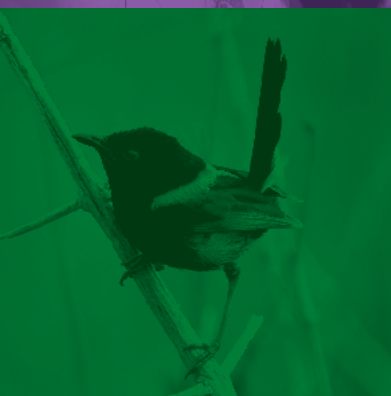




LOCAL MATTERS

LISMORE CITY COUNCIL NEWS
ISSUE 3, 19 FEBRUARY 2014



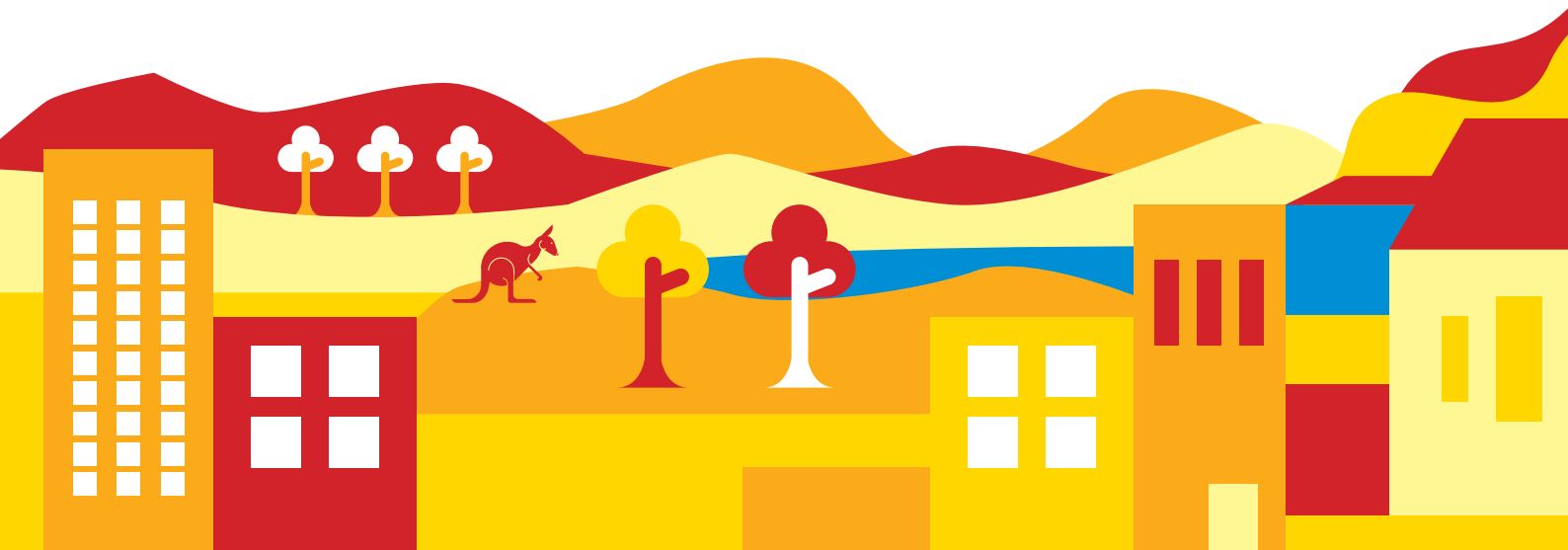
WWW.LISMORE.NSW.GOV.AU



COUNCIL DECIDES...

Council decisions made at the 11 February meeting include the following:

- Council will lease land to NBN Co. for two fixed wireless base stations at Blakebrook Quarry and 127-145 Gwynne Road, Jiggi. Both will include a 40m monopole and communications dishes. The leases are for a 20-year term and work is expected to begin in late 2014.
- A two-year contract for the provision of disability employment services for the new Materials Recovery Facility (MRF) has been awarded to the House With No Steps at Altonville. Ten House With No Steps employees will work at the MRF under supervision, sorting recyclables and removing contaminants before recyclables are baled and sent on for reprocessing.
- Council will call for fresh tenders for 'various materials and services' which includes supply of soil, sand and dust; supply of ready mixed concrete; traffic control and management; vegetation services; kerb and gutter extrusion; and supply of chemicals. Council was concerned the tender had not been advertised widely enough and sufficient tenders had not been received. Existing contracts will be extended until Council has completed this new tender process. The tender will be advertised in the next edition of Local Matters dated 5 March.



- The timeframe to develop a new business model for the Richmond-Tweed Regional Library has been extended by two years or until the Independent Local Government Review is complete. Lismore, Ballina, Byron, and Tweed councils have endorsed the move from an administrative business model to a partnership business model and the drafting of a formal Partnership Agreement.
- Council received a report on the progress of the 2013-14 capital works program for roads, parks and water infrastructure. This report is available in the Business Paper at www.lismore.nsw.gov.au.

A full list of all Council resolutions can be found in the Council meeting minutes at www.lismore.nsw.gov.au.



EVERY LITTLE BIT COUNTS

NEW RECYCLING RULES FOR CAPS AND LIDS



Forget everything you know about recycling your bottle caps, jar lids etc. There is a new way to recycle these items with the introduction of the Materials Recovery Facility (MRF).

Follow these steps



Plastic tops/bits and pieces

We have always asked residents to place plastic bottle tops and small plastic items in the waste bin. The good news is at the new MRF these can be recycled.

From now on, place plastic tops in a clean plastic milk bottle or in an old takeaway food container. Keep it in your cupboard and when it's full, put on the lid and chuck it in the recycling bin.

Why do bottle lids have to be taken off?

If bottle lids are left on, the tops trap air inside the bottle and it can't be compressed when it is being baled for recycling.

Why can't lids just go loose into the recycling bin?

If left loose in recycling bins the small size of lids can cause problems with the machinery at the MRF or will simply fall out as waste and be sent to landfill.

Does it have to be a milk bottle or takeaway container?

Yes. Milk bottles can compact without splitting which is essential to stop small plastics going to landfill. Takeaway containers have lids that clip on and ensure the caps don't fall out. Other containers such as ice-cream containers are not as sturdy and the lids may come loose.

What plastics can I recycle now?

Items such as bottle caps, bread tags, drinking straws, plastic ring pulls from Tetra Paks, pot plant and punnet labels... basically anything small and plastic.

Steel jar lids and twist tops

Steel bottle tops are too small to go straight in the recycling bin; they will fall through the sorting machines. The best way to recycle them is to put them back on the glass bottle and put this in the recycling. When the jars reach the glass crusher at the MRF, magnets will pick up the lid.

When you open a can, place the used lid back in the can and squeeze the top closed so it doesn't fall out in the recycling bin. At the MRF, magnets will pick up the steel can, with the tops inside, so it can be baled and sent off for reprocessing.



MOVE2CHANGE OFFERS FREE TRIAL

Join Men's Outdoor Exercise and/or our Beginners' Backyard Bootcamp.

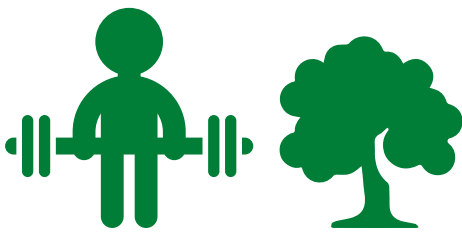
If you have a health condition, are above a healthy weight or just haven't exercised in a while, Move2Change could help you get fit and feel better. Our classes are just \$5 for anyone outside the paid workforce.

- Men's Outdoor Exercise is held Tuesdays and Fridays at 11am at the Lismore City Rugby Club.
- Beginners' Backyard Bootcamp is on Mondays at 5.30pm at Nesbitt Park, South Lismore, and kids are very welcome.

We have plenty more classes to choose from.

Give us a call on **6625 5377** or find us on Facebook at Move2Change.

This initiative is funded by the Australian Government.



**MEN'S
OUTDOOR
EXERCISE**

FIRST CLASS

FREE

EXPIRES 8/3/14



**V
O
U
C
H
E
R
S**



**BEGINNERS'
BACKYARD
BOOTCAMP**

FIRST CLASS

FREE

EXPIRES 8/3/14



MEETINGS, BRIEFINGS AND INTERVIEWS

There are many ways to engage with Council and Councillors. We encourage people to attend our meetings and briefings to stay up-to-date with the many issues affecting our area. You can also book in for a Councillor interview to speak directly with your elected representatives.

COUNCILLOR BRIEFINGS

Councillor briefings are so staff can provide background on issues or projects and Councillors have a chance to brainstorm and discuss.

On Tuesday, 25 February Councillors will be briefed on:

- Overtime rates.
- Reallocations, savings and investments for 2014/15.
- Section 94 Contributions Plan.

On Tuesday, 4 March Councillors will be briefed on:

- Lismore City Hall Business Plan.
- One Year Plan 2014-15 (budget) process and timetable.

Held in the Council Chambers from 6pm. All welcome.

AFTER HOURS COUNCILLOR INTERVIEWS

Councillors are available for interviews on the first and third Monday of each month commencing at 5.30pm at the Goonellabah Sports and Aquatic Centre.

Residents are invited to book in to discuss community issues with their elected representatives. Two Councillors attend the night on a roster.

On Monday, 3 March interviews will be conducted by Councillors Greg Bennett and Ray Houston. Interviews must be booked no later than 4pm on Friday, 28 February.

COMMUNITY PANEL MEETINGS

The Infrastructure Assets Panel will meet on Monday, 24 February in the Council Chambers at 6pm.

For more information about meetings and briefings or to book a Councillor interview, phone Graeme Wilson on 1300 87 83 87.



Council and Rous Water are inviting primary schools to sign up now for the 2014 Schools Water Challenge.

Students will learn about the importance of saving water through a range of group activities including a school audit on water use (with help from our education staff) and a short film competition where they will report the findings and demonstrate how they can save water. These will be shown at Council's World Environment Day celebrations in June.

There are cash prizes including \$1500 for first place plus every school receives a truckload of mulch (delivered) for taking part.

Schools need to register by Friday, 28 February.

Phone Water Education Officer Danielle Hanigan on 1300 87 83 87.

REGISTER FOR CLEAN UP AUSTRALIA DAY

Registrations are now open for Clean Up Australia Day on Sunday, 2 March.

Get together friends, neighbours, your school or community group, register your location and Council will pick up your rubbish bags on the Sunday afternoon.

In 2013 more than half a million volunteers removed 16,150 tonnes of rubbish at 7341 sites. Help make 2014 an even bigger year and keep your neighbourhood beautiful.

Register at www.cleanupaustaliaday.org.au or phone 1300 87 83 87 and talk to our staff.

FUTURE WATER STRATEGY ON EXHIBITION

Rous Water has released its draft Future Water Strategy – a blueprint for water supply over the next 50 years.

The draft strategy states that the existing supply will only meet predicted demand until 2024.

The draft strategy's key actions are to maximise water efficiency to extend the life of existing supplies and investigate the use of groundwater and the suitability of water re-use as new water sources.

It proposes putting the Dunoon Dam proposal on hold, with the option to progress it after 2018 if possible new water sources prove unfeasible or inadequate.

Rous Water is now seeking community feedback.

To view the draft Future Water Strategy and complete the feedback survey, visit www.rouswater.nsw.gov.au. To receive a copy by mail, email FWS@rouswater.nsw.gov.au or phone 1800 159 882.

Feedback is due by Friday, 11 April.





DEVELOPMENT CONSENTS ISSUED

ENVIRONMENTAL PLANNING AND ASSESSMENT ACT

In accordance with the provisions of Section 101 of the Act and Clause 124 of the EP&A Regulation, notification is given that the undermentioned developments have recently been granted consent.

DA No.

08/203-3 4 Holland Street, Goonellabah

Section 96(1A) modification to allow temporary storage of two containers.

11/459-2 161 and 163 Invercauld Road, Goonellabah

Section 96(1A) modification to amend the stage boundaries (condition 1); to allow benching of some allotments (condition 21); to allow construction of the roundabout within proposed Stage 1A (condition 28); amend condition 29 to require construction of the proposed footpath within Stages 1A, 1B and 2; amend condition 31 to require the construction of a retaining wall structure of Road 1 fronting Lot 22 DP 810042 with Stages 1A and 1B; and amend the fencing requirement of Lots S68 and S71 (conditions 67 and 68).

12/170/2 18 Taylor Avenue, Goonellabah

Section 96(1A) modification to permit the dwelling to be re-sited and made weather proof before construction of the driveway or provision of other underground services and before the subdivision certificate is lodged with the Land Titles Office.

13/5 17, 19 and 21 Newbridge Street, South Lismore

Bulk store (storage of caravans) including associated infrastructure (signage, fence).

13/294 49 Behan Access, Boat Harbour

Construction of second dwelling to create detached dual occupancy.

13/327 107 and 111 Magellan Street, Lismore

Alterations and additions to existing building comprising the following: construction of a new lift; raising of existing hall; construction of external walkways, landings and stairs to provide accessible access from lift to first floor of building; internal alterations; and new carpark layout.

13/330 177 Fox Road, Rosebank
Shed.

13/333 740 Cowlong Road, Eltham
Inground swimming pool.

13/335 40 Acacia Avenue, Goonellabah
Dwelling.

13/349 81 Trinity Drive, Goonellabah
Dwelling.

14/1 1 Jubilee Avenue, Goonellabah
Demolition of dwelling, outbuildings, vegetation, paths
and replacement of fence.

14/3 47 Walmsley Road, Bexhill
Inground swimming pool.



Details of applications and consents, together with conditions attached, may be inspected at Council's Corporate Centre during business hours or via DA Tracking at www.lismore.nsw.gov.au.



DEVELOPMENT PROPOSALS

ENVIRONMENTAL PLANNING AND ASSESSMENT ACT

As the consenting authority Council has received the following development applications (and/or applications for modifications to existing consents) for consideration.

DA No.

14/16

LOCATION: 946 Jiggi Road, Jiggi

DP LOT: Lot 12 DP 810848

APPLICANT: CivilTech Consulting Engineers

DESCRIPTION: Change of use to an outdoor recreation facility (house riding lessons)

CLOSING DATE: 5 March 2014

DA No.

14/30

LOCATION: 37 Cecil Street, Nimbin

DP LOT: Lot 2 DP 774889

APPLICANT: Visionstream Pty Ltd

DESCRIPTION: Telecommunications facility comprising a 40m monopole and ancillary equipment

CLOSING DATE: 5 March 2014

The above development applications and Statement of Environmental Effects may be inspected at Council's Corporate Centre or via DA Tracking at www.lismore.nsw.gov.au. Further information relating to written submissions is available on Council's website. There are laws regarding the mandatory disclosure of political donations in relation to planning matters. Political donations disclosure reporting forms are available from the Department of Planning website at www.planning.nsw.gov.au.



ON THE ROAD...

New median strip for Ballina Road

The NSW Government is upgrading Ballina Road with a new median strip between High Street and Invercauld Road.

The \$400,000 project is designed to stop the number of crashes caused by right-hand turns. In the last two years, 26 crashes have been recorded along that stretch of Ballina Road.

Once the median strip is in place, motorists will only be able to make left-hand turns into adjoining side streets and driveways. This will stop cars turning right across two lanes of oncoming traffic.

Council will begin building the median strip on behalf of Roads and Maritime Services in late February and work is likely to be completed within four weeks. Delays will occur on Ballina Road during this time.

In conjunction with this Roads and Maritime project, Council has built a new, two-lane link road between Kellas Street and Parkwalk Drive at Judy Court intersection to accommodate residents of William Blair Avenue.

Proposed changes to road levels

Council plans to reconstruct and raise the road levels of the following roads:

- Bellevue Avenue between its intersections with High and Weemala Streets at Lismore Heights. The road level would be raised by an average of 150mm.
- Dibbs Street, East Lismore, between Dalley and Walker Streets. The road level would be raised by an average of 250mm.

These roadworks will improve road conditions, traffic safety and drainage.

In accordance with the Roads Act 1993, plans and documentation of the proposed road levels and works are on exhibition until 19 March at the Corporate Centre during normal office hours.

People can make submissions about the proposal and adjoining landowners have been notified of this. Submissions objecting should state grounds for objection and the section of road it relates to.

Submissions are due by 4pm on 19 March. For information phone Design Engineer Barry Goodwin on 1300 87 83 87.



POSITIONS VACANT

WORK HEALTH & SAFETY (WHS) OFFICER

Please note: This is an additional position to the one advertised in December 2013. Applicants who applied for the previous position do not need to reapply as their applications will be considered for this new position.

We are looking for a dynamic and adaptable person who can work as part of a team and is able to build trust and foster partnerships within Council. We need a person who can work collaboratively with all levels of staff to promote a culture of safety and wellbeing in the workplace.

Depending on qualifications and experience, Council is offering a salary range from \$61,763 (Grade 14 Entry) to \$71,027 (Grade 14 Step 4) per annum with the opportunity for annual progression, plus 9.25% superannuation.

For a detailed information package visit www.lismore.nsw.gov.au or phone 1300 87 83 87. To discuss the position further phone Christine Imeson on (02) 6620 1658.

EXPRESSIONS OF INTEREST FOR CONSULTANT

Reconciliation Action Plan review

Background

Council's Reconciliation Action Plan (RAP) is due for its first annual review. This review will focus on internal corporate processes. It will include workforce development and the development of increased cultural competency among Council staff and Councillors. This review will also contribute to our emerging community consultative processes.

Scope of works

- Improved relationships between our staff and Lismore's Bundjalung people through collaborations with Council's emerging Aboriginal Advisory Group.
- Improved cultural competence among our staff and Councillors.
- Increased Aboriginal employment and job satisfaction.

Deliverables

1. Review and evaluation of Council's RAP.
2. Review of Council's Aboriginal Employment Strategy.
3. Sourcing of funding through DEEWRS employment program.

Closing date is Wednesday, 26 February. For information phone Lizette Twisleton on 1300 87 83 87.



COUNCIL BRIEFS

Proposed sewer construction works 2014-2015

We have awarded a contract valued at \$2,882,242 to Interflow Pty Ltd to renew approximately 8.3km of sewer mains using trenchless technology within the Lismore urban area. These works will begin in March and are expected to be completed 55 weeks later.



Water main reconstruction – Alexandra Pde, Lismore

We are replacing a water main across Alexandra Parade from the western end of Slater Street to the Showground from 27 February. Works will take place from 7am to 5pm Monday to Friday and should take around three weeks.

Local traffic conditions will change including temporary road closures and detours. Resident access will be maintained as much as possible. Traffic control will affect parking and access to some properties for short periods of time. Sorry for any delays and thanks for your patience.

Naming of roads in subdivision – Roads Act 1993, Section 162

We received a proposal to name new roads dedicated in the subdivision plans of Lot 102 DP 816880 and Lot 22 DP 810042, 161 and 163 Invercauld Road, Goonellabah, as shown below:
New roads: Evergreen Drive, Fern Pool Avenue and Billabong Court. No objections were received and therefore we have named the new roads accordingly.



CONTACT US:
1300 87 83 87

Lismore City Council's Corporate Centre
is located at 43 Oliver Avenue, Goonellabah.

We are open Monday to Friday from 8.30am to 4.30pm.

Our postal address is PO Box 23A, Lismore, NSW 2480.

You can email us at council@lismore.nsw.gov.au



Find us on Facebook,
YouTube or follow us on Twitter!



Local Matters is printed fortnightly
on ENVI Australian-made 100%
carbon neutral paper.