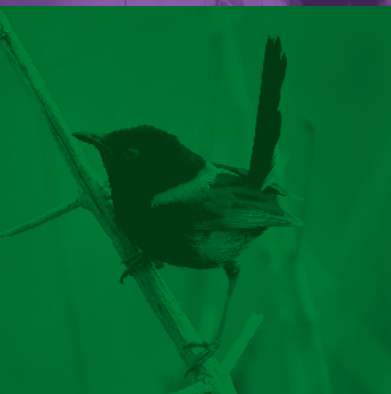


LOCAL MATTERS

LISMORE CITY COUNCIL NEWS
ISSUE 5, 19 MARCH 2014



WWW.LISMORE.NSW.GOV.AU



COUNCIL DECIDES...

Council decisions made at the 11 March meeting include the following:

- Council will write to the NSW Minister for Planning and Infrastructure, the Premier and Lismore MP Thomas George requesting ‘that the macadamia, dairy and beef industries in the Lismore LGA be given critical industry cluster (CIC) status to protect our economy and environment from unconventional gas mining’. Currently there are only two CICs in NSW: the horse and wine industries of the Hunter Valley. Under the State Environmental Planning Policy (Mining Petroleum Production and Extractive Industries) 2007, coal seam gas development is prohibited on CIC land.
- Council will discontinue its investigation into transferring ownership of a paper road (Huchison Road, Nimbin) from the Crown to Council. Council will seek to facilitate meetings between landowners and interested parties who wish to develop horse and walking tracks in this area.
- Council will lease land to NBN Co. for a radio base station in Dunoon. NBN Co. will co-locate its fixed wireless antenna on a Telstra monopole beside the water reservoir at 10A Fraser Road, Dunoon. The lease agreement is for 20 years.



- Council will reclassify and rezone part of the open space at 69 Cynthia Wilson Drive, Goonellabah, in order to allow for future sale.
- Council has adopted an Asset Management Strategy that provides a step-by-step guide on how to ensure infrastructure is adequately maintained and/or renewed over the next 10 years. Council is the custodian of approximately \$1.3 billion worth of assets including roads, footpaths, drains, community facilities, parks and gardens, water and wastewater networks. The Asset Management Strategy details how Council can improve asset management practices over the next decade. This includes increasing funding for maintenance and renewal; better reporting on the condition and lifecycle of assets; and detailing the risks of inadequate asset management and the level of service expected by the community.

A full list of all Council resolutions can be found in the Council meeting minutes at www.lismore.nsw.gov.au.



SURVEY LOOKS AT CBD/WILSONS RIVER

We are currently urging people to participate in a survey that will help prioritise future improvements to the CBD and Wilsons River.

Council has allocated almost \$1 million to a CBD/River Improvement Fund for the 2013-2017 period and wants to know how the community would like this money to be spent.

Researchers from Southern Cross University will survey shoppers face-to-face in the CBD block until 25 March and people can also fill out the survey online.

The community is being asked to rate improvements for the CBD and Wilsons River including new footpath paving, toilet upgrades, cleaning, traffic lights, making Magellan Street two-way, stabilisation and revegetation of the riverbank and building a riverbank walkway. The survey will also look at how to make the CBD more competitive with Lismore Shopping Square through initiatives such as shaded car parking.

The survey results will be deliberated by a CBD/River Citizens' Jury at a workshop on 24 May. The jury will consist of randomly selected residents and business people as well as representatives from CBD special interest groups.

The CBD/River Citizens' Jury will make recommendations to Council on spending priorities for the CBD/River Improvement Fund starting in the 2014/15 financial year.

Survey respondents can win a \$100 voucher at the Lismore Visitor Information Centre just by taking part. You can complete the survey online at www.scu.edu.au/business-school/index.php/67.



**COUNCIL HAS ALLOCATED ALMOST
\$1 MILLION TO A CBD/RIVER IMPROVEMENT
FUND FOR THE 2013-2017 PERIOD AND WANTS TO
KNOW HOW THE COMMUNITY WOULD LIKE
THIS MONEY TO BE SPENT.**



MEETINGS, BRIEFINGS AND INTERVIEWS

We encourage people to attend our meetings and briefings to stay up-to-date with the many issues affecting our area. You can also book a Councillor interview to speak directly with your elected representatives.

COUNCILLOR BRIEFINGS

Councillor briefings are held most Tuesday evenings so staff can provide background on issues or projects and Councillors have a chance to brainstorm and discuss.

On Tuesday, 25 March Councillors will be briefed on:

- **Future Water Strategies.**
- **Biodiversity Management Strategy Framework.**
- **General amendments to LEP.**

On Tuesday, 1 April Councillors will be briefed on:

- **Nimbin Walking Track.**
- **Review of Water and Wastewater Strategic Business Plan.**

Held in the Council Chambers from 6pm. All welcome.

AFTER HOURS COUNCILLOR INTERVIEWS

Councillors are available for interviews on the first and third Monday of each month commencing at 5.30pm at the Goonellabah Sports and Aquatic Centre.

Residents are invited to book in to discuss issues with their elected representatives. Two Councillors attend the night on a roster.

On Monday, 7 April interviews will be conducted by Councillors Neil Marks and Isaac Smith. Interviews must be booked no later than 4pm on Friday, 4 April.

For more information about meetings and briefings or to book a Councillor interview, phone Graeme Wilson on 1300 87 83 87.



ITEMS ON PUBLIC EXHIBITION

**This is your chance to have a say on Council business.
Feedback is recorded and considered by Council.**

Proposed donation – 19 March to 18 April

Council resolved to provide ‘in principle’ support for a donation of \$2500 towards the outstanding rates and charges, and writing off interest charges accrued during this advertising period, for 106 Cullen Street, Nimbin, to ensure ownership remains in community hands. This donation would occur prior to the transfer of tennis court ownership to the Nimbin Headers Sports Club.

For more information phone Annie McWilliam on 1300 87 83 87. You can post submissions to the General Manager, Lismore City Council, PO Box 23A, Lismore NSW 2480 or email council@lismore.nsw.gov.au.

AND IN OTHER NEWS...

C Block gets once-over

Museums and Galleries NSW has funded a consultant architect and conservator to assess options for the future refurbishment of C Block, opposite the Lismore City Library.

The consultants will write a report on the viability of C Block as a civic building and potential as a gallery. The consultant’s report will provide Council with a clear picture of the extent of works required to transform C Block into a functional gallery building.

Phone number clarification

Council would like to advise that its 6625 0500 number is still operational during normal business hours Monday to Friday, 8.30am to 4.30pm. We promote our 1300 87 83 87 number in all publicity as this is a 24-hour number. We realise the cost of these phone calls can differ depending on individual phone plans and wish to clarify our 6625 0500 number remains operational.



FIND OUT WHERE YOUR WATER COMES FROM

Rous Water is running free water bus trips from four parts of the Rous Water region to the Nightcap Water Treatment Plant and Rocky Creek Dam.

The bus trip is a chance to see first hand how the water treatment process works. People will learn how water is extracted from Rocky Creek Dam and the Wilsons River and then filtered and treated for drinking water.

The trip continues to Rocky Creek Dam for a walk over the dam wall to the spillway and rainforest catchment.

The bus trip from Lismore is on Wednesday, 9 April. It will leave from and return to the Heritage Park bus stop outside the Lismore Visitor Information Centre. The tour runs from 9.30am to 2.30pm. There are also trips from Alstonville, Ballina and Byron.

Bookings are essential. Phone Vanessa on 6621 8055.





WATER RESTRICTIONS POSSIBLE

After a long period of dry weather Rocky Creek Dam has fallen to 65% capacity, prompting Rous Water to prepare for possible water restrictions.

Level 1 water restrictions will be activated if Rocky Creek Dam reaches 60% capacity, which is likely to occur in the next few weeks if the region does not receive some significant rainfall.

The last time Level 1 water restrictions were imposed was winter 2007, however, this was only for a short period of time. Prior to this, water restrictions had not been in force since the 2002/03 drought.

People will be kept informed about water restrictions as the situation develops. Stay tuned and in the meantime, please use water wisely.



65%

For more information
visit www.rouswater.nsw.gov.au.



DEVELOPMENT CONSENTS ISSUED

ENVIRONMENTAL PLANNING AND ASSESSMENT ACT

In accordance with the provisions of Section 101 of the Act and Clause 124 of the EP&A Regulation, notification is given that the undermentioned developments have recently been granted consent.

DA No.

07/760-3 39, 41 and 45 Cullen Street and 12 Cecil Street, Nimbin

Section 96(1A) modification to the approved development by reconfiguring stage 2 lots so that a) the number of lots remain the same, i.e. proposed lots 1, 4, 5, 6, 7; b) proposed lot 4 comprising land largely below the sewer line traversing the property; and c) a restriction as the use being placed on proposed lot 4 ensuring no building or structure requiring the services of a sewage main be constructed on lot 4 similar to the restriction on that part of lot 1 DP 1179176 below the sewer main.

11/427-2 78 Bentley Road, Tullera

Section 96(1A) modification to the staging of the development and to reduce height and footprint of stupa and pagoda.

12/28-2 45 Elliott Road, South Lismore

Section 96(1A) modification to dwelling including raising floor height.

12/153 15 Alternative Way, Nimbin

Staged subdivision to create: 62 lots (58 village lots, 1 residue lot, 1 drainage reserve lot, 1 sediment basin lot and 1 sewer pump station lot), new roads, civil infrastructure works, stormwater detention basins, pedestrian pathways, associated earthworks, the removal of vegetation and revegetation/landscaping.

13/142 193A, 201A, 202, 242, 272, 305A, 305B, 305C and 316 Pelican Creek Road, South Gundurimba

An amalgamation of 8 lots and a boundary adjustment with 1 adjoining lot to create 5 rural lots.

13/310 2 Wilson Street, South Gundurimba

Removal of dwelling.

13/311 1 Cawongla Road, Rock Valley

Re-sited dwelling.

13/321 287 Numulgi Road, Woodlawn

Demolition of shed, new dwelling addition and inground swimming pool.

13/336 247 Boatharbour Road, Boat Harbour

Subdivision to create 1 additional lot for primary production purposes.

14/1 426 and 428 Ballina Road, Lismore Heights

Replacement of signage at the existing Shell/Coles Express Service Station.

14/13 29 Emily Street, Wyrallah

Shed with building line variation.

14/14 119 Unara Road, Bexhill

Detached double garage.

14/20 99 Uralba Street, Lismore

Change of use from medical centre to private residence.

14/21 102 Breckenridge Street, Wyrallah

Shed.

14/22 6 Mackellar Place, Goonellabah

Two-storey dwelling.

14/28 11 Cullen Street, Nimbin

Shed/garage.

14/31 45 James Road, Goonellabah

Carport.

97/296-2 32 Pendarra Crescent, Howards Grass

Section 96(1A) modification to delete conditions 31 and 32 pertaining to water hydrant.

Details of applications and consents, together with conditions attached, may be inspected at Council's Corporate Centre during business hours or via DA Tracking at www.lismore.nsw.gov.au.





NEW SATCHELS PART OF RECYCLING REVOLUTION

The new \$3...
to be open v...
LGA and we...
changes to

One of the b...
Satchels so...
your yellow r...



RESOURCE RECOVERY COLLECTION SATCHEL



HOUSEHOLD BATTERIES



MOBILE PHONES



GLASSES



PRINTER CARTRIDGES



CD'S AND DVD'S



WINE CORKS



X-RAYS


WHEN FULL PLEASE SEAL THIS BAG AND PLACE IT IN YOUR YELLOW RECYCLING BIN. PLEASE PUT BATTERIES AND PRINTER CARTRIDGES IN A PLASTIC OR ZIP LOCK BAG BEFORE PUTTING THEM INTO THE SATCHEL TO HELP KEEP THE OTHER ITEMS CLEAN. ADDITIONAL SATCHELS CAN BE OBTAINED FROM LISMORE CITY COUNCIL CORPORATE CENTRE IN GOONELLABAH, LISMORE LIBRARY AND FROM THE REVOLVE SHOP AT THE WASTE FACILITY.

For more information please call the Waste Hotline on 1300 87 83 87 or visit www.northernriverswaste.com.au



65 million Materials Recovery Facility (MRF) is on track and expected within a month. It's the start of a recycling revolution for the Lismore. We need people power to make it work. That means making a few changes to how you recycle at home.

Big changes will be the introduction of Resource Recovery Collection Satchels. You can collect problem waste, pop it in the satchel and place this into your recycling bin.



Problem waste includes household batteries, reading glasses, corks, CDs and DVDs, mobile phones and accessories, small electronics (such as cameras, iPods, calculators) and printer cartridges. The Resource Recovery Collection Satchels will be available free of charge and provide an easy and convenient way for you to recycle these items.

Inside the MRF, the satchels are easy for staff to identify during the sorting process so these items can be removed from the recycling stream.

The items will be passed on for further recycling. For example, reading glasses will be given to the local Lions Club to send to impoverished nations around the world while old X-rays will go to the Scouts, who recycle them and raise funds for their activities. Used printer cartridges will be sent to Planet Ark to be recycled into plastic products and mobile phones will be recycled through the Mobile Muster.

It is expected the Resource Recovery Collection Satchels will help us to recycle 100 tonnes of these mixed products every year.

We will continue to keep you informed of recycling changes through Local Matters. Stay tuned for more updates and advice on where to collect your free Resource Recovery Collection Satchels.



COUNCIL BRIEFS



Nimbin pool closes for winter

The Nimbin Community Pool will be closed for the autumn/winter season from Monday, 14 April.

This means the pool will be closed over the school holidays but unfortunately this is unavoidable this year.

School holidays occur later than normal this year which has affected the pool closure schedule. We are sorry for the inconvenience and thank people for their understanding in this matter.

The Nimbin Community Pool will reopen in September.

Water main reconstruction Nielson St, East Lismore

We are replacing a water main along Neilson Street from Walker to Dalley Streets from 31 March. Works will take place from 7am to 5pm Monday to Friday and should take around five weeks.

Local traffic conditions will change including temporary road closures and detours. Resident access will be maintained as much as possible. Traffic control will affect parking and access to some properties for short periods of time. We apologise for any delays during this time and thank you for your patience and understanding.



COUNCIL BRIEFS

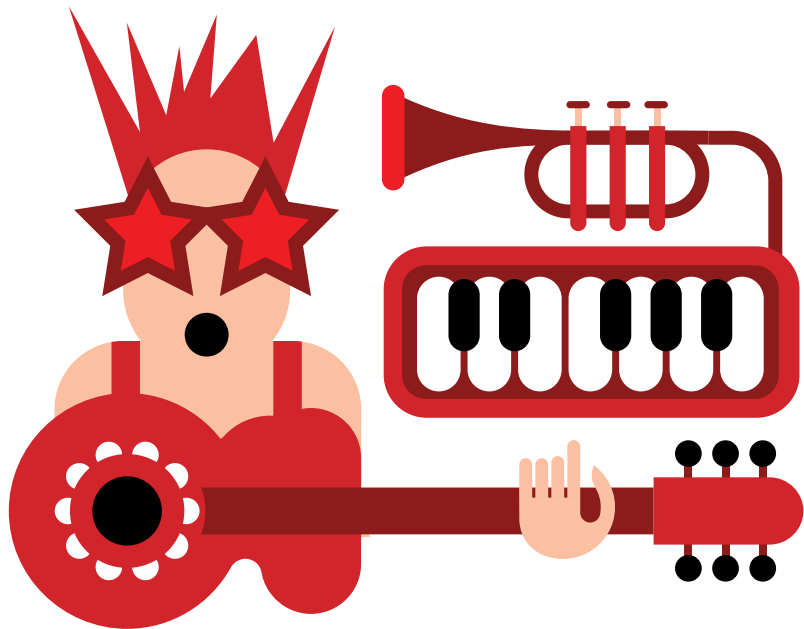
Safety measures for Wade Park

The toilet block at Wade Park in East Lismore was damaged recently after a car crashed into it – for the second time in 12 months. We will be installing bollards or barriers of some sort to prevent this happening in the future. The barriers should be in place within the next few weeks.

Young Songwriters Comp

Entries for the 2015 Young Songwriters Competition are open until 18 April.

The Young Songwriters Competition is open to songwriters and performers aged 12 to 25 with a range of prizes on offer from new music equipment to recording time in a studio.



Finalists will be judged by a live panel of local musicians at a performance night in Lismore on 8 May.

Categories are folk/country, hip hop, rock/indie, punk/metal and pop. To enter the competition, submit your entry in MP3 format with lyrics (attached as a Word document), artist photo and bio to lismoreyoungsongwriters@gmail.com. Include your name, age, contact details and category.

For more information phone Lizette Twisleton on 1300 87 83 87.



CONTACT US:

1300 87 83 87

Lismore City Council's Corporate Centre
is located at 43 Oliver Avenue, Goonellabah.

We are open Monday to Friday from 8.30am to 4.30pm.

Our postal address is PO Box 23A, Lismore, NSW 2480.

You can email us at council@lismore.nsw.gov.au



Find us on Facebook and
YouTube or follow us on Twitter!



Local Matters is printed fortnightly
on ENVI Australian-made, 100%
carbon-neutral paper.