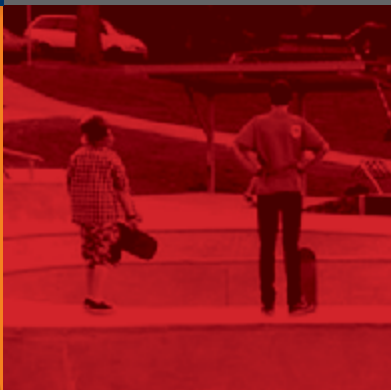
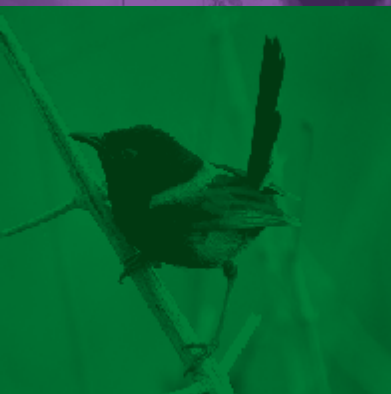




LOCAL MATTERS

LISMORE CITY COUNCIL NEWS
ISSUE 7, 16 APRIL 2014



WWW.LISMORE.NSW.GOV.AU



COUNCIL DECIDES...

Library funding campaign

Council will support the NSW Public Library Association's campaign for increased public library funding. The campaign states that funding levels have reached crisis point with NSW receiving the lowest per-capita funding for public libraries from any state government in Australia.

Local councils are now paying 93% of the costs to operate public libraries in NSW despite them being governed by state legislation.

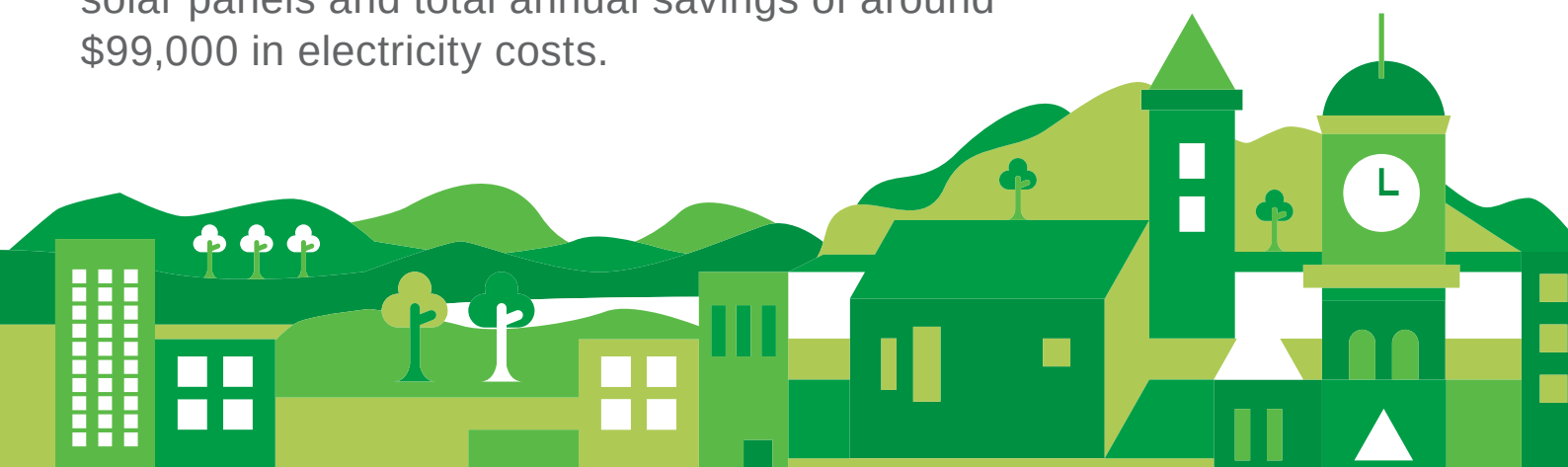
Council has resolved to support the campaign in the following ways:

- Make representations to Lismore MP Thomas George for increased funding from the NSW Government.
- Write to Minister for the Arts, George Souris, calling on the NSW Government to implement the Reforming Public Library Funding submission of the Library Council of NSW.
- Take a lead role in activating the campaign locally including distributing materials through local libraries.

Solar panel installation

Nickel Energy has been awarded a contract to install solar panels on the following Council facilities: Lismore Waste Facility (20kW); Materials Recovery Facility (100kW); Lismore Memorial Gardens Chapel (1.5kW); Lismore Regional Airport (15kW) and the fleet workshop in Brunswick Street (30kW).

There is an average three-year payback period for the solar panels and total annual savings of around \$99,000 in electricity costs.



Review of Council donations (Section 356 Review)

Public exhibition 17 April – 16 May

Council is reviewing the way it provides donations to community groups and organisations through its Section 356 donations.

Amended policies and a set of 'guiding principles' are now on exhibition. These state that annual donations to rural halls will increase from \$1000 to \$2000, there will no longer be a separate Youth Activities Fund and in the 2014/15 financial year there will be a 20% reduction to existing recipients (with some exemptions).

In the next step of the review, Council proposes to introduce a new, single Section 356 donations system in the 2015/16 financial year to allocate funds more efficiently and equitably.

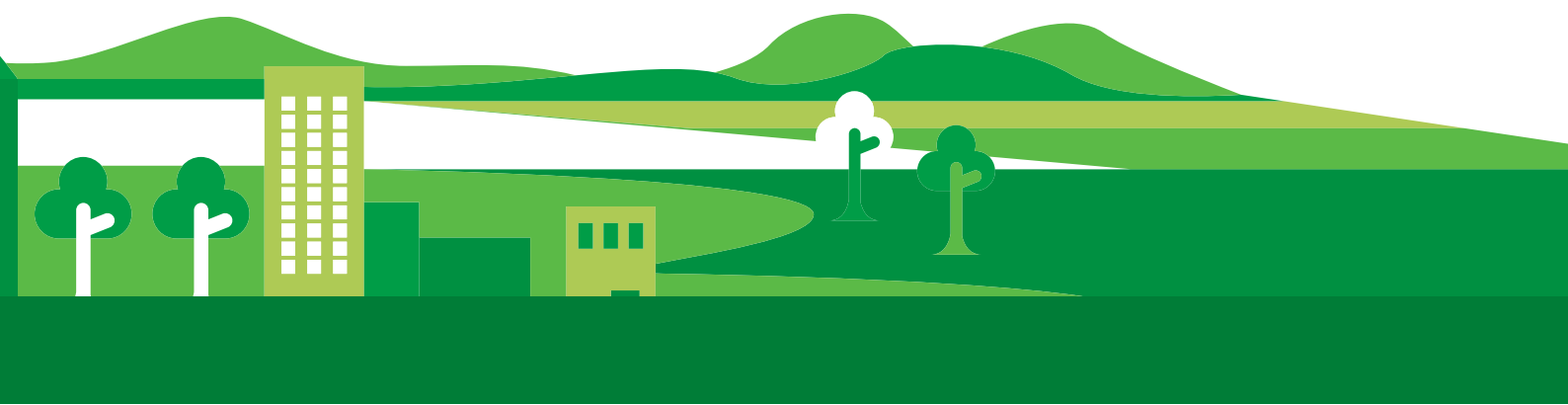
This new system will include a wholly online application process and all applications should be strongly linked to the Imagine Lismore 10 Year Plan.

Health Promotion Policy

Public exhibition 17 April – 16 May

Council's proposed Health Promotion Policy is based on current research and best practice in promoting healthy choices through planning, physical activity and nutrition.

The policy has been developed as part of the Move2Change project, which is funded by the Australian Government. It includes guidelines for land use and development controls to encourage active living and ensures that food provided to the community by Council always includes healthy options.



Section 64 and 94 Contributions Discount Policy

Public exhibition 17 April – 16 May

Council has placed a Section 64 and Section 94 Contributions Discount Policy on public exhibition.

The policy proposes discounts to S64 and S94 charges to promote growth in the CBD and encourage granny flats and other secondary dwellings, broadening the range of housing options in Lismore. Council hopes this will lead to smaller, more affordable accommodation for single people or couples without children. It could also allow elderly residents to 'age in place' by living independently while having the support of family living in a primary residence.

In essence, the policy would enable people to build additional accommodation on their existing land as long as the total does not exceed five bedrooms, two laundries and three toilets. At present, Council would charge an average of \$7000 in S64 and S94 charges for each additional bedroom.

The Section 64 and Section 94 Contributions Discount Policy also proposes that, within the CBD block, charges will not apply to new businesses or existing businesses changing location or varying their operations. This could represent potential savings of between \$1500 and \$50,000 depending on the nature and size of the business. This is designed to enhance revitalisation of the city centre.

Items on public exhibition can be viewed at www.lismore.nsw.gov.au or at the Corporate Centre during normal business hours Monday to Friday from 8.30am to 4.30pm.

Submissions can be posted to the General Manager, Lismore City Council, PO Box 23A, Lismore NSW 2480 or emailed to council@lismore.nsw.gov.au.

A full list of all Council resolutions can be found in the Council meeting minutes at www.lismore.nsw.gov.au.



MEMORIAL BATHS CLOSE... SOLAR INSTALLED

Lismore Memorial Baths will close for the autumn/winter season on 27 April.

During the closure we will be installing a solar hot water system as part of our Community Energy Efficiency Program (CEEP) project, funded by a federal government grant and Council's Cities for Climate Protection Implementation Fund.

An energy audit revealed the current pool heating system consumes more than 3500 kW/h of electricity each week, which is equivalent to more than three tonnes of CO₂.

The new solar hot water system will reduce energy use and emissions at the Memorial Baths by approximately 75%.

The entire CEEP project comprises \$600,000 worth of upgrades at the Lismore Memorial

Baths and the Goonellabah Sports and Aquatic Centre. This includes the installation of new variable speed drives to regulate the pool pumps, LED lighting at both facilities, signage and educational materials that encourage the community to reduce energy consumption at home.

Based on current energy costs, the upgrades will save us over \$124,000 each year to operate the pools and reduce greenhouse gas emissions by around 560 tonnes.



The new solar hot water system will be installed in time for the reopening of the Lismore Memorial Baths in September.



PUT A LID ON IT

A few weeks ago we asked you to forget everything you knew about recycling bottle caps and jar lids because the rules are changing. Well, we're sorry to say we're shifting the goalposts again after installing more advanced technology at our new Materials Recovery Facility (MRF).

This has made the process even easier. All you have to do is place bottle caps back on plastic bottles and jar lids back on your jars and throw them in the yellow recycling bin. It's that simple.

The jars will go through the sorting machines and magnets will extract the metal lids for recycling while the glass continues on to be crushed into road base and asphalt. The plastic bottles will be sorted, crushed, baled and sent off to be remade into other plastic products.

Our MRF has cost us \$3.65 million. It's a big investment. However, it could make us money through the selling of recyclables and greatly reduce the amount of waste going to landfill. But it will only work with your help.

We are introducing new recycling rules. In the coming month we will send everyone a brochure explaining the changes as well as a fridge magnet so you can remember the rules. They are not hard – in fact many make life easier – but they are important. If we are going to start a recycling revolution here in Lismore, we need people power to make it work.



Please help us put Lismore on the map as a recycling capital. Stay tuned for more info on the new MRF rules in the next two editions of Local Matters.





COUNCIL BRIEFS

New roundabout for Bruxner Highway

Construction of a new roundabout at the intersection of Bruxner Highway and Pineapple Road should begin in the next few weeks.



The new roundabout will improve safety and traffic flow at the intersection. It is funded by the federal government's Building Better Regional Cities program and will be constructed by Council.

There will be temporary lane closures and delays will occur. The work is expected to take 12 weeks.

Additional roadworks are planned to occur at the Ballina and Invercauld Road intersection, which

is being upgraded, and along Ballina Road to upgrade and extend the central median strip from High Street to Invercauld Road.

Council is asking motorists to be patient over the next three months as this work may cause significant delays from the edge of Lismore city to the Rotary Drive roundabout. We ask motorists to be careful and plan for these delays on their way into Lismore.

We thank you for your patience while these road safety improvements are under way.



Nimbin Waste Survey – have you got one?

It's important that every resident from Nimbin and surrounding areas fills out our current Nimbin Waste Survey. We have had reports that a few people did not get a copy in the mail.

If you have not received a Nimbin Waste Survey phone us on 1300 87 83 87 and we will post or email one directly to you.

Alternatively, you can pick up copies in the village at the Nimbin Visitor Information Centre or download a copy from

www.northernriverswaste.com.au.

It is vital everyone completes the Nimbin Waste Survey so we have a clear and accurate picture of what people need and want. This will help us develop options to deliver practical waste services into the future.

Completed surveys can be returned to the Nimbin Visitor Information Centre, emailed to **council@lismore.nsw.gov.au** or posted to PO Box 23A, Lismore NSW 2480.

ClubGRANTS – Category 1 funding

Community groups are invited to seek financial support through the ClubGRANTS Category 1 Funding Program, which is funded through the NSW Registered Clubs Gaming Tax.

Community groups in the Lismore LGA that fit within the guidelines for Category 1 applications (as outlined in ClubGRANTS Guidelines) are eligible to apply. Guidelines are available from the ClubsNSW website at **www.clubsnsw.com.au**. The maximum amount of funding per project is \$5000.

Applications are to be submitted online via Council's website at **www.lismore.nsw.gov.au**.

The local funding committee consists of representatives from the Lismore and District Workers Club, Lismore City Council, the NSW Council of Social Service and Family & Community Services.

Submissions opened on Monday, 14 April and close on Monday, 12 May at 6pm.

For more information phone Annie McWilliam on 1300 87 83 87.



DEVELOPMENT CONSENTS ISSUED

ENVIRONMENTAL PLANNING AND ASSESSMENT ACT

In accordance with the provisions of Section 101 of the Act and Clause 124 of the EP&A Regulation, notification is given that the undermentioned developments have recently been granted consent.

DA No.

05/133-2 130 Tregagle Road, Wyrallah

Section 96(1A) modification application to install new bathroom and toilet in existing shed.

13/193 36 Deloraine Road, Lismore Heights

Erection of two dwellings in staged construction and subdivision to create two Torrens title allotments and the removal of one silky oak tree.

13/285 143 Gungas Road, Nimbin

Dwelling, shed and shipping container.

13/294-2 49 Behan Access, Boat Harbour

Section 96(1) modification to revise BAL risk assessment.

13/345-2 20 Grace Road, Bexhill

Section 96(1A) modification to shed to include bathroom.

13/348 47, 49 and 57 Ashlin Road, Whian Whian

Subdivision boundary alteration.

14/4 92 Keen Street, Lismore

Replacement of existing timber floor with concrete slab.

14/19 767 Pinchin Road, Goolmangar

Shed.

14/23 17 William Blair Avenue, Goonellabah

Dwelling addition (covered deck).

14/25 3 Highview Crescent, Modanville

Shed.

14/26 6 Highview Crescent, Modanville

Studio (office and storage).

14/34 1033 Cawongla Road, Larnook

Change of use from church to dwelling with alterations and additions.

14/43 35 Woodlark Street, Lismore

Change of use of a building to a restaurant with associated internal fit-out and signage.

14/48 11 Lomandra Avenue, Caniaba

Dwelling.

14/49 49 Rudgley Road, Caniaba

Inground swimming pool and carports.

14/50 27 Pineapple Road, Goonellabah

Refurbishment and renovation of existing administration building to establish a new, two-storey administration building.

14/51 121 and 123 Crown Street, South Lismore

Ground-floor storage area.

14/52 92 Mountain View Drive, Goonellabah

Garage extension.

14/58 8 Melaleuca Court, Caniaba

Dwelling.

14/65 26 Roder Place, Richmond Hill

Dwelling alteration (enclose existing patio to create sunroom).



Details of applications and consents, together with conditions attached, may be inspected at Council's Corporate Centre during business hours or via DA Tracking at www.lismore.nsw.gov.au.



DEVELOPMENT PROPOSALS

ENVIRONMENTAL PLANNING AND ASSESSMENT ACT

As the consenting authority, Council has received the following development applications (and/or applications for modifications to existing consents) for consideration.

DA No. 14/71

LOCATION: 792 Tregeagle Road, Tregeagle

DP LOT: Lot 11 DP 626936

APPLICANT: Mr SJ Crake and Mrs DA Crake

DESCRIPTION: Change of use of an existing studio to a second dwelling to create a detached dual occupancy.

CLOSING DATE: 2 May 2014

DA No. 14/93

LOCATION: 15 Simeoni Drive, Goonellabah

DP LOT: Lot 20 DP 1037966

APPLICANT: Aldi Stores (A Limited Partnership)

DESCRIPTION: Change of use from commercial office premises to Aldi Food Store with associated alterations and additions including signage.

CLOSING DATE: 2 May 2014

The above development applications and Statement of Environmental Effects may be inspected at Council's Corporate Centre or via DA Tracking at www.lismore.nsw.gov.au.

Further information relating to written submissions is available on Council's website. There are laws regarding the mandatory disclosure of political donations in relation to planning matters. Political donations disclosure reporting forms are available from the Department of Planning website at www.planning.nsw.gov.au.



JOINT TENDER T2014-05



ORGANICS SHREDDING : NORTHERN RIVERS COUNCILS

We are inviting tenders from a suitably qualified company or persons to undertake organics shredding services at Lismore City Council's Recycling & Recovery Centre and at other Northern Rivers councils. Full details are in the RFT document. The contract is for a period of two years with an option, at Council's discretion, to extend the contract for up to a further two years.

Tender submission close: 2pm Thursday, 24 April 2014.

Interested parties are required to register via Council's eProcurement portal www.tenderlink.com/lismore where the relevant documents are available. Tenderers are encouraged to lodge their submissions in the electronic tender box provided.

If you experience any difficulties with accessing the above website or require further information, please phone the Tenderlink helpdesk on 1800 23 35 33.

WATER MAIN CONSTRUCTION

BALLINA ROAD, GOONELLABAH

We are replacing a water main along the northern side of Ballina Road, Goonellabah, from Bruxner Crescent east to Bruxner Crescent west from Monday, 28 April. Works will take place from 7am to 4pm Monday to Friday and should take about four weeks.

Local traffic conditions will change including temporary road closures and detours. Resident access will be maintained as much as possible. Traffic control will affect parking and access to some properties for short periods of time. Sorry for any inconvenience this may cause and thanks for your understanding during these essential works.



POSITIONS VACANT

APPLICATIONS ARE INVITED FOR THE FOLLOWING POSITIONS WITH COUNCIL.

Position	Salary range
Urban Works Supervisor	\$68,544 to \$78,826 per annum + super
Senior SCADA Technician	\$51,407 to \$59,118 per annum + super
Lismore Recycling & Recovery Centre Labourer	\$40,935 to \$47,075 per annum + super
Water Systems Operator	\$45,330 to \$52,130 per annum + super
Trainee – Water & Wastewater Operations	\$351.80 to \$603.80 per week + super (depending on age/educational qualifications)

All positions close 30 April 2014.

Detailed information packages are available on our website www.lismore.nsw.gov.au or phone us on 1300 87 83 87.





MEETINGS, BRIEFINGS AND INTERVIEWS

We encourage people to attend our meetings and briefings to stay up to-date with the many issues affecting our Local Government Area. You can also book in for a Councillor interview to speak directly with your elected representatives.

COUNCILLOR BRIEFINGS

Councillor briefings are held most Tuesday evenings so staff can provide background on issues or projects and Councillors have a chance to brainstorm and discuss.

On Tuesday, 22 April Councillors will be briefed on:

- **Building Business Bridges.**
- **Nimbin Walking Track.**

Held in the Council Chambers from 6.30pm. All welcome.

On Tuesday, 29 April Councillors will be briefed on:

- **One Year Plan 2014-15 (budget).**

Held in the Council Chambers from 6pm. All welcome.

AFTER HOURS COUNCILLOR INTERVIEWS

Councillors are available for interviews on the first and third Monday of each month commencing at 5.30pm at the Goonellabah Sports and Aquatic Centre.

Residents are invited to book in to discuss community issues with their elected representatives. Two Councillors attend the nights on a roster.

On Monday, 5 May interviews will be conducted by Councillors Greg Bennett and Simon Clough.

Interviews must be booked no later than 4pm on Friday, 2 May.

For more information about meetings and briefings or to book a Councillor interview, phone Graeme Wilson on 1300 87 83 87.



CONTACT US:
1300 87 83 87

Lismore City Council's Corporate Centre
is located at 43 Oliver Avenue, Goonellabah.

We are open Monday to Friday from 8.30am to 4.30pm.
Our postal address is PO Box 23A, Lismore, NSW 2480.

You can email us at council@lismore.nsw.gov.au



Find us on Facebook and
YouTube or follow us on Twitter!



Local Matters is printed fortnightly
on ENVI Australian-made, 100%
carbon-neutral paper.