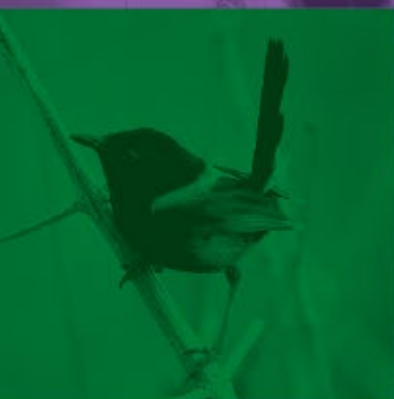




# LOCAL MATTERS

LISMORE CITY COUNCIL NEWS  
ISSUE 15, 6 AUGUST 2014



[WWW.LISMORE.NSW.GOV.AU](http://WWW.LISMORE.NSW.GOV.AU)





# DEVELOPMENT CONSENTS ISSUED

## ENVIRONMENTAL PLANNING AND ASSESSMENT ACT

In accordance with the provisions of Section 101 of the Act and Clause 124 of the EP&A Regulation, notification is given that the undermentioned developments have recently been granted consent.

### DA No.

**02/141-2 40 Conte Street, East Lismore** Section 96(1A) modification to condition 1 to include reference to a staging plan to permit staged registration of the subdivision.

**11/128-2 237 Gungas Road, Nimbin** Section 96(1A) modification to condition 1 which refers to the approved lot layout.

**11/362-3 31 Graham Road, Marom Creek** Section 96(1A) modification to change the dimensions of stages 3 and 4 and add a new, covered timber deck.

**14/16-2 18 Gardner Road, Jiggi** Section 96(1A) modification to amend conditions 3 and 4 pertaining to number of students per lesson and hours of operation.

**14/55 289 Keen Street, East Lismore** To undertake the change of use of the premises to a community facility (LightnUp); alterations and additions to the building; remediation of the site (cap and contain); and construction of an on-site car parking area.

**14/109 558 Ballina Road, Goonellabah** Change of use to dwelling (house, artist studio and gallery).

**14/141 2/173 Invercauld Road, Goonellabah** Patio.

**14/148 52 Skyline Road, East Lismore** Storage shed.

**14/156 31 Dawson Street, Lismore** Subdivision (to create one additional lot).

**14/168 8 Rotary Drive, Lismore Heights** Dwelling addition (second storey addition), inground swimming pool and removal of trees.

**14/172 81 Cowlong Road, McLeans Ridges** Awning and internal alterations to dwelling.

**14/174 10 Fermoy Avenue, Lismore** Dwelling addition (deck extension to incorporate an above-ground swimming pool).

**14/192 1 Kurrajong Place, Caniaba** Dwelling addition (extension to upper rear deck) and retaining wall with building line variation to 5.8m to Caniaba Road.

**14/193 542 Pelican Creek Road, Caniaba** Shed.

Details of applications and consents, together with conditions attached, may be inspected at Council's Corporate Centre during business hours or via DA Tracking at [www.lismore.nsw.gov.au](http://www.lismore.nsw.gov.au).

## PROPOSED CHANGES TO ROAD LEVELS

In accordance with the Roads Act 1993, plans and documentation of the proposed construction works and road level changes detailed below are on public exhibition for 30 days at our Corporate Centre and on our website at [www.lismore.nsw.gov.au](http://www.lismore.nsw.gov.au).

LOCATION/WORK	SECTION OF ROAD AFFECTED	CHANGE IN ROAD LEVEL
Elliot Road, Sth Lismore Road pavement rehabilitation	Between its Crown St and Wilson St intersections	Raise an average +100mm to a maximum +200mm
Boatharbour Road, Eltham Road pavement reconstruction	0.6km section starting 0.3km south of Alexander Lane intersection	Raise an average +150mm to a maximum +400mm to smooth out a dip
Numulgi Rd, Numulgi Road pavement reconstruction	0.5km section south of Lockton Rd	Raise an average +150mm to a maximum +300mm to smooth out a dip

Road pavement rehabilitation work will improve road structure, traffic safety and vehicle ride for these sections of road. Work will be completed in the 2014/15 financial year and road users and adjoining landowners will be notified upon scheduling of the works. The proposal includes raising the road level and driveways will be modified to match.

The public are entitled to make written submissions, which should state the objection and the section of road it relates to. Submissions are due by 4pm on 8 September 2014.

**For more information phone our Design Engineer Barry Goodwin on 1300 87 83 87.**



# MAJOR EVENTS COMING UP IN LISMORE

## *TV show talent wanted*

Australia's biggest talent showcase – the Fast Track Talent Showcase – is coming to Lismore City Hall on 27 September.

The showcase is where scouts find talent from rural areas to audition for reality TV shows such as *The Voice* and *X Factor*. If you're a singer, dancer, comedian, DJ or part of a duo/band etc, register now. You must be aged six and over.

There's a \$2000 first prize for the best performer and family, friends and community members are invited to be part of the live audience and see celebrity guest, 2014 *The Voice* contestant Krishool, in concert.

To enter, send your name, email address, postcode, age and a brief description of your act to [lismore@fasttracktalent.com.au](mailto:lismore@fasttracktalent.com.au) or phone 1300 327 801 (1300FAST01) for more information.

**Tickets to the show are available on 6622 0300 or visit [www.lismorecityhall.com.au](http://www.lismorecityhall.com.au).**



*Council's own Monique Hope, our 24-year-old Tourism Support Officer, will be registering for the Fast Track Talent Showcase as a member of two local bands – Snatchettes and Substation.*

## Football/rugby majors – tix on sale now!

Tickets are now on sale for two major sporting events coming to Oakes Oval in Lismore this September.

**7 September:** A-League football with **Melbourne City Football Club vs Central Coast Mariners.**

**14 September:** National Rugby Championship match with **NSW Country Eagles vs Brisbane City.**

**Book now and don't miss out. Visit [www.visitlismore.com.au](http://www.visitlismore.com.au).**

## Melbourne Cup tour comes to town

On Friday, 29 August the 2014 Emirates Melbourne Cup Tour will be coming to Lismore for a one-day stopover.

Starting in WA, the 18-carat gold Melbourne Cup is making its way across Australia and New Zealand to enable locals to learn about its history ahead of the Melbourne Cup Carnival.

The community can attend the Melbourne Cup's Lismore welcome at 9am in Spinks Park. This includes an official welcome by the Mayor, morning tea and a performance by Roundabout Theatre Co.

That afternoon from 3-5pm at Lismore Shopping Square, there will be a spring racing fashion parade, children's activities and a chance for people to view and get photos with the Melbourne Cup.

Everyone is welcome.

## Arts in August 1-30 August

Arts in August is a new creative concept showcasing the amazing talent to be found in Lismore, Nimbin and our villages. The program features

world-class performances and productions in poetry, visual arts, live theatre, music and dance. It includes arts trails, exhibitions, gallery tours and live shows.

Be uplifted, challenged, intrigued and inspired.

**For a full program go to [www.visitlismore.com.au](http://www.visitlismore.com.au).**





# LATEST NEWS AND UPDATES

## NEW LISMORE BUSINESS PANEL MEMBER SOUGHT

**Lismore business community – non city centre area (Zone A)**

We are seeking nominations for a position on the Lismore Business Panel, which oversees the Special Business Rate Variation Levy (SBRVL) including the Lismore Promotion Program and City Centre Management Program.

To be eligible, you must be a property owner and/or the owner or manager of a business, directly or indirectly contributing to the SBRVL and situated in Zone A (North Lismore, Lismore Heights, Goonellabah and Richmond Hill – see map 1 at [www.lismore.nsw.gov.au](http://www.lismore.nsw.gov.au)).

Nominations will be reported to a future Council meeting.

Application forms are available at [www.lismore.nsw.gov.au](http://www.lismore.nsw.gov.au) and please read the current Lismore Business Plan. Nominations are due by close of business on Friday, 5 September 2014.

Nominations can be posted to PO Box 23A, Lismore NSW 2480, emailed to [council@lismore.nsw.gov.au](mailto:council@lismore.nsw.gov.au) or faxed to 02 6625 0400. For more information phone Corporate Support Officer Melinda Kent on **1300 87 83 87**.

## PUBLIC HEARING REPORT FOR LEP AMENDMENT NO. 8

Pursuant to Section 29 of the Local Government Act 1993, a public hearing was held into the reclassification of selected Council-owned land from 'community' to 'operational' under the Lismore Local Environmental Plan 2012 on Monday, 14 July.

The report, which was prepared by the chairperson, can be viewed on our website at [www.lismore.nsw.gov.au](http://www.lismore.nsw.gov.au) and at our Corporate Centre.

The public hearing report will be considered by Council in the coming months, along with all written submissions relating to the proposed reclassifications/rezonings under the Lismore LEP 2012.

## 2014/15 LOCAL HERITAGE ASSISTANCE FUND

If you live in a heritage home or conservation area, you can now apply for small grants to improve or repair your property.

The annual grants are offered in conjunction with the NSW Heritage Office to carry out conservation works on listed heritage items or items within conservation areas listed in the Lismore Local Environmental Plan.

Property owners are limited to a maximum of \$2000 per application and this must be matched dollar for dollar with the applicant's own finances. Works previously funded include reinstatement of decorative architectural features, repainting, and window, fence and verandah repairs.

The closing date for applications is Wednesday, 20 August 2014 and successful applicants will be announced in September.

Application forms are available at [www.lismore.nsw.gov.au](http://www.lismore.nsw.gov.au), from our Corporate Centre or phone us on **1300 87 83 87**.

## PESTICIDE NOTIFICATION

Council will be spraying the pesticide Double Time for control of broadleaf weeds at all urban and rural sporting fields between 28 July and 31 October 2014. For more information phone Kevin Copas on **1300 87 83 87**.

**A** big congrats to the winners and all the finalists who performed at the Young Songwriters Competition awards night on Thursday, 24 July at the Lismore City Bowlo. A full house, great atmosphere and super impressive young talent.

**And the winners are...**

**Young Female Songwriter of the Year:** 15-year-old Cleo Worts.

**Young Male Songwriter of the Year:** 23-year-old Ned Cain.

**Folk:** 16-year-old twins Deana and Julia Batten.

**Pop:** 18-year-old Lali Gill.

**Rock/Indie:** 23-year-old Tim Strong.

**Punk/Metal:** 22-year-old Rose Wadsworth.

**Urban/Electronic:** 14-year-old Jackson Reid.

*Right: Big winners Cleo Worts and Ned Cain.*





# MOUNTAIN BIKE TRAIL PLANS TAKE SHAPE

Council is hosting a drop-in information session on 28 August to discuss the planned network of mountain bike trails around the Wilsons Walking Track in Lismore.

The project will involve the restoration of the existing Wilsons Walking Track and a cross-country mountain biking loop.

At present there is no funding for the project, but Council would like to get the project shovel-ready in order to apply for grants.

The new Wilsons Walking Track is proposed to be built as a 'shared-use trail', 2-3m wide, linking Robinson's Lookout to Amaroo Place – a total distance of about 1.6km. Around this would be a 7km network of mountain bike trails.

The plans include five mountain biking trails of varying difficulties, all of which will be loops and go in a single direction. They will be numbered and colour-coded for identification and the whole trail network can be ridden in one large loop.

There are three access points to the trail network – Robinson's Lookout, Keen Street and Amaroo Place.

A drop-in session for the community is being held at Council's Corporate Centre on Thursday, 28 August from 3.30pm to 4.30pm. There will be display boards of information and staff can answer questions. Information is also on display at Lismore Library.

For more information phone our Sport and Recreation Officer James Voght on 1300 87 83 87.

## POSITIONS VACANT

**Title:** Works Supervisor/Contracts.

**Salary:** \$63,371 to \$72,877 + super.

**Closing date 11 August 2014.**

Detailed information packages are available at [www.lismore.nsw.gov.au](http://www.lismore.nsw.gov.au) or phone **1300 87 83 87**.







# LATEST SPORTING ANNOUNCEMENTS

## Clifford Park \$1.68 million upgrade

Council has received a \$1.68 million grant from Clubs NSW to develop Clifford Park in Goonellabah.

Council collaborated with the Northern United Rugby League Football Club on the grant application to create a master plan for the park. The improved park will enable a variety of sporting activities to be held and will also create an expanded and upgraded community recreational space.

The upgrade will include fitness equipment, a children's playground, a walking track around the grounds and a new amenities block.

"This is amazing news for the Goonellabah community – it's a very substantial amount and means we can fully redevelop the park, rather than doing it in a piecemeal fashion," said Council Sport and Recreation Officer James Voght.

"We hope this will really bring Clifford Park to life and invigorate the area with more sports and family events."

## Major Events Group funding

The annual Major Events Group funding round for 2014/15 is now open.

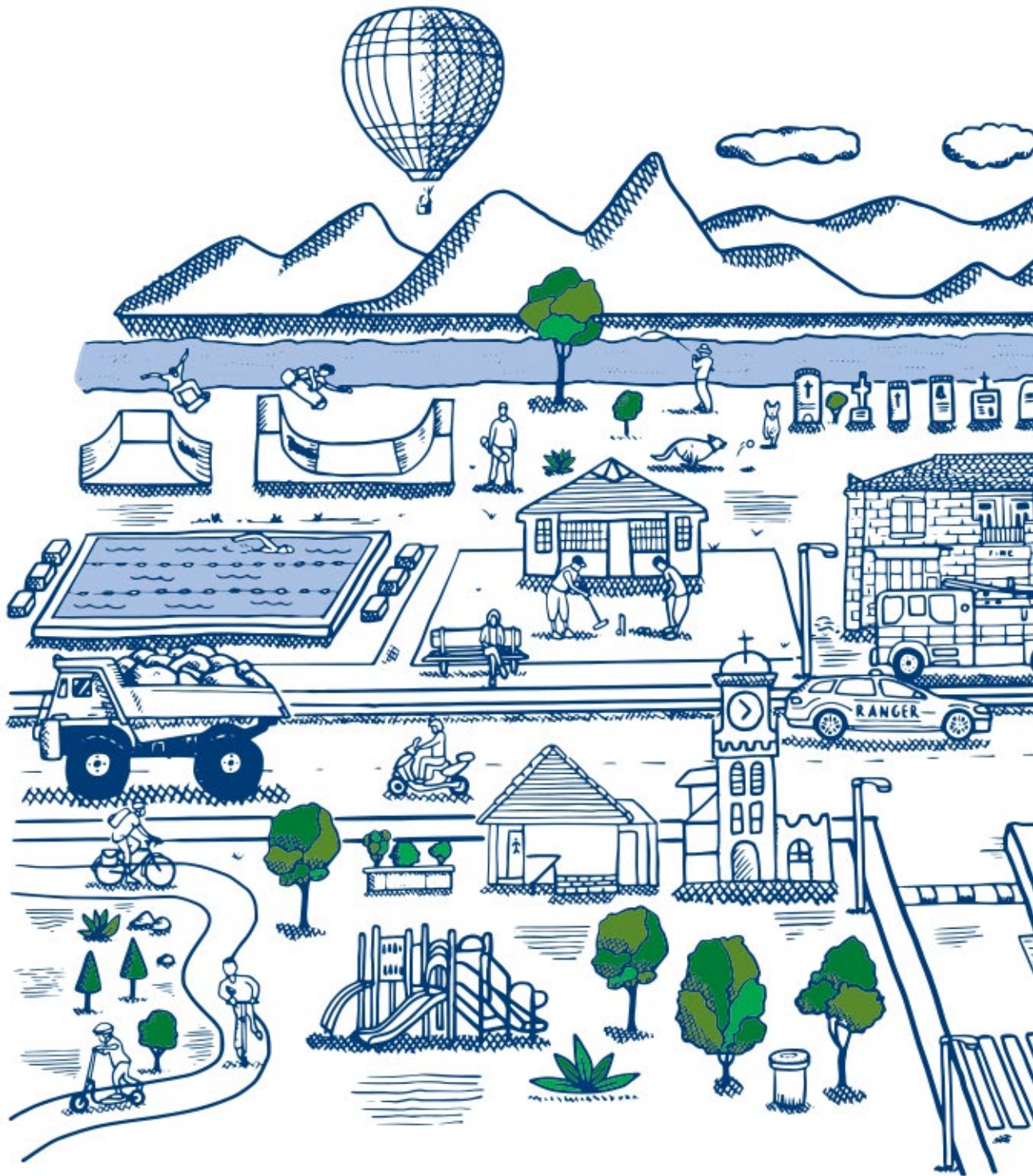
The funding is available for groups or individuals that wish to host one-off and/or major events, or events which can become self-sustainable in the future.

The funding is targeted toward events that encourage partnerships with the community/commercial sector and regional agencies to attract visitors to Lismore as a special events destination. All events that bring tourists to the city are eligible – sporting events, major events, festivals, conferences etc.

Events are assessed against a range of criteria including economic impact, media impact, private sector investment, tourist activity, environmental considerations and alignment with Council's Imagine Lismore 10 Year Plan. Preference is also given to events that make use of Council facilities.

Applications are open until Monday, 15 September 2014.

**Criteria and application forms are available at [www.lismore.nsw.gov.au](http://www.lismore.nsw.gov.au) or phone **Leanne Clark** at the **Lismore City Council Events Unit** on **1300 87 83 87**. Completed applications should be sent to [leanne.clark@lismore.nsw.gov.au](mailto:leanne.clark@lismore.nsw.gov.au) by close of business on 15 September.**



## Your rates are invested in vital services

- Urban and rural roads
- Public amenities
- Waste collection
- Leisure centres
- Parks and gardens
- Footpaths/cycleways
- Art gallery and libraries
- Traffic and city safety
- Sporting facilities
- Playgrounds
- Flood, fire and emergency services
- Regulation and enforcement
- Skateparks
- Street lighting



# YOUR RATES 2014/15

## Services and community facilities.

- Stormwater drains
- Community services
- Kerbing and guttering
- Airport
- Environmental planning and protection
- Town planning
- City Hall
- Bus shelters
- Memorial gardens and rural cemeteries
- Tourism
- Food shop inspections
- Quarries
- Community and cultural events

---

## Paying your rates

Your 2014/15 rates are payable in full by 31 August 2014 or by instalment on the following dates:

First instalment	31 August 2014
Second instalment	30 November 2014
Third instalment	28 February 2015
Fourth instalment	31 May 2015


If you have any questions regarding your rates, are having difficulty paying them or wish to update your details, phone us on 1300 87 83 87.

---

## Pensioner water rebate change

Council is changing the way we allocate pensioner rebates following numerous requests to distribute the rebate evenly throughout the year to assist with budgeting.

Historically, we have allocated the rebate by reducing quarterly water accounts by 50% until the annual maximum rebate of \$87.50 is reached.



---


## You can pay your rates via the following methods:

- Online at [www.lismore.nsw.gov.au](http://www.lismore.nsw.gov.au).
- In person using cash, cheque, EFTPOS, Mastercard or Visa at our Corporate Centre, any branch of the Commonwealth Bank (deposit slip required), or at any branch of Australia Post (for amounts between \$20 and \$10,000).
- By mail to PO Box 23A, Lismore NSW 2480.
- Using BPay telephone and internet banking. See account notice for details.
- By direct debit. An application form is available on our website or one can be mailed/emailed to you.
- By Post billpay. You can make online payments using your Mastercard or Visa, or phone 131 816 and pay by credit card over the phone.

---

The majority of pensioners reach the annual maximum rebate by the second quarter, so there was little to no reduction in the third and fourth quarter of the year.

We will now divide the annual maximum rebate evenly across each quarter. In this financial year, each eligible pensioner's quarterly water bill will be reduced by \$21.88. This will begin when the first 2014/15 water accounts are issued on 15 August.



# Rates and charges 2014/15

Rates will increase 2.3% in the 2014/15 year in line with rate pegging.

Rating category	Rate in dollar	Base amount
Business – Inner CBD	4.7723	\$360
Business – Urban	1.4751	\$360
Business – Other	0.9550	\$360
Business – Nimbin	1.1607	\$360
Residential – Urban/Village	0.6401	\$360
Residential – Rural	0.5161	\$360
Farmland	0.4810	\$360

## Wastewater charges

Connected	\$772.00
Unconnected	\$463.20
Non-domestic (per ET)	\$772.00
Flats (each)	\$540.40

## Waste charges

Household waste service (three bins)	\$279.10
Waste availability	\$10.00
Waste minimisation (inc. GST)	\$47.30

## Water charges

Consumption charge per kilolitre	\$2.99
Fixed service charge – 20mm	\$203.88

For more information on Council's 2014/15 rates and charges, visit [www.lismore.nsw.gov.au](http://www.lismore.nsw.gov.au) and look for the Revenue Policy section of the Imagine Lismore 1 Year Plan 2014/15.

# Where do your general rates go?

This chart shows the proposed expenditure for the average urban residential rate of \$1131 in 2014/15.



---

## Land valuation

Your rates are calculated using land values supplied by the Valuer General. For more information on land values visit [www.lpi.nsw.gov.au](http://www.lpi.nsw.gov.au) or phone **1300 052 637**.



CONTACT US:

**1300 87 83 87**

Lismore City Council's Corporate Centre  
is located at 43 Oliver Avenue, Goonellabah.

We are open Monday to Friday from 8.30am to 4.30pm.

Our postal address is PO Box 23A, Lismore NSW 2480.

You can email us at [council@lismore.nsw.gov.au](mailto:council@lismore.nsw.gov.au)



Find us on Facebook and  
YouTube or follow us on Twitter!



Local Matters is printed fortnightly  
on ENVI Australian-made, 100%  
carbon-neutral paper.