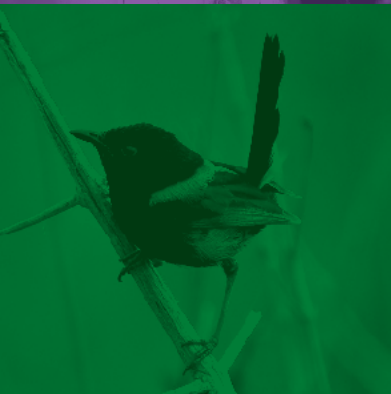


# LOCAL MATTERS

LISMORE CITY COUNCIL NEWS  
ISSUE 21, 29 OCTOBER 2014



[WWW.LISMORE.NSW.GOV.AU](http://WWW.LISMORE.NSW.GOV.AU)



# SEE RECYCLING IN ACTION AT FREE OPEN DAY

You've heard about it. You've read about it. And now you get to see our new MRF (Materials Recovery Facility) up close and personal!

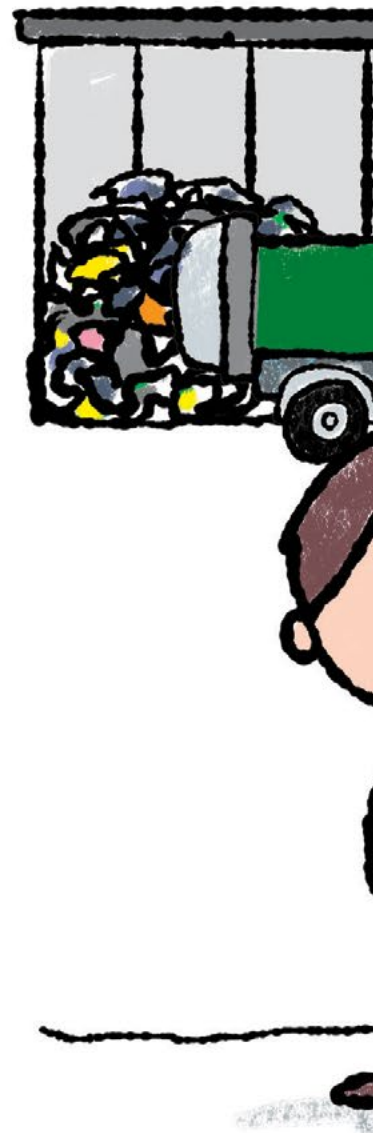
We are hosting a Lismore Recycling & Recovery Centre Open Day on Sunday 9 November from 9am to 2pm. Entry is free and everyone is welcome. There will be lots to see and do!

- Visit our new MRF, Glass Processing Plant and green waste composting site on one of our recycling tours.
- Take a guided walk of the Lismore Rainforest Botanic Gardens.
- Check out our new, 100% electric car.
- Enjoy fun activities with the kids including badge-making.
- Enter our competitions and win cool prizes.
- Watch entertaining performances by The Greenhouse recycling team.
- Check out our collection trucks and see how fast you can empty a wheelie bin!
- Grab a bite to eat at our sausage sizzle.

This is a great chance to learn about our new recycling facility and see how all the recycling changes you make at home help us reduce landfill and re-use precious resources.

Our MRF has revolutionised the way we recycle, giving us the ability to sell plastics to be made into new products and crush old glass and crockery into sand for asphalt and road base.

**Come and discover the wonders of recycling and have some fun. Entry is FREE.**



*The facility will*

now you  
ility) up

y,



## Attention:

*be **CLOSED** for rubbish and/or recycling drop-offs on this day.*

# BLAKEBROOK QUARRY OPEN DAY ROCKS!

Northern Rivers Quarry & Asphalt is hosting its annual Blakebrook Quarry Open Day on Friday, 7 November.

The free open day is a chance for any interested neighbours or community members to see what takes place at the quarry, or for high school students thinking of a career in mining or local government to see the facility in action.

Visitors will be treated to a free sausage sizzle, history display, a bus tour to see the asphalt plant and quarry floor to view the crushing activities, and an actual quarry blast as a grand finale.

People will also be able to see Lismore City Council's new pugmill, which can produce roadbase that meets Australian standards and RMS specifications. The idea is to attract business from neighbouring councils and be equipped to supply roadbase for large projects such as Pacific Highway upgrades.



## Gallery 60<sup>th</sup> birthday event cancelled

Due to unexpected circumstances, the Lismore Regional Gallery 60<sup>th</sup> birthday celebration planned for 8 November has been **CANCELLED**.

We apologise for any inconvenience to the community and wish the gallery a very happy birthday!

# 30% OFF ASBESTOS DISPOSAL

If you have asbestos and need to get rid of it, now is a good time, with 30% off asbestos disposal fees under the current Householder Disposal Scheme.

Funded by the NSW EPA, the program started on 1 July and is designed to make it cheaper and easier for people to get rid of asbestos safely.

People can dispose of up to 10m<sup>2</sup> of bonded asbestos via an approved asbestos removal contractor or purchase a Household Asbestos Disposal Kit from Council.

These DIY kits cost \$120 and include everything you need – from goggles and coveralls to drop sheets and waste asbestos bags – so you can safely remove asbestos from your home.

The reality is asbestos is deadly and if your house or apartment was built or renovated before the mid-1980s (even brick) it will most likely contain asbestos. Asbestos can be found in everything from kitchen splashbacks and vinyl floor tiles to downpipes and dog kennels.

We encourage people to take advantage of the 30% discount but also warn it is essential to remove asbestos safely or you put yourself and your family in genuine danger.



**Household Asbestos Disposal Kits are now available from the Lismore Recycling & Recovery Centre's weighbridge. For more information phone 1300 87 83 87 or visit [www.newaste.com.au](http://www.newaste.com.au).**



# MEETINGS, BRIEFINGS AND INTERVIEWS

There are many ways to engage with Council and Councillors. We encourage people to attend our meetings and briefings to stay up-to-date with the many issues affecting our Local Government Area. You can also book in for a Councillor interview to speak directly with your elected representatives.

## COUNCILLOR BRIEFINGS

Councillor briefings are held most Tuesday evenings so staff can provide background on issues or projects and Councillors have a chance to brainstorm and discuss.

On Tuesday, 4 November, Councillors will be briefed on:

- **Quarterly Budget Review Statement.**
- **South Lismore Sewage Treatment Plant investigation.**
- **National Stronger Regions Fund.**

## COUNCIL MEETINGS

An ordinary meeting of Lismore City Council will be held on Tuesday, 11 November.

Reports include:

- **Draft Biodiversity Management Strategy exhibition and consultation on a \$500,000 special rate variation.**
- **Councillors Expenses and Facilities Policy.**
- **Waterford Park Planning Proposal.**

Held in the Council Chambers from 6pm. All welcome.

Business papers are available at our Corporate Centre, Lismore City Library, selected rural stores and at [www.lismore.nsw.gov.au](http://www.lismore.nsw.gov.au).

## AFTER HOURS COUNCILLOR INTERVIEWS

Councillors are available for interviews on the first and third Monday of each month from 5.30pm at the Goonellabah Sports and Aquatic Centre.

Residents are invited to book in to discuss community issues with their elected representatives. Two Councillors attend the night on a roster.

On Monday, 3 November interviews will be conducted by Councillors Ray Houston and Graham Meineke.

Interviews must be booked no later than 4pm on Friday, 31 October.

## LISMORE BUSINESS PANEL

The Lismore Business Panel will meet on Friday, 21 November at the Gordon Pavilion, Oakes Oval, from 12-2pm.



The annual Nimbin Community Meeting is on Monday, 17 November at the Nimbin School of Arts (Town Hall) from 7pm. This is a chance for locals to meet with senior staff and Councillors to ask questions or discuss matters of concern or interest.

The Nimbin Community Meeting is a popular event and we encourage people to come and discuss local government matters that affect them. Everyone is welcome. Plenty of time for Q&A.

**For more information about meetings and briefings or to book a Councillor interview, phone Graeme Wilson on 1300 87 83 87.**



# T2014-16 CLIFFORD PARK BUILDING AND UPGRADE WORKS

Council is seeking tender submissions from construction and building companies for the upgrade of Clifford Park in Cassia Crescent, Goonellabah.

The upgrade works include a new sports amenities building including changerooms and kiosk, civil works, carpark upgrade and landscaping works.

A compulsory pre-tender meeting is to be held at 2pm on Friday, 31 October at Clifford Park.

**Tender submissions close at 2pm on Thursday, 13 November 2014.**

Interested parties are required to register at Council's eProcurement portal [www.tenderlink.com/lismore](http://www.tenderlink.com/lismore) to access relevant documents. Submissions may also be lodged at this site in the electronic tender box.

Details contained in the documents include background information for the project, the scope of works, details of the tender process, selection criteria, drawings, specifications and schedules.

If you experience any difficulties with accessing the above website or require further information, please phone the Tenderlink helpdesk on **1800 233 533**.

## Pesticide notification

Roads staff will be spraying Weed Master Duo Group M herbicide in late October and early November 2014 along the lip of the kerb and gutter in the village of Dunoon.





# T2014-18 DISPOSAL OF COUNCIL VEHICLES

Council is disposing of the following vehicles/plant by tender:

- 1 x Isuzu SX 4x4 dual cab ute.**
- 2 x Isuzu LSM 4x4 dual cab utes.**
- 1 x Toyota Hilux SR 4x4 dual cab ute.**
- 1 x Subaru Forester.**
- 2 x Hyundai i30 (SX Wagon and SLX Sedan).**
- 1 x Hyundai Santa Fe.**
- 1 x Holden Cruze.**

Vehicles will be available for inspection (sorry, no test drives) from 10am to 1pm on Monday, 10 November at the Revolve Shop carpark, located at the Lismore Recycling & Recovery Centre, 313 Wyrallah Road, East Lismore.

A bid sheet will be available on the day. Submissions will only be accepted in writing and should be placed in the Tender Box at our Corporate Centre.

**Tender submissions close at 2pm on Friday, 14 November 2014.**





# DEVELOPMENT CONSENTS ISSUED

## ENVIRONMENTAL PLANNING AND ASSESSMENT ACT

In accordance with the provisions of Section 101 of the Act and Clause 124 of the EP&A Regulation, notification is given that the developments listed below have recently been granted consent.

### DA No.

**14/66-2 1494 Bangalow Road, Clunes**

Section 96(1A) modification to consent conditions 2, 16 and 17.

**14/93 15 Simeoni Drive, Goonellabah**

Change of use from commercial office premises to Aldi Food Store with associated alterations and additions including signage.

**14/126 45 William Blair Avenue, Goonellabah**

Medium density development, 5x2 storey detached dwellings with associated landscaping and strata title subdivision.

**14/187-2 1 Baldock Drive, McLeans Ridges**

Section 96(1A) modification to amend position of pool and to have a landscaped embankment in lieu of a retaining wall.

**14/188 58 Nielson Street, East Lismore**

Dwelling addition (covered deck and new carport with building line variation to 0m to Nielson Street).

**14/223 12 Esyth Street, Girards Hill**

Dwelling addition (new decks).

**14/227 346 and 348 Keen Street, East Lismore**

Subdivision (boundary alteration).

**14/230 5 Janice Court, Bexhill**

Shed.

**14/234 137 Blade Road, Nimbin**

Conversion of existing studio to create a detached dual occupancy.

**14/238 680 Boatharbour Road, Eltham**

Inground swimming pool and deck.

**14/246 258 Cameron Road, McLeans Ridges**

Dwelling alterations and additions.

**14/251 21 Clyde Street, Lismore**

Dwelling addition (carport) and shed.

**14/254 313 Wyrallah Road, Monaltrie**

Storage shed.

**14/258 10 Hillcrest Avenue, Goonellabah**

Dwelling additions and alterations.

**14/264 82 Trinity Drive, Goonellabah**

Strata subdivision (to create 2 lots).

**14/265 145 Laurel Avenue, Lismore**

Construction of an awning over the existing children's play area adjacent to the north elevation of the existing building.

**14/270 23 Highland Crescent, Goonellabah**

Shed.

**14/276 122 Mountain View Drive, Goonellabah**

Awning.

**14/285 18 Greenhills Drive, Goonellabah**

Inground swimming pool.

**14/287 189 Leycester Road, Leycester**

Farm shed.

**Details of applications and consents, together with conditions attached, are at Corporate Centre and at [www.lismore.nsw.gov.au](http://www.lismore.nsw.gov.au).**

## **DEVELOPMENT PROPOSALS**

### **ENVIRONMENTAL PLANNING AND ASSESSMENT ACT**

**As the consenting authority, Council has received the following development applications (and/or applications for modifications to existing consents) for consideration.**

**DA No. 14/306**

**LOCATION/DP LOT:** 73 Krauss Avenue, Loftville (DP 1093668, Lot 8).

**APPLICANT:** Newton Denny Chapelle.

**DESCRIPTION:** Emergency services facility (Westpac Rescue Helicopter Service) incorporating on-site parking, earthworks, landscaping, civil works and placement of an above-ground fuel storage tank, including the subdivision of the existing lot to create an additional allotment.

**CLOSING DATE:** 12 November 2014.

**The above development applications and Statement of Environmental Effects may be inspected at our Corporate Centre or at [www.lismore.nsw.gov.au](http://www.lismore.nsw.gov.au).**

**Further information relating to written submissions is available on our website. There are laws regarding the mandatory disclosure of political donations in relation to planning matters. Political donations disclosure reporting forms are available at [www.planning.nsw.gov.au](http://www.planning.nsw.gov.au).**



# ON EXHIBITION

## PLANNING PROPOSAL

### PINEAPPLE ROAD PRECINCT REZONING

Council resolved to support a planning proposal for the rezoning of the Pineapple Road Precinct at its ordinary meeting of 12 February 2013 in accordance with the Environmental Planning and Assessment Act 1979.

The Department of Planning and Environment issued a Gateway Determination (conditional approval) in February 2013. An amended Gateway Determination was issued in October 2014.

The site that is the subject of the proposal is detailed in the table below.

Street address	Cadastral description	Area (ha)
97 Pineapple Road, Goonellabah	Lot 2 DP 1064627	99.8
88 Pineapple Road, Goonellabah	Lot 8 DP 253464	50.5
34 Pineapple Road, Goonellabah	Lot 101 DP 594434	14.1
471 Bruxner Highway, Goonellabah	Lot 11 DP 810542	1.7
425 Richmond Hill Road, Richmond Hill	Lot 12 DP 810542	38.1
463 Bruxner Highway, Goonellabah	Lot 13 DP 810542	2.0
425A Richmond Hill Road, Richmond Hill	Lot 1 DP 1136812	1.6
		<b>Total: 207.8</b>

The site is currently within Zone RU1 Primary Production. It is proposed to rezone approximately 90 hectares of the site to Zone R1 General Residential and 10 hectares to Zone R5 Large Lot Residential.

It is proposed to apply a minimum lot size of 400m<sup>2</sup> to Zone R1 General Residential and 2500m<sup>2</sup> to the Zone R5 Large Lot Residential. Lot sizes ranging from 40ha to 2ha are proposed for the remaining Zone RU1 Primary Production land.

It is proposed to apply a maximum building height of 8.5m to Zones R1 and R5.

The planning proposal to amend LEP 2012 is exhibited for public comment from 29 October to 28 November 2014. Copies of the draft amendment are available at our Corporate Centre and at [www.lismore.nsw.gov.au](http://www.lismore.nsw.gov.au). Submissions relating to the draft amendment (outlining grounds for objection or support) should be emailed to [council@lismore.nsw.gov.au](mailto:council@lismore.nsw.gov.au) or mailed to the **General Manager, Lismore City Council, PO Box 23A, Lismore NSW 2480**. For enquiries, please contact our Senior Strategic Planner Greg Yopp on **1300 87 83 87**.

**Submissions must be received by close of business on 28 November 2014.**

## POSITIONS VACANT

### We are fully online

We have recently moved to an online recruitment system and are no longer accepting hard copy applications.

If you don't have computer access at home, our public libraries provide public access computers that you can use. Please phone your local library to book a computer to avoid disappointment.

If you don't have email, you will need to establish an email account before you can register through our eRecruitment portal. If you are not confident you can complete this process, we recommend you visit your local library and ask if staff can assist.

Position Title	Salary	Closing Date
Manager Integrated Planning	The position has a total remuneration in the vicinity of \$130,000 (including salary, super and market allowance).	14/11/14
Senior Design Officer/ Engineer	\$66,837-\$76,863 + super	7/11/14

**For information or to apply, visit [www.lismore.nsw.gov.au](http://www.lismore.nsw.gov.au) or contact us on 1300 83 87 83.**



# SUMMARY OF FINANCIAL REPORTS

## FOR THE YEAR ENDED 30 JUNE 2014

Notice is hereby given that at the Council meeting on Tuesday, 11 November 2014 the audited Financial Reports and the Auditor's Report for the period ended 30 June 2014 will be presented to the public.

**A summary of the Financial Reports is outlined below.**

<b>Item</b>	<b>2013/14 (\$,000)</b>	<b>2012/13 (\$,000)</b>
<b>Income Statement</b>		
Total income from continuing operations	100,749	103,142
Total expenses from continuing operations	97,203	102,039
Operating result from continuing operations	3,546	1,103
Net operating result for the year	3,546	1,103
Net operating result before grants and contributions provided for capital purposes	(6,390)	(7,758)
<b>Statement of Financial Position</b>		
Total current assets	50,698	54,374
Total current liabilities	(19,954)	(22,048)
Total non-current assets	1,171,972	1,178,678
Total non-current liabilities	(48,503)	(49,035)
Total equity	1,154,213	1,161,969
<b>Other Financial Information</b>		
Operating performance ratio	-5.00%	-7.18%
Own source operating revenue ratio	80.58%	77.16%

Unrestricted current ratio	1.72:1	1.68:1
Debt service cover ratio	2.25	2.93
Rates, annual charges, interest and extra charges outstanding percentage	11.45%	11.62%
Cash expense cover ratio	4.65	5.09
Building infrastructure renewal ratio	76.67%	71.31%
External borrowings	47,746	49,549
Internal b	5,780	6,295

In accordance with Section 420 of the Local Government Act 1993, any person may make a submission to Council regarding the audited Financial Reports or the Auditor's Report for Lismore City Council for the year ended 30 June 2014.

**Submissions close Tuesday, 18 November 2014 at 4.30pm.**

Submission must be in writing and addressed to the General Manager, Lismore City Council, PO Box 23A, Lismore NSW 2480 or may be emailed to [council@lismore.nsw.gov.au](mailto:council@lismore.nsw.gov.au).

A copy of the audited reports is available for inspection at our Corporate Centre and on our website [www.lismore.nsw.gov.au](http://www.lismore.nsw.gov.au).

**For enquiries or further information phone John Hartley or Amanda Binney on 1300 87 83 87.**

## YOUR COVER

This little lady's name is Rocky, and she's a five-month-old Suri alpaca. She lives at Mangowood Farm Alpacas in Lillian Rock and is one of several who visited Lismore Show, delighting young and old with cuteness and personality. Barbara Ransby and Bruce Porter have owned Mangowood since 2005 and have around 60 alpacas on the farm. Barbara describes them as "heavenly animals". Bruce described them as something else, but we promised not to say.





CONTACT US:  
**1300 87 83 87**

Lismore City Council's Corporate Centre is located at 43 Oliver Avenue, Goonellabah. We are open Monday to Friday from 8.30am to 4.30pm. Our postal address is PO Box 23A, Lismore NSW 2480. You can email us at [council@lismore.nsw.gov.au](mailto:council@lismore.nsw.gov.au)



Find us on Facebook and YouTube or follow us on Twitter!



Local Matters is printed fortnightly on ENVI Australian-made, 100% carbon-neutral paper.