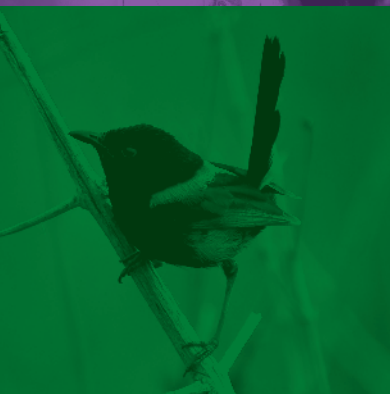




LOCAL MATTERS

LISMORE CITY COUNCIL NEWS
ISSUE 27, 21 JANUARY 2015



WWW.LISMORE.NSW.GOV.AU



ONLINE SURVEY HELPS HEALTH WORKFORCE PLANNING

Lismore City Council is asking people to complete a short, anonymous online survey to help Council work towards ensuring the region has an adequate health workforce into the future.

Council has recently partnered with St Vincents Private Hospital and North Coast Medicare Local to host a workshop in March to discuss health workforce challenges in the region from Grafton to Tweed and west to Bonalbo/Tabulam.

The health sector is the biggest employer in the Lismore area but many factors are changing the local health landscape and its workforce, including an ageing population and employees looking towards retirement.

Information from the anonymous survey will be used as case studies at the March workshop, which will focus on finding solutions for overcoming a potential future shortfall in health sector workers.

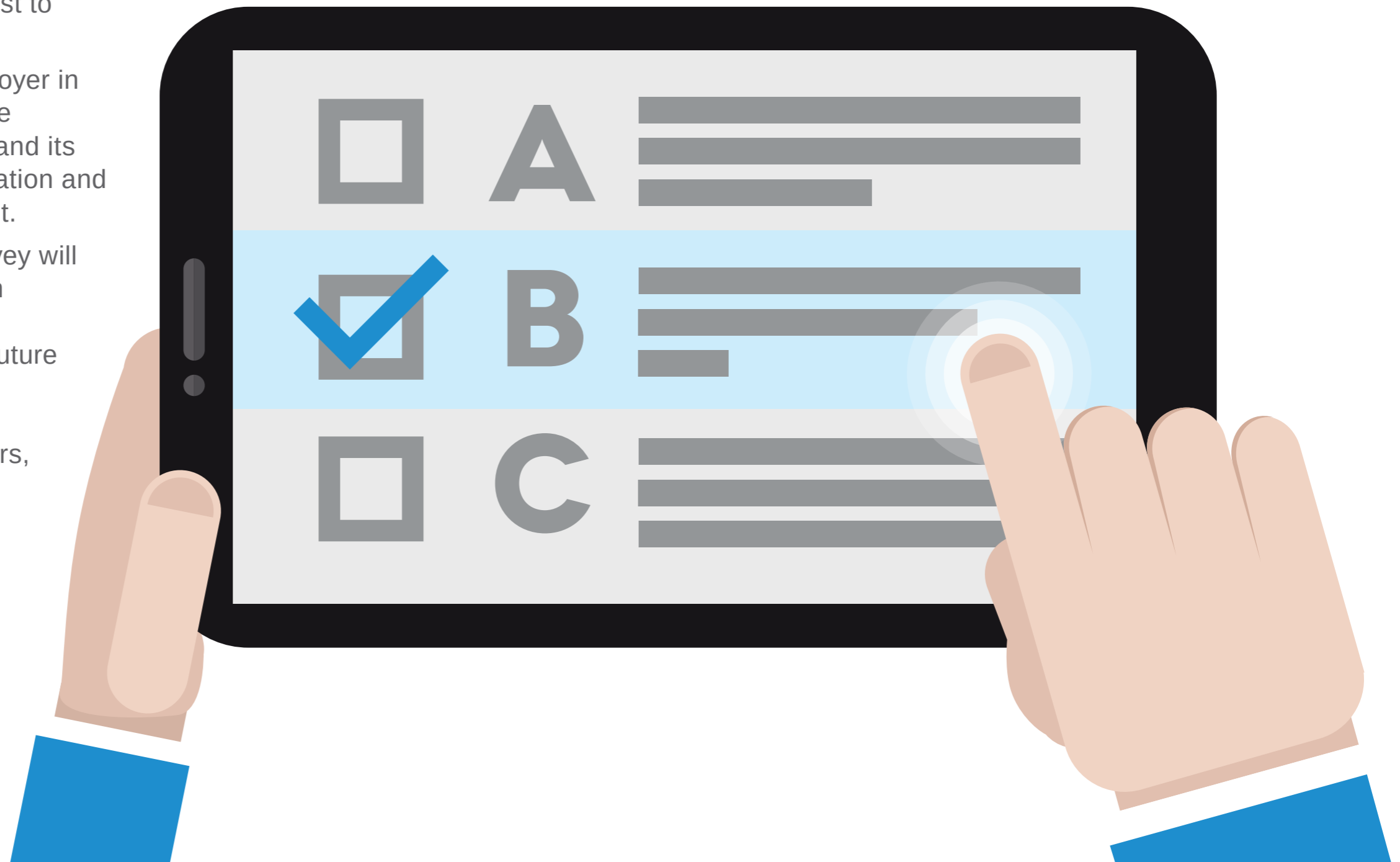
The workshop will include regional stakeholders such as health employers, educators, trainers, employment agencies, consumers, employees and jobseekers.

Council is looking for students, jobseekers, employees, contractors and people who have left the workforce in the last 12 months to participate in the survey. It is important that the views of people seeking work are represented in

the workshop process alongside those of employers and training organisations.

The survey takes no longer than 10 to 15 minutes to complete. People are welcome to leave their details should they wish, and go into a draw to win \$100 cash.

To complete the survey, visit
<https://www.surveymonkey.com/sl/healthworkforcedevelopment>.



STALLHOLDERS WANTED FOR RECYCLED MARKETS

Council would like to build a new market complex at the Lismore Revolve Shop on Wyrallah Road but needs to ensure there is enough interest from potential stallholders for a viable, bustling market.

It is proposed that the Recycled Markets include 20-foot air conditioned shipping container stall spaces that operate primarily on a Saturday. The spaces would be available for other days in the week but the concept is to make a Saturday market the public focus.

We are looking for enthusiastic and committed stallholders and businesses to be part of a new concept called the Recycled Markets.

Saturday has become a big day at the Revolve Shop with over 200 vehicles entering the site to dispose of waste materials, so staff are confident there is plenty of potential trade.

Council wishes to continue value-adding and creating new events and facilities at the Lismore Recycling & Recovery Centre to create the best recycling and sustainability complex of its kind in Australia. It is part of Council's broader vision to make Lismore a model of sustainability.

Council is now calling for expressions of interest from individuals or businesses that sell recycled or reused products and would like to be part of the new Recycled Markets.

To find out more or register your interest, phone 1300 87 83 87.





FREE MYROADINFO APP READY TO DOWNLOAD

We have this week released our brand new, 100% free MyRoadInfo app for iPhones and Android devices.

The MyRoadInfo website was developed by NOROC (Northern Rivers Regional Organisation of Councils) in 2010 as an online information hub listing road closures and delays due to accidents, storms or rising floodwaters.

MyRoadInfo includes the latest updates from councils and the RMS so residents have localised knowledge at their fingertips to make sensible decisions on the road.

The app's most exciting feature, which is not available on the website, is an automatic notification system. Using the 'favourites' function, residents are able to nominate 10 favourite roads and then receive automatic notifications should accidents, storms or flooding occur.

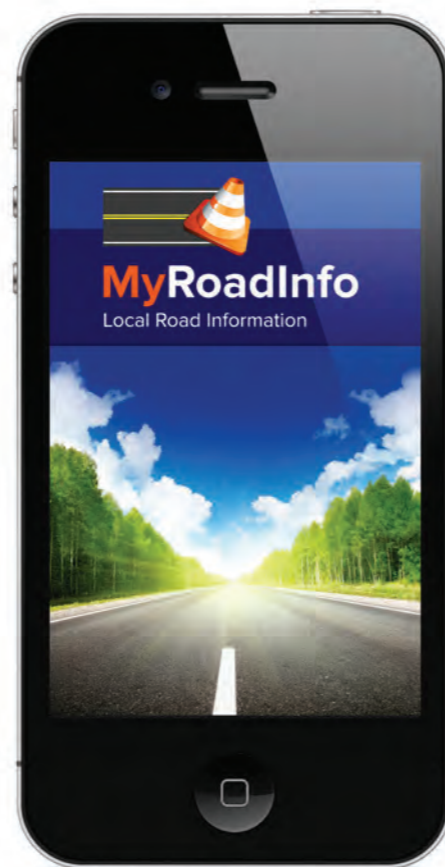
The number one aim is to get people safely from A to B.

MyRoadInfo was developed following a particularly severe flood in 2009 that inundated the Northern Rivers and highlighted the need for a service that bridged council boundaries.

MyRoadInfo won an R.H. Dougherty Award in 2013 and in February 2014 was awarded the Government Communications Australia national award for 'best crisis communications'.

You can download the MyRoadInfo app via the App Store for iPhones or the Google Play Store for Android devices. If you wish to download the app on an iPad, search for iPhone apps in the App Store.

If people or property are at risk, phone the SES immediately on 132 500. If you are in an emergency situation, always phone 000.



COMMUNITY PANELS COMING TO YOU

In our last couple of issues of *Local Matters* we have talked about the new Community Panels project coming to rural communities over the next 18 months.

We have advertised the first Community Planning Days coming up and want to clarify that this is just the start of the process – don't worry if you haven't seen your village or hamlet advertised as yet. Every rural community will be asked to have input as we move systematically through the Lismore Local Government Area (LGA).

We have split up the LGA into seven distinct 'areas' and over the next 18 months we will hold two Community Planning Days in each area. We will ask local residents for ideas about community-based projects they wish to undertake and create 'Community Plans' based on this feedback. We will then establish Community Panels of enthusiastic locals who wish to oversee the implementation of projects.

The success of the project depends on enthusiastic and passionate people joining the process. Details of the first meetings are below.

- ▶ **The Community Planning Days for The Channon, Terania Creek, Tuntable Creek, Koonorigan and Keerrong communities are as follows:**

Planning Day One

Where: The Channon Hall
When: 31 January 2014
RSVP: Due now!

Planning Day Two

Where: Koonorigan Hall
When: 28 February 2015
RSVP: 9 February 2015

- ▶ **The Community Planning Days for Wyrallah, Tregeagle, Lindendale, Monaltrie, Marom Creek, Tucki Tucki, Tuckurimba, North Woodburn, Green Forest and Buckendoon communities are as follows:**

Planning Day One

Where: Wyrallah Hall
When: 14 February
RSVP: 2 February

Planning Day Two

Where: Tregeagle Hall
When: 7 March
RSVP: 20 February

All Community Planning Days start at 9.30am for 10am and finish at 3.30pm. People are asked to bring lunch or a plate to share on the day. **To register, phone Lizette Twisleton or Casie Hughes on 1300 87 83 87.**



AUSTRALIA DAY AWARDS 2015

Lismore will be honouring exceptional citizens as well as welcoming 39 new Australians during the 2015 Australia Day Awards ceremony on Monday, 26 January.

Those taking part in the Citizenship Ceremony come from countries as diverse as India, Canada, Cambodia, the Philippines, Zimbabwe, Rwanda, Nepal, the Netherlands, China, Italy and Kenya.

Meanwhile, 10 outstanding people who have made significant contributions to the community, or excelled in some way personally or professionally, will receive Australia Day Awards from this year's Australia Day Ambassador, Clyde Campbell.

Clyde is the grandson of former Lismore Mayor Clyde Campbell. He is also a successful Sydney businessman who was diagnosed with Parkinson's disease at age 44. He will share his story about dealing with his prognosis and establishing the Shake It Up Foundation to raise funds for Parkinson's research.

Australia Day celebrations are always held in the morning so people can still enjoy afternoon barbecues or trips to the beach with family and friends.

The Australia Day Awards ceremony is on Monday, 26 January at the Goonellabah Sports and Aquatic Centre. It begins at 8.30am and everyone is welcome.



REMEMBER TO COMMENT ON BIODIVERSITY STRATEGY AND PROPOSED RATE INCREASE

Time is fast running out for people to have their say on the draft Biodiversity Management Strategy (BMS) and proposed Special Rate Variation.

Residents have until 24 February to make a submission about the content of the draft BMS and voice their opinion on a proposed rate increase to fund its implementation.

In essence, the BMS aims to deliver cleaner roadsides; assist landholders and community groups to manage pests and weeds; assist management of bushland and riversides on rural land; provide more opportunities to get involved through community events, workshops and field days; provide well-managed urban bushland reserves; and provide more recreational opportunities in the urban area, such as walking tracks.

In conjunction with the BMS exhibition period, Council is holding community consultation into a proposed \$500,000 per annum Special Rate Variation to fund the implementation of the strategy.

The proposed rate increase would apply to three rating categories – Residential, Rural Residential and Farmland.

The BMS and details on the proposed rate increase can be viewed at www.lismore.nsw.gov.au or in hardcopy at Council's Corporate Centre, 43 Oliver Avenue, Goonellabah, during normal business hours Monday to Friday from 8.30am to 4.30pm.

Submissions can be made online, posted to the General Manager, Lismore City Council, PO Box 23A, Lismore NSW 2480 or emailed to council@lismore.nsw.gov.au. Submissions should state reasons for objection or support.



DEVELOPMENT CONSENTS ISSUED

ENVIRONMENTAL PLANNING AND ASSESSMENT ACT

In accordance with the provisions of Section 101 of the Act and Clause 124 of the EP&A Regulation, notification is given that the developments listed below have recently been granted consent.

DA No.

02/771-3 35 and 54 Just Street, Goonellabah

Section 96(1A) modification to permit bulk earthworks on Lots 33-38 and 67-71 and for gravity paced rock retaining walls upon lots 35, 38, 37, 68 and 69. The filling of lots 63-65 and stockpiling of excess fill material on Pauline Place and Tamai Place for future road construction purposes.

09/130-2 160 Wyrallah Road, East Lismore

Section 96(1A) modification to delete condition 27 pertaining to Section 88B.

09/424-2 22 Williams Road, Corndale

Section 96(2) modification to add storeroom and remove lower level including dance studio, rumpus room, two bedrooms and bathroom.

14/102-2 8 Bruxner Highway, South Lismore

Section 96(1A) modification to condition 20 pertaining to floor level of approved nursery area, to the shade sails over nursery area and a new nursery entry canopy.

14/153-2 243 Oliver Avenue, Goonellabah

Section 96(1A) modification to dimensions of shed and to delete condition 30 pertaining to a concrete footpath.

14/198 22 Carramar Drive, Goonellabah

Dwelling and removal of trees.

14/226-2 67 Minyon Falls Road, Repentance Creek

Detached dual occupancy.

14/243 40 and 5/40 Three Chain Road, South Lismore, and 161 Bruxner Highway, Loftville

Use of an existing aircraft hangar as a skydive school including associated signage and the use of airport precinct as a skydive drop zone.

14/282 23 Boatharbour Road, Richmond Hill

Dwelling.

14/300 425 Richmond Hill Road, Richmond Hill

Dwelling with a building line variation to 10m to Pineapple Road.

14/305 40, 3/40 and 17/40 Three Chain Road, South Lismore

Boundary adjustment of two lots (Lot 21 DP 1122783 and Lot 204 DP 1180961) to create two modified lots and the construction of two aircraft hangars on one of the boundary adjusted lots (being Lot 25, 1595m²).

14/305-2 40, 3/40 and 17/40 Three Chain Road, South Lismore

Section 96(1A) modification to delete conditions 3, 4 and 5 of existing consent.

14/306 73 Krauss Avenue, Loftville

Subdivision of land into two lots, being proposed Lot 81 (6255m²) and proposed Lot 82 (1.309ha) and the erection of an emergency services facility (Westpac Rescue Helicopter Service) and associated on-site parking, earthworks, landscaping, civil works and placement of an aboveground fuel storage tank on proposed Lot 82.

14/312 5 Centenary Drive, Goonellabah

20 mini self-storage sheds, perimeter fencing, carparking and associated infrastructure.

14/314 232 Keen Street and 16 Ballina Road, Lismore

Installation of new underground fuel storage tank, removal of existing dispensers and replacement with new.

14/316 109 and 109A Alexandra Parade and 2, 24 and 24A Dunoon Road, North Lismore

Temporary event – Tropical Fruits Festival (New Year's Eve and New Year's Day dance party from 31/12/14 to 1/1/15).

14/318 54 High Street, Lismore Heights

Covered deck.

14/320 2 Bruxner Highway, South Lismore

Subdivision (to create three lots).

14/321 102 Buckendoon School Lane, Buckendoon

Farm shed.

14/328 6 Renwick Street, Lismore Heights

Change of use of a building to a home business (massage and body therapy).

14/333 173 Cameron Road, McLeans Ridges

Dwelling alterations (to construct a rumpus room with toilet and shower underneath existing dwelling).



BRIEFS

Revolve Shop volunteers wanted!

Lismore City Council is looking for enthusiastic and committed volunteers to assist at the Lismore Revolve Shop, located at the Lismore Recycling & Recovery Centre in East Lismore.

Volunteers are being sought to undertake cleaning, customer service and stock packing duties. There is potential for volunteers to be trained in other aspects of the Revolve Shop's operation in time.

If you are interested in volunteering, phone us on 1300 87 83 87.

Little League baseball comes to Lismore in 2015

Lismore will host the 2015 Little League National Championships from 4-9 June at the Albert Park baseball complex.

Far North Coast Baseball and Lismore City Council have been keen to bring the tournament to Lismore for some time as it represents a huge influx of people to the city in what is traditionally a quiet time of year.

The 2015 Little League National Championships will feature 20 All-Star Little League teams from across Australia competing over a six-day tournament, with the winning team qualifying for the Little League World Series in Pennsylvania, USA.

Little League is the world's largest youth sports program and 2015 marks the ninth year that Australia has been a part of the chartered Little League family.

The event is expected to bring more than 770 visitors from outside the region to Lismore and inject more than \$600,000 into the local economy.

Pesticide notification

Council will be spraying Weed Master Duo Group M Herbicide and Grazon during January and February at Skyline Road for the control of roadside growth as well as at Gundurimba Road and Riverbank Road for the control of Indian Coral Trees.

14/335 29 Cathcart Street, Girards Hill

Storage shed and carport.

14/338 6 Oakley Avenue, East Lismore

Dwelling addition (new family room).

14/339 26 Dibbs Street and 7, 9, 11 and 15 Gardner Avenue, Lismore

Demolition of existing buildings and structures.

14/341 5 Beaumont Drive, East Lismore

Dwelling addition (covered patio).

14/342 12 Myra Avenue, Goonellabah

Dwelling addition (covered patio).

14/345 138 Oliver Avenue, Goonellabah

Dwelling addition (living areas and garage).

14/353 56 Trinity Drive, Goonellabah

Dwelling addition (covered area) and shed.

14/354 30 Gum Tree Drive, Goonellabah

Dwelling addition (covered patio).

14/356 12 Palmvale Drive, Goonellabah

Replace and extend existing retaining wall and new carport with a building line variation to 2.6m to Palmvale Drive.

14/358 6 Denbos Crescent, East Lismore

Construction of driveway, two decks and enclose carport to create a garage.

14/361 60 Cross Road, Numulgi

Farm shed with concrete apron.

14/365 27 Pineapple Road, Goonellabah

Education addition (accessible unisex toilet and change facility).

14/366 45 Elliott Road, South Lismore

Shed and carport addition to dwelling with a building line variation to Elliott Road.

Details of applications and consents, together with conditions attached, may be inspected at Council's Corporate Centre during business hours or via DA Tracking at www.lismore.nsw.gov.au.



MEETINGS, BRIEFINGS AND INTERVIEWS

There are many ways to engage with Council and Councillors. We encourage people to attend our meetings and briefings to stay up-to-date with the many issues affecting our Local Government Area. You can also book in for a Councillor interview to speak directly with your elected representatives.

AFTER HOURS COUNCILLOR INTERVIEWS

Councillors are available for interviews on the first and third Monday of each month from 5.30pm at the Goonellabah Sports and Aquatic Centre.

Residents are invited to book in to discuss community issues with their elected representatives. Two Councillors attend the night on a roster.

On Monday, 2 February interviews will be conducted by Councillors Simon Clough and Graham Meineke. Interviews must be booked no later than 4pm on Friday, 30 January.

COUNCILLOR BRIEFINGS

Councillor briefings are held most Tuesday evenings so staff can provide background on issues or projects and Councillors have a chance to brainstorm and discuss.

On Tuesday, 3 February Councillors will be briefed on:

- **Crime Prevention Plan.**
- **South Lismore Sewage Treatment Plant investigation.**
- **Councillor/staff interactions.**

Briefings are held in the Council Chambers from 6pm. All welcome.

Council meetings are held on the second Tuesday of every month excluding January. The first ordinary Council meeting of Lismore City Council will be held on Tuesday, 10 February.

Reports include:

- **Review of Market and Temporary Events Policies.**
- **South Lismore Sewage Treatment Plant proposed upgrade.**
- **Sale of land at Lismore Airport.**
- **4 Year Plan update 2013-2017.**
- **Annual Community Grants Scheme Policy.**

Held in the Council Chambers from 6pm. All welcome.

For more information about meetings and briefings or to book a Councillor interview, phone Graeme Wilson on 1300 87 83 87.

YOUR COVER

We have been overwhelmed by the response to our announcement of nine new traineeships with Council for Aboriginal and Torres Strait Islander people, with more than 100 locals attending a recent information session.

The nine new traineeships are being offered as part of Council's Aboriginal Employment Strategy, which aims to increase Aboriginal employment at Council to six per cent by 2017. This figure reflects the proportion of Lismore's workforce that is Aboriginal and Torres Strait Islander.

The Aboriginal Employment Strategy is part of our Reconciliation Action Plan (RAP), which is designed to increase equality for local Aboriginal people and involve Aboriginal people in Council's decision making. This includes recently establishing an Aboriginal Advisory Group.

Ours is the first RAP adopted by a council in the Northern Rivers. We are soon to embark on a new project called Embracing the RAP, which provides a model for other councils, agencies and businesses to create their own Reconciliation Action Plan.





CONTACT US:

1300 87 83 87

Lismore City Council's Corporate Centre
is located at 43 Oliver Avenue, Goonellabah.

We are open Monday to Friday from 8.30am to 4.30pm.
Our postal address is PO Box 23A, Lismore NSW 2480.

You can email us at council@lismore.nsw.gov.au



Find us on Facebook and
YouTube or follow us on Twitter!



Local Matters is printed fortnightly
on ENVI Australian-made, 100%
carbon-neutral paper.