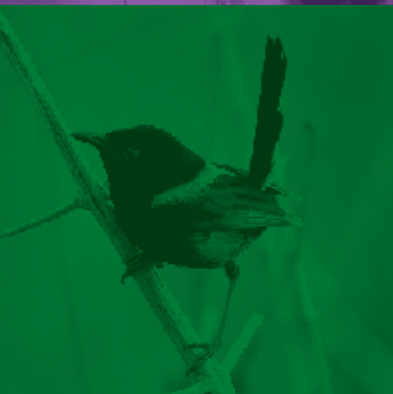




LOCAL MATTERS

LISMORE CITY COUNCIL NEWS
ISSUE 42, 19 AUGUST 2015



WWW.LISMORE.NSW.GOV.AU



CREATE A BACKYARD BIG SCRUB SANCTUARY

Host of ABC's *Gardening Australia*, Costa Georgiadis, will be at the Arts vs Science Festival this Saturday, 22 August, to impart his wisdom at a free gardening workshop.



The bad news is the workshop is now sold out. Tickets were snapped up super fast and the event reached capacity far earlier than we anticipated!

However... you might like to know that Costa is leading a riverbank tree planting at 8.30am on Saturday morning in

Riverside Park, prior to the Arts vs Science Festival opening at 10am at Lismore City Hall. More willing hands are always needed to put trees in the ground, and everyone is welcome to lend a hand and meet the man.

To coincide with Costa's visit, we have teamed up with Rous Water to run the Backyard Big Scrub Makeover: Landscaping for Water Quality Design Competition.

All homeowners throughout the Lismore Local Government Area are invited to redesign their backyard using Big Scrub rainforest plants and water quality landscaping techniques. Let your imagination run wild – how can you create a biodiversity haven in your backyard?

The winner will receive an amazing prize – \$1000 of landscaping supplies including plants, gravel etc, a \$1000 rainwater tank and a Rous Water bush regeneration team for one day to help make your design a reality.

Not only can you help improve the water flowing into our creeks and

eventually the Wilsons River, but you can also attract more wildlife and have a garden that is suited to our climate and rainfall patterns. All it takes is a little design flair and the major prize could be yours...

Entries for the Landscaping for Water Quality Design Competition close on 11 September. For entry forms and detailed guidelines on landscaping for water quality techniques and good plant choices, visit www.rouswater.nsw.gov.au or www.lismore.nsw.gov.au.



The friendly Rous Water team who will help transform your winning backyard design.

COUNCIL CALLS FOR MORE SHOP TOP HOUSING

Council recently approved a new development for CBD shop top housing and is encouraging other property owners to follow suit.

The development above Music Bizarre in Magellan Street will incorporate a one and two-bedroom unit as well as a dual-purpose space acting as a vinyl lounge and flood-free storage.

Deborah Ray from Music Bizarre said there is a lack of single-person accommodation in Lismore and having more people living in the CBD would breathe more life into the city.

“I think shop top housing is a really good use of space – let’s fill the empty spaces above CBD shops with people. Having people living in the city centre makes the CBD a safer and livelier place, plus it’s convenient for some people, like those without transport. It’s not everybody’s cup of tea, but for the right people, it’s a great lifestyle choice.”

The Lismore Housing Strategy identified CBD housing would provide much-needed housing choice as family structures change and people move away from the traditional three-bedroom home.

Earlier this year Council brought together a focus group to look at barriers and issues related to shop top housing. The three main obstacles identified were carparking, contributions and fire regulations.

Council has now waived the carparking and Section 94 and 64 developer contributions for shop top housing and will work with property owners closely to meet fire regulations, which can be quite complicated.

Council is developing an education brochure for property owners thinking of redeveloping CBD buildings as shop top housing. In the meantime, anyone interested in pursuing shop top housing should phone **Economic Development Manager Mark Batten on 6625 0458.**

Council's Executive Director Sustainable Development Brent McAlister with Music Bizarre owner Deborah Ray, who is building shop top housing above her Magellan Street business.



COUNCIL DECIDES...

At the ordinary meeting of 11 August, Council decisions included the following:

- Council resolved (6/2 in favour with three absent) to approve a development application for a funeral home in the old Gundurimba building at 59 Magellan Street, Lismore. The development was approved with no chapel or funeral services allowed on site. The approved funeral home will include a mortuary, viewing rooms and offices.
- Council resolved (9/1 with one absent) to support a planning proposal to amend the land zoning in the Lismore Health Precinct to enable more medium density housing and mixed use developments. It also includes provision for increased building heights from nine to 16 metres in core areas of the precinct to enable buildings up to five storeys high. Council also resolved to amend the Lismore Development Control Plan to provide design guidelines that ensure good quality new development and minimise impacts on neighbouring properties. Council also supported a waiver of Section 94 and 64 developer contributions to support medium density housing within the precinct. Council will request a Gateway determination from the Department of Planning and Environment. If successful, all three proposals will be placed on public exhibition.
- Council resolved (10/1 in favour) to allow blasting at Ruthven Quarry. The determination allows up to five blasts per year and includes conditions that there be monitoring of the koala population before and during blasting events with regular compliance auditing reported back to Council.

A complete list of Council resolutions can be viewed at www.lismore.nsw.gov.au.

Dispelling roadwork rumours

We have been hearing much talk about the works on the Lismore to Bangalow Road and a persistent rumour that glass sand has been used in the roadworks and this is sticking to people's cars. We just wanted to let people know that NO glass sand has been used in any of the roadworks along Bangalow Road. We felt it was important to clear up this misconception.



IMMERSE YOURSELF IN ARTS IN AUGUST



Don't forget to enjoy Arts in August events before the month is out!

If you haven't indulged in any art activities yet there's still plenty of time to be part of some exciting and interactive events over the next two weeks. For a full program visit www.artsinaugust.com.au.

Some of the highlights include:

Lismore Arts & Retro Tour

Join local fashionista and tourism professional Monique Hope to experience some of the arts and retro Lismore CBD has to offer.

Saturday, 22 August

Lismore CBD, 10am-12pm, \$5 tour/\$12 tour and morning tea

Bookings essential. Phone 02 6626 0100.

Arts vs Science Festival

The second annual Arts vs Science Festival celebrates science, creativity and sustainability with lots of fantastic activities for young and old. This year it incorporates the Big Scrub Rainforest Day and there's even a visit from Costa Georgiadis (see above).

Saturday, 22 August

Lismore City Hall, 10am-4pm.

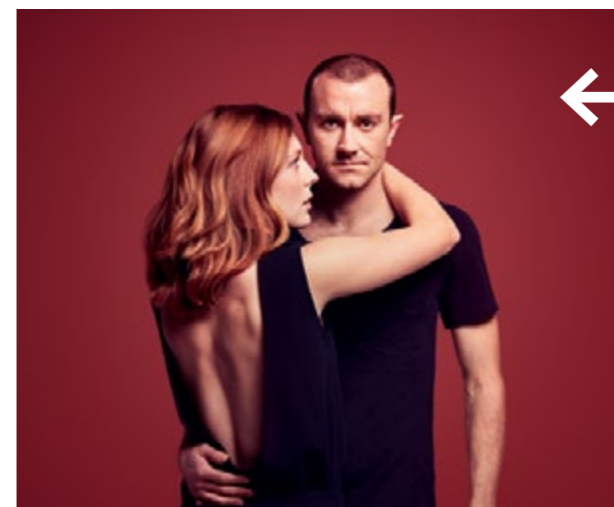
Historic Interest Walk

From art nouveau and continental secession architecture to a pub fit for a queen! Discover the hidden and fascinating secrets of Lismore's history and culture with historian Robbie Braithwaite from the Richmond River Historical Society.

Saturday, 29 August

Lismore CBD, 9-11am, \$5 tour/\$12 tour and morning tea.

Bookings essential. Phone 02 6626 0100.



Hamlet – Bell Shakespeare

NORPA presents the Bell Shakespeare production of Hamlet, the famous story of family intrigue.

29 and 31 August

Lismore City Hall, Sat 29 at 7.30pm

and Mon 31 at 11am and 7.30pm, \$22-49.

Bookings 1300 066 772 or

norpa.org.au/events/hamlet.

RURAL LANDHOLDERS WANTED FOR NEW INCENTIVE SCHEME

Lismore City Council is inviting rural landholders to a free information session on the new Rural Landholder Initiative where landholders can learn how to apply for \$5000 of on-ground works.

The Rural Landholder Initiative is part of Council's Biodiversity Management Strategy and is designed to conserve biodiversity hotspots on private land through education and incentives.

The project has been funded by a \$100,000 grant from the NSW Environment Trust and a cash contribution of \$50,000 from Council for landholder incentives.

This fund will be used to help landholders achieve practical outcomes including weed control, stock fencing and tree planting. These works will help rehabilitate degraded habitats and protect threatened species.

Council will also produce a range of education materials on the major environmental issues for five landholder types: beef grazers, dairy farmers, orchardists (e.g. macadamia growers), floodplain croppers (e.g. sugar cane growers) and 'lifestyle' landholders (e.g. non-commercial rural landholders).

Council's new Rural Landholder Initiative Extension Officer Kate Steel said the program would help landholders improve natural ecosystems, which in turn supports improved agricultural production.

"The Rural Landholder Initiative is a direct response to the 2012/13 *Imagine Lismore* community consultation process. The community rated the environment as the most important aspect of life in Lismore and it was the community's vision that Council provide environmental leadership," Kate said.

"We wanted to develop a program that was informed by landholders and of value to them as well as developing a program that drew on the experiences and lessons from other incentive programs around Australia."

The Rural Landholder Initiative was developed based on findings in Southern Cross University's *Incentives Report*, the result of a 12-month research project into the best ways to engage landholders through incentives.

Council is now seeking 10 landholders on active farms or hobby farms who will each receive materials and labour to the value of \$5000 for on-ground works.

Interested landholders are invited to attend an information night about the project and how to apply on Thursday, 27 August from 5.30-7pm at the Lismore Workers Club. Landholders can download an expression of interest form at www.lismore.nsw.gov.au. Applications close on 16 September.



Southern Cross University researcher Helen Smith and Lismore City Council's Rural Landholder Initiative Extension Officer Kate Steel and Senior Environmental Strategies Officer Theresa Adams.



DEVELOPMENT CONSENTS ISSUED

ENVIRONMENTAL PLANNING AND ASSESSMENT ACT

In accordance with the provisions of Section 101 of the Act and Clause 124 of the EP&A Regulation, notification is given that the undermentioned developments have recently been granted consent.

DA No.

15/38 60 Invercauld Road, Goonellabah
Extension to an existing dwelling.

15/99 26, 64, 88 and 90 Boundary Creek Road and 384 Back Creek Road, Bentley Subdivision (consolidation of five lots into two lots).

15/111 5 Funnell Drive, Modanville
Torrens title subdivision of one lot to create two lots.

15/127 15 Krauss Avenue, South Lismore
Removal of eight existing silos and replacement with six silos of equivalent storage capacity and the upgrade of press supply bins.

15/129 36A James Street, Dunoon
Covered deck.

15/152 5 Acacia Avenue, Goonellabah
Dwelling and retaining walls.

15/158 34 Federation Drive, Eltham
Convert garage to rumpus/guest room.

15/175 73 Hillcrest Avenue, Goonellabah
Dwelling and carport with a building line variation to 3m to Hillcrest Avenue.

15/177 766A Ballina Road, Goonellabah
Dwelling addition (deck) and extension to existing shed with a building line variation to 4.9m to Ballina Road.

Details of applications and consents, together with conditions attached, may be inspected at Council's Corporate Centre during business hours or via DA Tracking at www.lismore.nsw.gov.au.

DEVELOPMENT PROPOSALS

ENVIRONMENTAL PLANNING AND ASSESSMENT ACT

As the consenting authority, Council has received the following development applications (and/or applications for modifications to existing consents) for consideration.

DA No. 90/341-04

LOCATION AND DP LOT: 186A Keerrong Road, Blakebrook
(Lot 102 DP 817730).

APPLICANT: Newton Denny Chapelle.

DESCRIPTION: Section 96(2) modification to enable extension to the operating hours of the asphalt plant at Blakebrook Quarry.

CLOSING DATE: 2 September 2015.

The above development applications and Statement of Environmental Effects may be inspected at Council's Corporate Centre, 43 Oliver Avenue, Goonellabah or via DA Tracking at www.lismore.nsw.gov.au.

Further information relating to written submissions is available on Council's website. There are laws regarding the mandatory disclosure of political donations in relation to planning matters. Political donations disclosure reporting forms are available from the Department of Planning at www.planning.nsw.gov.au.

COMBINED PLANNING PROPOSAL/DEVELOPMENT APPLICATION

Pursuant to Section 57 of the Environmental Planning and Assessment Act 1979, Council has received the following planning proposal to amend the Lismore Local Environmental Plan 2012.

PLANNING PROPOSAL: Amendment No. 13.

LOCATION: Lot 182 DP 787249, 209 Bangalow Road, Howards Grass.

APPLICANT: Northern Rivers Surveying Pty Ltd.

DESCRIPTION: Rezone a section of the southern part of Lot 182 DP 787249 from RU1 Primary Production to R1 General Residential under the provisions of Lismore Local Environmental Plan 2012.

EXHIBITION PERIOD: 19 August to 16 September 2015.

Pursuant to Section 79A of the Environmental Planning and Assessment Act 1979, Council has received the following development application.

DEVELOPMENT APPLICATION: No. 2015/76.

LOCATION: Lot 182 DP 787249, 209 Bangalow Road, Howards Grass.

APPLICANT: Northern Rivers Surveying Pty Ltd.

DESCRIPTION: Subdivision (and boundary adjustment) to create two additional lots.

EXHIBITION PERIOD: 19 August to 16 September 2015.

Supporting documents can be viewed online at www.lismore.nsw.gov.au or at our Corporate Centre during normal business hours Monday to Friday from 8.30am to 10.30am. Staff are available to discuss the applications during office hours. Phone 1300 87 83 87 to make an appointment. It is highly recommended that people intending to make a submission review Council's detailed information about 'making a submission' on our website.



MEETINGS, BRIEFINGS AND INTERVIEWS

There are many ways to engage with Council and Councillors. We encourage people to attend our meetings and briefings to stay up-to-date with the many issues affecting our Local Government Area. You can also book in for a Councillor interview to speak directly with your elected representatives.

INFRASTRUCTURE ASSETS PANEL

The Infrastructure Assets Panel will meet on Monday, 24 August in our Council Chambers at 43 Oliver Avenue, Goonellabah, from 6pm.

COUNCILLOR BRIEFINGS

Councillor briefings are held most Tuesday evenings so staff can provide background on issues or projects and Councillors have a chance to brainstorm and discuss.

The agenda for the briefing on Tuesday, 25 August includes:

- Service Review Working Party.
- Farming the Sun.
- CCTV inspections of CBD sewer mains.

The briefing is in the Council Chambers from 6pm. All welcome.

AFTER HOURS COUNCILLOR INTERVIEWS

Councillors are available for interviews on the first and third Monday of each month from 5.30pm at the Goonellabah Sports and Aquatic Centre.

Residents are invited to book in to discuss community issues with their elected representatives. Two Councillors attend the night on a roster.

On Monday, 7 September interviews will be conducted by Councillors Greg Bennett and Isaac Smith.

Interviews must be booked no later than 4pm on Friday, 4 September.

For more information about meetings and briefings or to book a Councillor interview, phone Graeme Wilson on 1300 87 83 87.



REMEMBER TO REGISTER FOR SECOND HAND SATURDAY

If you've been contemplating a big spring clean why not register for Second Hand Saturday – the biggest day of garage sales on the North Coast on Saturday, 26 September.

Registrations to hold your own, a community or fundraising garage sale are now open online at www.secondhandsaturday.com.au or you can phone us on **1300 87 83 87**.

Each household that registers will have their garage sale address listed for free in the local paper and on the Second Hand Saturday website.

Second Hand Saturday is an opportunity to give unwanted belongings a second life and make some extra money. Coordinated by North East Waste and member councils, the aim of the event is to promote the reuse of goods and materials instead of disposal.

More than 800 garage sales were held across the region during Second Hand Saturday last year, and more registrations are expected in 2015. Will you join the fun?

For more information, go to the Second Hand Saturday website www.secondhandsaturday.com.au, like the Facebook page or contact Council.

NAMING OF ROAD IN SUBDIVISION – Myall Court

Roads Act 1993, Section 162, development application number 5.1998.7.2

Council received an application to name the new road in the plan of subdivision of DP 1169314 Lot 217, 9 Fredericks Road, Caniaba, as shown below:

Myall Court, Caniaba

Interested parties have 28 days to lodge any objection to this proposal. An objection should clearly state reasons for objection and be addressed to the General Manager, Lismore City Council, PO Box 23A, Lismore, NSW 2480.



RATES REMINDER

All Lismore ratepayers are reminded that your first rates instalment for the 2015/16 rateable year is due for payment on Monday, 31 August 2015.

POSITIONS VACANT

Position	Salary	Closing Date
Senior Development Assessment Officer (Planning)	\$1,315.00 (Grade 15 entry) to \$1,512.25 (Grade 15 step 4) per week plus super	Sunday, 23 August 2015
Partnering and Community Engagement Officer (Aboriginal)	\$1,315.00 (Grade 15 entry) to \$1,512.25 (Grade 15 step 4) per week plus super	Monday, 24 August 2015

For more information, visit www.lismore.nsw.gov.au.

WEED CONTROL NOTIFICATION

Whenever Council prepares to reseal an urban road, we also need to undertake maintenance in the street and treatment of weeds. We will always have signs in place advising of 'Spraying in Progress'.

From 17 August to 30 October 2015 the spray being used will be Weedmaster Duo. There is no withholding period for this product, which means it is safe to walk on or near straight after use.

If you have any concerns when work of this nature is happening near your home, please contact Stuart Wade. Or if you would like to discuss any urban roadworks project and the onsite supervisor is unavailable, you can phone our Urban Works Engineer **Dean Baldwin** on **1300 87 83 87**.



BALZER PARK PLAYGROUND COMES DOWN

Residents may have noticed that the old wooden playground at Balzer Park in Dunoon was recently removed.

We received a complaint and went out to take a look. The poor old thing was rather wobbly and when we checked it, while it wasn't in imminent danger of falling over, it did fail our safety inspection.

We are donating any decent timber leftover from the removal to the men's shed near the park.

Unfortunately there is no budget to replace the park but Council resolved (10/1 in favour) at its 11 August meeting to reclassify a small park in Cedar Drive, Dunoon, in preparation for sale. Following a recommendation from the newly formed North East Community Panel, Council has specified that the majority of funds from the sale of the Cedar Drive land must be used to upgrade Tamarind and/or Balzer Park.

We'll keep you posted on any developments at Tamarind and Balzer Park in future editions of *Local Matters*.

If you'd like to become involved in the new North East Community Panel (covering Dunoon, Dorroughby, Modanville, Numulgi, Tullera, Whian Whian and Woodlawn) visit www.lismore.nsw.gov.au or phone one of our Partnering and Community Engagement Officers on **1300 87 83 87**.

YOUR COVER

Deborah Ray owns Music Bizarre in Magellan Street and recently had a DA approved to convert the upstairs of her premises into shop top housing. Council is keen to see more shop top housing in the CBD and wants to work with developers to ensure they can meet fire and safety requirements. Council is also waiving carparking and developer contributions for those who wish to undertake shop top housing. More details inside.





CONTACT US:
1300 87 83 87

Lismore City Council's Corporate Centre is located at 43 Oliver Avenue, Goonellabah. We are open Monday to Friday from 8.30am to 4.30pm. Our postal address is PO Box 23A, Lismore NSW 2480. You can email us at council@lismore.nsw.gov.au



Find us on Facebook and YouTube or follow us on Twitter!



Local Matters is printed fortnightly on ENVI Australian-made, 100% carbon-neutral paper.