

LOCAL MATTERS

LISMORE CITY COUNCIL NEWS
ISSUE 51, 23 DECEMBER 2015



WWW.LISMORE.NSW.GOV.AU



LISMORE QUADRANGLE PROJECT RECEIVES MILLIONS IN FEDERAL FUNDING

Council will receive \$2.85 million from the Australian Government's Stronger Regions Fund for the Lismore Quadrangle project, which includes a new regional gallery in the city centre.

The Lismore Quadrangle project, costing a total of \$5.8 million, will include a relocated gallery in the old C Block building off Keen Street as well as a public piazza and new car parking.

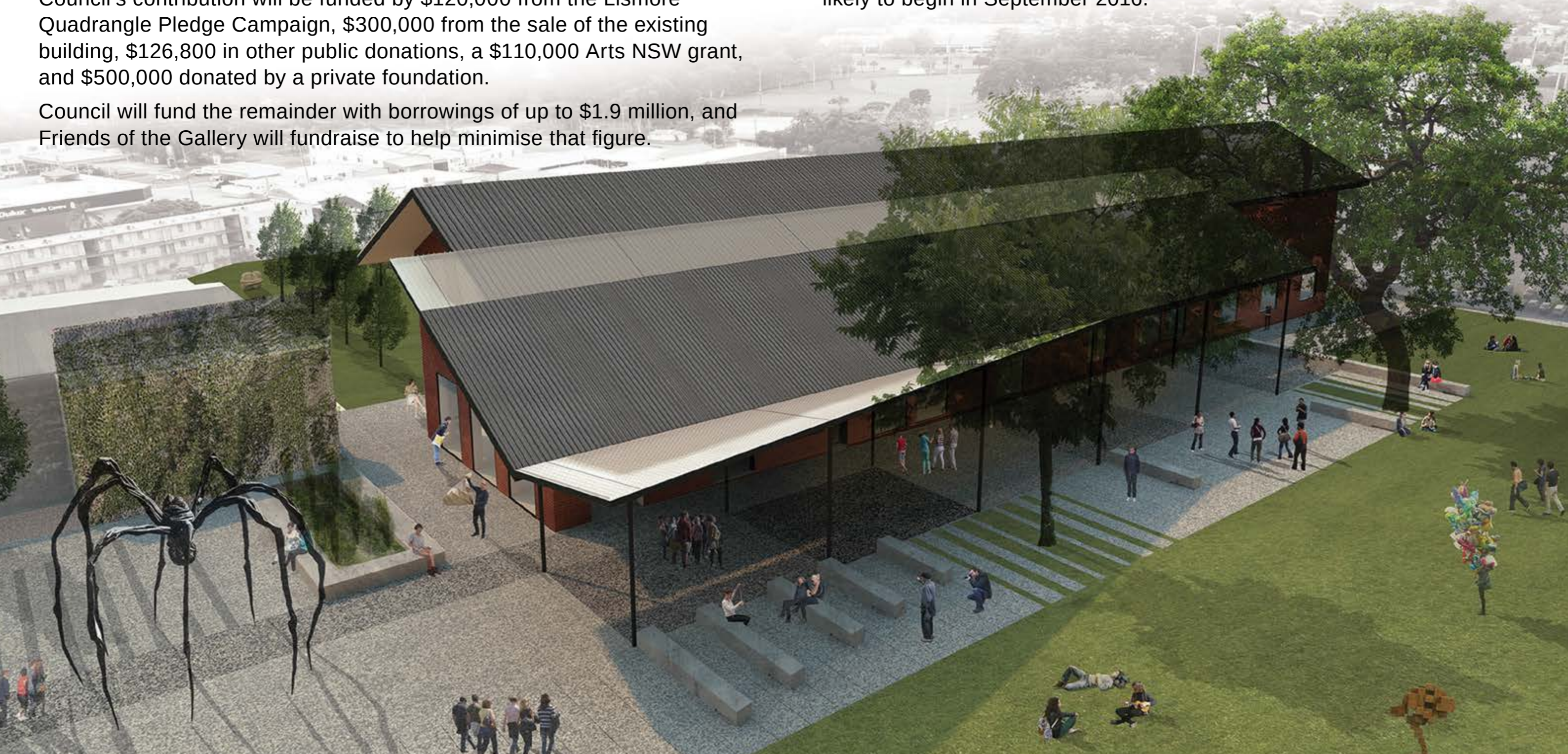
Council's contribution will be funded by \$120,000 from the Lismore Quadrangle Pledge Campaign, \$300,000 from the sale of the existing building, \$126,800 in other public donations, a \$110,000 Arts NSW grant, and \$500,000 donated by a private foundation.

Council will fund the remainder with borrowings of up to \$1.9 million, and Friends of the Gallery will fundraise to help minimise that figure.

The Lismore Quadrangle will include the gallery, the Northern Rivers Conservatorium and Lismore Library all surrounding a public square.

This is expected to increase visitors to the precinct to about 300,000 annually, create 27 direct jobs, and expand Lismore's economy by \$1.8 million annually.

Tenders for the project are expected to be called mid next year with work likely to begin in September 2016.



Christmas operating hours

Lismore City Council

Closed from Friday, 25 December until Monday, 4 January.

Richmond Tweed Regional Library

Closed from Friday, 25 December until Monday, 4 January.

Lismore Memorial Gardens office

Closed from Friday, 25 December until Monday, 4 January.

Lismore Regional Gallery

Closed from Tuesday, 22 December until Tuesday, 5 January.

The gallery will be open especially for the Tropical Fruits parade on Tuesday, 29 December from 2-5pm and on Wednesday, 30 December from 10am to 4pm.

Goonellabah Sports & Aquatic Centre

Thursday, 24 December	5.45am to 5pm
Friday, 25 December	Closed
Saturday, 26 December	Closed
Sunday, 27 December	10am to 3pm
Monday, 28 December	10am to 3pm
Tuesday, 29 December	10am to 3pm
Wednesday, 30 December	10am to 3pm
Thursday, 31 December	10am to 3pm
Friday, 1 January	Closed
Saturday, 2 January	Normal hours resume

Lismore Memorial Baths

Thursday, 24 December	6am to 5pm
Friday, 25 December	Closed
Saturday, 26 December	Closed
Sunday, 27 December	9am to 5pm

Monday, 28 December	9am to 5pm
Tuesday, 29 December	6am to 5pm
Wednesday, 30 December	6am to 5pm
Thursday, 31 December	6am to 5pm
Friday, 1 January	Closed
Saturday, 2 January	Normal hours resume

Recycling facilities and services

Lismore Recycling & Recovery Centre

Friday, 25 December	Closed
Saturday, 26 December	Closed
Sunday, 27 December	Open
Monday, 28 December	Closed
Friday, 1 January	Closed

Revolve Shop

Closed from Friday, 25 December until Tuesday, 5 January.

Brewster Street Drop-off Centre

Open every day during the holiday period.

Kerbside Collections

Kerbside collections will be as normal during the holiday period. Please place bins out the night before collection as collection times may vary during this period.

Nimbin Transfer Station

Saturday, 26 December – Closed

Visitor Information Centres

Lismore Visitor Information Centre

Closed Christmas Day and Boxing Day only.

Nimbin Visitor Information Centre

Closed Christmas Day only.

COUNCIL DECIDES...

At the ordinary meeting of 8 December, Council decisions included the following:

- Council resolved (unanimous with one absent) to refurbish the Lions Fountain outside City Hall and undertake the City Hall Lions public art project as conceived by artist Scott Harrower. Council also resolved to add the refurbished Lions Fountain to Council's asset register and to commit to its ongoing maintenance.
- Council resolved (unanimous with one absent) to create a companion animal off-leash area at Hepburn Park, Goonellabah (the northern end adjoining Holland Street). The off-leash area will be funded with \$30,000 from Section 94 Plan funds – Tucki Tucki Creek Embellishment.
- Council resolved (8/2 in favour with one absent) to adopt and implement the Lismore Base Hospital Car Parking Strategy, which includes new charges for parking in the hospital precinct as well as a Resident Parking Scheme. New prices will be \$3 per hour for Uralba and Hunter Streets, and \$7 per day in Dalziell Street. All surplus funds are reserved for application to future expenditure on road, parking and infrastructure improvements in the hospital precinct. Council will review the strategy within 12 months of implementation.
- Council resolved (6/4 in favour with one absent) to adopt the proposed amendments to the Imagine Lismore 4 Year Delivery Plan 2013-2017 and Long Term Financial Plan 2015-2025. Council also resolved that all submissions received in both this consultation and the initial consultation is submitted to IPART for consideration with Council's Special Rate Variation application.

A complete list of Council resolutions can be viewed at www.lismore.nsw.gov.au.

AQUARIAN ARCHIVE PUTS UNIQUE LOCAL HISTORY ONLINE

Documentation relating to the famous Aquarius movement of the 1970s has now been made into an online collection.

The Aquarian Archive website was created using a \$30,000 NSW State Library Development Grant, which enabled Council to digitise documents from the Aquarian Archive collection that was temporarily housed at Southern Cross University. The hardcopy archive is now in the custody of the Lismore Library Local History Collection.

The online collection contains a large number of documents relating to the North East Forest Alliance (NEFA), which includes records of conservation groups and environmental campaigns since the famous Terania Creek protests in 1979. There is also documentation from the Peter Hamilton collection concerning the New Settlers movement in the area.

The original hardcopy archive also contains material that was not digitised, such as Benny Zable's collection of placards, fabrics and banners, Graham Irvine's collection of audio tapes and documentaries, and a general collection including documents, films, videos, maps and posters.

"The archive contains a huge amount of documentation and to have it all online rather than having 60 boxes of old paper sitting in storage is a great improvement," Council's Records Management Coordinator Tim Robertson said.

"There is a rich and unique history around the Aquarius movement. This archive will hold special memories for many people, and we hope having it online will allow people to use and enjoy it."

To find the archive go to www.visitnimbin.com.au and click on Aquarian Archive.



NEW YEAR ROADWORKS PLEASE READ... THIS COULD AFFECT YOU!

Pleasant and Fischer Street roundabout, Goonellabah

We are putting in a roundabout at the intersection of Pleasant and Fischer Streets, Goonellabah, which will require us to close the road for at least one week starting on 9 January. This will affect a lot of traffic as this route is used by many people to reach Goonellabah from downtown.

These roadworks effectively mean you cannot drive to Goonellabah via Cynthia Wilson and Invercauld Road, so please use Ballina Road ONLY if you are travelling to Goonellabah during this time.

From mid-January there will still be roadworks going on, but the road should be open. Just be mindful that there will be delays. We encourage people to travel to Goonellabah via alternative routes up until work is complete.

Casino Street, South Lismore

We are reconstructing Casino Street (Caniaba Street west to the city limit) in early January. There will be traffic control in place and minor delays are expected.

Dalziell Street and Dibbs Street, Lismore

We will be temporarily closing Dalziell Street in early January to formalise new car parking places as part of the Lismore Base Hospital Car Parking Strategy. We also need to relocate a water main. Dibbs Street (at the Uralba Street intersection) will have traffic control.

Zadoc Street, Lismore

Roadworks from Keen Street to Dawson Street will take place in early January. The road will be reduced to one-lane for around four weeks (approximately two weeks for each side). Detours will be in place for entry/exit from Keen and Dawson. Please be mindful of potential delays and follow traffic control on site.

Boatharbour Road, Boatharbour

We are replacing a major culvert pipe under Boatharbour Road about 3km east of Bangalow Road.

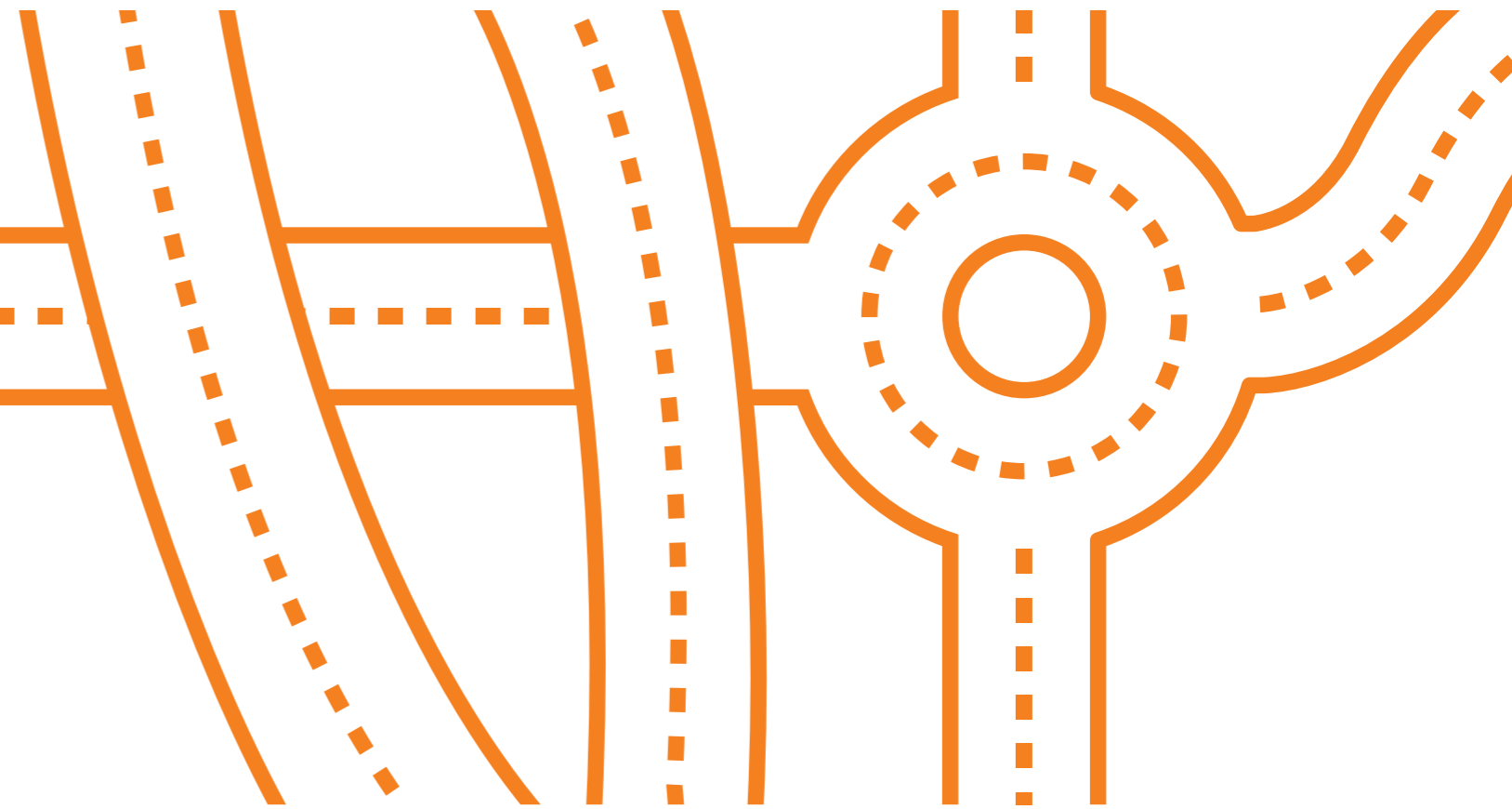
We need to close the road for up to 14 days to complete the work. Residents will need to use alternative routes during this time – Cameron/ Cowlong Road linking to the Bruxner Highway to the south or Eltham Road linking to Bangalow Road to the north.

We will start work and have these detours in place from 11 January unless we experience heavy rain. We are doing this work during school holidays as it is quieter and there are no school buses.

We plan to re-open the road by late January, but there will still be roadworks and people can expect delays of up to 10 minutes. We will have traffic control in place and hope to finish the works by mid-February.

For any of the above roadworks, please keep an eye on electronic message boards on site or visit www.mylocalroads.com.au for roadwork updates.

*If you have any questions about the works, please contact Design Engineer **Barry Goodwin** on **1300 87 83 87** during office hours or email us at council@lismore.nsw.gov.au. Please be aware we will be closed from Christmas Day until Monday, 4 January.*





DEVELOPMENT CONSENTS ISSUED

ENVIRONMENTAL PLANNING AND ASSESSMENT ACT

In accordance with the provisions of Section 101 of the Act and Clause 124 of the EP&A Regulation, notification is given that the undermentioned developments have recently been granted consent.

DA No.

05/568-2 29 Krauss Avenue, Loftville

Section 96(1A) modification to include a display shed being a 9m x 6m gable shed with awnings to the southern and western sides and a business identification sign on the northern wall of the shed.

12/7-2 14 Sandy Point Road, Monaltrie

Section 96(1A) modification to relocate the approved dwelling location to be closer to the Richmond River.

13/94-2 15 Foleys Road, South Lismore

Section 96(1A) modification to increase the height of the shed by 900mm and the length by 3m.

15/1-2 275 Arthur Road, Corndale

Section 96(1A) modification to add a deck and covered pergola to the western side of the dwelling.

15/34 8 North Woodburn Lane, North Woodburn

Alterations to dwelling.

15/159-2 59 Federation Drive, Eltham

Section 96(1A) modification to add decking, balustrade and wire fence to replace some glass panels, and screen the outer underside with decking.

15/227-2 36 Gwynne Road, Jiggi

Section 96(2) modification to change consent from dual occupancy to a dwelling addition (remove the proposed kitchen from the plan).

15/248 2 Lancaster Drive, Goonellabah

Conversion of a single industrial unit into two industrial units (units 2 and 2a) and the change of use of unit 2 to an indoor recreational facility.

15/262 21 D'Arcy Drive, Goonellabah

Extension to existing dwelling including two bedrooms, living room, deck and carport with a building line variation to 0.3m to D'Arcy Drive.

15/290 62 Molesworth Street, Lismore

Change of use from retail to business premises, internal commercial fitout and associated signage.

15/294 7 Merinda Place, Goonellabah

Shed and awning.

15/296 7 Highview Crescent, Modanville

Inground swimming pool.

Details of applications and consents, together with conditions attached, may be inspected at Council's Corporate Centre during business hours or via DA Tracking at www.lismore.nsw.gov.au.

DEVELOPMENT PROPOSALS

ENVIRONMENTAL PLANNING AND ASSESSMENT ACT

As the consenting authority, Council has received the following development applications (and/or applications for modifications to existing consents) for consideration.

DA NUMBER: 15/319

LOCATION AND DP LOT: 25 Walker Street, Clunes (Lot 2 DP 843048).

APPLICANT: Newton Denny Chapelle.

DESCRIPTION: Subdivision to create 8 lots for residential purposes (Stages 1 and 2).

CLOSING DATE: 15 January 2016.

DA NUMBER: 15/329

LOCATION AND DP LOT: 7 Tuntable Creek Road, The Channon (Lot 11 DP 1112849).

APPLICANT: Mr C I Gillies.

DESCRIPTION: Use of an existing unauthorised building as an eco-tourist facility (cabin).

CLOSING DATE: 15 January 2016.

The above development applications and Statement of Environmental Effects may be inspected at Council's Corporate Centre, 43 Oliver Avenue, Goonellabah or via DA Tracking at www.lismore.nsw.gov.au.

Further information relating to written submissions is available on Council's website. There are laws regarding the mandatory disclosure of political donations in relation to planning matters. Political donations disclosure reporting forms are available from the Department of Planning at www.planning.nsw.gov.au.



NEW GOONELLABAH SPORTS & AQUATIC CENTRE WEBSITE LAUNCHED

We have launched a new Goonellabah Sports & Aquatic Centre website with all the information you need about the aquatic centre, Lismore Memorial Baths and the new 24-hour gym, SWITCH.

The website is part of a new suite of websites that have been rolled out, which started with the new Lismore City Council website launched in 2014 and then the new Northern Rivers Waste website in September this year.

The websites are colourful, easy to navigate and responsive, so residents can enjoy the same information and functionality from their computer, tablet or smartphone.

View the new Goonellabah Sports & Aquatic Centre website at www.gsac.net.au.



LISMORE TO HOST U15 OCEANIA BASEBALL CHAMPIONSHIP

Baseball Australia has announced that the 2016 U15 Oceania Baseball Championship will be held in Lismore from 19 to 24 January, in partnership with Far North Coast Baseball and Council.

Lismore will play host to Australia, New Zealand and Guam for four days of competition that will decide the qualifying team to progress to the WBSC U15 Baseball World Cup in Japan.

Close to 100 players, coaches and officials plus their families and spectators will arrive in Lismore on Tuesday, 19 January.

Finalised game and ceremony schedules will be released closer to the event.



NIMBIN TRANSFER STATION RENOVATION

Renovation of the Nimbin Transfer Station will begin soon, with works expected to take at least three months.

The site will remain open and operational during the renovation period. During the works, the location of the drop-off skips will change and customers are asked to follow staff directions.

Renovations include a new drop-off area, new security fencing, improved roadways and better amenities. We need to bring the transfer station up to today's safety standards and hope to have a more user-friendly facility for the whole community.

Thanks for your patience while we get the work done.



A GREAT NIGHT AT CAROLS BY CANDLELIGHT

A big thanks to all those who came along to Carols by Candlelight on 13 December... we had around 3500 people through the gates and we raised around \$2000. That money will help disadvantaged children in the local area have a more enjoyable Christmas, so thanks to everyone for giving and to the YWCA for helping those people not as fortunate as many of us at Christmas.

The next big event on the calendar in Lismore is Eat the Street on Saturday, 12 March, so book that date into your calendar now. The festival is now an annual event and everyone is invited to come an eat, drink and be merry.



POSITIONS VACANT



We want skilled, passionate people in our workforce who will strive to make the Lismore Local Government Area the best place it can be for our diverse and unique community.

Please find below our latest employment opportunities:

Position	Salary	Closing Date
Library Branch Technician (Tweed area)	\$1,000.80 to \$1,150.92 per week + super	Sunday, 10 January 2016
IT Business Systems Administrator (part-time)	\$28.59 to \$32.88 per hour + super	Sunday, 17 January 2016
Graphic Designer (part-time)	\$35.62 to \$40.96 per hour + super	Sunday, 17 January 2016
Bridge Carpenter x 2	\$959.90 to \$1,103.89 per week + super	Sunday, 17 January 2016
Traffic Controller x 4	Entry pay rate \$770.50 per week + super	Sunday, 17 January 2016
Electrical SCADA/PLC Technician	\$1,037.70 to \$1,193.36 per week + super	Sunday, 31 January 2016

For further information or to apply please visit www.lismore.nsw.gov.au



THANKS LISMORE... AND HAPPY SILLY SEASON

A big thank you to our community for your feedback, thoughts, criticisms, comments and bouquets throughout the year. You are the reason we do stuff... it's not always perfect stuff, and we don't always get it right, but we are trying to be better all the time.



We wish everyone a very happy time with friends and family, and may it be safe and peaceful.

Our first edition for 2016 will be out on 6 January. Until then, merry silly season everyone!

YOUR COVER

Council put up new Christmas decorations in the CBD this year to jazz up the famous bent Christmas tree and the CBD block.

With a sense of humour and a nod to the 'Lismore – Come to the Heart' brand, we installed new heart decorations and a two-metre tall fibreglass Santa to 'hold up' the bent tree. There are also stars and baubles hanging from the canopies of several trees around the CBD block and wreaths at CBD entrances.

The new decorations cost around \$48,000 – around half the cost of the previous decorations. Over time these had become old and tired, and many had been eaten by termites.

This is the beginning of an ongoing process to gradually improve the city's Christmas decorations.





CONTACT US:
1300 87 83 87

Lismore City Council's Corporate Centre is located at 43 Oliver Avenue, Goonellabah. We are open Monday to Friday from 8.30am to 4.30pm. Our postal address is PO Box 23A, Lismore NSW 2480. You can email us at council@lismore.nsw.gov.au



Find us on Facebook and YouTube or follow us on Twitter!



Local Matters is printed fortnightly on ENVI Australian-made, 100% carbon-neutral paper.