

LOCAL MATTERS

LISMORE CITY COUNCIL NEWS
ISSUE 54, 3 FEBRUARY 2016



WWW.LISMORE.NSW.GOV.AU



INSPIRING CITIZENS HONOURED AT AUSTRALIA DAY AWARDS

Jodie McRae, a cancer survivor and founder of local charity Jodie's Inspiration, was named Lismore's 2016 Australia Day Citizen of the Year on 26 January.

Jodie was diagnosed with a rare form of breast cancer in 2013. After being given the all-clear, she was diagnosed with secondary cancer in 2014. The mother of two and local business owner channelled her energy into establishing Jodie's Inspiration, which in six short months has raised \$105,000 for new medical equipment at Lismore's oncology units.

Jodie, who was in Sydney and unable to attend the ceremony, said she was taken aback to be awarded the Australia Day honour.

"I was blown away... it's just awesome. Best thing ever!" she said.

"There are so many people out there doing such great things for our community, and you never expect something like this to be given to you. I'm so passionate about Lismore and the whole community, because it's given me so much.

"The generosity and the kindness of people in Lismore – people who expect nothing and will go out of their way to help you – is truly amazing." Other Australia Day Award winners were:



Aboriginal Citizen of the Year: Thelma James

Thelma has been chairperson of the Lismore Reconciliation Committee for over 10 years and is involved in many community projects such as the Banyam Baigham Landcare Group, Rous Water's 'Reconnecting to Country', Sorry Day and NAIDOC Week. She is described as an inspiration, and a patient and good listener who represents the Bundjalung people with dignity and pride.

Young Citizen of the Year: Holley Somerville-Knott

Holley is the CEO and founder of the Stardust Foundation charity and a songwriter who hopes to inspire solutions to social justice. Holley is a speaker for the United Nations and was recipient of the inaugural Young Sustainability Champion Award at the Green Globe Awards in 2014. Holley is creating a comic book to inspire others to be compassionate and kind.

Sustainable Environment: Judi Emmett

Judi is secretary of the Keerrong Gas Squad, an active member of Gasfield Free Northern Rivers, and gatekeeper of Lock the Gate. As part of the anti-CSG movement, Judi organised marches, stickers, bumper stickers, pamphlets and a host of other merchandise.

Art and Culture: Amber Gooley

Amber is a volunteer with Northern Rivers Performing Arts (NORPA). She is also a tireless volunteer for LightnUp Inc. She is described as an effective and efficient administrator and a reliable, kind, honest and trustworthy person.

Services in Community (Individual): Ross McDougall

Ross started the Dunoon Men's Shed. He formed a small team and energised the group to make the project work. Ross is also captain of the local fire brigade and puts in enormous time and effort to improve the local community.

Services in Community (Group): LightnUp Inc

LightnUp Inc is a community-based arts organisation in Lismore. It provides individuals, artists, volunteers and community members with the opportunity to create artwork inspired by light and shadow. The group conducts workshops for school groups, people with disability, disadvantaged and isolated people. Programs provide employment and support people with disability, youth, the aged and migrants.

Junior Sportsperson: Keea Parrish

Keea has been selected as team and tour captain in the Under 16 Australian Futsal team to tour Brazil. At 15 she was selected to play in a Premier Division team, was the Golden Boot winner in 2015, and is the youngest student to play open girls soccer for Trinity Catholic College. She is also a zone, regional and state representative in athletics.

WASTE WISE CHALLENGE... LEARN, FILM, SCULPT AND WIN!

Council is holding another Waste Wise Challenge in 2016 for all local primary schools.

The challenge is a great way for students to learn about the importance of good waste management through a range of interactive learning experiences, and there's \$1500 in prizes up for grabs.

The challenge is aimed at Year 3 and up, however smaller schools that wish to involve all students can be accommodated.

Activities include:

- **School waste audits:**

Council staff will assist a group of students to conduct waste audits. These will provide students with at least three actions they can undertake to improve recycling habits and reduce waste at school throughout the year.

- **Becoming a Satchel Recovery Centre:**

Each participating school will receive a supply of Resource Recovery Collection Satchels to be dispersed among parents and teachers for the recovery of special recyclable items such as household batteries, mobile phones, printer cartridges, CDs and DVDs, corks, reading glasses and X-rays.

- **An excursion to the Lismore Recycling & Recovery Centre:**

All schools will visit the Lismore Recycling & Recovery Centre where they will see our Materials Recovery Facility (MRF), learn about compost made from kerbside organics, visit the Revolve Shop and discover just how much waste ends up in landfill each day. This shows the students what actually happens to the waste they create once it leaves their home. The cost of the bus is covered by Council.

- **Creating a short film:**

Don't let your work go unnoticed! Anything you do as part of the challenge, or that demonstrates good recycling and waste reduction at your school, should be included in the film. This does not have to be an Oscar-winning masterpiece, and can be created using an iPad. You need to show us what you have done to reduce waste, and what you would do if you won the prize money. Prizes will be awarded based on what has been achieved, what could be achieved, and creativity.



WASTE WISE 2016 Schools Challenge

- **Creating a recycled sculpture:**

Recycling reduces waste and saves water through a reduced need to manufacture. Students are required to create a sculpture made from recycled or reused materials. Sculptures will be placed on display at the Lismore City Council site at the Lismore Show in October, and prizes will be awarded for the most creative and innovative. There will also be a People's Choice Award.

The winning school will receive \$1500 to fund waste improvements. All schools that participate in the challenge will receive a prize valued at \$250.

For more information or to register, phone Waste Education Officer Danielle Hanigan on 1300 87 83 87.

MEETINGS, BRIEFINGS AND INTERVIEWS

COUNCIL MEETINGS

The first ordinary Council meeting for 2016 will be held on Tuesday, 9 February.

Items on the agenda include:

- Roads Service Review.
- Nimbin Water Supply.
- Proposed Part Road Closure for Brunswick Street, Lismore.

Held in the Council Chambers from 6pm. All welcome.

AFTER HOURS COUNCILLOR INTERVIEWS

Councillors are available for interviews on the first and third Monday of each month from 6pm at the Goonellabah Sports and Aquatic Centre.

Residents are invited to book in to discuss community issues with their elected representatives. Two Councillors attend the night on a roster.

On Monday, 15 February interviews will be conducted by Councillors Simon Clough and Vanessa Ekins. Interviews must be booked no later than 4pm on Friday, 12 February.

COUNCILLOR BRIEFINGS

Councillor briefings are held most Tuesday evenings so staff can provide background on issues or projects and Councillors have a chance to brainstorm and discuss.

On Tuesday, 18 February Councillors will be briefed on:

- Service Review Working Party.

This briefing is in the Council Chambers from 6pm. All welcome.

LUNCHTIME COUNCILLOR INTERVIEWS

Councillors are available for 15-minute interviews on the third Thursday of each month between 12.30pm and 1.30pm at Lismore City Library.

On Thursday, 18 February interviews will be conducted by Councillors Gianpiero Battista and Graham Meineke. Interviews must be booked no later than Tuesday, 16 February.

For more information about meetings and briefings or to book a Councillor interview, phone Sue Wade on 1300 87 83 87.

PLEASE READ... WE NEED YOUR IDEAS!

Do you live in Bentley, Blakebrook, Booerie Creek, Bungabee, Goolmangar, Fernside, Leycester, North Lismore, Rock Valley, Spring Grove or Tuncester?

We have once again started our Community Panels project in 2016 and we want people in these communities to help us create a Community Plan that details improvements and projects residents can undertake with Council support.

We have split the Local Government Area into seven localities for this project. We visited four last year and are doing three this year. If you live in one of the above communities you are part of the 'West' locality.

We would like people from these communities to attend one of two upcoming Community Planning Days to discuss people's ideas and aspirations, which we can use to form a draft Community Plan.

We are looking for people of all ages and backgrounds to attend, and we want you to bring fresh ideas, creativity, passion and enthusiasm. Come and help change your community from the ground up.

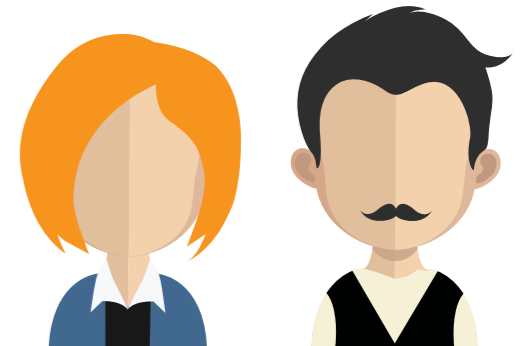
The Community Planning Days for the 'West' locality are as follows:

Planning Day One

Where: Rock Valley Hall

When: Saturday, 13 February

Time: 9.30am for 10am. Finish at 3.30pm

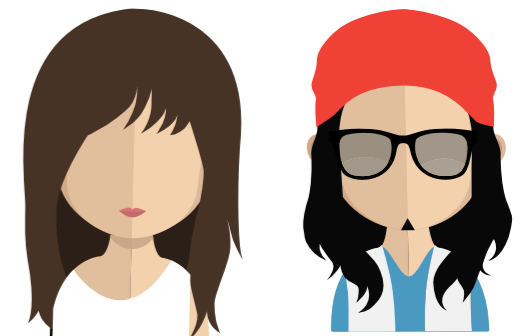


Planning Day Two

Where: Caniaba Hall

When: Saturday, 20 February

Time: 9.30am for 10am. Finish at 3.30pm.



Please RSVP to Lee-Ann Emzin on 1300 87 83 87 or email lee-ann.emzin@lismore.nsw.gov.au.

INFORMATION FOR ALL RESIDENTS: WASTE FEE CHANGES

In the first week of March we will begin charging for disposal of waste and recycling by weight at the Lismore Recycling & Recovery Centre.

As part of new NSW EPA regulations that have come into effect, we must now weigh all material that comes through the facility and residents will be charged based on this.

We have always had a per tonne rate and a minimum charge, but have previously estimated the weight by eye. The only change is we will now have accurate weighing facilities.

Charges remain as follows:

- **Mixed waste:**
\$240 per tonne with a minimum charge of \$10.
- **Self-sort waste (50% recyclable):**
\$144 per tonne with a minimum charge of \$5.
- **Green waste:**
\$65 per tonne with a minimum charge of \$5.

The weighing system will allow us to determine people's recycling and waste habits, and to measure accurately the different types of waste and recycling we receive.

"The reality remains that sorting equals saving... if you keep all your items such as waste, TVs, steel, timber, green waste and everything you bring separate, you will be charged the self-sort rate, saving you \$96 a tonne. We reward people for sorting their rubbish, so this is the best way to save money," Waste Operations Coordinator Kevin Trustum explained.

"We hope the weighing system will save us some funds as we will have accurate figures on the amount coming through the centre, and this determines the level of NSW Waste Levy charges we pay."

Kevin said people need to ensure they have adequate funds for payment as residents will be charged as they leave the centre. Cash and EFTPOS is accepted.

The NSW EPA regulations also require that staff register all number plates as vehicles enter the facility, and we ask residents to be patient as this takes time. We have built a second weighbridge to speed this up, but there may be some delays as we get used to the new system.





DEVELOPMENT CONSENTS ISSUED

ENVIRONMENTAL PLANNING AND ASSESSMENT ACT

In accordance with the provisions of Section 101 of the Act and Clause 124 of the EP&A Regulation, notification is given that the undermentioned developments have recently been granted consent.

06/854-4 17 Mackellar Place, Goonellabah

Section 96(2) modification to increase the number of units from 74 to 80, modify the unit designs/types, modify the road layout/orientation and undertake a minor relocation of the community centre, swimming pool and bowling green. The proposal constitutes integrated development in accordance with S91 of the *Environmental Planning and Assessment Act 1979*. Approval from NSW Office of Water is required in accordance with the *Water Management Act 2000*. The consent authority is Lismore City Council.

14/332-2 11 Holmesleigh Drive, Goonellabah

Section 96(1A) modification to amend the roof structure and carport extension (amended plans).

15/43 10 Norris Street, Lismore

Demolish and remove existing house and garage including paths, concrete slabs and brick wall.

15/45 454 Rous Road, Tregear

Inground swimming pool.

15/283 88 Mollys Grass Road, Tregear

Detached dual occupancy.

15/298 14 Hurley Street, Lismore

Aboveground swimming pool, removal of palms and fence upgrade.

15/302 1 Venn Street, Lismore

Garage and carport.

15/310 110 Bank Street, North Woodburn

Dwelling and shed with a building line variation to 3.5m to Woodburn Lane.

15/313 54 Main Street, Clunes

Double carport and driveway with new access off Booyong Road.

15/315 24 May Street, Dunoon

Dwelling.

15/336 75 Johnston Road, Clunes

Insulated patio roof to pool area.

15/339 14 Allen Street, Girards Hill

Carport in a heritage conservation zone.

15/342 1266 Wyrallah Road, Tucki Tucki

Shed with bathroom.

15/348 7 Panorama Road, Girards Hill

Removal of one tree and lopping another in a heritage conservation zone.

Details of applications and consents, together with conditions attached, may be inspected at Council's Corporate Centre during business hours or via DA Tracking at www.lismore.nsw.gov.au.

DEVELOPMENT PROPOSALS

ENVIRONMENTAL PLANNING AND ASSESSMENT ACT

As the consenting authority, Council has received the following development applications (and/or applications for modifications to existing consents) for consideration.

DA NUMBER: 16/7

LOCATION AND DP LOT: 8 Sexton Road, North Lismore and 55 Dunoon Road, North Lismore (Lot 2 DP 1044983 and Lot 3 DP 808657).

APPLICANT: Planners North.

DESCRIPTION: Construction of an internal access road and associated earthworks and vegetation removal. The proposal constitutes integrated development in accordance with Section 91 of the *Environmental Planning and Assessment Act 1979*. Approval from the NSW Department of Primary Industries (Water) is required in accordance with the *Water Management Act 2000*. The consent authority is Lismore City Council.

CLOSING DATE: 6 March 2016.

The above development applications and Statement of Environmental Effects may be inspected at Council's Corporate Centre, 43 Oliver Avenue, Goonellabah, or via DA Tracking at www.lismore.nsw.gov.au.

Further information relating to written submissions is available on Council's website. There are laws regarding the mandatory disclosure of political donations in relation to planning matters. Political donations disclosure reporting forms are available from the Department of Planning at www.planning.nsw.gov.au.



VEHICLE AUCTION COMING SOON

We are having a public auction of impounded abandoned vehicles, in accordance with Section 24 of the *Impounding Act 1993*.

The following vehicles will be offered for sale by auction on Wednesday, 17 February 2016 at 9am sharp.

- 2004 Holden Astra convertible – orange.
- 2003 Mitsubishi Lancer sedan – silver.
- 1965 Bedford mobile home bus – white.

All of the above vehicles are sold as is and no keys are provided.

All vehicles can be inspected between 9 and 9.30am on Tuesday, 16 February at Council's impounding yard located at the Lismore Recycling & Recovery Centre, 313 Wyrallah Road, East Lismore. Enclosed footwear must be worn.

All sales are final and must be paid at conclusion of auction by EFTPOS only (no cash). Purchased vehicles are unregistered and must be removed from Council's facility within five days by tow truck.

All vehicles have been checked and certified under section 174 of the *Personal Property Securities Act 2009*.

Starting bids will vary dependant on towing costs incurred by Council.

GSAC POOL NOW OPEN

The Goonellabah Sports & Aquatic Centre pool has reopened following replacement of the pool lining during January.

Several leaks were detected in December last year and a new PVC membrane had to be sent from Italy to replace the damaged lining.

Acting Centre Manager Yonika Mantel thanked members, parents, students and visitors for their patience and welcomed people to return to the pool and enjoy the facilities.

For more information on the Goonellabah Sports & Aquatic Centre, visit www.gsac.net.au or phone 6625 5370.



TIP FREE DAY... IT'S HERE AGAIN!

The next Tip Free Day is coming up on Sunday, 21 February at the Lismore Recycling & Recovery Centre.

As many people would be aware, the last Tip Free Day in January was a bit of a debacle. There was a huge line-up, and some cars were turned away at the end of the day, which was very frustrating for residents.

Tip Free Day was originally created so people could drop off bulky goods that could not fit into their wheelie bins.

These days, the reality is that people are dropping off day-to-day rubbish and also coming twice or three times in one day. As well as increased demand generally, this has made Tip Free Day very difficult and the volume of people coming is simply too much for the facility to handle.

As a result of this, we are looking at other ways of enabling people to drop off bulky goods. We are investigating several options and are trying to find the best solution for residents, and to ensure that waste and recycling drop-offs are spread throughout the year so staff can cope with the volumes coming in.

This Tip Free Day will remain much the same as normal, but please be aware we will be shutting the gates at 3.45pm sharp and will only process vehicles that are already lined up inside the facility.

We hope to be able to report back soon with Council's preferred solution and a way forward in the future. In the meantime, please be patient and please only attend Tip Free Day to drop off bulky goods that cannot be placed in your kerbside wheelie bins.

Thanks and stay tuned...



EXPRESSION OF INTEREST: ALTERNATIVE QUARRY OPERATION

Lismore City Council is calling for Expressions of Interest for an alternative operation of Blakebrook Quarry and/or its asphalt plant.

Blakebrook Quarry has a licence to extract 600,000 tonnes of aggregate per annum until 2039 and an average annual turnover of \$12 million.

Council is now investigating options for the alternative operation of Blakebrook Quarry, as outlined in the quarry's Strategic Action Plan.

Proposals could range from the purchase of more efficient machinery right through to sale of the business.

Council is seeking creative ideas and proposals to maximise returns from the quarry and reduce Council's risk in operating the business unit.

Expressions of Interest close at 2pm on Wednesday, 2 March.

An optional pre-tender site inspection will be held at 2pm on Wednesday, 10 February at Blakebrook Quarry. Contractors are to meet at the quarry entrance on Nimbin Road and must register with **Stephanie Pym or Phil Klepzig on 1300 87 83 87** prior to the site inspection. Contractors must bring appropriate PPE including footwear, wide-brimmed hat and high visibility clothing.

To access relevant documents regarding the EOI, interested parties need to register at Council's eProcurement portal, **www.tenderlink.com/lismore**. Submissions may also be lodged at this site in the electronic tender box.

If you experience any difficulties with accessing the above website or require further information, phone the Tenderlink helpdesk on **1800 233 533**.



RATES ★ REMINDER ★

All Lismore ratepayers are reminded that your third rates instalment for the 2015/16 rateable year is due for payment on Sunday, 28 February 2016.



YOUR COVER

Jodie McRae is the founder of Jodie's Inspiration, a local charity that has raised more than \$100,000 for medical equipment.

Jodie was diagnosed with a rare form of aggressive breast cancer in 2013. After being given the all-clear, she was diagnosed with secondary cancer in 2014. Jodie is a mother of two and local business owner whose motto is 'Live Life Large'. For more information, see inside.





CONTACT US:
1300 87 83 87

Lismore City Council's Corporate Centre is located at 43 Oliver Avenue, Goonellabah.

We are open Monday to Friday from 8.30am to 4.30pm.

Our postal address is PO Box 23A, Lismore NSW 2480.

You can email us at council@lismore.nsw.gov.au



Find us on Facebook and YouTube or follow us on Twitter!



Local Matters is printed fortnightly on ENVI Australian-made, 100% carbon-neutral paper.