



LOCAL MATTERS

LISMORE CITY COUNCIL NEWS
ISSUE 59, 13 APRIL 2016



WWW.LISMORE.NSW.GOV.AU



GRANTS SCHEME HELPS OUR COMMUNITY GROW AND THRIVE

It's amazing what a small community group can do with just a little extra money. Clunes Preschool received \$1800 last year from our Annual Community Grants Scheme and in the past 12 months they have certainly put it to good use.

The preschool has built a new chicken coop that houses two laying hens, bought new herbs and vegetables for the planter boxes around the school yard, and recently installed a new stingless native beehive.

All of these things enrich the lives and learning of the students and that's exactly what the Annual Community Grants Scheme is all about – providing money for projects that help make our community a better place.

The 2016/17 Annual Community Grants Scheme opens on Monday, 18 April and community groups can apply for grants of up to \$10,000.



We are hosting a free info session to go through the guidelines and the application process on Thursday, 14 April in the Council Chambers from 10am. Anyone is welcome to attend and you can register with Flora Zigterman on 1300 87 83 87.

Successful projects last year ranged from pet therapy at the Lismore Psychiatric Unit to revitalisation of the Lismore City Concert Band and a grant for Rainbow Region Community Farms, so they could purchase new garden beds and donate produce to Lismore's Food Bank.

As well as the Annual Community Grants Scheme, \$2000 per annum automatically goes to 29 rural halls in the Lismore LGA to assist with insurance and maintenance costs, while the 19 rural halls subject to rates charges have these waived.

Organisations are encouraged to read the Annual Community Grants Scheme Guidelines at www.lismore.nsw.gov.au before making an application.

*Frank from Nashua
Native Bees installing
the new stingless
native beehive at
Clunes Preschool
with Director Melinda
Gambley and students.*



SECOND RECYCLED MARKET COMING UP THIS WEEKEND!

The second Lismore Recycled Market is on this Saturday, 16 April from 9am to 2pm at the Lismore Recycling & Recovery Centre.

The first market in March was a great success and each month we plan to have a new attraction so there is always something different for visitors to experience.

At our first market we had demonstrations of cooking with leftovers, and this Saturday we are having a special antiques sale. We will be showcasing and selling a shipping container of unusual antiques we have kept aside over the past few years from the Revolve Shop, and there are some really unique pieces on offer.

The Lismore Recycled Market features upcycled goods from a variety of local stallholders being sold from shipping containers, plus the Revolve Shop is open so you can hunt for bargains and second-hand treasures. There is also food, coffee, music and craft to keep the kids entertained.

Don't miss our second Lismore Recycled Market this Saturday, 16 April from 9am to 2pm at the Lismore Recycling & Recovery Centre.



REMINDER: FREE SCHOOL HOLIDAY EVENT

Don't forget our second Upcycle Your Holidays event on Thursday, 21 April at the Lismore Recycling & Recovery Centre.

This free school holiday event includes free art, craft and badge making, bus tours of the facility (including the MRF and organic processing), guided walks through the Lismore Rainforest Botanic Gardens, interactive workshops with the Catchment Model and a chance for kids to operate a garbage truck!

There is no need to book, just come along to our Environment Education Centre, located within the Lismore Recycling & Recovery Centre, 313 Wyrallah Road, East Lismore.

The day runs from 9am to 1pm and children must be accompanied by a supervising adult. Please bring a hat, sunscreen and plenty of drinking water. You might also like to have a picnic and have it among the eucalypts in the botanic gardens.

PLEASE TAKE OUR ACCESSIBILITY SURVEY

Council is working with six other local councils to produce a community survey on accessibility for people with disabilities.

The survey is open for anyone from people with a disability, carers, families, disability sector organisations and interested persons in the community.

The survey's feedback will assist councils with preparations for improving accessibility in line with the *Disability Inclusion Act 2014*. Accessibility will focus on the following areas:

- positive community attitudes and behaviours;
- liveable communities;
- supporting access to meaningful employment; and
- accessible systems and processes.

The survey can be accessed at www.lismore.nsw.gov.au and is open until Friday, 27 May 2016.

RESIDENT PARKING SCHEME BEGINS IN BASE HOSPITAL PRECINCT

Our new Resident Parking Scheme begins in late April, with residents in the Lismore Base Hospital Health Precinct invited to apply for a Resident Parking Permit.

The scheme is part of the broader Lismore Base Hospital Car Parking Strategy, adopted by Council in December. It is designed to ease car parking congestion in the hospital precinct and ensure parity with parking costs at the new multi-level car park for hospital visitors.

The Lismore Base Hospital Car Parking Strategy also includes upgrades of residential streets in the precinct.

Work in Dalziell Street is now complete, and Laurel and Hunter Street roadworks will begin once the multi-level car park is open.

Free Resident Parking Permits are now available for local residents without access to parking, or limited off-street parking at their home address. Up to five Visitor Parking Permits are also available per household.

Resident Parking Permits do not guarantee residents an on-street parking spot, but it does exempt residents from time-limited parking zones and therefore hefty parking fines.

There is a maximum limit that can be issued per household and the number of permits available is reduced by every off-street parking space available at the property.

Caravans, buses, trailers, tractors and trucks over three tonne do not qualify for the Resident Parking Scheme.

Residents can apply for resident and visitor permits at www.lismore.nsw.gov.au. Permits are valid for 12 months.



MEETINGS, BRIEFINGS AND INTERVIEWS

COUNCILLOR BRIEFINGS

Councillor briefings are held most Tuesday evenings so staff can provide background on issues or projects and Councillors have a chance to brainstorm and discuss.

On Tuesday, 19 April the agenda includes:

- Service Review updates.
- Quarry Expressions of Interest submission review.

Held in the Council Chambers from 6.30pm. All welcome.

On Tuesday, 26 April the agenda includes:

- Draft Imagine Lismore 1 Year Plan (budget).
- Review of Reserves Policy.

Held in the Council Chambers from 6pm. All welcome.

LUNCHTIME COUNCILLOR INTERVIEWS

Councillors are available for 15-minute interviews on the third Thursday of each month between 12.30pm and 1.30pm at Lismore City Library.

On Thursday, 21 April interviews will be conducted by Councillors Neil Marks and Isaac Smith. Interviews must be booked no later than Tuesday, 19 April.

AFTER HOURS COUNCILLOR INTERVIEWS

Councillors are available for interviews on the first and third Monday of each month from 6pm at the Goonellabah Sports & Aquatic Centre.

On Monday, 2 May interviews will be conducted by Councillors Greg Bennett and Simon Clough. Interviews must be booked no later than 4pm on Friday, 29 April.

For more information about meetings and briefings or to book a Councillor interview, phone Sue Wade on 1300 87 83 87.

JOIN THE ABORIGINAL ADVISORY GROUP

Council is seeking passionate Indigenous people to join its Aboriginal Advisory Group, and is holding a recruitment and information session on Friday, 22 April.



Council staff Lee-Ann Emzin (far left) and Annie McWilliam (centre) with Aboriginal Advisory Group members (l-r) Ros Sten, Diane Harrington and Thelma Roberts. Inset: member Teena Binge.



The Aboriginal Advisory Group provides advice and guidance to Council on a variety of issues, including projects or services that affect Aboriginal communities, cultural heritage matters and employment and training.

The group meets quarterly and is chaired by Lismore's Mayor. Members discuss reports coming to Council that may affect Aboriginal people and the group also spends significant time looking at Aboriginal heritage and how it can be retained and preserved in new developments.

If you are a proud and passionate Aboriginal person who would like to make a difference locally, we urge you to nominate today.

The recruitment and information session is on Friday, 22 April from 5pm at the Council Chambers in Goonellabah. No registration is necessary and it will include a sausage sizzle.

For further information, phone Lee-Ann Emzin on 1300 87 83 87. People can nominate at www.lismore.nsw.gov.au until 25 May 2016.

LISMORE RECYCLING & RECOVERY CENTRE CLOSURES FOR ESSENTIAL WORKS

In order to complete construction of the second weighbridge at the Lismore Recycling & Recovery Centre, the facility will need to be closed from 1pm on 21 and 22 April.

The final component of the construction is the roof cover, and this requires a crane to lift the beams into place. It is too dangerous to do this and keep the weighbridge open.

Therefore, the Lismore Recycling & Recovery Centre and Revolve Shop will close to the public at 1pm on 21 and 22 April 2016.

Sorry for the inconvenience while we do these essential works and thanks for being patient.



NIMBIN POOL CLOSURES FOR WINTER

The Nimbin Community Pool will be closed for the autumn/winter season from Monday, 18 April.

Council is aware that this means the pool will be closed during the school holidays but unfortunately this is unavoidable as we must have the pool drained before the Mardi Grass festival in early May.

The Nimbin Community Pool will reopen in September.

2016 LISMORE CUP PUBLIC HOLIDAY

The Lismore Cup half-day holiday for 22 September 2016 has been approved.

The half-day holiday will be in effect on Thursday, 22 September 2016 from 12pm to 6pm.



DEVELOPMENT CONSENTS ISSUED

ENVIRONMENTAL PLANNING AND ASSESSMENT ACT

In accordance with the provisions of Section 101 of the Act and Clause 124 of the EP&A Regulation, notification is given that the undermentioned developments have recently been granted consent.

07/602 554 Ballina Road, Goonellabah

Staged residential subdivision (to create 77 residential lots, four public reserves, seven new roads, associated infrastructure works and one residue lot including the existing dwelling fronting Ballina Road).

10/496-3 61 Brunswick Street, Lismore

Section 96(2) modification to include a covered deck.

14/239-4 23 Jubilee Avenue, Goonellabah

Section 96(1A) modification to change the roof line and bedroom size.

14/387-2 1207 Jiggi Road, Jiggi

Section 96(1A) modification to relocate the approved house site (amend condition 1).

15/321 27 Barrys Road, Modanville

Secondary dwelling (manufactured home) with a building line variation to 8.5m to Barrys Road and the removal of two trees.

15/322 78 Davis Road, Jiggi

Dwelling.

15/325-2 634 and 640 Dorrroughby Road, Dorrroughby

Section 96(1) modification to amend condition 6 regarding the vehicular access requirement to 634 Dorrroughby Road.

16/3 65 Rous Road, Goonellabah

Installation of a 99.84kW rooftop photovoltaic system consisting of 384 solar modules and four solar inverters.

16/8 32 Murray Street, East Lismore

Addition to existing dwelling including a covered deck, living room with powder room and patio.

16/9 34 Ryces Drive, Clunes

Dwelling.

16/12 88 Keen Street, Lismore

Change of use of part of the first floor of a building to an arts and craft gallery (information and education facility).

16/19 37 Dunromin Drive, Modanville

Dwelling addition (pergola and carport).

16/24 7A Pleasant Street, Goonellabah

Dwelling.

16/32 20 Spring Avenue, Goonellabah

Fence (2.1m high) with three single gates and one double gate.

16/37 67 Beardow Street, Lismore Heights

Carport with a building line variation to 1500mm to Beardow Street.

16/42 53 Cullen Street, Nimbin

Removal of three camphor laurel trees and one radiata pine in a heritage conservation area.

16/44 124 Hunter Street, Lismore

Carport.

16/54 50 Moras Road, Rock Valley

Construction of roof over existing deck.

Details of applications and consents, together with conditions attached, may be inspected at Council's Corporate Centre during business hours or via DA Tracking at www.lismore.nsw.gov.au.

Political donations disclosure reporting forms are available from the Department of Planning at www.planning.nsw.gov.au.





CHANGE IN ROAD LEVELS: CONWAY ST

Planned roadworks in Conway Street, Lismore

Council is going to repair Conway Street between Dawson and Keen Streets, Lismore, next financial year.

While the roadworks are still to be designed and costed, we are looking at repaving the centre traffic lanes only. However, we may later reseal the entire road width as a second stage. We will let you know what work will be undertaken once we have completed our design process.

When fixing the road, we may overlay it with new roadbase that would slightly raise road levels, by a maximum of +100mm. In accordance with the *Roads Act 1993*, proposed changes to road levels are open to public comment for 30 days.

Submissions should be titled 'Conway Street roadworks project' and state any reasons for objection and the part of road it relates to. Post your submission to PO Box 23A, Lismore, NSW 2480 or email council@lismore.nsw.gov.au by 4pm on 16 May 2016.

For more information phone our Design Engineer Barry Goodwin on 1300 87 83 87 or email barry.goodwin@lismore.nsw.gov.au.

T2016-08: SEWAGE TREATMENT PLANT 11KV TRANSLINE RELOCATION

Council is inviting submissions from suitably qualified and experienced contractors for Stage 1 of the relocation of the 11kV transmission lines at South Lismore Sewage Treatment Plant.

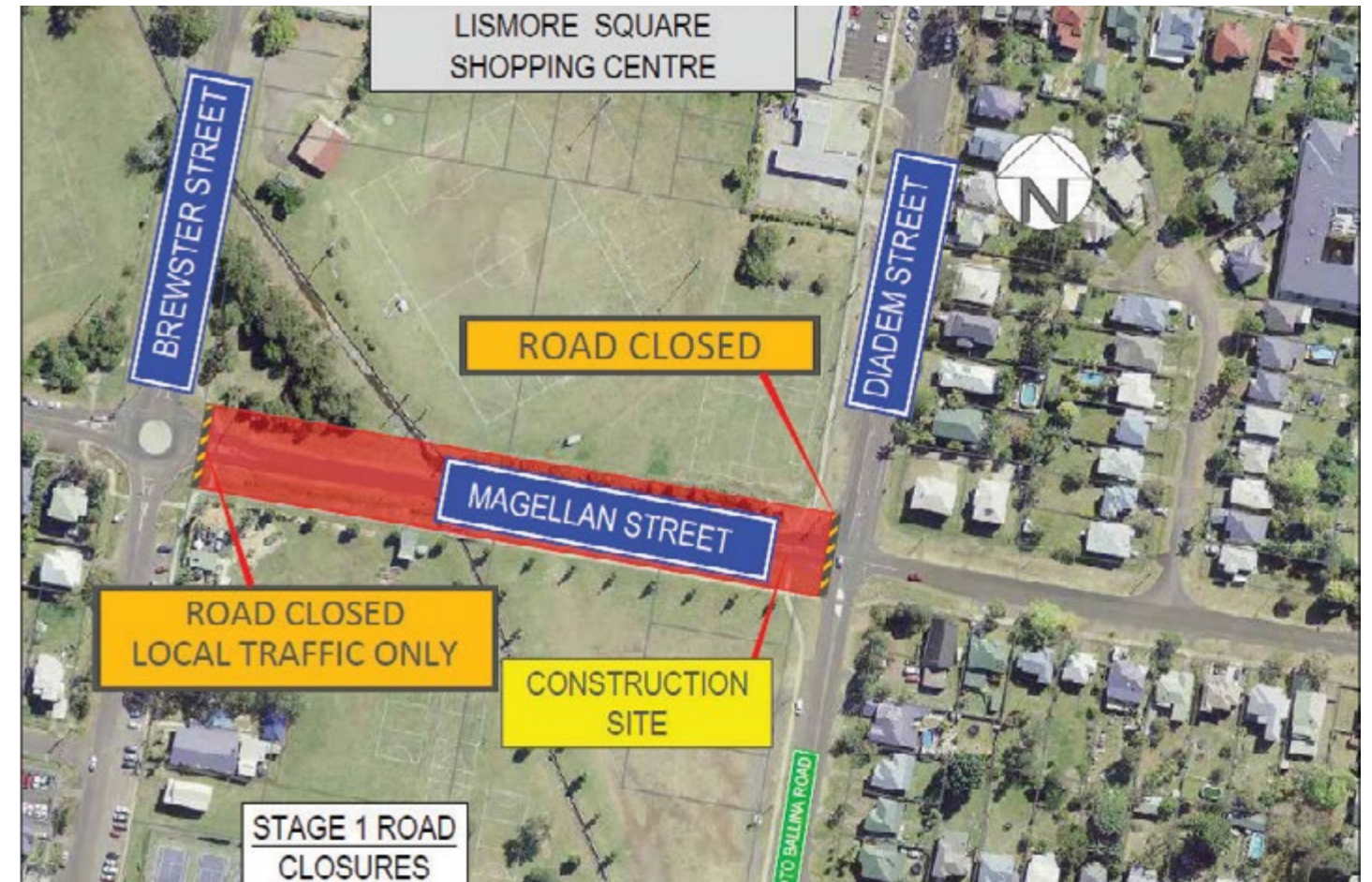
Tender submissions close at 2pm on Thursday, 28 April. There is a compulsory site visit at the plant on Three Chain Road on Tuesday, 14 April at 10am.

Interested parties are required to register at Council's eProcurement portal www.tenderlink.com/lismore to access relevant documents.



TRAFFIC ALERT: DIADEM AND MAGELLAN STREETS, LISMORE

Works have started on a new roundabout at the intersection of Diadem and Magellan Streets near Lismore Shopping Square.



This is a reminder that traffic control will be in place and you will need to be mindful of this when travelling in the area.

During the first stage of roundabout works, the WESTERN side of the intersection will be closed. Detours are in place via Uralba Street to the north and Ballina Road to the south.

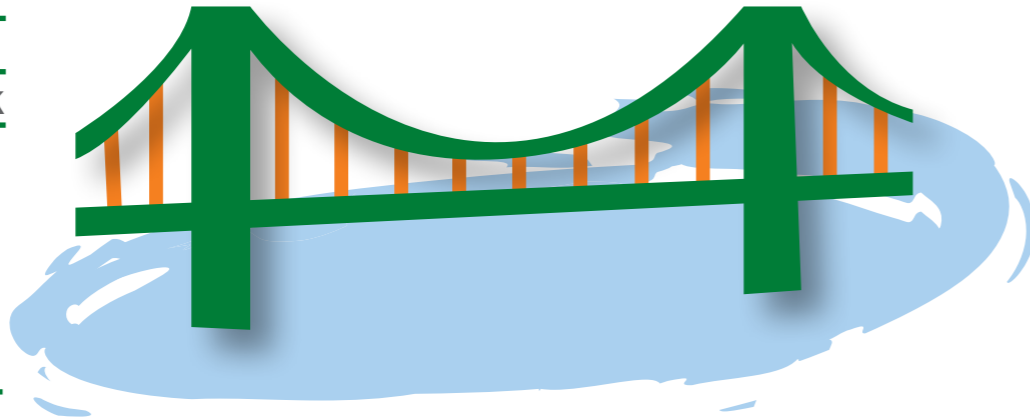
Traffic along Diadem Street and Magellan Street to the east will be maintained with traffic control.

We will keep you updated with detour information in upcoming editions of *Local Matters* and with on-site message boards.



UPDATE ON WILSON STREET BRIDGE PROJECT, SOUTH LISMORE

Works are planned to start on a new bridge and road that will link Wilson Street from its Elliott Road intersection to Wilson Street South in the South Lismore Industrial Estate.



This project is funded by all three levels of government and will improve transport routes to and from the South Lismore Industrial Estate.

Works will be staged throughout 2016 and the new link road will be open in 2017. We will firstly build the southern part of the link road from Wilson Street South and replace the water main in Wilson Street south of Elliott Road. We plan to start building the new bridge over Hollingworth Creek around May 2016. When this work is completed around the end of the year we will widen and fix Wilson Street between the new bridge and Elliott Road.

As a separate but related project, we are looking at pedestrian safety improvements in Wilson Street outside of Lismore South Public School for 2016/17. We are seeking funding for this other project that would include traffic calming medians and shifting on-street parking into the adjoining section of Kyogle Street outside the school.

We will keep you updated on our progress for these road projects in future editions of Local Matters. If you have any enquiries, contact our Project Manager Gavin Mulcahy on 1300 87 83 87 or gavin.mulcahy@lismore.nsw.gov.au.



POSITIONS VACANT

Industrial Electrician

Full-time: 76-hour fortnight

Salary: \$959.88 to \$1,103.90 per week plus superannuation

Contact: Matt Potter, Water and Wastewater Systems Supervisor, on 0408 678 415.

Position details: The electrician is a key member of the Water & Wastewater section within the Works Department of Council's Infrastructure Services Directorate. The successful applicant will undertake repairs and new installations of equipment to ensure the safe and precise operation of sewage pump stations, sewage treatment works and water supply equipment, and other Council department infrastructure.

Closing date: Sunday, 17 April at 4pm.

YOUR COVER

Tatiana Vaupel is 4, super good at picking up chickens and a student of Clunes Preschool. The school was awarded a community grant last year and used part of it to buy a chicken coop with two hens. So far the kids have called the white one Snowy but are unable to decide on a name for our cover girl, so she has remained nameless. More on our community grants inside.





CONTACT US:
1300 87 83 87

Lismore City Council's Corporate Centre
is located at 43 Oliver Avenue, Goonellabah.

We are open Monday to Friday from 8.30am to 4.30pm.

Our postal address is PO Box 23A, Lismore NSW 2480.

You can email us at council@lismore.nsw.gov.au



Find us on Facebook and
YouTube or follow us on Twitter.



Local Matters is printed fortnightly on
Australian-made, 100% recycled and
carbon-neutral paper.