



# LOCAL MATTERS

LISMORE CITY COUNCIL NEWS  
ISSUE 61, 11 MAY 2016

Barry

[WWW.LISMORE.NSW.GOV.AU](http://WWW.LISMORE.NSW.GOV.AU)



# FLOATING SOLAR FARM FOR LISMORE

## Council has released tenders for the Lismore Community Solar project, including a floating solar farm.

Lismore Community Solar is a collaboration with Farming the Sun, Australia's largest community solar energy initiative. Farming the Sun will establish two companies, each with 20 local investors, which will lend Council the funds to build two solar farms.

The two companies – Lismore Community Solarfarm (East) and Lismore Community Solarfarm (Goonellabah) – will each lend Council money to purchase a 99kW solar system. One will be a rooftop solar system at the Goonellabah Sports and Aquatic Centre while the other will be a floating solar system on a tertiary pond at the East Lismore Sewage Treatment Plant.



"This will be Australia's first council/community solar farm and we believe the second only floating solar system being commercially used within Australia. It is certainly a first for a council in NSW," explained Environmental Strategies Officer Sharyn Hunnisett.

Sharyn said floating solar is already being used internationally, but is only now finding its way to Australia. She said the idea for a floating system in Lismore was born of necessity.

"It basically came about because of spatial concerns. We simply didn't have enough roof or land space at the East Lismore Sewage Treatment Plant," she said. "Then it hit us – we have all this space on the water; why not use that?"

The tertiary pond at the East Lismore Sewage Treatment Plant provides a large body of water with low velocity, perfect for a floating solar farm. The cooling properties of water help the solar panels last longer and perform better, while increased shade over the pond reduces evaporation and algal growth.

Both tenders for the Lismore Community Solar project can be viewed at [www.tenderlink.com/lismore](http://www.tenderlink.com/lismore).

Farming the Sun said it expects to release a company share offer for the two community companies by the end of June.

## DON'T FORGET TIP FREE DAY

### The next Tip Free Day is on this Sunday, 15 May.

Tip Free Day runs from 9am at the Lismore Recycling & Recovery Centre, 313 Wyrallah Road, East Lismore. Gates will be closed at 3.45pm sharp and only cars within the facility will be processed.

Please remember to bring your rates notice or driver's licence to show you live in the Lismore City Council Local Government Area, and please keep scrap metal, timber, green waste, household items and other recyclables separate from general waste. Also, please remember we DO NOT accept asbestos, commercial quantities of chemicals or truck/tractor tyres, and no more than 12 car tyres are allowed in one load.

# DO YOU LIVE IN THE NORTH OF THE LGA?

## WE WANT YOU!

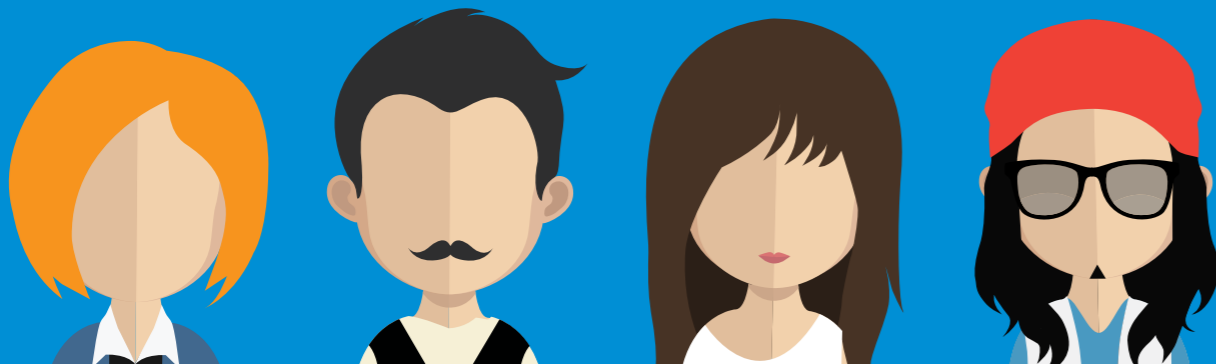
We are once again visiting rural communities this year with our Community Panels project, and are calling on locals to help us create a Community Plan for different localities.

The next cab off the rank is the 'North West' locality, which encompasses Blue Knob, Coffee Camp, Georgica, Jiggi, Larnook, Mountain Top, Nimbin and Stoney Chute.

People from these communities are invited to attend one of two upcoming Community Planning Days. We provide a free lunch and will discuss with you how your community can improve in the future. All ages are welcome – just bring enthusiasm and your best ideas.

After the Community Planning Days, we will go away and create a draft plan based on everyone's feedback, and return to see if we have captured your community's needs.

# COMMUNITY *CLEAN UP*



The Community Planning Workshops for the 'North West' locality are as follows:

### Community Planning Day One

**Where:** Jiggi Hall

**When:** Saturday, 28 May

**Time:** 9.30am to 3pm

### Community Planning Day Two

**Where:** Nimbin School of Arts (town hall)

**When:** Saturday, 18 June

**Time:** 9.30am to 3pm

Please RSVP to our Partnering and Community Engagement Officer Casie Hughes on 1300 87 83 87 or email [casie.hughes@lismore.nsw.gov.au](mailto:casie.hughes@lismore.nsw.gov.au).

## COMMUNITY *GET TOGETHER*



## COMMUNITY *PLANTING DAY*



## NEW 24-HOUR TOILET A RELIEF FOR CBD PATRONS

Council is currently building a 24-hour, unisex toilet in the Lismore CBD.

The \$90,000 toilet will be built on the median strip on Keen Street near the intersection of Keen and Woodlark Streets – a hotspot for late-night revellers.

The new toilet is a key component of Council's CBD and Riverbank Improvement Program, which also includes an upgrade of the Clyde Campbell Carpark toilet block and refurbishment of the Lismore Transit Centre toilets.

The toilet will be cleaned twice a day and can be used by both daytime shoppers and night-time hotel patrons.

As part of CBD and Riverbank Improvement Program, Council has also started additional cleaning in the CBD and has stabilised, replanted and built a new pathway on the eastern riverbank of the Wilsons River.

Council will begin an upgrade of the inner footpath right around the CBD block in 2016/17. The work will cost \$1.5 million and will be completed over four years.

Work on the 24-hour toilet is expected to take around six weeks.



## NIMBIN TRANSFER STATION UPGRADE (ALMOST) COMPLETE

There may be a few finishing touches to go, but the bulk of the Nimbin Transfer Station upgrade is now complete, with a new drop-off area for waste and recycling.

Where it was previously messy and difficult to lift items into the skips, locals can now drive onto an elevated platform and quickly and easily place items in the three skips provided.

The upgrade also includes new security fencing, new gatehouse, improved roadways and better amenities. Work is still underway and residents are urged to follow traffic control when on-site, as entry and exit to the facility has changed.

The Nimbin Transfer Station was looking very old and tired, and was not up to today's safety standards. These works are designed to improve and modernise the facility.

**The Nimbin Transfer Station is open Tuesday, Thursday and Saturday from 9am to 3pm.**

## TRAFFIC ALERT: HUNTER STREET, LISMORE, OPPOSITE BASE HOSPITAL

Roadworks are about to start in Hunter Street, between its Laurel Avenue and Orion Street intersections, to formalise car parking on the western side of the street.

Traffic control will be in place and include staged closures of on-street parking while we do works.

We apologise for the temporary reduction in parking while we repair the road and build new kerb and gutter over the next six weeks. However, the result will be a formalised car parking area that's much more pleasant for residents and hospital visitors.

Please slow down and follow traffic control if you are in the area.

# MEETINGS, BRIEFINGS AND INTERVIEWS

## COUNCILLOR BRIEFINGS

Councillor briefings are held most Tuesday evenings so staff can provide background on issues or projects and Councillors have a chance to brainstorm and discuss.

On Tuesday, 17 May the agenda includes:

- Annual Community Grants Scheme.
- Reserve Trust meeting.
- Service Review.

Held in the Council Chambers from 6.30pm. All welcome.

On Tuesday, 24 May the agenda includes:

- Public Art Policy.
- Annual Community Grants Scheme.
- Planning Proposals.

Held in the Council Chambers from 6pm. All welcome.

## AFTER HOURS COUNCILLOR INTERVIEWS

Councillors are available for interviews on the first and third Monday of each month from 6pm at the Goonellabah Sports and Aquatic Centre.

On Monday, 16 May interviews will be conducted by Councillors Gianpiero Battista and Vanessa Ekins. Interviews must be booked no later than 4pm on Friday, 13 May.

## LUNCHTIME COUNCILLOR INTERVIEWS

Councillors are available for 15-minute interviews on the third Thursday of each month between 12.30pm and 1.30pm at Lismore City Library.

On Thursday, 19 May interviews will be conducted by Councillors Ray Houston and Mathew Scheibel. Interviews must be booked no later than Tuesday, 17 May.

**For more information about meetings and briefings or to book a Councillor interview, phone Sue Wade on 1300 87 83 87.**

# LANTERN PARADE TICKETS ON SALE

Tickets are now on sale for the Lismore Lantern Parade finale on Saturday, 25 June at Oakes Oval, and we are also bookings for our Accessible Seating Area.



This is the first time early bird tickets have been available, with Lantern Parade organisers offering discounted tickets for the finale up until 25 May.

The finale is the culmination of the annual Lantern Parade and includes pyrotechnics, lanterns, entertainment and fireworks at Oakes Oval.

Tickets can be booked online at [www.lanternparade.com](http://www.lanternparade.com).

Council provides an Accessible Seating Area for those with mobility issues.

Interested people need to purchase a 'general admission' ticket and book a spot in the Accessible Seating Area. You are invited to bring a carer/support person, free of charge, who will be seated next to you.

Other family or friends need to hold a paid general admission ticket and will be seated in the grandstand behind the Accessible Seating Area.

The Accessible Seating Area includes front row seating for the finale and blankets/heaters to keep people warm and toasty. An accessible toilet is close by and there's a clearly marked drop-off area on Dawson Street.

**Spaces are limited so please book early. Phone 1300 87 83 87.**



## DEVELOPMENT CONSENTS ISSUED

### ENVIRONMENTAL PLANNING AND ASSESSMENT ACT

In accordance with the provisions of Section 101 of the Act and Clause 124 of the EP&A Regulation, notification is given that the undermentioned developments have recently been granted consent.

**02/771-4 54 Just Street, Goonellabah**

Section 96(1A) modification to alter civil works relating to earthworks, retaining wall design, and stormwater drainage associated with the development.

**15/68-2 39 Basil Road, Nimbin** Section 96(1) modification to remove Condition 15 stating that 41 Basil Road be connected to town water.

**15/76-2 209 Bangalow Road and 22 Valley View Drive, Howards Grass** Section 96(1A) modification to stage the approved subdivision into two stages and to amend associated conditions.

**15/300 9 Fredericks Road, Caniaba**

Vegetation removal of 71 native trees plus 1200 square meters of fragmented and isolated area of dry sclerophyll forest.

**15/335 7 Colleen Place, East**

Demolition of carport and construction of an additional residential unit to create a three-unit complex plus tree removal (amended plans).

**16/7 8 Sexton Road and 55 Dunoon Road, North Lismore**

Construction of an internal access road and associated earthworks.

**16/8 10 Elton Street, Girards Hill** Internal alterations including kitchen renovation and repair of retaining wall.

**16/18 90 Diadem Street, Lismore**

Change of use of a dwelling to a medical centre, associated infrastructure, tree removal and signage together with the demolition of a weatherboard shed.

**16/26 176 Skyline Road, South Road, Monaltrie** Farm shed.

**16/30 9a and 9b Asunta Place, Goonellabah**

Subdivision (boundary adjustment).

**16/65 145 Laurel Avenue, Lismore** Shade structure.

**16/78 14 Richardson Street, Goonellabah**

Inground swimming pool and retaining wall.

**16/79 14 Napier Street, Goonellabah** Dwelling.

**16/82 46 May Street, Dunoon** Shed.

**16/91 54a Ballina Road, Lismore** Advertising signage comprising 1 x 7m high monolith price board and canopy fascia signage.

**95/358-2 265 Martin Road, Larnook**

Section 96(1A) modification to extend the life of the quarry for an additional 10 years (Condition 12) and to establish a timeframe for the new Environmental Management Plan (Condition 8).

Details of applications and consents, together with conditions attached, may be inspected at Council's Corporate Centre during business hours or via DA Tracking at [www.lismore.nsw.gov.au](http://www.lismore.nsw.gov.au).

## DEVELOPMENT PROPOSALS

### ENVIRONMENTAL PLANNING AND ASSESSMENT ACT

As the consenting authority, Council has received the following development applications (and/or applications for modifications to existing consents) for consideration.

**DA NUMBER:** 16/100

**LOCATION AND DP LOT:** 6, 8, 9 and 11 Willow Tree Drive, 5 and 5A George Drive and 123 Taylor Road, Chilcotts Grass (Lot 301 DP 882629, Lot 9 DP 262461, Lot 3 DP 262461, Lot 1 DP 1185561, Lot 2 DP 1185561, Lot 9 DP 1202894 and Lot 10 DP 1202894).

**APPLICANT:** Newton Denny Chapelle.

**DESCRIPTION:** Subdivision to create 135 residential lots, four public reserves and one residue parcel including associated public road network and infrastructure services, bulk earthworks and vegetation management works and demolition/relocation of a dwelling.

**CLOSING DATE:** 8 June 2016.

**DA NUMBER:** 16/111

**LOCATION AND DP LOT:** 110 and 126 Magellan Street, Lismore and 152 Keen Street, Lismore (Lot 14 DP 867281, Lot 15 DP 867281 and Lot 11 DP 859167).

**APPLICANT:** Newton Denny Chapelle.

**DESCRIPTION:** Redevelopment of the former Lismore High School C-Block for the Lismore Regional Art Gallery inclusive of office space, combined event, function and workshop spaces, meeting rooms, commercial space (bookshop), café and outdoor quadrangle, awnings and associated infrastructure.

**CLOSING DATE:** 8 June 2016.

The above development applications and Statement of Environmental Effects may be inspected at Council's Corporate Centre, 43 Oliver Avenue, Goonellabah or via DA Tracking at [www.lismore.nsw.gov.au](http://www.lismore.nsw.gov.au). Further information relating to written submissions is available on Council's website. There are laws regarding the mandatory disclosure of political donations in relation to planning matters. Political donations disclosure reporting forms are available from the Department of Planning at [www.planning.nsw.gov.au](http://www.planning.nsw.gov.au).



## T2016/16: DISPOSAL OF ABANDONED VEHICLES

Lismore City Council is disposing of the following vehicles by tender:

- 1 x Daewoo Matiz hatchback, 2001 (gold)
- 1 x Toyota Camry sedan, 2003 (silver)
- 1 x Toyota Lexcen sedan, 1995 (white)
- 1 x Mercedes station wagon, 1989 (white)
- 1 x Toyota hatchback sedan, 1998 (white)
- 1 x Holden Astra sedan, 2002 (silver)

Vehicles will be available for inspection (no keys, vehicle sold as is, all vehicles are unregistered) from 9am to 9.30am on Friday, 13 May at Council's Impound Yard, located at the Lismore Recycling & Recovery Centre, 313 Wyrallah Road, East Lismore.

Bid sheets will be available on the day. Submissions will only be accepted in writing, and are required to be placed in the tender box in the foyer of Council's Corporate Centre, 43 Oliver Avenue, Goonellabah.

Tender submissions close at 2pm on Tuesday, 17 May 2016.

## RATES REMINDER

All Lismore ratepayers are reminded that your fourth rates instalment for the 2015/16 rateable year is due for payment on Tuesday, 31 May 2016.



## TRAFFIC ALERT UPDATE: DIADEM AND MAGELLAN STREETS, LISMORE

We are continuing to build the new roundabout at the intersection of Diadem and Magellan Streets near Lismore Shopping Square. Just a reminder that traffic control continues to be in place.

During the current stage of roundabout works, the EASTERN side of the intersection will be closed. Detours are in place via Hunter Street to the east.

We will keep you updated on the next stage of traffic control that will involve temporary closure of the whole intersection of Diadem Street and Magellan Street,

planned for the end of May. Stay tuned and thanks for your patience.



## CHELMSFORD BRIDGE CLOSURE

Council will close Chelmsford Bridge on Tuesday, 17 May from 9.30am to 12pm to undertake essential bridge abutment works.

We apologise to residents for this inconvenience and ask that you remain at home or go out for the duration, and there will be no through traffic between these times. We have a contingency should an emergency vehicle need to get through. Thanks everyone.



# T2016-15: DISPOSAL OF COUNCIL VEHICLES

Lismore and Richmond Valley councils are disposing of the following vehicles by tender:

## Lismore City Council

- 1 x Ford PK XL Ranger 4x4 single cab utility (tipping tray back)
- 1 x Mazda 6 Classic wagon
- 2 x Hyundai Santa Fe

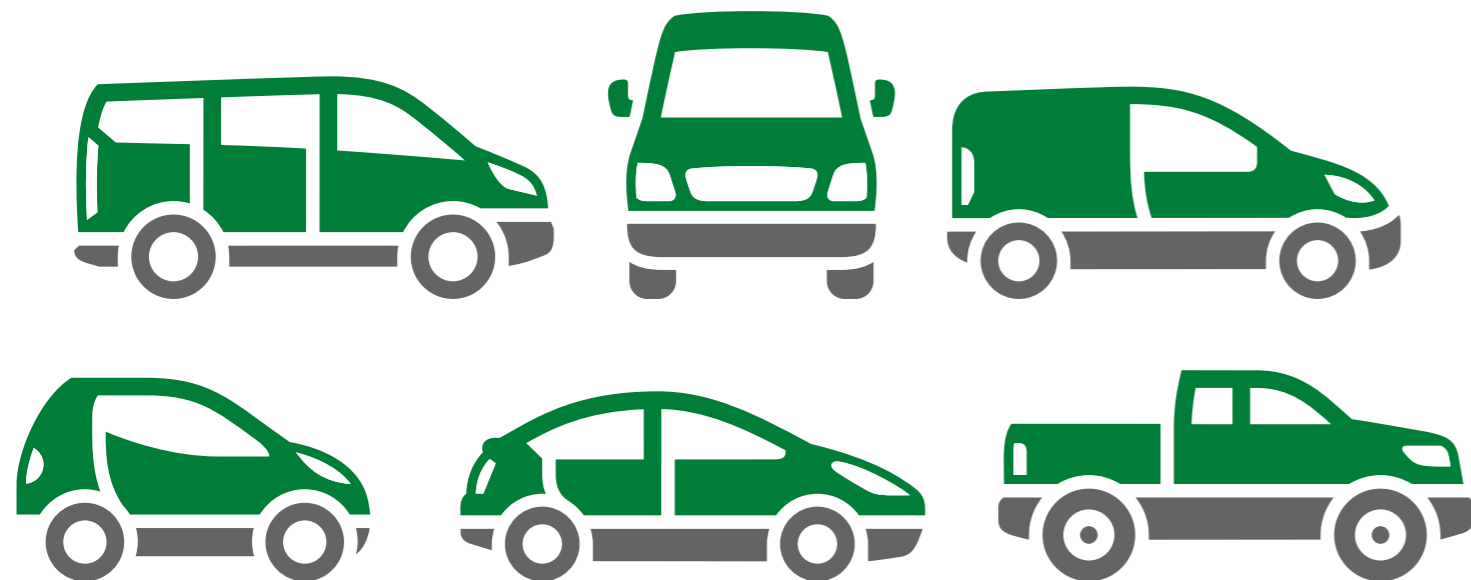
## Richmond Valley Council

- 1 x Ford Ranger 4x2 single cab chassis
- 1 x Isuzu D-Max 4x2 single cab chassis
- 1 x Holden Commodore VE Omega utility

Information and vehicles will be available for inspection (sorry, no test drives) from 11.30am to 1.30pm on Monday, 16 May at the Revolve Shop Carpark, located at the Lismore Recycling & Recovery Centre, 313 Wyrallah Road, East Lismore.

Bid sheets will be available on the day. Submissions will only be accepted in writing and must be placed in the tender box in the foyer of Council's Corporate Centre, 43 Oliver Avenue, Goonellabah.

Tender submissions close at 2pm on Thursday, 19 May 2016.



**THANK YOU!**

During National Volunteer Week (9-15 May) we wanted to say a huge THANK YOU to our wonderful volunteers.

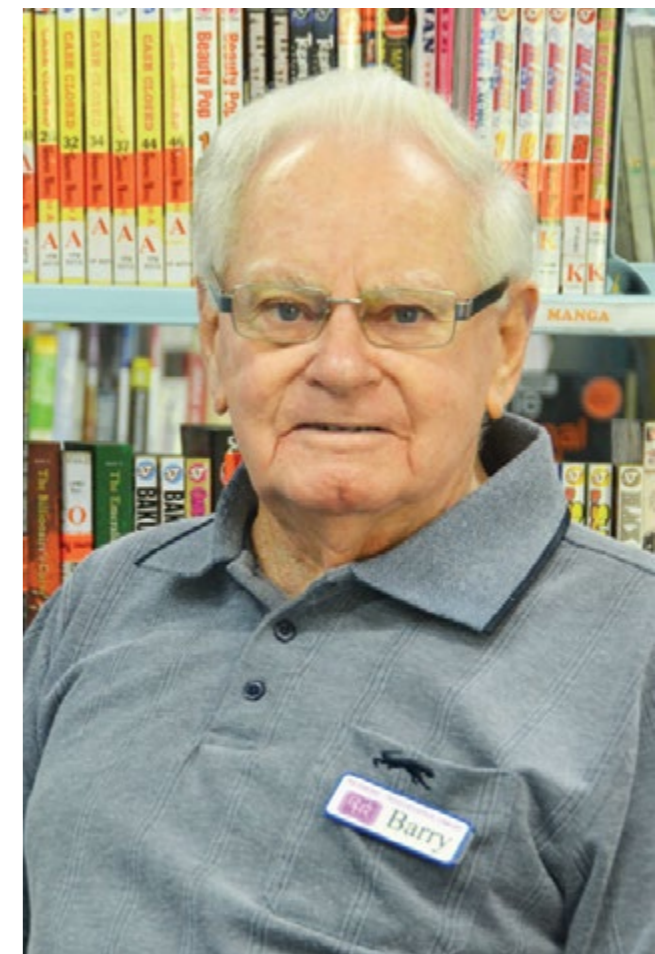
The theme for this year's celebration is *Give happy. Live happy.* And we certainly see that reflected in our volunteers, who love giving back to their community.

From our tireless library volunteers to the people who have joined our Community Panels, from the hundreds of sports enthusiasts who help make the Masters Games possible to members of our Aboriginal Advisory Group, we say a humble thank you.

Thank you for giving your time to enrich the lives of others and make our community a better place. Hats off to you all!

## YOUR COVER

Barry Davidson is one of the volunteers who make the cogs of our community keep turning. Barry, 85, has been volunteering with Lismore Friends of the Library for 20 years. He and his wife Joyce used to volunteer for Meals on Wheels, and he is a former member of the SES. During his lifetime in Lismore, Barry has had too numerous volunteer hats to mention. Library Assistant Annette McGrath summed up how important volunteers like Barry are beautifully: "If there were more Barrys in the world, we'd live in a much more caring and considerate world."







CONTACT US:  
**1300 87 83 87**

Lismore City Council's Corporate Centre  
is located at 43 Oliver Avenue, Goonellabah.

We are open Monday to Friday from 8.30am to 4.30pm.

Our postal address is PO Box 23A, Lismore NSW 2480.

You can email us at [council@lismore.nsw.gov.au](mailto:council@lismore.nsw.gov.au)



Find us on Facebook and  
YouTube or follow us on Twitter.



*Local Matters* is printed fortnightly on  
Australian-made, 100% recycled and  
carbon-neutral paper.