



LOCAL MATTERS

LISMORE CITY COUNCIL NEWS
ISSUE 68, 17 AUGUST 2016



WWW.LISMORE.NSW.GOV.AU



LOCAL GOVERNMENT ELECTION

VOTING INFORMATION

The 2016 local government election is on Saturday, 10 September and pre-poll voting commences on Monday, 29 August.

The pre-poll voting centre is located at 154 Molesworth Street, Lismore.

The hours of operation are:

- Monday to Friday, 29 August to 2 September, from 8.30am to 5.30pm.
- Saturday, 3 September, from 9am to 5pm.
- Monday to Thursday, 5-8 September, from 8.30am to 5.30pm.
- Friday, 9 September, from 8.30am to 6pm.

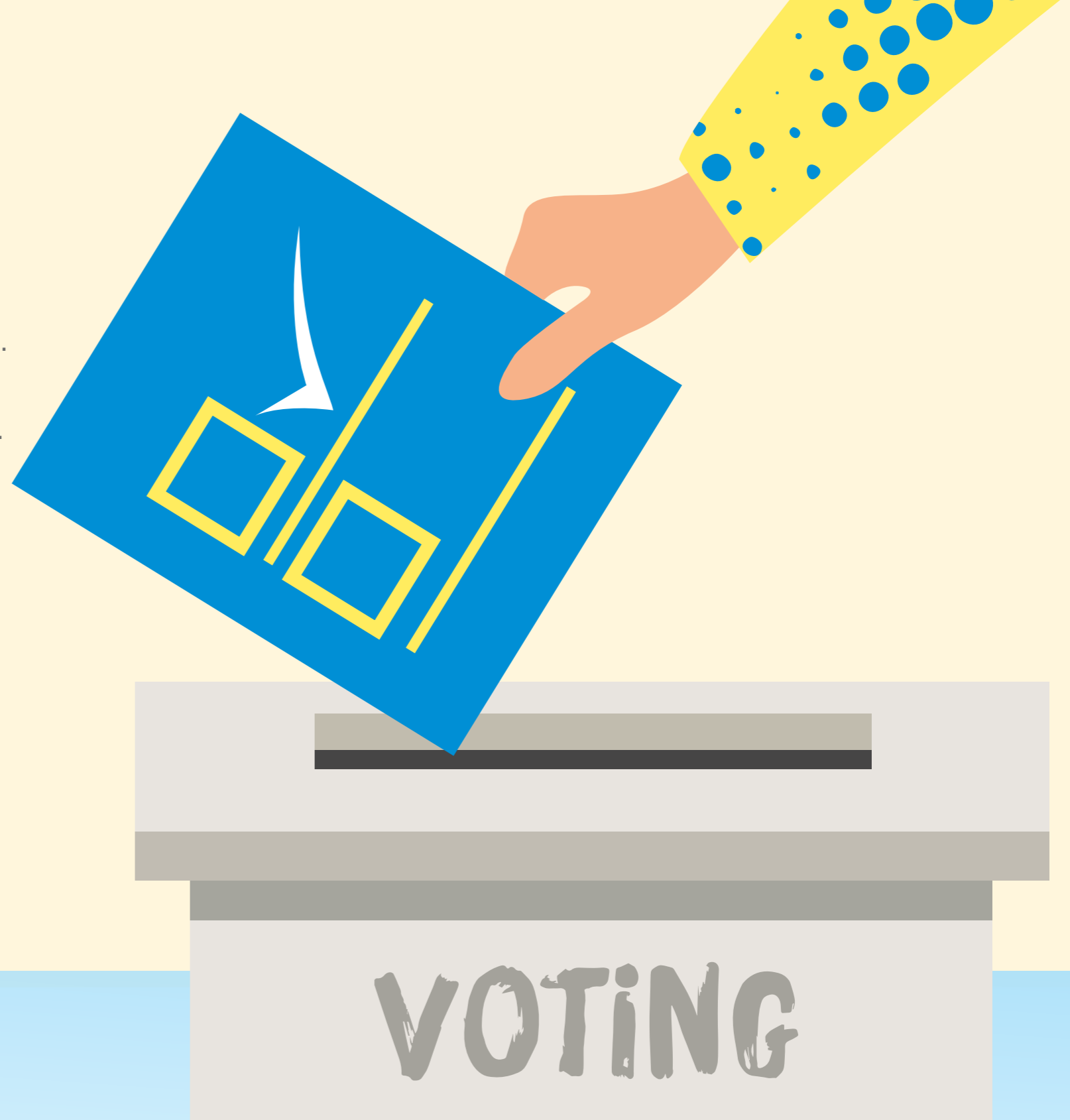
People should be aware there is no absentee voting for local government elections, and you must either pre-poll vote or vote on Saturday, 10 September within the Lismore Local Government Area (LGA).

Postal voting is available for those who will be away and cannot attend a pre-poll voting centre or vote within the LGA on election day. You can download a postal voting application form at www.votensw.info.

Following are the locations of polling booths that will be open for the 10 September election.

- Bexhill Hall
- Caniaba Public School
- Clunes Public School
- Dunoon Public School
- Eltham Public School
- Goolmangar School of Arts
- Goonellabah Community Centre
- Goonellabah Public School
- Lismore Heights Public School
- Lismore High School
- Lismore Public School
- Lismore South Public School

- Modanville Public School
- Nimbin Central School
- Richmond River High School
- Rosebank Public School
- St Paul's Memorial Hall, Lismore
- The Channon Hall
- Tregagle Public School
- Trinity Catholic College
- Woodburn CWA Rooms
- Wyrallah Public School



NEW GEOFF HANNAH EXHIBITION OPENS

Lismore Regional Gallery is launching a new exhibition this Saturday, 20 August featuring the latest work of master craftsman Geoff Hannah and more than 20 of his students.

In Glue and Dust we Trust is the first outing for Geoff's latest masterpiece, *The Chinoiserie Cabinet*.

Geoff Hannah is one of the finest cabinet-makers in the world, and a household name in Lismore. *The Hannah Cabinet*, exhibited in 2009, is one the most popular exhibitions in the history of the gallery. The masterpiece was the result of 5000 hours of labour and contains 34 fine timbers and veneers, 17 types of stone, four types of shell, and 23-carat gold leaf. It has 18 doors and 140 draws. These are no ordinary cabinets!

Hannah's new piece, *The Chinoiserie Cabinet*, incorporates Chinese bird and floral motifs crafted from wood, stone and 23-carat gold, with over 2000 hours in the making so far. This master work is accompanied by the artistic creations of his woodworking students, some of whom have studied with him for more than 20 years.

The exhibition also includes a documentary, *Secrets and Sawdust*, in which we meet a number of Geoff's talented and devoted students as they prepare for a major exhibition and learn some of the secrets behind the making of *The Chinoiserie Cabinet*.

In Glue and Dust we Trust runs from 20 August to 24 September. You can meet the man himself at a free event, *In Conversation: Geoff Hannah*, on Father's Day (Sunday, 4 September) from 12.30pm at the gallery.

The gallery is open Tuesday to Friday from 10am to 4pm and Saturdays from 10am to 2pm.



NEW WASTE VOUCHER SYSTEM LAUNCHED

Lismore City Council has launched its new electronic waste voucher system, which entitles all households to three free visits to the Lismore Recycling & Recovery Centre each year.

Residential owner occupiers and rental tenants in the Lismore Local Government Area are now invited to apply online. While Council encourages people to use the electronic system wherever possible, those with no computer access or email can apply in person or over the phone.

Residents can dispose of one ute or trailer load of waste in each visit, with the following maximum volumes accepted:

- 200 kilograms of mixed general waste (not sortable)
- 333 kilograms of self-sort waste (50% recoverable)
- 714 kilograms of green waste
- 1,666 kilograms or 1.6 tonne of scrap steel
- One gassed whitegood or two un-gassed whitegoods
- Five car/4x4 tyres or one truck tyre

People who bring more than these amounts will incur standard waste disposal charges, and no asbestos or commercial quantities of chemicals are allowed.

The new voucher system replaces the old method of four Tip Free Days and one voucher for each ratepayer annually.

To apply for a voucher visit www.northernriverswaste.com.au. You can also apply over the counter at our Corporate Centre at 43 Oliver Avenue, Goonellabah, or by phone on 1300 87 83 87.



FUN FOR ALL AGES AT THE LISMORE RECYCLING & RECOVERY CENTRE

Don't forget our huge day of fun activities for young and old at the Lismore Recycling & Recovery Centre this Saturday, 20 August.

The day includes the Lismore Recycled Market and a special Lismore Rainforest Botanic Gardens Open Day to celebrate Science Week.

The Recycled Market features innovative inventors and upcycling experts selling goods from shipping containers, plus our new Suitcase Showcase, where kids sell their upcycled creations from old suitcases. More kids are always welcome to join – simply register with Market Coordinator Robyn Kelly on 0418 272 685.

The Lismore Recycled Market has food and coffee for sale, live music, and this month children are invited to make recycled terrariums using organic compost.

Council staff will also be running tours of the Materials Recovery Facility (MRF) and newly expanded organics processing facility at 10am, 11am and 12pm.

The Lismore Rainforest Botanic Gardens Open Day will be held at the Environment Education Centre (on site at the tip) to celebrate National Science Week, which runs from August 13-21.

There will be lots of activities for kids including plant viewing under the microscope, catching water critters to assess water quality, displays by Friends of the Koala, plant potting with organic compost, walking trails to explore and much more.

Make a day of it and bring some morning tea or lunch (BBQs are available) to enjoy, or pop over to the market for a bite to eat.

Both the Lismore Recycled Market and the Botanic Gardens Open Day run from 9am to 1pm and all activities are free.

There is a free shuttle bus picking up and dropping off at Lismore Library and Wyrallah Road Public School. Pick-up from the library at 9am, 10am and 11am, and from the school at 9.15am, 10.15am and 11.15am. The shuttle returns at 9.45am, 10.45am, 11.45am and 12.45pm.

The Lismore Rainforest Botanic Gardens Open Day is supported by the Northern Rivers Science Hub and Inspiring Australia as part of National Science Week.



RATTY LOOKING BRIDGE GETS MURAL MAKEOVER

You may have noticed these guys, dubbed the River Rats, who now adorn the humpy bridge (otherwise known as the Robert White Bridge) in South Lismore.

The South Lismore Bowling Club commissioned local graffiti artist Corey Mills to do the work in an effort to reduce the amount of graffiti occurring on the bridge adjacent to the bowling greens.

Council was happy to provide permission and we want to remind people that we are always keen to hear from residents or groups who would like to beautify or spruce up infrastructure near their home, business or clubhouse.

Greg McMahan, the South Lismore Bowling Club men's bowls president, said it made the bridge look "a heck of a lot better".

"The River Rats is what the social club bowlers are nicknamed and the bridge faces our main games area, so all the visiting teams see it, and they love it – they think it's great," Greg explained.

"We wanted to promote the club and tidy up the bridge – now, rather than a bare concrete panel with a girder, we have a lovely mural."

If you've got an idea and need Council permission, phone Martin Soutar on 1300 87 83 87.



REGISTER YOUR GARAGE SALE FOR SECOND HAND SATURDAY

If you are thinking of a spring clean and want to make some bucks from your old stuff, why not join Second Hand Saturday on 24 September?

Coordinated by North East Waste and Northern Rivers councils, the annual event is designed to promote the reuse and recycling of household goods and furniture with hundreds of garage sales held simultaneously across the Northern Rivers.

It's free to register and your garage will be promoted in local newspapers and online in the lead-up to the event.

"Second Hand Saturday is a fantastic opportunity to give unwanted belongings a second life, meet the neighbours and make some extra money," Second Hand Saturday Coordinator Linda Tohver said.

"Or you might want to join forces with your friends, family or neighbours and hold a joint garage sale. We also welcome fundraising activities from community groups, schools and churches."

People can sell everything from tinnies to antiques to clothes and bric-a-brac.

For more information and registration, visit www.secondhandsaturday.com.au or sign up to the Facebook page (search 'mysecondhandsaturday').





DEVELOPMENT CONSENTS ISSUED

ENVIRONMENTAL PLANNING AND ASSESSMENT ACT

In accordance with the provisions of Section 101 of the Act and Clause 124 of the EP&A Regulation, notification is given that the undermentioned developments have recently been granted consent.

10/494-3 26 Sandy Point Road, Monaltrie

Dwelling, detached garage and carport.

14/198-3 22 Carramar Drive, Goonellabah Section 96(1A)

modification to enclose the double carport to create a garage.

14/212 6A Grace Road, Bexhill Change of use from shed to a dwelling

14/236-2 214 Molesworth Street, 9 and 11 Market Street, Lismore
Section 96(2) modification of consent to install a padmount substation, modify the southern elevation, reduce carparking onsite by one space and amend condition 1.

15/135 25 Hurley Street, Lismore Replace existing laundry and covered outdoor area with new laundry and larger covered outdoor area.

15/165 224 Invercauld Road and 1 Florence Street, Goonellabah
Subdivision to create 134 residential allotments, one open space allotment, construction of internal roads, stormwater treatment, drainage features, removal of vegetation, landscaping and associated infrastructure.

15/170 78, 80 and 82 Cullen Street, Nimbin Construction of a tourist and visitor accommodation development incorporating 24 accommodation rooms, manager's residence, on-site car parking, landscaping, tree removal, civil works and includes the construction of six new car spaces and the line marking of 76 car spaces within the adjacent Council-owned public car park.

15/216-2 138 Elliot Road, Clunes

Section 96(1A) modification of consent to amend dwelling footprint.

15/223-2 73A Keen Street, Lismore

Section 96(1) modification to delete condition 7 and modify condition 24.

16/23-2 50 Cullen Street, Nimbin

Section 96(1A) modification to condition 11.

16/101 1585 Bangalow Road, Clunes Dwelling with a building line variation to 19m to Bangalow Road.

16/141 7 Janice Court, Bexhill Dwelling.

16/172 1 Janice Court, Bexhill Garage and carport.

16/179 12 Donaghue Street, Dunoon Dwelling and retaining walls.

16/180 735 Ballina Road, Goonellabah Dwelling.

16/184 32 Norwood Avenue, Goonellabah

Deck addition, removal of existing window and replacement with a sliding door and modifications to internal stairs.

16/188 118 Fairfull Road, Numulgi

Re-sited dwelling with alterations and additions.

16/189 22 Sanctuary Court, Goonellabah Awning (unenclosed).

16/190 6 Hurford Place, East Lismore

Deck with insulated roof and glass balustrade, and install new sliding door with a building line variation to 4m to Hurford Place.

16/194 12 Myall Court, Caniaba Dwelling.

16/195 500 Duncan Road, Dunoon Inground swimming pool.

16/196 24 Brooker Drive, Goonellabah Shed.

16/210 84 Northcott Road, South Gundurimba Dwelling.

16/212 23 Lomandra Avenue, Caniaba Dwelling.

Details of applications and consents, together with conditions attached, may be inspected at Council's Corporate Centre during business hours or via DA Tracking at www.lismore.nsw.gov.au.

DEVELOPMENT PROPOSALS

ENVIRONMENTAL PLANNING AND ASSESSMENT ACT

As the consenting authority, Council has received the following development applications (and/or applications for modifications to existing consents) for consideration.

DA NUMBER: 16/234

LOCATION AND DP LOT: 170 Martin Road, Larnook (Lot 2 DP 792015).

APPLICANT: RCS Group Australia.

DESCRIPTION: Rural Landsharing Community consisting of 12 dwelling sites.

CLOSING DATE: 31 August 2016.

The above development applications and Statement of Environmental Effects may be inspected at Council's Corporate Centre, 43 Oliver Avenue, Goonellabah or via DA Tracking at www.lismore.nsw.gov.au. Further information relating to written submissions is available on Council's website. There are laws regarding the mandatory disclosure of political donations in relation to planning matters. Political donations disclosure reporting forms are available from the Department of Planning at www.planning.nsw.gov.au.



DISPOSE OF UNWANTED CHEMICALS

Keeping old or unwanted agricultural and veterinary chemicals stored in your shed presents an unnecessary risk to people, livestock, pets and the environment.

Don't leave them lingering for the next person, manager or generation to deal with – book them in now for ChemClear's upcoming collection.

Farmers and other agvet chemical users have the opportunity to dispose of unwanted chemicals in Lismore this October.

This year's collection will be ChemClear sixth collection in NSW since the program kicked off in 2003. Since then, more than 136 tonnes of chemical has been collected from NSW for safe disposal.

Registrations are now being taken from farmers, golf courses, schools, bowling greens, chemical distributors, and turf and pest management organisations. Interested people need to take an inventory and register with the program before close of business on 2 September.

“Before this stewardship program kicked off farmers and other chemical users across Australia had very limited opportunities to dispose of their unwanted, unstable, inherited and unknown chemicals,” ChemClear's National Manager Lisa Nixon said.

“The containers continued to sit and gather dust in chemical sheds across Australia. Simply storing the chemicals isn't a long-term viable solution, especially for those farmers and businesses who are audited against quality management systems, certifications or workplace safety programs on an annual basis.”

The chemicals ChemClear collects are classified as either Group 1 or Group 2. Group 1 are collected free of charge to chemical users.

Group 2 chemicals include unlabelled, out of date, deregistered or mixed chemicals and chemicals from non-participating manufacturers. Group 2 products attract a fee per litre charge for disposal.

To register your unwanted chemicals phone the hotline on 1800 008 182 or visit www.chemclear.com.au.



WEED CONTROL NOTIFICATION: GENERAL

Whenever Council prepares to reseal an urban road, we also need to undertake maintenance in the street and treat weeds. We will always have signs in place advising of 'Spraying in Progress'.

From 17 August to 30 November 2016 the spray being used will be Weedmaster Duo. There is no withholding period for this product, which means it is safe to walk on or near straight after use.

If you have any concerns when work of this nature is happening near your home, please contact either Jamie Davis or Shane Beaumont on 1300 87 83 87.

WEED CONTROL: HIGHWAY TREATMENTS

We will be spraying guide posts and guard rails on Bangalow Road and the Bruxner Highway/Ballina Road from 17 August to 30 December 2016.

We will be using Weedmaster Duo, for which there is no withholding period, meaning it is safe to walk on or near straight after use.

For more information, contact Jamie Davis on 1300 87 83 87.

RATES REMINDER

All Lismore ratepayers are reminded that your first rates instalment for the 2016/17 rateable year is due for payment on Wednesday, 31 August 2016.



CONWAY STREET ROADWORKS ON TRACK

Despite losing a couple of days to rain, the \$700,000 rehabilitation of Conway Street remains on track.

We are repairing Conway Street between its Keen and Dawson Street intersections in the CBD in two stages and hope to be finished in time for the September school holidays.

During stage one, we have closed Conway Street between Farmer Charlies and Dawson Street, and in stage two we will undertake work at the Keen Street intersection.

It is business as usual for Farmer Charlies, Brad's Butchery and Network Video, and access is via McLennan Lane at the back of the complex. The Conway Street entrance will reopen in late August.

We know this is a busy area where people shop, and we would like to thank people for their patience while we do these works. The access at the back of Farmer Charlies is working well with plenty of parking available, and we encourage people to go about their shopping as they normally would.

We will continue to keep you updated with detour information in upcoming editions of *Local Matters* and with onsite message boards.

Wyrallah and Tuntable works

We have started fixing Tuntable Falls and Gungas Road around their Tuntable Creek Road intersection near Nimbin village. Traffic delays will be in place on weekdays over the next 12 weeks.

We are also continuing roadworks on Wyrallah Road near the Tucki Tucki cemetery. Expect traffic delays on weekdays over the next six weeks.

Fawcett Street bridge inspection

Roads and Maritime Services will be undertaking an inspection of Fawcett Bridge and closing car parks underneath the bridge all day on Sunday, 28 August. The inspection will continue into the rest of the week however the car park will not be affected.



T2016-25: ASPHALT PLANT RAW MATERIALS FINE SAND AND ARGILLITE DUST

Council is inviting submissions from suitably qualified businesses and individuals for supply of various asphalt plant raw materials: fine sand and argillite dust.

These raw materials will be used in our asphalt plant, located at Nimbin Road, Blakebrook, close to Lismore NSW.

The purpose of this tender is to compile a 'Various Asphalt Plant Raw Materials Supplier Panel' of approved providers to Council. The contract is for a period of one year (12 months from engagement) with an option for an additional 24 months.

Submissions close at 2pm on Thursday, 14 September 2016.

Interested parties are required to register at Council's eProcurement portal www.tenderlink.com/lismore to access relevant documents. Submissions may also be lodged at this site in the electronic tender box.

For further information or assistance, phone the Tenderlink helpdesk on 1800 233 533.

YOUR COVER

Geoff Hannah is a world renowned cabinet-maker from Lismore. He started his trade at Lismore-based woodworking company Brown and Jolly in 1963. In the mid-80s he chose to work instead on his own detailed and complex works, which have become world famous. His latest exhibition, *In Glue and Dust we Trust*, features his latest work and the work of more than 20 of his students. More details inside.

All Geoff Hannah images by Geoff Saunders.





CONTACT US:
1300 87 83 87

Lismore City Council's Corporate Centre
is located at 43 Oliver Avenue, Goonellabah.

We are open Monday to Friday from 8.30am to 4.30pm.

Our postal address is PO Box 23A, Lismore NSW 2480.

You can email us at council@lismore.nsw.gov.au



Find us on Facebook and
YouTube or follow us on Twitter.



Local Matters is printed fortnightly on
Australian-made, 100% recycled and
carbon-neutral paper.