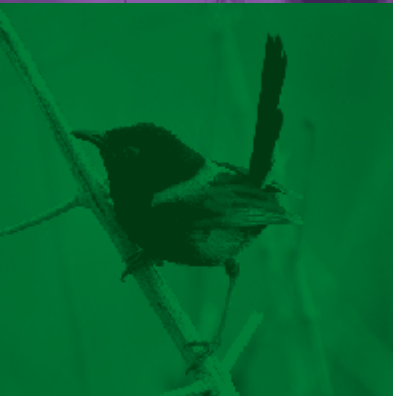




LOCAL MATTERS

LISMORE CITY COUNCIL NEWS
ISSUE 69, 31 AUGUST 2016



WWW.LISMORE.NSW.GOV.AU



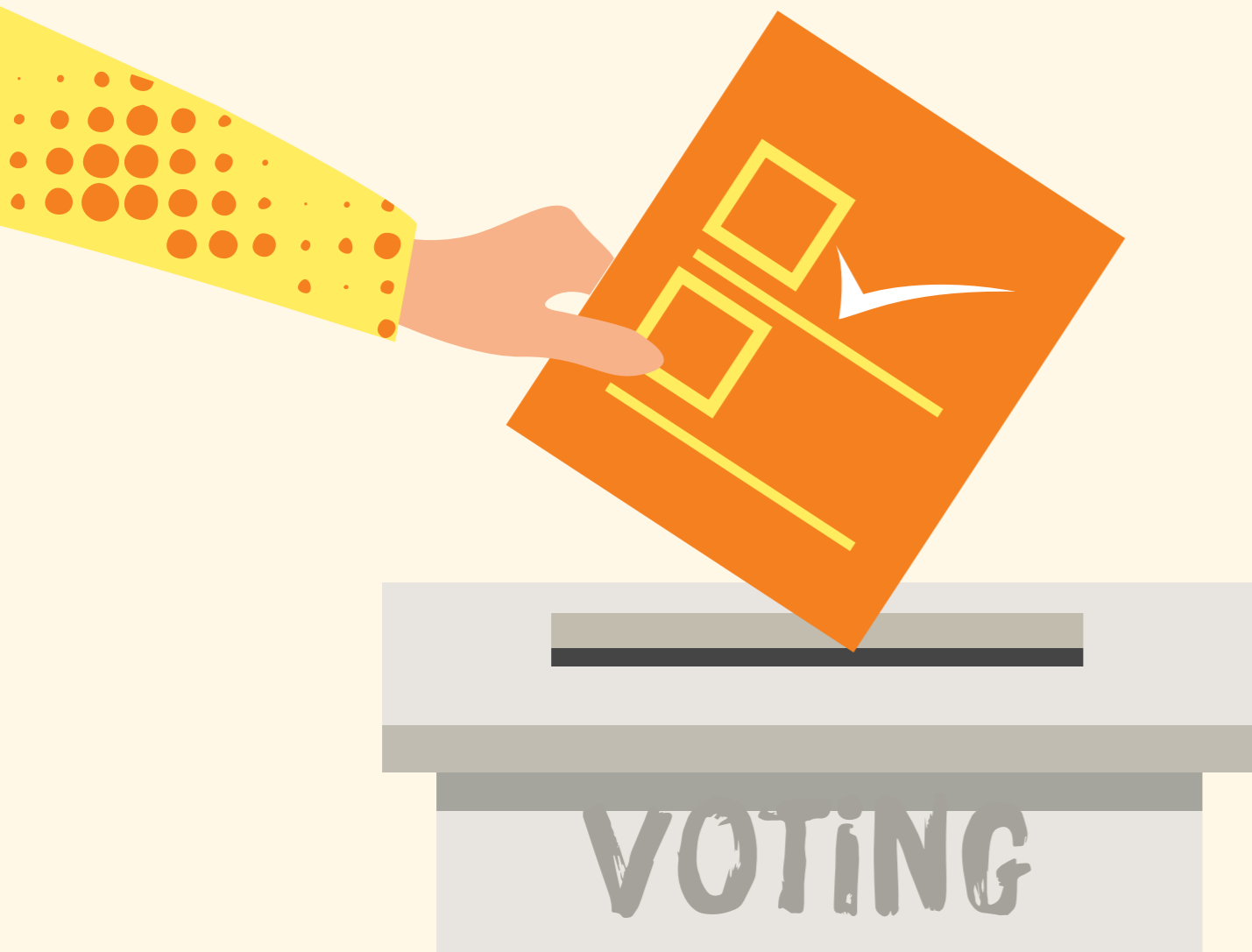
MAKE YOUR VOTE COUNT ON ELECTION DAY

The 2016 local government election is fast approaching – make sure your vote counts on Saturday, 10 September.

A full list of candidates is available on the NSW Electoral Commission website at www.votensw.info or phone 1300 135 736. There are information sheets for all candidates online.

Pre-poll voting opened on Monday, 29 August and continues until 6pm the night before the election. The pre-poll voting centre is located at 154 Molesworth Street, Lismore, and the opening hours are:

- Monday to Friday, 29 August to 2 September, from 8.30am to 5.30pm.
- Saturday, 3 September, from 9am to 5pm.
- Monday to Thursday, 5-8 September, from 8.30am to 5.30pm.
- Friday, 9 September, from 8.30am to 6pm.



There is no absentee voting for local government elections, which means you must either pre-poll vote or vote on Saturday, 10 September within the boundaries of the Lismore Local Government Area (LGA).

Postal voting is available for those who will be away and cannot attend a pre-poll voting centre or vote within the LGA on election day. You can download a postal voting application form at www.votensw.info.

If you are unsure of anything or need any assistance, visit www.votensw.info or phone 1300 135 736.

For enquiries in languages other than English phone the NSW Electoral Commission interpreting service on 13 14 50, or for hearing and speech impaired enquiries, phone via the National Relay Service on 13 36 77.

Polling booth locations for the local government election on Saturday, 10 September 2016 are as follows:

- Bexhill Hall
- Caniaba Public School
- Clunes Public School
- Dunoon Public School
- Eltham Public School
- Goolmangar School of Arts
- Goonellabah Community Centre
- Goonellabah Public School
- Lismore Heights Public School
- Lismore High School
- Lismore Public School
- Lismore South Public School
- Modanville Public School
- Nimbin Central School
- Richmond River High School
- Rosebank Public School
- St Paul's Memorial Hall, Lismore
- The Channon Hall
- Tregeagle Public School
- Trinity Catholic College
- Woodburn CWA Rooms
- Wyrallah Public School

INVITATION TO COMMUNITY PLANNING DAY

AT JIGGI HALL

Earlier this year, Council held two community planning days for its Community Panels project in the 'West' area, to gather community aspirations and ideas to formulate a Community Plan.

The 'West' locality includes Bentley, Blakebrook, Booerie Creek, Bungabbee, Goolmangar, Fernside, Jiggi, Leycester, North Lismore, Rock Valley, Spring Grove and Tuncester communities. These planning days were held at Rock Valley and Goolmangar halls.

The input provided by the Rock Valley community has been collated however the Goolmangar Hall session was poorly attended. Before finalising the Community Plan for the West locality, we want to hold another planning day to ensure projects developed reflect the overall community.

In response to feedback regarding boundaries, and in recognition of the connections between certain communities, we have also adjusted the 'West' boundary to incorporate Jiggi.

The planning days are essential to help us develop a comprehensive Community Plan for these areas that includes improvements, projects, events and other community activities that can be undertaken with Council support.

A Community Panel of local residents will be formed to oversee implementation of the plan once it is finalised.

Anyone in the localities listed above is welcome to join the upcoming planning day, and refreshments are provided to keep everyone fed and watered while we brainstorm ideas for community projects.

The planning day is on Saturday, 17 September from 9.30am to 3.30pm at Jiggi Hall. All ages are welcome. RSVP to Jacqui Kirchen on 1300 87 83 87.

SUSTAINABLE HOUSE DAY EXPO

The theme may be tiny homes, but there will be some big ideas showcased at the 2016 Sustainable House Day Expo on Saturday, 17 September at Mullumbimby Civic Hall.

The annual expo includes a display of more than 40 entries in the 2016 Tiny Homes Design Competition, with some amazing creations from both professional and amateur designers on how to live small, simple and sustainable. A key highlight of the day will be the announcement of winners and the award ceremony.

The popular free event also includes a new 'Speed Date a Sustainable Designer' segment where you can meet and talk to designers and get free expert advice on how to build for sustainability and what methods and techniques provide the best results.

Visitors can also explore the Green Building and Living Trade Show, where local businesses will be showcasing eco-friendly products and services. There is also a Love Food Hate Waste cooking demonstration, loads of information for anyone interested in sustainable living, and food vans and refreshments on-site.

The Sustainable House Day Expo runs from 10am to 3pm. For more information visit www.sustainablehousedaynr.org.



JOIN THE 2016 CARP MUSTER

To help improve river health and clear local rivers of carp, Casino RSM Social Fishing Club hosts the annual Carp Muster.

The event covers the Wilsons, Richmond and Bungawalbin catchments, with \$4000 in prizes for keen fishers who can help combat this ongoing environmental problem.

Carp stir up silt and make the river dirty. This introduced species also eats the roots of riverbank trees, causing erosion, and is now the dominant local river species, outnumbering native fish. These guys are so bad, it's illegal to catch one and throw it back.

The 2016 Carp Muster runs from 17-18 September, with weigh-in on the Sunday from 8am to 2pm behind the Casino RSM Club. Registration is \$20 adults, \$15 pensioners and \$10 for school students.

Register at www.casinorsmfishingclub.webs.com.

SECOND HAND SATURDAY REMINDER

Keep your diary free on Saturday, 24 September for Second Hand Saturday.

Hundreds of people will be holding garage sales across the North Coast and anyone who registers receives free publicity in local papers and online in the lead-up to the event.

Register now at www.secondhandsaturday.com.au.

POSITIONS VACANT

Position Title	Salary	Closing Date
Development Assessment Officer (Planning)	\$1,281.70 to \$1,473.96 per week + super	4/9/16
Learn to Swim Instructor (part-time) x 2	\$21.74 to \$23.05 per hour + super	4/9/16

For further information or to apply, visit www.lismore.nsw.gov.au.

FINAL LANDHOLDER FIELD DAY TARGETS CATTLE FARMERS

The final Rural Landholder Initiative field day for 2016 is coming up on Saturday, 17 September.

The Boatharbour Beef Grazing and Biodiversity Field Day will focus on Wilsons River catchment revegetation, maintenance and grazing management in riparian areas.

The day is designed for local cattle graziers in the Wilsons River catchment

that wish to improve water quality and habitat on their properties. The day is being hosted by Boatharbour farmer Keith Graham, who runs a 55-hectare working beef cattle farm on the Wilsons River.

The free field day runs from 9am to 2pm with morning tea and lunch included. RSVP is essential to our Environmental Strategies Officers on 1300 87 83 87.

There have been 11 landholder field days throughout 2016 as part of the Rural Landholder Initiative, which is part of Council's Biodiversity Management Strategy.

As well as these field days, the Rural Landholder Initiative included the development of educational resources for local landholders including beef graziers, dairy farmers, orchardists (e.g. macadamia growers), floodplain croppers (e.g. sugar cane growers) and 'lifestyle' landholders (e.g. non-commercial rural landholders).

These booklets include a Farm Health Assessment Tool so that landholders can self-assess if their practices are out-dated, common place or best practice.

To access educational materials or see videos of previous field days, visit www.lismore.nsw.gov.au.



PUBLIC INVITED TO CREATE CBD ARTWORK

Lismore residents are invited to help create the largest ever sand and soil art sculpture on the North Coast as part of an event to promote child protection.

The event – Lismore Plays its Part! Stronger Communities, Safer Children – will be held on Saturday, 3 September for National Child Protection Week and includes entertainment and creative activities for adults and children.

This includes joining artist Karma Barnes to create a huge mandala-type sculpture made from coloured soil and sand pigments.

“Collaborative public art is a great way to draw public attention to social issues as well as a great experience for people to work together,” Barnes said.

According to Louise Collins from YWCA NSW, the event is a combined community effort to raise awareness about the role everyone plays in keeping children and young people safe and well.

“We’ve chosen to invite the whole Lismore community to create a huge sand and soil installation to symbolise our commitment to providing the best possible environment for children so they can grow and thrive,” she said. “We can all play our part in creating a safe, child-friendly community.”

The event is supported by the Lismore Business Panel and will take place from 12-5pm on the roundabout at the junction of Magellan and Keen streets in the city centre.

Road closures will be in place from midday to create a shared space and carnival atmosphere surrounding the large art installation.

People of all ages are invited to participate in building the artwork and all activities are free. The afternoon includes live music, dance and theatre performances plus a sausage sizzle, jumping castle, face painting, creative children’s activities and much more.



CONWAY STREET ROADWORKS: STAGE TWO BEGINS

Stage two of our Conway Street road rehabilitation began this week between the Keen Street intersection and Farmer Charlies driveway.

The Dawson Street end is now complete and access to Farmer Charlies, Brad’s Butchery and Network Video is back to normal from this end of Conway Street.

We have now closed Conway Street at its Keen Street and Lockett Street intersections and we hope to have this stage complete in time for the September school holidays. While the temporary closure is in place, Lockett Street will only be accessible from McLennan Lane to the south. Pedestrian detours will also be in place in Conway Street while we fix up sections of footpath and kerb and gutter.

We will continue to update our message boards on site, so please follow all traffic control. Our thanks to the community for your patience while we undertake these works – we are on the home stretch!





DEVELOPMENT CONSENTS ISSUED

ENVIRONMENTAL PLANNING AND ASSESSMENT ACT

In accordance with the provisions of Section 101 of the Act and Clause 124 of the EP&A Regulation, notification is given that the undermentioned developments have recently been granted consent.

14/306-2 73 and 77 Krauss Avenue, Loftville: Section 96(2) modification to amend the development into two clearly identified stages (Stage 1 and 2). Amendments to conditions 1, 9, 16, 43, 47, 49 and 51.

15/94-2 4 Holland Street, Goonellabah: Section 96(1A) modification to amend the Section 94 levies applied.

15/124-2 224 Humpty Back Road, McLeans Ridges: Section 96(1A) modification to amend the floor plan, reducing the total floor area.

15/324-2 5 Acacia Avenue, Goonellabah: Section 96(1A) modification to construct the retaining wall from loose lay blocks, increase the building line variation to zero, non-construction of carport and amend shed location.

16/45 11 and 15 Misty Valley View, Goonellabah: Staged subdivision to create 82 residential lots and a residual lot with associated public road, infrastructure services, bulk earthworks, tree removal and vegetation management works. The proposal constitutes integrated development in accordance with S91 of the *Environmental Planning and Assessment Act 1979*. Approval from NSW Office of Water is required in accordance with the *Water Management Act 2000*, and approval from *NSW Rural Fires Act 1997*. The consent authority is Lismore City Council.

16/119 38 Habib Drive, South Lismore: Change of use of an existing industrial unit to light industry being kitchen cabinet manufacturing.

16/129 360 Crofton Road, Nimbin: Additional five cabins to existing motel.

16/155 2 Wardell Street, South Lismore: Change of use from a building materials recycling yard to a depot.

16/156 13 Heather Avenue, Goonellabah: Detached dual occupancy and strata subdivision with a building line variation to 3.7m to Heather Avenue.

16/170 92 Woodlark Street, Lismore: Commercial premises comprising hairdressers and beauty salon.

16/183 6 Rainforest Drive, Eltham: Covered deck.

16/197 167 Cowlong Road, McLeans Ridges: Patio roof.

16/207 102 Laurel Avenue, Lismore: Roof over existing carpark with a building line variation to 4.2m to Laurel Avenue.

16/208 76 Nielson Street, East Lismore: Enclosure of part of an existing open deck to create a gaming room.

16/209 114 Connor Road, Tregeagle: Alterations and additions to existing dwelling and garage with building line variation.

16/211 136 Grennan Road, Tregeagle: Additions including a patio, room and bathroom.

16/218 19 Rudgley Road, Caniaba: Dwelling and shed.

16/219 19 Ankana Crescent, Goonellabah: Covered deck.

16/228 43 Pagottos Ridge Road, North Lismore: Shed.

16/230 12 Duncan Road, Numulgi: Inground swimming pool.

Details of applications and consents, together with conditions attached, may be inspected at our Corporate Centre during business hours or via DA Tracking at www.lismore.nsw.gov.au.

OFFICE AND WORKSHOP SPACE TO RENT

Goonellabah Community Centre

Lismore City Council is looking for a community-based service provider to lease office and workshop space in Goonellabah. The rooms are located within the Goonellabah Community Centre situated at 27 Oliver Avenue, Goonellabah.

The available office area (162 square meters) consists of six interconnected spaces, including four offices and one small meeting room with a kitchenette, plus an attached workshop garage, and a fenced area of around 57 square meters for storage of vehicles or equipment.

The rent will be similar to the other tenants currently in the centre and rental costs will be provided on application. The other tenants in the building are Meals on Wheels, the Goonellabah Library and part-time occupants St Carthage's Senior Day Club.

The Goonellabah Community Centre has a large dividable meeting room for hire to the public, which could also be utilised by the new tenants for a small fee.

For further information or to arrange an inspection, phone our Contracts and Property Services Coordinator Ross Davies on 1300 87 83 87.



ON PUBLIC EXHIBITION

General Amendments to Lismore Local Environmental Plan 2012

1 September to 30 September 2016

Council resolved to support a planning proposal for the third round of general amendments to Lismore Local Environmental Plan 2012 at its ordinary meeting of 8 March 2016 in accordance with the *Environmental Planning and Assessment Act 1979*.

NSW Planning and Environment issued a Gateway Determination (preliminary approval) on 13 May 2016.

The planning proposal includes the following minor housekeeping amendments to:

- The Land Zoning Map with consequential amendments to the Lot Size Map and/or the Height of Buildings Map;
- The Lot Size Map;
- The Heritage Map with consequential amendments to Schedule 5 – Environmental Heritage;
- The Land Use Table;
- Clause 4.2C Erection of dual occupancies (detached) in Zone RU1; and
- Clause 4.2D Exceptions for minimum subdivision lot size for lot boundary adjustments in Zone RU1.

The Minister for Planning has delegated the making of this LEP to Lismore City Council under section 59 of the *Environmental Planning and Assessment Act 1979*.

Copies of the draft amendment are available at our Corporate Centre, 43 Oliver Avenue, Goonellabah, and at www.lismore.nsw.gov.au.

Submissions outlining grounds of objection or support can be made online, posted to the General Manager, Lismore City Council, PO Box 23A, Lismore, NSW 2480, or emailed to council@lismore.nsw.gov.au.

For enquiries, phone our Senior Strategic Planner Greg Yopp on 1300 87 83 87.



ON PUBLIC EXHIBITION

Planning Proposal to amend the Lismore Local Environmental Plan at 506 Caniaba Road, Caniaba

1 September to 19 September 2016

At its ordinary meeting on 14 June 2016, Council resolved to support a planning proposal to amend the Lismore Local Environmental Plan (LEP) 2012 to rezone land at 506 Caniaba Road, Caniaba, and change the LEP building height and minimum lot size in accordance with the *Environment Planning and Assessment Act 1979*.

The site is currently in the RU1 Primary Production zone. The planning proposal is to amend the Lismore LEP 2012 to rezone the site to R5 Large Lot Residential. A minimum lot size of 5,000m² is proposed with a maximum building height of 8.5m to enable future large lot residential subdivision.

On 12 July 2016, the Department of Planning and Environment issued a Gateway Determination on the condition that an assessment of bushfire risk and Aboriginal and European cultural heritage be undertaken. The Minister for Planning has delegated finalisation of the LEP to Council.

Copies of the planning proposal, Gateway Determination and associated material are available at our Corporate Centre, 43 Oliver Avenue, Goonellabah, and at www.lismore.nsw.gov.au.

Submissions outlining grounds of objection or support can be made online, posted to the General Manager, Lismore City Council, PO Box 23A, Lismore, NSW 2480, or emailed to council@lismore.nsw.gov.au.

For enquiries, phone our Strategic Planner Sally Slater on 1300 87 83 87.



ON PUBLIC EXHIBITION

Planning Proposal to amend the Lismore Local Environmental Plan at 95 Breckenridge Street, Wyrallah

1 September to 19 September 2016

At its ordinary meeting of 8 March 2016, Lismore City Council resolved to support a planning proposal to amend the Lismore Local Environmental Plan (LEP) 2012 to rezone part of the land at 95 Breckenridge Street, Wyrallah, and change the LEP building height and minimum lot size in accordance with the *Environmental Planning and Assessment Act 1979*.

The site is currently in the RU1 Primary Production zone. The planning proposal is to amend the Lismore LEP 2012 to rezone 1.28 hectares of the land to R5 Large Lot Residential. A minimum lot size of 3,000m² is proposed to apply to the R5 zone along with a maximum building height of 8.5m. The objective of the planning proposal is to enable future large lot residential subdivision of the site.

On 21 March 2016, the Department of Planning and Environment issued a conditional Gateway Determination. Pursuant to the Determination, an assessment of Aboriginal and European cultural heritage significance has been undertaken. The finalisation of the LEP has been delegated to Council.

Copies of the planning proposal, Gateway Determination and associated material are available at our Corporate Centre, 43 Oliver Avenue, Goonellabah, and at www.lismore.nsw.gov.au.

Submissions outlining grounds of objection or support can be made online, posted to the General Manager, Lismore City Council, PO Box 23A, Lismore, NSW 2480, or emailed to council@lismore.nsw.gov.au.

For enquiries, phone our Strategic Planning Coordinator Paula Newman on 1300 87 83 87.



DARREL CHAPMAN FUN RUN: TEMPORARY ROAD CLOSURES

Lismore City Council wishes to advise the following roads will be closed on Sunday, 11 September 2016 between 6am and 12pm for the Darrel Chapman Fun Run:

Molesworth Street (between Woodlark and Orion Streets); Woodlark Street (between Molesworth and Keen Streets); Winterton Parade (between Molesworth Street and Woodlawn Road); Woodlawn Road (between Winterton Street and Numulgi Road); Cusack Road (between Dunoon and Woodlawn Roads); Numulgi Road (between Woodlawn and Lockton Roads).

Keen Street (between Woodlark Street and Browns Creek carpark) will reopen after 10am.

Council would like to thank the community for its patience while this annual charity event takes place.

For information phone Events Officer Leanne Clark on 1300 87 83 87.

YOUR COVER

Keith Graham, a Boatharbour beef cattle farmer, is hosting our final Rural Landholder Initiative field day for 2016. He was one of 20 landholders who became 'champions' for the Rural Landholder Initiative and undertook on-ground works on their rural properties with funding and support from Council. Those properties have been used as demonstration sites for 11 landholder fields days in 2016, which have been attended by more than 350 local farmers and landholders. More details inside.





CONTACT US:
1300 87 83 87

Lismore City Council's Corporate Centre
is located at 43 Oliver Avenue, Goonellabah.

We are open Monday to Friday from 8.30am to 4.30pm.

Our postal address is PO Box 23A, Lismore NSW 2480.

You can email us at council@lismore.nsw.gov.au



Find us on Facebook and
YouTube or follow us on Twitter.



Local Matters is printed fortnightly on
Australian-made, 100% recycled and
carbon-neutral paper.