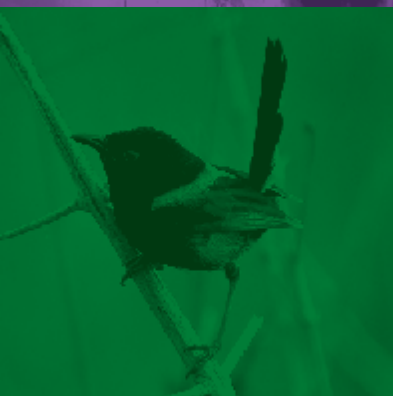


LOCAL MATTERS

LISMORE CITY COUNCIL NEWS
ISSUE 92, 19 JULY 2017



WWW.LISMORE.NSW.GOV.AU



DUCK POND NEEDS YOUR HELP ON NATIONAL TREE DAY

Council is partnering with the South Lismore and Duck Pond Landcare Group to host a National Tree Day event on Sunday, 30 July from 10am.

The Duck Pond in South Lismore is a 27-hectare site with its own one-hectare wetland on Leycester Creek that volunteers have been restoring for around three years.

Weed control, tree planting, an access road and staircase, and the installation of picnic tables has made it a community friendly site popular for picnics, walks and bird watching. Around 50 species of birds have been recorded at the site to date.

Early this year the group was awarded a Fish Habitat Action Grant from the Recreational Fishing Trust to restore a further hectare of the site along Leycester Creek and the northern edge of the wetland with work well underway by professional bush regenerators.

While the opposite riverbank and elsewhere took a battering in the flood, the Duck Pond is a deposition zone so received a thick layer of river sand which buried the exotic vines and destroyed some trees. National Tree Day comes at the perfect time to plant a further 1000 trees to bring back habitat and stabilise the creek bank.

Wilson's River Landcare members are pitching in to help on the day and the Lismore Lions Club will provide refreshments and a sausage sizzle.

Council is contributing \$2000 worth of trees and grasses for the National Tree Day event and people of all ages are invited to come and help plant out the site.

Some tools will be provided, but volunteers are asked to bring a bucket, large watering can or wheelbarrow if they can, as well as gloves, sturdy shoes, drinking water and a hat.

The National Tree Day event will run from 10am to 2pm.

To reach the Duck Pond, you can drive there via Ostrom Street or park on Union Street and enter via the stairs on Frank Street (behind Frank Vanz Tyres).



Botanic Gardens tree planting

The Lismore Rainforest Botanic Gardens are also inviting people to a special National Tree Day planting on Sunday, 30 July.

The event will run from 9.30am to 10.30am followed by a guided walk to point out significant trees of the Botanic Gardens from 10.30am.

Self-guided walks are available all day. Bring your own morning tea and thermos, gloves, hat and covered shoes.

The Lismore Rainforest Botanic Gardens are located next to the Lismore Recycling & Recovery Centre at 313 Wyrallah Road, Lismore.

FLOOD RECOVERY INFORMATION UPDATE

While the flood was now more than three months ago, there is still much to be done to support those slowly getting back on their feet, particularly Lismore businesses. Here is a quick update of our activities and support that is available.

Flood Appeal

Funds from the Lismore Flood Appeal are currently being distributed and all eligible applicants should have funds by the end of this week. The total raised was around \$480,000. This is an amazing effort from local donors and individuals, organisations and businesses right across Australia.

Residential grants

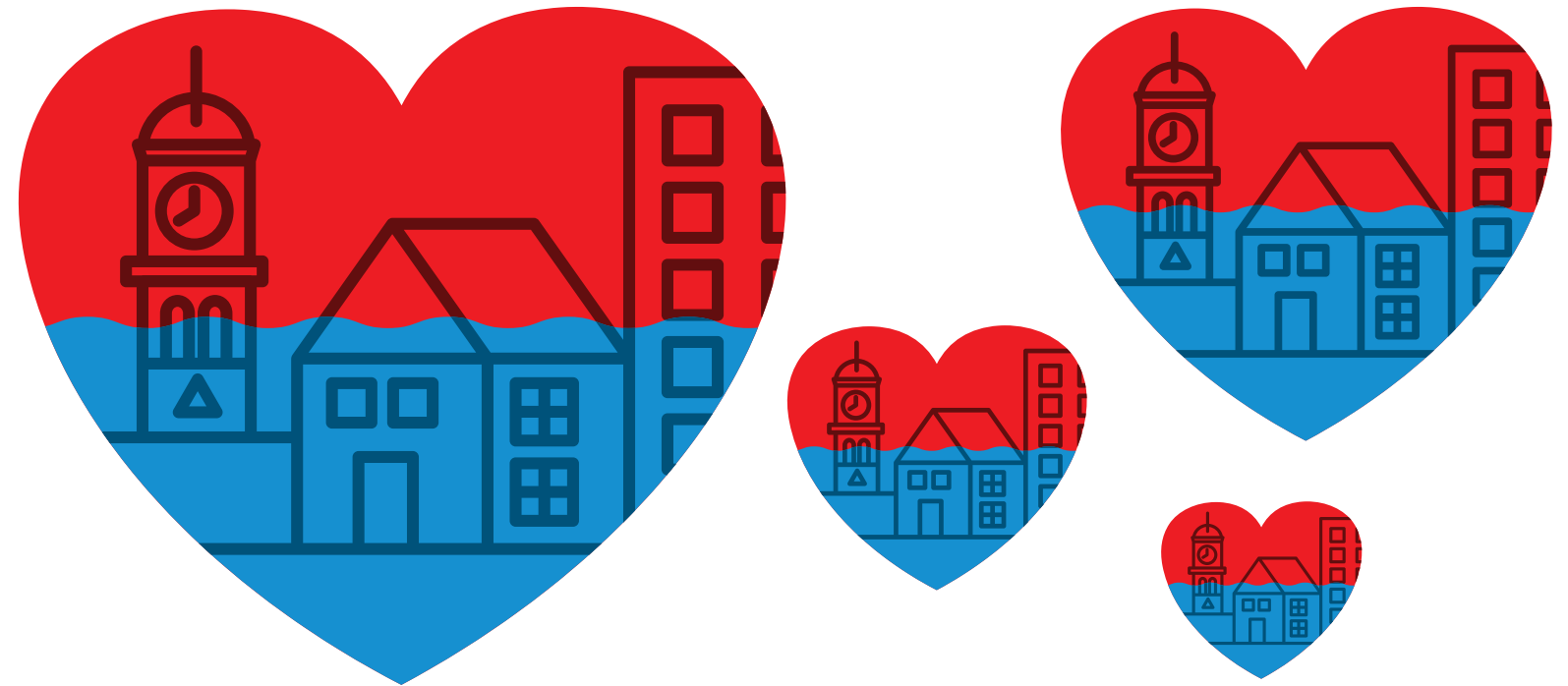
Applications for a variety of grants to support households remain open until 13 October. Please visit www.emergency.nsw.gov.au for information and application forms.

Ongoing business support

Since the flood, Council has been committed to providing ongoing support to our business community.

This support includes the establishment of a Business Flood Recovery Unit, focused on providing practical assistance with grant applications, insurance support and Council matters. With Category C small business grants remaining open until 13 October, Council is keen to ensure businesses do not miss out on the opportunity to apply.

Council has also commissioned a report, *Counting the Cost and Facing the Future*, which paints a true picture around shop vacancies and what Lismore needs to recover and prosper following the flood. It identifies key issues and recommendations that have been presented to the Lismore Business Flood Recovery Taskforce for consideration. Many recommendations are already in train, and others will be implemented in coming months. All are aimed at boosting the Lismore economy, helping small business and revitalising our CBD.



We have also implemented a business chaplaincy support service to ensure business owners are getting the emotional support and care they need. Established in partnership with the Combined Churches of Lismore, the project will see 15 volunteer chaplains regularly visiting local businesses over the next six months.

It is well-documented that people often struggle emotionally three to six months after a major natural disaster and this is when help is needed most. The chaplains will each be allocated a geographical area so they can visit the same businesses each fortnight, build rapport with owners and provide ongoing support.

Last but not least, Council is now embarking on its Lismore Flood Ready Project. This will take a comprehensive look at what happened during the 2017 flood, from waste clean-up and volunteer support provided through the Helping Hands Hub to running a flood appeal. The project will capture important information and Council will develop an action plan for how to best prepare, handle and recover from any future major flood event.

Businesses who need support with insurance claims or grants, emotional support or help of any kind should phone our Manager Economic Development Tina Irish on 0427 003 645.

To read the report and access other recovery information, visit the Flood Recovery Information page at www.lismore.nsw.gov.au.

FREE FIELD DAY FOCUSES ON PROPERTY PLANNING

Our Rural Landholder Initiative continues with another free field day for local landholders coming up at Goolmangar on Thursday, 3 August.

The Practical Property Planning Field Day invites farmers, graziers and rural landholders to a fourth generation grazing property to see property planning in action.

There will be advice and resources available for you to plan your own on-ground actions for ecological restoration on your property.

The day will start with a discussion on why a plan is a valuable property management tool, followed by a property tour looking at practical action plans.

Experts from a range of organisations will be available to provide one-on-one technical and professional assistance to help you get started on your own action planning.

There will be ample time to ask questions and seek advice for your own situation. Topics covered include:



- Weeds and feral animals
- Erosion management and stabilisation
- Grazing management
- Waterways and wetlands management
- Restoration and regeneration options
- Monitoring and documentation
- Costing and resourcing projects
- Accessing funding, benefits and partnerships

These free field days are designed to help local farmers, growers and lifestyle landholders meet others facing similar issues on the land and learn techniques for best-practice methods that aid biodiversity, production and farm health.

The day runs from 9am to 2pm with lunch included.

Numbers are limited so please book early. Phone 1300 87 83 87.

CBD DROPBOX NOW AVAILABLE

We now have a CBD Dropbox available at Lismore Library so people can drop off correspondence or documents for Council without having to hike up to Goonellabah.

The Dropbox will be available in the foyer of Lismore Library and opening hours are as follows:

Monday to Wednesday: 9.30am to 5pm

Thursday: 9.30am to 7pm

Friday: 9.30am to 5pm

Saturday: 9am to 1pm

Sunday: 1pm to 4pm

LOOK OUT FOR THE THIRD EDITION OF YOUR ROADS

Keep an eye out for the third edition of *Your Roads* in your letterbox next week.

This annual publication is designed to help you understand our strategy around fixing roads, where we are at post-flood and some of the challenges we face maintaining a large road network.

Your Roads also includes our full schedule of works for urban and rural sealed roads in 2017/18, so you can see if your road is on the list.

Your Roads is due in your letterbox next Wednesday, 26 July.



LISMORE AVIATION EXPO IS BACK!



Fast Aviation presents the third annual Lismore Aviation Expo on Saturday, 29 July at the Lismore Aviation Centre on Three Chain Road.

The event was cancelled in June due to wet weather but we have rescheduled all the fun and excitement, and encourage locals to come along for a day of adventure and family fun.

Paul Bennet Airshows will perform death-defying aerobatics and there will also be Warbird and helicopter stunts and flyovers.

Rotorwing Helicopter Services, Warbird operators and local hot air balloon companies will be offering joy flights and scenic flights, and Rotorwing will do a five-person skydive from the back of their Bell UH-1 'Huey' helicopter. They are the first company in Australia to achieve approval to have skydiving from a Huey helicopter, so you will be witnessing an Aussie first.

The Expo will also feature magnificent aircraft and helicopter displays from the 1900s to today, plus drones and model aircraft, vintage cars, motorcycles and street machines.

Young people interested in flying can visit training institutes including the Defence Force, emergency services, the Northern Rivers Aero Club and the North Coast Institute of TAFE, which offers a Certificate IV in flight attendant training using a replica plane at its Wollongbar campus. Discuss career pathways and opportunities, and find out about the Aero Club's scholarship for pilot training that is now available.

The Lismore Aviation Expo is a fun day out for all ages and includes children's entertainment, market stalls and yummy food.

"We were devastated to have to postpone in June but we have managed to reschedule most of the original line-up, so we are very grateful," Council's Business Development Coordinator Danielle Hanigan said.

"This is a fantastic event for Lismore and is growing each year thanks to the enthusiastic support of our Northern Rivers aviators and our local community.

"Our only issue is parking and we encourage visitors to please use the free shuttle buses provided, as parking on site is strictly limited and the ground is still incredibly wet."

Council will be operating a free shuttle bus service throughout the Expo. Buses will run on a continuous loop from 9am from the Lismore Transit Centre in the CBD and the Lismore Airport Passenger Terminal. All sites will have a clearly signposted 'Bus Stop'. Disabled parking will be available on-site at the Expo.

The Lismore Aviation Expo runs from 9am to 4pm at the Lismore Aviation Centre, Three Chain Road, South Lismore. Entry is \$5 with children under 16 free.

Proceeds from the Lismore Aviation Expo will go to the Westpac Life Saver Rescue Helicopter.

 presents...



LISMORE AVIATION EXPO

For more information, go to www.visitlismore.com.au





DEVELOPMENT CONSENTS ISSUED

ENVIRONMENTAL PLANNING AND ASSESSMENT ACT

In accordance with the provisions of Section 101 of the Act and Clause 124 of the EP&A Regulation, notification is given that the undermentioned developments have recently been granted consent.

DA No.

14/054-2 30/78 Cecil Street, Nimbin: Section 96(1A) modification alterations to add a verandah and new toilet and laundry building.

16/363-2 7 Sibley Street, Nimbin: Section 96(1A) modification to delete the approved awning and set the house back 1m from the western boundary increasing the depth of the front verandah and still adjoining the footpath as approved.

17/24 18 Greenhills Drive, Goonellabah: Insulated patio roof.

17/58 78 Cameron Road, Boat Harbour: Section 96(1A) modification to increase the front setback from 16.560m to 21.058m, minor changes to side and rear setbacks, and reduce building pad level from 63.250m to 62.760m AHD.

17/62 134 High Street, Lismore Heights: Closure of an unused area of road to create a residential lot.

17/75 126 Quilty Road, Rock Valley: Dwelling.

17/78 2 Tareeda Way, Nimbin: Dwelling house and alteration to existing shed.

17/94 20 John O'Neill Circuit, Goonellabah: Inground swimming pool, shed, retaining wall and site benching.

17/103 195, 195A and 237 Rosebank Road, Rosebank: To undertake a consolidation of Lot 1 DP1197615 and Lot 34 DP807049 (consolidated lot); and boundary adjustment subdivision between the consolidated lot (created by the above dot point) and Lot 3 DP790581.

17/104 26 Ashgrove Drive, Goonellabah: To undertake the subdivision of one lot to create five residential allotments and associated works.

17/129 1166 Dunoon Road, Modanville: Carport to existing dwelling and extension to existing shed.

17/135 6 Music Street, East Lismore: Covered verandah and carport with a building line variation to 0.2m to Music Street.

17/160 30 Avondale Avenue, East Lismore: Demolish existing garage and construct a two-storey garage, store rooms and office.

17/161 17 Fig Tree Drive, Goonellabah: Carport with building line variation to 1m to Fig Tree Drive.

17/162 61 Cathcart Street, Girards Hill: Dwelling additions and alterations including rear verandah, renovated bathroom and new front fence in a heritage conservation area.

17/165 22 Karissa Drive, Goonellabah: Dwelling.

17/166 7 Acacia Avenue, Goonellabah: 1.2m high retaining wall.

17/169 21 Paunelle Avenue, East Lismore: Alterations to existing dwelling converting garage to living area and replacement windows to bedrooms.

17/171 5 Elthan Place, Goonellabah: Shed.

17/173 161 Keen Street, Lismore: To change the use of part of the existing building, being the northern most shop fronting Keen Street (approx. 71m²), to a business premises (hairdresser).

Details of applications and consents, together with conditions attached, may be inspected at Council's Corporate Centre during business hours or via DA Tracking at www.lismore.nsw.gov.au.

Please trim your footpath trees

We have had a request from a local resident to ask people to remember to trim bushes and trees that hang over their property onto the footpath.

Many people love to take walks in the morning or to the local shops, and all footpaths and grassy verges outside homes should allow enough room for people to easily walk by.

If you have trees or bushes that overhang a footpath, this is a gentle reminder to please think of pedestrians and please keep them trimmed so the path is clear.

Thank you!



NEW MEMBER WANTED FOR LISMORE BUSINESS PANEL

Lismore City Council is seeking nominations for a single position on the Lismore Business Panel (LBP).

The LBP oversees and advises on the activities of the Special Business Rate Variation Levy (SBRVL) Lismore Promotion Program, including the City Centre Management Program.

The special business rate for the Lismore Promotion Program is levied annually on all business properties (i.e. retail, professional services, commercial or industrial) in the Lismore Urban Area.

To be eligible, a nominee must be a property owner and/or the owner or manager of a registered business, directly or indirectly contributing to the special business rate for the Lismore Promotion Program within the defined City Centre Zone (see map on Council's website at www.lismore.nsw.gov.au). Nominations will be reported to a future Council meeting for determination.

Nomination forms are available at www.lismore.nsw.gov.au in the blue Business & Industry tab (click on Lismore Business Panel). Please also take the time to read the current Lismore Business Plan.

Nominations must be received by close of business on Friday, 4 August 2017. Nominations can be posted to PO Box 23A, Lismore, NSW 2480 or emailed to council@lismore.nsw.gov.au.

Should you require clarification or further information, please contact City Centre Manager **Jason Mumford** on **1300 87 83 87**.



UPCOMING MEETINGS AND BRIEFINGS

COUNCILLOR BRIEFINGS

Councillor briefings are held most Tuesday evenings so staff can provide background on issues or projects and Councillors have a chance to brainstorm and discuss. These sessions are open to the public.

On Tuesday, 1 August the agenda includes: Commercial Services update, roads capital works update, Larkin Lane wastewater renewal project and planning proposal to rezone land at Caniaba. Held in the Council Chambers from 6pm.

On Tuesday, 15 August the agenda includes: Long Term Financial Plan 2017-2027, tree workshop and edible streetscapes policy. Held in the Council Chambers from 6.30pm.

On Tuesday, 22 August the agenda includes: Water and wastewater performance and outstanding rates and charges. Held in the Council Chambers from 6pm.

On Tuesday, 29 August the agenda includes: Rural Landholder Initiative, Investment Policy review and Richmond Tweed Regional Library Deed of Agreement. Held in the Council Chambers from 6pm.

Anyone is welcome to attend the above briefings and view presentations from the public gallery.

COUNCIL MEETINGS

The next ordinary meeting of Lismore City Council is coming up on Tuesday, 8 August at 6pm in the Council Chambers.

Items on the agenda include: proposed expansion of Lismore Square, General Aviation subdivision and Loans to the Community Policy.

Remember you can now watch Council meetings live via our webcast at www.lismore.nsw.gov.au. For information or to book in for public access, phone Jane Torr on **1300 87 83 87**.

PROPOSED PERMANENT BUSINESS SPECIAL RATE VARIATION

Council has accepted the Lismore Business Panel's recommendation that it consider applying for a permanent business Special Rate Variation (SRV).

The proposed SRV would be a rate-pegged amount of \$120,000 per annum and would commence on 1 July 2018.

This permanent business SRV would replace the current five-year Special Business Rate Variation Levy (SBRVL), which expires automatically on 30 June 2018.

When this expires, funding to promote business in Lismore will revert to pre-2010 levels. Making the new SRV permanent would secure the future of business promotion in Lismore as the city's economy faces the challenge of recovering from the March flood event.

Council will consult widely with Lismore business ratepayers and the wider business community starting next month.

The NSW Independent Pricing & Regulatory Tribunal (IPART) requires Council to consult with the Lismore business community and obtain a clear indication of support (or otherwise) for the proposed business SRV. The consultation process will include distribution of a six-page Business Bulletin, an online survey, a briefing for the Lismore Chamber of Commerce & Industry, and a workshop attended by randomly-selected members of the business community in early August.

Based on the outcomes of the consultation process, a recommendation to proceed (or otherwise) with an application to IPART will be discussed at Council's December meeting. If approved, the application to IPART would be lodged in February 2018.

If you are a business ratepayer or business owner/manager and want to participate in the online survey please visit www.lismore.nsw.gov.au (Business & Industry tab/Lismore Business Panel).

Submissions relating to the proposed business SRV outlining grounds of objection or support should be in writing and addressed to the General Manager, Lismore City Council, PO Box 23A, Lismore, NSW 2480, or emailed to council@lismore.nsw.gov.au.

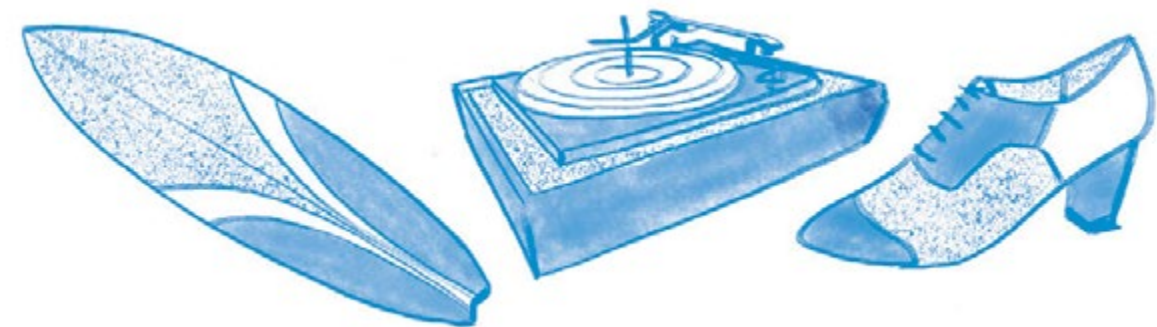
SAVE THE DATE: SECOND HAND SATURDAY

Save the date for Second Hand Saturday – the biggest garage sale on the North Coast.

There will be hundreds of garage sales across the region and people can choose to participate and hold a garage sale on the day, or simply block out your diary for a big day of bargain hunting.

Second Hand Saturday will be held on Saturday, 23 September with all householders who wish to hold a garage sale receiving a free listing online and in their local newspaper.

Registrations open on 24 July. Visit www.secondhandsaturday.com.au.



YOUR COVER

Rotorwing Helicopter Services is the first company in Australia to undertake adventure flights in a Bell UH-1 'Huey' helicopter and also recently became the first to gain approval for Huey skydiving operations.

Come and see Rotorwing's first synchronised five-person skydive in action at the Lismore Aviation Expo on Saturday, 29 July. Rotorwing chief pilot and owner Michael Barnes is very keen to show off his helicopters to the public and will also be doing flying demonstrations as well as joy flights from just \$50.

The Lismore Aviation Expo is a huge day of family fun with aerobatics displays, demonstrations, static displays, trade stalls, food, children's entertainment and more. Full details inside.





CONTACT US:
1300 87 83 87

Lismore City Council's Corporate Centre is located at 43 Oliver Avenue, Goonellabah.

We are open Monday to Friday from 8.30am to 4.30pm.

Our postal address is PO Box 23A, Lismore NSW 2480.

You can email us at council@lismore.nsw.gov.au



Find us on Facebook and YouTube or follow us on Twitter!



Local Matters is printed fortnightly on ENVI Australian-made, 100% carbon-neutral paper.