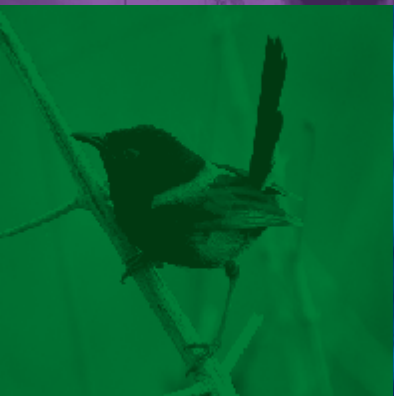


LOCAL MATTERS

LISMORE CITY COUNCIL NEWS
ISSUE 113, 9 MAY 2018



WWW.LISMORE.NSW.GOV.AU



DOB IN A DUMPER AND HELP YOUR COMMUNITY

Lismore City Council is asking for help to stop illegal dumping in our community and is offering rewards to residents who witness and report someone dumping waste that leads to a prosecution.

Illegal dumping is the disposal of waste on public or private land or into water without a licence, permit or approval from a relevant authority such as Council or the EPA. Household rubbish and household items such as furniture, whitegoods and mattresses are the most commonly dumped items in our region, however asbestos, building waste, machinery and green waste are also significant.

Dumped waste is one of the most visible signs of pollution in our community and can cause significant damage to the environment by threatening wildlife and ecosystems through the spread of weeds, as well as encouraging vermin such as rats and snakes. It can also place public health at risk, particularly in relation to hazardous waste such as asbestos. Illegal dumping can also lower property values and looks unclean and ugly.

“Illegal dumping costs our community thousands of dollars every year, with ratepayers’ money used to clean up dumped waste that could be better spent on positive community initiatives,” Council’s Illegal Dumping Project Officer Samala Heart said.

“The NSW EPA takes the dumping of waste very seriously. Those found guilty now face fines from a minimum of \$4000 up to \$1 million.”



The Dob in a Dumper program encourages members of the public who witness illegal dumping to report it to Council immediately. If the information provided results in a successful prosecution, reporters are eligible for a reward of up to \$250.

If possible, information to report includes:

- Location, date and time waste was dumped.
- What types of materials were dumped, how much and whether you believe it may be hazardous.
- Name and address or vehicle/vehicle registration details.
- Photographs of the incident.

As much information as you can provide will support Council to investigate the matter further.

To report illegal dumping, phone us today on 1300 87 83 87.

R
I
D **REPORT
ILLEGAL
DUMPING**

1 300 87 83 87

GET TOGETHER FOSTERS COMMUNITY CONNECTION

Our West Community Panel is holding a community get together on Saturday, 26 May at Goolmangar Hall to foster connection between local people and launch a new resource to spread the word about local events and activities.

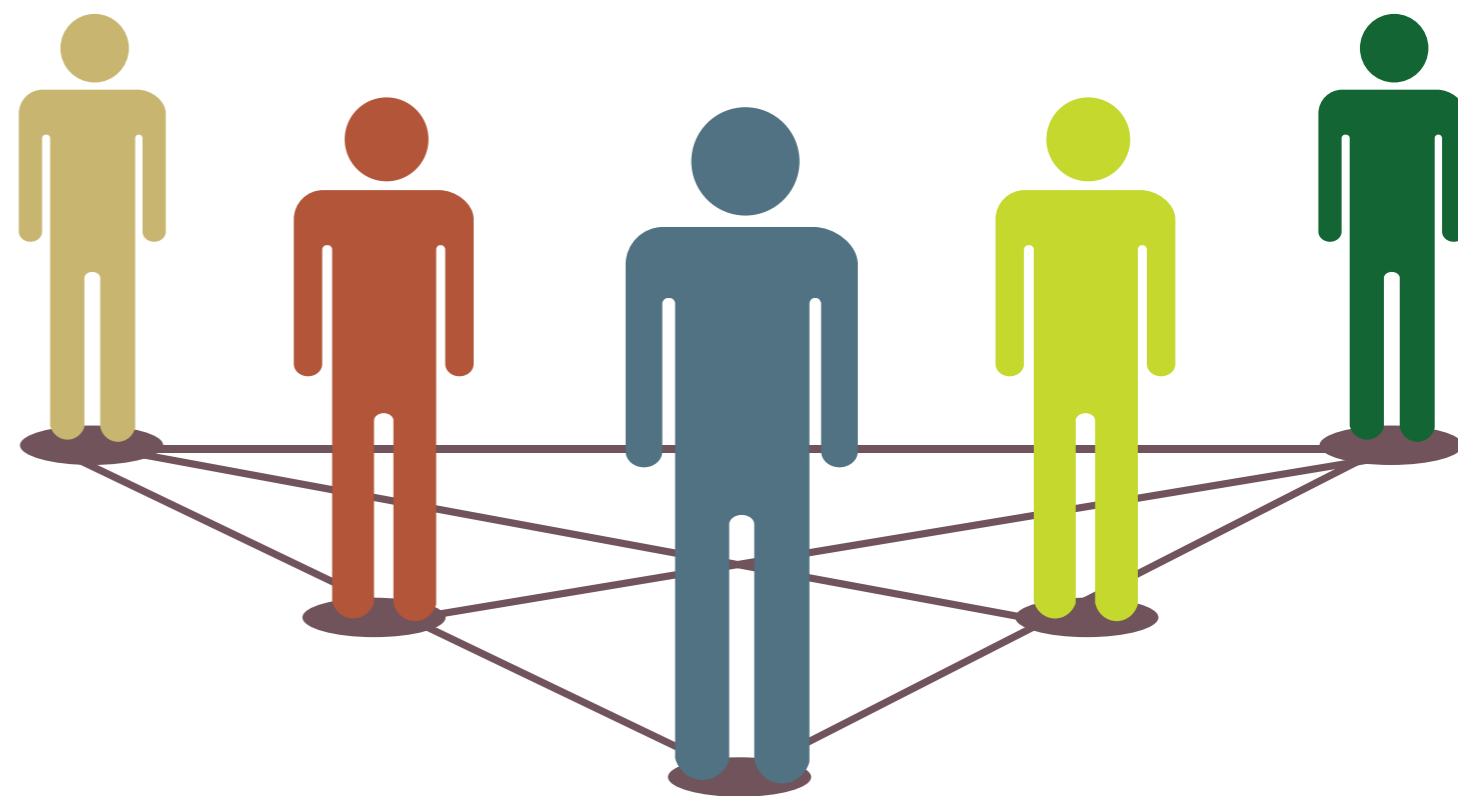
The West Community Panel encompasses the localities of Booerie Creek, Blakebrook, Goolmangar, Coffee Camp, Jiggi, Georgica, Rock Valley, Larnook and Tuncester/Leycester.

The panel recently discussed how to foster communication across the region and some of the issues/questions that came up included:

- Are you new to the area (or an 'old timer') and unsure how to connect with local services?
- Are you always missing out on fabulous events in the hall the next valley over?
- Do you want to advertise your class/social group?
- How do I get in touch with a local tradie?
- How can we publish a magazine/newsletter celebrating and publicising our cherished localities?

The outcome of these discussions is **livingoutoftown.org** – a new website that includes a monthly e-newsletter and, in the future, a printed version to connect with residents who do not use the internet.

The website continues to evolve as more of the local community engages with and utilises the site. The website is a forum for articles across a wide range of subjects as well as free promotion of local events, classes and service providers.



The community get together on 26 May is a chance to celebrate and officially launch the West Community Panel website.

The get together aims to foster connection between local residents and there is space for stalls promoting local groups, businesses, growers, activities and classes (please book). There will be a free sausage sizzle, jumping castle, face painting, activities, games for the kids and other performances that showcase the local community. The day will run from 11.30am to 4pm at Goolmangar Hall.

For more information or bookings phone Desley on 0400 148 336 or email livingoutoftown@gmail.com.

BOTANIC GARDENS OPEN DAY AND BIRTHDAY CELEBRATION

The Lismore Rainforest Botanic Gardens is holding a special open day on Sunday, 27 May from 9.30am to 12pm.

The day is chance for kids and adults to take part in fun activities and celebrate five years since the Lismore Rainforest Botanic Gardens officially opened to the public.

The Lismore Rainforest Botanic Gardens are located on land next to the Lismore Recycling & Recovery Centre and were opened in 2013. However, the idea for a botanic garden started long before that and the gardens have been lovingly nurtured by a hard-working group of volunteers for almost two decades.

The gardens showcase native plants which are indigenous to an area within 200km of Lismore and boast abundant wildlife including many koalas, wallabies and over 100 species of birds at last count. There are also seating areas to relax or picnic, shady walking tracks and colourful signage.



The theme for the Botanic Gardens Open Day is 'Conserving Plants – Our Lives Depend On It' and there will be interesting activities and fun for all ages throughout the leafy gardens or inside the Lismore Environment Education Centre.

There will be a plant stall, card and book sales, a morning tea stall and great gardening advice.

Open Day Program

9.30am onwards

- Digital microscope and other activities for the kids (Education Centre)
- Botanical art for kids and their adults with Tim Roberts (Education Centre)
- Pot a plant to take home (eucalypt forest near plant stall)
- Self-guided walks all day (brochures in info boxes at Education Centre)



9.45am

- Official opening of solar clock with demo of design (Sensory Garden)

10.15am

- Cutting of the fifth birthday cake (Education Centre)

10.30am to 11am

- Free guided walk (meet your guide at the Education Centre at 9.45am)

The Lismore Rainforest Botanic Gardens are located within the Lismore Recycling & Recovery Centre at 313 Wyrallah Road, East Lismore. The day is free and open to all ages.



FIRE FOR HEALTHY HABITATS: FREE WORKSHOP IN NIMBIN

Thinking about burning-off on your property this winter? You might like to consider more than just asset protection.

A workshop to be held at Nimbin Town Hall on Friday, 1 June will introduce landholders to the idea of fire for biodiversity and how to integrate the needs of native plants and animals with future plans for fire.

Hosted by the Northern Rivers Fire and Biodiversity Consortium in partnership with Lismore City Council, the workshop is free to any landholders within the Nimbin area with an interest in using fire as a land management tool.

Council's Environmental Strategies Officer Wendy Neilan explained that the workshop is designed to bring information to the community and improve understanding of fire management so that people can make informed choices about how they apply fire to their property.

"It's about empowering people with knowledge to make safe, ecologically appropriate and sustainable decisions," Wendy said.

The workshop features presentations from local experts including rainforest botanist Rob Kooyman, fire ecologist Andy Baker and fauna expert Dave Milledge.

Topics include forest types, appropriate fire regimes, plant and animal responses to fire and decisions around where fire is excluded.

Representatives from the NSW Rural Fire Service will be attending to speak on bushfire risk, community protection and property fire planning as well as approvals, permits and Rural Fire Service support.

"While the workshop's focus is on fire and habitat, protection of life, property and community safety are an important part of the equation," Wendy said.

"Protecting the environment and your home, lifestyle and agricultural productivity are not mutually exclusive decisions. There will be something of benefit for all landholders attending this workshop regardless of whether or not they intend to burn."

The program will also cover cultural burning methods, how that approach can be applied to help recover habitat and threatened species, and the importance of cultural burning as a way for Aboriginal people to strengthen connections with country and regain knowledge.

The workshop concludes with a short question and answer session following a small group discussion time after lunch.

"This means that workshop participants will have a chance to ask all those final burning questions by the time we finish at 2.30pm," Wendy said.

Fire for Healthy Habitats and Safe Communities is on at Nimbin Town Hall on 1 June from 10am to 2.30pm. Entry is free and a light lunch is provided. Registrations are essential.

**To book phone
1300 87 83 87.**



Five
for Healthy Habitats
and safe communities

FREE WORKSHOP FOR LOCAL LANDHOLDERS

Want to know more about ?

- **The role of fire in managing bushland**
- **Cultural burning practices**
- **Fire management for protection of life and property**

Presentations from local ecologists and Rural Fire Service

Friday June 1st, 10 am – 2.30 pm
Nimbin Town Hall, Nimbin

Bookings essential RSVP 1300 878 387

Brought to you by Lismore City Council in partnership with NRFABCON





DEVELOPMENT CONSENTS ISSUED

ENVIRONMENTAL PLANNING AND ASSESSMENT ACT

In accordance with the provisions of Section 101 of the Act and Clause 124 of the EP&A Regulation, notification is given that the undermentioned developments have recently been granted consent.

DA No.

09/328-4 171 Wilson Street, South Lismore: Section 96(1A) modification to original consent pertaining to roads and drainage works, in particular condition 22.

10/512-2 32 Fernside Road, Fernside: Section 96(1A) modification of consent to not raise the heritage item building and to construct a concrete path around the building to remediate the issue of soil contamination, modifying the relevant conditions.

13/76 89 Cullen Road, Nimbin: Studio.

16/335-2 1 Lincoln Avenue, McLeans Ridges: Dwelling, inground swimming pool and detached garage.

17/097-2 766 and 766A Ballina Road, Goonellabah: Section 96(1A) modification to approved subdivision to reduce the number of approved lots from eight to seven and to stage the development.

17/286-2 9 Newhaven Drive, Goonellabah: Section 96(1A) modification to increase the height of the retaining walls.

17/334-2 799 Ballina Road, Goonellabah: Section 96(2) modification to reduce the number of consulting rooms from 4 to 3 and amended associated conditions (dental clinic).

17/364 619 and 627 Skyline Road, Goonellabah: To undertake the subdivision of two lots to create four lots. In particular proposed lot 2 is zoned SP2 Infrastructure and is approved to be used as part of the Lismore Memorial Cemetery; proposed lot 4 is approved as a primary production lot under the RU1 Primary Production Zone; and proposed lots 1 and 3 will each retain an existing dwelling house.

17/401 48 Kirkland Road, Nimbin: Change of use of an existing shed to a dwelling to create a detached dual occupancy.

18/015 61 Rifle Range Road, East Lismore: Internal alterations to improve reception area and create larger office space.

18/17 43 Duncan Road, Numulgi: Shed.

18/18 251 Tatham Road, South Gundurimba: Relocatable dwelling.

18/48 9 Earls Court, Goonellabah: Two-storey dwelling with retaining walls.

18/59 26 McMahon Road, South Gundurimba: Dwelling.

18/72 121 James Street, Dunoon: Dwelling addition (covered deck).

18/74 95 Brunswick Street, Lismore: Carport.

18/77 472 Dunoon Road, Tullera: Shed.

18/81 84 Avondale Avenue, East Lismore: Dwelling alterations and additions (demolition of existing deck and construction of new deck with storage under).

18/87 21 John O'Neill Circuit, Goonellabah: Dwelling and retaining wall with variation to DCP for cut and fill, height and location of retaining walls.

18/93 1 Kurrajong Place, Caniaba: Shed with a five-metre building line to Caniaba Road.

18/96 340 Keerrong Road, Keerrong: Dwelling additions and alterations including three bedrooms, bathroom, ensuite and patio with a building line variation to 10 metres to Keerrong Road.

18/98 166 Molesworth Street, Lismore: Change of use from retail chocolate shop to a hairdressing salon.

18/99 1575 Dunoon Road, Dunoon: Inground swimming pool.

18/102 1 Livotto Drive, Richmond Hill: Dwelling addition and inground swimming pool.

18/105 696 Tregeagle Road, Tregeagle: Farm shed.

Details of applications and consents, together with conditions attached, may be inspected at Council's Corporate Centre during business hours or via DA Tracking at www.lismore.nsw.gov.au.



RIVERBANK OPEN DAY AT ELTHAM VALLEY PANTRY

Boatharbour Landcare in partnership with Richmond Landcare Inc. will host a Riverbank Restoration Open Day on Saturday, 19 May at the Eltham Valley Pantry.

The day will highlight work being undertaken in partnership with Lismore City Council through the Biodiversity Management Strategy. The project builds on previous work by Boatharbour Landcare on the Wilsons River and includes restoration and planting of native trees along tributaries in Boatharbour and Eltham, supporting five landholders to restore approximately 1km of riverbank.

Site Action Plans have been developed for each property by Big Scrub Regen, the professional bush regeneration company contracted for this project, supporting landholders to protect the critical remaining pockets of high conservation value vegetation into the future.

One of the beneficiaries of the grant is the Eltham Valley Pantry, which has 420 metres of riparian frontage on the Wilsons River. Guests can view the work site which has been boosted by in-fill planting of 250 trees and bush regeneration.

Take a wander through a productive pecan plantation and hear the story of how the property owners are learning what they can do to improve river health. Local experts will also be on hand to discuss Landcare plans and opportunities.

The day runs from 9am to 12pm at the Eltham Valley Pantry at 712 Eltham Road, Eltham.

To register contact Richmond Landcare Coordinator Hannah Rice-Hayes on 6619 0115 or email landcare.support@richmondlandcare.org.



ON PUBLIC EXHIBITION

Planning Proposal to amend the Lismore Local Environmental Plan at 55 Palmers Road, McLeans Ridges

At its ordinary meeting of 11 April 2017, Lismore City Council resolved to support a planning proposal to amend the Lismore Local Environmental Plan (LEP) 2012 to rezone part of 55 Palmers Road, McLeans Ridges, from Zone RU1 Primary Production to R5 Large Lot Residential in accordance with the *Environmental Planning and Assessment Act 1979*.

The planning proposal seeks to amend the minimum lot size for land proposed to be rezoned to Zone R5 Large Lot Residential from 40ha to 1ha and apply a maximum building height of 8.5m. It is also proposed to correct a zoning anomaly by rezoning a small strip of land on the southern boundary of the site from R5 Large Lot Residential to RU1 Primary Production with commensurate changes to the minimum lot size and height of building LEP maps.

On 17 June 2017 the Department of Planning and Environment issued a Gateway Determination with conditions including requirements for further site investigations to be undertaken relating to potential land contamination and Aboriginal cultural heritage. The finalisation of the LEP has been delegated to Council.

The planning proposal is on exhibition for public comment from 10 May to 8 June 2018. Copies of the planning proposal, Gateway Determination and technical studies are available at the front counter of Council's Corporate Centre, 43 Oliver Avenue, Goonellabah, and on Council's website www.lismore.nsw.gov.au.

Submissions outlining grounds of objection or support can be made online, emailed to council@lismore.nsw.gov.au or sent to the General Manager, Lismore City Council, PO Box 23A, Lismore, NSW 2480.

For enquiries, please contact Strategic Planner Sally Slater on 1300 87 83 87.

Submissions must be received by close of business on Friday, 8 June 2018.

TRAFFIC ALERT: ROADWORKS

Please be aware of our roadworks underway in your travels around town.

Molesworth Street near the Transit Centre, CBD (fixing the road)

Molesworth Street between Conway and Magellan Streets remains open for southbound vehicles only. Travel into the CBD from Ballina Road will remain under detour via Conway or Keen Streets.

Carrington Street south of Magellan Street, CBD (fixing a water main)

Carrington Street will have temporary closures to parking and travel lanes as we complete water main replacement here. This work is in preparation for fixing the road next financial year.

Little Keen Street, CBD (fixing the wastewater)

Little Keen Street will be under traffic control in places as we progressively fix the wastewater main over the coming months along this street and linking to Keen Street.

Bruxner Highway 3km south of Lismore Airport, South Gundurimba (fixing the road)

Bruxner Highway roadworks continue from Loftville Bridge to Tunstall Street on the behalf of NSW Roads and Maritime Services. Expect significant delays during work hours, Monday to Saturday.

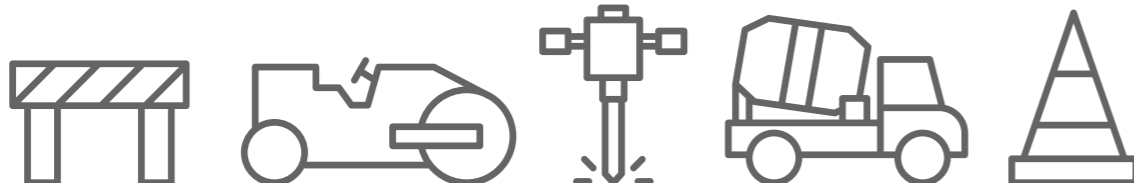
Kyogle Road at Rosehill Road, Tuncester (fixing the road)

Kyogle Road near its Rosehill Road intersection remains under traffic control.

Broadwater Road west of Broadwater Bridge, Broadwater (fixing the road)

Broadwater Road west of the Broadwater Bridge remains under traffic control.

Please allow for additional travel time at these roadworks during work hours. We will update our electronic message trailers as traffic controls change.



WINTER WAKE UP SPECIAL: SIGN UP BEFORE 31 MAY AND SAVE

SWITCH 24-hour gym's Winter Wake Up special will have you fit, healthy and ready for anything this winter.

SWITCH 24-hour gym at the Goonellabah Sports & Aquatic Centre offers a warm and friendly environment, and the Winter Wake Up special will save you \$50 off a three-month premium membership.

This means no long-term commitment but a great rate for unlimited access to the gym, pool and more than 40 Group Fitness classes.

Maintaining a steady exercise regime throughout the year is much better for long-term health than letting your fitness go in winter and working out hard for spring.

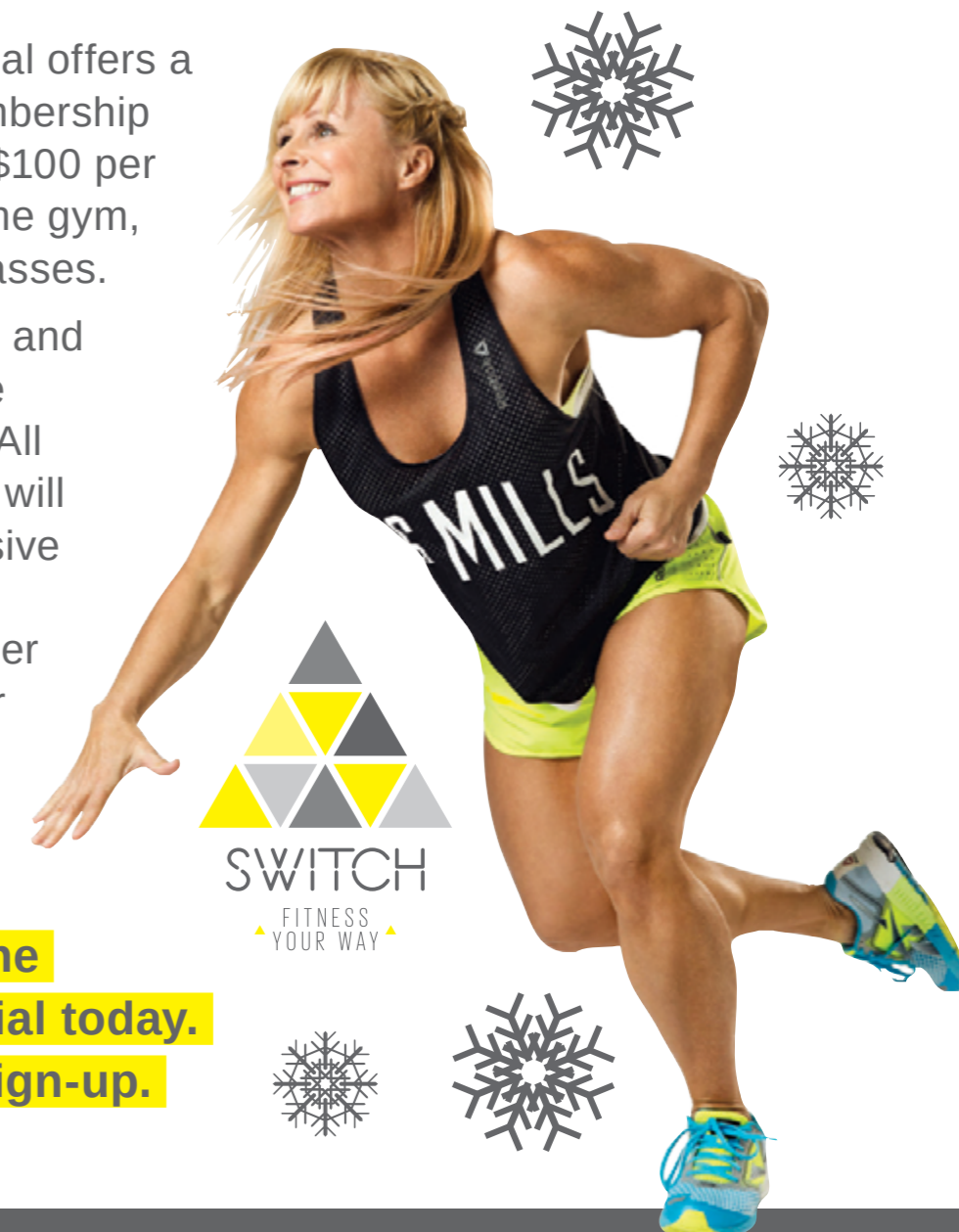
The Winter Wake Up special offers a three-month premium membership for just \$300 – that's only \$100 per month with full access to the gym, pool and Group Fitness classes.

Join before the end of May and receive one free 30-minute personal training session. All Winter Wake Up members will also receive a comprehensive gym program from an experienced SWITCH trainer to keep you motivated over the cooler months.

Don't freeze your fitness this winter

– take advantage of the Winter Wake Up special today.

Phone 6625 5370 to sign-up.





CONTACT US:
1300 87 83 87

Lismore City Council's Corporate Centre
is located at 43 Oliver Avenue, Goonellabah.

We are open Monday to Friday from 8.30am to 4.30pm.

Our postal address is PO Box 23A, Lismore NSW 2480.

You can email us at council@lismore.nsw.gov.au



Find us on Facebook and
YouTube or follow us on Twitter!



Local Matters is printed fortnightly on
ENVI Australian-made, 100% carbon-
neutral paper.