

LOCAL MATTERS

LISMORE CITY COUNCIL NEWS
ISSUE 152, 6 NOVEMBER 2019



WWW.LISMORE.NSW.GOV.AU





NOMINATIONS OPEN FOR AUSTRALIA DAY AWARDS



Australia Day 2018 winners.

We are calling for nominations for Lismore Council's 2020 Australia Day Awards.

Lismore Mayor Isaac Smith said the awards acknowledge the dedication of our volunteers who have contributed to our community and people who have excelled in their field of endeavour.

"Australia Day Awards give us a chance to acknowledge and thank people in our community who make a difference to the lives of others or who are achieving exceptional things in their field," Councillor Smith said.

"If you know someone who is passionate, talented or works tirelessly for our community, I encourage you to nominate them.

"It only takes 5-10 minutes to complete an online nomination, and it brings great joy to watch hard-working people receive a little of the recognition they deserve."

Categories in 2020 are: Citizen of the Year, Young Citizen of the Year, Aboriginal Citizen of the Year, Services in Community (Individual), Services in Community (Group), Sportsperson (Senior), Sportsperson (Junior), Sports (Team/Group/Organisation), Sustainable Environment and Art/Cultural.

Nominations close on Friday, 29 November 2019. Council now only accepts online nominations. Visit our Australia Day Awards page on our website www.lismore.nsw.gov.au to apply.

NEW REVOLVE SHOP VOLUNTEERS HELP US REDUCE WASTE

The Lismore Revolve Shop has three new volunteers joining its ranks.

The Revolve Shop volunteers repair items, help with organising displays and sort the many items that are dropped off so they can be sold and given a new life rather than ending up in landfill.

New volunteer Richard Swinton loves the idea of doing something practical to reduce waste and build a culture of re-using and recycling.

“I was really keen to make a contribution to recycling and help reduce the massive amount of waste we use,” he said.

“I felt this was something I could do to help the community – if we don’t start reducing our waste, we’ll end up living under a pile of it.”

Fellow volunteer Gunter Cross couldn’t agree more.

“If we don’t do something, our children will end up drowning in garbage,” he said.

“Everything is disposable these days – it all needs to go up quickly, cost nothing and be easy to throw out. We need to change that attitude and recycle and re-use much more.”

Volunteers expressed their surprise at the items that come through the Revolve Shop.

“People don’t realise the quality of items that come through here,” one volunteer said.

“There is expensive gear, items that have nothing wrong with them, and stuff that is rare and collectible. Lots of things just need a clean or a very minor fix and they are working perfectly.”



Image: Revolve Shop operator Met Uriter (front) with (l-r) existing volunteers John Hildebrand, Sally Boyle and Phil Ives plus our three new volunteers David Walmsley, Richard Swinton and Gunter Cross.

Located at the Lismore Recycling & Recovery Centre, the Revolve Shop sells household furniture and crockery, lamps, nick knacks, you name it. There are children’s toys, quality tools, clocks, speakers and even skiing gear. Out the back in the Revolve yard it’s just as diverse, with lots of building and renovating materials right through to machinery such as whipper snippers and mowers, chairs and tables, bikes for the kids, and lots more.

It’s all there (including the kitchen sink!) for a fraction of what you’d pay somewhere else. Come for a visit and help us re-use, recycle and reduce waste.

The Lismore Revolve Shop is open Tuesday from 9am to 2pm and Thursday, Friday and Saturday from 9am to 1pm. The shop is closed on Sunday, Monday and Wednesday.

BIG SCRUB PUBLISHES 3RD EDITION OF RAINFOREST RESTORATION MANUAL

Big Scrub Landcare has published a third edition of its highly regarded *Subtropical Rainforest Restoration – A practical manual and data source for Landcare groups, land managers and rainforest regenerators.*

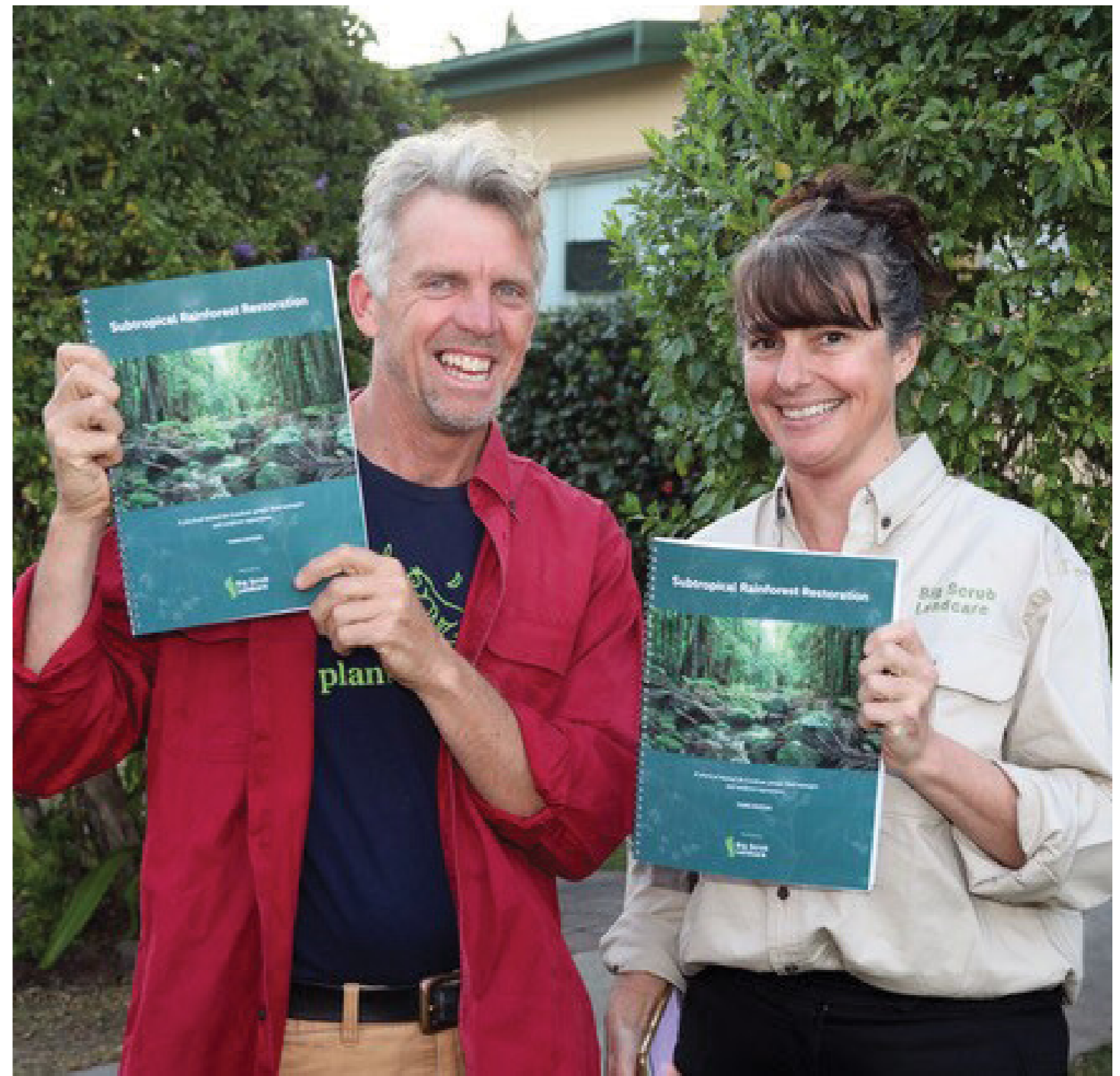
Written for land managers, Landcare groups, rainforest regenerators and restoration consultants, Big Scrub Landcare's rainforest restoration manual is a comprehensive guide to rainforest and subtropical rainforest restoration practices.

Dr Tony Parkes, President Big Scrub Landcare said: "The manual provides information on how to rehabilitate and care for existing subtropical rainforest remnants and re-establish subtropical rainforest on land from which it has been cleared."

"The third edition identifies and incorporates the latest science all the current best practice techniques for rainforest restoration, remnant rehabilitation, rainforest regeneration planning, rainforest restoration planting, rainforest weed control and important data relevant to planting for 289 trees and shrubs that occur in lowland subtropical rainforest."

First published in 1998, with a second edition in 2005, the manual has sold over 4000 copies to date.

The third edition has been produced by Big Scrub Landcare with the assistance of Envite Environment and Firewheel Rainforest Nursery. It has received support from the Patagonia Environment Grants Fund of Tides Foundation. It has been sponsored by Lismore City Council, Rous County Council, Rainforest Rescue, Ballina Shire Council, Brookfarm; Stone and Wood, Richmond Landcare Inc, Brunswick Valley Landcare,



East Coast Bush Regeneration, Darren Bailey, Building Forest Designs, Brush Turkey Enterprises, Big Scrub Regen Pty Ltd, Landmark Ecological Services and Forest Heart Econursery.

The manual is \$25 and available for purchase from the following places Big Scrub Landcare (orders@bigscrubrainforest.org), Envite Environment, Firewheel Rainforest Nursery – Corndale, Lismore Environment Centre and various local Landcare groups.

For wholesale enquiries email info@bigscrubrainforest.org

LISMORE LIBRARY GETS A MAKEOVER

Lismore Library is having a much needed refurbishment!

This will mean that the library will be closed from Monday, 18 November to Friday, 29 November 2019. During this time the library will be fitted out with new shelving, furnishings and carpet.

If you attend any of the library's programs do not despair! During the closure all the regular activities such as Book Clubs, Young Writers Group, Storytime, Baby Bounce & Toddler Time will be running at the normal times in the ground floor meeting room. Our much anticipated author event with Annie Seaton will definitely go ahead, and we look forward to welcoming a lot of people into the library to hear Annie's story!

To attend a program or event at the library, you will be able to enter and leave the building through the automatic doors on the Magellan Street side. There will be no access to the library beyond the ground floor.

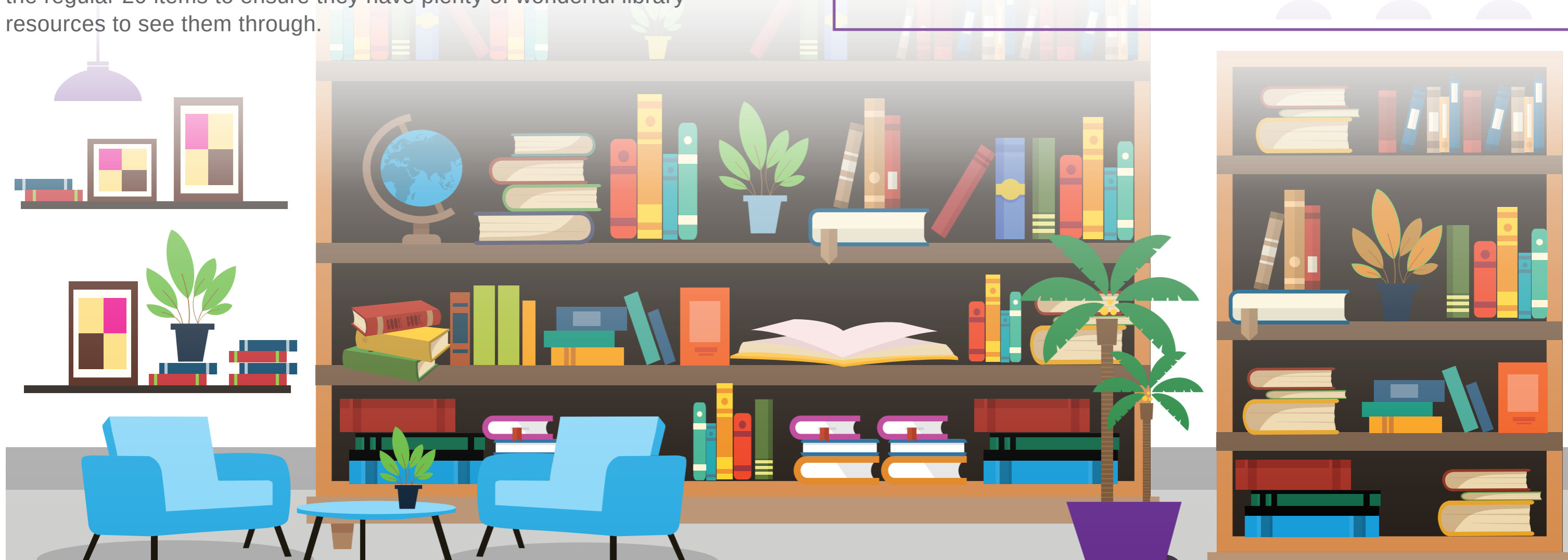
In the lead up to this closure patrons are welcome to borrow more than the regular 20 items to ensure they have plenty of wonderful library resources to see them through.

If you want to borrow items during the closure, the Goonellabah Library will be open for extended hours with extra staff to cover the expected demand. Goonellabah Library will be open during this period from 9.30am to 5pm Monday to Friday; 9am to 1pm Saturday and 1pm to 4pm on Sunday. You will find Goonellabah Library at 27 Oliver Avenue, Goonellabah.

There are two public PCs available at Goonellabah Library. There are three public PCs available at the Genealogy Library at 6 Centenary Drive, Goonellabah. If you have need of these during the closure we suggest you book ahead.

The Lismore Library will be reopening on Saturday 30 November and we look forward to showing off our great new space.

If you have any questions, or wish to check whether an activity is happening please phone the Lismore Library on 02 6621 2464, or the Goonellabah Library on 02 6625 1235.



DEVELOPMENT CONSENTS ISSUED

ENVIRONMENTAL PLANNING AND ASSESSMENT ACT

In accordance with the provisions of Section 101 of the Act and Clause 124 of the EP&A Regulation, notification is given that the undermentioned developments have recently been granted consent.

10/77-5 82, 130 and 138 Cameron Road, Boat Harbour: Section 4.55(1A) modification to delete the requirement to construct a fire trail.

15/63-3 19 Elliott Road, South Lismore: Section 4.55(1A) modification to stage the development into 2 stages.

17/75-2 126 Quilty Road, Rock Valley: Section 4.55(1A) modification to reduce the size of the building and alter the floor plan.

17/320-3 752 Ballina Road, Goonellabah: Section 4.55(1) modification to amend driveway design so retaining walls are not required on lot 3.

19/201 645 Whian Whian Road, Whian Whian: To undertake the change of use of a shed to a dwelling with associated alterations and additions.

19/232 50 Gungas Road and 200 Tuntable Falls Road, Nimbin: To undertake a two lot boundary adjustment subdivision.

19/264 8 Eastside Place, East Lismore: Demolition of a dwelling (single storey timber-framed brick dwelling with tiled roof, on brick and concrete piers to ground level including the removal of piers and footings to 1m) and the removal of three trees.

19/296 57 Casino Street, South Lismore: Raise existing dwelling.

19/301 5 Pinecrest Drive, Goonellabah: Dwelling and retaining walls.

19/304 8 Renwick Street and 4 Milton Street, Lismore Heights: To change the use of an existing garage to a secondary dwelling and to undertake associated building alterations and additions.

19/329 39 Phillip Street, Goonellabah: Inground swimming pool.

19/331 12 Cook Road, Marom Creek: Inground swimming pool.

19/332 9 Arlington Court, Goonellabah: Garage and tree removal.

19/333 712 Broadwater Road, Broadwater: Extension to farm shed.

19/334 11 Eucalypt Grove, Goonellabah: Dwelling additions and alterations.

19/338 27 Lomandra Avenue, Caniaba: Inground swimming pool.

19/340 586 Ballina Road, Goonellabah: Dwelling addition (deck).

19/345 49 Deegan Drive, Goonellabah: Carport with building line variation to 0m to Deegan Drive.

Details of applications and consents, together with conditions attached, may be inspected at Council's Corporate Centre during business hours or via DA Tracking at www.lismore.nsw.gov.au.

DEVELOPMENT PROPOSALS

ENVIRONMENTAL PLANNING AND ASSESSMENT ACT

As the consent authority, Council has received the following development applications for consideration.

DA NUMBER: 92/523-3

LOCATION AND DP LOT: 72 River Bank Road, Monaltrie (Lot 4 DP 701527).

APPLICANT: Santin Quarry Products.

DESCRIPTION: Section 4.55(2) modification to extend the life of the quarry for an additional 25 years from 12 May 2020.

CLOSING DATE: 4 December 2019.

If you wish, you may make a submission to the Council in relation to the development application.

The above development applications and Statement of Environmental Effects may be inspected at Council's Corporate Centre, 43 Oliver Avenue, Goonellabah, during ordinary office hours or via DA Tracking at www.lismore.nsw.gov.au.

Further information relating to written submissions is available on Council's website. There are laws regarding the mandatory disclosure of political donations in relation to planning matters. Political donations disclosure reporting forms are available from the Department of Planning at www.planning.nsw.gov.au.

HEPBURN LIGHTING



New state-of-the-art lighting has been installed at Hepburn Park in Goonellabah which will allow more use of the grounds at night.

The park is growing in popularity as more people take up sport to stay fit and healthy. It is currently the home of the Lismore Touch Association, Oztag and a number of one-off events like the Samson Challenge.

The \$218,000 investment brings the lighting up to Australian Standards, which means players can better see the ball at night. It also greatly reduces the spill lighting upon neighbouring residents in the new Waterford Park Estate.

The new lights will also cut power consumption by half. This is great for both the environment and for clubs and associations who use the sports facility.

The project was funded under the NSW Stronger Country Communities Fund (SCCF) with the Lismore Touch Football Association also contributing.

New grandstands have also been recently installed at the North Coast Regional Hockey Centre in Goonellabah. Also funded under the SCCF, the \$154,000 project provided an additional 360 seats in the shade for spectators.

ON PUBLIC EXHIBITION

Planning proposal to amend the Lismore Local Environment Plan at 55 Palmers Road, Mcleans Ridges.

At its Ordinary Meeting on 16 July 2019, Lismore City Council resolved to support a Planning Proposal to amend the Lismore (LEP) 2012 to rezone part of 55 Palmers Road, McLeans Ridges (Lot 28 DP 1130169) from Zone RU1 Primary Production to Zone R5 Large Lot Residential in accordance with the *Environmental Planning and Assessment Act 1979* to enable the creation of one additional lot.

The Planning Proposal seeks to amend the minimum lot size for land proposed to be rezoned to Zone R5 from 40ha to 2ha and apply a building height of 8.5m to part of the land consistent with other R5 zoned land.

On 20 September 2019 the Department of Planning, Industry and Environment issued a Gateway Determination with standard conditions. The Minister for Planning has delegated the finalisation of the LEP to Council.

The Planning Proposal is on public exhibition from 7 November to 6 December 2019. Copies of the Planning Proposal, Gateway Determination and technical studies are available at the front counter of Council's Corporate Centre, 43 Oliver Avenue, Goonellabah and on Council's web site www.lismore.nsw.gov.au by following the 'Your Say Lismore' link.

Submissions to the Planning Proposal outlining grounds of objection or support must be in writing and addressed to the General Manager, Lismore City Council, PO Box 23A, Lismore or emailed to council@lismore.nsw.gov.au. For enquiries, please contact Sally Slater, Strategic Planner on phone: 1300 87 83 87.

Submissions must be received by close of business on Friday 6 December 2019.



ON PUBLIC EXHIBITION

Planning proposal to amend Schedule 1 additional permitted uses of the Lismore Local Environment Plan at 1112 Bruxner Highway, McKees Hill.

At its Ordinary Meeting on 16 July 2019, Lismore City Council resolved to support a Planning Proposal to amend Schedule 1 Additional Permitted Uses of the Lismore LEP 2012 to allow additional permitted uses on part of the land at 1112 Bruxner Highway, McKees Hill (Part Lot 4, DP 614912) in accordance with the *Environmental Planning and Assessment Act 1979*.

The objective of the planning proposal is to enable the use of part of the site for a 'Transport Depot' which is currently prohibited under Zone RU1 Primary Production.

On 13 August 2019 the Department of Planning, Industry and Environment issued a Gateway Determination with standard conditions including that a Land Use Conflict Risk Assessment be undertaken. The Minister for Planning has delegated the finalisation of the LEP to Council.

The planning proposal is on public exhibition from 7 November to 6 December 2019. Copies of the planning proposal, Gateway Determination and technical studies are available at the front counter of Council's Corporate Centre, 43 Oliver Avenue, Goonellabah and on Council's web site www.lismore.nsw.gov.au by following the 'Your Say Lismore' link.

Submissions to the Planning Proposal outlining grounds of objection or support must be in writing and addressed to the General Manager, Lismore City Council, PO Box 23A, Lismore or emailed to council@lismore.nsw.gov.au. For enquiries, please contact Sally Slater, Strategic Planner on phone: **1300 87 83 87**.

Submissions must be received by close of business on Friday 6 December 2019.



UPCOMING MEETINGS

The next ordinary meeting of Lismore City Council will be held on Tuesday, November 12 from 6pm in the Council Chambers.

All relevant business papers, minutes and live webcasts can be found at www.lismore.nsw.gov.au



PROPOSED ROAD CLOSURE

Notice is given that Council proposes to close an unnamed Council public road adjoining part of 170A and 172 Lagoon Grass Road, Goonellabah under section 38B Roads Act 1993 (plan available upon request). Upon closure of the road, Council intends to sell the land to an adjoining landowner.

Any person can make a written submission to the Property and Legal Services Officer, Lismore City Council, PO Box 23A, Lismore, NSW 2480 or email council@lismore.nsw.gov.au with correspondence marked 'Proposed Road Closing – CDR19/1201' by 4pm on 4 December 2019. Under the provisions of the Government Information (Public Access) Act 2009, such submissions may be referred to third parties for consideration.

Once the submission period is concluded, Council will consider all submissions and decide on road closure suitability.





CONTACT US:
1300 87 83 87

Corporate Centre: 43 Oliver Avenue, Goonellabah

Hours: Monday to Friday, 8.30am to 4.30pm

Post: PO Box 23A, Lismore, NSW 2480

Email: council@lismore.nsw.gov.au

Web: www.lismore.nsw.gov.au



Find us on Facebook and
YouTube or follow us on Twitter.

