

LOCAL MATTERS

LISMORE CITY COUNCIL NEWS
ISSUE 165, 20 MAY 2020



WWW.LISMORE.NSW.GOV.AU



EASING OF COVID-19 RESTRICTIONS

The easing of restrictions by the NSW Government will allow more businesses to open up, more people to stay in work and more personal freedoms.

After assessing National Cabinet's new framework, the NSW Government is easing restrictions and allowing the following from Friday, 15 May.

- Outdoor gatherings of up to 10 people.
- Cafes and restaurants can seat 10 patrons at any one time.
- Up to five visitors to a household at any one time.
- Weddings up to 10 guests.
- Indoor funerals up to 20 mourners, outdoor funerals up to 30.
- Religious gatherings/places of worship up to 10 worshippers.
- Use of outdoor equipment with caution.
- Outdoor pools open with restrictions.

For full details visit www.nsw.gov.au/covid-19.



SHOP LOCAL AND SUPPORT OUR BUSINESSES

As restrictions slowly start to ease, Council once again encourages people to shop local whenever you can.

Our local businesses have been hit by bushfire, drought, flood and COVID-19 within the last six months.

We want to see all our businesses reopen and thrive post-COVID-19.

.....
By shopping local, you will be supporting our local economy and, importantly, local jobs.

Ask your family and friends to do the same.
.....

To help our businesses, Council has set up a business support page on our website to bring together in one place available grants and other assistance. We have also joined forces with Australia's most powerful grant search engine, Grant Guru, to deliver a free one-stop-shop website for business and community grants.

For view these tools, visit www.lismore.nsw.gov.au.



OPEN

FOR BUSINESS

**We are resuming as many
Council services as possible as
COVID-19 restrictions are eased.**

- Lismore City Council's Corporate Centre will reopen from Monday, 18 May. Opening hours are Monday to Friday from 8.30am to 4.30pm. Please note, no cash will be accepted until further notice.
- Tape on playgrounds, skateparks and BBQ areas has been removed and people are once again free to use the equipment. We strongly recommend that you sanitise hard surfaces before use. Please note Heritage Park will remain closed until its upgrade is complete.
- Other services will be resumed as restrictions are eased. Please visit our COVID-19 page via www.lismore.nsw.gov.au for updates or keep an eye on our Facebook page.

Easing of Waste Restrictions

Bookings are no longer required to visit the Lismore Recycling & Recovery Centre or the Nimbin Transfer Station.

Below is what you may currently dispose of at these facilities.

Lismore Recycling & Recovery Centre: General waste and green waste (fees apply) and recycling (free). Recycling includes cardboard, paper, glass, plastics and aluminium.

Nimbin Transfer Station: General waste only (fees apply).

Household items for the Revolve Shop and hazardous wastes are still not being accepted at this time and the Revolve Shop and Brewster Street Drop-off Centre remain closed until further notice.

The Return and Earn bulk collection centre is open Wednesday to Saturday from 8am to 3pm.

The Lismore Recycling & Recovery Centre is open Monday to Saturday from 8am to 3pm and the Nimbin Transfer Station is open Monday to Friday from 8am to 3pm.

Please note that all visitors must pay using electronic payment – cash is not being accepted at this time.

For further information, visit www.northernriverswaste.com.au or phone 1300 87 83 87.



YOUR FEEDBACK WANTED

YOUR FEEDBACK WANTED PLAN FOR A HEALTHY FUTURE

Lismore City Council is calling on the community to provide feedback on the new draft Lismore Sport and Recreation Plan.

The draft plan has been developed after extensive community consultation and we are now asking feedback from the wider community.

This is an opportunity for residents to have their say about the future of recreation in our city and villages.

The Plan looks to cement Lismore's position as a regional sports hub to drive economic growth and increase sport and recreational opportunities for local families to improve well-being and quality of life.

The draft Plan has six priorities:

- Deliver Lismore Parklands.
- Increase physical activity/participation by developing a walking and cycling strategy.
- Continue to develop Lismore as a sports hub.
- Support the rail trail development.
- Develop an open space strategy.
- Ensure existing and new facilities are sustainable.



The Plan is on public exhibition for community comment until 29 May 2020.

It can be viewed online via Lismore City Council's community engagement hub Your Say Lismore at yoursay.lismore.nsw.gov.au.

Submissions can be made online, emailed to council@lismore.nsw.gov.au or sent to the General Manager, Lismore City Council, PO Box 23A, Lismore, NSW 2480.

YOUR FEEDBACK WANTED

PLAN FOR LISMORE'S FINANCIAL FUTURE

Council is pleased to present the Imagine Lismore Draft 2020-2021 Operational Plan including the Draft 2020-2021 Revenue Policy and Borrowings and Fees and Charges for the community's review and feedback.

The Draft 2020-2021 Operational Plan is the fourth year of the 2017-2021 Delivery Program, which is developed to provide the detailed information about Council's projects, services and major programs planned for that financial year.

While we have been faced with difficult circumstances this year, Councillors and staff have worked hard to deliver an Operational Plan that can both maintain the service levels expected by the community and ensure the viability of Council funds in the long term.

Some key features of the upcoming plan are:

- \$12.9m of roads construction for – Blue Knob, Coraki, Dunoon, Nimbin, Alphadale, Boatharbour, Caniaba, Cowlong, Gungas, Johnston, Rock Valley, Stoney Chute and The Channon Roads, and Orion, Diadem and Keen Streets.
- \$7.85m of roads maintenance to help clear the significant backlog in roadworks.
- Investment of \$4.2m in improvements to the Lismore Regional Airport through a Federal Government grant.
- Investment of \$4.7 m in upgrades to Oakes Oval and Crozier Field through State and Federal Government funding.
- Investment of \$1.5m in CBD revitalisation through State Government funding.
- Investment of \$2.3m in Nimbin and Lismore Showgrounds through the Federal Government.
- Council is retaining funding to its two signature events, the Lismore Lantern Parade and Eat the Street. Other events will be funded when grants become available.

- Council will review visitor information services and will ensure that they meet expectations of online information delivery.
- Council will close the Brewster Street Drop-off Centre due to safety concerns.
- Tip vouchers will not be available this year but will be reissued in the 2021-22 financial year.

Please take some time to review the documents and provide Council with your comments. Draft copies of these documents are available via Your Say Lismore at yoursay.lismore.nsw.gov.au.

Following the exhibition period and the receipt of public comments, this matter will be reported back to Council for final adoption at the 16 June extraordinary meeting, including all submissions received during the exhibition period.

We value your feedback and appreciate any input you may have.

You can provide your feedback via a submission in the following ways:

Online via yoursay.lismore.nsw.gov.au

In writing to the General Manager, Lismore City Council, PO Box 23A, Lismore, NSW 2480

Via email to council@lismore.nsw.gov.au



.....

**The Operational Plan is
on public exhibition from
13 May to 10 June 2020.**

.....



DEVELOPMENT CONSENTS ISSUED

ENVIRONMENTAL PLANNING AND ASSESSMENT ACT

In accordance with the provisions of Section 101 of the Act and Clause 124 of the EP&A Regulation, notification is given that the undermentioned developments have recently been granted consent.

DA17/422-2 10 Evelyn Way, Nimbin: Section 4.55(1A) application to modify condition 35 in relation to telecommunication services.

DA18/151-2 28 Bruxner Highway, South Lismore: Section 4.55(1A) application to modify the approved advertising structures (Condition 1) to incorporate an amended pylon sign and minor amendments to Zones 1a and 2.

DA18/289-2 115 Arkinstall Road, Tuntable Creek: Section 4.55(1A) modification to include a pergola over the approved deck on the western façade.

DA19/212 53 Cedar Drive, Dunoon: Dwelling.

DA19/268-2 3 and 5 Foleys Road, South Lismore: Section 4.55(1A) application to modify consent 5.2019.268.1 to reduce the width of the shed so that it is not located within 3m of a boundary so as to delete the requirement for the shed to be fire rated.

DA19/292 1 Bounty Street, Lismore: To undertake the erection of a free-standing 7.4m pole/pylon sign with LED display to be used to advertise shows/events at the City Hall, community events and emergency service announcements.

DA19/302-2 1 Pinecrest Drive, Goonellabah: Section 4.55(1A) modification to the approved cut and fill works and to construct a retaining wall.

DA19/355-2 5 Pinecrest Drive, Goonellabah: Section 4.55(1A) modification to position shed 4m south of approved location.

DA19/424 13 Thorburn Street, Nimbin: Secondary dwelling.

DA19/429 174 Skyline Road South, Wyrallah: Change of use of a building to a dwelling to create a detached dual-occupancy.

DA20/4 109 Boatharbour Road, Boat Harbour and 92 Richmond Hill Road, Richmond Hill: Subdivision (boundary alteration).

DA20/20 387 Tuntable Falls Road, Nimbin: To undertake alterations and additions to an existing approved dual occupancy building; 1) change of use of part of an existing outbuilding to an expanded dwelling bedroom; and 2) construction of a new detached expanded dwelling bedroom ancillary to the dual occupancy building.

DA20/37 58 Just Street, Goonellabah: Dwelling house with a building line variation to 4.143m to Just Street.

DA20/48 52 Stony Chute Road, Nimbin: Covered deck extension attached to the existing dwelling and a detached machinery shed.

DA20/53 43 Conte Street, East Lismore: Two-storey dwelling and retaining walls.

DA20/54 41 Conte Street, East Lismore: Two-storey dwelling.

DA20/80 239 Tuntable Creek Road, The Channon: Dwelling.

DA20/85 18 Spurfield Road, Boat Harbour: Dwelling and shed.

DA20/86 84 Cameron Road, Boat Harbour: Dwelling and swimming pool.

DA20/91 69 Coleman Street, Bexhill: Alterations and additions to existing dwelling.

DA20/93 94 Cameron Road, Boat Harbour: Dwelling (staged development) and shed.

DA20/99 23 Cavendish Road, Goonellabah: Two-storey dwelling.

DA20/101 19 Spurfield Road, Boat Harbour: Shed.

DA20/106 2 Magnus Court, Goonellabah: Dwelling.

DA20/108 17 Rous Road, Goonellabah: Demolition and removal of a house and shed.

DA20/114 22 John O'Neill Circuit, Goonellabah: Inground swimming pool.

DA20/119 45 Whispering Valley Drive, Richmond Hill: Dwelling addition (patio awning) and freestanding cabana.

Details of applications and consents, together with conditions attached, may be inspected at Council's Corporate Centre during business hours or via DA Tracking at www.lismore.nsw.gov.au.

DEVELOPMENT PROPOSALS

ENVIRONMENTAL PLANNING AND ASSESSMENT ACT

As the consent authority, Council has received the following development applications for consideration.

DA NUMBER: 20/149

LOCATION AND DP LOT: 100 Bishops Creek Road, Coffee Camp (Lot 21 DP 1161719).

APPLICANT: GM Project Development and Management.

DESCRIPTION: The erection of a dwelling to create a detached dual occupancy, inclusive of an LEP Clause 4.6 variation to the requirement that each dwelling will be situated within 100m of each other.

CLOSING DATE: 17 June 2020.

If you wish, you may make a submission to the Council in relation to the development application.

The above development applications and Statement of Environmental Effects may be inspected at Council's Corporate Centre, 43 Oliver Avenue, Goonellabah, during ordinary office hours or via DA Tracking at www.lismore.nsw.gov.au.

Further information relating to written submissions is available on Council's website. There are laws regarding the mandatory disclosure of political donations in relation to planning matters. Political donations disclosure reporting forms are available from the Department of Planning at www.planning.nsw.gov.au.

HOSPITAL PARKING MAP

Lismore City Council has produced a handy parking map to help residents with the introduction of free parking and changed parking restrictions around Lismore Base Hospital.

Council recently introduced free parking in the 10-hour zones on Hunter and Dalziel streets for the next six months and will waive parking restrictions on Weaver Street, Laurel Avenue and McKenzie Street to enable all-day parking for the same six-month period.

Mayor Isaac Smith said this was done in recognition of the critical and selfless role our local health care professionals are undertaking in caring for our community during the COVID-19 pandemic.








Street signage around the hospital precinct has now been amended to reflect these changes.

Council staff have also been educating drivers about the changes to on-street parking around the hospital precinct over the last couple of weeks to ensure people are aware of the changes. Parking patrols have also recommenced.

The parking map can be found on our COVID-19 webpage via www.lismore.nsw.gov.au.



LEGEND

	RESTRICTED PAID PARKING (2P)		NO STOPPING
	RESTRICTED FREE PARKING (2P)		NO PARKING
	RESTRICTED FREE PARKING (4P)		RESIDENTIAL PERMIT ZONE
	UNRESTRICTED FREE PARKING (10P)		

PRACTISE SOCIAL DISTANCING AND ACCESS RELIABLE INFO

As COVID-19 restrictions are progressively eased over the coming months, we all need to remain vigilant and work together to stay safe and support each other.

We urge residents to access information from reliable sources, look after your mental and physical health, and check in regularly with loved ones, friends or a service such as Lifeline for ongoing support.

Council is committed to working with our community through this crisis and maintaining essential services.

We urge everyone to follow the ongoing advice about healthy hygiene practices and social distancing from the Federal and NSW Governments.

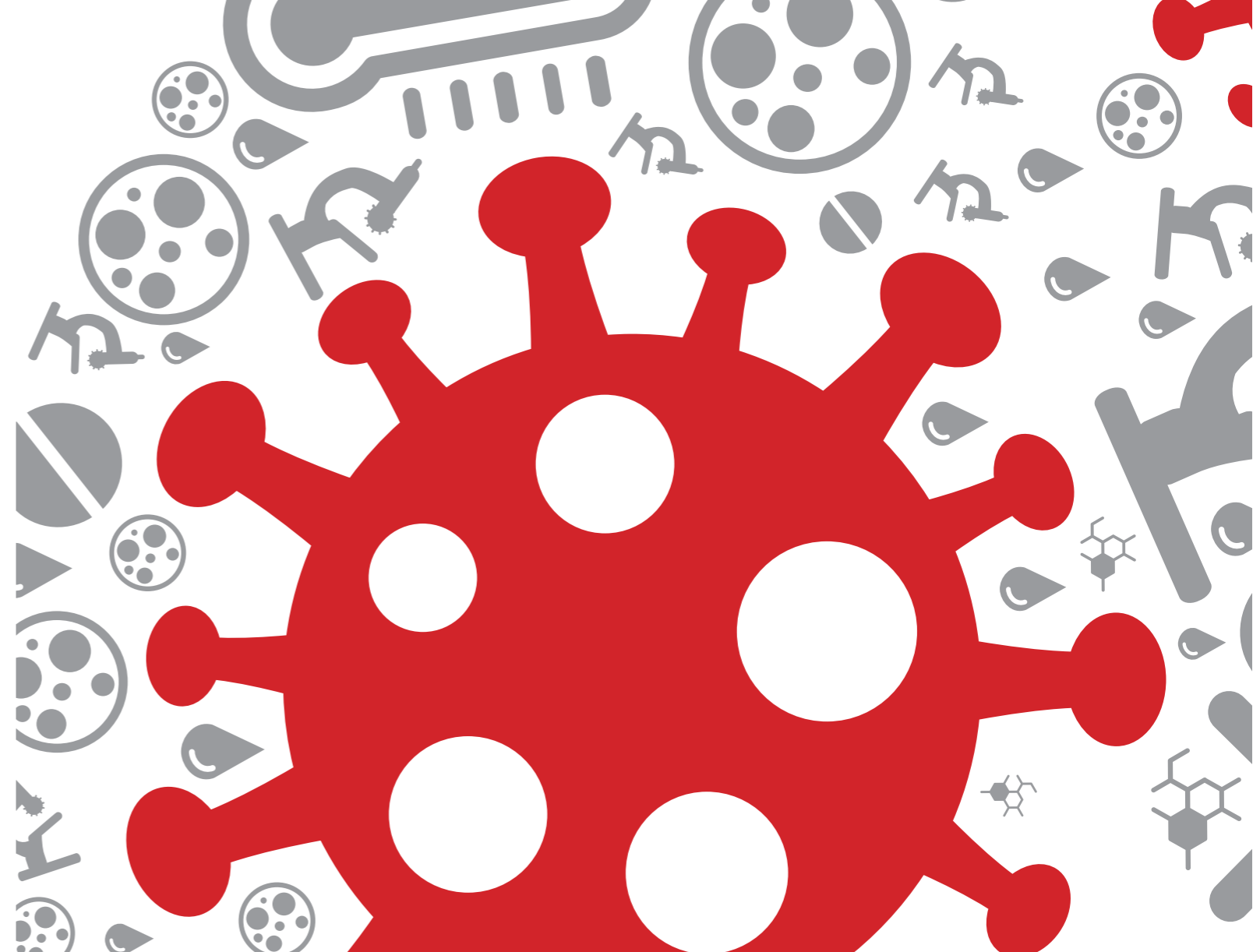
Please follow all the restrictions in place – we need to work together as a community to help one another through this and save lives.

Keep yourself and those around you safe:

- Wash your hands frequently.
- Cover your coughs and sneezes.
- Follow social distancing restrictions.

If you have a fever, cough, sore throat or shortness of breath:

- Phone your GP for advice.
- Phone Health Direct on 1800 022 222.
- Visit the Lismore Base Hospital COVID-19/flu clinic – open 10am to 6pm seven days a week. The clinic is now open for people who are exhibiting mild symptoms of the virus.
- For further information, visit the NSW Health website for details.



Council has a COVID-19 Updates page with the latest information and advice about changes to Council facilities and services. We will continue to update this page as the situation unfolds.

The page also contains important links to useful websites and fact sheets on assistance for residents and businesses. You can ask staff questions online via the Q&A function, join the community forum to share stories and experiences, and subscribe for our newsletter updates.

Visit www.lismore.nsw.gov.au and click on the COVID-19 link.



CONTACT US:
1300 87 83 87

Corporate Centre: 43 Oliver Avenue, Goonellabah

Hours: Monday to Friday, 8.30am to 4.30pm

Post: PO Box 23A, Lismore, NSW 2480

Email: council@lismore.nsw.gov.au

Web: www.lismore.nsw.gov.au



Find us on Facebook and
YouTube or follow us on Twitter.

