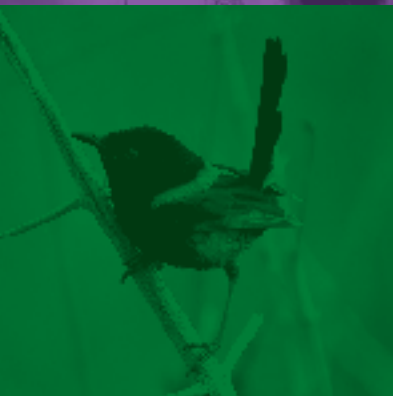




LOCAL MATTERS

LISMORE CITY
COUNCIL NEWS
ISSUE 197, 15 SEPTEMBER 2021



WWW.LISMORE.NSW.GOV.AU



GET INVOLVED WITH THE NEW BUSINESS ACTIVATION PLAN

Lismore City Council has launched its new Business Activation Plan for Lismore and Nimbin.

Its release comes at a time that many of our local businesses are struggling with the financial fall-out from the lockdown.

Mayor Vanessa Ekins said: “The Business Activation Plan aims to encourage people into the area to support our local businesses by providing amenity in summer with more shade and seating, giving people reasons to walk by wayfinding through our laneways and rainbow walking track, buy local campaigns and micro grants for businesses.”

“When our shared spaces are exciting to visit, and events give us more reason to go downtown, our community benefits and so do the businesses we rely on.”

Four themes underpin the Plan: Vibrancy to encourage more people to visit and connect with our CBDs, Experience to ensure our streets are safe and attractive; Promotion to showcase local events, attractions and the business community; and Support to help existing and new businesses to flourish.

The Plan is also COVID-conscious and encourages businesses to use digital tools for events and engagement, including going virtual if necessary to promote our local businesses and community to wider audiences.

We are now inviting expressions of interest to get involved in a Business Activation Working Group, to review outcomes, give feedback and help develop further planning. **EOIs close 2pm Monday, 20 September 2021.**

There are also new Lismore Activation Microgrants and Sponsorship opportunities.

You can find the Business Activation Plan snapshot, details and links to current opportunities at www.lismore.nsw.gov.au/business-activation-plan



POWERED BY THE SUN

Lismore will soon get its first Electric Vehicle (EV) charging station in the heart of the CBD.

Lismore City Council recently accepted a tender to design and construct a \$600,000 'Solar Carpark' in the Council-owned Clyde Campbell carpark. The infrastructure includes the installation of an architectural 'butterfly-shaped' awning, clad with photo-voltaic solar panels and covering 40 carparks. It also includes the installation of two EV fast chargers, making them Lismore's first.

The project will provide much-needed shade for visitors to the CBD, with excess solar energy fed back into the electricity grid.

Our community has consistently said they want Council to tackle the impacts of climate change, increase the use of renewable energy and provide more shade throughout the Lismore CBD for locals and visitors. This project delivers on all of that and will also provide an electric car-charging station for Lismore.

The solar carpark is funded through a \$1 million grant provided by the Federal Government's Drought Communities Program to 52 NSW councils to complete infrastructure and other drought-relief projects.

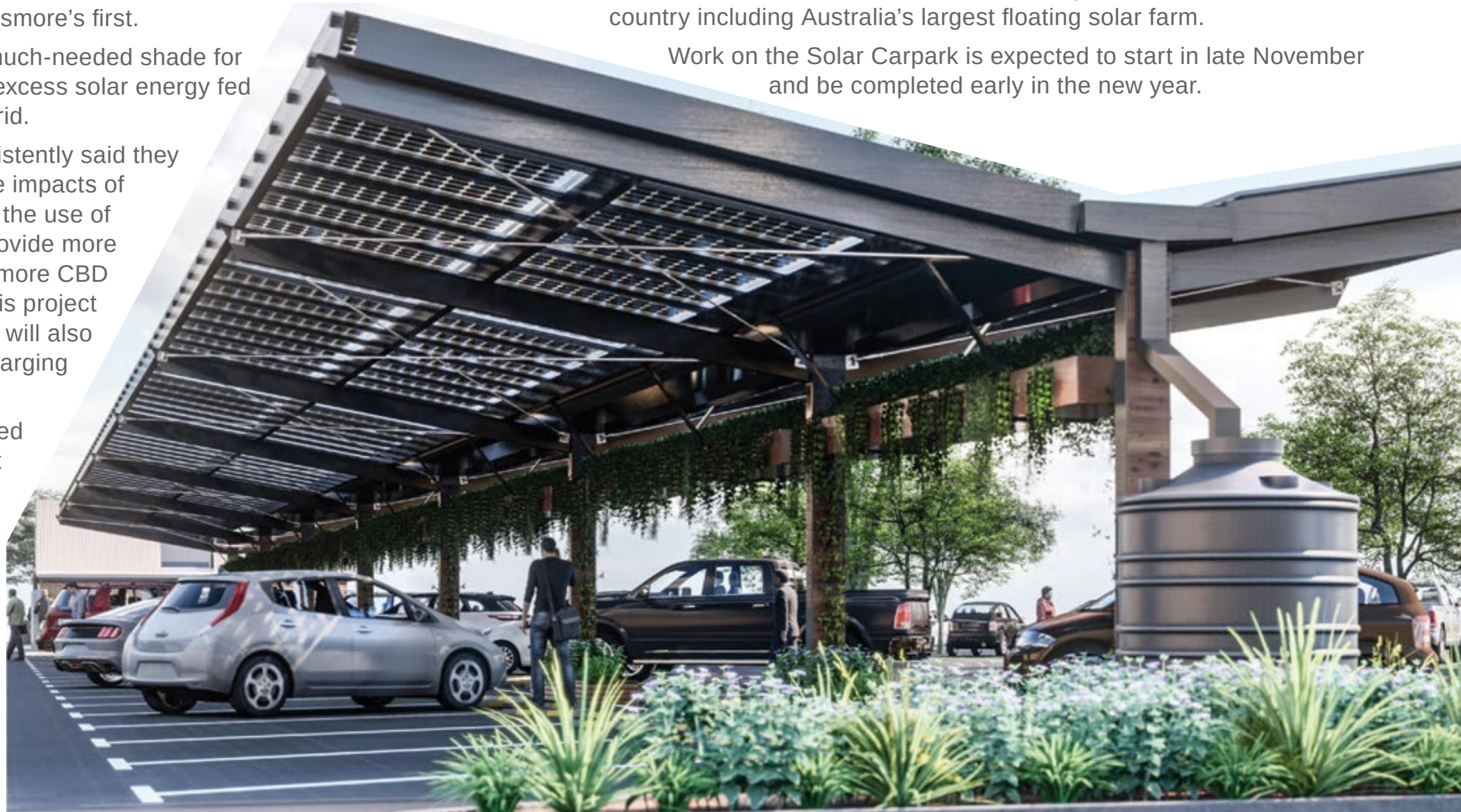
The sustainable design and shape of the roof is inspired by the native Richmond Birdwing Butterfly. The Birdwing Butterfly vine – the butterfly's food source – will grow on the shade structure from hanging planter boxes.

The height of the structure means it will not be impacted by flood events.

Lismore City Council has a long history of developing innovative solar projects to reduce emissions and mitigate against climate change.

In 2018, Council and Farming the Sun launched the Lismore Community Solar initiative – the first Council/community owned solar farm in the country including Australia's largest floating solar farm.

Work on the Solar Carpark is expected to start in late November and be completed early in the new year.



HOW'S THE SERENITY? SO MUCH SERENITY

Once again, this edition of Local Matters had to be at the printers before the announcement of whether the lockdown will be lifted as planned at midnight on Friday, 11 September.

The lockdown has been tough for everyone, but whether it is lifted or not exercising is allowed so why not get outside and take one of our popular nature walks around urban Lismore.

We reckon even the Kerrigan family would much rather spend their lockdown in the beautiful Northern Rivers than in Bonnie Doon.

A 60-minute walk in nature, compared with a 60-minute urban walk, has a much more positive impact on mental well-being. That's because a walk in nature

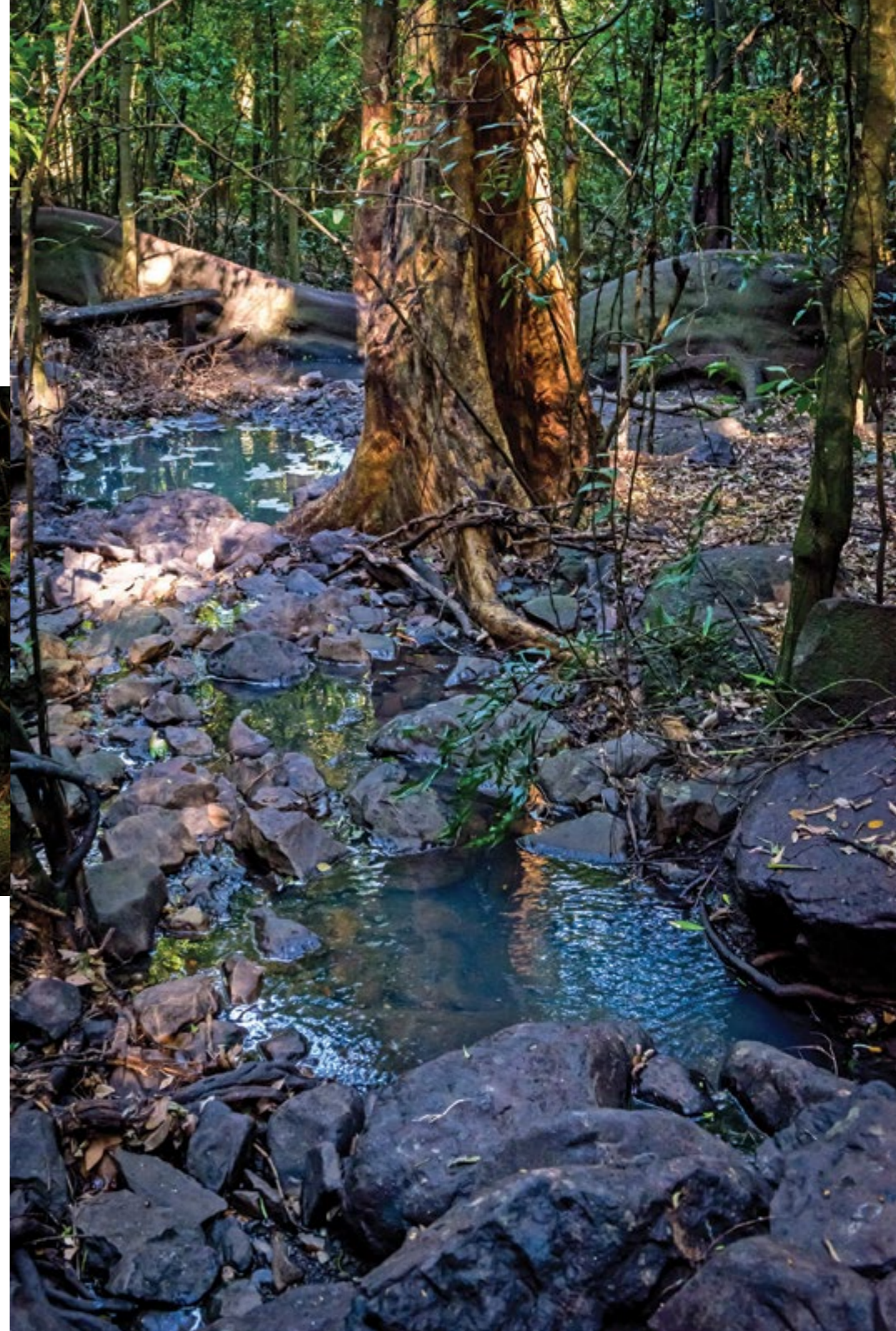
reduces neural activity associated with the part of the brain that triggers rumination or over-thinking, known to heighten the risk of depression.

Download our [Feel Blue, Touch Green](#) brochure to 'take a walk on the wild side' near you – there's lots to choose from.

You can find it at www.lismore.nsw.gov.au.

We have also just removed barriers on the popular Birdwing Butterfly Gully walking path from Kadina Street to make it more accessible, including for those who use wheelchairs.

Unfortunately, the Rotary Park walk is currently closed.





MICRO ARTS GRANTS AVAILABLE

Applications are now open for Arts Northern Rivers Micro Grants.

Responding to the COVID-19 pandemic and the state-wide lockdowns in NSW, the quick response grants of up to \$1000 are available to support the region's creative community. Independent practicing artists or organisations working across all art forms are eligible to apply.

Designed to support the Northern Rivers arts and cultural community in maintaining their creative endeavours in unprecedented times, this funding aims to be as flexible as possible. Projects do not require a specific outcome but can focus on skills development or capacity-building.

Individuals or arts organisations must be based in the Northern Rivers region to apply. Proposed projects or activity must be arts related and in response to hardship due to the effects of COVID-19 on the community.

Arts Northern Rivers will consider a wide range of requests that adhere to restrictions and social distancing requirements. Applications for arts related projects can include online activity exploring workshop delivery, professional development, exhibitions, marketing and more. Creatives looking for assistance in delivering arts activities during an 'at home residency' can also submit applications, along with many more creative endeavours considered.

Applications are now open and close on Wednesday, 22 September 2021

For more information and to apply, go to
www.artsnorthernrivers.com.au



ARE WE OUT OF LOCKDOWN YET?

This edition of *Local Matters* had to go to the printer before any announcement whether the lockdown will be lifted as planned at midnight on Friday, 11 September.

However, indications look good that lockdown will be lifted.

We will keep the community updated on our Facebook page and website at www.lismore.nsw.gov.au about what restrictions remain in place and any changes to how Council delivers its services.

We understand and share the community's frustration, but we ask that you continue to follow all COVID-19 guidelines to ensure we remain safe from the virus.

Always get your information from reputable websites such as NSW Health at www.nsw.gov.au and Council's Facebook page.

If you have even the mildest of cold or flu symptoms, please get tested.



DEVELOPMENT CONSENTS ISSUED

ENVIRONMENTAL PLANNING AND ASSESSMENT ACT

In accordance with the provisions of Section 101 of the Act and Clause 124 of the EP&A Regulation, notification is given that the undermentioned developments have recently been granted consent.

APPLICATION DETAILS

DA21/163 29 Cathcart Street, Girards Hill: Removal of a Paper Bark tree in a Heritage Conservation Area.

DA21/188 8 Eastside Place, East Lismore: To undertake the erection of a multi-dwelling housing development (3 dwellings) and associated driveway, civil works, earthworks, tree removal and landscaping.

DA21/191 9 Sawyers Avenue, Goonellabah: Three storey dwelling and detached carport with a building height variation to 9.343m.

DA21/233 74 James Street, Dunoon: Demolition of existing garage and alterations, and additions to an existing dwelling to create expanded dwelling and garage.

DA21/246 6 Pearson Road, Eltham: Dwelling addition (Heritage Item).

DA21/252 223A Cameron Road, McLeans Ridges: Inground swimming pool.

DA21/267 27 Uralba Street, Lismore: To change the use of the existing building from a community facility to a residential dwelling.

DA21/272 1 Henderson Place, Modanville: Dwelling alterations and additions with a building line variation to 1.7m to Henderson Place (extend deck and replace gable roof over deck with skillion roof; new deck adjacent to pool; and new verandah).

DA21/302 87 Dalley Street, East Lismore: To change the use of a dwelling to a medical centre (1 consulting room) and associated building alterations and additions, on-site parking, earthworks, vegetation removal, landscaping and signage).

DA21/303 64 Fairview Road, Rosebank: Construction of a new dwelling and decommissioning of existing dwelling.

DA21/360 9 Johnstone Lane, North Lismore: Shed.

DA21/363 863 Kyogle Road, Fernside: Dwelling alterations and additions, and new inground swimming pool.

DA21/385 30 Trinity Drive, Goonellabah: Inground swimming pool.

Details of applications and consents, together with conditions attached, may be inspected at Council's Corporate Centre during business hours or via DA Tracking at www.lismore.nsw.gov.au.





NIMBIN DEVELOPMENT REVIEW AND RESPONSE

PUBLIC EXHIBITION EXTENDED

Due to the extended COVID lockdown affecting Northern Rivers communities, the deadline for submissions to the Review of the Nimbin Development Control Plan Review has been extended until **Friday, 1 October 2021** to give the community more time to make a submission.

Council resolved at its Ordinary meeting of 13 July 2021 to commence public exhibition of amendments to the Lismore Development Control Plan (DCP), specifically the Nimbin DCP and the controls relating to public lighting in village and large lot residential areas.

The proposed amendments to the DCP address some of the key messages expressed in the community survey and written submissions, including restricting development to deal with limited reticulated water supply, retaining certain precincts and heritage controls and introducing a Live/Work precinct. The proposed changes to the Nimbin DCP also update and contemporise planning controls, remove superfluous information, and provide greater consistency with other more recent DCP Chapters.

New controls on street lighting are also proposed to prevent and reduce artificial light pollution in village and large lot residential areas.

The draft amendments to the DCP may be viewed on Council's website www.lismore.nsw.gov.au by following the "Your Say Lismore" link.

Submissions relating to the draft amendments outlining grounds of objection or support can be addressed to the General Manager, Lismore City Council, PO Box 23A, Lismore or sent by email to council@lismore.nsw.gov.au. **For enquiries, please contact Council's Strategic Planner, Sally Slater or Strategic Planning Coordinator, Paula Newman on phone: 6625 0500.**

TENDER T21/20

Provision of Vegetation Services

Lismore City Council is inviting submission from appropriately qualified and experienced tenderers to form part of an unranked panel of suppliers for the provision of the whole of Councils vegetation services requirement, based on capability and experience.

The contract will be for the period of one (1) year with an additional one (1) + one (1) year extension option at Councils absolute discretion.

Tender submissions close at 2pm, Tuesday, 28 September, 2021.

Interested parties are required to register at Council's e-procurement portal to access relevant documents.

www.tenderlink.com/lismore

Submissions may also be lodged at this site in the electronic tender box.

If you experience any difficulties with accessing the above website or require further information, phone the Tender link Helpdesk on **1800 233 533**.

CLICK AND COLLECT NOW AVAILABLE FROM THE LIBRARY

Lismore and Goonellabah libraries have introduced a Click and Collect service to allow the community to borrow books and other items during the lockdown.

As *Local Matters* goes to press, no announcement has been made about whether the lockdown will be lifted as planned.

Should the lockdown continue, both libraries will continue to offer this Click and Collect to the community.

Under the Click and Collect Service, Library members can reserve items, book a collection time, mask up, check in, and show their library card at the door to collect the items. You can reserve items on the library catalogue (accessible from the library website below) or staff can select up to 20 items for you.

Bookings are essential to access this free, contactless service.

Acting Regional Library Manager Lucy Kinsley said: "It's wonderful news that the library can now offer Click and Collect. While the online library is popular, not everyone has internet access or a device to read or listen to a book on."

"This expansion to our service will allow more people to access library items in a time of need. We know there are lots of people home schooling or isolated at the moment, and stories have the power to help us escape to other worlds, especially during lockdown."

You can join the library online for instant access to eBooks, eAudiobooks, and eMagazines, and current members can access the new Click and Collect service.

Please note, under the lockdown all library branches are closed for all services other than Click and Collect and the online library.

For assistance, contact your local library branch or visit www.rtrl.nsw.gov.au. Contact details on the back of your library card.



SUPPORT OUR LOCAL BUSINESSES

The COVID-19 lockdown is affecting us all, including our local businesses that employ local people.

Many of our local restaurants and food shops are offering contact-less takeaways and/or home deliveries. If the lockdown is lifted as planned, take the opportunity to drop in and buy something from a local business, while following any COVID-19 Safety protocols in place.

Items from other local retail stores can also be purchased through their online portal.

At times like this, it's important that the community rallies around our local businesses.

And if you haven't used your Dine & Discover vouchers yet, this is the perfect opportunity.

Please remember to keep our community safe by wearing a mask, maintaining social distancing and always signing in with a Q-code.

If you are a business operator who is experiencing difficulties due to the lockdown, Government assistance packages are available. Please visit www.business.gov.au.

Support for all businesses across NSW includes the 2021 COVID-19 micro-business grant, specifically designed for small business, sole traders or not-for-profit organisations with an aggregated annual turnover between \$30,000 and \$75,000.

For help and to find out if you are eligible, please visit www.service.nsw.gov.au or phone them on **13 77 88**.





CONTACT US: 6625 0500

Corporate Centre: 43 Oliver Avenue, Goonellabah

Hours: Monday to Friday, 8.30am to 4.30pm

Post: PO Box 23A, Lismore, NSW 2480

Email: council@lismore.nsw.gov.au

Web: www.lismore.nsw.gov.au



Find us on Facebook and
YouTube or follow us on Twitter.

