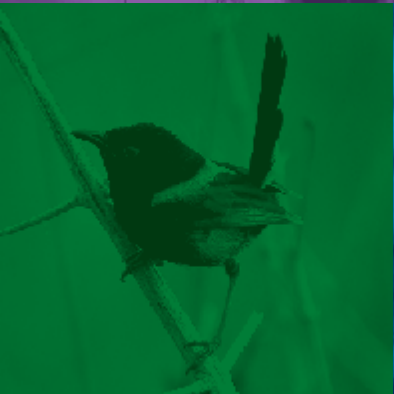




# LOCAL MATTERS

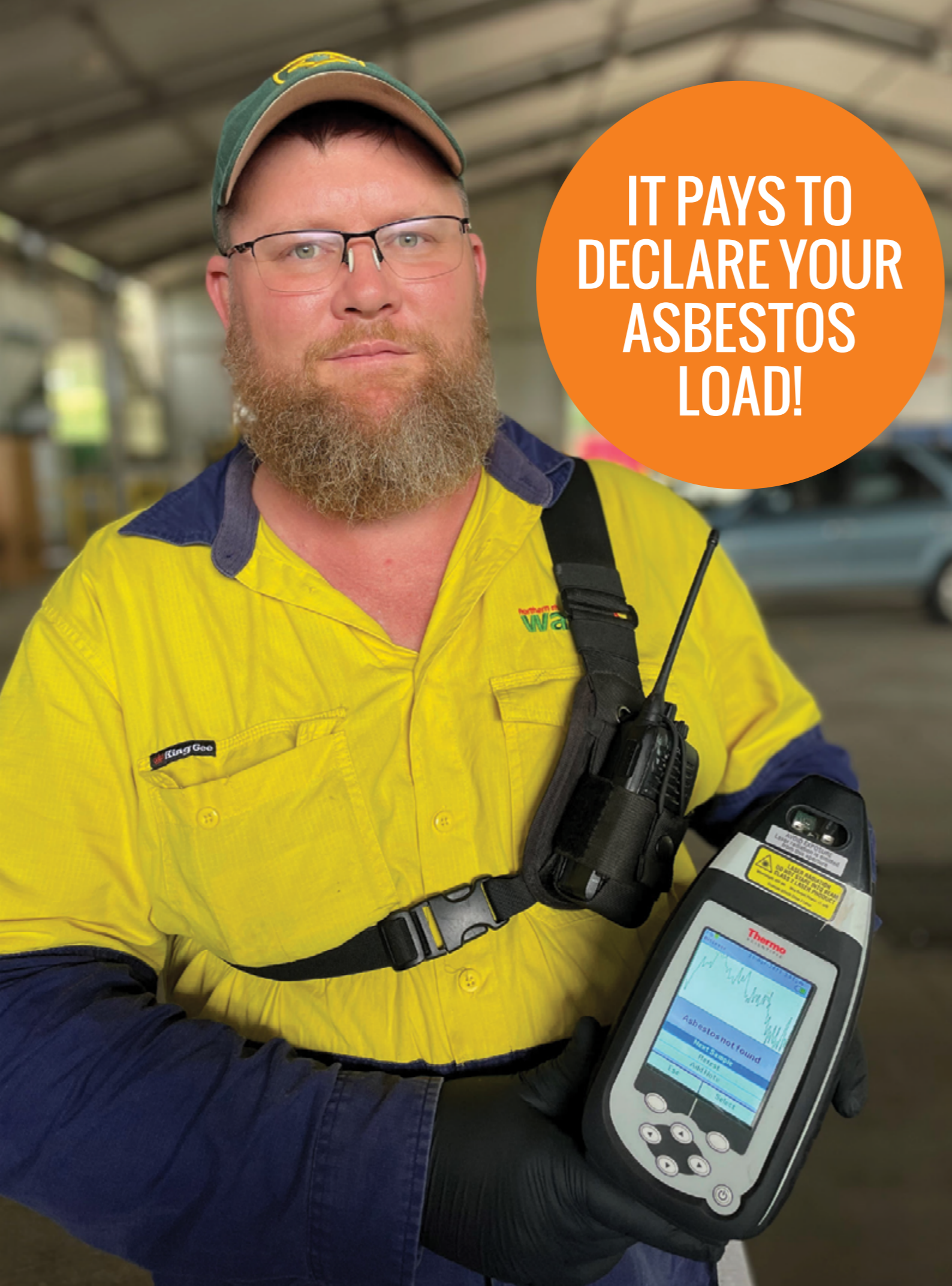
LISMORE CITY  
COUNCIL NEWS  
ISSUE 231, 1 MAY 2023



[WWW.LISMORE.NSW.GOV.AU](http://WWW.LISMORE.NSW.GOV.AU)







**IT PAYS TO  
DECLARE YOUR  
ASBESTOS  
LOAD!**

**There has been an increasing number of incidences of mixed loads of waste containing asbestos materials coming into the Lismore Recycling & Recovery Centre.**

In the last six months, at least 22 loads have been rejected at our Resource Recovery Facility (aka the big shed) as they were found to contain unbagged asbestos. These usually come from a property clean-out, a DIY renovation job or local builders.

If you are bringing in a load of mixed waste, weighbridge staff will ask you to declare any asbestos. If a load is suspected of containing asbestos, Resource Recovery Facility staff will test it with our microPHAZIR asbestos analyser – a tool that can give an on-the-spot result.

If a load containing asbestos hits the floor in one of the unloading bays, staff must close the bay, suit up, wet down the material, double bag it, take it away for disposal and clean the bay. You will be charged a \$496.50 clean-up fee to cover these costs, plus disposal of the waste you've brought in.

It's not as expensive as you may think to dispose of asbestos properly. The average household quantity of 100kg of asbestos, or about 10m<sup>2</sup>, costs about \$43 to properly dispose (there is a minimum charge of \$20). Compare that to having your load rejected or paying a clean-up fee!

**Remember we also have Testing Kits FREE of charge and Disposal Kits available for \$30 at Council's Corporate Centre in Goonellabah and at The Revolve Shop at the Lismore Recycling & Recovery Centre.**

For more information, call Council on **6625 0500** or visit our website at [www.lismore.nsw.gov.au](http://www.lismore.nsw.gov.au) and look for Waste under the Residents & households tab.



# RESIDENTS AT THE HEART OF LISMORE CITY COUNCIL'S NEW WEBSITE

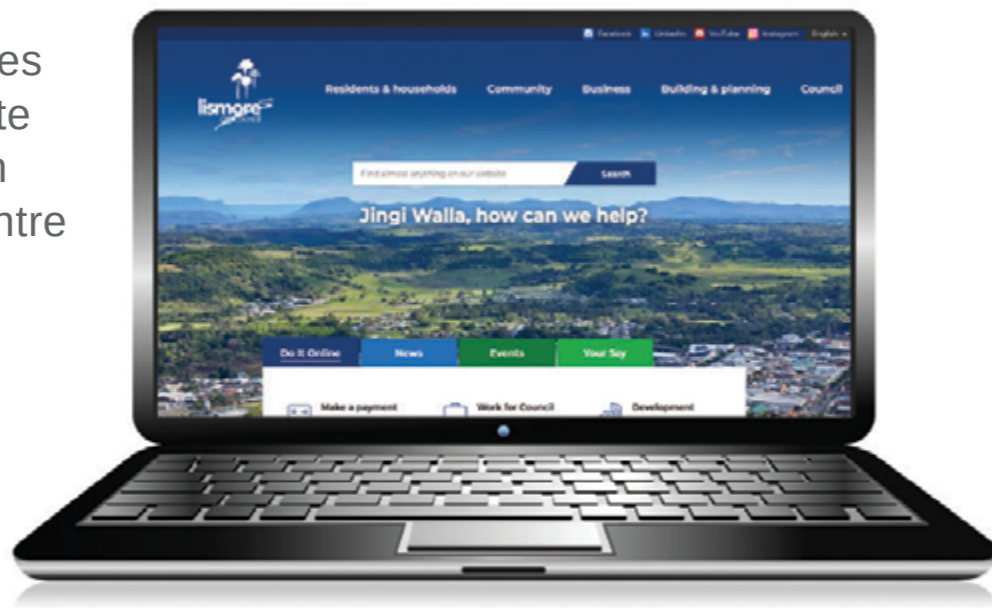
Lismore City Council has launched a new website to provide a fully accessible “one-stop shop” to easily pay rates, find your Bin Day or quickly find the information residents and ratepayers are looking for, plus much more.

The new site combines Council’s previous site with the Goonellabah Sports & Aquatic Centre and Northern Rivers Waste at one easily navigable location.

The new site makes transactions such as paying rates much easier, which means people won’t have to spend their time on the phone with Council.

**The new website at [www.lismore.nsw.gov.au](http://www.lismore.nsw.gov.au) features:**

- a fresh, clean look with useful content that is easy to read
- a mobile-friendly design that looks great on all devices
- a much-improved new search tool that makes information easier to find
- an interactive map that shows services, facilities, events and parks located you
- more photos to showcase the natural beauty of the Lismore and its villages.



Council’s General Manager Jon Gibbons said: “From day one, we knew we had to put our customers, residents, businesses and visitors at the heart of the project to help them find exactly what they’re looking for regardless of location, age, ability or technology,” he said.

“We also tested the new website ahead of launching with our Access and Inclusion Advisory Group to get its feedback to ensure the site is accessible for all.

“We’ll continue listening and making improvements based on the community’s feedback.”

**Let us know what you think. You can provide feedback on the new website by emailing [media@lismore.nsw.gov.au](mailto:media@lismore.nsw.gov.au)**





# HARVEST FOOD TRAIL LEADS TO LISMORE

For the first time, Lismore City Council is co-sponsoring the popular Northern Rivers Harvest Food Trail, creating the opportunity for a record number of Lismore's food producers to be involved.

The Trail, on the weekend of 6 and 7 May, is an annual event which showcases unique local food and beverage producers and has become a major tourism drawcard for the entire region.

The Harvest Food Trail provides visitors and locals with an opportunity to visit some of the best farms, distilleries, breweries and food outlets in the Northern Rivers. It extends from Tweed in the north to Grafton in the south.

Each business on the food trail offers something outside the usual, such as farm tours, 'pick your own' experiences, sampling, demonstrations, sit-down meals with producer talks, behind-the-scenes tours, or festive experiences such as live entertainment on a farm.

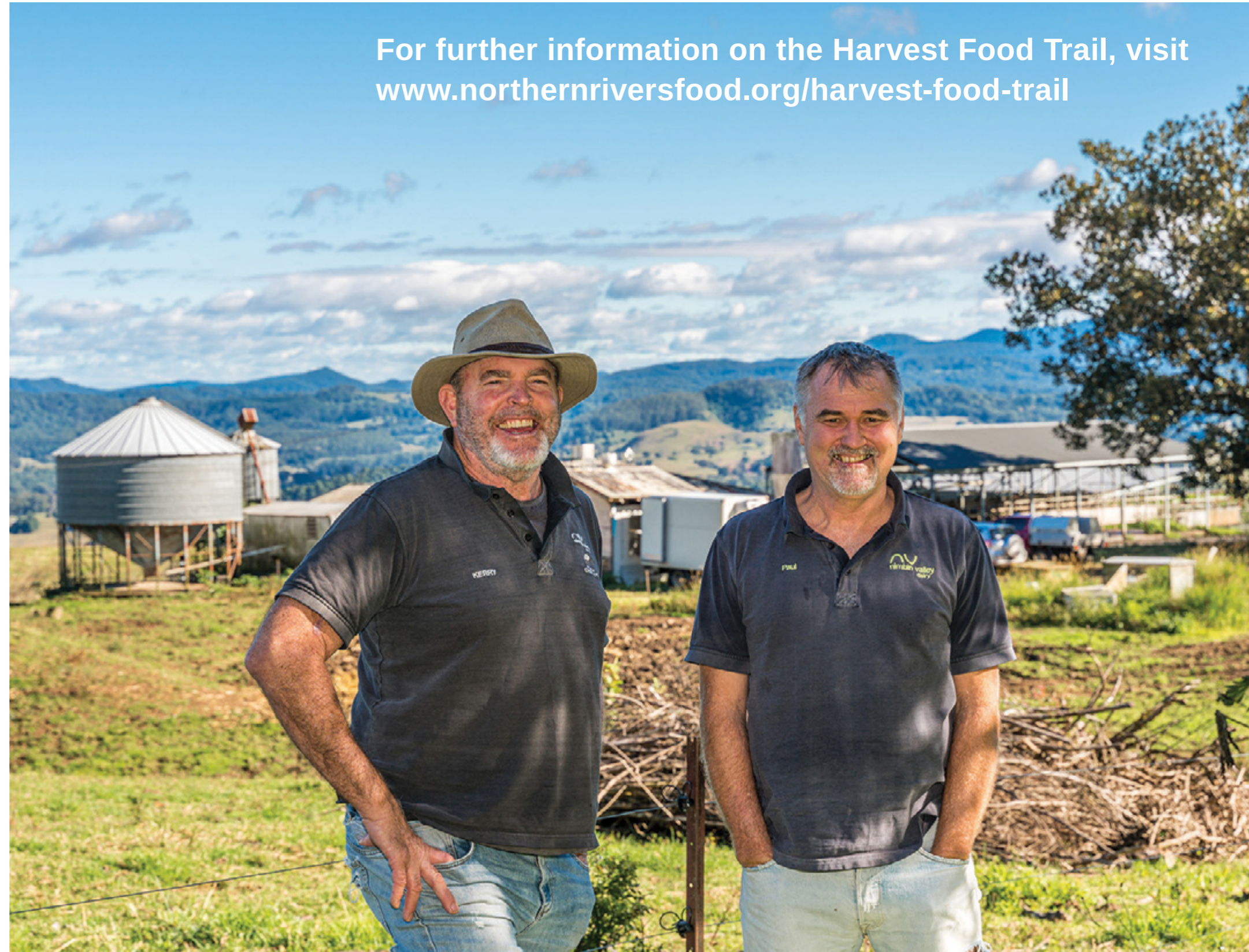
This year, the line-up of food experiences across Lismore, Nimbin and local villages is diverse. Participants range from a dairy and cheesemaking farm in the Nimbin Valley to an organic microgreens and sugarcane farm in South Gundurimba.

## Local participants include:

- **Nimbin Valley Dairy** – a tasting, cheese talk and farm tour
- **Nimbin Bush Theatre** – lunch, producer talk and local musician
- **Dhezi Deli, Bexhill** – selection of tastings from around the world

- **Stockpot Kitchen BBQ Smokehouse, Lismore** – feast event with local beverages and music
- **Five Sixty Farm, South Gundurimba** – a look at an organic micro farm, long lunch and producer insights
- **Clift Sugarcane Farm, South Gundurimbah** – meet the farmers, farm tour and industry talk

For further information on the Harvest Food Trail, visit [www.northernriversfood.org/harvest-food-trail](http://www.northernriversfood.org/harvest-food-trail)





# COME AND EXPERIENCE ACTIVE FEST

**Saturday, 20 May 8:30am – 2:30pm**  
**Goonellabah Sports & Aquatic Centre**

Come along to our Active Fest event at GSAC and experience a range of sports, get physically active and have some fun in a relaxed community environment.

Lismore Active Fest will be held on Saturday, 20 May at the Goonellabah Sports & Aquatic Centre from 8:30am to 2:30pm. It will feature an array of FREE sport workshop activities for participants aged between of 5 and 17-years-old.

## **The workshops include:**

- Fitness Games (5-10yo) conducted by FitnessKidz, one of Lismore's top junior fitness instructors
- Try Pickleball (10yo+), the fastest growing sport in the world that combines tennis, badminton and tables tennis. It's easy to learn and a lot of fun!



- Futsal workshop (6-12yo), the fast-paced indoor soccer sport that is fun for all ages.
- Intro to AcroJazz (5-12yo), kids will have a wonderful time doing cartwheels, tumbles and lots of funky moves in this fun and creative class conducted by North Coast Dance Academy.
- Skateboard Workshop (8yo+), get tips from some of the region's top skate instructors from Truckstop Sk8 and learn how to navigate the skate park in a fun, safe way!
- Swimsations Swim Carnival, featuring fun competitions and novelty events in the 25m pool for ages 8yo and up!

**All events are FREE and registrations are encouraged. For more information call GSAC on 6625 5300 or email [gsac@lismore.nsw.gov.au](mailto:gsac@lismore.nsw.gov.au) for full program information.**

Active Fest events are funded by the NSW Governments Community Sport Rebuild and Recovery Package, and provides financial support, assistance,





# DEVELOPMENT CONSENTS ISSUED

## ENVIRONMENTAL PLANNING AND ASSESSMENT ACT

In accordance with the provisions of Section 4.59 of the Act and Clause 124 of the EP&A Regulation, notification is given that the undermentioned developments have recently been granted consent.

### APPLICATION DETAILS

**DA22/119 144 Flood Reserve Road, Ruthven:** Stage 1: Approval of existing re-sited dwelling and Stage 2: Associated alterations and additions.

**DA22/296 95 Diadem Street, Lismore:** To undertake alterations and additions to the Lismore Square to provide Direct to Boot facilities within the car park (Woolworths), including storage area, lift and associated signage.

**DA22/311 62 Main Street, Clunes:** To undertake: 1) alterations and additions to the existing dwelling, including a new carport that encroaches into the 6m front setback to Main Street; and 2) the erection of a new dwelling to create a detached dual occupancy and associated demolition works, removal of vegetation, inground swimming pool, on-site effluent disposal system and driveway works.

**DA22/314 121 Gungas Road, Nimbin:** To undertake the erection of a new expanded dwelling to create a detached dual occupancy and associated earthworks, on-site effluent disposal system, vegetation removal driveway and strata subdivision (2 lots).

**DA22/323-2 59 City View Drive, East Lismore:** Section 4.55(1A) modification to Development Consent 5.2022.323.1 to include block retaining walls to the front of the residence.

**DA22/343 560 Oakland Road, East Coraki:** Raise existing dwelling with associated alterations and additions including an access lift.

**DA23/6 109 Woodlark Street, Lismore:** To undertake the change of use of part of a shop to a food and drink premise.

**DA23/13 67A McPherson Road, Bexhill:** Re-sited dwelling with associated retaining walls to create a detached dual occupancy.

**DA23/28 62 Avondale Avenue, East Lismore:** Inground swimming pool.

**DA23/53 33 Mountain View Drive, Goonellabah:** Dwelling alteration to remove existing awning and replace with new insulated patio awning

**DA23/58 69 Cathcart Street, Girards Hill:** Dwelling addition (patio awning) to a heritage item in a heritage conservation area.

Details of applications and consents, together with conditions attached, may be inspected at Council's Corporate Centre during business hours or via DA Tracking at [www.lismore.nsw.gov.au](http://www.lismore.nsw.gov.au).

# WHAT'S ON AT YOUR LOCAL LIBRARY

## Aquarius 50th Anniversary

### Mobile Library

Thursday, 18 May from 10.45am to 5pm

The Mobile Library visit to Nimbin will exhibit a range of Aquarius Festival history, including access to the Aquarian Archive. The exhibit features historical documents from the 1973 festival, Amplify Oral History Collection, interviews with residents living in the area at the time and a collection of books and photographs from the Lismore Library's historical collection.

## Writers Masterclass

### Goonellabah Library

Thursday, 4 May from 5pm-6.30pm

A series of masterclasses where students can develop their creative writing techniques across a range of genres.

**Junior Masterclass** – ages 8-12

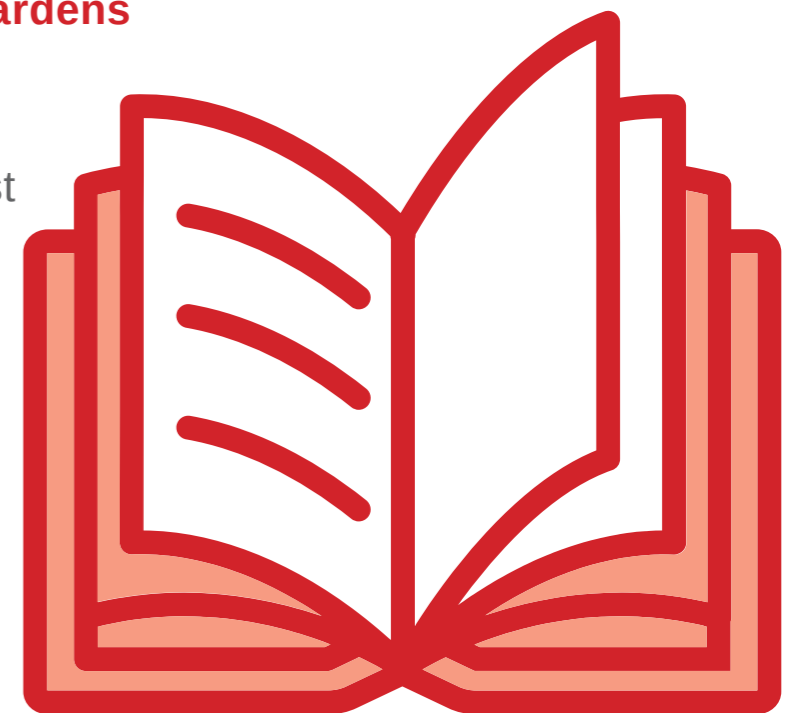
**Youth Masterclass** – ages 13-17

## Storytime among the trees

### Lismore Rainforest Botanic Gardens

Thursday, 11 May at 10.30am

Join our library storyteller and Friends of the Lismore Rainforest Botanic Gardens Inc. for a wonderful story and craft, followed by an exploration of the gardens.







## GEMFEST RETURNS TO THE SHOWGROUND

Gem enthusiasts, rockhounds and mineral collectors, mark your calendars. Australia's largest annual gem and mineral show, Gemfest, returns to the Lismore Showground on 20-21 May.

With more than 140 stalls, Gemfest offers a fantastic opportunity for collectors and hobbyists to explore a diverse range of crystals, gems, mineral specimens, fossils, jewellery and lapidary equipment.

The event features something for everyone, from beginners to professionals, with a range of workshops and demonstrations available for visitors to participate in.

One of the most popular attractions at Gemfest is Fossicking on the Hill, a hands-on experience for kids to discover and unearth their very own gems. The event is perfect for families, providing a fun-filled experience for both young and old.

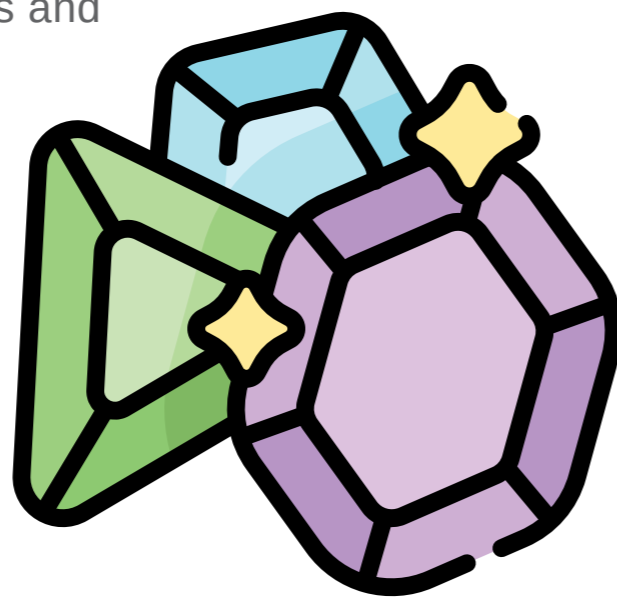
Gemfest will run on Saturday, 20 May from 9am-5pm and on Sunday, 21 May from 9am-3pm. Food and drinks will be available from vendors at the event and an ATM will be located near the food area. Free parking is available at the Lismore Showgrounds via the Dunoon Road entrance.

Admission to Gemfest is \$5 for adults and \$1 for children under 12, with tickets available at the gate.

Lismore City Council is a proud sponsor of this year's Gemfest.

Don't miss this fantastic opportunity to experience the best in Australian gems and minerals. For more information, go to

[www.lismorelapidary.org.au/gemfest](http://www.lismorelapidary.org.au/gemfest)



## FAMILY FRIENDLY LANDCARE4LIFESTYLERS

Boatharbour Landcare, in conjunction with Lismore City Council, is hosting a family friendly outdoor event to educate the community on the importance of preserving and restoring native flora and fauna.



The event, called Landcare4Lifestylers, will be held on Saturday, 20 May from 12pm-4pm.

Landcare4Lifestylers is ideal for those who have recently moved to the area and are interested in improving the land around them.

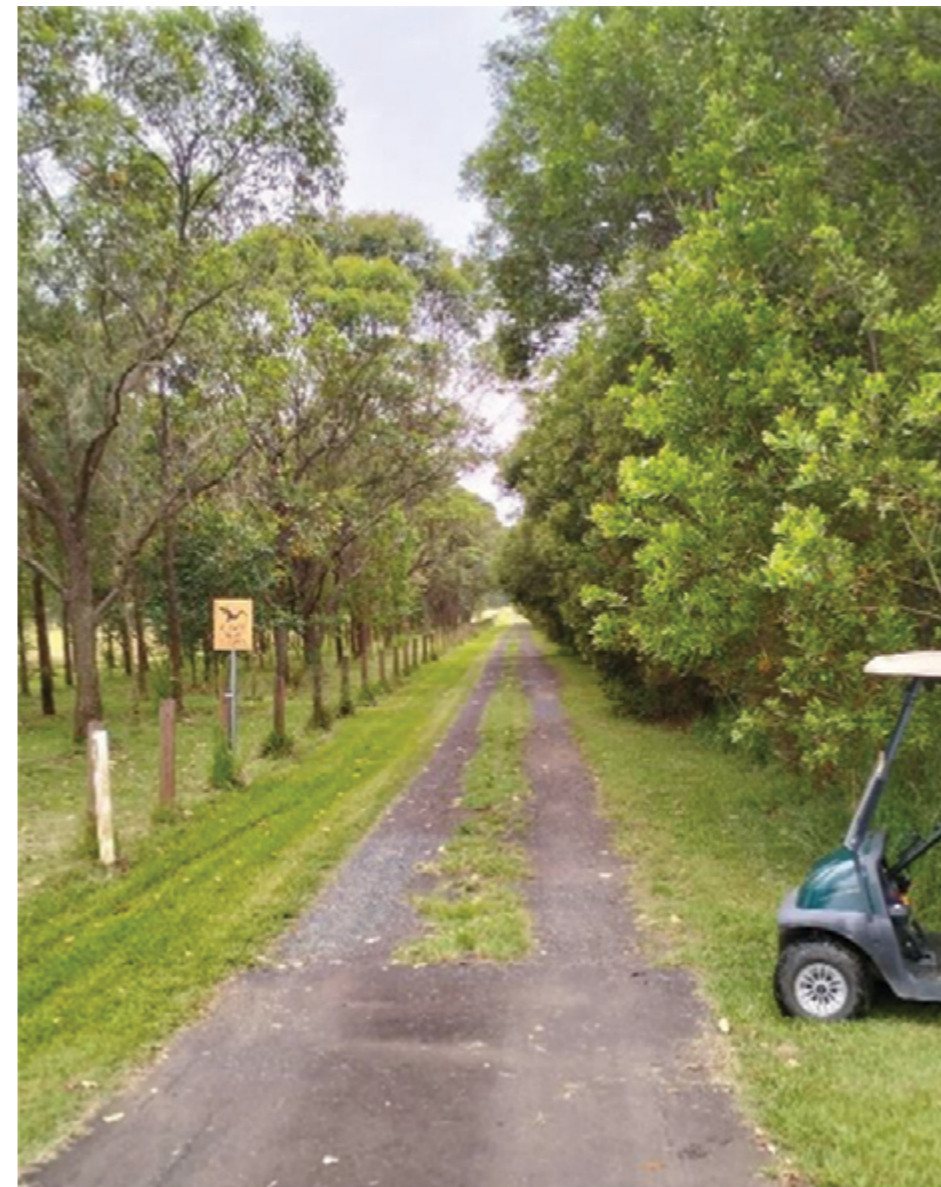
The event will take place in a 12-year-old revegetated forest at Boatharbour, providing attendees with an

opportunity to appreciate the beauty of the area while learning about growing native plants, bird and bug identification, and weed management.

Friends of the Koala, Southern Cross University, Byron Bird Buddies and Ozfish will be on hand to provide expert advice.

The event will include activities for children, a coffee van, and a walk and talk session with a professional bush regenerator.

Landcare4Lifestylers promises to be a fun and informative day out for the whole family.





# NIMBIN WATER SUPPLY UPDATE - IMPROVEMENTS IN WATER QUALITY

**Nimbin residents and businesses can breathe a sigh of relief with the latest update on the village's water supply.**

The quality of water in Nimbin's supply network was significantly impacted by the February 2022 natural disaster. In the months that followed, the village faced water restrictions, boil water alerts and inconsistent water quality.

To ensure the village has clean and safe water, a temporary treatment plant has been set up. The plant has been designed to remove any dirt and organic materials present in the water supply, which can pose a risk to public health if consumed.

The temporary plant will initially filter water supplied to the village, with the aim to connect rural customers within the next six months.

The plant came online in February this year and has significantly enhanced the quality of water for the village. The village has experienced its best quality of water supply since the plant became operational.

Council is confident that this temporary treatment plant will provide a more reliable water supply for Nimbin. The design of a permanent treatment plant is also underway, with construction set to begin in 2024.

**Rural residents are reminded to adhere to the boiled water notice until notified by Council. For further information, residents can contact Council on 6625 0500.**







## CONTACT US: 6625 0500

**Corporate Centre:** 43 Oliver Avenue, Goonellabah

**Hours:** Monday to Friday, 8.30am to 4.30pm

**Post:** PO Box 23A, Lismore, NSW 2480

**Email:** [council@lismore.nsw.gov.au](mailto:council@lismore.nsw.gov.au)

**Web:** [www.lismore.nsw.gov.au](http://www.lismore.nsw.gov.au)



Find us on Facebook and  
YouTube or follow us on Twitter.

