



LOCAL MATTERS

LISMORE CITY
COUNCIL NEWS
ISSUE 238, 7 AUGUST 2023



WWW.LISMORE.NSW.GOV.AU



MAGPIE ALERT! NESTING SEASON IS HERE - BEWARE SWOOPING MAGPIES

We are urging people to be on the lookout for swooping magpies.

Magpies often swoop to protect their young from July to November. A pair of magpies can claim territory for up to 20 years, which is why birds are often seen swooping in the same location year after year.

There are a few things people can do for their own safety and to ensure magpies are not provoked.

Council's Environmental Strategies Coordinator Kate Steel said people can post on www.magpiealert.com if they feel others should be warned about a particularly troublesome magpie.

If you have a troublesome magpie this season, make a request to Council to install a Magpie Alert System by calling **6625 0500**.

It's worth remembering that male magpies only swoop during mating season in spring due to a huge increase in testosterone when they become over-protective dads.

The mating season may be starting earlier than expected due to the warmer winter on the Northern Rivers. The 'magpie season' may continue to late October, generally when the young leave the nest. The best thing to do is avoid areas with swooping magpies and plan an alternative route until the behaviour stops.



Swooping Magpie Safety Tips from Magpiealert.com

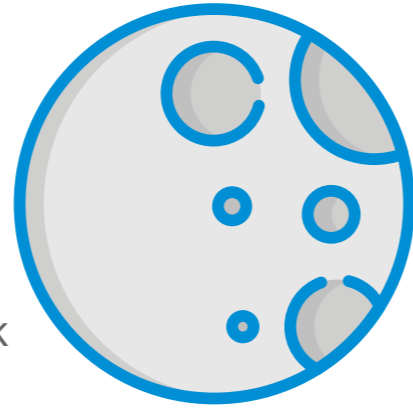
- Keep alert and pay attention to any magpie nesting sites.
- Travel in groups where possible as the birds often target individuals.
- Keep an ear open for their distinctive calls.
- Wear sunglasses and a hat to protect your head and eyes.
- If a magpie swoops while you are cycling, it will probably stop swooping if you get off your bike and walk.
- If you spot a magpie nesting site, stay well clear and even plan alternative routes.
- Remember magpies are urban species too, so there is generally no escaping them.
- If you get swooped, tell others, log the attack and inform Council.
- Do not provoke the magpies, they are very territorial and will protect their nests.
- Try making friends with the magpies by feeding them a balance of nutrients (not just raw mince or bread). Pet stores can advise on the best nutrient mix for birds.
- Wear a wide-brimmed hat or carry an umbrella.
- It is important to stay calm. If you panic and flap our arms, this is likely to appear as aggressive behaviour and provoke a further attack.
- Try to protect your eyes with your hands, those large beaks are very sharp and eye injuries have been previously recorded.
- Magpies seem to have very good memories and have attacked the same people over subsequent seasons and others they just leave alone. If it's attacked you before, it's probably a good idea to use an alternative route next season.
- Face the magpie. They tend to attack from behind so facing them should avert an attack.

CELEBRATE SCIENCE WEEK AT THE QUAD

Dark Science // New Moon

Free art workshops, stargazing, music and markets for National Science Week.

'Dark Science // New Moon' at the Quad will be a day full of workshops, markets, performances, art and activities celebrating National Science Week on Thursday, August 17.



Community Cartography workshop (free) 11–1PM

Join artist Karma Barnes in the Mapping Internal & External Terrains. Community Cartography workshop to explore the intersection of art, mapping and personal experiences through earth pigments.

Ecoliteracy workshop for kids (\$5) 1–2.30pm

With Tiff Bollhorn. For ages 7-12 years.

This workshop, joining science with art, hopes to inspire children to be curious and have an open mind and heart for all that we can become.

Solar Dye Jar workshop (\$5) 2.30–3.30pm

With Norton Fredericks

Connect to Country through the science of natural dyes using botanical bundle dyeing techniques with native plants, food waste and ochre. Participants receive a silk bandana, dyestuff, string and a glass jar.



New moon markets 3–5pm

Visit the Pop-up Library at the Quad to explore the science of sound, light, colour and magnetism.

Join us at the Quad for an all-ages market of free activities.

Welcome to Country at 5.45pm Music with Cloud Beard from 6pm.

Stargazing (free for all ages) 5.30–10pm

Join North Coast Astronomy for stargazing, operating five large telescopes for the community targeting Saturn, bright clusters and nebulae.

Hot fire, OMGDONUTS and hot beverages available.

.....

Bookings are essential for all workshops.

Visit lismorequad.org.au for more information.

'Dark Science // New Moon' is proudly funded by Inspiring Australia as part of National Science Week. This event is delivered in partnership with the Lismore Quadrangle, The Lismore Regional Gallery, The Lismore Library and Lismore City Council.

.....

AUTOMATIC FLOOD WARNING SIGNAGE

The Australian Government has funded the installation of digital advance warning flood signs at three sites in our Local Government Area to improve safety for motorists during future weather events.

The signs have been installed at the three sites below and will be commissioned and tested over the next few weeks.

- Wyrallah Road (Monaltrie Road & Skyline Road)
- Boatharbour Road (Richmond Hill Road & Cameron Road)
- Nimbin Road (Bishops Creek)

The installations include automatic electric warning signs, as well as a separate camera mounted on a high pole at each site where the stream gauge/sensor is located.



The signs require minimal maintenance and operate with a sensor, meaning that when water levels reach a specific depth over the road, the signs are automatically activated to close the road.

The solar powered signs and cameras also automatically connect to Council's Disaster Dashboard and Live Traffic.

The cameras are activated once the creek/stream reaches a pre-determined level and/or the signs are activated.

These automatic advance warning signs don't require Council staff to manually travel out and place "Road Closed" signs. This in turn frees up our staff to focus on other important tasks during the times where roads are flooded, such as closing flood gates, removing fallen trees, moving Council assets to higher ground and generally assisting our community.

Council will be looking for opportunities to provide more of these signs into the future.

This project is funded by the Australian Government.

EXTENSIVE ROAD REPAIRS CONTINUING

Lismore's road network suffered extensive damage from the 2022 natural disaster.

Since then, Council's road crews have worked hard repairing numerous roads to ensure no part of our community is isolated.

One of the biggest jobs are two significant landslips on Nimbin Road, which are crews are currently working on.

At the slip closest to the village, bulk earthworks are now complete and 80 of the 240 piles to secure the road are installed. Concrete works are due to start shortly.

At the other site about 4km out of Nimbin, Council's team is constructing additional flood scour protection, which stops soil from washing away in heavy rain. Once completed the pile installation will start.

Work on both sites started in mid-May and are expected to take nine months to complete, subject to weather, contractor, and material availability.

This will involve piling and retaining wall construction works to allow repair of the landslips, reconstruction of pavement, reinstatement of road and guardrail barriers along with installing signs, guideposts and line marking.

Traffic control lights and the existing single-lane traffic control will remain in place during the works period. Council would like to thank residents for their patience during this time.

You can keep up to date with the progress by going to the Flood Restoration – Roads & Bridges' page on Your Say on Council's website www.lismore.nsw.gov.au

If you want to contact Council directly with any questions or comments, or register your contact details to receive updates, please call (02) 6625 0500 or email floodrecoveryroadsbridges@lismore.nsw.gov.au and include the title 'Nimbin Road Landslips – July Update.'





DEVELOPMENT CONSENTS ISSUED

ENVIRONMENTAL PLANNING AND ASSESSMENT ACT

In accordance with the provisions of Section 4.59 of the Act and Clause 124 of the EP&A Regulation, notification is given that the undermentioned developments have recently been granted consent.

APPLICATION DETAILS

DA22/118 30 Blue Hills Avenue, Goonellabah: To undertake a large lot residential subdivision to create five (5) lots and associated driveway, civil infrastructure works, tree removal and earthworks in the following stages: Stage 1 – the subdivision of Lot 7 DP 255203 to create two (2) lots; and Stage 2 – the subdivision of Lot 1 (Stage 1) to create four (4) large lot residential allotments.

DA22/374 23 Rifle Range Road, 1A Military Road and 16 Industry Drive, East Lismore: To undertake alterations and additions to the 'Friends of the Koala' facility, including: 1) alterations and additions to the administration / education building and the koala hospital building; 2) new storage shed, carport and parking spaces; 3) new walkway from the new accessible parking space to the educational/administration building; and 4) associated stormwater works. The proposal is classified as nominated integrated development and integrated development in accordance with s4.46 of the Environmental Planning and Assessment Act 1979. Approval from NSW Natural Resource Access Regulator is required in accordance with Water Management Act 2000. The consent authority is the Lismore City Council.

DA23/46 15 Industry Drive, East Lismore: To undertake the change of use an existing depot to a community facility for use by the Lismore Men's and Community Shed, and the associated construction of 1) a dust collector and compressor room; 2) a new metal working shed; and 3) a new concrete slab.

DA23/50 43, 49 and 53 Krauss Avenue, Loftville: To undertake bulk earthworks (filling of land) to extend the approved filled pad to the western boundary and to increased height of filled pad (12.4m AHD).

DA23/68 16 Spurfield Road, McLeans Ridges: Shed.

DA23/74 4 John O'Neill Circuit, Goonellabah: Rock retaining walls.

DA23/84 85 Donnans Road, Lismore Heights: Carport with a building line variation to 4m to Donnans Road.

DA23/86 380 Whian Whian Road, Whian Whian: Use of existing building as a dwelling and construction of expanded dwelling outbuilding.

DA23/109 23 Felicity Drive, East Lismore: Dwelling additions and alterations (new covered outdoor area, and new pool hut with associated decking).

DA23/128 43 Lincoln Avenue, McLeans Ridges: Shed.

DA23/137 146 Invercauld Road, Goonellabah: Dwelling alterations and additions to enclose under existing veranda to create a storage area, remove existing shed and rock/timber retaining wall, construct new retaining wall and shed.

DA23/143 4 Mitch Place, Chilcotts Grass: Shed with amenities.

DA23/145 60 Mahogany Parade, Goonellabah: Dwelling and retaining walls.

Details of applications and consents, together with conditions attached, may

be inspected at Council's Corporate Centre during business hours or via DA Tracking at www.lismore.nsw.gov.au.

DEVELOPMENT PROPOSALS

ENVIRONMENTAL PLANNING AND ASSESSMENT ACT

As the consent authority, Council has received the following development applications for consideration.

DA NUMBER: 23/142

LOCATION AND DP LOT: 556 Corndale Road, Corndale (Lot 1 DP 332976).

APPLICANT: The Corndale Hall Incorporated.

PROPOSED DEVELOPMENT: To undertake: 1) the erection of a new community hall (Corndale) and associated access driveway, parking spaces, loading area and earthworks; and 2) the refurbishment of the existing toilet block.

The proposal is classified as nominated integrated development and integrated development in accordance with s4.46 of the Environmental Planning and Assessment Act 1979. Approval from NSW Department of Planning and Environment (Water) is required in accordance with Water Management Act 2000.

The consent authority is the Lismore City Council.

CLOSING DATE: 4 September 2023.

DA NUMBER: 23/146

LOCATION AND DP LOT: 24 Colleen Place, East Lismore (Lot 50 DP 748966).

APPLICANT: Newton Denny Chapelle.

PROPOSED DEVELOPMENT: To undertake the erection of a new pre-school (50 Children), including: 1) the construction of a new two-storey building; 2) the provision of fifteen (15) undercroft car parking spaces; 3) the removal of three (3) trees; and 4) associated earthworks, infrastructure / civil works, signage and landscaping works.

The proposal is classified as nominated integrated development and integrated development in accordance with s4.46 of the Environmental Planning and Assessment Act 1979. Approval from NSW Department of Planning and Environment (Water) is required in accordance with Water Management Act 2000.

The consent authority is the Lismore City Council

CLOSING DATE: 4 September 2023.

If you wish, you may make a submission to the Council in relation to the Development Application. Any submission must specify the grounds of objection (if any).

The above Development Application(s) and accompanying documents may be inspected at Council's Corporate Centre, 43 Oliver Avenue, Goonellabah, during ordinary office hours or via DA Tracking at www.lismore.nsw.gov.au.

Further information relating to written submissions is available on Council's website. There are laws regarding the mandatory disclosure of political donations in relation to planning matters. Political donations disclosure reporting forms are available from the Department of Planning at www.planning.nsw.gov.au.



KNOW THE RULES ABOUT BIKES/SCOOTER ON FOOTPATHS

As Lismore continues to recover from the February 2022 natural disaster and more people are visiting our CBD, now is a good time to remind ourselves about the rules for riding bicycles, mobility scooters and recreational devices on footpaths.

There are varying rules for the different use types ranging from bicycle riders, mobility scooters, motorised wheelchairs, E-Scooters, foot scooters, rollerblades, unicycles and skateboards in public spaces.

For example, the Lismore CBD block (the area bounded by Woodlark, Keen, Magellan and Molesworth streets) is a **'NO SKATEBOARD, FOOT SCOOTER & ROLLERBLADE ZONE'**.

All users must walk their devices through the signposted areas.

To help familiarise yourself with the rules and guidelines, Council has produced handy plain English guides for the different use types to help keep pedestrians and fellow road users safe.

To review the rules and guides, visit the Lismore City Council website at www.lismore.nsw.gov.au/Council/Roads-parking/Road-rules or scan the following QR code.



YOUR LOCAL LIBRARY

Australasian Native Orchid Society - Orchid Show

24 and 25 August: 9am-5pm and 26 August: 9am-12pm

**Richmond Tweed Regional Library Support Services,
6 Centenary Drive Goonellabah**

Spring is coming! Come along and see our beautiful native orchids at the Australasian Native Orchid Society Show.

The show is at the Family History and Research Centre, opening on Thursday, 24 August. So many colours, so much variety on display with experts giving orchid-growing advice and lots of plants available for sale.

This could be your opportunity to begin your collection of native orchids. The awards presentation will be at noon Saturday, 26 August.

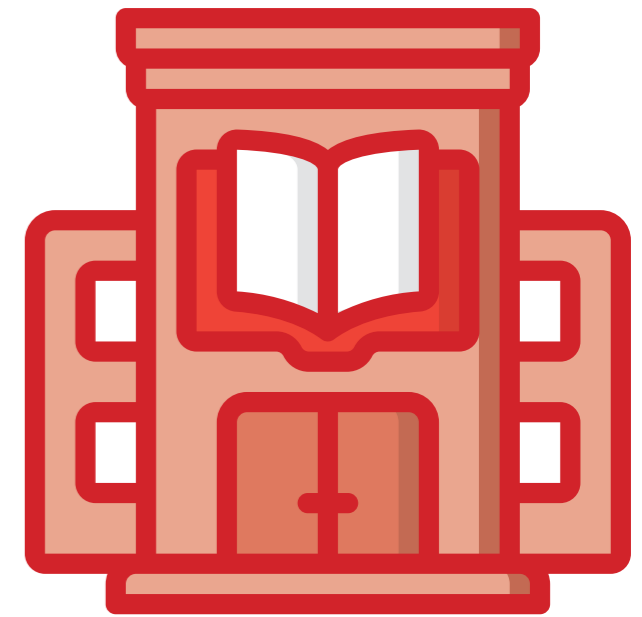
Through the Heart... a Flood of Fears and Tears with Jacklyn Wagner

Saturday, 19 August: 10am – 11am at Lismore Pop-up Library

Join award-winning photojournalist Jacklyn Wagner, in conversation with local journalist Kate Coxall, to hear about her book of portraits, titled *Through the heart... a flood of fears and tears*.

Described as 'a love letter to Lismore and its resilient spirit', the portrait series shows locals in their homes soon after the February 2022 natural disaster.

These photographs were exhibited in NSW Parliament and have now returned to Lismore. Phone Lismore Pop-up Library to book your place on 02 6621 2464.



UPDATE ON THE BATTLE AGAINST CECROPIA ON THE FAR NORTH COAST

A good news story! The Rous County Council Weed Biosecurity team have been working tirelessly over the last several years to eradicate the Cecropia weed tree (Cecropia spp.) from the Northern Rivers, before it caused irreversible damage to our delicate local ecosystems.

This has been a program of diligent identification, mapping and control works of more than one hundred specimens. We are pleased to announce our team at Rous are currently tackling the few remaining trees now, meaning we have reached our goal of no known established Cecropia left on the Far North Coast. What a win!

Cecropia, also known as Mexican Bean Tree, is a fast-growing ornamental tree native to tropical Central America and the West Indies, with the potential to invade our local rainforests and riparian areas.

Cecropia thrives in wetter habitats and will form dense colonies in forest gaps and margins, roadsides and gullies. Each tree produces up to 20,000 seed per year which can be spread by fruit bats, birds, flowing water and the movement of soil. Once established, these monocultures would be devastating to native species of flora and fauna.

Cecropia is a regional priority eradication weed under the NSW Biosecurity Act 2015.

For further information go to WeedWise

www.weeds.dpi.nsw.gov.au/Weeds/Cecropia or to report suspected sightings head to www.rous.nsw.gov.au/report-a-weed



ASSISTANCE STILL AVAILABLE AT RECOVERY CENTRE

Lismore City Council is pleased to advise that the Recovery Centre will remain open for our community throughout August and September.

Located at the Lismore Transit Centre, the centre has been supporting flood-affected residents and businesses to access a range of supports and services since the February 2022 natural disaster.

Effective immediately, the days of operation are Tuesday, Wednesday and Friday, with the following services available:

Tuesday

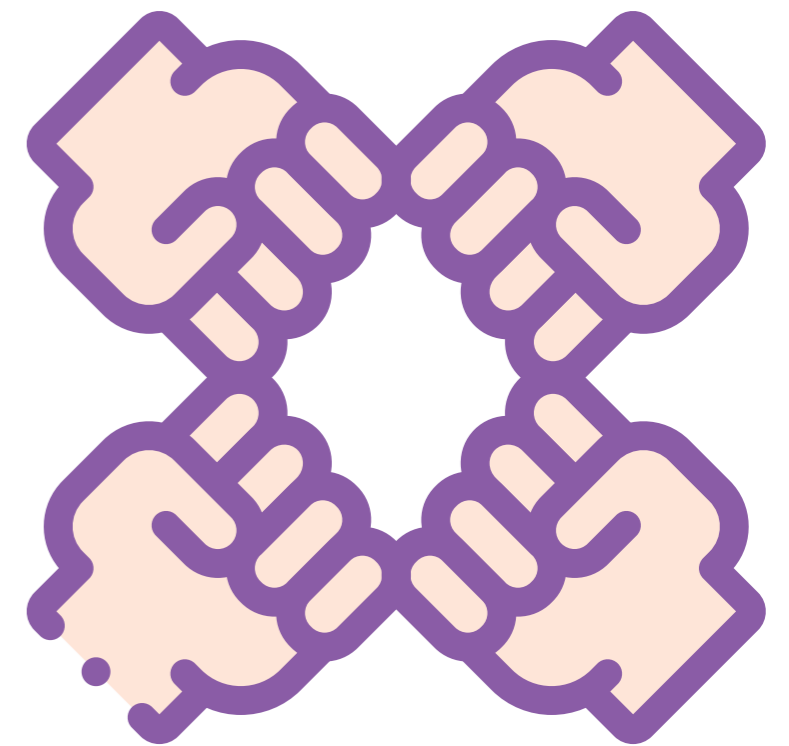
- Lismore City Council
- Service NSW
- Uniting RSS
- Camplify Caravan bookings
- Johns Lyng Group (Property Assessments)
- GIVIT requests

Wednesday

- Lismore City Council
- Service NSW
- NR Community Legal Centre
- GIVIT requests

Friday

- Lismore City Council
- Service NSW
- GIVIT requests



For more information on the Recovery Centre, phone Council on 6625 0500



CONTACT US: 6625 0500

Corporate Centre: 43 Oliver Avenue, Goonellabah

Hours: Monday to Friday, 8.30am to 4.30pm

Post: PO Box 23A, Lismore, NSW 2480

Email: council@lismore.nsw.gov.au

Web: www.lismore.nsw.gov.au



Find us on Facebook and
YouTube or follow us on Twitter.

