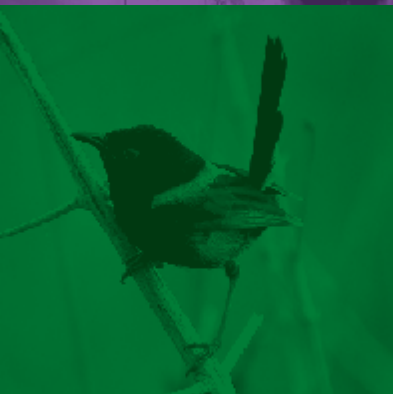




# LOCAL MATTERS

LISMORE CITY  
COUNCIL NEWS  
ISSUE 251, 19 FEBRUARY 2024



[WWW.LISMORE.NSW.GOV.AU](http://WWW.LISMORE.NSW.GOV.AU)





Help us envision the future of Nimbin

## HAVE YOUR SAY ON A PLACE PLAN

Lismore City Council is embarking on a multifaceted engagement with the Nimbin community to develop a 'Place Plan' that will identify a collective long-term vision for the village.

By collaborating with residents, businesses and community organisations, we want to identify what gives Nimbin its unique local character and the ways the community can shape, enhance and protect the things they love. The Nimbin Place Plan will guide decision making and prioritise projects with a focus on improving the amenity and facilities of the village and identifying new economic opportunities. The project will not be looking at water security issues or any future growth for the village.

**If you have ideas (big or small) for things that will create a sustainable and prosperous future and enhance Nimbin's public spaces, then this is your chance to put them forward.**

## The ways to get involved include:

**Online survey:** Running from 13 February to 17 March, the survey aims to capture an understanding of existing strengths and opportunities, and to gather ideas for specific sites and activities people would like to see.

**Workshop 1 (early visioning):** Identifying the community's identity, values and aspirations for the future to establish a shared vision and series of guiding principles. To be held at Nimbin Town Hall, Monday, 4 March: 5.30-7.30pm. Finger food provided.

**Workshop 2 (action-plan formulation):** Identifying projects for 'quick wins', medium and long-term development. To be held at Nimbin Town Hall Wednesday, 5 March: 7-8.45am. Catering provided.

You can access the survey and register for the workshops via Council's Your Say webpage. Separate, targeted engagement with First Nations people and school students will also be undertaken.

A draft version of the Place Plan will be presented back to the community in late May/early June to test the recommendations before finalisation. It will include a spatial masterplan and an associated action plan that everyone can get involved in delivering.



# NIMBIN RAINBOW ROAD WALKING TRACK

After more than 20 years of lobbying and planning, construction of the much-anticipated Nimbin Rainbow Road Walking Track is set to begin next month and completed in July, weather permitting.

The track is a community-led project to construct a 750m-long concrete and boardwalk pathway for locals and visitors.

It includes pathways, lighting, interpretive signage, way-finding signage, artwork, small bridges erected over the nearby creek system, park furniture and native plantings.



Council staff have recently been negotiating various land approvals, with one access from Cullen Street unfortunately being postponed due to Public Liability constraints.

However, there is a silver lining. Funding for the Cullen Street entry has been diverted to create an additional entry from the Nimbin Caravan Park driveway, giving access to and from the pool, caravan park and the remainder of Peace Park.

Two wheelchair accessible carparks are also planned at this location.

Local artists are currently creating six artworks that promises to be a wonderful feature of the walking track.

Once the track has been constructed, about 6000 plants will be planted throughout the entire site. A limited number of selected trees will be removed to allow for the construction, which will be milled and repurposed at a later date.

The \$2.5 million project is fully funded under the Bushfire Local Economic Recovery Package, which is co-funded by the Australian and NSW governments.

# TRAFFIC CONTROL DURING SAMSON CHALLENGE

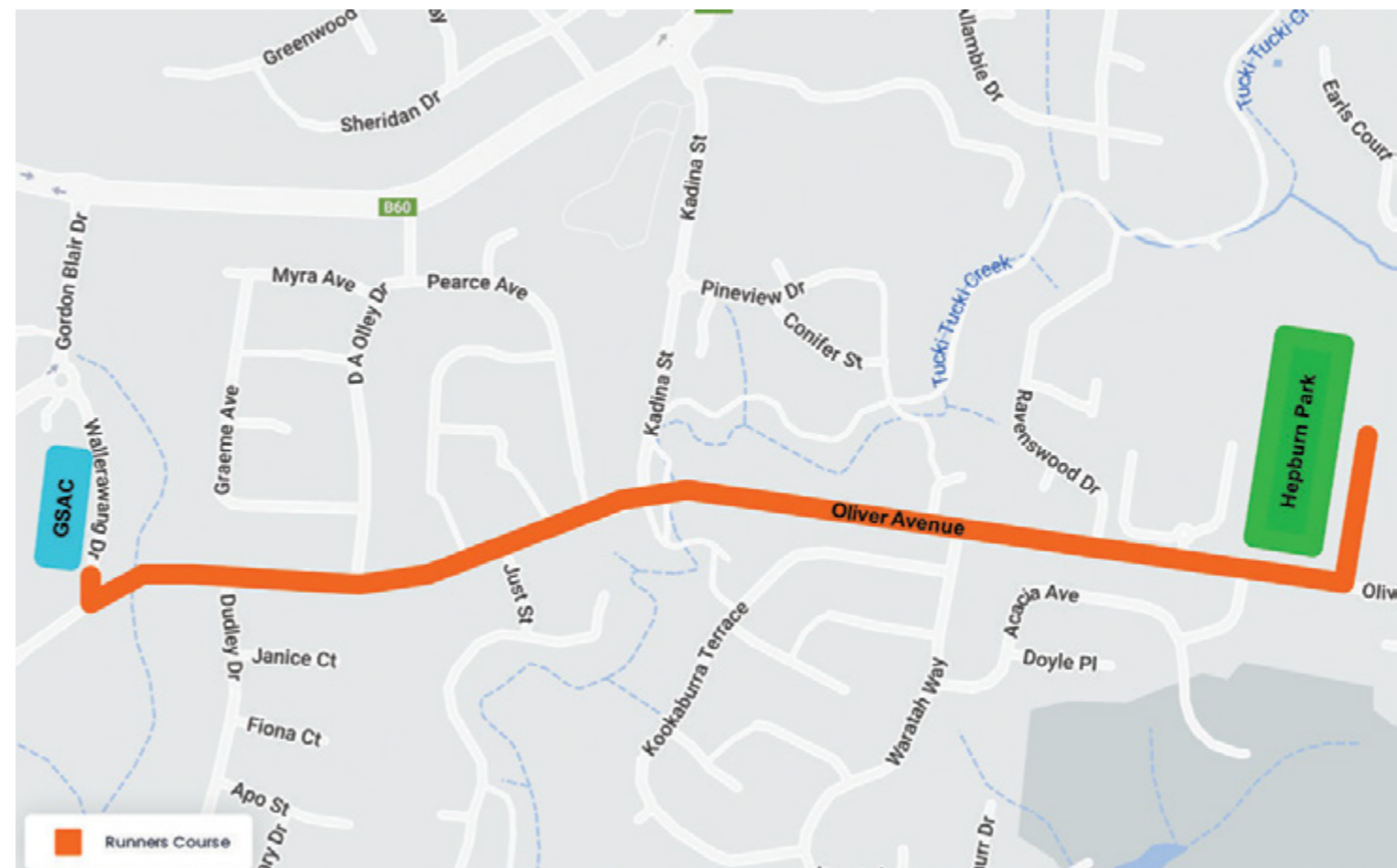
The popular annual Samson Challenge returns to push competitors through a gruelling, yet fun and challenging obstacle course from Friday, 1 to Saturday, 2 March.

To support the participants, Traffic Controllers will be positioned between Hepburn Park and Goonellabah Sports & Aquatic Centre (GSAC) to ensure their safety.

This event is a significant fundraiser for Our Kids, a charity dedicated to purchasing paediatric equipment for the Children's Ward and Special Care Nursery at Lismore Base Hospital.

There are 11 categories in 2024 ranging from male open, female open, mixed, masters (over 40), Platinum (over 50), and juniors and teenagers. There is also a solo option with limited spots available.

Registrations for the event close on Tuesday, 20 February. Head over to [www.lismoresamson.com/registration.html](http://www.lismoresamson.com/registration.html) to register.



# A FUTURE FULL OF FUN AWAITS AT HERITAGE PARK

The family-friendly Heritage Park is set to receive another addition, with Council due to start work in April on a new awe-inspiring adventure tower called the Giga Dome.

The new addition, designed for kids aged 7 to 13-years, will sit at the park's northern end, creating a magical playground that is visually stunning and thrilling to explore.

**The Giga Dome is a large sphere where kids can play with climbing and balancing interactive activities that promote physical development through strength building and coordination.**

Ground-level activities and dynamic nets facilitate active social interactions, creating a vibrant space for children to explore and form friendships.

It will feature vibrant colours and a rainforest theme, harmonising beautifully with the natural beauty of Heritage Park.

Funding for the project is thanks to the Stronger Country Communities Fund Program (Round 5), with work anticipated to begin in April and completion expected in July this year.

The Giga Dome installation continues a multitude of upgrades at Heritage Park, which have seen the recent completion of the new pathway connecting other upgrades to the park, such as the water play, adventure and toddler equipment, as well as the ever-popular Heritage Train Railway.

To stay updated with the Heritage Park upgrade, visit our Yoursay page at <https://yoursay.lismore.nsw.gov.au/heritage-park>.



# CHANGES TO YOUR GREEN ORGANICS BIN

The NSW Environmental Protection Authority has advised that no packaging is suitable for the green-lid organics bins. Only food scraps, garden waste and approved kitchen caddy liners will continue to be accepted.

## Why?

Research has shown that compostable products provide almost no nutrient value to compost.

Some food packaging items that are water and grease resistant can contain harmful 'forever' chemicals, such as polyfluroalkyl substances (PFAS).

Keeping those potentially harmful items out of our green bins means that we can create high-quality commercial compost to support food production and soil health.

Over 2024, Council and its neighbours in the Northern Rivers region that have been providing the organics bin service for many years to residents and businesses will be running a campaign to help people make this transition and updating all our guides and other resources.



### What CAN go in your green organics bin

#### Food



Fruit & vegetable scraps, meat & bones, seafood & shells, pasta, bread & rice, eggs, dairy products, loose tea leaves and coffee grinds

#### Garden waste



Leaves, branches, grass clippings, old flowers and weeds



Agricultural manure

#### Compostable plastic kitchen caddy liners



that comply with Australian Standard AS 4736-2006 (for commercial composting)

#### Fibre-based kitchen caddy liners



e.g. paper or newspaper

### What CANNOT go in your green organics bin

#### Fibre-based products



Bamboo, cardboard, timber packaging and cutlery, paper towels and serviettes

#### Compostable or biodegradable products



excluding AS 4736-2006 kitchen caddy liners



Pet poo and poo bag



Vacuum cleaner dust



Washing machine and dryer lint



Ash from fire/BBQ





# DEVELOPMENT CONSENTS ISSUED

## ENVIRONMENTAL PLANNING AND ASSESSMENT ACT

**In accordance with the provisions of Section 4.59 of the Act and Clause 124 of the EP&A Regulation, notification is given that the undermentioned developments have recently been granted consent.**

### APPLICATION DETAILS

**DA20/529-3 464 Broadwater Road, Dungarubba:** Section 4.55(1A) application to modify development consent notice 5.2020.529.2 to reduce the size, shape and location of the approved shed and seek consent for 'as built' earthworks undertaken at the site.

**DA21/266-3 27 Spurfield Road, McLeans Ridges:** Section 4.55(1A) application to undertake the following modifications to development Consent 5.2021.266 (Dual Occupancy): 1) primary dwelling: extend pool deck (part of roof extended beyond the previous 80m limit), and amend pool edge/deck (infinity edge omitted); 2) Secondary dwelling: move dwelling 25metres further away from primary dwelling, add a new wrap around veranda and carport, and delete the pool.

**DA21/555-2 2/12 Lucia Crescent, Howards Grass:** Section 4.55(2) modification to the construction of a dwelling house with an attached garage, secondary dwelling and associated works.

**DA23/015-2 96D Yeager Road, Leycester:** Section 4.55(1) modification to amend a number of conditions to rectify an administrative error and provide flexibility in the provision of services.

**DA23/110-2 22 Evergreen Drive, Goonellabah:** Section 4.55(1) modification to correct version of stamped plan set.

**DA23/112-2 26 Evergreen Drive, Goonellabah:** Section 4.55(1) modification to correct version of stamped plan set.

**DA23/113-2 36 Evergreen Drive, Goonellabah:** Section 4.55(1) modification to correct version of stamped plan set.

**DA23/156-2 25 Newbridge Street, South Lismore:** Section 4.55(1) application to modify consent to change the internal location and orientation of the mezzanine floors.

**DA23/180 34 Caldwell Avenue, East Lismore:** Alterations and additions to dwelling.

**DA23/193 8 Blue Wren Place, Goonellabah:** To undertake a strata subdivision to create one additional lot and associated driveway extension, extension of services and new retaining wall.

**DA23/243 839 Blue Knob Road, Blue Knob:** Demolish existing dwelling, construct new dwelling and swimming pool.

**DA23/244 63 Acacia Avenue, Goonellabah:** To undertake the erection of a detached dual occupancy and associated earthworks, driveways, landscaping and strata subdivision (to create 2 lots).

**DA23/288 1205 & 1207 Jiggi Road, Jiggi:** To undertake a subdivision boundary alteration.

**DA23/306 186 Magellan Street, Lismore:** Demolish Community Hall (Flood Damaged).

**DA23/309 5A Funnell Drive, Modanville:** Re-sited dwelling and construction of new entry stairs and garage with attached carport.

**Details of applications and consents, together with conditions attached, may be inspected at Council's Corporate Centre during business hours or via DA Tracking at [www.lismore.nsw.gov.au](http://www.lismore.nsw.gov.au).**

# DEVELOPMENT PROPOSALS

## ENVIRONMENTAL PLANNING AND ASSESSMENT ACT

**As the consent authority, Council has received the following development applications for consideration.**

**DA NUMBER:** 23/337

**LOCATION AND DP LOT:** 417 Rosehill Road, Blakebrook (Lot 2 DP 859866).

**APPLICANT:** ADCO Constructions Pty Ltd.

**PROPOSED DEVELOPMENT:** To undertake the construction of a new elevated school building, with at-grade (undercroft) amenities and storage, new hard and soft landscaping, new hydrant pump house and relocation and replacement of existing septic tanks and water tanks. The application is regionally significant crown development with the Northern Regional Planning Panel as the consent authority.

**CLOSING DATE:** 18 March 2024.

**If you wish, you may make a submission to the Council in relation to the Development Application. Any submission must specify the grounds of objection (if any).**

**The above Development Application(s) and accompanying documents may be inspected at Council's Corporate Centre, 43 Oliver Avenue, Goonellabah, during ordinary office hours or via DA Tracking at [www.lismore.nsw.gov.au](http://www.lismore.nsw.gov.au).**

**Further information relating to written submissions is available on Council's website. There are laws regarding the mandatory disclosure of political donations in relation to planning matters. Political donations disclosure reporting forms are available from the Department of Planning at [www.planning.nsw.gov.au](http://www.planning.nsw.gov.au).**

# COUNCIL DECIDES

Council's Ordinary February meeting was adjourned until Tuesday, 20 February after Councillors ran out of time to deal to all the items on the business paper.

The following are some of the decisions made before the meeting was adjourned on Tuesday, 13 February 2024.

## Councillors resolved to:

- **REQUEST** (1) that Transport for NSW urgently remove the railway bridge in Terania Street North Lismore, (2) requests permission to urgently remove the bridge if Transport for NSW refuse to do so, subject to a funding source being identified and (3) seek legal advice regarding the fastest way to remove the bridge if Transport for NSW refuse to do so, refuse to give council permission to do so, and a response to points 1 and 2 has not been received within 7 days.
- **RENAME** the Lismore Vision and Blueprint to Reimagine Lismore, establish a Reimagine Lismore Advisory Panel, prepare Terms of Reference to guide the Reimagine Lismore Advisory Panel, for consideration and endorsement by resolution of Council on or before the April Ordinary Council meeting, hold a workshop to review the

Reimagine Lismore community engagement program, for endorsement by the resolution of Council, on or before March Ordinary Council meeting, continue with any scheduled community engagement options until the Reimagine Lismore community engagement program is endorsed, schedule monthly public briefings to be updated and discuss the progress of Reimagine Lismore.

- **NAME** the new building at Oakes Oval/Crozier Field the "Adam Gilchrist AM Pavilion" (photo), name the Lismore Regional Airport terminal the "James Strong AO Terminal", name the Gordon Pavilion grandstand the "John McMahon OAM Grandstand," name an Oakes Oval grandstand the "Lyn Larsen AM Grandstand", erect appropriate signage at the above venues as funding permits, and investigate internal and external funding opportunities to construct a Walk of Honour, in the vicinity of Uralba Street between Dawson and Brewster streets, of well-known Australians associated with the Lismore local government area.



The full list of decisions will be published on Council's website following the conclusion of the Tuesday, 20 February meeting.

## WHAT'S ON AT YOUR LOCAL LIBRARY

### Dr Seuss's Birthday Party

Saturday, 2 March: 10am-1pm at Lismore Children's Library

Come and join the celebrations. We will be making Seuss craft, reading a book or two, having a dress-up parade and eating cake. Dress up as your favourite Seuss character to join the parade!

### Tech Savvy Seniors: Researching Family History

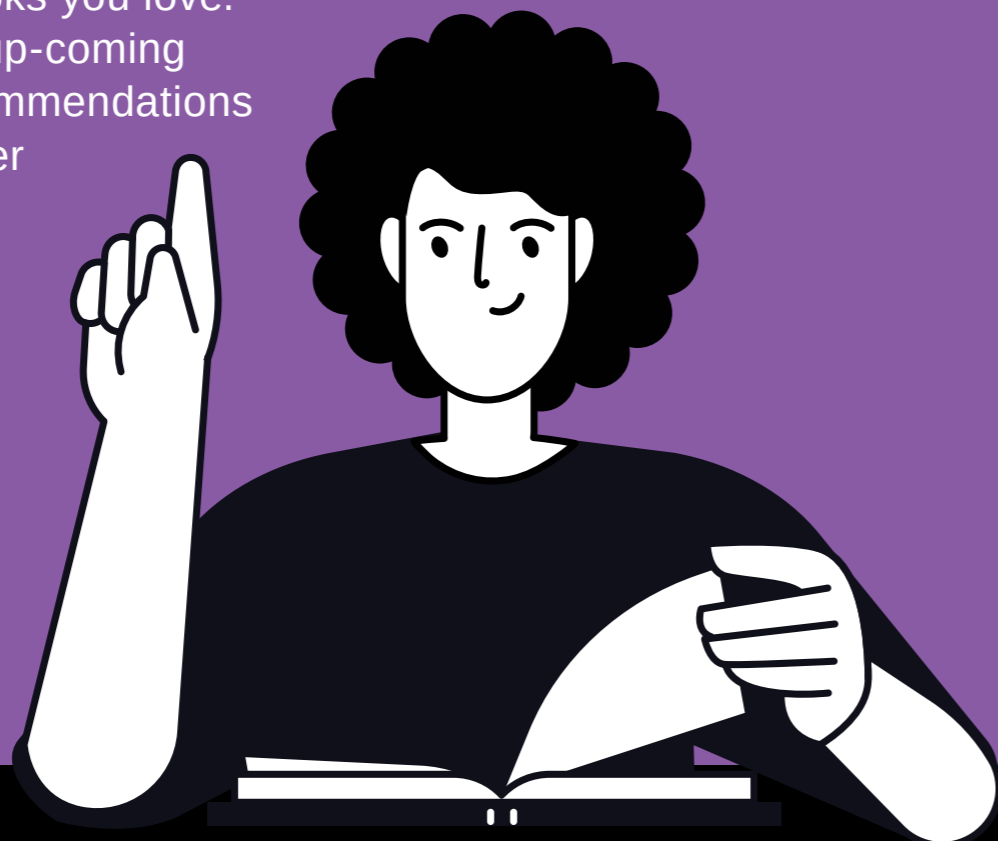
Monday, 26 February: 3pm-4pm at Lismore Pop-up Library

In this course, you'll learn how the library can be used to help you research your family history. You'll explore the kinds of tools and services that are available and some of the costs you might encounter.

### Book Chat

Monday, 26 February: 10am-11.30am at Goonellabah Library

Do you enjoy talking about books and reading? Join our monthly book chat to talk about the books you love. Find out about new and up-coming titles, share reading recommendations and meet new friends over a cuppa in the library.



## BLAZE AID: URGING FARMERS TO SEEK AID IN FENCE REPAIRS

Since returning to Lismore in October 2023, BlazeAid has repaired fences and structures on 46 properties affected by the 2022 flooding natural disaster.

With BlazeAid's lease at the Greyhound track ending in March, Coordinator Gary Lawrence urges farmers still in need of assistance to register with the group before to make the most of the support.

"We're equipped and ready to help," he said.

"We have restored over 22kms of fencing, plus cleared approximately 11km of land to help farmers get back on their feet.

"We help restore stock containment, boundary fencing and much more."

Mayor Steve Krieg said the volunteers at BlazeAid had done an incredible job helping farmers recover.

"With much of the media focus on the CBD and residences after the disaster, BlazeAid assisted our farmers, and we are immensely grateful," he said.

"They have done a great job since they set up their base in Lismore and I encourage any landholder who still needs their help to contact Gary Lawrence or drop into their base camp at the Greyhound track."

To register your property or volunteer at BlazeAid, contact Gary Lawrence on 0427 390 851.







# CONTACT US: 6625 0500

**Corporate Centre:** 43 Oliver Avenue, Goonellabah

**Hours:** Monday to Friday, 8.30am to 4.30pm

**Post:** PO Box 23A, Lismore, NSW 2480

**Email:** [council@lismore.nsw.gov.au](mailto:council@lismore.nsw.gov.au)

**Web:** [www.lismore.nsw.gov.au](http://www.lismore.nsw.gov.au)



Find us on Facebook, Instagram  
and YouTube.

