

# LOCAL MATTERS

LISMORE CITY  
COUNCIL NEWS  
ISSUE 274, 3 FEBRUARY 2025



[WWW.LISMORE.NSW.GOV.AU](http://WWW.LISMORE.NSW.GOV.AU)







# RECOGNISING OUR UNSUNG HEROES

**Neville Graham has been named Lismore City Council's 2025 Citizen of the Year at this year's Australia Day Awards held at Southern Cross University.**

Neville (pictured on cover) was named Citizen of the Year for his tireless dedication to emergency services and community groups over four decades. He has served with the SES, Army Reserves, Police Rescue and numerous local organisations, earning recognition for his selflessness and expertise.

**Lismore Mayor Steve Krieg commended Neville. "He embodies the very best of Lismore's spirit."**

**Other award recipients included:**

**Services in the Community (Individual):** Tracy Ward – Recognised for her innovative community programs, including initiatives to connect generations, support local businesses, and promote kindness and creativity.

**Services in the Community (Group):** Lismore CWA – Honoured for 100 years of service, including significant fundraising for flood-affected residents and ongoing community support.

**Volunteer of the Year:** Len Ward – Celebrated for over six decades of dedication to Lismore Basketball and various community initiatives.

**Junior Female Sportsperson:** Caitlyn Halliday – A talented hockey player who has represented Queensland nationally and internationally.

**Junior Male Sportsperson:** Alex Sipple – Powerlifting gold medalist and world-record holder in his age and weight category.

**Sports Team or Group:** Lismore Rowing Club – Recognised for resilience post-disaster floods and contributions to the local rowing community.

**Arts and Culture:** Victoria Collingnon – Celebrated for fostering creativity and social connection through her work at The Artisans Table. Congratulations to all winners and nominees for their inspiring contributions to our community.

The event also featured a Citizenship Ceremony, with 16 new citizens from 12 countries officially welcomed into the Lismore community.

Thank you to all winners, nominees and attendees for making the event successful.







BENNETT  
**LEGENDS  
OF  
CRICKET**

## Twenty20 Cricket Match

Get ready for an unforgettable day of cricket action as some of Australia's cricketing greats return to **Oakes Oval on Saturday, 15 February 2025.**

Lismore Mayor Steve Krieg will once again lead the Mayor's XI as they take on local cricket legend **Adam Gilchrist's** Gilly's XI. Steve O'Keefe, Michael Kasprowicz, Jason Gillespie, Dan Christian, Nathan Hauritz, Jimmy Maher, Andy Bichel, Sammy-Jo Johnson, Stuart Clark, Doug Bollinger, Georgie Redmayne and Powderfinger's Bernard Fanning will also take to the field.

**Gates open at 1pm, with the action kicking off at 3pm.**

For tickets visit  
**[visitlismore.com.au](http://visitlismore.com.au)**

Supported by



## LEGENDS OF CRICKET SPORTSPERSONS BREAKFAST

Are you a cricket tragic? If so, why not join Lismore's own Adam Gilchrist for a fireside chat with Australian legend Trevor Chappell at the Legends of Cricket Sportspersons Breakfast presented by Alder Constructions and supported by the Commonwealth Bank and 100.9 Triple Z FM.

Enjoy a fully catered breakfast by The Secret Chef, while mingling with cricketing legends and being entertained by Lonnie Pasco at the new Adam Gilchrist Pavilion at Oakes Oval Saturday, 15 February at 8.30am.

Don't miss this fantastic opportunity to enjoy great food, coffee and lively insightful conversation by two of the country's cricketing greats, all in celebration of the spirit of sport.

Tickets are limited, so grab yours today by going to **[www.visitlismore.com.au](http://www.visitlismore.com.au)**



# NIMBIN PUBLIC TOILETS UNDERWAY

Thanks to the Department of Regional NSW funding, Lismore City Council has commenced work on the \$400,000 public toilet block at Peace Park in Nimbin.

This much-anticipated facility has been designed to meet the needs of a diverse range of users. The new toilet block will feature:

- An accessible toilet/change room with shower and single toilet cubicle to service the skate park, playground, Nimbin Rainbow Walking Track and surrounding areas.
- An accessible toilet/change room with shower to service Nimbin Pool users.

The facility is built with resilience and practicality in mind, ensuring it can be easily cleaned and maintained, even after potential flooding or damage.

Site fencing is set up to ensure the public can still access and safely use Nimbin Pool during construction, which is expected to be finalised in March.

The existing shade sail in the construction area will be relocated to the other end of the pool to provide further shade for users.

Adjoining footpaths, access to drinking water and mural artworks are being considered and will be determined as construction is finalised.



This project is part of Lismore City Council's broader effort to maintain and improve public amenities, with 23 public toilet upgrades underway or planned across the LGA. This will ensure access to clean and comfortable public amenities at local parks and rest stops for our residents and visitors alike.

*Picture: Mayor Steve Krieg, State Member for Lismore Janelle Saffin and Friends of Nimbin Pool volunteer Sue Edmonds.*



# NEW LOOK LISMORE LIBRARY OPENS ITS DOORS

Following extensive work to reimagine, redesign and restore, the historic Lismore City Library has quietly reopened in the heart of Lismore while some restoration works continue ahead of next month's official opening.

Three years after the devastating events of 2022, best practice flood restoration techniques and community informed spaces are showcased in a transformational upgrade to the beloved community hub.

The updated building blends thoughtful design with innovative flood-resilient features to create a space for learning, connection, and creativity. The design incorporates flood-resilient 'hose-out' (instead of 'throw-out') elements, including nonporous epoxy flooring, elevated electrical systems, and mobile aluminium shelving, each chosen to ensure the Library's longevity in the face of future weather challenges.

A community-led approach underpinned the reimagined internal design of the new Lismore City Library, which caters to all tastes and ages. It includes dedicated spaces for children, youth, and adults and one of the largest Indigenous and family history collections in regional Australia.

The children's area features a striking hardwood tree and colourful cushions, creating a magical and inviting space for young readers. Teens can look forward to a modern youth area with study booths, charging stations, and relaxed seating options. The new additional small meeting rooms, offer more collaboration and community engagement opportunities.

The \$5.6 million flood-resilient restoration of the Lismore City Library was funded by significant investments, including:

- Flood Restoration funds shared between State and Federal Governments – \$4.5M
- NSW Government's 2022 Community Local Infrastructure Recovery Package – Arts and Cultural Priority Needs Program – \$135,821
- 2023 Community Local Infrastructure Recovery Package – \$494,400



- State Library of NSW Public Library Infrastructure Grants – \$325,427
- Lismore City Council – \$222,000.

The Lismore Pop-up Library on Molesworth Street and the Lismore Children's Library in Lismore Central Shopping Centre have merged and relocated to the refurbished Lismore City Library on Magellan Street. These temporary locations closed from 1 pm on Saturday, 25 January 2025, to allow equipment and collections to be transferred to the new building. Library members will have access to the Goonellabah Library and the online library during this period, and all loan dates have been extended to cover this brief interruption to service. The Lismore Central Shopping Centre community book swap will continue to operate.

An official opening event is being planned for March with a community open day featuring a range of events being planned for May.

**The library opens 9.30am Monday to Friday and closes at 5pm, except for Thursday 7pm close. It is also open 9am to 1pm on Saturdays, and 1pm to 4pm Sundays.**

# DEVELOPMENT CONSENTS ISSUED

## ENVIRONMENTAL PLANNING AND ASSESSMENT ACT

In accordance with the provisions of Section 4.59 of the Act and Clause 124 of the EP&A Regulation, notification is given that the undermentioned developments have recently been granted consent.

### APPLICATION DETAILS

**DA23/183 1158 Pinchin Road, The Channon:** As built ancillary non-residential outbuilding with facilities and change of use of concrete water tank to a swimming pool.

**DA23/255-3 83, 85 & 87 Magellan Street, Lismore:** Section 4.55(1A) modification to development consent 5.2023.255.2 by deleting Condition 29 as a mechanical ventilation certificate cannot be provided as the cooking being undertaken onsite does not require commercial mechanical ventilation.

**DA24/235 408 & 450 Alphadale Road, Tregear:** To undertake the use of a former church to enable small-scale wedding ceremonies (no receptions) and associated demolition works, alterations & additions to the existing building; construction of a new amenities building; construction of new driveway access, car parking, and bus bay and construction of new picket fence to property boundary.

**DA24/271-2 2 Stewarts Way, Nimbin:** Section 4.55(1A) modification to development consent 5.2024.271.1 by re-siting the dwelling 3m from east boundary, incorporating a rumpus/storeroom on ground floor and to reduce the size of the deck.

**DA24/300 7 Barker Street, South Gundurimba:** Placement of shipping container for storage.

**DA24/314 2 Darsham Avenue, Girards Hill:** To undertake the removal of one-native tree in a heritage conservation area.

**DA24/315 36 Bridge Street, Wyrallah:** New carport attached to existing dwelling with a building line variation to 2.46m to Bridge Street and associated retaining walls and driveway.

**DA24/321 8 Tranquil Court, Nimbin:** Two storey re-sited dwelling, inground swimming pool and shed with amenities and mezzanine floor.

**DA24/326 16 Cochran Place, Lismore:** Alterations and additions to existing shed.

**DA24/327 45 Hidden Valley Circuit, Chilcotts Grass:** Dwelling addition (covered patio), retaining walls and associated earthworks.

**DA24/329 1001 Dunoon Road, Modanville:** Alterations and additions to an existing dwelling.

**DA24/332 1 McKenzie Road, Eltham:** Inground swimming pool.

Details of applications and consents, together with conditions attached, may be inspected at Council's Corporate Centre during business hours or via DA Tracking at [www.lismore.nsw.gov.au](http://www.lismore.nsw.gov.au).

# DEVELOPMENT PROPOSALS

## ENVIRONMENTAL PLANNING AND ASSESSMENT ACT

As the consent authority, Council has received the following development applications for consideration.

**DA NUMBER:** 24/334

**LOCATION AND DP LOT:** 25 and 27 Uralba Street and 80 Diadem Street Lismore (DP 373431 lot 1, lot 2 and lot 3).

**APPLICANT:** Planit Consulting.

**PROPOSED DEVELOPMENT:** To undertake the:

1. demolition of the existing community facility building, car park, access ramp and the removal of four (4) trees; and
2. construction of a new community facility building and associated driveway, car parking and landscaping.

**CLOSING DATE:** 17 February 2025.

If you wish, you may make a submission to the Council in relation to the Development Application. Any submission must specify the grounds of objection (if any).

The above Development Application(s) and accompanying documents may be inspected at Council's Corporate Centre, 43 Oliver Avenue, Goonellabah, during ordinary office hours or via DA Tracking at [www.lismore.nsw.gov.au](http://www.lismore.nsw.gov.au).

Further information relating to written submissions is available on Council's website. There are laws regarding the mandatory disclosure of political donations in relation to planning matters. Political donations disclosure reporting forms are available from the Department of Planning at [www.planning.nsw.gov.au](http://www.planning.nsw.gov.au).







# SAVE THE DATE: LISMORE SENIORS FESTIVAL 2025 - 3 TO 15 MARCH

Lismore City Council is pleased to deliver the Lismore Seniors Festival 2025. Funded by the NSW State Government, this festival is a celebration of seniors within our community and across NSW. While the program is still under development, we can provide a sneak peek of what is planned, with much more to come including arts and educational activities. Bookings open 11 February, head to [www.lismore.nsw.gov.au](http://www.lismore.nsw.gov.au).

## Some events to look forward to include:

### Wednesday, 5 March:

**Craft Group Craft Show at Goonellabah Library**  
10am-12pm. Includes morning tea.

### Thursday, 6 March:

**Come and Try Lawn Bowls at Lismore Heights Sports Club**  
10am-11:30am. Includes morning tea.

**Writing workshop: Writing your life story for your family at Goonellabah Library.**  
10am-12pm. Includes morning tea.

### Friday, 7 March:

**Get active and social at GSAC with Fit & Fab, Eat & Gab**  
10:30am-12pm. Includes morning tea.

**Intergenerational Storytime at Goonellabah Library**  
10am-12pm. Includes morning tea.

**Come and try Softball at Albert Park**  
6pm-7pm. Followed by social BBQ.

### Monday, 10 March:

**Aqua and Social at Lismore Memorial Baths**  
8am-10am. Followed by morning tea.

### Thursday, 13 March:

**Come and Try Croquet at Lismore Croquet Club**  
8:30am – 12pm. Includes a light lunch.

**Come and Try Table Tennis at Far North Coast Table Tennis (Hepburn Park)**  
9am-12pm. Includes morning tea.

**Social Trivia at Lismore Regional Gallery**  
5:30pm-8pm. Food and drink are available to purchase.

### Friday, 14 March:

**Wilson's River Riverbank Walk**  
9am-11:30am. Includes light refreshments.

### Saturday, 15 March:

**Come and Try Lawn Bowls at Lismore City Bowling Club**  
12pm-4pm. Includes a BBQ lunch.



# NEW TOILETS AT POPULAR WADE PARK

The instillation of new toilet amenities at Wade Park is expected to be complete by May 2025, depending on weather, thanks to funding secured from the Department of Regional NSW under the 2022 CLIRP Community Assets Program.

The existing toilet block will remain operational until the completion of the new amenities, at which point the old structure will be demolished. The new amenities block will be located closer to the park's play equipment, in the location of the big red bus. This location was identified as preferable to the original location (number 4 on the Wade Park Master Plan) due to the toilet block size, site restraints and sewer connectivity.

The bus – a much-loved feature of the park – requires significant restoration to ensure it is safe for public use. As such, the bus will be removed to conduct an assessment to determine whether restoration is feasible.

The next stages of the Wade Park Master Plan, including the development of additional play, sport and recreation elements, will proceed once further funding is secured.

Further information and details about the Wade Park Master Plan project is available here: [www.lismore.nsw.gov.au/Council/Projects/Current-projects-1/More-projects/Wade-Park-Masterplan](http://www.lismore.nsw.gov.au/Council/Projects/Current-projects-1/More-projects/Wade-Park-Masterplan)







# NORPA UNVEILS ITS VISION TO STAY IN LISMORE

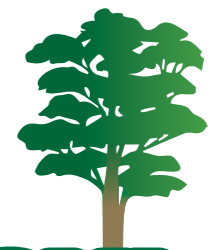
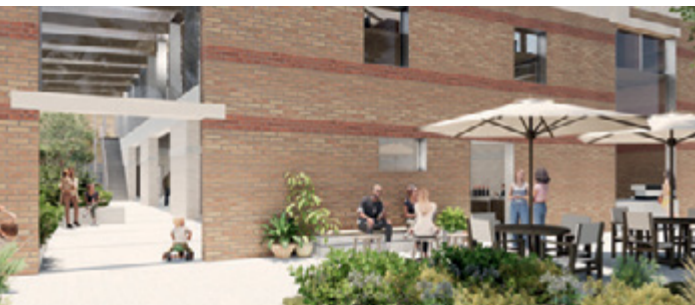
NORPA, the Northern Rivers Performing Arts has unveiled its vision for a new home in Lismore's CBD. The dream is to purchase the historic Hampton & Larsson timber factory, and transform the site into a flood-resilient, cultural hub that can be a creative beacon for the entire region. It will be called *The Joinery*.

*The Joinery* will provide NORPA with a much-needed permanent home. Once completed, the facility will support a beacon for the entire region:

- A professional space for artists to rehearse and create work for regional and national presentation
- An incubator for creativity, hosting artists-in-resident from Australia and overseas
- A training centre for local talent in acting and dance, stage design and technical production
- A collaborative space fostering the region's creative and social enterprise's initiatives
- Large versatile contemporary spaces for hosting special events and productions
- Cutting-edge, flood-resilient facilities that demonstrate the role of art in regional renewal and adaptation

To make the dream a reality, NORPA needs your help to raise \$600,000 to purchase the building, catalysing a \$9.1 million development supported by investment support from government, private and community.

Head to NORPA's website [NORPA.org.au/a-new-home](http://NORPA.org.au/a-new-home) to find out more and to action your support by signing a petition to voice your support, and or to donate to the project.



## Have Your Say!

### Urban Green Corridors Plan Operational Review 2024-25



Lismore City Council is reviewing the Urban Green Corridors Plan (2017), which helps guide the conservation and restoration of biodiversity in our urban area. The Plan identifies wildlife corridors throughout Lismore covering most of our urban bushland areas, with the goal of enhancing these green spaces for both wildlife and people.

After an initial review of the plan's progress, we want to hear from you. Your feedback is important in shaping how we manage our urban bushland reserves and support local biodiversity.

Scan the QR code to read the Discussion Paper with the results of our review and proposed updates to the Plan, view maps of the wildlife corridors and complete a feedback survey.

Submissions close 23 February 2025







## CONTACT US: 6625 0500

**Corporate Centre:** 43 Oliver Avenue, Goonellabah

**Hours:** Monday to Friday, 8.30am to 4.30pm

**Post:** PO Box 23A, Lismore, NSW 2480

**Email:** [council@lismore.nsw.gov.au](mailto:council@lismore.nsw.gov.au)

**Web:** [www.lismore.nsw.gov.au](http://www.lismore.nsw.gov.au)



Find us on Facebook, Instagram  
and YouTube.

