



LOCAL MATTERS

LISMORE CITY
COUNCIL NEWS
ISSUE 254, 1 APRIL 2024



WWW.LISMORE.NSW.GOV.AU





RESIDENTS ENCOURAGED TO DIVE INTO FREE SWIM SEASON AT MEMORIAL BATHS

Entry to the popular Lismore Memorial Baths is now free for the rest of this season after Councillors voted to waive entry fees to encourage people to make use of the facility after it was repaired from the 2022 natural disaster.

The Lismore Memorial Baths swimming season ends on Sunday, 28 April.

Recognising the pivotal role of the Baths in promoting well-being and community engagement, Council is committed to encouraging increased usage of this facility.

With the rising cost of living, Council is committed to providing opportunities for the community to cool down, have fun and get some

exercise without financial strain. It's not just about staying fit, it's also about hanging out with friends and family and feeling connected to our community.

The decision to waive fees comes with a projected cost of \$56,400, covering the period from 12 March to 28 April.

Council has identified funding options to fulfill this commitment.

It is anticipated Council will receive sufficient interest revenue to cover the costs, as outlined in the March Quarterly Budget Review Statement.

So, whether you're in the mood for a leisurely swim, eager to kickstart your exercise routine, or simply looking to spend quality time with loved ones, the Baths is open and free for everyone. Come on down!

LISMORE DELEGATION TO YAMATO TAKADA TOUCHES DOWN

Members of Lismore City Council's delegation to our Japanese sister city arrive in Yamato Takada this week for a four-day visit to celebrate the 60th anniversary of our relationship – the oldest between Australia and Japan.

Led by Mayor Steve Krieg, the delegation includes Councillors Bing and Ekins, along with six community members who nominated themselves to represent Lismore through an Expression of Interest process late last year. All delegates are paying their own costs.

Among the delegates is Julie Burton, an enthusiastic junior coach at the Far North Coast Table Tennis Club. She said she is embarking on a mission to bridge cultures and sports by connecting with her Japanese sister city.

“My motivation to go is to hopefully create a connection with the Yamato Takada Table Tennis Club by meeting someone face to face so I can invite them to our club in Goonellabah,” she said.

“Some of the best Table Tennis players in the world come from Japan and it's their second biggest sport, so it's a worthwhile journey to forge this connection. We could certainly learn a lot from them and empower our own club.”

When the delegates arrive in Japan, they will embark on a visit celebrating the breathtaking Sakura season and the enduring partnership between Lismore and Yamato Takada.

Highlights of the visit will include cherry blossom viewing at Onaka Park, meetings with Yamato Takada Mayor Horiuchi and other dignitaries, tours of local landmarks, including the Kashihara Shrine and insights into the region's disaster recovery efforts caused by landslides.

At its core, this journey symbolises a shared commitment to developing cultural, economic and educational exchanges, laying the foundation for a brighter, more interconnected future.

By creating meaningful connections and collaborations, this visit aims to not only strengthen the bonds of friendship but also to cultivate prosperity and growth for both communities.

Lismore City Council is thankful for Yamato Takada's warm invitation. It is committed to ensuring that this visit strengthens the bonds of friendship and cooperation that have flourished over the past 60 years.



Some of the members of Council's delegation to Yamato Takada



Photo: Hamish McCormick

UNDERSTORY: A MAGICAL OUTDOOR THEATRE SHOW FOR KIDS.

16 - 28 April, Lismore Rainforest Botanic Gardens

Have you heard fungi talk? Have you felt a forest hum?

Understory is a magical, interactive theatre adventure created for children by Roundabout Theatre, springing to life in the Lismore Rainforest Botanic Gardens this April school holidays from 16-28 April.

Part theatre, part quest and part wacky science field trip, Understory is made to inspire children aged 7-11 years with a deep curiosity, wonder and connection to the natural world. The entire Hoop Pine Forest at Lismore Rainforest Botanic Gardens will become an enchanting theatrical world brought to life by an original story that is both fantastical and based in science and ecology principles.

Understory is engaging and interactive, with only small groups participating in each 1.5 hour session. Accompanied by two 'Wonderer' characters, children embark on an important mission to save the forest from disarray. On their quest they collect clues, solve puzzles, crack codes, navigate obstacle courses and work together with the forest to shape the journey and outcome.

Discover the magical adventure of Understory in the Lismore Rainforest Botanic Gardens this school holidays! Limited spaces so book early.

Understory by Roundabout Theatre.

Lismore Rainforest Botanic Gardens.
313 Wyrallah Rd, Lismore.

16 – 28 April (except 17, 22, 25 April).
Two shows daily / 10am and 2:30pm.

Tickets \$30 (group discounts available)
www.understory.roundabout.net.au



PEARCES CREEK BRIDGE OFFICIALLY OPENED

The new \$5.4 million Pearces Creek Bridge was officially opened last Tuesday providing farmers with improved access to markets, and motorists and the community with much safer travel.



Mayor Steve Krieg joined member for Lismore, Janelle Saffin, Parliamentary Secretary for Regional Transport and Roads, Anna Watson and Ballina Mayor, Sharon Cadwallader for the official opening.

Mayor Krieg said the replacement of the existing wooden bridge, which had been reduced to one-lane with a strict load limit, was much needed.

The new Pearces Creek Bridge has already greatly improved safety for heavy vehicles, school buses and motorists driving across the Creek.

The new bridge is much more modern, has a stronger structure and is meeting the needs of today's road users. It is a great example of Lismore and Ballina councils working together cooperatively in the interest of both communities.

The aging wooden bridge that spans the two local government areas and is a key connection in the local road network, has been replaced by a two-lane concrete structure with guardrails.

The new bridge will improve safety for road users, reduce maintenance costs and has reinstated the bridge from one lane to two lanes with the load limit removed.

The project has been funded by the NSW Government: Fixing Country Bridges Program and the Federal Government: Bridge Renewal Program.



Australian Government



**NSW
GOVERNMENT**



DEVELOPMENT CONSENTS ISSUED

ENVIRONMENTAL PLANNING AND ASSESSMENT ACT

In accordance with the provisions of Section 4.59 of the Act and Clause 124 of the EP&A Regulation, notification is given that the undermentioned developments have recently been granted consent.

APPLICATION DETAILS

DA21/452-2 1112 Bruxner Highway, McKees Hill: Section 4.55(1A) Application to Modify Consent (5.2021.452.2) to amend Conditions 1, 20 & 27 to enable the external ground surface of the approved transport depot to contain a combination of gravel, Geohex (concrete filled), and chip sealed bitumen.

DA22/302 5 Bright Street, East Lismore: Dwelling additions and alterations.

DA23/161 4 Keoghan Drive, Goonellabah: Shed with attached carport.

DA23/209 13 Pineview Drive, Goonellabah: Remove timber retaining wall within easement and replace dilapidated timber retaining wall with a new concrete sleeper retaining wall.

DA23/240 564 Keerrong Road, Keerrong: Construction of a two-storey dwelling.

DA23/241 146 Cameron Road, McLeans Ridges: Shed with a building line variation to 4.400m to Cameron Road.

DA23/245 24 Spurfield Road, McLeans Ridges: To undertake the construction of a dwelling, home office, garage, carport and inground swimming pool.

DA23/254 30 Dunoon Road, North Lismore: Alterations and additions to existing recreation facility (Outdoor) Lismore Kart Club by undertaking the construction of a new amenities building, new outgrid/pitt shed and new mower shed.

DA23/255 83, 85 & 87 Magellan Street, Lismore: To undertake: (1) The change of use of an existing commercial premises to a food and drink premises (75 seat café), community facility and ancillary art gallery, and (2) Associated internal and external alterations and additions to facilitate the change of use and improve the flood immunity of the building.

DA23/259 37 Habib Drive, South Lismore: To undertake the erection of a two-storey shed comprising ground floor covered parking (3 spaces) and first floor flood-free storage, sealing and line-marking of the existing car park and driveway, and related stormwater drainage works. The proposal is classified as nominated integrated development and integrated development in accordance with s4.46 of the Environmental Planning and Assessment Act 1979. Approval from NSW Department of Planning and Environment (Water) is required in accordance with Water Management Act 2000. The consent authority is the Lismore City Council.

DA23/271 76 Willis Road, Tregear: Dwelling alterations and additions and swimming pool.

DA23/307 6 Taylor Street and 2 Wardell Street South Lismore: To undertake a boundary adjustment subdivision between two (2) lots.

DA23/321 3 Bottlebrush Place, Caniaba: To undertake the erection of a new dwelling to create a detached dual occupancy with associated earthworks, retaining wall and driveway.

DA23/329 94 Hunters Hill Road, Corndale: Alterations and additions to an existing dwelling.

DA23/336 15 Kraus Avenue, South Lismore: To undertake the construction of a roof structure over the existing liquid storage area.

DA24/10/2 41 James Street, Dunoon: Section 4.55(1) modification to Development Consent 5.2024.10 to change description to dwelling, shed with attached carport and retaining wall.

DA24/15 4 Birdwing Place, Modanville: To undertake the re-siting of a dwelling, alterations and additions and construction of new detached garage and driveway in the following stages; Stage One: Re-sited dwelling, construction of a new laundry, entry stairs, detached garage and driveway, Stage Two: Extension of the existing wester façade and internal alterations to create a master-bedroom suite.

DA24/31 10 Sunny Place, Modanville: Shed.

Details of applications and consents, together with conditions attached, may be inspected at Council's Corporate Centre during business hours or via DA Tracking at www.lismore.nsw.gov.au.

NORTHERN RIVERS RAIL TRAIL

CASINO TO BENTLEY SECTION OPENS WHILE CONSTRUCTION ADVANCES TOWARDS LISMORE

The much-anticipated Casino to Bentley section of the Northern Rivers Rail Trail is now officially open for adventure!

Mayor Krieg attended the opening event last week, showing Council's support for this important project for the region. With cyclists, families and outdoor enthusiasts eagerly exploring the trail's stunning scenery, excitement mounts for the anticipated completion of the Bentley to Lismore section, scheduled for completion in late 2024.

With the Tweed section already exceeding expectations, drawing in on average over 14,000 visitors each month, the Northern Rivers Rail Trail is set to be a major driver of regional tourism.

Funded by the Australian Government's Building Better Regions program, the Lismore to Bentley section promises to unlock opportunities for local businesses and communities.

To stay informed visit the Northern Rivers Rail Trail page at yoursay.lismore.nsw.gov.au/bentley-lismore-rail-trail.

Pictured from left to right is Tweed Mayor Chris Cherry, Richmond Valley Mayor Robert Mustow and Lismore City Mayor Steve Krieg.



WHAT'S ON AT YOUR LOCAL LIBRARY

Senior Writers Masterclass

Thursday, 4 April, 5pm-6.30pm at Lismore Pop-up Library

Author Shel Sweeney presents this series of masterclasses for ages 13-17 years. Students will develop their creative writing techniques across a range of genres. Classes are designed to be inclusive, fun and to celebrate the joy of storytelling.

Tech Savvy Seniors: Using Smart TVs

Monday, 8 April, 3pm-4pm at Lismore Pop-up Library

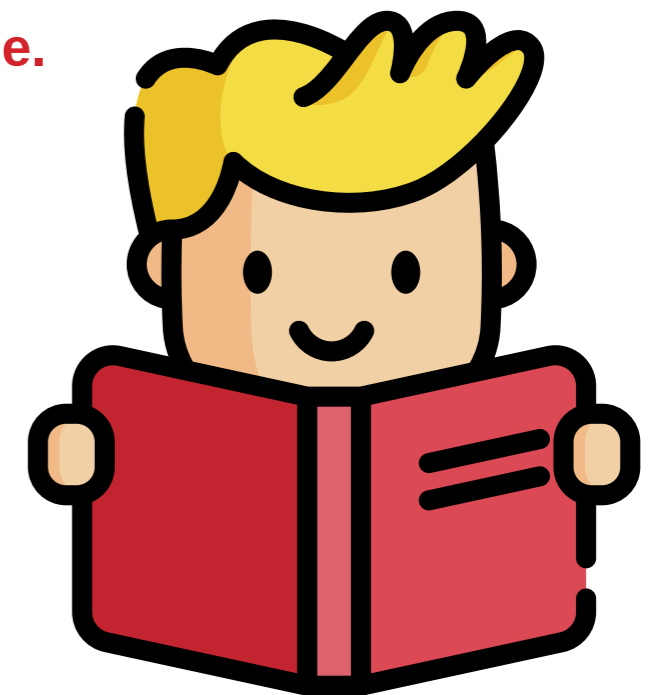
Learn how to identify if your TV is smart already, and how to make it smart if it isn't. Learn how a smart TV uses the internet to take your entertainment options beyond regular TV broadcast programming.

School Holidays at Lismore Area Libraries

15 April to 26 April at various locations

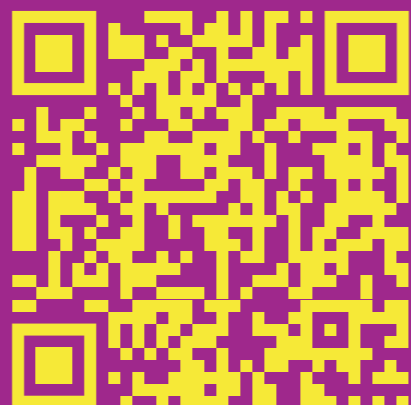
April school holidays at your libraries are going to be so much fun! As always, we have a great range of fun and decorative crafts. We are also hosting film and acting workshops with industry professionals, as well as getting the always-popular Lego sets out.

To book, scan the QR code.



Converge

LISMORE CREATIVE ENTERPRISE DEVELOPMENT PROGRAM



In partnership with the NSW Reconstruction Authority, Council is proud to unveil the innovative Converge program, a fresh and ambitious initiative to infuse Lismore's CBD with creative vitality.

Emerging and established artists, performers, creatives and entrepreneurs who are local to the Lismore Local Government Area, and interested in this incubator program within a collective working space are invited to submit their expression of interest.

As a disaster recovery initiative, Converge is designed to bring new life and energy to Lismore's CBD and is an important step forward in Council's commitment to supporting the arts and encouraging economic development within our vibrant community.

Successful applicants will enjoy a series of professional development and entrepreneurial supports, community interaction, plus engagement and opportunities to exhibit artworks and present directly to the public.

Converge is designed to bring new life and energy to Lismore's CBD, contributing to its continued growth as a thriving cultural hub, celebrating its unique character, community and world-class creative industry.

Successful applicants will gain access to programs within the Converge residency space in the Lismore CBD from mid-May to late December 2024.

Expressions of interest for Converge are due by the end of business on Monday, 15 April and can be submitted by visiting

yoursay.lismore.nsw.gov.au/converge.



CONTACT US: 6625 0500

Corporate Centre: 43 Oliver Avenue, Goonellabah

Hours: Monday to Friday, 8.30am to 4.30pm

Post: PO Box 23A, Lismore, NSW 2480

Email: council@lismore.nsw.gov.au

Web: www.lismore.nsw.gov.au



Find us on Facebook, Instagram
and YouTube.

