



GOONELLABAH SKATEPARK

LISMORE CITY COUNCIL
FINAL CONCEPT REPORT

ADDRESS: Goonellabah Skatepark
50 Oliver Avenue,
Goonellabah NSW 2480

LGA: Lismore City Council

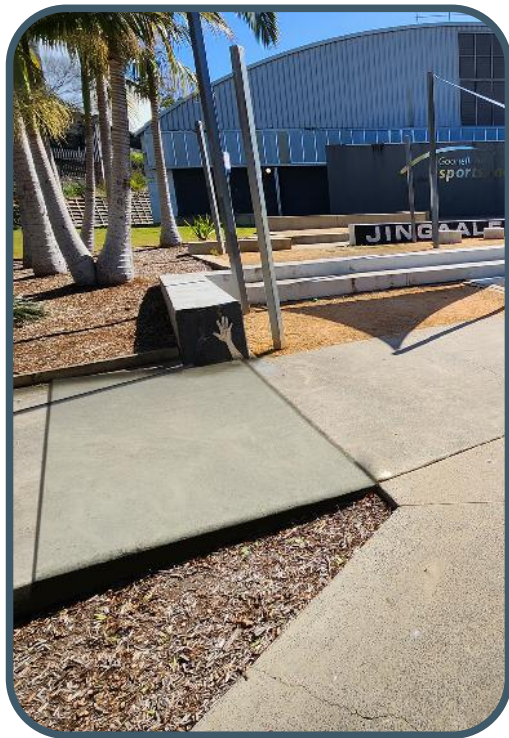
ISSUE: FINAL

REVISION: G

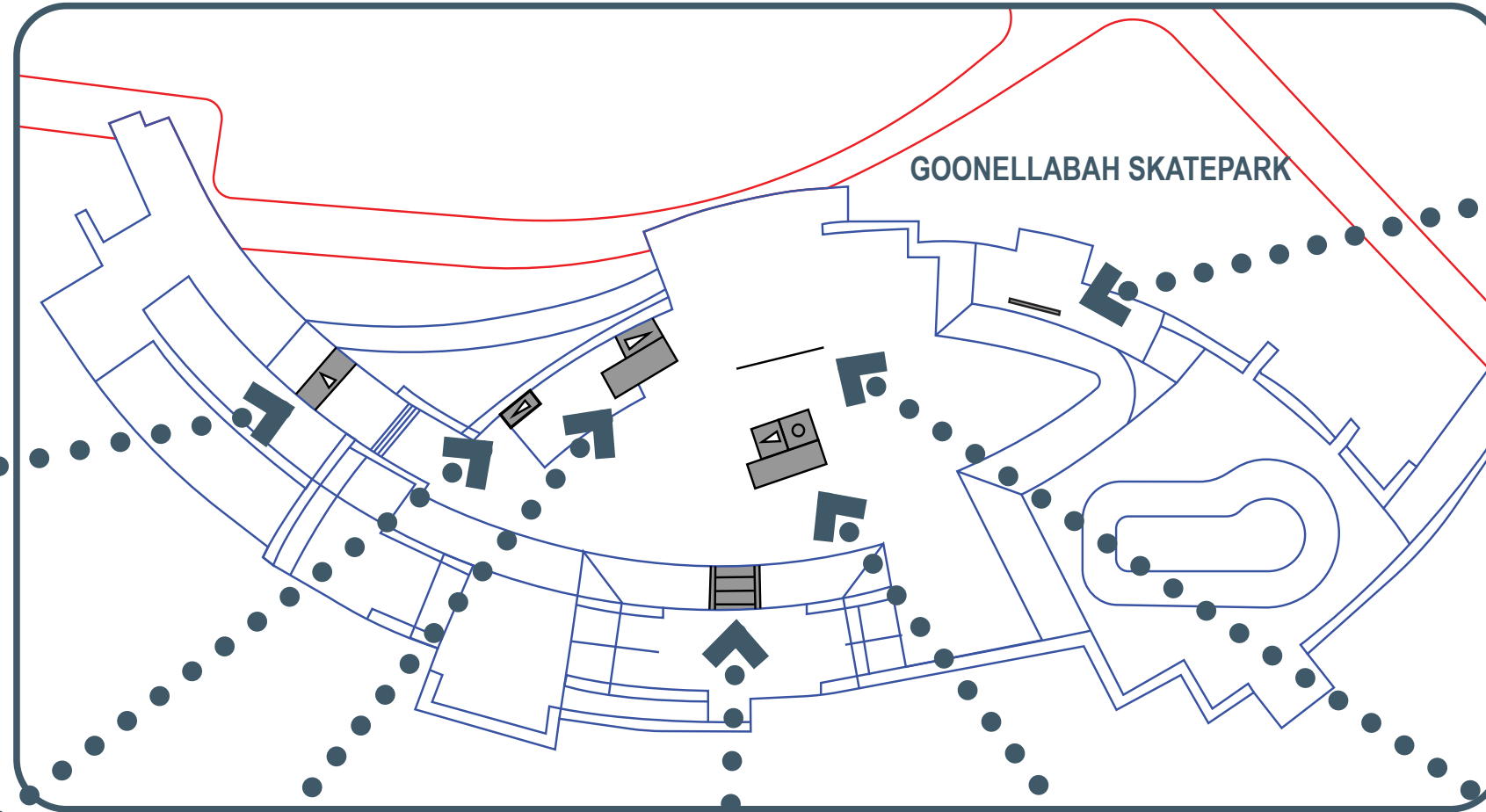
DATE: 02.05.2024

4.1 DRAFT CONCEPT OPTION

- All images have been sourced through TSP.



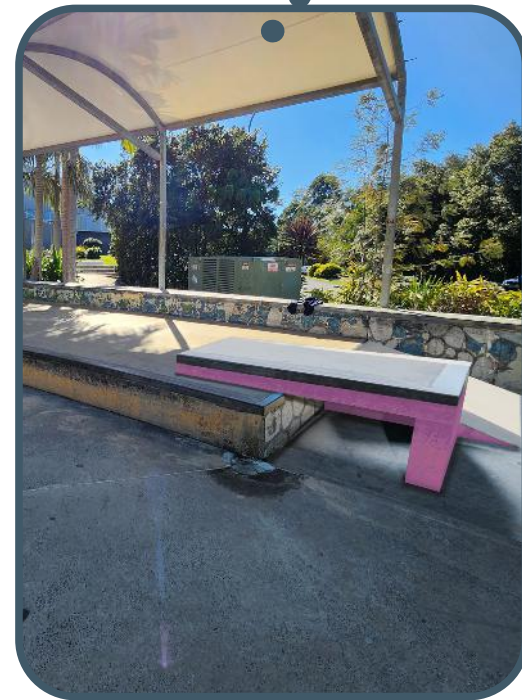
› Up-Ramp



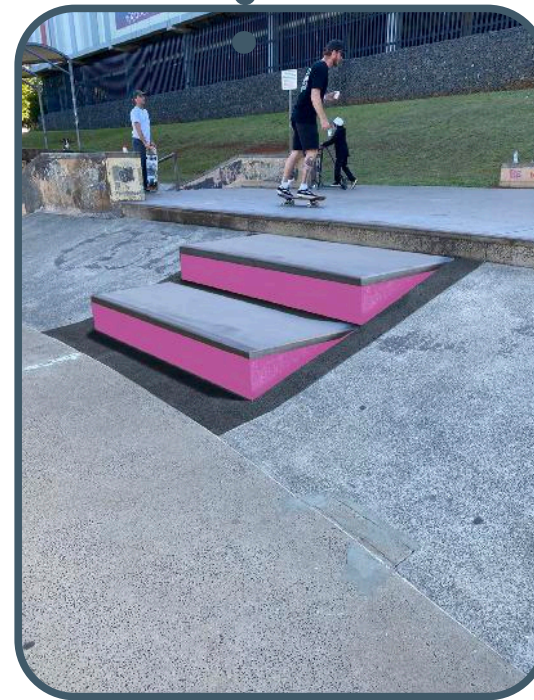
› Slappy Kerb



› Stage Up-Ramp



› Pier 7 & Stage Up-Ramp



› Wide Stair Ledge Combination



› Hydrant Gap & Manual Pad



› Flat Bar Rail

5.1 FINAL SKATEPARK CONCEPT PLAN

SKATE LEGEND

- ① Up Ramp
- ② Stage Up Ramp
- ③ +200 (H) Pier 7 & Stage Up Ramp
- ④ Wide Tread Stair Set (Height TBD On-Site)
- ⑤ +250 (H) Manual Pad
- ⑥ +250 (H) Loading Dock with Hydrant Bonk
- ⑦ +300 (H) Flat Rail
- ⑧ +200 (H) Slappy Kerb
- ⑨ +400 (H) Hubbas & Stair Set (Stage 02)

LANDSCAPE EMBELLISHMENTS

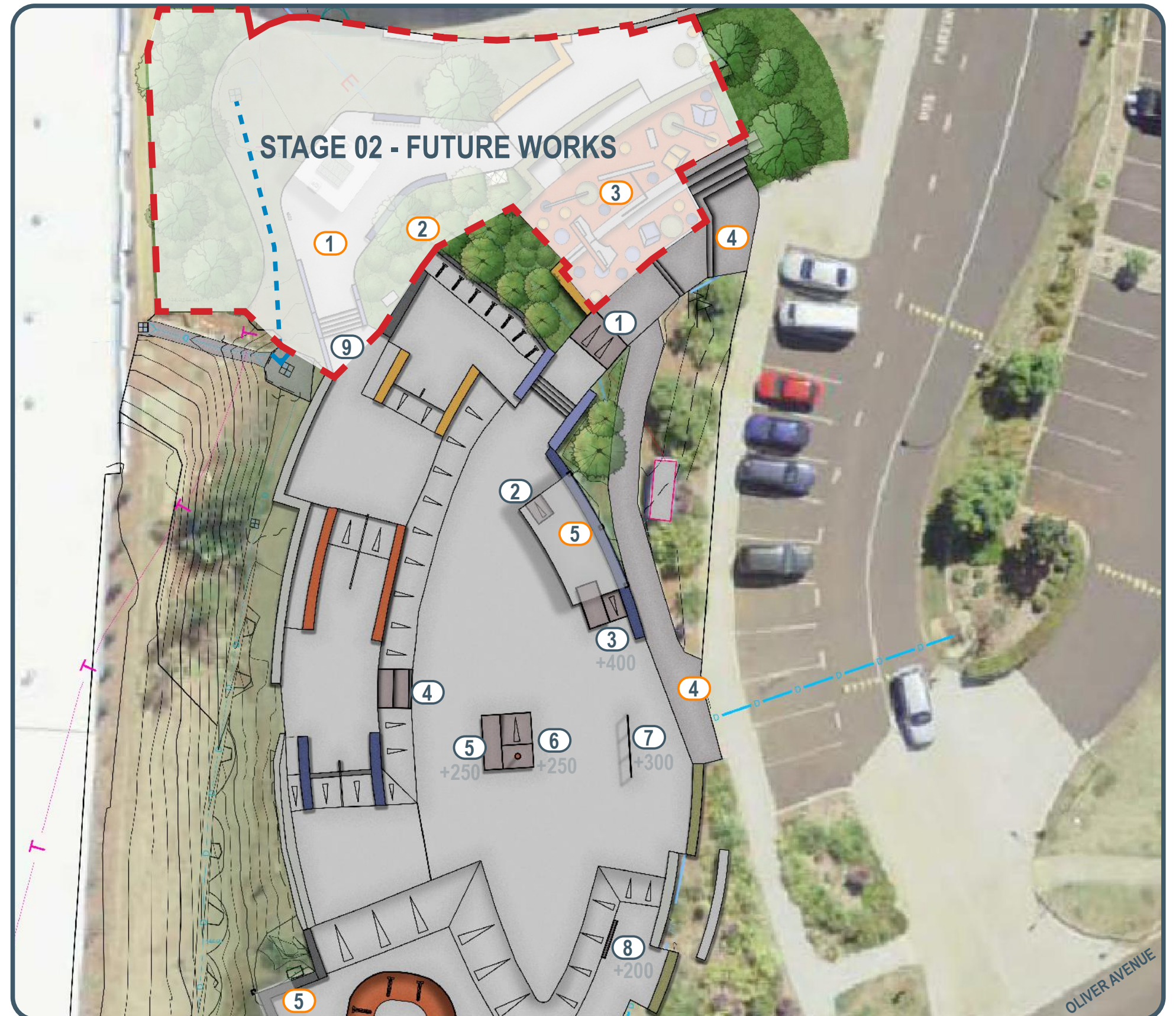
- ① Proposed Refuge Space with 4x4, Shelter, In-situ Concrete Block Seating, Water Fountain, Bin Receptacles & Universal Access via Pathway Connection from GSAC (Stage 02 Future Works)
- ② Proposed Garden Beds (Stage 02 Future Works)
- ③ Proposed Parkour/Active Play Space with Climbing Walls, Rubber Sofffall (Stage 02 Future Works)
- ④ Existing Skatepark Entry & Access Path
- ⑤ Existing Shelter & Block Seating
- ➡ Proposed Drainage Swale

STAGES

Stage 01 - Proposed Skatepark Obstacles (See Skate Legend)

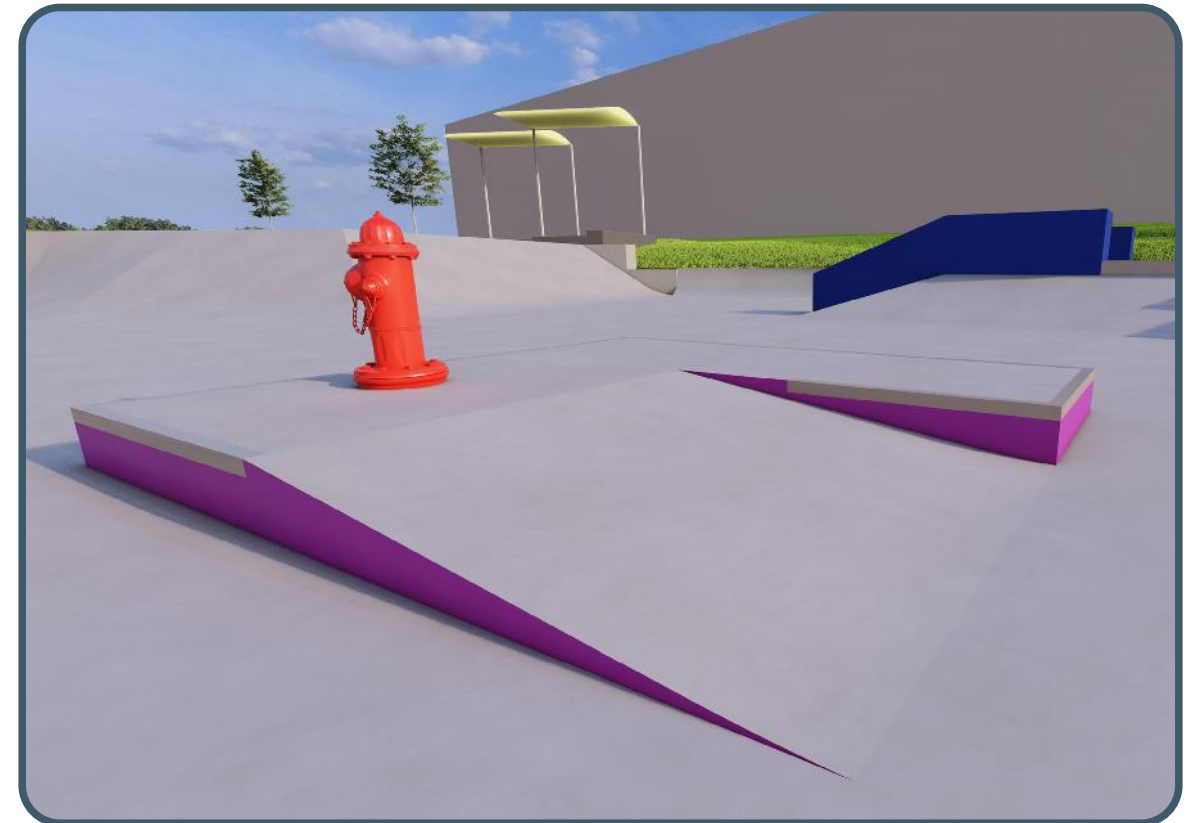
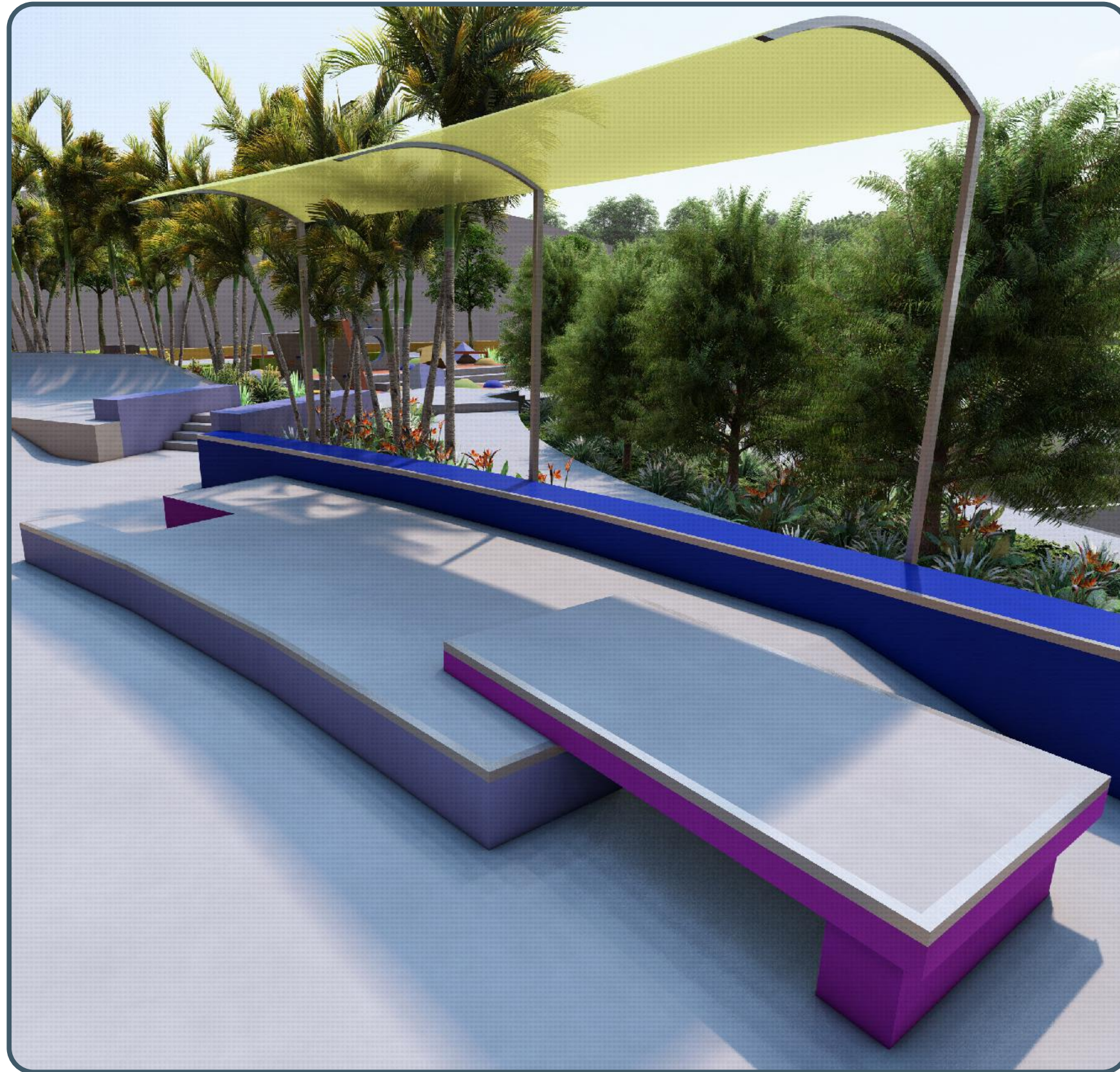
- **Stage 02 (Future Works)** - Refuge Space with 4x4, Shelter, In-situ Concrete Block Seating, Water Fountain, Bin Receptacles & Universal Access via Pathway Connection from GSAC. Proposed Half-Court Basketball area that maintains the existing access to GSAC. Design provides additional skate obstacles whilst maintaining the function of the existing drainage swale on site.

Stage 2 - Existing Skatepark Maintenance Works



FINAL CONCEPT PLAN NOT TO SCALE

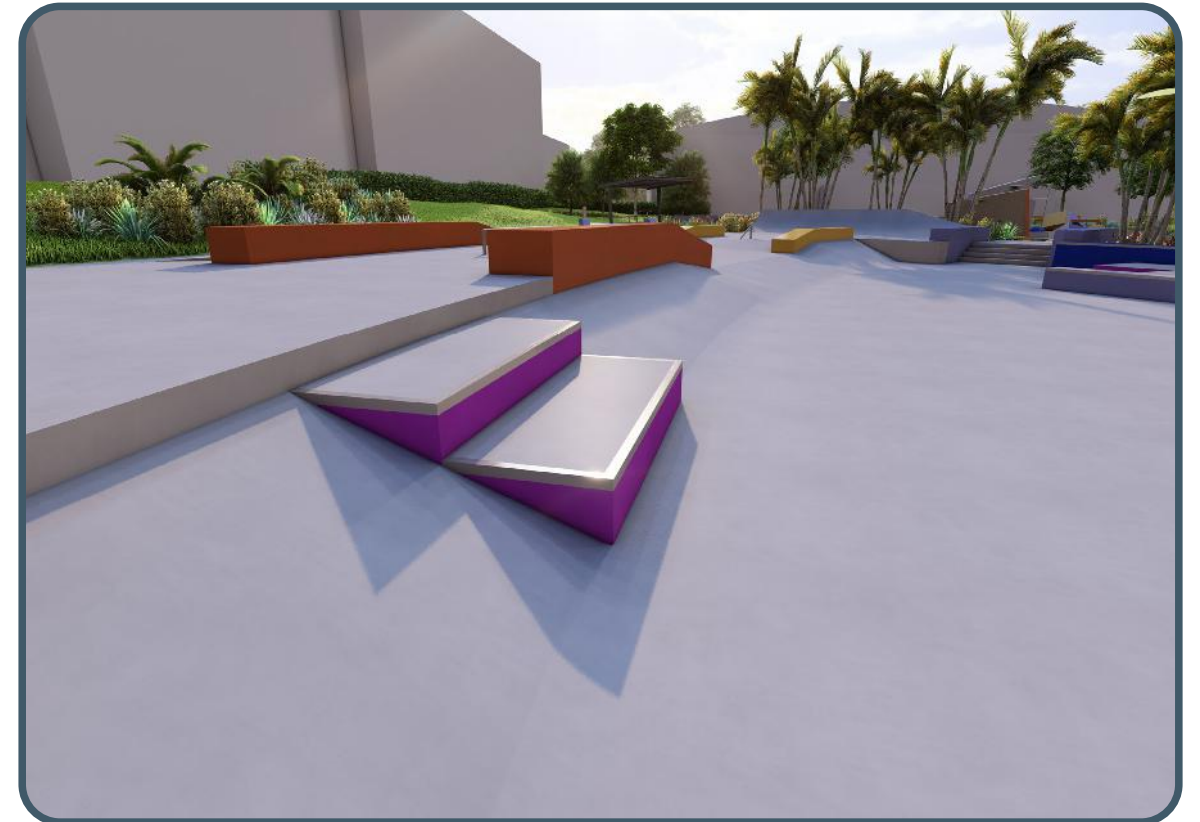
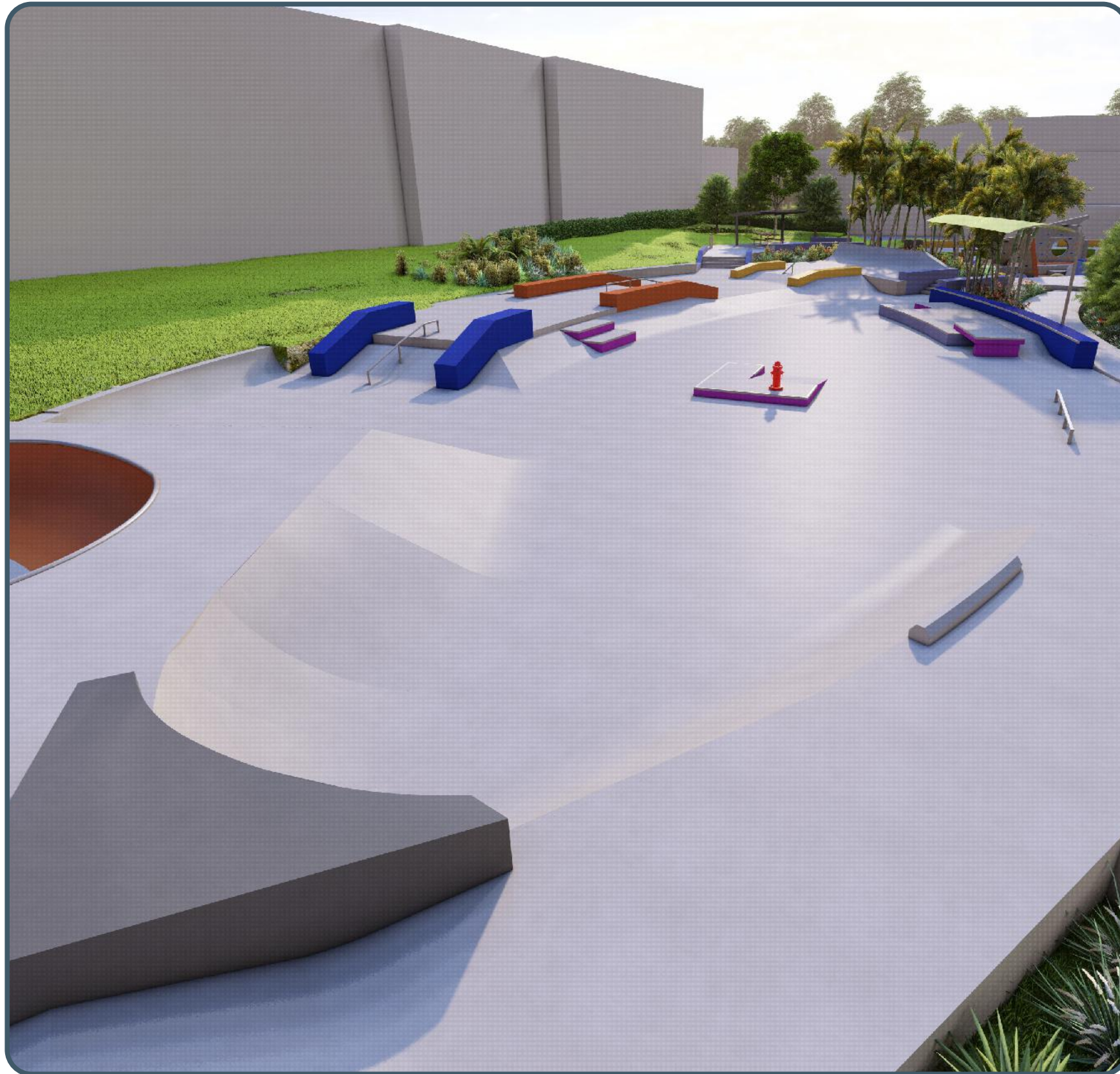
5.2 FINAL SKATEPARK CONCEPT 3D RENDERS



cultivating
active
healthy
communities.



5.2 FINAL SKATEPARK CONCEPT 3D RENDERS





cultivating
active
healthy
communities

Consultation & Design | Skate park Construction | Contract Administration | Project Management
A: PO Box 5771, Maroochydore, QLD 4558 | E: info@trinityskateparks.com.au | W: trinityskateparks.com.au | P: +61 (07) 5314 1114

