

INTERIM COMMUNITY ENGAGEMENT REPORT

LISMORE SKATEPARK AND YOUTH PRECINCT

September 2023



GET INVOLVED!

LISMORE SKATEPARK & YOUTH PRECINCT

We want your help to design the new youth precinct in LISMORE! Come along to either of the draft design workshops listed below to see the new concept design and let us know what you think.

HOW CAN I GET INVOLVED?

DESIGN WORKSHOPS:

When: Design Workshop 1

Wednesday 13th
September

4:00pm - 5:30pm

Design Workshop 2

Wednesday 13th
September

6:00pm - 7:30pm

Where: Lismore PCYC

Corner Orion and
Dawson St, Lismore

Please scan QR Code to
register for the event:



Light refreshments will be provided.

Funded by NSW Government.

Ahead of the design workshops, this report identifies and outlines what is important to our community, regarding the upcoming Lismore Skatepark and Youth Precinct

Table of Contents

Engagement Snapshot for Workshops	3
Introduction	4
1. Overview of engagement activities	4
1.1 Who we have reached.....	5
1.2 Survey Findings.....	5
1.3 Social Media comments	10
2. Next steps	11

ENGAGEMENT SNAPSHOT FOR WORKSHOPS

Over 400+ people have given feedback through Your Say (both surveys and Ideas board), written reports, social media comments and conversational feedback to date. Further details of this are listed later in this report.

The big questions from feedback...

- **Will it be flood proof?**
 - o What flood resilience measures are being taken?
- **What is being done for shade?**
 - o What trees are being planted/taken out?
 - o Is there a shade plan?
 - o Will there be shade over the skatepark, as well as seated areas?
- **How are we stopping misuse of park/graffiti/unwelcome behaviour?**
 - o Safety and security measures
 - o Monitoring the park
 - o Curfew/lights off time
 - o Road safety
- **Will there be basketball courts?**
- **What is there for little kids?**
 - o Play equipment, water parks, small kids beginners' area?
- **Will there be public toilets?**
 - o What other amenities will be there? i.e. bubblers, café, BBQ's, car parking, suitable seating for spectators?
- **How will this precinct be event friendly?**
 - o Will there be an outdoor amphitheatre?
 - o Space for food trucks, live performances etc.?
- **What is happening to the old skatepark?**
 - o Can parts of this park be incorporated into the new skatepark.
 - o Assumption that the existing park did not have adequate maintenance, fears this will occur with the new skatepark.
- **Memorial site for the Italo Club and Simone Strobel. What happens to these memorials?**
- **Will the skatepark be named after Travis Watson?**
- **What money is being used to fund this skatepark, and where will funding come from to maintain it?**

Invitation to attend workshops and participate in the community engagement for this project was emailed directly to 172 contacts. These contacts include:

- Past consultation participants
- Youth, disability, Indigenous and social wellbeing organisations
- Industry organisations and businesses
- Local businesses
- Skate community members
- Event industry contacts

From this, social media posts and direct conversations, 80 contacts have been defined as interested in consultation, 53 specifically for workshops.

INTRODUCTION

The Lismore Skatepark and Youth Precinct will provide essential community infrastructure to support community wellbeing and help our city return to the thriving centre it once was. Providing Lismore with an amenity to facilitate economic recovery opportunities, event-attraction capabilities, and serve as a meeting point to bring together and uplift a community that continues to struggle with the psychological aftermath of consecutive natural disasters.

The 2300sqm park will be built next to Oaks Oval between Dawson and Uralba Streets in the CBD, linking the CBD block to Lismore Shopping Square. This part of Lismore is a thoroughfare for road and pedestrian traffic, and close proximity to sporting venues which host major and regular events.

Lismore City Council is keen to ensure our skateparks are safe and inviting spaces for all users to enjoy. The existing Lismore skate park on Victoria Street behind popular family attraction Heritage Park, has reached end of life. Requiring extensive work for the renewal and upgrade of existing facilities to respond to the needs of the community. In addition, the skate park in Goonellabah (built in 2009) has reached a point where upgrades are required to maintain the standard of the facility. Both facilities are frequently used by the community; however, a gap remains in providing a safe recreational space that is multipurpose for youth, accessibility, and events.

Council has now received \$3.9 million from the Multi-Sport Community Facility Fund 2022-23 to create the precinct, which will provide:

- A national standard skateboard facility
- Youth play experiences
- Sports climbing feature
- Bespoke seating
- Shade
- Sports lighting
- Capacity to run events for the whole community

1. OVERVIEW OF ENGAGEMENT ACTIVITIES

In December 2021 Lismore City Council commenced engagement to create a business case for the Lismore Skatepark and Youth Precinct. Since the funding announcement in December 2022, consultation with the community continued to inform the development of the concept plan. Community members were also encouraged to register their details for further community engagement as part of this process.

Engagement activities to date have included Council's Your Say page, the online Lismore Youth Space Survey, online Skatepark Consultation registration, online Feedback on Concept Plan ideas board, Social Media posts and informal conversations.

1.1 Who we have reached



1900

aware participants who visited the Your Say page at least once



143

responses received online via Lismore Youth Space Survey



395

comments received on Council's Facebook page posts



921

informed participants who engaged with the Your Say page content



45

respondents would like to participate in future consultation.



41

contributions to the Concept Plan ideas board on Your Say, from 163 visitors

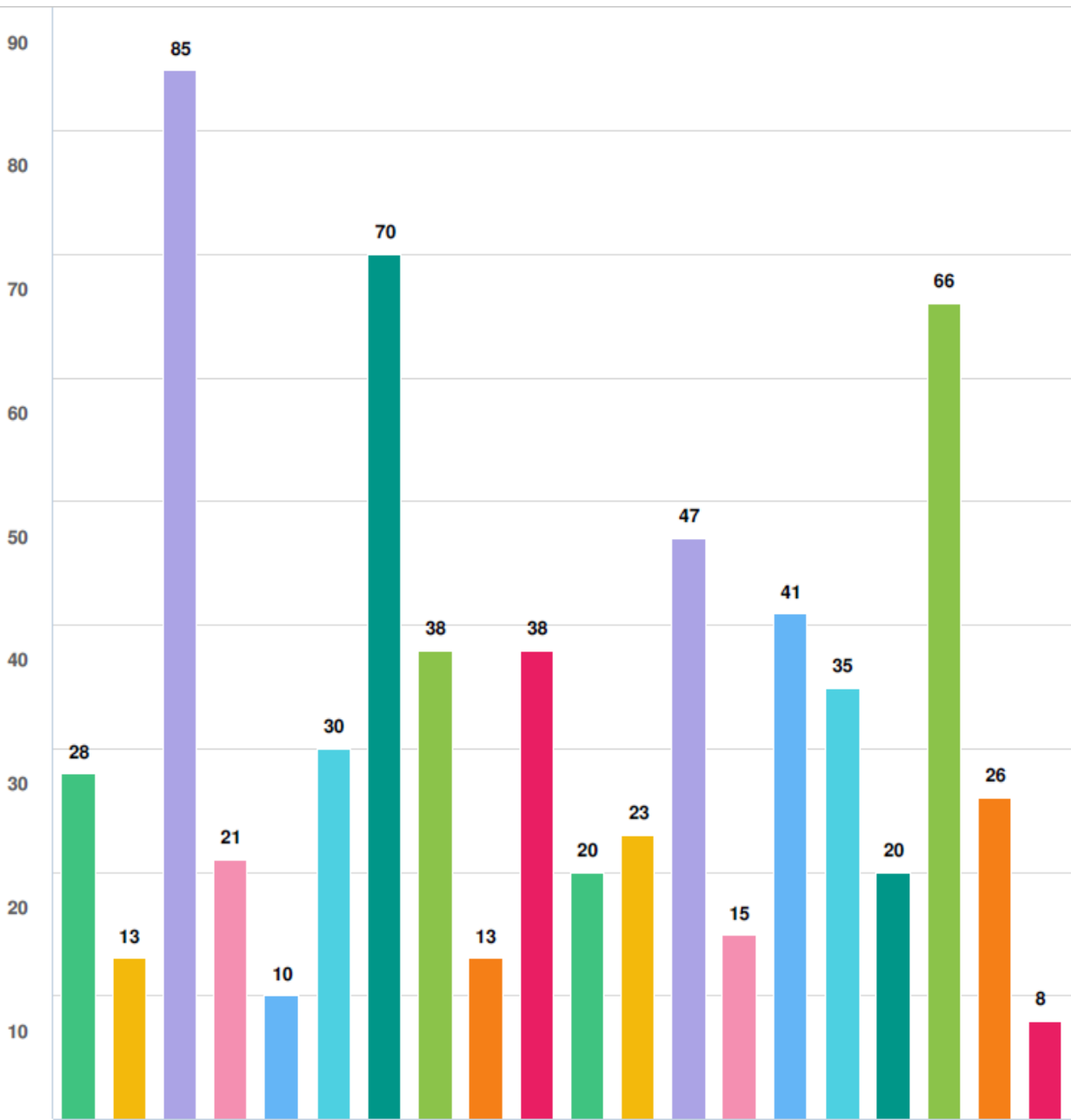
1.2 Survey Findings

Survey users told us they ride most often on a weekly basis and /would mostly likely use the precinct between 3pm-7pm.

The top 5 activities people would use the precinct for are:

1. Skateboarding
2. Being a spectator, parent/guardian
3. As a picnic area
4. Pedestrian/Walking
5. Dog walking

The graph below shows the preference for all activities. Respondents (141) were encouraged to tick all that apply.



Question options

- BMX ● Inline ● Skateboard ● Quad ● Crusier ● Scooter ● Spectator / Parent / Guardian
- Performance / Events ● Parkour ● Basketball ● Ping Pong ● Bouldering ● Pedestrian & Walking
- Learn to Ride ● Dog Walking ● Fitness Equipment ● Ball Sports Wall ● Picnic Area ● Kick About
- Other (please specify)

Your Say Lismore: Lismore Youth Space Survey, December 2021

Demographics

50% of survey responders are from Goonellabah (18.6%), Lismore (15%), East Lismore (10.7%) and South Lismore (5.7%). Notably, 35 suburbs were identified in this question, an indication that this precinct will bring visitors into the Lismore CBD.

The largest age group of survey respondents who participated are aged between 23-50 years.

53% of survey respondents indicated they ride at a 'Beginner' level.

51% of respondents identified as Male

What do people use now?

The top 5 favourite places people indicated they hang out now are:

- ✓ Goonellabah Skatepark
- ✓ Ballina Skatepark
- ✓ Lismore Netball Courts
- ✓ Nimbin Skatepark
- ✓ Lismore streets

'Goonellabah It has a good street skate section and bowl.' – survey respondent

'I most frequently skate behind Lismore Square and at the netball courts for proximity and because I like street obstacles.'- survey respondent

'Ballina and Nimbin skateparks as they have great transitions and have fairly large bowls'- survey respondent



Goonellabah Skatepark

What do people want to see as part of the skate park?

'If you could have one unique skate park feature in the design, what would it be?'

- Safe area for disabled skaters
- Shade & rehydration area for all year skating
- A range of flat bars and ledges
- Small half pipe for beginners
- Designated beginners' (kids) section that has easier obstacles
- A combination bowl for all skill levels
- Communal space for kids, families, and others to observe.
- Skatepark-side powered stage and audience site for bands/DJs/comp MCs
- Euro gap, pump track, flowy transition bowl and section
- Larger area to skate longer distances
- A ramp and some good-sized rails for BMX bikes
- Snake bowl
- The big Lismore log as a rail
- Plenty of lighting for night skating – can include unique designs

Majority of respondents opted for a **Flowy Transition, Street Skate Park and Flowy Street** as their preferred style of park.



Lismore's Cedar Log – a monument to the first cedar cutters, presented to Lismore in 1968.

What else should be included in the precinct?

✓ **Urban Play** – 72.9% in favour

Of 88 responses, **59** people would like to see a 'Mixed Course' included.

✓ **Multi-games courts** – 74% in favour

Of 95 responses, **79** people would like to see a 'Basketball' court included.

✓ **Events** – 93.3% in favour

Of 134 responses, **72** people would like to see Demo's & Competitions, **65** people for Learn to Ride Workshops and **94** people indicating they would like seating designed for spectators.

‘What do you find special or iconic about Lismore that should be considered in the design?’

92 people answered this question. Answers broadly included Lismore icons (rainbows and hearts), art, lighting, Bundjalung culture, monuments, music, and native garden.



The Rainbow walkway in Magellan Street, 2018



‘In The Heart’ public sculpture by local artists Eden Crawford-Harriman and Holly Ahern, 2021

While most feedback was overwhelmingly positive, concerns were also shared and should be noted for future engagement and design.

- ***Maintenance, and the cost of ongoing maintenance*** - The existing Lismore Skatepark was used as a common example for perceived failures of maintenance to infrastructure assets.
- ***Shade*** – common theme, indicated less use if it was too hot or not enough shade coverage. Consider working with Cancer Council for NSW to advise.
- ***Safety and Security*** – regular patrols, security cameras, park misuse and potential trouble making hotspot for youth crime and bullying were highlighted.
- ***Toilets*** – the closest currently are on Dawson Street or Lismore Square. Respondents highlighted that the precinct would need its own facilities.
- ***Parking*** – none planned for directly at the site, added difficulty for accessibility and those with small children.
- ***Curfew*** – proposed it should be enforceable with Police/security patrols.
- ***Beginner/Small Kids Area*** – for safety of all users to participate with confidence.
- ***Ownership by youth*** – projects or workshops to make this space for youth and promote ownership e.g., garden maintenance, art classes to paint murals etc.
- ***Amenities*** – incorporate a coffee shop or have a food van frequent the precinct in peak times, seating areas for spectators.
- ***Road Safety*** - Pedestrian crossing at Dawson and Uralba Street
- ***Accessibility*** – both physically (what equipment/measures are in place to ensure accessibility) and technological (wi-fi added for events, ease of contact).
- ***Grant funding*** – perception money should be spent on immediate community needs such as affordable housing.

Concept Plan Ideas Board

The 41 comments posted followed many of the same themes, with posters providing further detail on their feedback. The below table shows number of comments related to the key words listed.

Shade	10
Events	9
Bowl	8
Climbing	6
Ramp	6
Safety/Security	6
Playground	6
Street style	3
Flood	3
Transition	2

1.3 Social Media comments

Council's Facebook post on 8 December 2021, had 27 comments, 60 reactions, 43 post shares.

The main themes from people's feedback included maintenance of the existing skatepark.

The post two weeks later on 21 December, had less engagement but shared the same theme.

'Fix and improve the skatepark that already exists. Great location by the river, plenty of space.'

'Time for a world class skate facility. Would help attract competitions and people will travel to the area to use it.'

'Lismore (skatepark) is in poor condition. An upgrade would be awesome'

'Definitely in need of upgrade and TLC. My son and I are regulars there and it would be great to see this happen.'

The 1 December, 2022 [post](#) attracted 138 likes, 98 comments and 11 shares.

This post included several concerns from the community regarding the precinct being flood-prone, accessibility, funding and resources is better being directed to housing/flood affected and ongoing maintenance.

'Yeah that is fantastic news for our kids young and old'

'That is nice, but I am surprised that this is a priority before housing the flood victims!'

'PLEASE could we have a park that is Accessible and Inclusive for the whole community.'

'whatever it is can you please make sure it can be easily washed out'

The [6 September Facebook post](#) advertising the workshops, received 315 likes, 160 comments and 62 shares. Many positive comments for involving the community in the design. Similar to other posts, in raising the same concerns of flood, shade, misuse/antisocial behaviour, safety and additional amenities.

'This will be so good for young people, great idea.'

'Awesome!!! Hopefully easy flood clean up is considered too'

'Is the graffiti missing from the design'

'Keep the low skill stuff for beginners sakes'

[September 11 Facebook post](#) received 101 likes, 23 comments and 19 shares.

2. Next steps

Identifying the gaps:

What user groups weren't identified?

Youth and Indigenous organisations have provided conversational feedback. Future engagement activities that capture this feedback constructively will be considered, such as targeted workshops and accessible surveys.

Some of the anecdotal feedback on design included:

- A yarnning circle
- Outdoor amphitheatre for creative arts and events
- Weekly, if not daily workshops held onsite for youth to join
- Graffiti wall (also to be used for art workshops)
- Project Group, involving youth members to help maintain the precinct in turn providing a sense of ownership
- A BBQ with picnic area
- Accessible power sources

A stakeholder map has been created to capture all potential user groups including accessibility, youth, Indigenous, sporting and government organisations that would like to inform the design.

What do the Youth want?

Majority of survey respondents were 23 – 50. Engagement activities that cater to specific ages should be included in future engagement. Such as short online surveys, hands on presentation at youth events, elected youth representatives to consult with directly.

Do we need wider community input?

Only 143 responses were provided to the online survey. Consider this is a very small snapshot of the wider Lismore community, with majority of respondents identified as being involved in skate type activities. Being this is also a 'Youth Precinct' consider engagement activities that reach other potential users such as parent groups, youth arts groups and additional sporting groups.

What happens next?

Community is curious about the construction phase, proposed dates and how this will be managed. Being the location is an entry point to the CBD, questions are being raised about traffic plans, if local businesses will be impacted and changes for pedestrians across busy intersections.

Future community engagement:

Additional engagement activities should be considered to involve a wider input outside of the skate community, including organisations and youth in general.

Proposed Risk Workshop in October, with local organisation contacts.

This workshop will discuss *usage* of the precinct, identifying potential risks affecting youth and proposing solutions. The overarching outcome of this activity is to identify precinct ownership and guardianship initiatives. For example, weekly youth workshops, used as an event space for performing arts, potential future space for a youth centre.

Youth Survey in November to decide on some final design elements.

In identifying that youth need a larger voice in this engagement, conversations with schoolteachers and youth organisations have shown that a short survey (less than 3 minutes) where students can select 'A' or 'B' on a selection of images is the most effective way of getting feedback. This method is accessible, easy to collect data and can be completed in conjunction with school activities.

Formalise Project Working Group

As part of the engagement registration, some individuals indicated they would like to be considered as part of the project working group. An unofficial working group is already in place, with skate community contacts from early in the engagement who were integral to the funding concept design. These contacts have been speaking with Steph Pym directly, with most opting to stay in touch.

Decisions on members for the working group will be based on ensuring the community is widely represented from elected members.