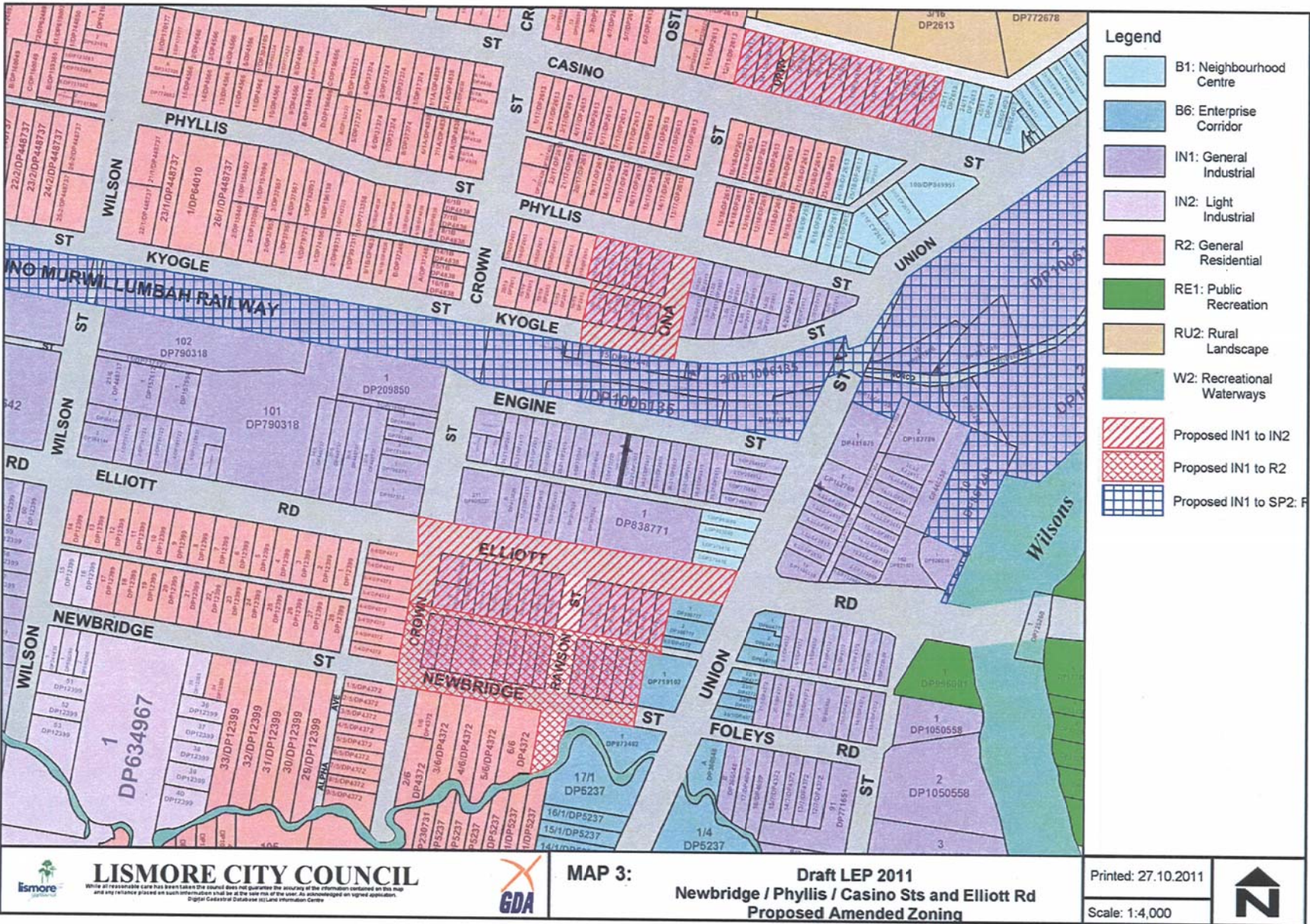
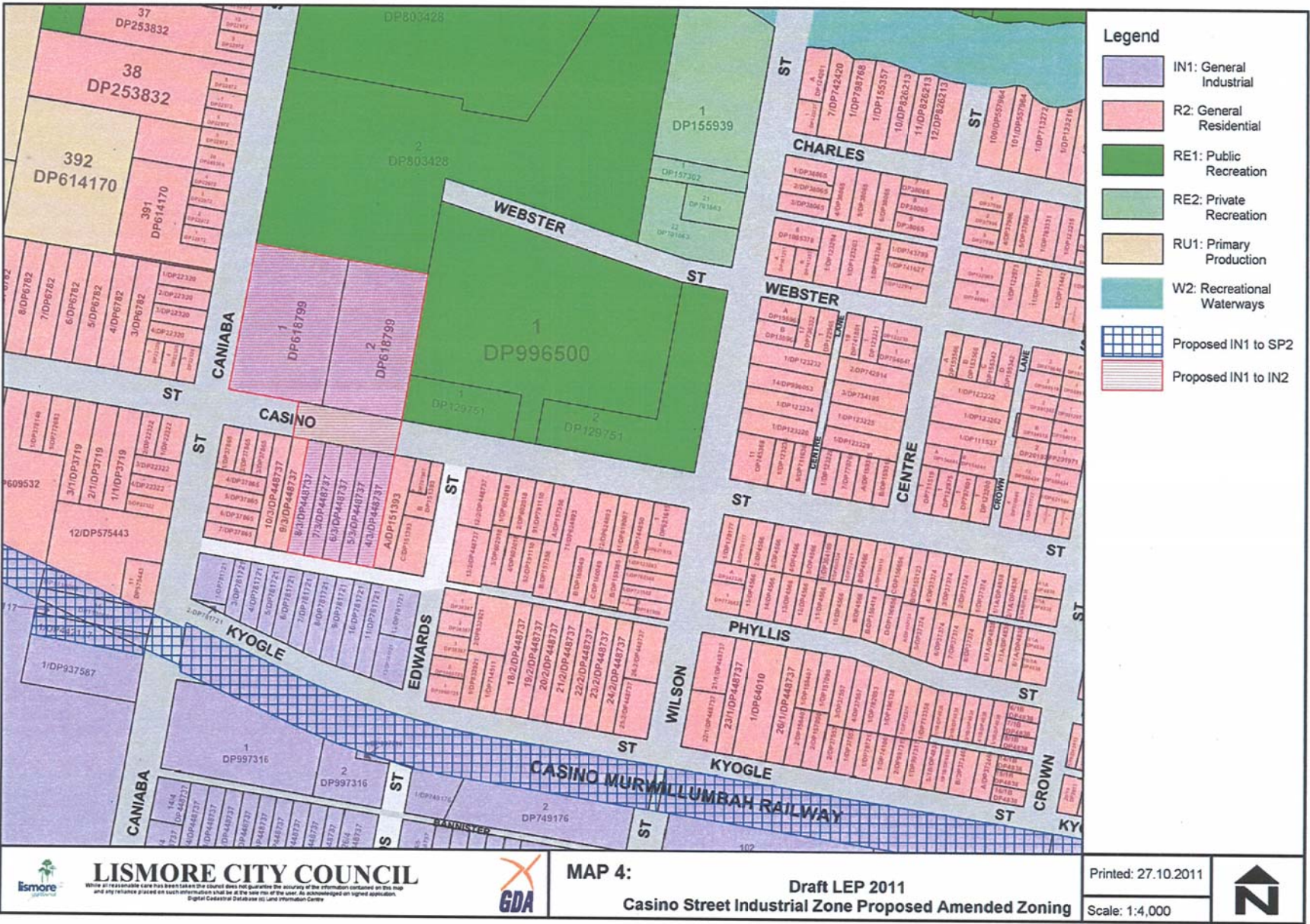


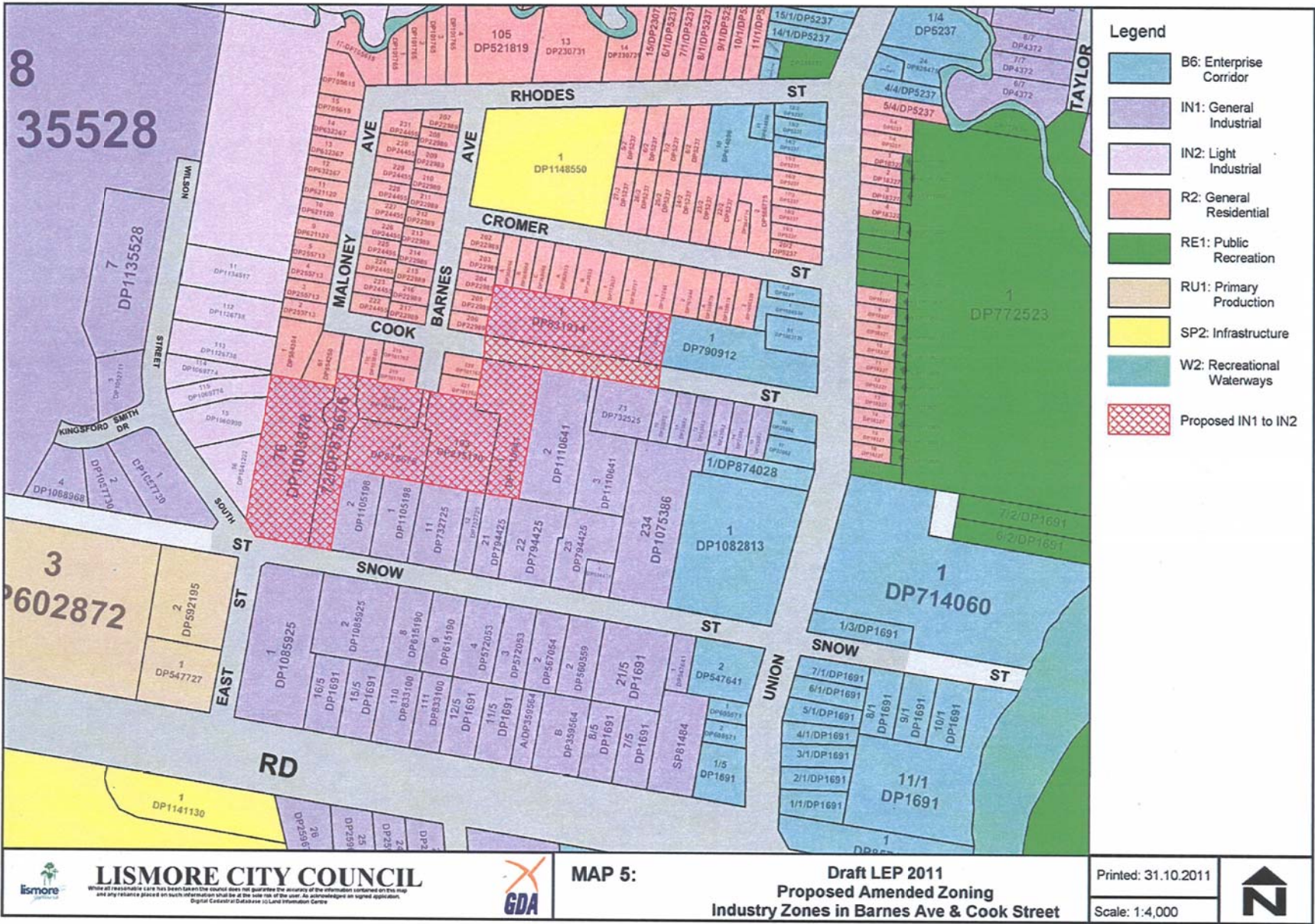
Lismore City Council
 Meeting held 10 November 2011 - Lismore Draft Local Environmental Plan
 2010 - Recommended Amendments and Re-Exhibition (the balance of the
 subjects)



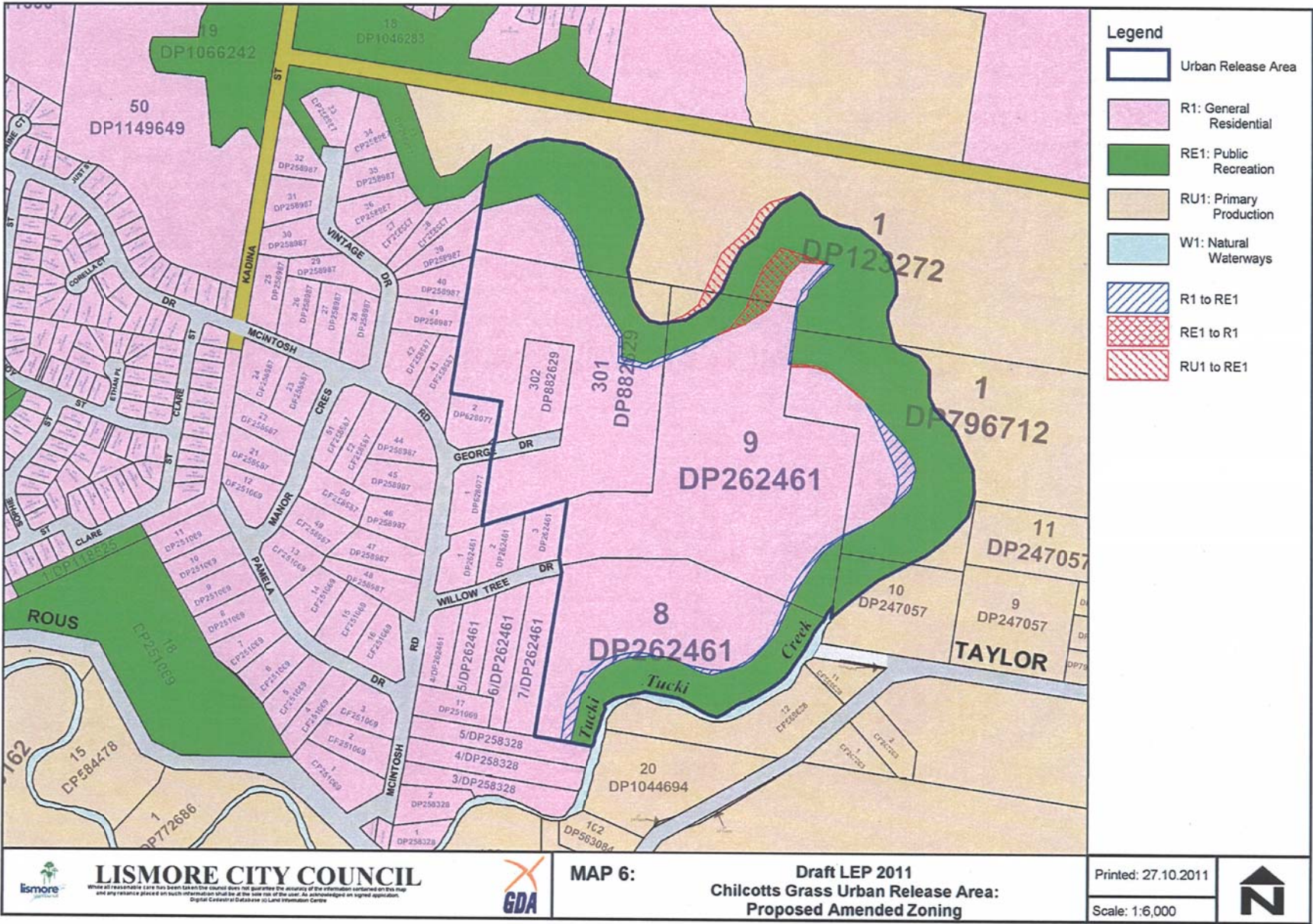
Lismore City Council
 Meeting held 10 November 2011 - Lismore Draft Local Environmental Plan
 2010 - Recommended Amendments and Re-Exhibition (the balance of the
 subjects)



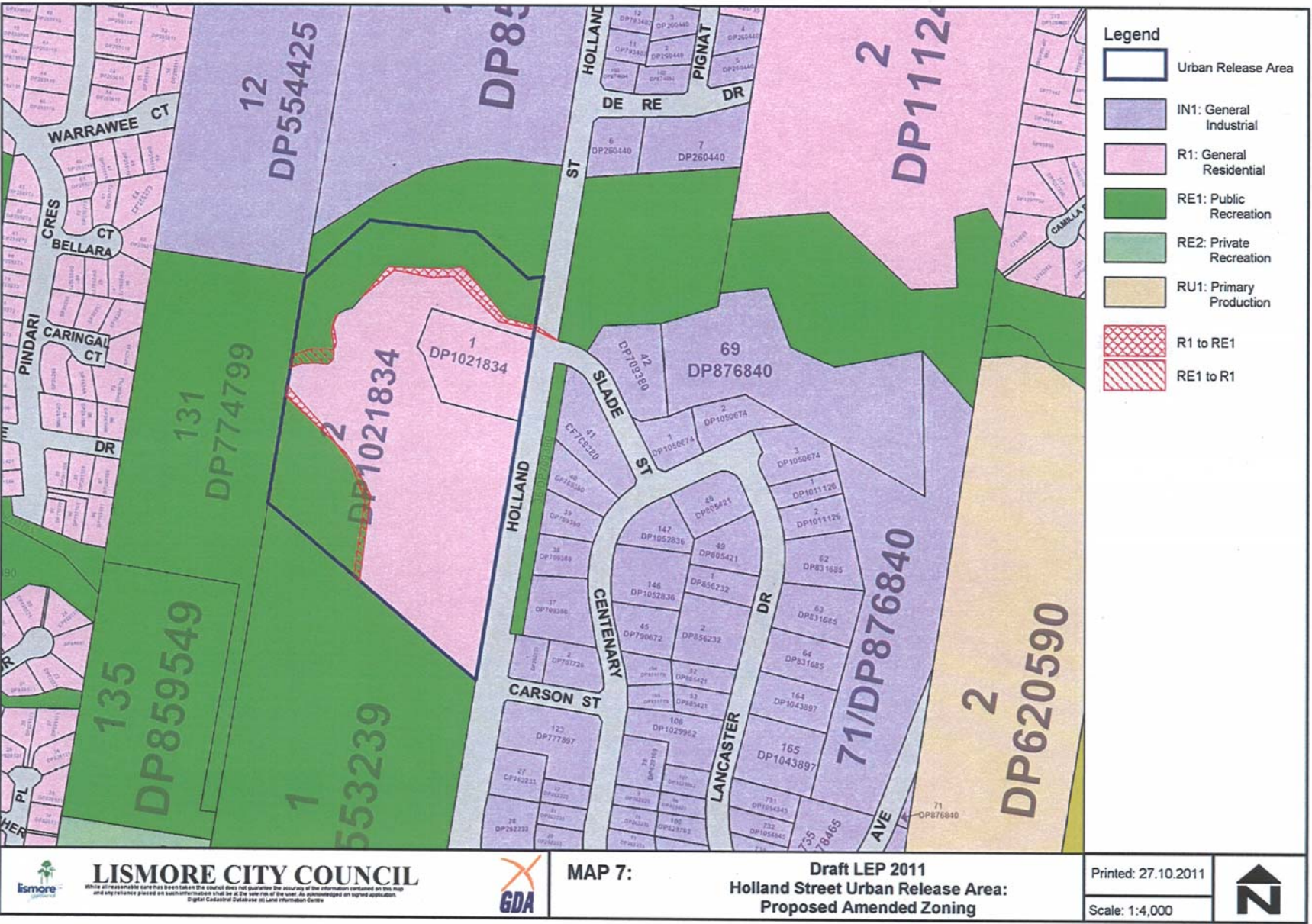
Lismore City Council
 Meeting held 10 November 2011 - Lismore Draft Local Environmental Plan
 2010 - Recommended Amendments and Re-Exhibition (the balance of the
 subjects)



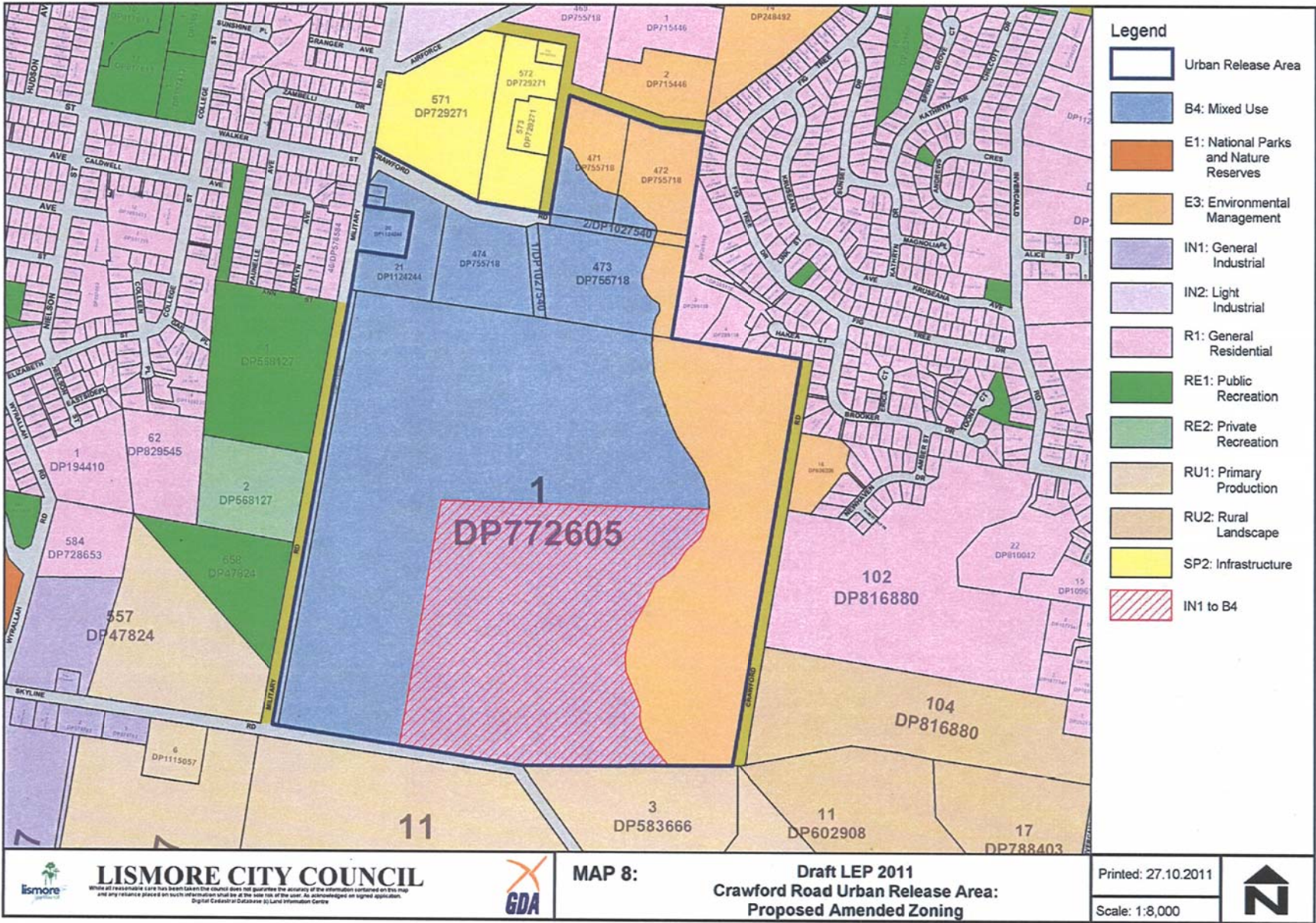
Lismore City Council
 Meeting held 10 November 2011 - Lismore Draft Local Environmental Plan
 2010 - Recommended Amendments and Re-Exhibition (the balance of the
 subjects)



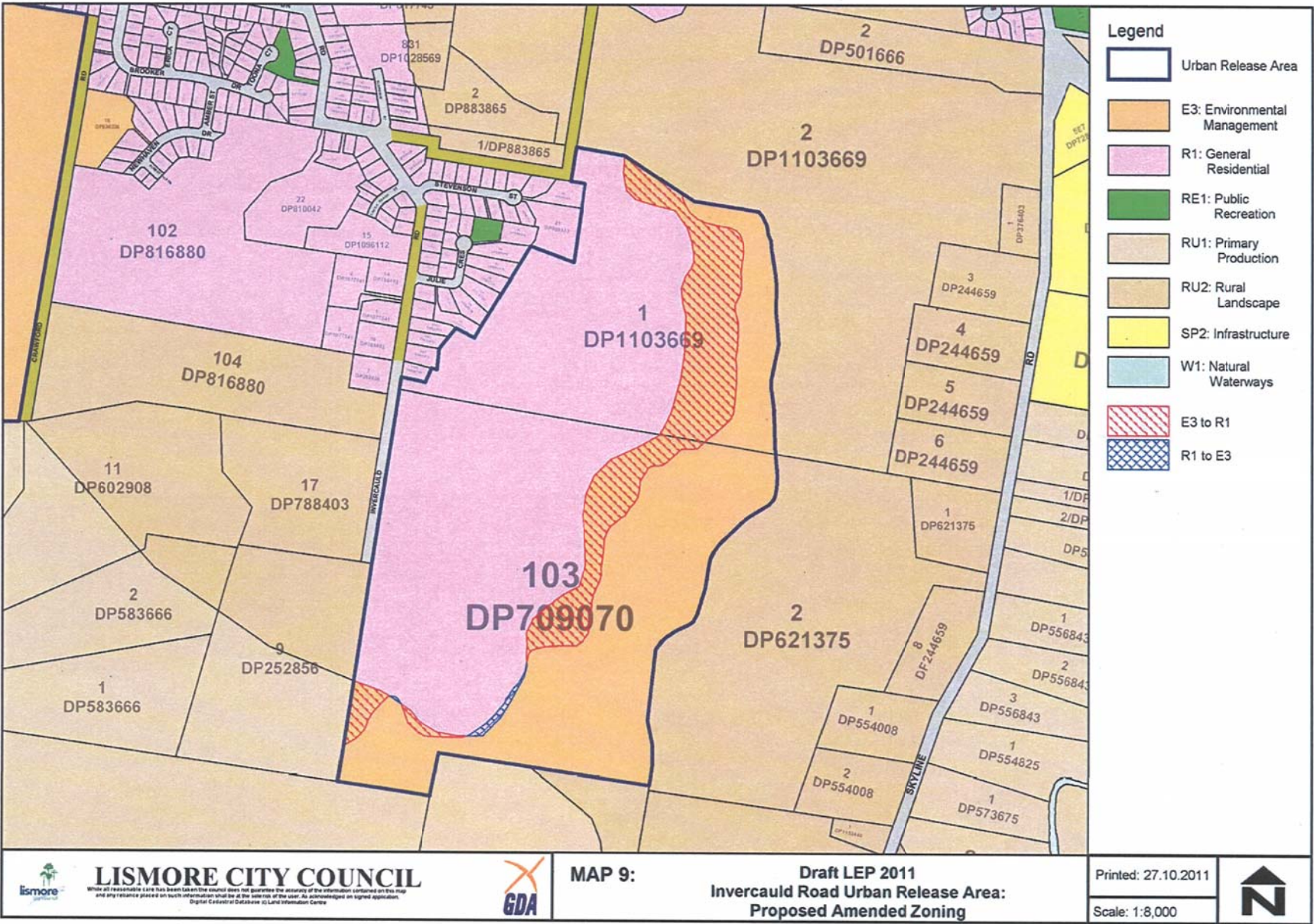
Lismore City Council
 Meeting held 10 November 2011 - Lismore Draft Local Environmental Plan
 2010 - Recommended Amendments and Re-Exhibition (the balance of the
 subjects)



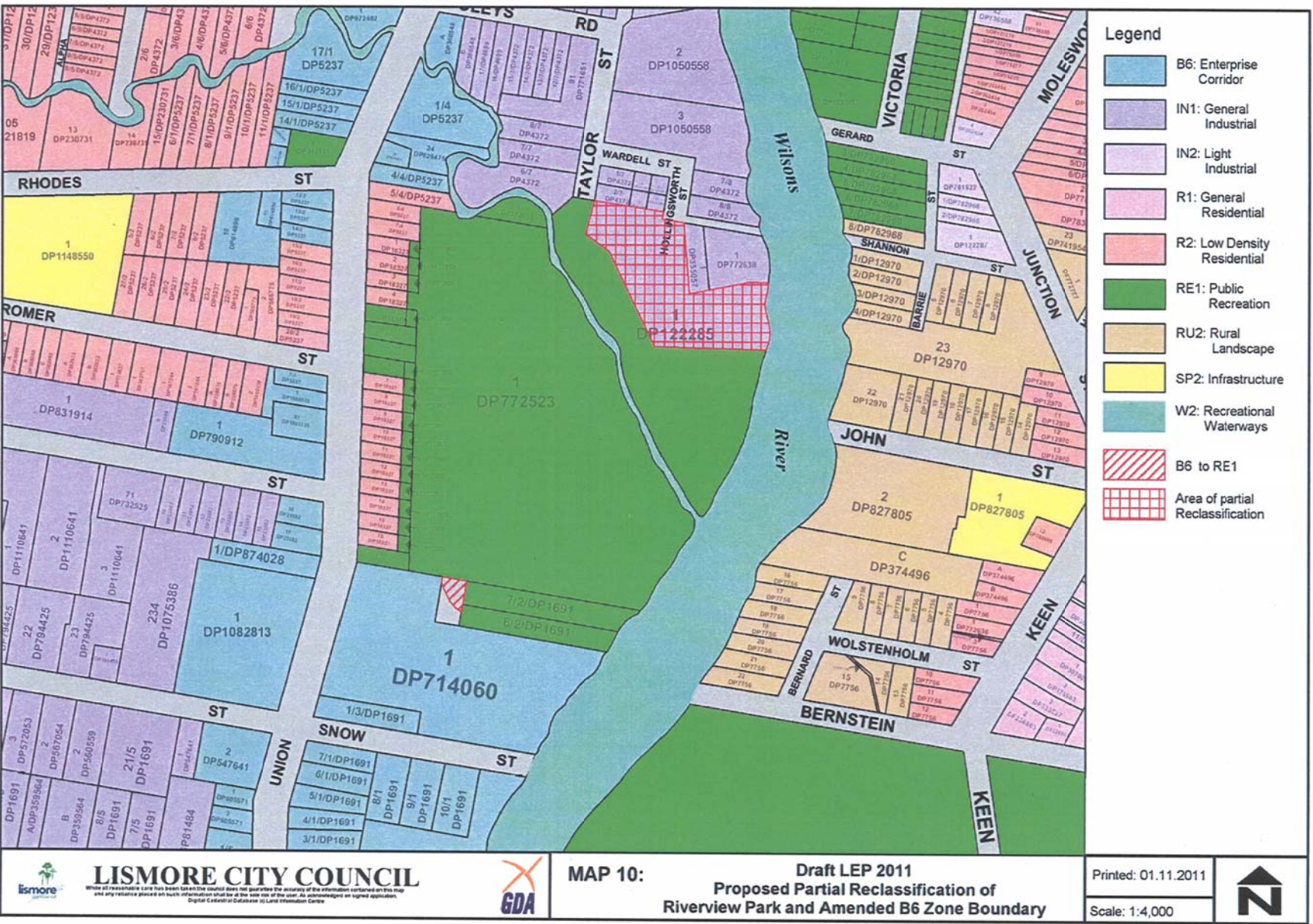
Lismore City Council
 Meeting held 10 November 2011 - Lismore Draft Local Environmental Plan
 2010 - Recommended Amendments and Re-Exhibition (the balance of the
 subjects)



Lismore City Council
 Meeting held 10 November 2011 - Lismore Draft Local Environmental Plan
 2010 - Recommended Amendments and Re-Exhibition (the balance of the
 subjects)



Lismore City Council
 Meeting held 10 November 2011 - Lismore Draft Local Environmental Plan
 2010 - Recommended Amendments and Re-Exhibition (the balance of the
 subjects)



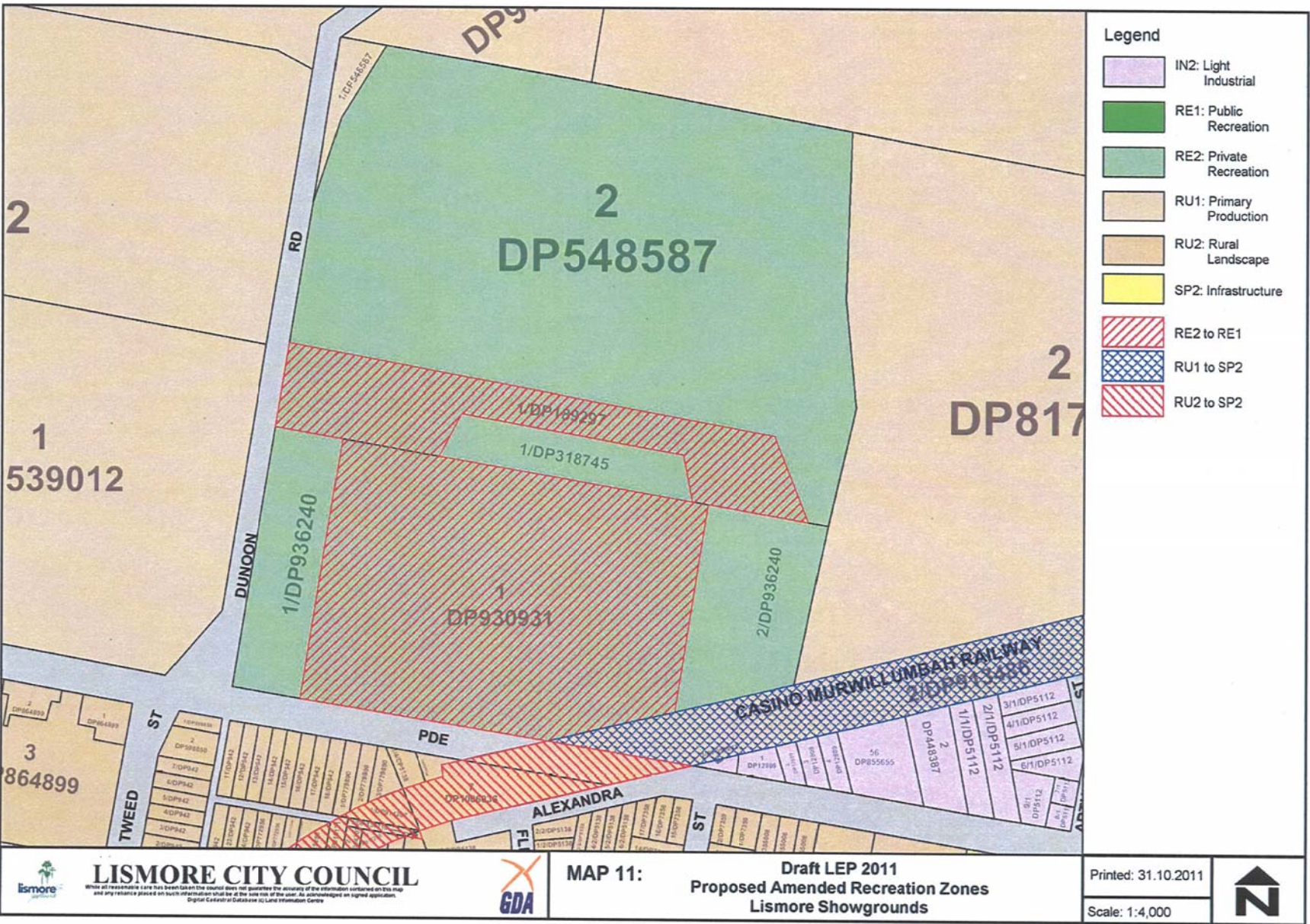
LISMORE CITY COUNCIL
While all reasonable care has been taken the Council does not guarantee the accuracy of the information contained on this map and any reliance placed on such information shall be at the sole risk of the user. An acknowledgment on signed application. Digital Cadastre Database (© Lismore Information Centre)

GDA

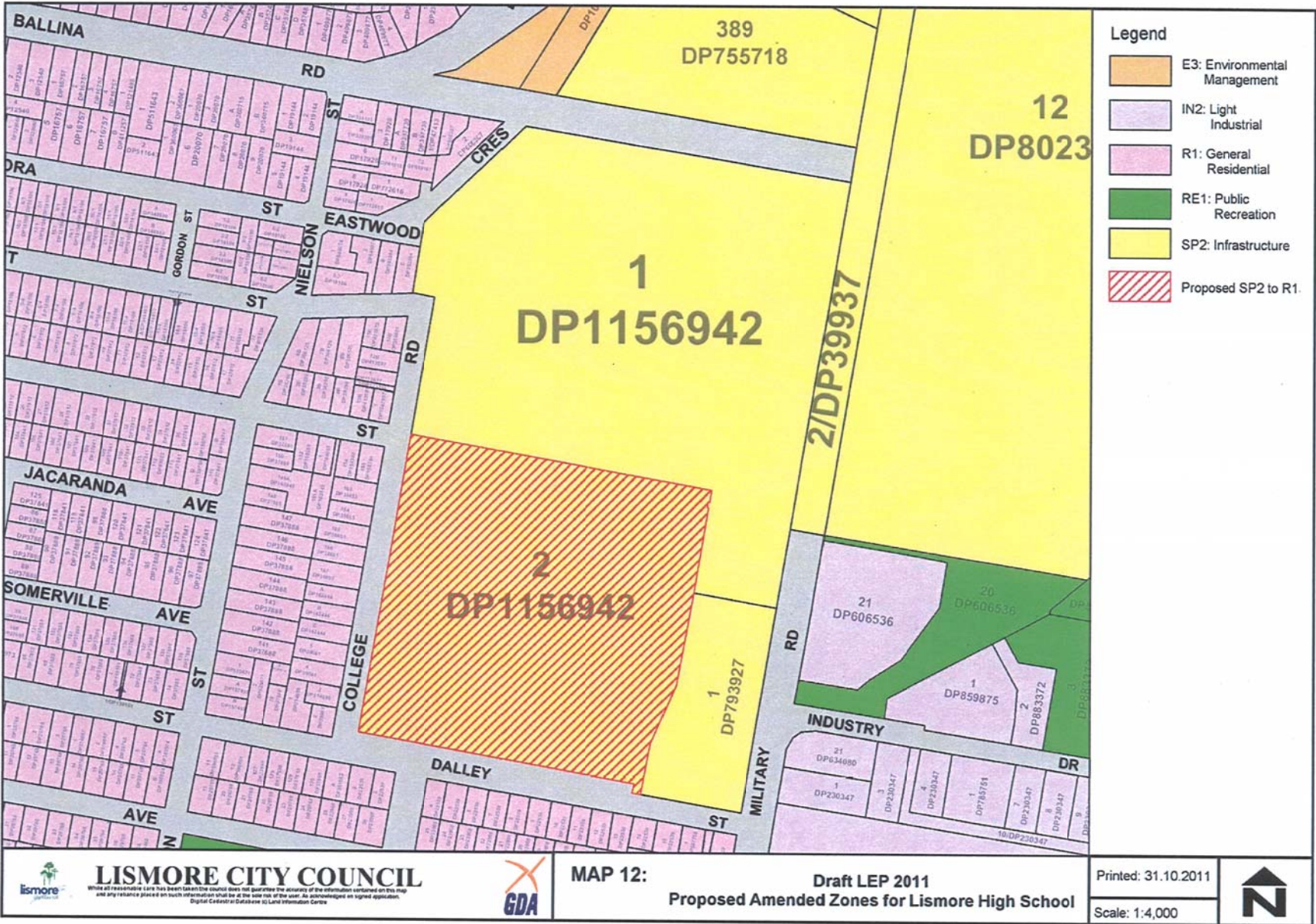
MAP 10: Draft LEP 2011
Proposed Partial Reclassification of Riverview Park and Amended B6 Zone Boundary

Printed: 01.11.2011
 Scale: 1:4,000

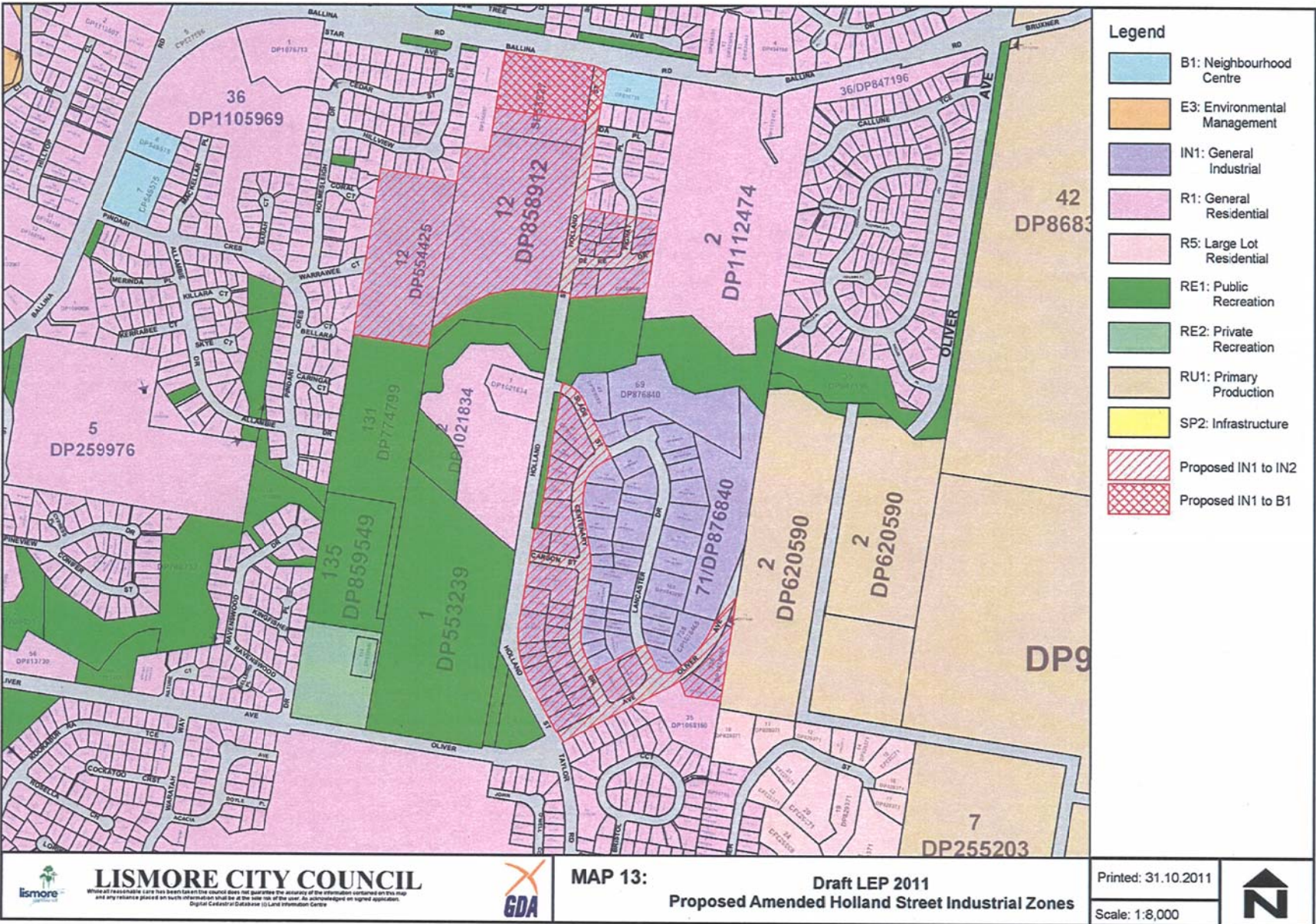
Lismore City Council
 Meeting held 10 November 2011 - Lismore Draft Local Environmental Plan
 2010 - Recommended Amendments and Re-Exhibition (the balance of the
 subjects)



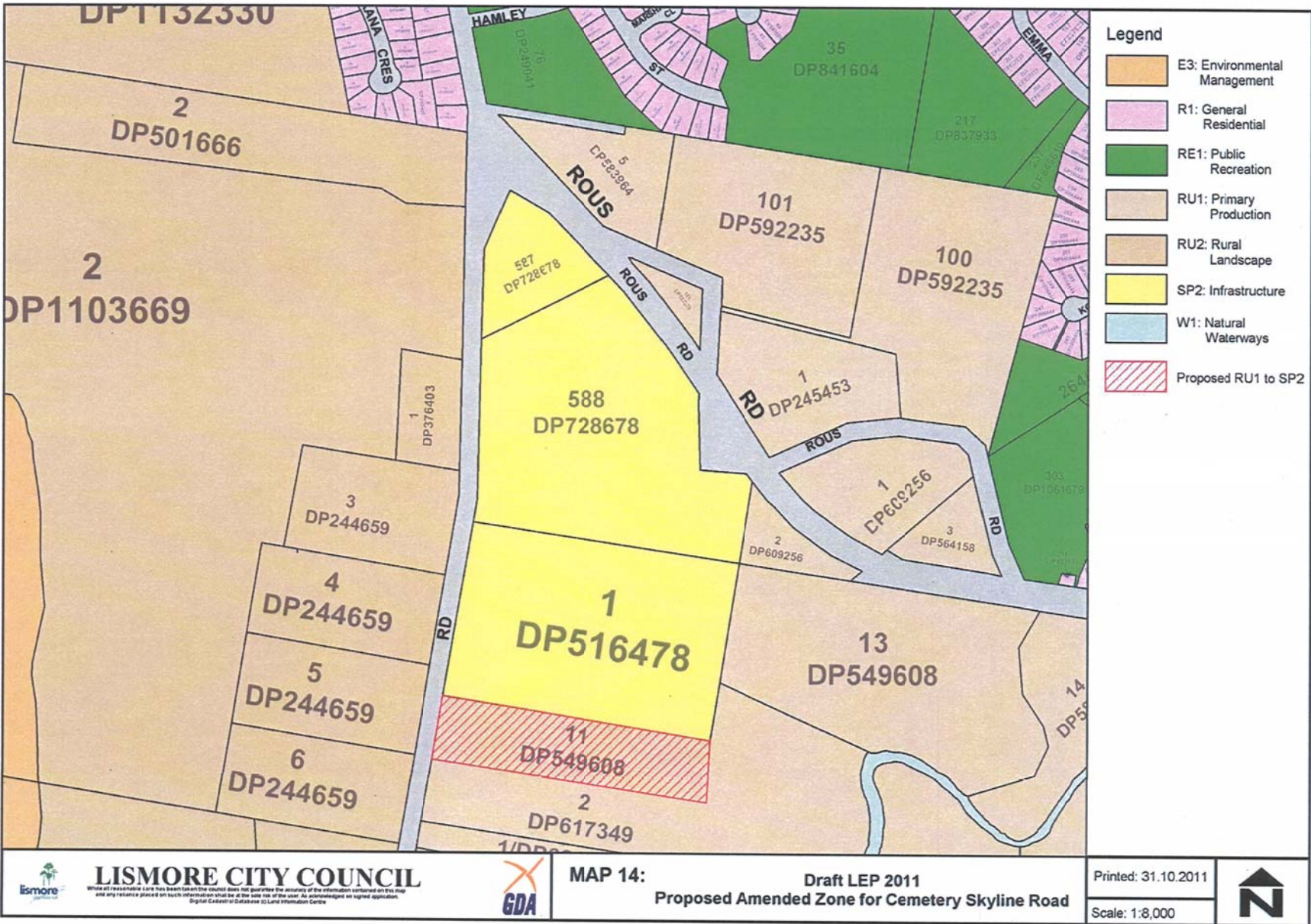
Lismore City Council
Meeting held 10 November 2011 - Lismore Draft Local Environmental Plan
2010 - Recommended Amendments and Re-Exhibition (the balance of the
subjects)



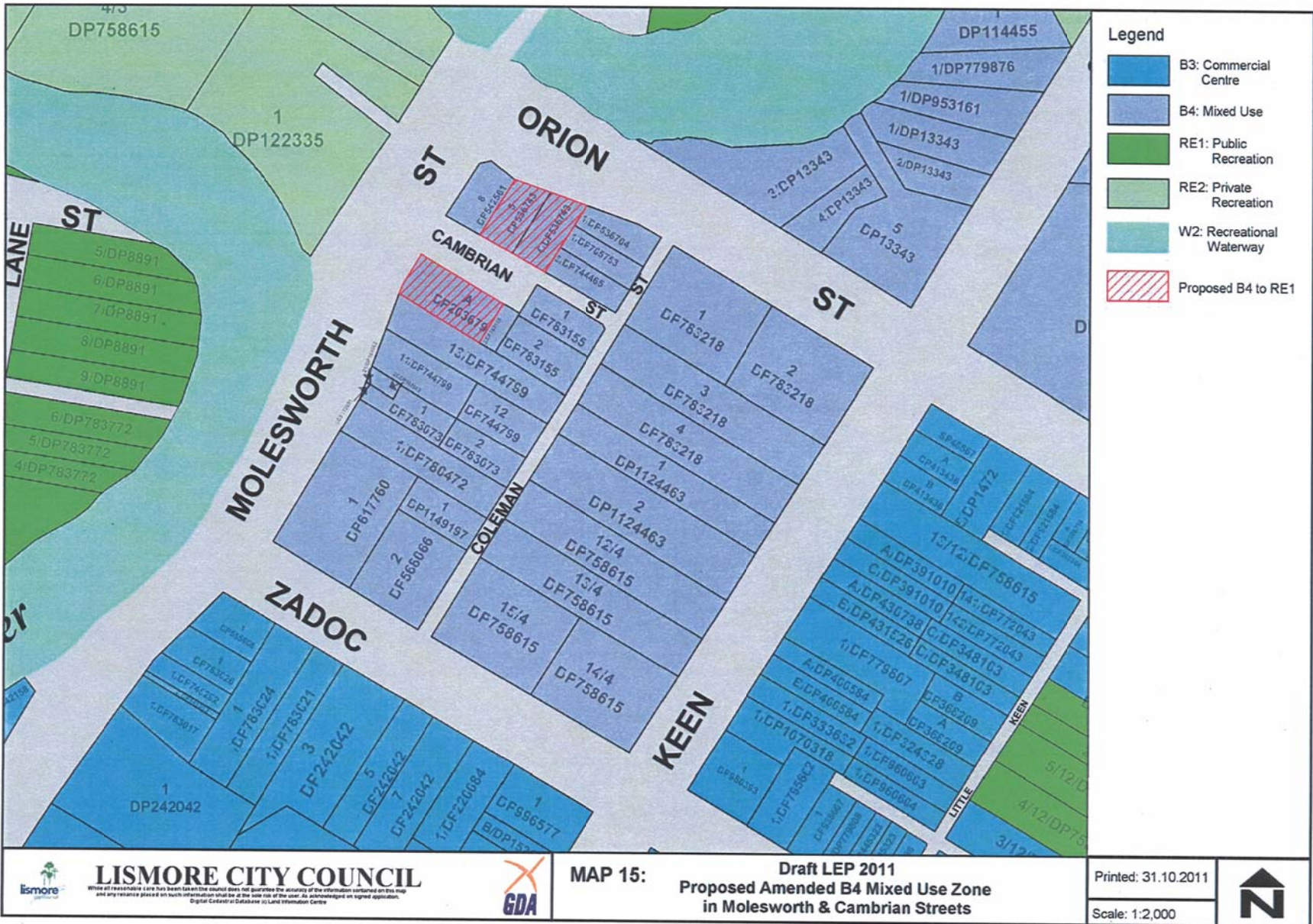
Lismore City Council
 Meeting held 10 November 2011 - Lismore Draft Local Environmental Plan
 2010 - Recommended Amendments and Re-Exhibition (the balance of the
 subjects)



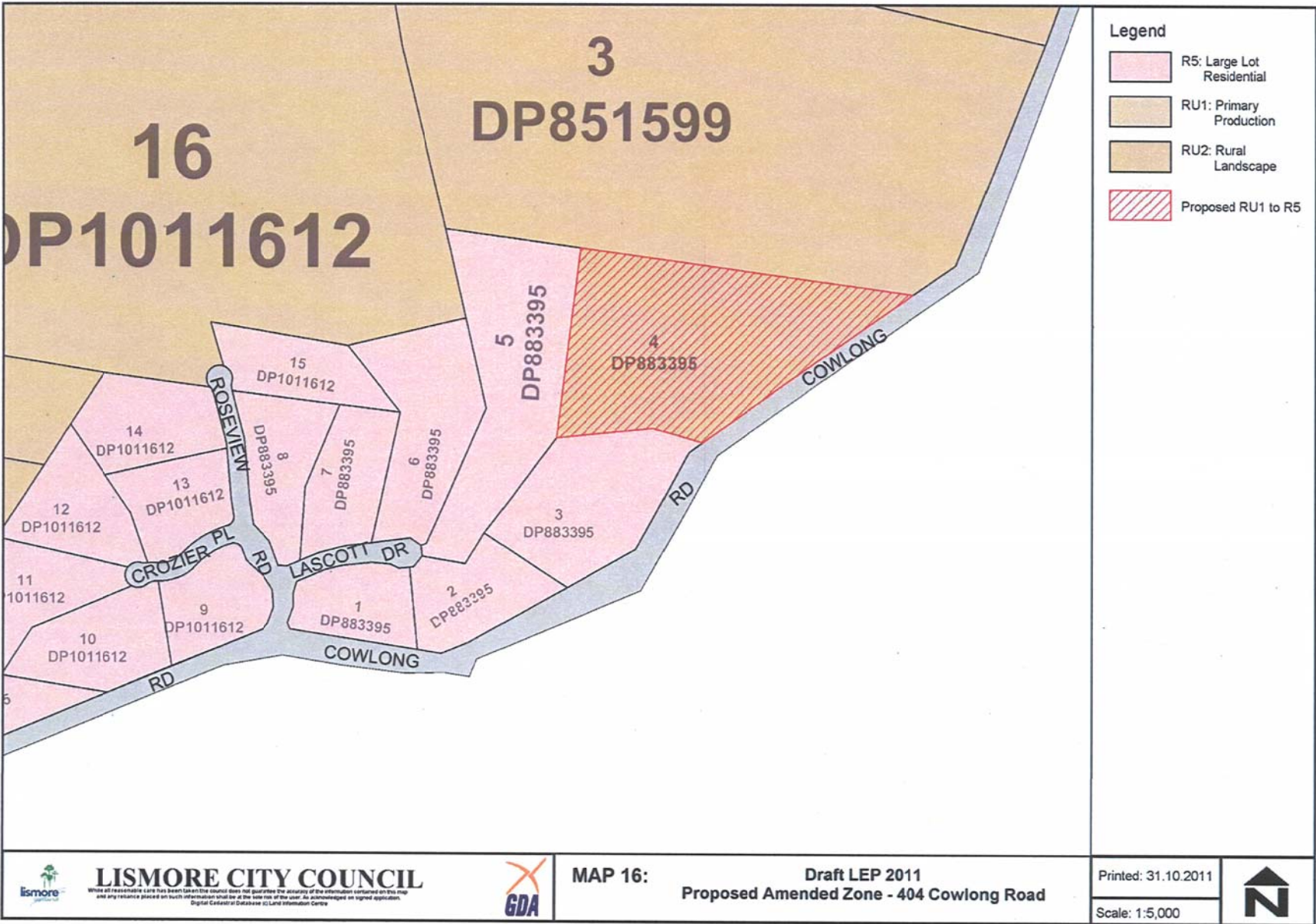
Lismore City Council
 Meeting held 10 November 2011 - Lismore Draft Local Environmental Plan
 2010 - Recommended Amendments and Re-Exhibition (the balance of the
 subjects)



Lismore City Council
 Meeting held 10 November 2011 - Lismore Draft Local Environmental Plan
 2010 - Recommended Amendments and Re-Exhibition (the balance of the
 subjects)



Lismore City Council
Meeting held 10 November 2011 - Lismore Draft Local Environmental Plan
2010 - Recommended Amendments and Re-Exhibition (the balance of the
subjects)



LISMORE CITY COUNCIL

While all reasonable care has been taken the council does not guarantee the accuracy of the information contained on this map and any reliance placed on such information shall be at the sole risk of the user. An acknowledgment on signed application. Digital Cadastral Database © Lismore Information Centre



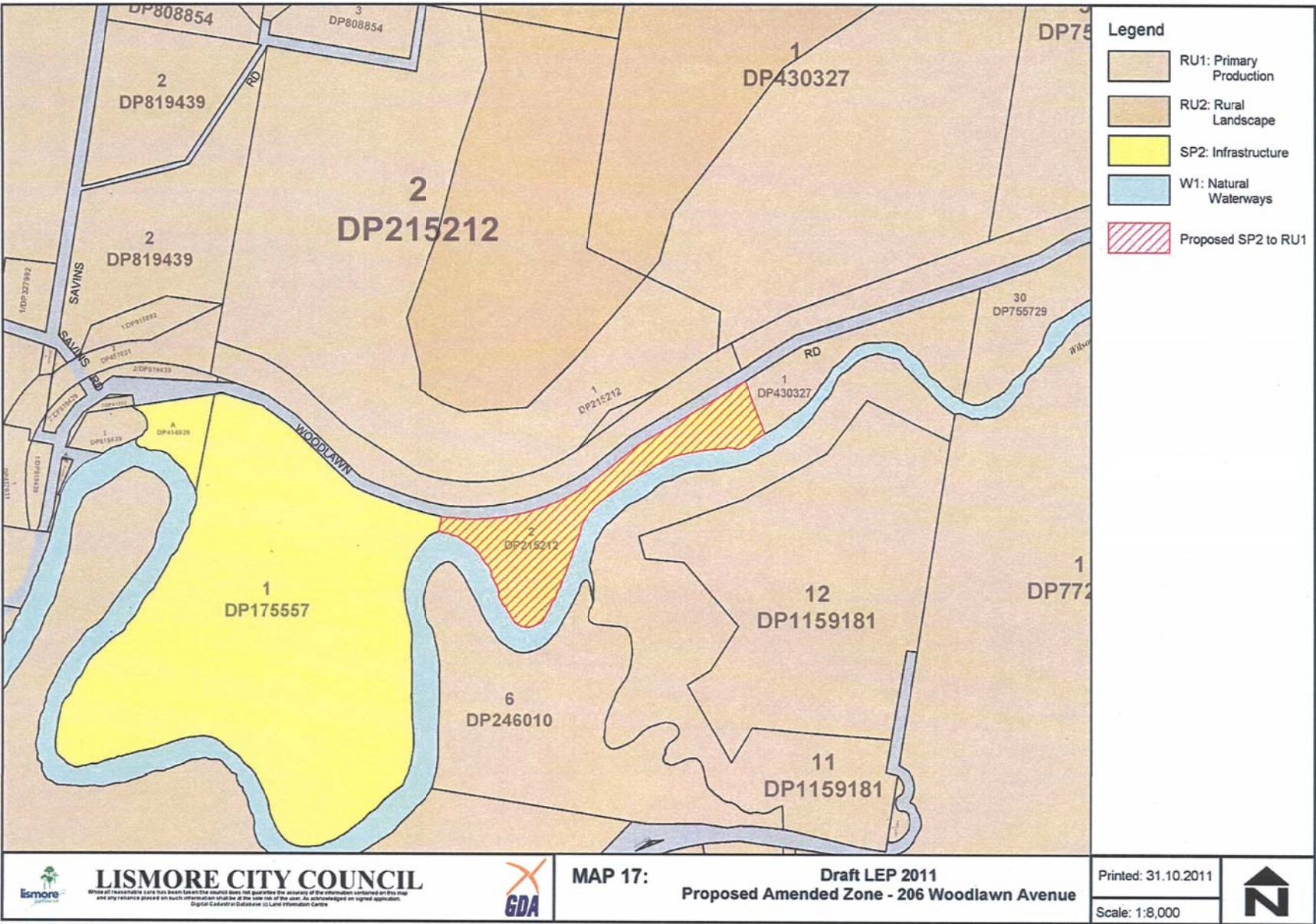
MAP 16:

Draft LEP 2011
Proposed Amended Zone - 404 Cowlong Road

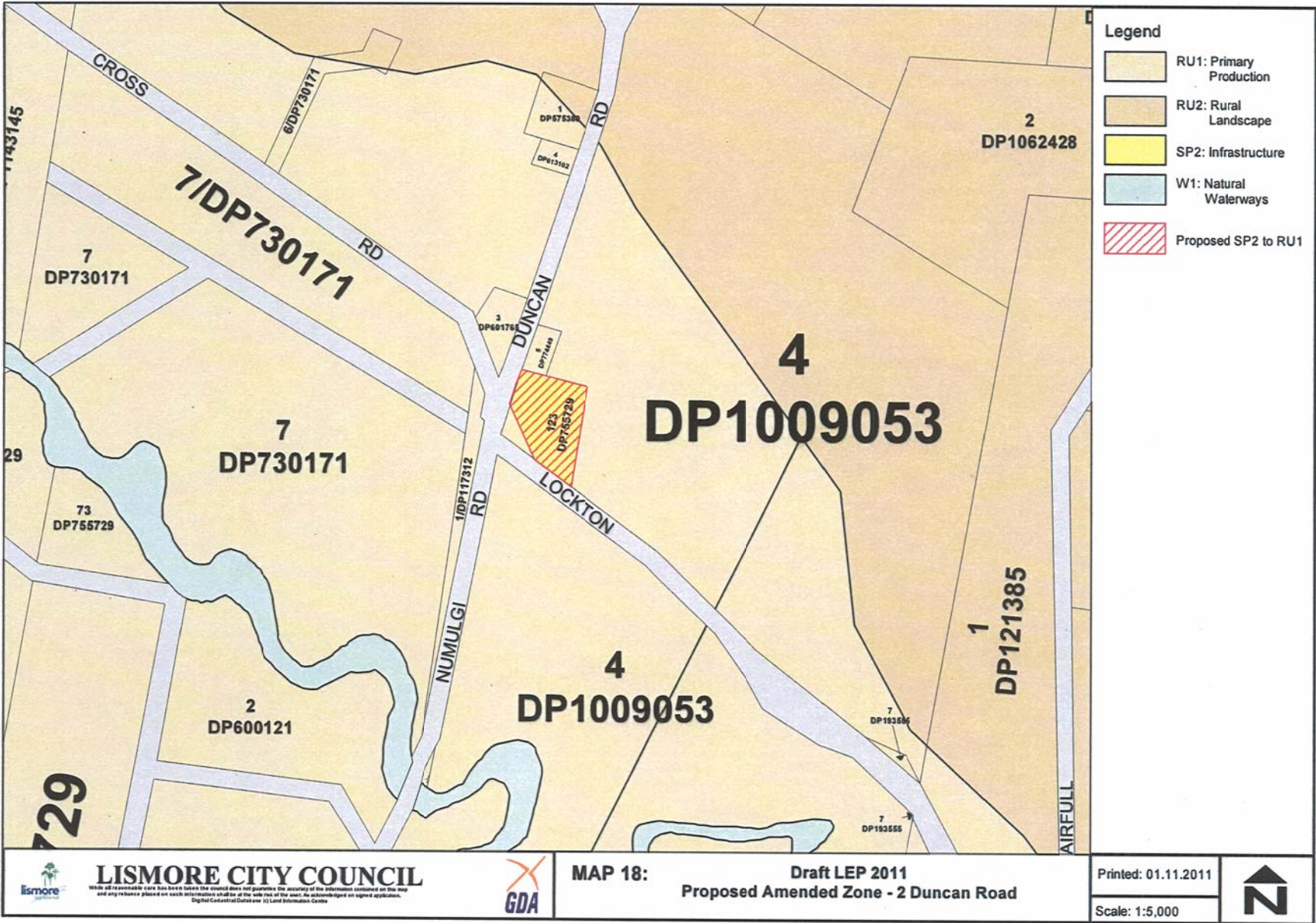


Printed: 31.10.2011

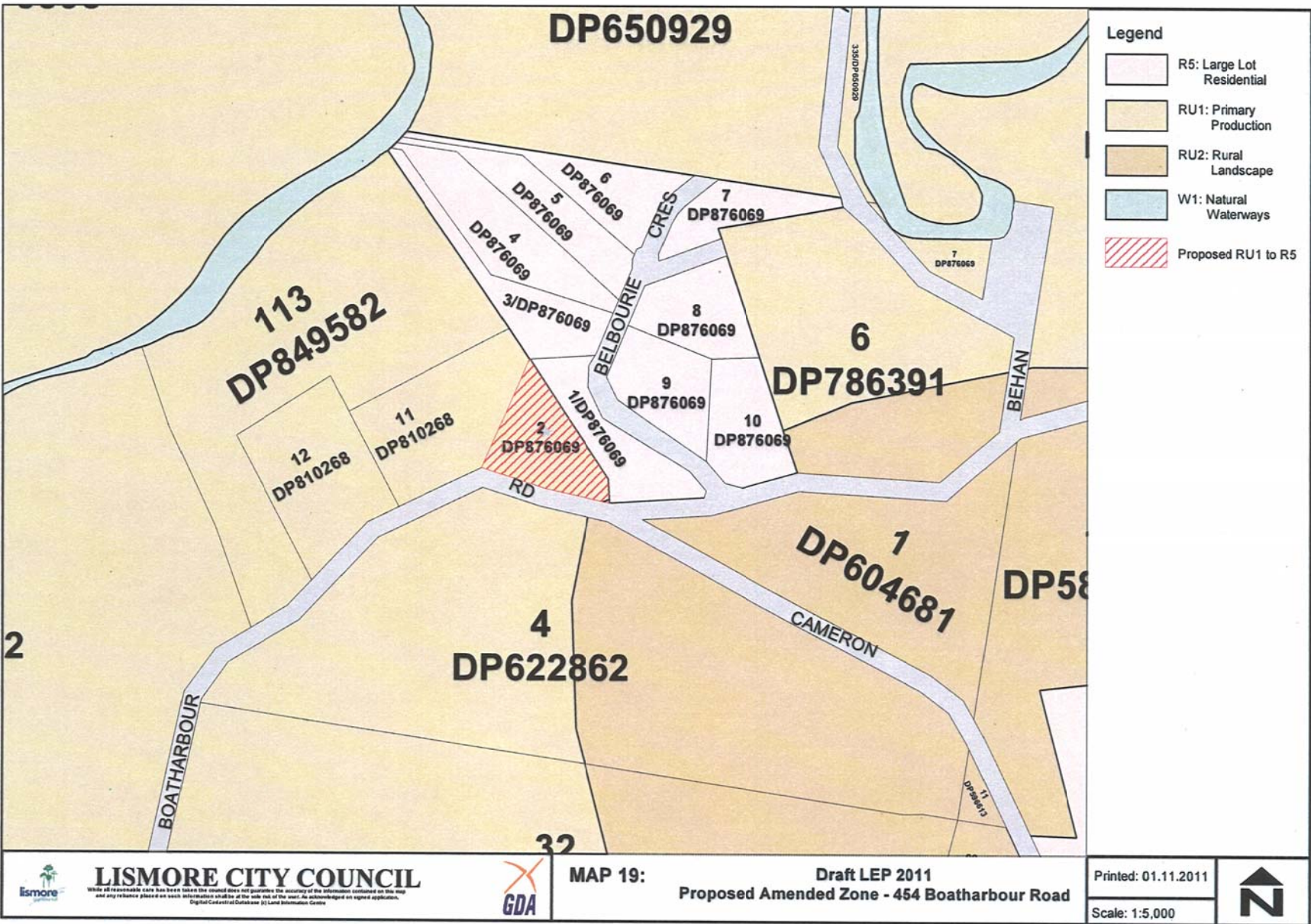
Scale: 1:5,000



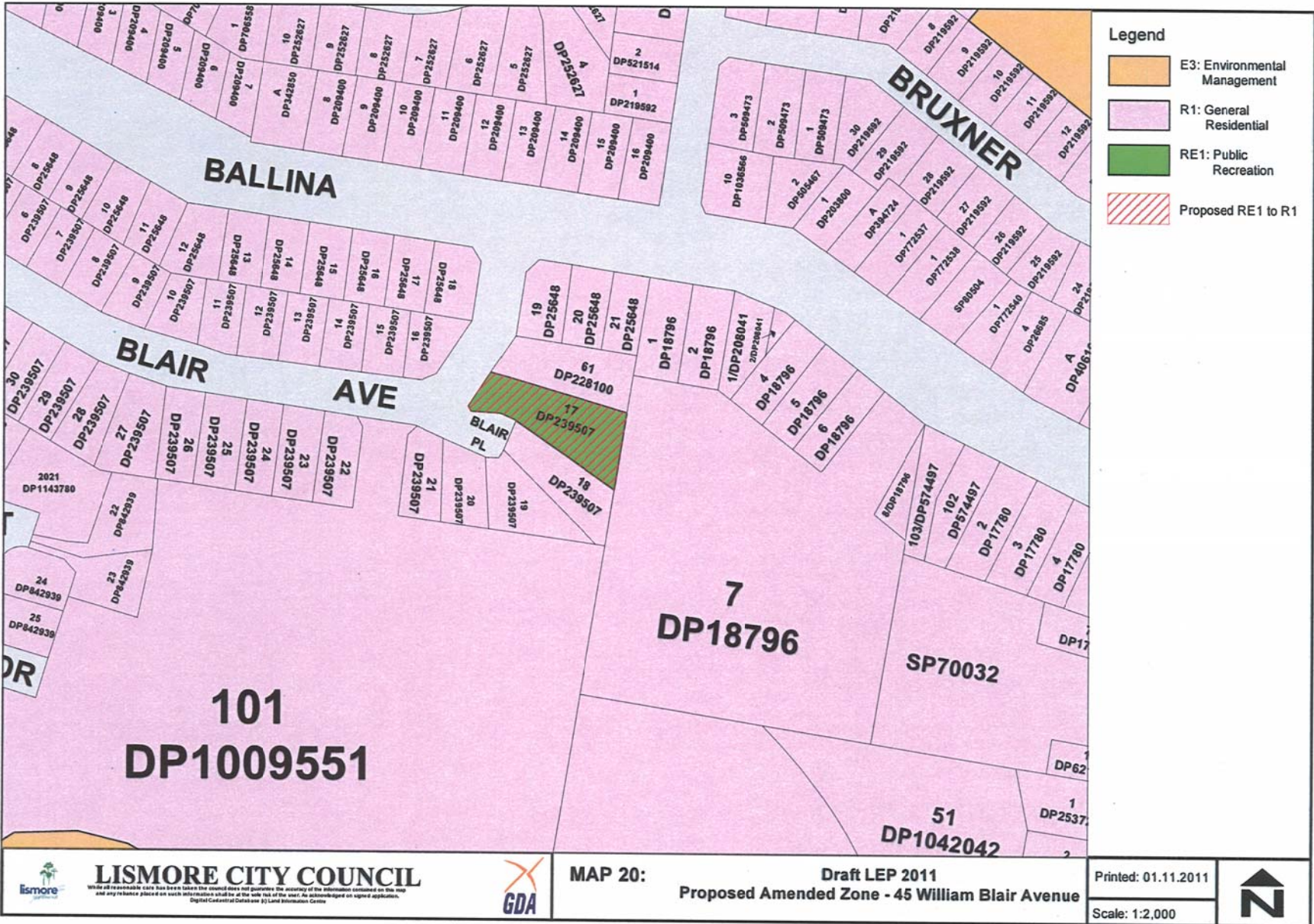
Lismore City Council
 Meeting held 10 November 2011 - Lismore Draft Local Environmental Plan
 2010 - Recommended Amendments and Re-Exhibition (the balance of the
 subjects)



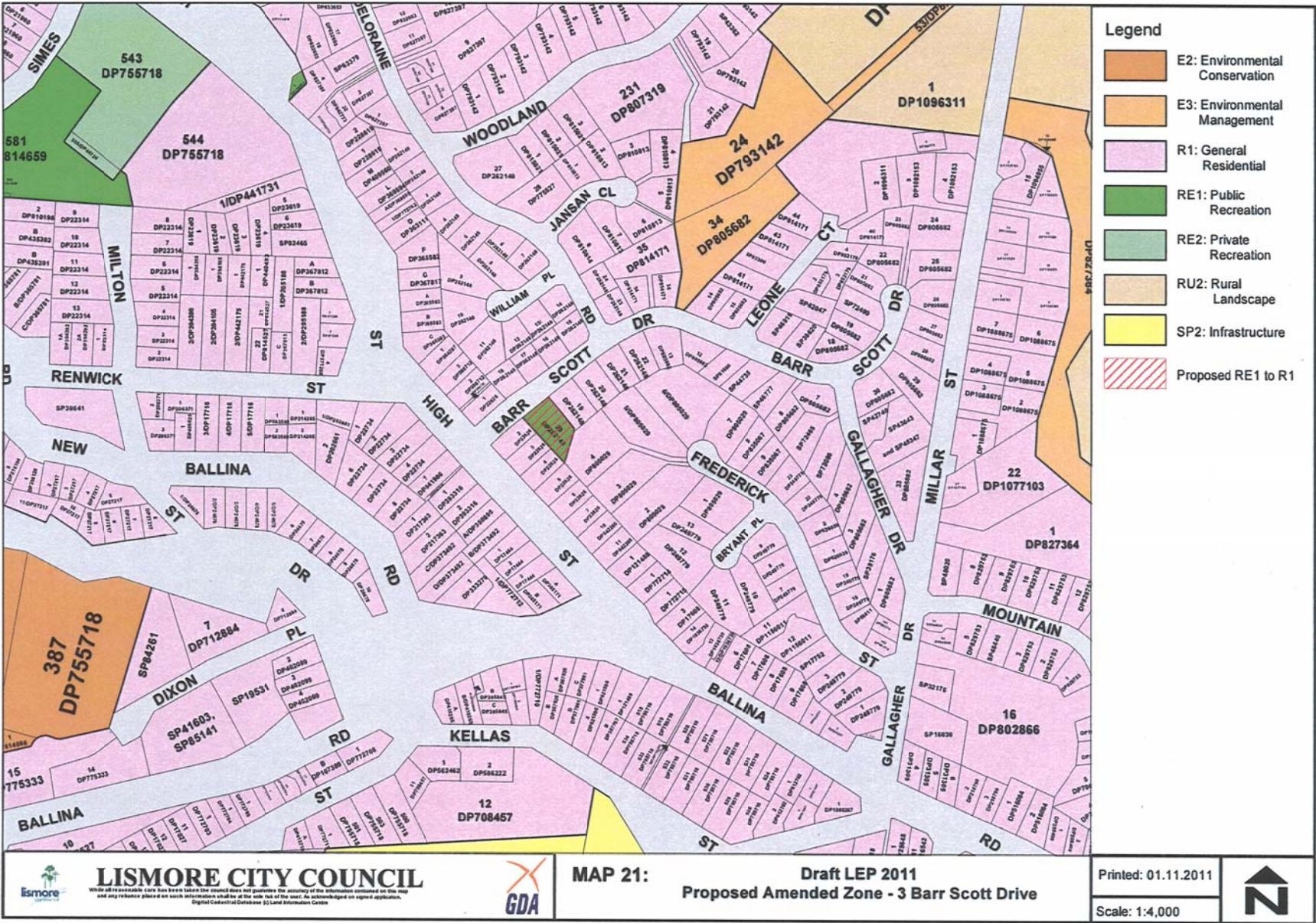
Lismore City Council
 Meeting held 10 November 2011 - Lismore Draft Local Environmental Plan
 2010 - Recommended Amendments and Re-Exhibition (the balance of the
 subjects)



Lismore City Council
Meeting held 10 November 2011 - Lismore Draft Local Environmental Plan
2010 - Recommended Amendments and Re-Exhibition (the balance of the
subjects)

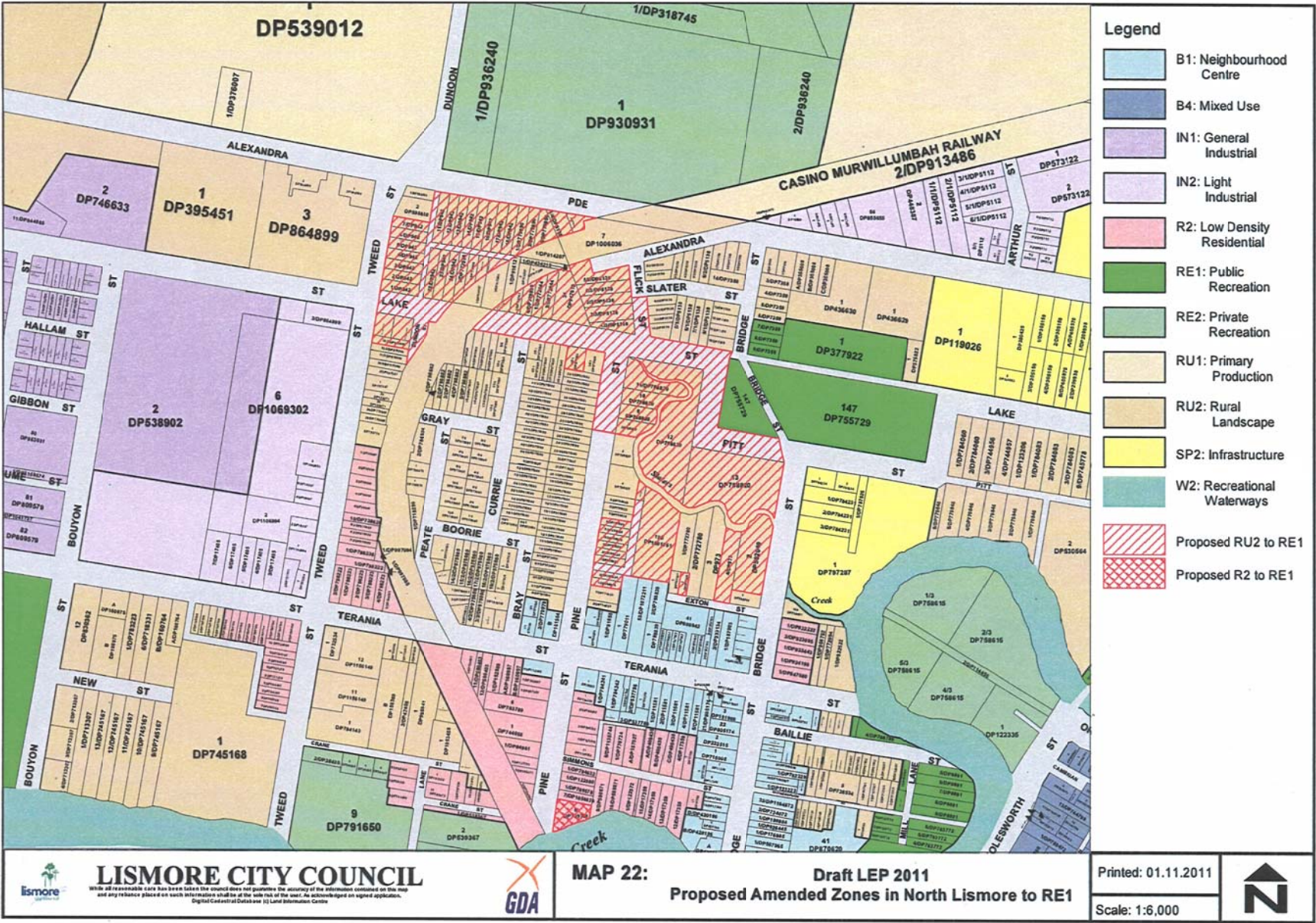


Lismore City Council
 Meeting held 10 November 2011 - Lismore Draft Local Environmental Plan
 2010 - Recommended Amendments and Re-Exhibition (the balance of the
 subjects)



Lismore City Council

Meeting held 10 November 2011 - Lismore Draft Local Environmental Plan 2010 - Recommended Amendments and Re-Exhibition (the balance of the subjects)



LISMORE CITY COUNCIL
While all reasonable care has been taken the council does not guarantee the accuracy of the information contained on this map and any reliance placed on such information shall be at the sole risk of the user. An acknowledgment on signed application. Digital Cadastral Database (C) Land Information Centre

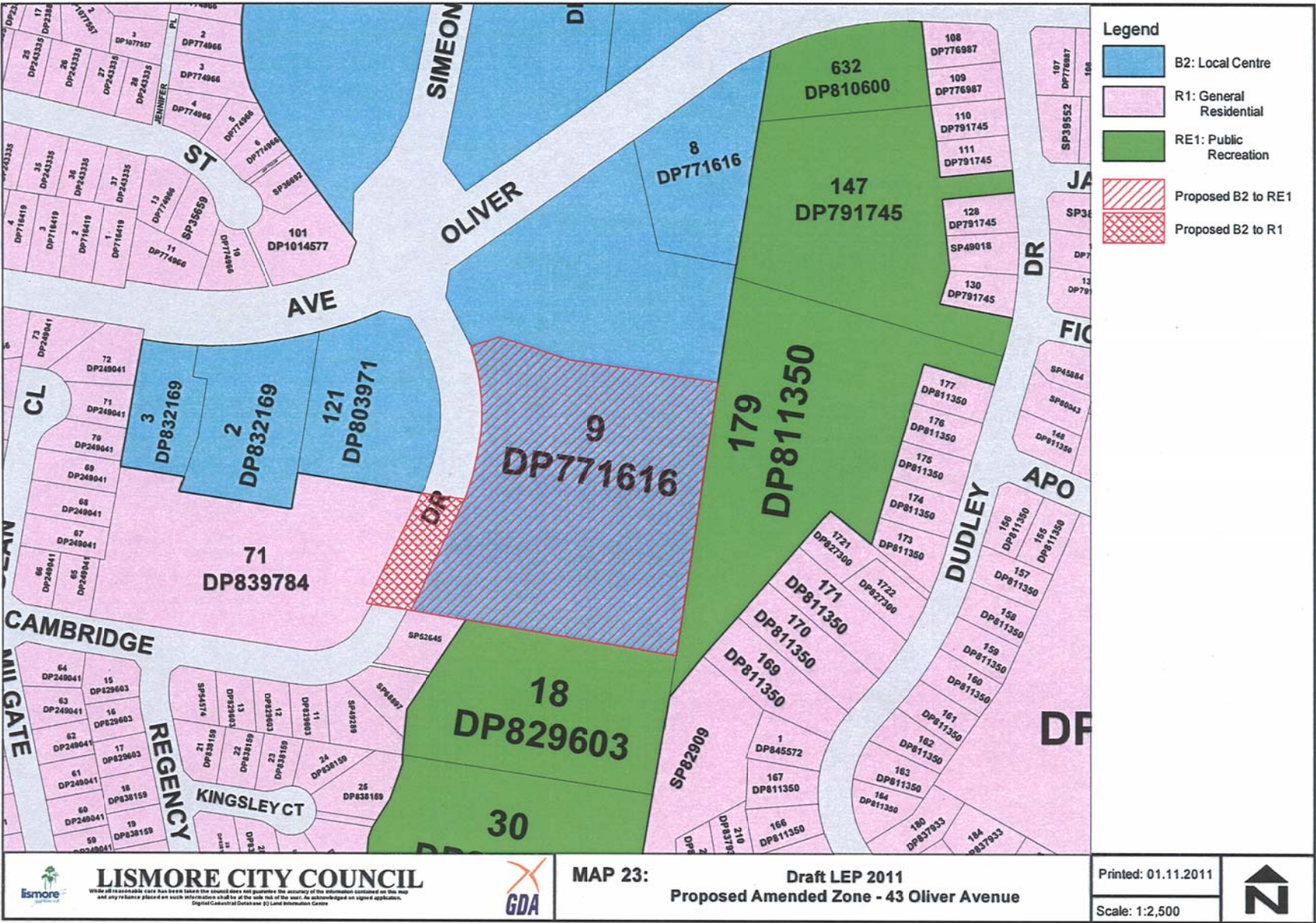
GDA

MAP 22: Draft LEP 2011
Proposed Amended Zones in North Lismore to RE1

Printed: 01.11.2011
 Scale: 1:6,000

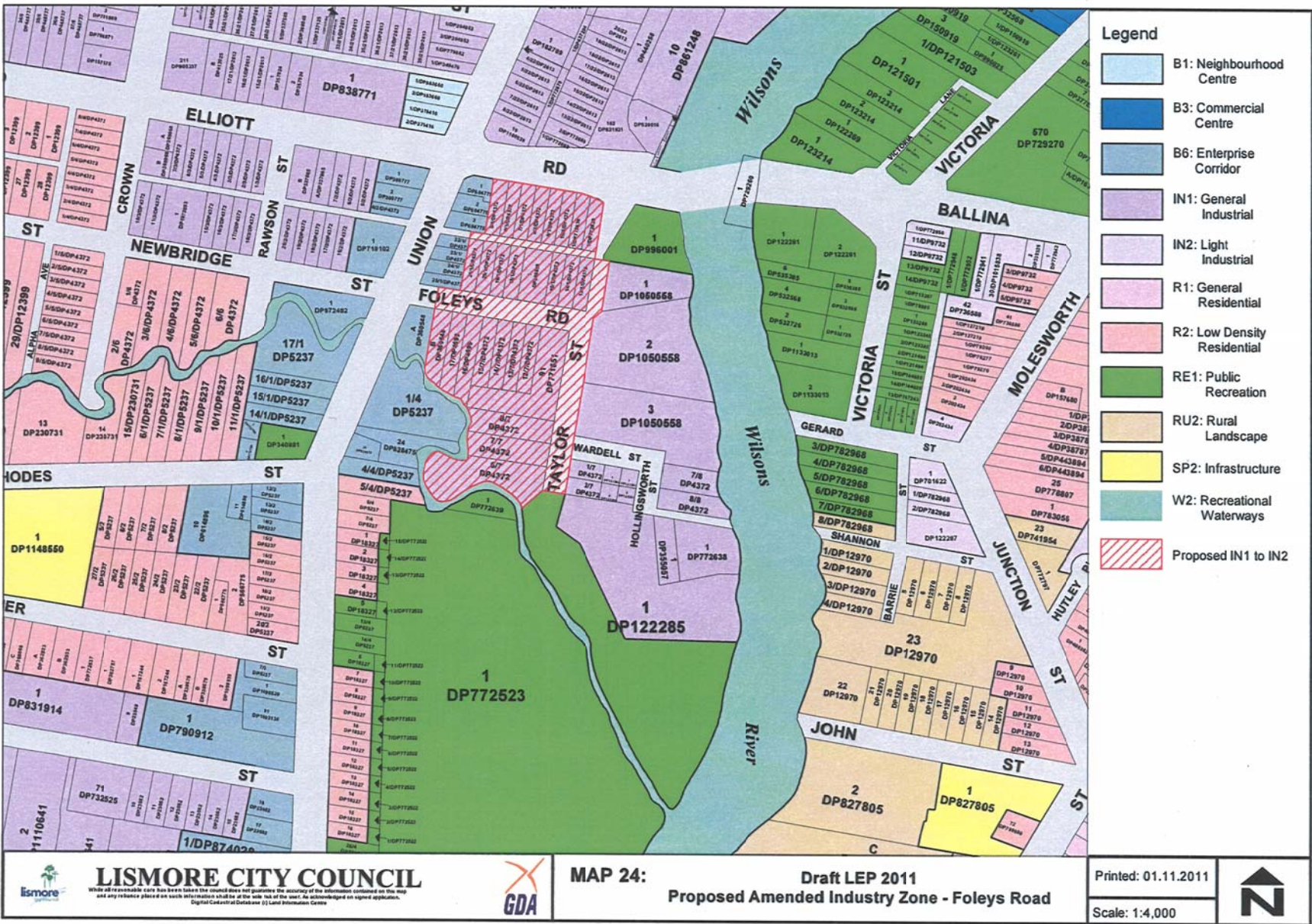


Lismore City Council
 Meeting held 10 November 2011 - Lismore Draft Local Environmental Plan
 2010 - Recommended Amendments and Re-Exhibition (the balance of the
 subjects)



Lismore City Council

Meeting held 10 November 2011 - Lismore Draft Local Environmental Plan 2010 - Recommended Amendments and Re-Exhibition (the balance of the subjects)



LISMORE CITY COUNCIL
While all reasonable care has been taken the council does not guarantee the accuracy of the information contained on this map and any reliance placed on such information shall be at the user's own risk. An acknowledgment is signed application. Digital Cadastral Database (DL Land Information Centre)



MAP 24: Draft LEP 2011
Proposed Amended Industry Zone - Foleys Road

Printed: 01.11.2011
 Scale: 1:4,000



Lismore City Council
 Meeting held 10 November 2011 - Lismore Draft Local Environmental Plan
 2010 - Recommended Amendments and Re-Exhibition (the balance of the
 subjects)