

Annual Report 2022 - 2023





We acknowledge the Widjabal/ Wia-bal people of the Bundjalung nation, traditional owners of the lands and waters on which we operate our business. We honour their unique cultural and spiritual relationship to the land and waters and their continuing and rich contribution to Lismore City Council and the community. We pay our respects to them and their culture, their Elders and community leaders both past and present. Additionally, we acknowledge the vibrant contribution that young Aboriginal people make as emerging leaders of the community.



Contents

Mayor's Message	6
General Manager's Message	7
Who We Are	8
Rebuilding Our City	14
Community Finance Report	28
Statutory Information	34

*This report may contain culturally sensitive content, including images and names of deceased persons of Aboriginal or Torres Strait ancestry.

Nimbin Rocks, Night into Day.



Executive summary

Welcome to the 2022/23 Annual Report for Lismore City Council.

Lismore City Council's 2022/23 Annual Report embodies a year defined by commitment and tireless efforts to rejuvenate our community in the wake of unprecedented challenges. This year's focal points were emergency response, immediate rehabilitation and long-term planning, symbolising our unwavering dedication to our community.

A central theme throughout the year was the meticulous restoration and revitalisation of our city. Swift response measures were crucial in addressing the aftermath of the 2022 natural disaster that had severely damaged our region. In a remarkable display of unity and collaboration, our community and Council joined forces to piece together the fragments of our city's infrastructure.

The past year's achievements stand as a testament to the community's collective determination and unwavering spirit. Notably, significant progress in emergency response and immediate repairs has laid a robust foundation for the comprehensive recovery efforts ahead.

Looking ahead, our shared vision of a revitalised Lismore propels us forward with renewed purpose and an unwavering belief in our ability to overcome any obstacle. We remain steadfast in our commitment to both rebuild our city and restore the distinctive vibrancy and vitality that defines our community. As we celebrate the year's monumental achievements, we remain dedicated to a brighter, more robust Lismore, ready to continue our journey of recovery and growth with a shared sense of purpose.

New pavement, seating and a pedestrian crossing has improved access and safety on the corner of Keen and Magellan streets.

Mayor's Message

It is my pleasure to introduce Lismore City Council's Annual Report.

The last year has been one of recovery after the worst natural disaster in Australia's recorded history. While not everything, nor everyone, is back where they want to be, Lismore is really starting to thrive again.

Since the 2022 disaster, Council has continued to focus on lobbying the NSW and Australian governments to help fund our recovery and better assist our community in their journey, while still providing all the regular services the community expects of us.

This massive disaster recovery effort will continue for some time to come and we will always strive to provide high-quality services to the community. That means making sensible decisions.

This Council was elected to make those tough decisions and improve Council's long-term financial sustainability while increasing funding to improve our roads.

This year's budget once again delivered on that promise and importantly, we now have a viable four-year plan, a Long-Term Financial Plan and Asset Management Plan. I am optimistic that if we are disciplined and stick to these plans, we will finally be on the path to financial sustainability.

Yet while making sound financial judgements and providing services to our community are at the core of what we do, it's also crucially important to look after the mental well-being of all of those who live in our local government area.

I am extremely humbled and proud to have been involved in Council's Opening Our Heart series of events marking the 12-month anniversary of that devastating event.

None of us wanted to celebrate, but what we did want was a safe place for the community to come together, start to heal and to look to the future.

Whether it was the Gathering for Healing and Reflection, the CBD Music From the Heart, the From the Heart Community Concert, Opera in the Gardens, or the amazing Community Cricket match, it was wonderful to see so many smiling faces.

It really was a five-week period that changed our community as we healed in our very uniquely Lismore way.

Remembering these events, and how far we have already come, your Councillors and I have great optimism about what the future holds for our community.

Mayor Steve Krieg



General Manager's Message

I took up my new role as General Manager of the Lismore City Council eight months into the financial year. What has shone through since then is the very strong sense of community and the determination to create an even better place to live, work and raise a family.

During the financial year, the community and Council has shown that by working together we can get things done. There is certainly more to be done, but many people are back in their homes and the vibrancy is returning to our CBD.

As a Council team, we have focused on the rebuild of Lismore and its villages, while also maintaining the delivering of high-quality services.

As we started the rebuild of Lismore City Baths, we continued to collect waste; as we undertook geotechnical studies to repair major road slips, we continued to lend books through our pop-up library; and as we repaired our sewerage treatment plants, we continued to fill potholes.

The damage caused by the February 2022 disaster to our community and Council's own infrastructure cannot be overstated, with more than 250 Council-owned assets damaged.

After completing 'emergency make-safe works', Council appointed local company, Bennett Constructions, in March 2023 as the Managing Contractor for the next stage of the city's recovery and rebuild of our buildings and facilities.

Numerous roads have also been repaired, or are still under repair due to the extensive damage and landslips requiring expert geotechnical expertise.

As we undertook this massive repair of our buildings and extensive road network, Council also looked to the future.

Council launched its first annual Lismore Employment Acceleration Pathways (LEAP) program to provide employment opportunities for people seeking new career paths and to start a career.

Council's Economic Development team also worked closely with our local businesses to revitalise the CBD, strengthen our local economy and grow local jobs.

The success of this 'joint partnership' between local businesses and Council is seen in the rise of CBD occupancy which increased to 65% by August 2023, up from 28.3% a year earlier.

Our staff have also been quietly achieving so much for our community.

One thing Council has not always done well is tell people about the incredible depth and breadth of services and programs we provide.

It is truly extraordinary what we have delivered in the last 12 months.

The Executive Leadership and employees across the organisation are now looking to the future and a very busy 12 months of working to recover, reactivate and reinvigorate our city and its villages.

General Manager Jon Gibbons



Who we are

Lismore is the heart of the Northern Rivers.

Our community at a glance...

Total population

44,334

Urban population

28,876

Rural population

15,457

Unemployment

5.1%

Total households

19,774

Average household size

2.43

Average weekly income

\$1,319

Average age

44

People who speak a language other than English

5.2%

One parent families

13.1%

Single person households

28.4%

Aboriginal and Torres Strait Islander people

5.6%

People born in Australia

89.6%

Reported needing help in their day-to-day lives due to disability

7.1%

As a regional city and services hub, Lismore supports a large urban population as well as providing vital services for many outlying villages, hamlets and rural areas.

Lismore is located within rich farmland and is flanked by beautiful beaches and ancient rainforests. It is 45 minutes from the world-famous holiday destination Byron Bay, 30 minutes from the world-famous alternative lifestyle capital Nimbin and a two-and-a-half hour drive from Queensland's capital city, Brisbane.

Lismore is the recognised centre for health, education, retail, entertainment, culture and sport in the Northern Rivers. It continues to strengthen its status as a regional city with

hospital service upgrades, expansion of university facilities and, in the countryside, the growth of many cottage industries that celebrate and export the best of the region's food, art and natural products to the world.

Lismore's population of around 45,000 encompasses a diverse range of colourful people from all walks of life. Lismore is a city where difference is embraced and community is strong.

All of this combines to create a unique Local Government Area with a character that is vibrant and individual. The region is more broadly known as the Rainbow Region in honour of its diversity.

Compared to NSW, Lismore has a higher proportion of:

Children and secondary schoolers aged 12-17 years old and older people aged 50-85 years.

People working in technical and trade, community and personal service, sales and as labour workers.

People living in low-density housing (separate houses).

People with no access to an internet connection.

*Statistics from the 2021 census

The 'In The Heart' public sculpture in Lismore Laneways was created by local artists Eden Crawford-Harriman and Holly Ahern in 2021.

Your Councillors

Lismore City Council is made up of 11 Councillors, including a popularly elected Mayor, who were elected to serve until September 2024.

Due to COVID-19, the NSW Office of Local Government extended the previous term of Council by 15 months. This means Councillors elected in 2021 will serve a shortened term. The next local government elections will be held in September 2024.



Our Mayor
Mayor Steve Krieg
E: steve.krieg@lismore.nsw.gov.au
T: 6626 0150



Cr Andrew Bing
E: andrew.bing@lismore.nsw.gov.au
T: 0417 504 957



Cr Elly Bird
E: elly.bird@lismore.nsw.gov.au
T: 0418 639 927



Cr Peter Colby
E: peter.colby@lismore.nsw.gov.au
T: 0428 863 134



Cr Darlene Cook
E: darlene.cook@lismore.nsw.gov.au
T: 6626 0154



Cr Vanessa Ekins
E: vanessa.ekins@lismore.nsw.gov.au
T: 0417 245 502



Cr Andrew Gordon
E: andrew.gordon@lismore.nsw.gov.au
T: 0415 283 068



Cr Adam Guise
E: adam.guise@lismore.nsw.gov.au
T: 0478 684 497



Cr Jeri Hall
E: jeri.hall@lismore.nsw.gov.au
T: 6626 0158



Cr Electra Jensen
E: electra.jensen@lismore.nsw.gov.au
T: 6626 0159



Cr Big Rob
E: big.rob@lismore.nsw.gov.au
T: 0414 347 771

Role of Councillors

- Provide strong and effective leadership, planning and decision-making
- Represent the collective interests of residents, ratepayers and the local community
- Plan strategically, allocate resources and provide services and regulation that meet the diverse needs of the local community
- Facilitate communication between the community and the Council

Councillor Entitlements

Councillors are eligible for a range of entitlements and allowances associated with their role, including reimbursement of expenses incurred in carrying out their civic duties and provision of facilities to assist in fulfilling their obligations. These are provided in accordance with Council's Councillor Expenses and Facilities Policy, which ensures entitlements are transparent, accountable and meet the expectations of the community. A copy of the Policy can be downloaded from Council's website at www.lismore.nsw.gov.au.

In 2022/23, a total of \$334,703 was provided in allowances, including:

- \$61,280 for a Mayoral allowance
- \$273,003 in total for Councillor allowances
- \$10,420 in total for Councillor superannuation

Councillors were also eligible for the following allowances, expenses and facilities:

Councillor Expenses and Facilities	\$
Office equipment and facilities	\$439
Telephone calls	\$1010
Conferences and seminar attendance	\$25,307
Training and Professional Development (including Induction)	\$19,653
Interstate visits (including transport, accommodation and other out-of-pocket travelling expenses)	\$0
Overseas visits (including transport, accommodation and other out-of-pocket travelling expenses)	\$0
Expenses for spouses (spouse, partner or other person who accompanied a councillor, being expenses payable in accordance with the Guidelines)	\$195
Childcare (or expenses involved in the provision of care for an immediate family member of a Councillor)	\$0
Total	\$46,604

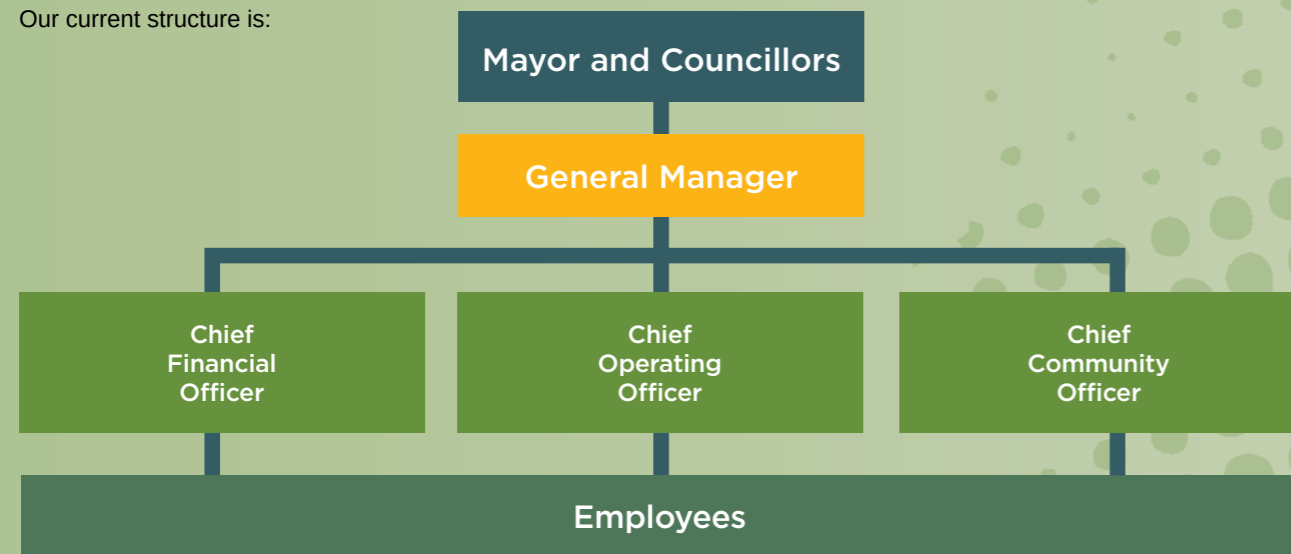


Your Council

Organisational Structure

Every four years, Council adopts a staff structure to support the Council and General Manager to deliver programs and activities detailed within Imagine Lismore Delivery Program.

Our current structure is:



413
Council full-time employees

103
Council part-time employees

61.55
RTRL full-time equivalent employees



General Manager

In the 2022/23 fiscal year, Council had the pleasure of welcoming Jon Gibbons as General Manager. With a distinguished career in local government, Mr Gibbons previously held the position of Business Performance and Governance at Gold Coast City Council. His extensive experience also includes five years as the Chief Executive of Scenic Rim Council, as well as Chief Executive at Norfolk Island and Carpentaria councils.

Mr Gibbons boasts a comprehensive educational background, including an MBA and qualifications in Urban and Regional Planning, Environmental Health, Local Government Management and Project Management. His wealth of knowledge and expertise enriches the executive team and underscores his dedication to supporting Lismore on its path to recovery.

Chief Financial Officer
Kristian Enevoldson

Portfolio includes: People and Culture, Technology and Innovation, Finance, Governance and Risk, Procurement and Contracts.



Chief Operating Officer
Brendan Logan

Portfolio includes: COO Shared Services, Water and Waste, Fleet and Open Spaces and Roads and Quarry.



Chief Community Officer
Eber Butron

Portfolio includes: Planning and Environment, Investment and Growth, Destination and Economy and Customer Experience



Meet the Executive Team

Council's executive team recently underwent a significant restructure to better align the organisation with the needs of the city and community. Under the changes, the previous Directorates and Director roles were replaced with new roles titled Chief Financial Officer (CFO), Chief Operating Officer (COO) and Chief Community Officer (CCO).

Rebuilding Our City

Council is in close collaboration with funding authorities to secure approvals for essential repair works on impacted services and infrastructure.

The initial expenditure for emergency repairs exceeded \$46 million and we are currently in the process of scoping out longer-term and major repair projects. Our dedicated efforts to mend and rejuvenate our community will remain ongoing over the course of the next two to three years.

Change in reporting

Lismore City Council is dedicated to delivering a wide spectrum of services as delineated in the Imagine Lismore Delivery Program and Community Strategic Plan. Nevertheless, the region faced an unprecedented natural disaster and flooding in February and March 2022, necessitating Council to swiftly adapt its services to address the day-to-day requirements of the community.

It is of paramount importance that we recognise the remarkable efforts put forth by our united community in supporting one another throughout the year that followed. Despite changes in reporting practices within Council during this period, this report is geared towards spotlighting Council's progress in 2022/2023. It provides a comprehensive overview of the achievements and highlights within each of the five key themes.

Rebuilding and repairs



Eight teams from across the country competed in the School Sport Australia National Baseball Championships held at Albert Park.

Albert Park Rebuild

The rebuild of Albert Park marked a major milestone in Lismore's recovery.

Lismore's Albert Park hosted the School Sport Australia National Baseball Championships in May, marking a vital milestone in the city's recovery.

Bennett Constructions, the Managing Contractor for flood-damaged facilities, worked diligently to restore the complex to international standards after the facility was extensively damaged from the February 2022 natural disaster.

The event saw more than 350 attendees, including 160 players and 30 officials, representing eight teams from the ACT, NSW, QLD, South Australia and Victoria. The Championships contributed an estimated \$350,000 to the local economy, bolstering businesses and employment opportunities in Lismore.



Councillors and staff inspect flood damage and repairs at Oakes Oval.

Flood Repairs

In February and March 2022, more than 100 Council sites, including buildings, parks, public toilets and facilities, were damaged or destroyed by flooding events. Council is diligently working towards completing repairs for all affected sites by June 30, 2024.

Restoration works were finalised in 2023 in various locations such as Harold Fredrick's Car Park, Wade Park, Riverside Park, Nesbitt Park, Riverview Park and Clyde Campbell Carpark.

The restoration of Albert Park Baseball fields and clubhouse was welcomed at the end of 2022, as was the replacement of solar lights at Harold Fredricks Carpark, restoration of soft fall areas in parks and ongoing restoration of public barbecues.

Council is actively engaged in restoring community assets across multiple facilities.

Grants funding for essential community assets

While many parks and public toilets are nearing restoration, more complex assets like buildings present opportunities for Council to "build back better". Recognising that numerous assets are in flood-prone areas, Council aims to enhance flood resilience in materials and designs during restoration.

Additional grant programs, such as the Essential Community Sport Assets Program (ESCAP) and Community Local Infrastructure Recovery Program (CLIRP) - Arts and Culture Priority Needs Program, were successfully secured, focusing on flood-affected buildings and facilities.

These grants allowed for significant upgrades and improvements to better serve the community, making these assets more resilient and flood resistant.

Essential Community Asset Program (ESCAP):

- \$507,248 for LED lighting upgrades at Crozier Field and Mortimer Oval.
- \$996,358 for flood-resilient repairs and improvements at the Lismore Netball and Tennis Clubhouses and Albert Park Baseball complex, including change rooms, toilets, kitchen/catering areas, flooring, electrical distribution facility relocation, fencing replacement and field drainage upgrades.

- \$344,510 for replacing the subfloor and associated supports at Lismore Basketball Stadium.
- \$1,000,000 for upgrading pump and filter systems at Lismore Memorial Baths.

Community Local Infrastructure Recovery Program (CLIRP) – Arts and Culture Priority Needs:

- \$104,000 for sub-floor venting and roof restoration at Lismore Municipal Building.
- \$494,400 for an internal fit-out at Lismore Library, including the use of flood-resilient materials and raising electrical, data and security components above flood height.
- \$499,004 for an internal fit-out at Lismore Regional Gallery with flood-resilient materials, fixed features, and elevated storage facilities.



Lismore Netball Clubhouse being repaired.

Highlights

The Richmond River Historical Society and Lismore Museum was granted \$123,000 by the State Government to aid in renovating the museum after the February 2022 natural disaster, supporting the restoration of this important cultural institution.

Lismore City Council was granted \$325,427 by the NSW Government for the reconstruction of the Lismore Library, allowing for the replacement of damaged furniture, equipment and the creation of more spacious library facilities in the wake of the February 2022 natural disaster.

Lismore City Council appointed local company, Bennett Constructions, as the Managing Contractor for Buildings and Facilities to oversee the next phase of the city's recovery and reconstruction in the aftermath of the February 2022 natural disaster.

Lismore City Mayor Steve Krieg and Parliamentary Secretary to the Deputy Premier Gurmeh Singh opened the new Keerrong Road Bridge, replacing a flood-damaged culvert washed away during the March 2022 flood event.

Lismore City Council offered an interactive mapping service for flood recovery efforts in the Lismore area, providing real-time details on damaged locations, including event numbers, descriptions, current statuses, proposed remedies, start dates and site photos.

With the announcement of Masters Games in September, many facilities were named as a priority to be repaired, including Crozier Oval, Elaine Blanch Tennis Courts Clubhouse, Marie Mackney Netball Club and Mortimer Oval.

An inclusive and healthy community



The Opera in the Gardens, part of the Opening Our Heart series, was a sold-out event. Photo by NATsky.

Opening Our Heart – One year after the natural disaster

To commemorate the one-year anniversary of the February 28 natural disaster, Lismore City Council organised the Opening Our Heart series of events, providing the community with an opportunity to reflect on the catastrophic natural disaster and look ahead as the city rebuilds.

The events allowed residents to come together, reflect on the past year, reconnect, heal and celebrate the

city's future. The events honoured the resilience and unity that emerged during the disaster.

The series include a Service of Reflection and Healing, a Community Concert, an open CBD Gathering, a Wellbeing Hub, a welcome party for the Bowlzilla Skate event, Flea Circus Skate event, Community Cricket 20/20 and Opera in the Gardens. These events brought the community together and were funded by the NSW Government.

New \$3.9 million Lismore Urban Sports Precinct

Lismore City Council received \$3.9 million in State Government funding to create the 'Lismore Urban Sports Precinct' in the CBD.

The project includes a 2300sqm skate park and infrastructure for skateboarding, roller skating, BMX, scootering and sport climbing. The youth precinct near the corner of Uralba and Dawson streets aims to

host major skate and BMX events, boosting Lismore's status as the regional sporting capital of NSW.

The Urban Sports Precinct will replace Lismore's old skate park, incorporating smart infrastructure and sports lighting for day and night use in a safe environment.

Mobile library recognised for innovative service

The Richmond Tweed Regional Library's Mobile Library Service was honoured with the NSW Public Libraries Association Innovation in Outreach Award, acknowledging its remarkable work following the February natural disaster.

Lismore City Council's General Manager praised the library staff's quick adaptation to provide the community with book access and a sense of normality after the devastating 2022 natural disaster destroyed Lismore Library.

Despite the destruction of Lismore Library and significant damage to the Mobile Library, the dedicated staff persevered and maintained services with a station wagon and Pop-up Library. The Mobile Library serves 19 locations in the Lismore, Tweed, Ballina, and Byron Local Government Areas, welcoming everyone to explore its offerings.



RTRL Mobile Library Officer Gary Dardengo and Ballina Area Librarian Taryn Kelly with the Innovation in Outreach Award.

The Mayor and Councillors with concept plans of the Lismore Urban Sports Precinct.



Highlights

Lismore Active Fest was held at the Goonellabah Sports & Aquatic Centre, featuring an array of free sport workshop activities. This event was supported by the NSW Government's Community Sport Rebuild and Recovery Package, aiding communities affected by the COVID-19 lockdowns.

NIMBIN GNAR-WALLS, a music, art and skateboarding celebration, was held in Goonellabah and Nimbin, providing a valuable community gathering following the challenges of 2022.

Lismore Regional Gallery was honoured with the IMAGInE Award for Innovation and Resilience for creating the Collage Club, a weekly art-focused healing event that provided support to the community in the aftermath of the February 2022 natural disaster and March major flood.

Lismore City Mayor Steve Krieg launched the 2022/24 Reconciliation Action Plan (RAP) during the 2022 NAIDOC Day celebrations, which is Council's third RAP aimed at promoting reconciliation and strengthening relationships with Aboriginal and Torres Strait Islander peoples while empowering them through innovative strategies and inclusive practices.

The 39th Ulysses Club Annual General Meeting was held in Lismore, attracting more than 2000 motorcycle enthusiasts from around Australia for a week of festivities and camaraderie, providing a much-needed economic boost of \$2.2 million to the local economy.

Lismore hosted the Joeys Mini World Cup, a prestigious football tournament that drew more than 2000 participants from across NSW and Queensland. It generated an estimated \$2.2 million boost to the local economy.

Prosperous and vibrant city



The Clyde Campbell solar carpark.

Shared parking for the Lismore CBD

The opening of the Clyde Campbell solar carpark marked a significant step towards a more sustainable future, providing much-needed shade for CBD shoppers during the summer.

Lismore City Council's General Manager highlighted the Council's forward-thinking approach, emphasising the addition of an electric vehicle charging station and expanded shaded parking as valuable assets to the city.

The solar carpark project featured a 99.9kW solar PV system covering 32 public carparks, two accessible carparks, four motorcycle spaces and two electric vehicle charging stations. These charging stations, commissioned on December 23, 2022, utilised the Chargefox system for payments, costing 40 cents per kilowatt-hour. This project received funding through the Federal Government's Drought Communities Program, with \$650,000 allocated for the solar carpark, showcasing the commitment to sustainability.

Occupancy rates rise as CBD gets back to business

As Lismore approached the one-year anniversary of the February 28 natural disaster, a CBD audit conducted by the Council's Destination and Economy team showed promising signs of recovery, with a 60% occupancy rate in the inner CBD area, encompassing street-front and upstairs premises.

Lismore City Mayor Steve Krieg expressed his satisfaction with the results, emphasising the importance of the CBD as a community gathering place.

The audit reflects substantial growth in local businesses and organisations operating in the CBD compared to the post-flood audit from August 2022, which reported a 38.3% occupancy rate.

These figures indicate significant progress toward the pre-flood occupation rate of 90.2% recorded in the audit conducted just prior to the natural disaster in February 2022. Improvements in occupation rates include a 65% increase in overall occupation since August 2022, a 47% increase in shopfront occupation, and a 31% increase in upstairs premises occupation.



The Keen Street Revitalisation Project has made significant improvements for pedestrians and businesses.

Ready to welcome everyone at the Lantern Parade

The corner of Keen and Magellan streets bore significant damage from the February 2022 natural disaster. Our diligent crews embarked on a mission to not only restore the corner and eliminate all tripping hazards but also to introduce enhancements in preparation for this year's Lantern Parade – and they delivered on this commitment.

Their efforts not only included the installation of fresh pavement but also the introduction of new seating and a pedestrian crossing to enhance accessibility and safety. A stroll down Keen Street reveals a brand-new water refill station catering to both you and your furry companions, along with additional seating and waste bins.

Initial feedback from the Keen Street retailers has been very positive. We trust that you will relish the opportunity to unwind and take in the new public space as we continue in our mission to "Build Back Better".

Businesses have returned to the Lismore CBD with occupancy rates on the rise.



Highlights

Lismore City Council introduced a new Listening Booth and Community Book Exchange in the heart of Lismore's CBD, featuring retro phone booth-style 'activation pods' where visitors can experience local audio stories, artwork and community events.

Lismore City Council co-sponsored the Northern Rivers Harvest Food Trail for the first time, offering a platform for a record number of local food producers to participate in the annual event. It showcased their unique offerings to support the region's recovery after being affected by COVID-19 and a natural disaster in February 2022.

Thanks to a \$500,000 grant from the NSW Government's Streets as Shared Spaces program, Nimbin is set to become a more attractive and accessible destination, with enhanced pedestrian mobility, safety and public spaces to better serve the local community and tourists, improving the overall streetscape of the village.

Lismore City Council held workshops and met with the community to gather information for a new Destination Management and Visitor Economy Strategy to revitalise tourism and stimulate our local economy. The strategy went on public display towards the end of 2023.

Council held Lismore Business Renewal Engagement with businesses to hear about current business needs, priorities and achievements, and to workshop ideas for 2023 to help our business centres buzz and Lismore's economic ecosystem thrive.

Lismore City Council has completed road reconstruction and beautification on Bounty Street, Lismore, addressing structural issues and enhancing road safety, with funding allocated for pavement replacement, as well as potential parking, landscaping, kerb and gutter and drainage improvements.

Our natural environment



The Richmond River Estuary Coastal Management Plan is designed to protect our waterways.

Richmond River Estuary Coastal Management Plan: Stage One Scoping Study open for public input

The draft Richmond River Estuary CMP Stage One Scoping Study was made available for public viewing, representing a comprehensive Coastal Management Plan designed to offer enduring management directives for environmental, cultural, recreational and commercial activities in the area.

This initiative prioritises climate change adaptation and evolving population dynamics and is executed through a collaborative 'whole-of-catchment' approach involving Rous County Council, Lismore, Kyogle, Ballina, Byron, and Richmond Valley Councils, with funding support from the Department of Planning, Industry, and Environment (DPIE). Hydrosphere Consulting was engaged by the respective councils to conduct the scoping study.

Given the significant alterations in the Richmond catchment's land use and structure, this holistic approach, as collectively agreed upon by the councils, offered the most promising means to enhance the region's waterway health.

Stage One focused on stakeholder and community involvement and identification of knowledge gaps, which will shape the subsequent phases of the plan's development. The plan adheres to the NSW Coastal Management Act 2016 and the NSW Coastal Management Manual guidelines and is currently in its first of five stages.

Inaugural open properties field day: Exploring bush regeneration in Lismore

The Lismore City Council Environmental Strategies Team, in collaboration with Richmond Landcare, organised its inaugural open properties field day. Despite initial concerns of heavy rainfall, the weather turned out to be favourable, offering attendees a choice of three distinct tours spanning Dorrroughby, Repentance Creek and Koonorigan.

Expert bush regenerators Iain Stych, Richard Burer and Julien Pearce led informative sessions, shedding light on property planning for bush rejuvenation. Conversations revolved around site preparation, ongoing maintenance, cost assessments associated with restoration and expected outcomes. Landholders also shared their experiences and contributed insights from their restoration journeys, including in-kind contributions and lessons learned from collaborating with bush regenerators.

The open properties field day was envisioned as the first in a series, providing newcomers with essential knowledge about bush regeneration and fostering a sense of community engagement.



The open properties field day was well attended.



Lismore Mayor Steve Krieg and SCU's Professor Andrew Rose.

Glass sand trial at Lismore Recycling & Recovery Centre

Lismore City Council's Commercial Services team collaborated with the NSW Environment Protection Authority (EPA), Graham's Concrete and Southern Cross University in a ground-breaking experiment.

They tested the viability of substituting sand with recycled crushed glass in concrete. The initial experiment involved using crushed glass-infused concrete to construct a new floor in a shed situated at the Lismore Recycling & Recovery Centre. This shed will subsequently serve as a dedicated facility for Southern Cross University to pilot innovative waste management and resource recovery technologies.

The project, funded through the EPA's Civil Construction Market Program, allocated over \$240,000 to Council for incorporating glass from kerbside recycling into concrete. This innovative approach will address local infrastructure needs like footpaths, kerbs, drains and roadways, contributing to a more sustainable Lismore by reducing emissions. Southern Cross University's involvement in the ReCirculator program, funded by the Federal Government's Strategic University Reform Fund (SURF), demonstrates their shared vision with Council for a regional circular economy that minimises landfill usage.

Professor Andrew Rose, Academic Director of Southern Cross University's ReCirculator Program, expressed gratitude for the partnership and the opportunity to establish a pilot facility at the Lismore Recycling & Recovery Centre. They aim to exhibit innovative waste solutions and collaborate with local industry and the community to create a circular Northern Rivers economy. Future trials will explore the use of recycled crushed glass in precast concrete products, with the outcomes expected to be published by the NSW EPA in 2024.

Highlights

Boatharbour Landcare and Lismore City Council presented LANDCARE4Lifestylers, a special event catered to lifestyle landholders in the Boatharbour region, offering information, assistance and advice for those with smaller properties who contribute to the area's growth.

The koala exclusion fence upgrade on Skyline and Durham Road, supported by a Department of Planning and Environment (DPE) grant, was completed, contributing to Council's wildlife road strike mitigation efforts in high-risk locations throughout the LGA.

Lismore City Council hosted a four-day Natural Sequence Farming (NSF) training program, funded through the Federal Drought Recovery Grant, aimed at implementing NSF techniques for regenerative farming and land management.

Rural Landholder Initiative grants were offered to landholders to enhance biodiversity in the local area through bush regeneration, prioritising koala habitat, riverbanks and remnant vegetation.

Council, in partnership with the EPA, made steady progress with clean-up efforts on public sites, while Landcare groups within the LGA received additional funding from Council for site restoration post-natural disasters.

North Coast Local Land Services, in collaboration with Lismore City Council, Ballina Shire Council and landowners along Peaces Creek, embarked on a project aligned with the NSW Government's Marine Estate Management Strategy (MEMS) to enhance water quality.

Our built environment



Crews work on Tuntable Creek Road.

Recovery and Risk Mitigation Efforts on Tuntable Creek Road

In the wake of the February 2022 natural disaster, Tuntable Creek Road suffered substantial damage, including 11 landslips.

To ensure connectivity between Nimbin and The Channon, a temporary solution was implemented, involving embankment stabilisation, excavation and the construction of a single trafficable lane with soil nails and sprayed concrete.

However, due to the ongoing risks associated with landslips, a detailed risk assessment was conducted. This assessment mandates weekly visual monitoring, survey monitoring and monthly geotechnical engineer inspections.



Minister for Families and Communities Natasha Maclaren-Jones with Lismore Deputy Mayor Jeri Hall and Lismore MP Janelle Saffin.

MOU to build affordable housing in Lismore

Lismore City Council signed Memorandums of Understanding (MoU) with Landcom and the NSW Department of Communities and Justice, marking a significant step towards constructing additional affordable housing units on Council-owned land in Lismore.

The MoUs included the construction of up to 24 units at 44 Bristol Circuit in Goonellabah and 40 units at 69 Cynthia Wilson Drive. These developments are expected to address the housing crisis in Lismore, which has been exacerbated by the natural disaster.

The partnership ensures the units will remain as low-cost housing indefinitely, providing essential relief to the community's housing needs. The project will help individuals at risk of homelessness gain access to secure and affordable housing, fostering independence and brighter futures.

The Memorandums of Understanding also outlines the involvement of Landcom as project managers and a Community Housing Provider for ownership and management of the new developments.

Council will contribute the land and funds received from a Federal Government Building Better Cities grant, while the Department of Community and Justice will contribute \$5 million to enable the development at Cynthia Wilson Drive.



Minister for Regional Transport and Roads Sam Faraway with Lismore Mayor Steve Krieg and the bridge crew at the opening of the new Sexton Bridge.

Fourth ageing wooden bridge replaced

Minister for Regional Transport and Roads Sam Faraway and Lismore City Mayor Steve Krieg officially opened the new Sexton Bridge at Monaltrie, replacing an ageing wooden bridge with a resilient 16.1m x 7.2m concrete structure to improve safety for local farmers and truck drivers.

This upgrade, one of 10 wooden bridge replacements funded by the \$11 million Fixing

Country Bridges program, enhances connectivity across the entire local government area and benefits the community by ensuring produce can be transported to markets.

Council's Capital Works Engineer Steve Bennetts and the bridge crew were commended for their work, which supported 20 local jobs. This initiative emphasises the importance of robust infrastructure capable of withstanding extreme weather events.

Highlights

Lismore City Mayor Steve Krieg opened the new Mackie Bridge at Rosebank, replacing a causeway damaged in a storm in December 2020, emphasising its enhanced resilience against future flooding.

Lismore City Council awarded the remediation tender for Nimbin Road's landslips to Civil Mining and Construction Pty Ltd, a significant milestone in restoring safe access to the region's cultural and tourist attractions.

Local contractors and prominent construction companies gathered at Southern Cross University for an industry briefing hosted by Lismore City Council to provide insights into the flood-restoration works following the February 2022 natural disaster, aiming to foster collaboration and engagement while outlining the opportunities for businesses in the community.

Lismore City Mayor Steve Krieg inaugurated the new Tucki Creek Bridge at Tucki Tucki, replacing an old wooden bridge with a more resilient concrete structure, enhancing safety, and improving connectivity in the area as part of the Fixing Country Bridges program.

The Lismore Growth and Realignment Strategy 2022 (GARS) was developed, which identifies land that is potentially suitable for future housing, commercial and industrial purposes.

Council introduced the Affordable and Diverse Housing Strategy in March 2023, replacing the 2012 Housing Strategy, with the primary objective of guiding the Council in promoting affordable and medium-density housing within the city's urban areas.

Leadership and participation



Riley Battistuzzi is a participant in this year's Lismore Employment Acceleration Pathways (LEAP) program.

Leap into a new career with Lismore City Council

Lismore City Council launched its first annual Lismore Employment Acceleration Pathways (LEAP) program, providing employment opportunities for individuals seeking new career paths or career starters within the community.

The initial group of 15 participants, including students and recent graduates, were engaged in traineeships spanning various fields such as horticulture, civil construction, water and sewer, libraries, finance and the customer contact centre.

The program's strong start with enthusiastic local candidates promises to benefit both Council and the community, fostering youth employment and skill development. LEAP offers apprenticeships, traineeships and training tailored to participants' interests, all supported by a dedicated professional training team.

LEAP will continue annually, with applications opening at year end and welcomes individuals of all ages aiming to initiate or transition their careers.

2023 Australia Day Awards winners announced

Sophia Watt was honoured as Lismore City Council's 2023 Citizen of the Year during the Australia Day Awards ceremony at the Goonellabah Sports & Aquatic Centre. This was in recognition of her significant contributions to the community, including the coordination of meal preparation and delivery to flood-affected residents in the wake of the February 2022 natural disaster, alongside volunteers and donors.

Other awardees included Naomi Moran as Aboriginal Citizen of the Year for her exceptional flood-recovery leadership and youth support initiatives, Ron Weir as a dedicated community volunteer for his extensive involvement in agricultural show societies, Rotary and other service groups, Love for Lismore Heart Space for creating a healing space through art and crafts after the natural disaster and sports achievers Joshua Herne, Lachlan O'Sullivan and the resilient Under 16s Far North Coast Baseball Team.

These individuals and groups were recognised for their dedication to improving Lismore's community and culture.



Lismore Mayor Steve Krieg with 2023 Citizen of the Year Sophia Watt.



Emergency exercise at Lismore Regional Airport.

Emergency exercise to test Airport's Emergency Plan

A staged emergency exercise took place at the Lismore Regional Airport, showcasing various agencies' response capabilities.

Intended to test the Airport's Emergency Plan, the simulation involved emergency services, including NSW Police, Fire Brigade, Ambulance, SES and Red Cross. Council's focus on safety and readiness was highlighted by Chief Operating Officer Brendan Logan, emphasising the exercise's role in enhancing emergency response coordination.

With activities like simulated injuries and aircraft damage, the three-hour exercise temporarily closed the runway. It was designed to improve procedures in case of a real emergency. This commitment to safety aligns with the airport's ongoing dedication to refining response protocols for the welfare of all airport users.

Highlights

Lismore City Council unveiled a user-friendly website that combined vital services, enhancing accessibility and provided an interactive map and an improved search tool for residents, ratepayers and visitors.

The NSW Government decided to disband the Lismore Local Planning Panel and return planning powers to Councillors.

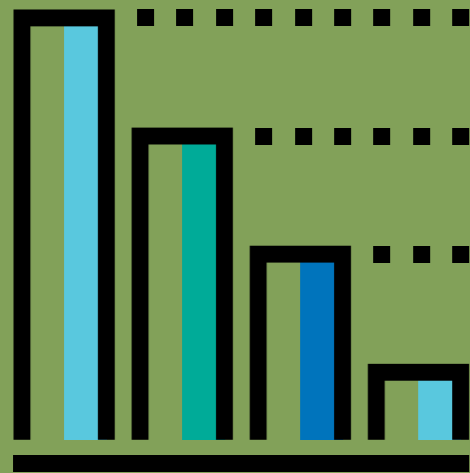
Lismore City Council sought community input on the Revised Flood Prone Lands Development Control Plan (DCP) to update building regulations in flood-prone areas, taking a risk-based approach to future planning and introducing measures to address the effects of climate change.

A Well-Being Hub was held at the Lismore Quad, offering residents an opportunity for reflection and support following the events of February 2022. The hub hosted professional services and various healing and reflection activities.

The remaining balance of donations from The Lismore City Council's Flood Appeal, which raised over \$1.7 million, was distributed equally among all eligible applicants.

Lismore City Council gave away more than 70 free refurbished laptops, tablets and desktop computers to flood-affected local businesses, thanks to generous donations from Vestone and Renew IT.

Community Financial Report 2022/23



What information is included?

The Community Financial Report provides a plain English explanation of our financial statements so that they can be easily understood by our community, business partners, customers and employees. It's a snapshot of:

- our financial performance for 2022-23;
- our financial position at 30 June 2023;
- what the results mean in terms of financial sustainability.

Extension of time to lodge

Council has received an extension to finalise and submit its year-end financial statements for the 2022/2023 year to the Office of Local Government on 22 December 2023.

Once the year end financial statements have been audited and lodged, Council will update this Annual Report and include a full set of its audited financial statements as required under the local Government Act.

What were the results?

Council finished the financial year with an operating surplus of \$45.017 million, but after excluding capital grants and contributions Council reported a deficit of (\$16.194) million. Council received significant grant funding in 2022/23 associated with disaster recovery works in response the floods experienced in February/ March 2022. The underlying performance of Council has shown improvements year on year.

Council invested over \$52.01 million into infrastructure, being property, plant and equipment. This comprised the renewal of existing infrastructure of \$28.2 million and the provisions of new infrastructure of \$23.796 million. Total equity of Council increased by \$144.8 million to \$1.887 billion.

In the 2021/22 financial year, the Lismore LGA suffered two catastrophic flood events in February and March 2022. These events caused considerable

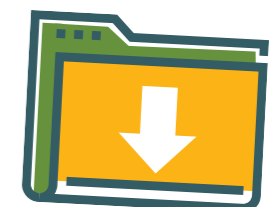
damage to Council's infrastructure assets and adversely impacted Council's financial results.

Looking to the longer-term, Council faces ongoing challenges in recovering from the catastrophic natural disaster of 2022, which is expected to take several years. Council has secured Commonwealth and State government funding to assistance in this process. In addition, there are further challenges to adequately fund the maintenance and renewal of its assets, particularly roads as our community grows and expectations and needs increase. This is not a unique issue to Lismore, but an issue shared with many by many other local governments in NSW.

To address these issues associated with the floods on infrastructure Council has revised its Asset Management Plans and the Long-Term Financial Plans with a view to long-term sustainability.

DID YOU KNOW?

More detailed information about our financial performance and position is provided in the audited Financial Statements and Auditor's Report (Appendix 2), which is available from our website at www.lismore.nsw.gov.au.



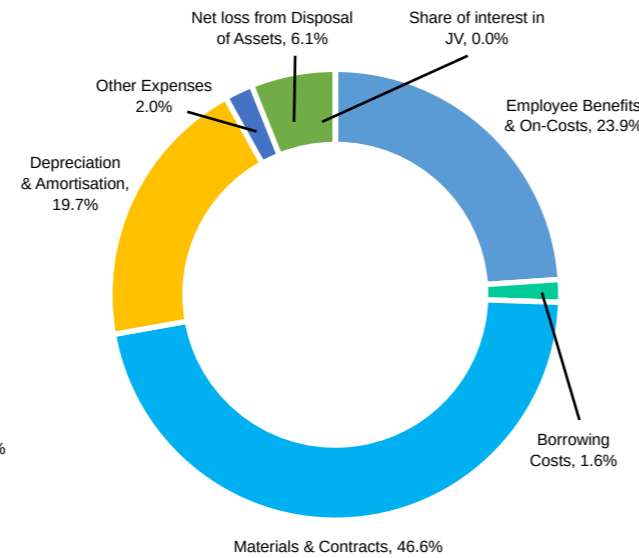
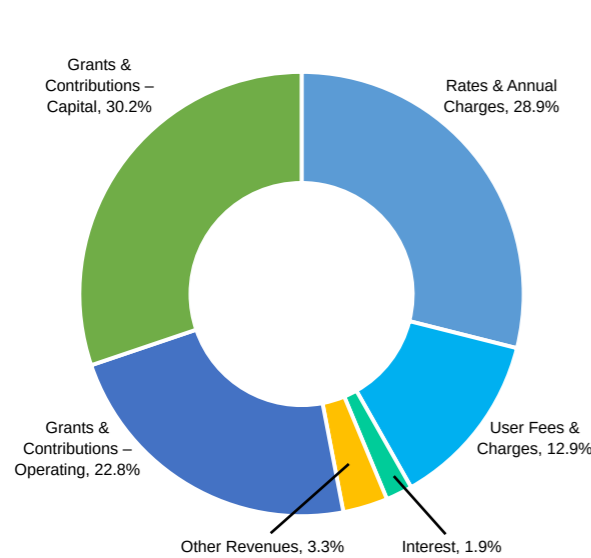
Financial Performance

Total Revenue: \$202.87 million
up \$33.32 million from last year

Total Expenses: \$157.875 million
down by \$6.6 million from last year

Where did the money come from? (%)

How was the money spent? (%)



What was the result?

Net Result: \$44.996 million surplus

(after capital grants and contributions)
up by \$39.93 million from last year

Net Result: (\$16.215) million deficits

(before capital grants and contributions)
down by \$11.005 million from last year

Major changes from 2021-22:

- \$33.142m increase in grants: 2024 Financial Assistance Grant paid in advance \$3.054 million, increase in natural disaster funding of \$19.28 million, roads of \$1.6 million, other grants \$3.8 million and increases non-cash contributions \$1.2 million.
- (\$4.09m) decrease in Other Revenues, associated with insurance claims from natural disaster events.
- \$18.9m decrease in net loss from disposal of assets. 2022 included the recognition of the flood events which caused considerable damage to Council's assets.
- \$4.86m increase in employee costs
- \$13.47m increase in materials and services due to additional cost incurred as a result of the natural disaster events.

DID YOU KNOW?

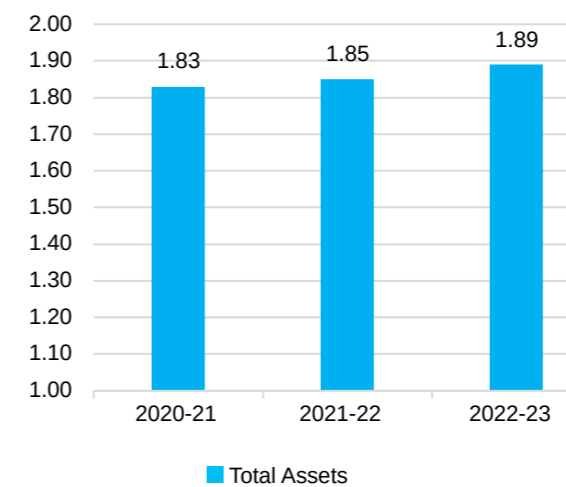
A capital grant or contribution includes money provided by the Government or contributions from developers for Council to renew or build new community assets. The money cannot be spent on Council's day-to-day operating activities or services.

Financial Sustainability

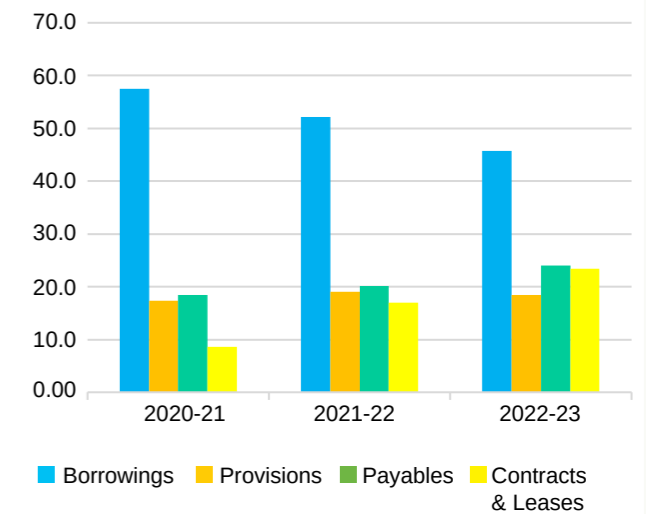
Total Assets: \$1.999 billion
up \$148.5 million from last year

Total Liabilities: \$112.0 million
up by \$3.7 million from last year.

What do we own? (\$ billion)



What do we owe? (\$ million)



91% of Council's assets were infrastructure, property, plant, and equipment, including:

- Roads, bridges, and footpaths
- Water infrastructure
- Wastewater infrastructure
- Stormwater infrastructure
- Land and buildings
- Plant and equipment
- Open space and recreation assets (including parks)

Grants and contributions

Council's grants and contributions increased by \$33.142 million from the previous financial year to a total of \$107.5 million. This included operating grants of \$46.28 million and capital grants and contributions of \$61.211 million.

This increase was mainly due to an increase in natural disaster grant funding of \$19.28 million to a total of \$45.101 million.

Council will continue to advocate all levels of government for additional funding to assist in the recovery phase as it will play a significant role in rebuilding our regional city and infrastructure.

What was the result?

Net Worth: \$1.887 billion
up \$145 million from last year

Major changes from 2021-22

- \$455,000 increase in cash and investments
- \$138.43m increase in infrastructure, property, plant, and equipment
- \$7.08m increase in contract liabilities
- \$6.4m decrease in loan liabilities
- \$2.33m increase in receivables

Financial Sustainability

Each year, we report a series of performance measures, which are local government benchmarks set by the State Government and reflect expectations for financial sustainability. The measures use figures from the Audited Financial Statements (Appendix 2) to demonstrate relationships between key numbers.

There are two types of measures:

- Financial measures, which show how well Council is managing its finances.
- Infrastructure asset measures, which show how well Council is managing its assets.

Financial Measures

What does this mean?

Our financial sustainability measures for 2022-23 suggest that we are able to cover our immediate expenses immediate expenses, service our debts and fund operating expenses during the year however cannot fund the usage of our assets (that is depreciation) to deliver these services.

Operating Performance Ratio

This measures the extent to which revenue raised covers operational expenses.

Benchmark: > 0%

Council's result: **(4.81)%**



Debt Service Cover Ratio

This measures the availability of Council's operating cash to service its debt, including interest, principal and lease payments.

Benchmark: > 2 times

Council's result: **2.79 times**



Own Source Operating Revenue Ratio

This measures financial flexibility by assessing Council's reliance on external funding sources such as grants and contributions.

Benchmark: > 60%

Council's result: **46.98%**



Rates and Annual Charges Outstanding Percentage

This measures the impact of uncollected rates and annual charges on Council's liquidity and the adequacy of Council's recovery efforts.

Benchmark: < 10%

Council's result: **9.95%**



Unrestricted Current Ratio

This measures whether Council has enough short-term resources to cover short-term financial obligations.

Benchmark: > 1.5 times

Council's result: **2.18 times**



Cash Expenses Cover Ratio

This measures the number of months Council can continue paying for its immediate expenses without additional cash inflows.

Benchmark: > 3 months

Council's result: **12.98 months**



Infrastructure Asset Measures

What does this mean?

The infrastructure asset measures, which are focussed on longer-term sustainability, suggest that Council faces an ongoing challenge to adequately fund the maintenance and renewal of its assets. For 2022/23, the measures highlight that Council was not able to find enough funding to cover the required asset maintenance and renewal costs, however these results were impacted by the events of February/ March.

It is expected that moving forward the ratios will improve for 2022/23 as Council restores the damaged infrastructure.

Asset Maintenance Ratio

This measures actual maintenance for the year as a percentage of the required maintenance for the year.

Benchmark: > 100%

Council's result: **106.95%**



Buildings and Infrastructure Renewal Ratio

This measures the rate at which existing assets are being renewed against the rate at which they are depreciating.

Benchmark: > 100%

Council's result: **259.01%**



Infrastructure Backlog Ratio

This measures Council's infrastructure backlog as a proportion of the total value of Council's infrastructure assets.

Benchmark: < 2%

Council's result: **12.23%**



Achieving Financial Sustainability

What does this mean?

Financial sustainability is Council's ability to meet the reasonable expectations of current residents while maintaining its financial capital and infrastructure capital over the long-term or put at risk the capacity of the future generations to meet their own needs.

Council will be considered financial sustainable if it can meet the KPI ratios specified by the Office of Local Government.

To be financially sustainable in the long-term Council will need to find and allocate increased funding to infrastructure to meet the benchmarks. This is best achieved through the development of its key planning documents including the Asset Management Plan, the Workforce Management Plan and the Long-Term Financial Plan.

Statutory Information 2022/23



Annual Report 2022/23

Statutory Information Contents

Anti-slavery Action	36
Anti-slavery Statement	36
Beneficiaries of Financial Assistance (grants and donations)	36
Capital Works Projects	36
Companion Animal Enforcement	36
Contracts Awarded	37
Councillor Expenses and Facilities	41
Development Contributions and Development Levies	42
Detailed Projects - Contributions Levies	43
Total Contributions and Levies Expended	44
Disability Inclusion Action Plan	45
Government Information (Public Access) Applications	46
Environmental Upgrade Agreements	48
External Bodies (controlled by Council)	48
External Bodies (delegated by Council)	49
External Bodies (participated in by Council)	49
Equal Employment Opportunity	49
Legal Proceedings	50
Overseas Visits	51
Public Interest Disclosure	51
Rates and Charges Written Off	51
Recovery and Threat Abatement Plans	52
Remuneration (General Manager)	52
Remuneration (Senior Staff)	53
Employee Report	53
Special Rate Variation Expenditure (Business Promotion)	54
Special Rate Variation Expenditure (Biodiversity Management)	58
Special Rate Variation Expenditure (Security)	62
Stormwater Management Services	62
Swimming Pool Inspections	62
Voluntary Planning Agreements	63
Works on Private Land	63

Anti-slavery Action

In accordance with the Local Government Act 1993 Section 428(4)(c) and (d), an annual report must contain a statement detailing the action taken by the council in relation to any issue raised by the Anti-slavery Commissioner during the year concerning the operations of the council and identified by the Commissioner as being a significant issue.

Inclusion of a Modern Slavery Statement has been adopted into the new Sustainable Procurement Policy due for release on 1 December 2023.

Anti-slavery Statement

In accordance with the Local Government Act 1993 Section 428(4)(c) and (d), an annual report must contain a statement of steps taken to ensure that goods and services procured by and for the council during the year were not the product of modern slavery within the meaning of the Modern Slavery Act 2018.

Council is committed to maintaining high ethical standards and conducting its business responsibly. In alignment with the NSW Modern Slavery Act 2018, which came into effect on 1 January 2022, the Council diligently undertakes reasonable steps to ensure that goods and services procured are not the products of modern slavery. As a local government entity, we recognise our obligations under the NSW Act and strive to ensure transparency in our business transactions and procurement processes. Our officers, contractors, and suppliers are expected to promptly raise any concerns or suspicions about potential instances of modern slavery in any segment of our organisation or supply chains.

Beneficiaries of Financial Assistance (grants and donations)

In accordance with Local Government Regulation 2021 cl217(1)(a5), an annual report must include details of the total amount contributed or otherwise granted under the Local Government Act s356 to financial assist others.

Assistance Category	Amount (\$)
FNC Life Education Van Relocation	\$4,190
Mayor's Discretionary Funding	\$500
Rural Halls – Maintenance and Insurance	\$60,000
Rural Halls – Rates	\$19,289
Contribution to Friends of Lismore Rainforest Botanic Gardens	\$65,070
Total	\$149,049

Capital Works Projects

In accordance with the Division of Local Government Capital Expenditure Guidelines (2010), councils should provide a report on capital works projects in annual reports.

Council did not undertake any capital works projects that were subject to the Capital Works Expenditure Guidelines during 2022-2023.

Companion Animal Enforcement

In accordance with the Local Government Regulation 2021 cl217(1)(f), an annual report must include a statement of the Council's activities during the year in relation to enforcing and ensuring compliance with the Companion Animals Act 2008.

Contracts Awarded

In accordance with the Local Government Regulation 2021 cl217(1)(a2), an annual report must provide details (names, nature, amounts) of contracts awarded for amounts exceeding \$150 000.

Contract No.	Contract Details	Contractor	Tender Amount
99362	Civil Mining & Construction Pty Ltd	Nimbin Road - Landslip remediation works	\$13,471,655
94776	StraBe Group Pty Ltd	Purchase of 12 bus shelters for installation	\$11,011,440
92658	Rous County Council	Rous County Council - Bulk Water purchases	\$6,430,700
98841	CONVIC PTY LTD	C 2022-248 D&C of Lismore Urban Sports Precinct	\$3,979,602
100387	NTS Group Pty Ltd	PO for the Nimbin Water Pipeline Replacement Project	\$2,247,729
99130	Greg Clark Building Pty Ltd	Major Package 1. Undertake the flood restoration	\$1,319,900
96300	GHD Pty Ltd	Accelerated EPAR Scoping - Flood Recovery Works	\$968,000
96298	Ti Tree Bioenergy	Waste to Queensland - T21/9 Emergency Waste Disposal	\$943,800
96297	Ti Tree Bioenergy	Waste to Queensland - T21/9 Emergency Waste Disposal	\$934,362
100109	Ledonne Constructions Pty Ltd	PO for the works to replace the sewer pipeline	\$934,286
93384	Insituform Pacific Pty Ltd	Sewer main lining package 22-23	\$920,681
94201	Stabilcorp Pty Ltd	IRW Approved Funding - Nimbin Road North - Stabilisation	\$900,000
93633	Ti Tree Bioenergy	Cell 3 Waste to Queensland Quarter 2 - 1/10/2022	\$887,172
91818	Ti Tree Bioenergy	Cell 3 Waste to Queensland from 1/7/2022 to 30/9/22	\$880,880
91941	Stabilised Pavements Of Australia	Keerrong Road - Flood Recovery Works - Pavement St	\$800,000
94202	Stabilised Pavements Of Australia	Nimbin Road South - Stabilised Pavement Rehabilitation	\$ 800,000
96295	Stabilised Pavements Of Australia	Jiggi Road - Stabilised Pavement Rehabilitation	\$800,000
95864	KOR Equipment Hire Solutions Pty Ltd	Fleet Item v1193 - Volvo FE350 Cappellotto 2600CL	\$ 778,904
100117	Bennett Constructions (NSW) Pty Ltd	Bennett Constructions - PC3 - Project Management	\$762,154
96296	Ti Tree Bioenergy	Waste to Queensland - T21/9 Emergency Waste Disposal	\$750,402
95651	Hyatt Engineering Pty Ltd	Tuntable Creek Emergency Soil Nailing works	\$721,741
93342	Flottweg Australia Pty Ltd	East STP Container Dewatering Purchase	\$708,510
95413	Stabilcorp Pty Ltd	Riverbank Road - Stabilised Pavement Rehabilitation	\$700,000
95645	Stabilised Pavements Of Australia	Jiggi Road - Stabilised Pavement Rehabilitation	\$700,000
99291	Bennett Constructions (NSW) Pty Ltd	Bennett's Contract 22/180 - Payment Claim 2	\$668,829
99140	Ausroad Manufacturing Pty Ltd	Fleet Item v1672 - Isuzu FXZ 240-350 Auto Cab	\$649,507
93421	O'Brien Electrical and Plumbing	22-23 lateral lining package	\$620,000
94344	Concept Engineering Services Pty Ltd	Delivery Partner- Flood Recovery Works	\$550,000
94355	GHD Pty Ltd	Delivery Partner- Flood Recovery Works	\$550,000
98683	Bennett Constructions (NSW) Pty Ltd	Contract 22/180 - Bennett Constructions EPAR, etc	\$550,000
92285	Stabilised Pavements Of Australia	Nimbin Road South - Stabilised Pavement Rehabilitation	\$520,000

Contract No.	Contract Details	Contractor	Tender Amount
91559	Unibridge Australasia Pty Limited	Town Bridge - Unibridge structure 50% of total cost	\$515,654
93392	Paveline International Pty Ltd [DO NOT	Fleet Item v1672 - Isuzu FXY 240-350 Auto	\$505,882
93204	Stabilcorp Pty Ltd	IRW Approved works - Pinchin Road - Pavement Stabilisation	\$500,000
98359	JMFC Pty Ltd	Reinstate Airport Boundary Fence following 2022	\$472,379
95744	Osmoflo Water Management Pty Ltd	Supply, hire and monthly servicing of one MF1200	\$470,000
95620	Stabilised Pavements Of Australia	Kyogle Road - Stabilised Pavement Rehabilitation	\$450,000
93635	James Frizelles Automotive Group	Fleet Item v4093 - Ford Ranger 4x4 XL	\$449,038
96625	Coote Burchills Engineering Pty Ltd t/a Burchills Engineering Solutions	Lismore Rail trail - Stage 1 - Detail Design	\$448,500
98882	GHD Pty Ltd	Project design work - cost estimation for EPAR submission	\$440,000
99253	GHD Pty Ltd	Post EPAR submission - Design management	\$440,000
96301	Civilcs Pty Ltd	Civil Works (v3) provided for Lismore City	\$436,363
93634	James Frizelles Automotive Group	Fleet Item v4013 - Ford Ranger 4x4 XL	\$435,741
91685	Stabilised Pavements Of Australia	Duncan Road - Flood Recovery Works - Pavement Stabilisation	\$420,000
95130	Bucher Municipal Pty Ltd	Fleet Item v1733 - Hino FG1628 + Bucher V65T Dual	\$404,818
93632	Stabilcorp Pty Ltd	IRW Approved Funding - Nimbin Road North - Stabilisation	\$400,000
93879	Stabilised Pavements Of Australia	IRW Approved Works - Blue Knob Road - Pavement Heavy Patch	\$400,000
94875	Stabilcorp Pty Ltd	IRW Approved Works - Gundurimba Road - Heavy Patch	\$400,000
96058	Stabilised Pavements Of Australia	IRW Approved Works - Corndale Road - Flood Recovery	\$400,000
96302	Stabilcorp Pty Ltd	IRW Approved Funding - Nimbin Road North - Stabilisation	\$400,000
92465	Transport for NSW	Dunoon Road Emergency works including embankment	\$396,000
95237	Blair & Sons Engineering Contractors	JO50.2 - Hydrant Stage 1 (Q22/76), JO50.3 - L etc	\$394,650
98980	PCA Ground Engineering	Piling for Town bridge replacement (FCB)	\$381,150
97164	James Frizelles Automotive Group	Fleet Item v1313 - Isuzu NPR75-190 AMT Crew C etc	\$378,438
94881	Civilcs Pty Ltd	Supply & construction of fire hydrants and associated	\$376,388
91962	MWL & CO Pty Ltd	Concrete works required for CBD footpath replacement	\$368,279
93701	Southside Agencies	Fleet Item v1510 - Hino FC1124 Auto Truck Mounted	\$354,299
92164	Datacom Systems Pty Ltd	M365 E3 Unified FSA Sub Per User x266, M365 E etc	\$353,368
96775	Stabilised Pavements Of Australia	IRW Approved Works - Keerrong Road - Stabilised Patch	\$350,000
98749	HXR Pty Ltd	Crushing Services March 2023 per T20/35 - Agg etc	\$342,366
98958	Phoenix Power Recyclers Pty Ltd	Food and Garden Organics disposal - April 2023	\$331,633
93157	Blair & Sons Engineering Contractors	Project Management (BASEC) - Front entrance etc	\$302,300
92284	Stabilcorp Pty Ltd	Pinchin Road - Stabilised Pavement Rehabilitation	\$300,000

Contract No.	Contract Details	Contractor	Tender Amount
93810	GHD Pty Ltd	Delivery Partner - Flood Recovery Works	\$275,000
91687	Willow & Sparrow Pty Ltd	WASEG Capital Projects Manager T19/1 - Sept 2022	\$262,570
93646	Blair & Sons Engineering Contractors	Project management services for CBD footpath upgrade	\$246,021
94638	Planit Consulting	Project Management of Runway Strip and Drainage	\$242,206
92466	Transport for NSW	LCC03- Repentance Creek EPAR	\$242,000
91940	InQuik Pty Ltd	Mackie Road bridge - replacement of flood damaged	\$234,300
91692	HXR Pty Ltd	Crushing Dust/Aggs - June 2022 per T20/35, Cr etc	\$233,783
98592	Civil Consult Pty Ltd	Project Engineer- Nimbin Road Landslips	\$232,000
96971	Nation Partners Pty Ltd	Review of Waste Management Services - January 2023	\$224,600
94140	HXR Pty Ltd	September Crushing - RB20, September Crushing etc	\$224,062
98591	Willow & Sparrow Pty Ltd	Project Engineer- Nimbin Road Landslips	\$223,552
94711	HXR Pty Ltd	October Crushing - Aggregates, October Crush etc	\$221,751
97984	James Frizelles Automotive Group	Fleet Item v1632 - Isuzu NQR80-190 AMT Single etc	\$219,204
99882	Engenicom Pty Ltd	Engagement of PAP, Buildings Program for Flood Restoration	\$215,000
96473	Rugendyke and Bashforth Contracting Pty Ltd	Cawongla Road culvert works - plant & truck hire	\$208,500
92074	HXR Pty Ltd	June 2022 5123 t aggs @ \$12.75 + gst per tonne 320	\$208,484
95621	HXR Pty Ltd	Crushing November 2022 - Aggregates Per T10/3, etc	\$207,745
96776	Local Government Procurement	Further engagement of Brendan Smith (Project Management)	\$204,375
98590	GHD Pty Ltd	Project Management - Worker Village Accommodation	\$204,049
92383	HXR Pty Ltd	June crushing	\$203,993
99178	RPQ Asphalt Pty Ltd	260t of 70mm deep lift AC14 and 190t of 42mm, etc	\$200,000
99992	GDR 1012 Pty Ltd	Further engagement of Brendan Smith (Project Management)	\$198,977
92381	HXR Pty Ltd	Crushing July 2022 - Aggregates Per T20/35, C, etc	\$194,920
93614	Flocon Engineering Pty Ltd	Fleet Item v1692 - Flocon 6T Bitumen Truck Body	\$190,274
91577	RWES Rob Ward Electrical Services	Undertaking Level 2 & 3 Electrical Design and Construction	\$189,524
93309	Vanderfield Pty Ltd (RDO)	Fleet Item v2763 - John Deere 5095M 4x4 Cab T, etc	\$183,780
94948	Half Tide Plumbing and Roofing	Roof replacement and associated works at the Goonellabah	\$181,863
93800	Remondis Australia Pty Ltd	Disposal Kerbside Organics (FOGO) to Remondis	\$180,180
92384	National Pump & Energy Pty Ltd	Supply of diversion pumps for flood damaged sewer	\$180,000
97035	HXR Pty Ltd	January Crushing - Aggregates per T20/35, Jan, etc	\$179,831
92431	Transport for NSW	The Channon Road Bridge abutments, guardrail replacement	\$176,000
99188	Northern Rivers Sheds	Provision of a new building including supply and installation	\$175,400
93928	Blair & Sons Engineering Contractors	DRFA - EW - Project Management - September 2022	\$175,000

Contract No.	Contract Details	Contractor	Tender Amount
95149	Blair & Sons Engineering Contractors	DRFA - IRW - Project Management Flood Restoration	\$175,000
95890	Blair & Sons Engineering Contractors	DRFA - IRW - Project Management Flood Restoration	\$175,000
96482	Joel Jensen Constructions	Lismore Showgrounds Bushfires Recovery	\$172,983
99450	Civil Consult Pty Ltd	RMCC Ordered Works T19/1	\$170,520
97981	Latsyrc Pty Ltd	Engagement of Safety Advisor (Tim Murray) - Flood	\$170,500
99110	Data Signs Pty Ltd	Fleet Item v7231 - Data Signs C5 Variable Mes, etc	\$168,208
97162	NS Komatsu	Processing - Loader Lease Fees per month, Pro, etc	\$165,528
97163	NS Komatsu	Stockpiling - Loader Lease Fees per month, St, etc	\$165,528
93803	Local Government Procurement	Project Manager- Flood Recovery Works	\$165,000
94949	Latsyrc Pty Ltd	Safety Manager for Flood Works	\$165,000
96299	GHD Pty Ltd	Delivery Partner- Flood Recovery Works. Refer Trim	\$165,000
98593	Local Government Appointments	Project Management - Site Office for Flood Recover	\$164,340
93346	HXR Pty Ltd	Crushing August 2022 - RB20 per T20/35, Crush, etc	\$162,057
96512	Rous County Council	Water bill for Waste Facility - 08/08/2022	\$157,333
93407	Blair & Sons Engineering Contractors	DRFA - EW - Project Management - August 2022 Payment	\$157,089
92827	Blair & Sons Engineering Contractors	DRFA - EW - Project Management of Emergency works	\$156,393
97860	Willow & Sparrow Pty Ltd	Dawson St (Orion to Magellan) 725m of DN225 etc	\$156,390
92380	Viadux	Purchase of 292 X 12.0m lengths DN200 PE100 PN16	\$155,000
97612	James Frizelles Automotive Group	Fleet Item v1422 - Isuzu NQR87-190 AMT Crew C, etc	\$154,426
100108	Synergy Resource Management Pty Ltd	Supply and install drainage to field 2 at Nimbin	\$151,916
93203	Morrison Low Consultants P/L	1.1 Review of Asset Management Plans, 1.2 Rep, etc	\$151,140
97165	Southside Agencies	Fleet Item v1632 - Hino 716 Single Cab Tipper, etc	\$150,840
100108	Synergy Resource Management Pty Ltd	Supply and install drainage to field 2 at Nimbin H	\$151,916
93203	Morrison Low Consultants P/L	1.1 Review of Asset Management Plans, 1.2 Rep, etc	\$151,140
97165	Southside Agencies	Fleet Item v1632 - Hino 716 Single Cab Tipper, etc	\$150,840

Councillor Expenses and Facilities

In accordance with *Local Government Regulation 2021 cl217(1)(a1)*, an annual report must include details of the total cost during the year of the payment of the expenses of, and the provision of facilities to, councillors in relation to their civic functions (as paid by the council, reimbursed to the councillor or reconciled with the councillor), including separate details on the total cost of each of the following:

Councillor Expenses & Facilities	\$
Office Equipment and Facilities	\$439
Telephone calls	\$1010
Conferences and Seminar Attendance	\$25,307
Training and Professional Development Inc Induction	\$19,653
Interstate Visits (including transport, accommodation and other out-of-pocket travelling expenses)	\$0
Overseas Visits (including transport, accommodation and other out-of-pocket travelling expenses)	\$0
Expenses for spouses (spouse, partner or other person who accompanied a councillor, being expenses payable in accordance with the Guidelines)	\$195
Childcare (or expenses involved in the provision of care for an immediate family member of a Councillor)	\$0
Total	\$46,604

Allowances	\$
Mayoral Allowance	\$61,280
Total Councillor Allowances	\$273,003
Superannuation	\$10,420
Total	\$344,703

The name of the Mayor and each individual councillor that completed council's induction program (where an induction program has been delivered during the relevant year)

Not applicable

The name of the Mayor and each Councillor who participated in any ongoing professional development program during the year

Councillors Bing, Bird, Cook, Gordon, Ekins, Hall, Jensen, Krieg, Rob

The number of training and other activities provided to the Mayor and Councillors during the year as part of a professional development program:

12.

Development Contributions and Development Levies

Disclosure of how development contributions and development levies have been used or expended under each contributions plan.

(Commencing 1 July 2022. Reporting does not apply retrospectively – not required 21-22)

Environment Planning and Assessment Regulation 2021 cl 218A(1)

SECTION 7.11 & 64 PLANS SUMMARY TO 30 JUNE 2023					
Section 7.11 Plan	Opening Balance	Contributions Received	Interest	Expenditure/Commitment	Balance 30/06/23
Emergency Services	59,100	12,600	1,500	(30,000)	43,100
Community Services & Facilities	630,700	175,300	21,400	0	827,400
Public Domain Facilities	441,100	108,700	14,800	0	564,600
Open Space & Recreation Facilities	1,092,500	57,400	33,200	(18,107)	1,165,100
Cycleways Facilities	603,800	74,000	18,900	(18,000)	678,600
Rural North & South Traffic Management Facilities	671,100	266,500	24,000	0	961,600
Urban Traffic Management Facilities	3,514,600	811,500	117,000	0	4,443,200
Carparking	78,500	0	2,300	0	80,900
Stormwater	(48,000)	8,100	0	0	(40,000)
Street Trees	38,400	14,200	1,300	(1,800)	52,200
Heavy Haulage	222,400	139,400	6,400	(157,500)	210,700
Section 94 Plan Administration	80,100	53,900	2,972	(15,000)	122,000
Total S7.11 Contributions	7,384,300	1,721,600	243,772	(240,407)	9,109,400
S7.4 Planning Agreements***	708,400	0	0	(708,400)	0
Section 64 Plan	Opening Balance	Contributions Received	Interest	Expenditure/Commitment	Balance 30/06/23
Sewerage 7530.2035.2015	0	1,920,582	0	(1,920,582)	0
Water 8530.2035.2015	0	208,516	0	(208,516)	0
Total S64 Contributions	0	2,129,097	0	(2,129,097)	0

Detailed Projects - Contributions Levies

Details for projects for which contributions or levies have been used must contain:

- project identification number and description
- the public amenity or public service the project relates to
- amount of monetary contributions or levies used or expended on project
- percentage of project cost funded by contributions or levies
- amounts expended that have been temporarily borrowed from money to be expended for another purpose under the same or another contributions plan
- value of the land and material public benefit – other than money or land
- Whether project is complete

(Commencing 1 July 2022. Reporting does not apply retrospectively – not required 21-22)

Reg 218A

(2)(a),(b),(c),(d),(e),(f),(g)

SECTION 7.11 & 64 PLANS SUMMARY TO 30 JUNE 2023					
Section 7.11 Plan	Opening Balance	Contributions Received	Interest	Expenditure/Commitment	Balance 30/06/23
Emergency Services	59,100	12,600	1,500	(30,000)	43,100
Community Services & Facilities	630,700	175,300	21,400	0	827,400
Public Domain Facilities	441,100	108,700	14,800	0	564,600
Open Space & Recreation Facilities	1,092,500	57,400	33,200	(18,107)	1,165,100
Cycleways Facilities	603,800	74,000	18,900	(18,000)	678,600
Rural North & South Traffic Management Facilities	671,100	266,500	24,000	0	961,600
Urban Traffic Management Facilities	3,514,600	811,500	117,000	0	4,443,200
Carparking	78,500	0	2,300	0	80,900
Stormwater	(48,000)	8,100	0	0	(40,000)
Street Trees	38,400	14,200	1,300	(1,800)	52,200
Heavy Haulage	222,400	139,400	6,400	(157,500)	210,700
Section 94 Plan Administration	80,100	53,900	2,972	(15,000)	122,000
Total S7.11 Contributions	7,384,300	1,721,600	243,772	(240,407)	9,109,400
S7.4 Planning Agreements***	708,400	0	0	(708,400)	0
Section 64 Plan	Opening Balance	Contributions Received	Interest	Expenditure/Commitment	Balance 30/06/23
Sewerage 7530.2035.2015	0	1,920,582	0	(1,920,582)	0
Water 8530.2035.2015	0	208,516	0	(208,516)	0
Total S64 Contributions	0	2,129,097	0	(2,129,097)	0

Total Contributions and Levies Expended

Total value of all contributions and levies received and expended during the year.
(Commencing 1 July 2022. Reporting does not apply retrospectively – not required 21-22)
Reg 218A(3)(a),(b)

SECTION 7.11 & 64 PLANS SUMMARY TO 30 JUNE 2023					
Section 7.11 Plan	Opening Balance	Contributions Received	Interest	Expenditure/Commitment	Balance 30/06/23
Emergency Services	59,100	12,600	1,500	(30,000)	43,100
Community Services & Facilities	630,700	175,300	21,400	0	827,400
Public Domain Facilities	441,100	108,700	14,800	0	564,600
Open Space & Recreation Facilities	1,092,500	57,400	33,200	(18,107)	1,165,100
Cycleways Facilities	603,800	74,000	18,900	(18,000)	678,600
Rural North & South Traffic Management Facilities	671,100	266,500	24,000	0	961,600
Urban Traffic Management Facilities	3,514,600	811,500	117,000	0	4,443,200
Carparking	78,500	0	2,300	0	80,900
Stormwater	(48,000)	8,100	0	0	(40,000)
Street Trees	38,400	14,200	1,300	(1,800)	52,200
Heavy Haulage	222,400	139,400	6,400	(157,500)	210,700
Section 94 Plan Administration	80,100	53,900	2,972	(15,000)	122,000
Total S7.11 Contributions	7,384,300	1,721,600	243,772	(240,407)	9,109,400
S7.4 Planning Agreements***	708,400	0	0	(708,400)	0
Section 64 Plan	Opening Balance	Contributions Received	Interest	Expenditure/Commitment	Balance 30/06/23
Sewerage 7530.2035.2015	0	1,920,582	0	(1,920,582)	0
Water 8530.2035.2015	0	208,516	0	(208,516)	0
Total S64 Contributions	0	2,129,097	0	(2,129,097)	0

Disability Inclusion Action Plan

Disability Inclusion Act 2014, s. 13

Council must include in its annual report information on the implementation of its Disability Inclusion Plan.

Council's Disability Inclusion Action Plan (DIAP) promotes equal rights for everyone in our community. It also recognises Council's responsibility to support people living with disabilities to access the same human rights as everyone else in the community.

Key achievements in 2022/23 in implementing the DIAP include:

- Creation of the Collage Club, a weekly creative arts session that is accessible and supported by Auslan interpreters at Lismore Regional Gallery.
- Drafting of the Equal Employment Opportunity Management Plan.
- Changing from People & Safety to People & Culture.
- The Pedestrian Spine through Heritage Park provides improved connectivity and accessibility for pedestrians travelling from Lismore City Hall through to the Wilsons River.
- Secured funding to complete an adult change station facility inside the Lismore Transit Centre.
- Promotional campaign for awareness of the beach wheelchair carried out as part of International Day of People with Disability actions.
- Recommendation from Council's Access and Inclusion Advisory Group included in Business Newsletter, to consider accessibility when footpath trading, or placing furniture and signage.
- Establishment of dyslexia reading collection at Richmond Tweed Regional Library.
- Increasing the amount of home library delivery services.
- Introduction of the Social Circle, a weekly social gathering to reduce social isolation in regional communities.
- Construction of a new public carpark at Hepburn Park, including disability carparking spaces.
- Construction and improvements of footpaths as part of the Lismore Employment Lands project to service the residential areas.
- Design for Access and Mobility standards incorporated into the design of the Keen Street CBD Footpath Replacement project.
- Redesign of the Solar Carpark project plans to ensure accessible car parking spaces were incorporated to current standards.

Government Information (Public Access) Applications

In accordance with the Government Information (Public Information) Act 2009 s125 and Regulation 2009 cl7(3), an annual report must provide:

- Details of the review of its program for the release of government information in the public interest.
- Statistical information about access applications received during the reporting year.

	Access granted in full	Access granted in part	Access refused in full	Information not held	Information already available	Refuse to deal with application	Refuse to confirm/deny whether information is held	Application withdrawn
Media	0	0	0	0	0	0	0	0
Members of Parliament	0	0	0	0	0	0	0	0
Private sector business	0	2	0	3	0	0	0	0
Not for profit organisations or community groups	1	0	0	0	0	0	0	0
Members of the public (application by legal representative)	0	0	0	0	0	0	0	0
Members of the public (other)	1	8	2	2	2	4	0	0

* More than one decision can be made in respect of a particular access application. If so, a recording must be made in relation to each such decision. This also applies to Table B.

	Access granted in full	Access granted in part	Access refused in full	Information not held	Information already available	Refuse to deal with application	Refuse to confirm/deny whether information is held	Application withdrawn
Personal information applications*	1	0	0	0	0	0	0	0
Access applications (other than personal information applications)	0	8	2	5	3	2	0	0
Access applications that are partly personal information applications and partly other	0	2	0	0	0	2	0	0

* A personal information application is an access application for personal information (as defined in clause 4 of Schedule 4 to the Act) about the applicant (the applicant being an individual).

Reason for invalidity	No of applications
Application does not comply with formal requirements (section 41 of the Act)	2
Application is for excluded information of the agency (section 43 of the Act)	0
Application contravenes restraint order (section 110 of the Act)	0
Total number of invalid applications received	2
Invalid applications that subsequently became valid applications	0

	Number of times consideration used*
Overriding secrecy laws	0
Cabinet information	0
Executive Council information	0
Contempt	0
Legal professional privilege	0
Excluded information	0
Documents affecting law enforcement and public safety	0
Transport safety	0
Adoption	0
Care and protection of children	0
Ministerial code of conduct	0
Aboriginal and environmental heritage	0

* More than one public interest consideration may apply in relation to a particular access application and, if so, each such consideration is to be recorded (but only once per application). This also applies in relation to Table E.

	Number of times consideration used*
Responsible and effective government	0
Law enforcement and security	0
Individual rights, judicial processes and natural justice	8
Business interests of agencies and other persons	2
Environment, culture, economy and general matters	0
Secrecy provisions	0
Exempt documents under interstate Freedom of Information legislation	0

	Number of applications
Decided within the statutory timeframe (20 days plus any extensions)	15
Decided after 35 days (by agreement with applicant)	0
Not decided within time (deemed refusal)	2

Table G: Number of applications reviewed under Part 5 of the Act (by type of review and outcome)		
	Decision varied	Decision upheld
Internal review	0	0
Review by Information Commissioner*	1	1
Internal review following recommendation under section 93 of Act	1	0
Review by NSW Civil and Administrative Tribunal	0	2**

* The Information Commissioner does not have the authority to vary decisions but can make recommendations to the original decision-maker. The data in this case indicates that a recommendation to vary or uphold the original decision has been made by the Information Commissioner.

**Review by NCAT ongoing as at 1 September 2023.

Table H: Applications for review under Part 5 of the Act (by type of applicant)	
	Number of applications for review
Applications by access applicants	3
Applications by persons to whom information the subject of access application relates (see section 54 of the Act)	0

Table I: Applications transferred to other agencies under Division 2 of Part 4 of the Act (by type of transfer)	
	Number of applications transferred
Agency-initiated transfers	0
Applicant-initiated transfers	0

Environmental Upgrade Agreements

In accordance with Local Government Act 1993 s54D(2) and s54P(1), an annual report must include particulars of any environmental upgrade agreement entered into by the council.

A council may enter into an environmental upgrade agreement with a building owner and a finance provider in relation to a building. An environmental upgrade agreement is an agreement under which:

- a building owner agrees to carry out environmental upgrade works in respect of a building, and
- a finance provider agrees to advance funds to the building owner to finance those environmental upgrade works, and
- the council agrees to levy a charge on the relevant land for the purpose of repaying the advance to the finance provider.

Council did not enter into any Environmental Upgrade Agreements during the reporting period.

External Bodies (controlled by Council)

In accordance with Local Government Regulation 2021 cl217(1)(a7), an annual report must include a statement of all corporations, partnerships, trusts, joint ventures, syndicates or other bodies (whether or not incorporated) in which the council (whether alone or in conjunction with other councils) held a controlling interest during the year.

NIL for 2022/23

External Bodies (delegated by Council)

In accordance with Local Government Regulation 2021 cl217(1)(a6), an annual report must include a statement of all external bodies that during that year exercised functions delegated by the council.

Council recognises Richmond Tweed Regional Library (RTRL) as an associate in its financial reporting. Council has a 23% interest in RTRL.

External Bodies (participated in by Council)

In accordance with Local Government Regulation 2021 cl217(1)(a8), an annual report must include a statement of all corporations, partnerships, trusts, joint ventures, syndicates or other bodies (whether or not incorporated) in which the council participated during the year.

Council has an interest in a joint operation – North East Weight of Loads Group (NEWLOG). This organisation is responsible for reducing damage to Council roads. Council has an interest in Northern Rivers Joint Organisation (NRJO) and NEWaste.

Equal Employment Opportunity

In accordance with Local Government Regulation 2021 cl217(1)(a9), an annual report must include a statement of the activities undertaken by the council during the year to implement its equal employment opportunity management plan.

Council's Equal Employment Opportunity (EEO) Plan details our commitment to deliver equal employment opportunity through the Reconciliation Action Plan, Disability Inclusion Action Plan and other measures, to ensure a workforce that is representative of the demographics of our community.

Key achievements in 2022/23 in implementing the EEO Plan include:

- Launched the inaugural Lismore Employment Acceleration Pathways (LEAP) program. This annual program aims to create employment opportunities within the local community for those looking to start or change careers, a group of 15 people, consists of school students and recent school graduates who will undertake traineeships in horticulture, civil construction, water and sewer, libraries, finance and the customer contact centre.
- Celebrated International Women's Day event, #EmbraceEquity, it serves as a vital platform for promoting gender equality, empowering women, advocating for change, building solidarity and raising awareness. It contributes to the ongoing effort to create a more inclusive and equitable organisation.
- Launched 2022-2024 Reconciliation Action Plan (RAP) at the NAIDOC Day celebrations. This highlights our commitment to reconciliation, engages with Indigenous communities, raises public awareness, and signifies a dedication to progress in building better relationships with Aboriginal and Torres Strait Islander peoples.
- Participated in 2022 Female Leadership Forum, which provided valuable opportunities for personal and professional growth, networking, and the exchange of ideas and experiences for emerging and established leaders.

Legal Proceedings

In accordance with the Local Government Regulation 2021 cl217(1)(a3), an annual report must include a summary of the amounts incurred by the council during the year in relation to legal proceedings taken by or against the council (including amounts, costs and expenses paid or received by way of out of court settlements, other than those the terms of which are not to be disclosed) and a summary of the state of progress of each legal proceeding and (if it has been finalised) the result.

Details	Costs (\$)	Status	Result
Council & Ors ats Widjabul Wai Bai Native Title Federal Court Proceedings No SAD1174/2013	\$25,505	Complete	This matter is in the progress of a Native Title claim. It is not a claim against Council but a claim on Crown Land managed by LCC. Consent determination issued December 2022. This matter is now complete.
Winten North Lismore Plateau Ryan v NRPP & LCC & Winten Judicial Review appeal to L&E Court	\$7,955	Part finalised	Application is before the court and LCC is endeavouring to limit their involvement as the substantive matter has now generally concluded for Council.
Michael Santin v LCC. Quarry DA & Compliance – appeal against refusal of DA	\$12,716	Complete	Applicant withdrew appeal. A new 4.55 amended Development Application was submitted.
Graham Peter Meineke trading as GM Project Development & Management v LCC. Subdivision 658 Ballina Rd appeal against refusal of DA	\$30,877	Complete	Matter has now concluded with a Court approved conciliatory Development Consent granted
LCC v Dajoco Investments Pty Ltd & Coyne. Class 4 proceedings in the L&E Court to enforce Council Orders relating to unlawful residential occupation of a building below flood and unauthorised illegal building works	\$7,342	Complete	Council was successful in the matter and the Court made Orders requiring the applicant to undertake specific works. Council has ceased pursuing costs in this matter as following 2022 floods the respondent is permitted to reside at the property for up to two years.
Land & Environment Court Proceedings. McCloy Appeal 226 Invercauld Rd Goonellabah	\$191,301	Complete	An appeal was lodged against council's refusal – the appeal was heard in July 2023 and the refusal upheld. Matter is now complete.
MacMahon & Rawling V LCC – Class 1 (3rd party) appeal – subdivision 805 Ballina Rd Goonellabah	\$3,040	Complete	Matter was dismissed at the 2nd mention due to wrong class of appeal and summons not served lawfully. . Matter is complete.
LCC V Ross. Swimming pool barrier not compliant	\$28,179	Complete	Application to enforce development control order to render the pool safety fenced and or filled in was submitted to the Court on or around November 25 2022 with a listing sought in February 2023. Orders were granted to fill pool in March 23 – there is no access to site to allow this and the owner has no capacity to fulfill this. A temporary safety fence has been installed to make the area safe
Council V Zelandoni Class 4 proceedings failure to comply with development control order – 575 Jiggi Rd Goolmangar	\$13,336	Complete	Proceedings commenced December 2022 to gain compliance with development control order issued 9 July 2021 regarding structures and shipping containers at 575 Jiggi Rd. Final orders issued 19 May 2023. Matter is now complete
Total Legal Expenses	\$320,251		

Overseas Visits

In accordance with Local Government Regulation 2021 cl217(1)(a), an annual report must include details (including the purpose) of overseas visits undertaken during the year by councillors, council staff or other persons while representing the council (including visits sponsored by other organisations).

No overseas travel was undertaken by councillors or Council staff during the reporting period.

Public Interest Disclosure

In accordance with the Public Interest Disclosure Act 1994 s31 and Regulation 2011 cl4, Council must include the following information:

Component	#
Number of public officials who have made a public interest disclosure to the public authority.	1
The number of public interest disclosures received by the public authority in total and the number of public interest disclosures received by the public authority relating to each of the following:	1
• corrupt conduct	1
• maladministration	0
• serious and substantial waste of public money or local government money (as appropriate)	0
• government information contraventions	0
• local government pecuniary interest contraventions	0
Number of public interest disclosures finalised by the public authority in this reporting period.	1
Whether the public authority has a public interest disclosure policy in place.	Yes
What actions the head of the public authority has taken to ensure that his or her staff awareness responsibilities under section 6E (1) (b) of the Act have been met.	Online Code of Conduct training is available for all staff.

Rates and Charges Written Off

Local Government Regulation 2021 – cl132

The annual report must include the amount of rates and charges written off during 2022/23.

Details	2022/23
Pensioner Abandonments	
General	\$661,210
Water	\$223,668
Wastewater	\$232,467
Domestic Waste	\$177,422
Other Abandonments	\$0
Postponed Rates & Interest	\$0
Written off due to hardship	\$1,666
Total	\$1,296,433

Recovery and Threat Abatement Plans

Fisheries Management Act 1994, s220ZT (2)

Recovery and threat abatement plans – Councils identified in a recovery and threat abatement plan as responsible for implementation of measures included in the plan, must report on actions taken to implement measures as to the state of the environment in its area.

Local councils have partial responsibility for three actions in the Threat Abatement Plan for Removal of Large Woody Debris from NSW Rivers and Streams. These are:

CRA 2: Ensure the development, administration and implementation of legislative and policy frameworks to protect riparian vegetation and maintain future supply of large woody debris. This includes development consents, State Environmental Planning Policies, property vegetation plans, private native forestry codes of practice, native vegetation regulations, integrated forest operations approvals and forest operating procedures.

CRA 3: Review environmental impact assessment processes and procedures used by consent and determining authorities when considering developments or activities that have the potential to impact on large woody debris. Identify anomalies, inconsistencies or deficiencies and modify processes as required.

CRA 4: Identify options to utilise regulatory and voluntary incentive-based mechanisms to protect large woody debris in priority areas known to support threatened species populations or ecological communities and implement as appropriate.

Lismore City Council assessment processes include referral to a staff ecologist to ensure compliance with the Biodiversity Conservation Act and relevant plans under the Fisheries Management Act. An Environment Officer – Flood Recovery Roads & Bridges also reports on riverine projects that may impact the recovery and threat abatement plans. During the reporting period, no development applications involving removal of large woody debris from a river or stream was received. No project work undertaken by Lismore City Council involved removal of large woody debris from waterways.

Remuneration (General Manager)

In accordance with Local Government Regulation 2021 cl217(1)(b), an annual report must include a statement of the total remuneration package of the General Manager during the year that includes the total of the following

Component	Amount (\$)
Salary	\$310,536
Bonus/Performance/Other payments	\$0
Superannuation	\$30,349
Non-cash benefits	\$1,062
Fringe Benefits Tax payable	\$1,038
Total Remuneration	\$342,985

Remuneration (Senior Staff)

In accordance with Local Government Regulation 2021 cl217(1)(c), an annual report must include a statement of the total remuneration packages for senior staff members (expressed as the total, not of individual members) during the year that includes the total of the following:

Component	Amount (\$)
Salary	\$941,743
Bonus/Performance/Other payments	\$0
Superannuation	\$80,004
Non-cash benefits	\$1,540
Fringe Benefits Tax payable	\$849
Total Remuneration	\$1,024,136

Employee report

Councils must publish a statement of the total number of persons who performed paid work for them on Wednesday 23 November 2022 including, in separate statements, the total number of the following:

Labour Statistics Lismore City Council

Total number of persons who performed paid work	555
<ul style="list-style-type: none"> • Permanent Full-time basis • Permanent Part-time basis • Casual basis • Fixed Term/Temporary Contract 	<p>390</p> <p>87</p> <p>49</p> <p>9</p>
The number of staff members employed by the council who are "senior staff" for the purposes of the Local Government Act 1993 (the Act)	3
The number of persons engaged by the council, under a contract or other arrangement with the person's employer, that is wholly or principally for the labour of the person, and	16
The number of persons supplied to the council, under a contract or other arrangement with the person's employer, as an apprentice or trainee.	1

Special Rate Variation Expenditure (Business Promotion)

Councils must report on special rate variation expenditure (granted under s508) in accordance with conditions of any instruments of approval made by the Minister. For the Business Promotion SRV, Council is required to report in its annual report:

- the program of expenditure that was actually funded by the Special Variation;
- any significant differences between the Proposed Program and the program of expenditure that was actually funded by the Special Variation and the reasons for those differences; and
- the outcomes achieved as a result of the Special Variation.

Total Income Received (\$):		\$0 SRV fees collected between 2022-23		
		<p>\$539,700 reserves from previous financial years Please note regarding:</p> <ul style="list-style-type: none"> Income - due to 2022 flood disaster impacts, Council resolved to suspend collection of SRV from Lismore ratepayers in the 2022-23 year. Reserves - \$539,700 reserves from previous financial years (unexpended funds due to disruptions including floods and COVID) Expenditure - Overall SRV expenditure was minimised in 2022/23, with only essential activities delivered that were informed by flood recovery and Business Renewal engagement with stakeholders. Details and variation reasons outlined below. 		
Details (Expenditure as funded by SRV)	Budget (\$)*	Actual (\$)	Diff (\$)	Reason for \$ Difference
Promotion – Businesses and events including:	\$95,000	\$90,822	\$4,178	The 2022 natural disaster severely impacted local business needs. Accordingly, marketing focus was on 'What's Open' flood recovery campaign, and progressing shop local and Christmas campaigns in line with Business Renewal Engagement priorities.
• Christmas Campaign		\$6,702		
• CBD banners		\$9,062		
• Contractor spend		\$5,488		
• Marketing and production costs		\$69,570		

Details (Expenditure as funded by SRV)	Budget (\$)*	Actual (\$)	Diff (\$)	Reason for \$ Difference
Vibrancy – Activation and Events including:	\$81,950	\$72,418	\$9,532	Most 2022-23 events and activation projects were impacted by disaster, including Masters Games and Eat the Street (cancelled), and various activation projects commissioned for production by local creatives engaging with Laneways businesses (paused).
• Christmas events sponsorship		\$26,527		
• Eat the Street sponsorship		-		
• Masters Games sponsorship		-		
• Lismore event activation sponsorship		\$5,000		
• Lismore Laneways activation		\$10,000		
• New events and pop-up activities (including Lismore Delights)		\$30,891		
Experience - Placemaking and CBD Improvements. Including	\$1,000	\$569	\$431	2022 disaster impact meant placemaking projects were postponed, to focus on essential recovery and business renewal priorities.
• Wayfinding project		\$400		
• Parklet project		\$169		
• Greening pilot		-		
• CBD lighting project		-		
• Consultants / grant co-contribution for streetscape improvement funding opportunities.		-		
Support for Businesses and Events including:	0	0	0	2022 disaster impact on Council and partners, meant initiatives and plans were postponed, to focus on essential recovery and Business Renewal Engagement.
• Learning and training programs				
• Microgrant pilot for new activation projects				
• Sustainable innovation pilot				
• Business communications materials				
Coordination and Overheads including:	\$98,600	\$98,572	\$28	Business recovery and renewal engagement continued to be the key focus for Council's Destination and Economic development team during the remainder of the financial year.
• Salaries, oncosts and labour hire		\$98,240		
• Contingency		-		
• Planning and design, engagement and grant co-contribution		\$332		
Total Expenditure	\$276,550	\$262,381	\$14,169	

Strategy Area/Project	Outcome
Promotion – Businesses and Events	<ul style="list-style-type: none"> Final 13 weeks of the 'What's Open' campaign (May-Sept 2022) to help business recovery and local shopping after the flood disaster. Delivered through sponsorship of the Lismore App to develop lists and stories featuring businesses reopening across Lismore (viewed by over 170,000 by September, data provided by Lismore App analytics). The CBD Activation Officer also developed interactive map updated with businesses as they opened, and shared these business and community support updates through posters and social media content across Come to the Heart website, Business e-Newsletter and Council's publication 'Local Matters' delivered across the community. Delivery of the 'Loving Local Gift Card' program with almost \$16,000 loaded onto cards for spending at local businesses between July 2022 and June 2023 (data provided by Why Leave Town platform on which the gift cards operates). The network of participating stores is still rebuilding, and cards have been used for disaster relief initiatives along with shop local and Christmas prize campaigns. Targeted Christmas advertising (TV, Radio, Lismore App), social media, email and Council printed promotions – which was identified as a critical priority in August 2022 Business Renewal Engagement. Council's @cometotheheart Instagram account engaged 251% more accounts in December 2022 compared to the previous month. Spendmapp transactional data across Lismore LGA showed total local spending in December 2022 of 73.03M, approaching to pre-disaster spending of \$77,77M in December 2022 and 73.26M in December 2020. CBD revitalisation through banner promotions, with new LOVE LISMORE banners around the Block during the year, approximately 50 new Christmas banners (replacing those destroyed by 2022 floods) and 40 new winter season banners across greater CBD promoting a range of beloved events, arts and cultural organisations returning and popping up again in Lismore. Promotions of Lismore events, business and attractions throughout the year, including digital assets (Facebook and Instagram); advertising and content published online and via TV, radio and print channels; website content; and CBD signs and banners. A marketing agency was engaged to develop Christmas promotional content, and to create reels to showcase local business stories that significantly increased engagement. While a new website is in development, total Come To The Heart website views were over 195,000 between July 22- June 23, with top pages being the Opening our Heart program overview and various event pages; What's On; the Car Boot Market; and the What's Open page linking to the map and Lismore App campaign – which reflects significance of activation, events and promotional efforts outlined in this report.
Vibrancy – Activation and Events	<p>Most 2022-23 events and activation projects were disrupted, postponed or cancelled due flood disaster. With disaster impacts cannot be overestimated during reconstruction and recovery phases, beneficial event and activation outcomes included:</p> <ul style="list-style-type: none"> Active engagement and promotional support for the Pop-Up Hub at Herald Fredericks Carpark June – December 2022, which enabled for flood-impacted businesses to trade, flood recovery services to operate, and local markets to return to CBD on various Sundays and drew together thousands of community members. This was enormously beneficial for locals reconnecting with much-loved shops and markets, accessing recovery services and mental health support, and starting to encourage local shopping again in the CBD. Lismore Delights – this new activation program was piloted on Thursday nights in December 2022, to boost beneficial engagement with local businesses, aiming to activate Lismore for late night trade leading up to Christmas, and leverage beloved and new festive events with entertainment, footpath and in-store shopping, plus promotions around the Block. Over a dozen local acts were engaged to perform on the four Thursdays at various sites and roaming around the Block, to attract families, locals and visitors to Lismore. Enabling Santa's Wonderland to pop-up in a CBD premise (as Gallery venue closed since floods) and boosting engagement with an elf hunt (with local lollies plus the chance for families to win Loving Local Gift Cards prizes), along with social media campaigns and competitions to attract shoppers to the CBD in the lead up to Christmas. Sponsorship of Christmas events including the Shopbaby Carols in the Heart event at Nesbitt Park in South Lismore to celebrate Christmas with high-profile performances; and in-kind management support of the Very Merry Markets held at the Quad (promotional, waste and portaloos costs covered which were necessary during reconstruction ongoing at this site). Supporting business engagement with the Opening Our Heart events marking the 12 month anniversary of the 2022 disaster, in particular for the March 4 2023 music event that closed the CBD block for a day and drew thousands of visitors and locals together. Sponsorship of LisAmore! Italian festival, which drew nearly 5,000 people to Lismore on the weekend of 17 and 18 June.

Strategy Area/Project	Outcome
Experience - placemaking initiatives	<ul style="list-style-type: none"> As most of the experience initiatives for parklets, greening, lighting and wayfinding were scheduled for 2022, flood impacts mean planned projects have been postponed and are being reconsidered for the 2023-24 financial year. Expenditure funded some repairs and replanning costs, in preparation for delivery in the 2023-24 financial year.
Support for Businesses and Events	<p>Flood recovery and renewal has continued to be the focus for this period. Key touchpoints have been:</p> <ul style="list-style-type: none"> Business Renewal Engagement sessions in August 2022 and March 2023 (primarily resourced through in-kind support through CBD Activation Officer's time), including face-to-face sessions, online surveys and circling back with insights and outcomes. Engagement and support outreach. Particularly during later 2022 months, with ongoing support as needed, including business visits, distributing flyers to help share current flood-recovery information, web updates and links to support agency, and weekly presence at Business Hub at SCU to connect with flood-impacted businesses.

Special Rate Variation Expenditure (Biodiversity Management)

Councils must report on special rate variation expenditure (granted under s508) in accordance with conditions of any instruments of approval made by the Minister. For the Biodiversity Management SRV, Council is required to report in its annual report:

- the program of expenditure that was actually funded by the Special Variation;
- any significant differences between the Proposed Program and the program of expenditure that was actually funded by the Special Variation and the reasons for those differences; and
- the outcomes achieved as a result of the Special Variation

Total Income Received (\$):		\$557,994			
No.	Details (Program/Project Expenditure as funded by SRV)	Budget (\$)*	Actual (\$)	Diff (\$)	Reason for \$ Difference
1	Cleaning up our own backyard: Planning and processes	\$53,000.00	\$40,750	\$12,249.83	4516 - overcommitted for 22/23 as no budget was set aside for traffic control 4532 - underspend on roadstrike report as budget had to be rolled over for works and invoice that was not received during 22/23
2	Cleaning up our own backyard: Supporting the community	\$37,000.00	\$35,702	\$1,297.95	Preparation of Annual Community Report on BMS implementation not completed - outstanding action
3	Working with rural landholders	\$166,000.00	\$150,780	\$15,219.90	Underspend on field day events due to ongoing flood impacts, and underspend on RLI budget due to project cancellations/scope changes
4	Working in the urban environment	\$165,800.00	\$153,719	\$12,081.42	Flood affected riparian habitat restoration and weed management sites in the Lismore urban area remained inaccessible and received less maintenance than anticipated, projects are ongoing. Reduced capacity of community groups to work on flood impacted sites
5	Koala Plan of Management	\$26,000	\$10,934	\$15,066	Partnership project with FOK was not receipted as a result of project delays, flood impacts and contractor availability.
Total Expenditure		\$447,800	\$391,885	\$55,915	

Strategy Area/Project	No. (SRV area)	Outcome
<p>Identification and inspection of areas of High Conservation Value roadside vegetation and implementation of weed control</p> <ul style="list-style-type: none"> HCV roadside sites were worked as per ongoing maintenance commitments. Six priority sites at Bridge Street, Numulgi Road, Woodlawn Road, Kilgin Road, Nimbin Road and Boerie Hill were all worked. Bush regeneration undertaken on 2.76ha across the six priority sites with 1150 trees planted at Kilgin Road. 	1	<ul style="list-style-type: none"> Weed control and habitat regeneration undertaken on High Conservation Value roadside vegetation. Improved protection of threatened species and endangered ecological communities on roadsides. Maintenance of safer road corridors Protect and enhance key koala habitat along Kilgin Road.
<p>GIS project</p> <ul style="list-style-type: none"> Georeferencing of all Council-sponsored biodiversity improvement projects on public and private lands. Review of past and current Vegetation Management Plans to determine habitat loss and gain for priority species (Koala). 	1	<ul style="list-style-type: none"> Spatial data analysed and used to identify and prioritise opportunities for biodiversity projects. Refined understanding of Koala Habitat status in the LGA.
<p>Landcare partnership and support to groups</p> <ul style="list-style-type: none"> Major ongoing partnership with Richmond Landcare supporting the delivery of the Urban Landcare Program. Annual grants paid out to urban Landcare groups as per Urban Landcare Program. Annual grants paid to 8 local Landcare groups working on Council land in the urban area, including Wilsons River Landcare Inc, Browns Creek Catchment Landcare, Clunes Landcare, Friends of Wilsons Nature Reserve Landcare, Goonellabah Tucki Creek Landcare Inc, Martin Drive/Upper Monaltrie Creek Landcare, South Lismore Duckpond Landcare Inc, Tunttable Creek Landcare Inc. Non-financial support provided to a further 3 groups including Banyam Baigham Landcare, Bush Fruits LGBTIQ+ Landcare and Lismore Lake Inc Landcare. Landcare groups worked across >10 public land sites, restoring >20ha of native vegetation, planting >14,000 native plants and volunteering >6000 hours. A very large proportion of these outputs were contributed by Goonellabah Tucki Landcare Group Inc. Additional one-off funding was provided to 7 groups for post-flood site maintenance works in the urban riparian sites, more than doubling the annual investment. 	2 and 3	<ul style="list-style-type: none"> Enhanced capacity of community groups working on biodiversity outcomes. Improved biodiversity and ecological function in key urban reserves.

Strategy Area/Project	No. (SRV area)	Outcome
<p>Biodiversity events and workshops</p> <ul style="list-style-type: none"> Lismore City Council hosted an Open Properties Field Day program. Approx 30 participants attended 3 local properties where landholders opened their properties for small group 'walk & talk' tours, guided by bush regenerators. Lismore City Council provided a point of contact and participation at the <i>Banyula farm Farming for Climate Resilience & Productivity field day</i>. The event attracted close to 400 guests and involved multiple NRM partnerships. Lismore City Council supported delivery of <i>LANDCARE4Lifestylers</i> event. The Boatharbour Landcare event attracted over 100 guests to participate in walk and talks tours and hear from expert speakers. Lismore City Council sponsored local residents participation in the <i>Aussie Backyard Bird Count</i> citizen science project. Staff presented at the <i>Pearces Ck Hall Talks</i> series, delivering biodiversity and habitat knowledge to 80 people. <i>Big Scrub Day 2022</i> staff presented information stall and general engagement to approx 1500 people. <i>Dairy Industry field day</i> presentation on riparian restoration, collaboration and funding information to 40 dairy industry landholders. 2 schools-based planting events delivered as part of <i>Wilson's River Schools Education and Restoration</i> project (with WRL and ENVITE) 600 trees planted. Environmental display and messaging delivered at the 2022 <i>Lismore Show</i>. Sponsored and co-facilitated <i>Science in the Pub</i> event hosting Ornithologist Tim Low. Record attendance 300 people. 	2	<ul style="list-style-type: none"> Strengthened connections between community and environment, and enhanced capacity in the community to support biodiversity outcomes. Built neighbourhood connections, inspire participants, increase awareness/skills of bush regen and empowered the hosting landholders. Strengthened industry connections, promoted RLI Initiative, educated guests on biodiversity issues and ideas. Promoted citizen science initiatives, gained further knowledge into species movement across the LGA, educating the public on species movements. Delivered science education in an informal setting. Primary School engagement with bush restoration, water quality and catchment education. Ecological messaging and engagement with Rural Industry landholders.
<p>Coastal Management Program (CMP)</p> <ul style="list-style-type: none"> Council contributed to the completion of the stage 1 (Scoping study) of the Richmond River Estuary Coastal Management Program, and endorsed the pursuit of Stage 2 - Detailed studies of vulnerabilities and opportunities. 	2	<p>The CMP scoping study, a joint project led by Rous County Council.</p>
<p>Individual landholder projects under the Rural Landholder Initiative</p> <ul style="list-style-type: none"> 1 Expressions of Interest process delivered to rural landholders to undertake approx 25 new on ground projects. 50 active projects within the RLI program managed. Bush regeneration undertaken on 43.62ha of native vegetation (incl 24.3 ha of Koala habitat), with 9950 trees planted (incl 2340 Koala trees) 7.16 ha of area revegetated with native vegetation (i.e., tree planting) 4.2 km of fencing installed/maintained for habitat protection. 4.4 km of riparian area restored and 3.46km excluded from stock. 	3	<ul style="list-style-type: none"> Strengthened relationships between LCC and rural landholders. Enhanced capacity of rural landholders to maintain and improve the biodiversity values of Lismore's rural lands. Enhanced landscape connectivity and habitat values on privately-owned rural land.
<p>Three Rural Industry partnership projects under the Rural Landholder Initiative:</p> <ul style="list-style-type: none"> Working collaboratively with key stakeholders in regenerative and cooperative land management; landscape rehydration and nature-based solutions to flood mitigation to develop catchment-scale project proposals and grant applications. Partnerships strengthened with Grazing Industry through delivery of nature-based solutions projects and training. Onground events continued to be hindered by site access (wet). Sponsorship of the Regenerative Agriculture Alliance's Farmer Mentoring Program. 	3	<ul style="list-style-type: none"> Strengthened relationships between LCC and rural industries. Enhanced capacity of rural industries to maintain and improve the biodiversity values of Lismore's rural lands.
<p>Bush regeneration in urban reserves</p> <ul style="list-style-type: none"> Council's SRV-fund contributed to bush regeneration in urban reserves, with works ongoing on >20 sites totalling 50+ ha of urban bushland under active restoration. 	4	<ul style="list-style-type: none"> Enhanced landscape connectivity and habitat values. Improved protection of threatened species on Council-managed land.

Strategy Area/Project	No. (SRV area)	Outcome
<p>Bush regeneration in high-value riparian vegetation</p> <ul style="list-style-type: none"> Bush Regeneration in riparian sites completed for 22-23 FY, including additional flood recovery effort and planting of 2500 trees, 830 lomandra and 8.53ha assisted natural regeneration at 8 sites (Pritchard Park 16400m2, Twin Bridges 2400 m2, Ballina St bridge 5600 m2, Riverview Park 10,200 m2, Gasworks Creek 7700 m2, Albert Park 25,000 m2, Albert Park- South 14000 m2, Brunswick St Depot 0.4Ha). Works completed in alignment with Wilsons River Riparian Vegetation Management Plan. 	4	<ul style="list-style-type: none"> Improved riparian function and ecosystem services for aquatic environments including water quality. Flood impact amelioration including pollution management and vegetation restoration.
<p>Feel Blue Touch Green program</p> <ul style="list-style-type: none"> Hosted a 'coming to our senses' mindfulness in a nature walk at the Big Scrub Event (October), with 20 participants. Engaged with Bodhi Tree Monastery's Venerable Pannyavaro and Psychologist John Barter. 2 well-being days at Bodhi Tree Forest Monastery and Retreat Centre. 10 participants planted around 500 rainforest and riparian trees and were provided guidance on mindfulness in nature. 	4	<ul style="list-style-type: none"> Strengthened connections between community and environment. Fostered a sense of community and environmental healing post-flood and offered a opportunity to reconnect with the environment. Supporting mental health and well-being as well as biodiversity.
<p>Koala Habitat Restoration</p> <ul style="list-style-type: none"> Council committed support to the Friends of Koala/Monaltrie Landcare Environmental Trust Project as a partnership project with industry. Supported presentation to internal staff managing koala habitat at Blakebrook Quarry. 2 koala habitat projects were funded under the RLI (Round 9 Yr 1, Round 8 Yr 2). 	5	<ul style="list-style-type: none"> Improved quantity and quality of koala habitat in the floodplains landscape. RLI outcome- Improvement of koala habitat on private lands through assisted regeneration, revegetation and fencing in key priority areas.
<p>Koala population and density survey</p> <ul style="list-style-type: none"> Planning for KPoM Area Monitoring Survey (Spring 2024) 	5	<ul style="list-style-type: none"> Improved understanding of the presence and density of koalas in this area at the time of the survey.
<p>Contributions to collaborative research into distribution pathways and strategies for koala conservation</p> <ul style="list-style-type: none"> Work with partner agencies through formal committee arrangement for the development of a Regional Koala Strategy. 	5	<ul style="list-style-type: none"> Decision-making and resource allocation for habitat restoration based on high quality information.

Special Rate Variation Expenditure (Security)

Councils must report on special rate variation expenditure (granted under s508) in accordance with conditions of any instruments of approval made by the Minister. For the Security SRV, Council is required to report in its annual report:

- the program of expenditure that was actually funded by the Special Variation;
- any significant differences between the Proposed Program and the program of expenditure that was actually funded by the Special Variation and the reasons for those differences; and
- the outcomes achieved as a result of the Special Variation.

Total Income Received (\$):		\$167,200		
Details (Expenditure as funded by SRV)	Budget (\$)*	Actual (\$)	Diff (\$)	Reason for \$ Difference
Beat Patrol – CBD Security	\$65,000	\$64,376	\$624	
CBD CCTV Maintenance	\$58,000	\$31,526	\$26,474	Delays in reinstatement of CCTV equipment therefore less maintenance expenditure
CBD CCTV Monitoring	\$30,000	\$10,133	\$19,867	Following flood CCTV was non-operational for a period. Therefore, no monitoring activities were occurring.
Late Nigher Bus Service	\$14,200	\$14,200	\$0	
Totals	\$167,200	\$120,235	\$46,965	

Strategy Area/Project	Outcome
A1 Our community is safe, happy and healthy	Implemented and managed CitySafe Program in the Lismore CBD including the provision and maintenance of Lismore and Nimbin CCTV cameras, representation on the CitySafe Committee, Lismore Late Nighter bus service

Stormwater Management Services

In accordance with Local Government Regulation 2021 cl217(1)(e), an annual report must include a statement detailing the stormwater management services provided by the council during the year.

Council collected \$388,107 in levies in 2022/23, of which \$198,400 was spent on the USMP asset network, and the remainder kept in reserves. The SMS charge was spent on inspections, maintenance, and operational costs. No capital funding was committed due to the current USMP Review. All projects scheduled for the 2022/23 Implementation Plan will be scheduled for works following the review set for completion in October/November 2023..

Swimming Pool Inspections

In accordance with Swimming Pools Act 1992 s22F(2) and Regulation 2018 cl23, an annual report must include information in relation to swimming pool inspections carried out in accordance with the Act and Regulation.

Details	#
Number of inspections of tourist and visitor accommodation	18
Number of inspections of premises with more than two dwellings	3
Number of inspections that resulted in issuance of a certificate of compliance	0
Number of inspections that resulted in issuance of a certificate of non-compliance	0

Voluntary Planning Agreements

Environmental Planning and Assessment Act 1979 No 203, Division 7.1(2)(7.5)(5) (formerly s93G)

A planning authority that has entered into one or more planning agreements must, while any such planning agreements remain in force, include in its annual report particulars of compliance with and the effect of the planning agreements during the year to which the report relates.

There have been no VMP agreements for the reporting period.

Works on Private Land

In accordance with Local Government Regulation 2021 cl217(1)(a4), an annual report must include details or a summary of resolutions made during that year under Local Government Act s67 concerning work carried out on private land and details or a summary of such work if the cost of the work has been fully or partly subsidised by the council, together with a statement of the total amount by which the council has subsidised any such work during that year

Council has not performed any works on private property for the reporting period.



For more information phone
Lismore City Council

6625 0500